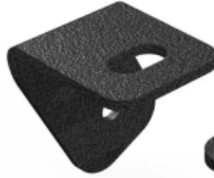




## 2022+ Ford Maverick A-Pillar/Ditch Light Brackets

CONTENTS		TOOLS
QTY	DESCRIPTION	10mm socket or wrench
2	Light Bracket (One Left & One Right)	Plastic clip removal/pry tool
2	Lock Washer	Painter's tape
2	PPF Film Strip	

PASSENGER SIDE BRACKET



DRIVER SIDE BRACKET



LOCK WASHERS



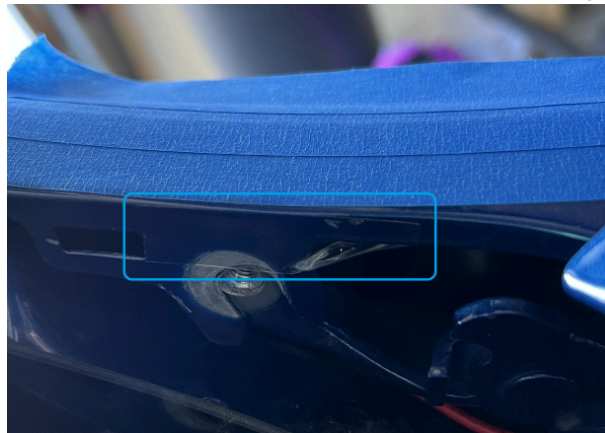
PPF FILM

### Installation Instructions

Starting on the driver's side, remove the trim piece as identified below. Using a plastic trim removal tool, you can gently pry the rubber cowl trim away from the fender. With the trim out of the way, remove the bolt circled below using a 10mm wrench.



The next step is to install the paint protection film to the backside of the fender. Oversized pieces are provided in case you wish to cover a larger area than shown below. This is also a good time to place painter's tape across the top of the fender to prevent scratching.



Install the light bracket by reusing the original fender bolt. The included lock washer can be inserted in between the bracket and fender to help prevent rotation. These brackets are very low profile, thus workspace is tight. You can pre-install your lights onto the brackets if you find that easier.



Once the driver side bracket is mounted securely, you may repeat this process to install the passenger side bracket. The final step is to remove the painter's tape and reinstall the rubber cowl trim pieces.

**Optional:** you may notch or trim these trim pieces as shown below, this is not required.



Congratulations on adding ditch lights to your Maverick! 👍

**DISCLAIMER FOR JJC LLC PRODUCTS:** Buyer assumes all risk and liability whatsoever for the installation and use of JJC LLC products. JJC LLC assumes no liability for injury, loss, incidental or consequential damages incurred as a result of the use or installation of these products. Professional installation is recommended.