



# 12v Conversion Installation

Please Follow these Steps in the Pictures shown

## THINGS NOT INCLUDED THAT YOU WILL NEED TO PROCEED:

1. DREMEL TOOL (Suggested 4300 Series) Includes all Bits needed in this kit. (\$129 at Home Depot)
2. DREMEL 1/8" (3.2mm) Multi Purpose Cutting Bit (Dremel #561) and Sanding Disk (Picture on Page 2 and 3)
3. Razor Blade
4. Flush Cuts or Cutting Pliers
5. Flat Head Screwdriver
6. Hammer
7. RJ45 Crimp Tool
8. TIME and PATEINCES! Take your time! A mistake could lead to a damaged Dishy!

If you have any question, please contact us at

[STARMOUNTS@YAHOO.COM](mailto:STARMOUNTS@YAHOO.COM)

You can also Call or Text Brandon @ (760)402-5417

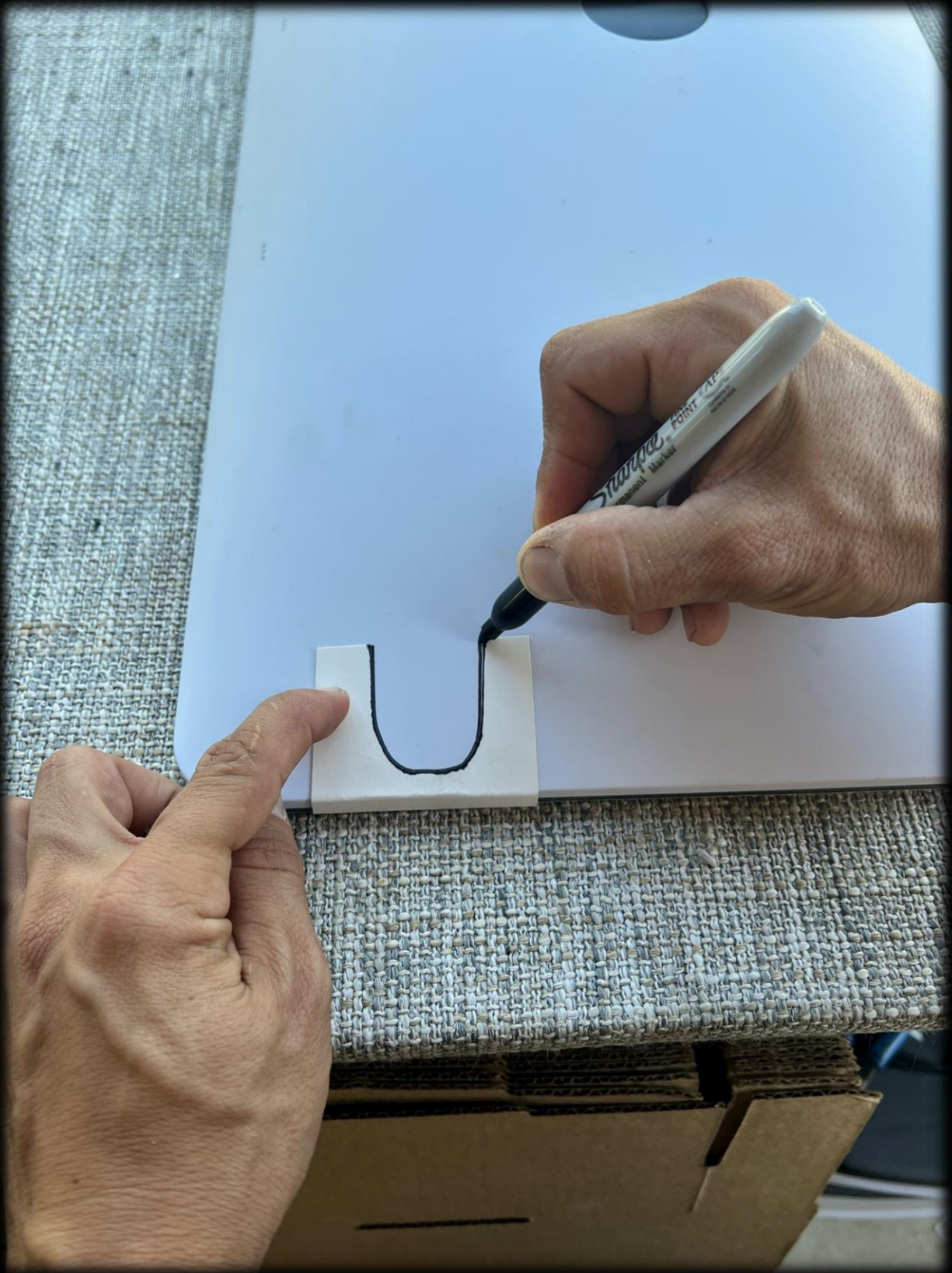
PAGE 1















Finish edges by hand. This does not need to be perfect

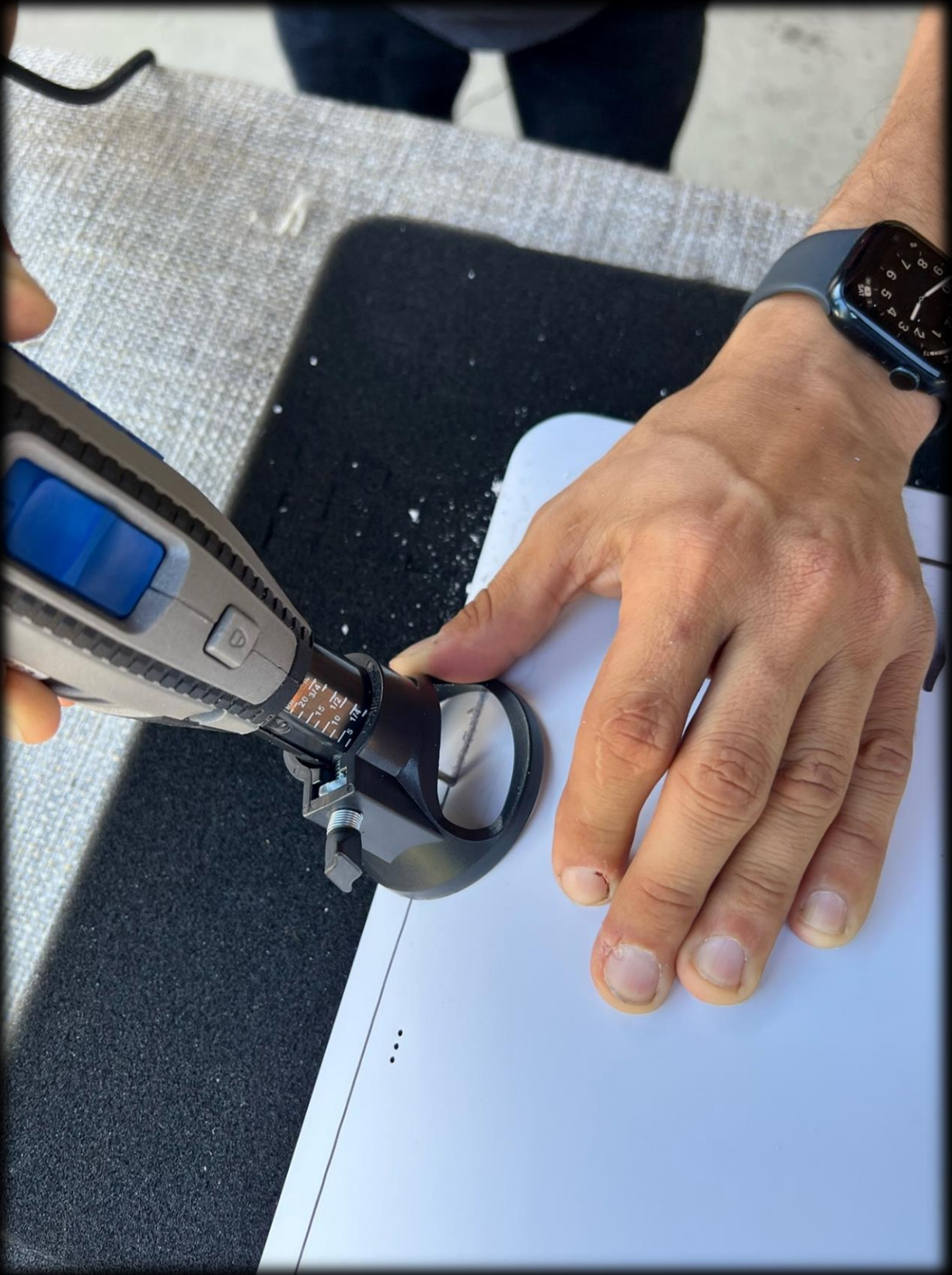


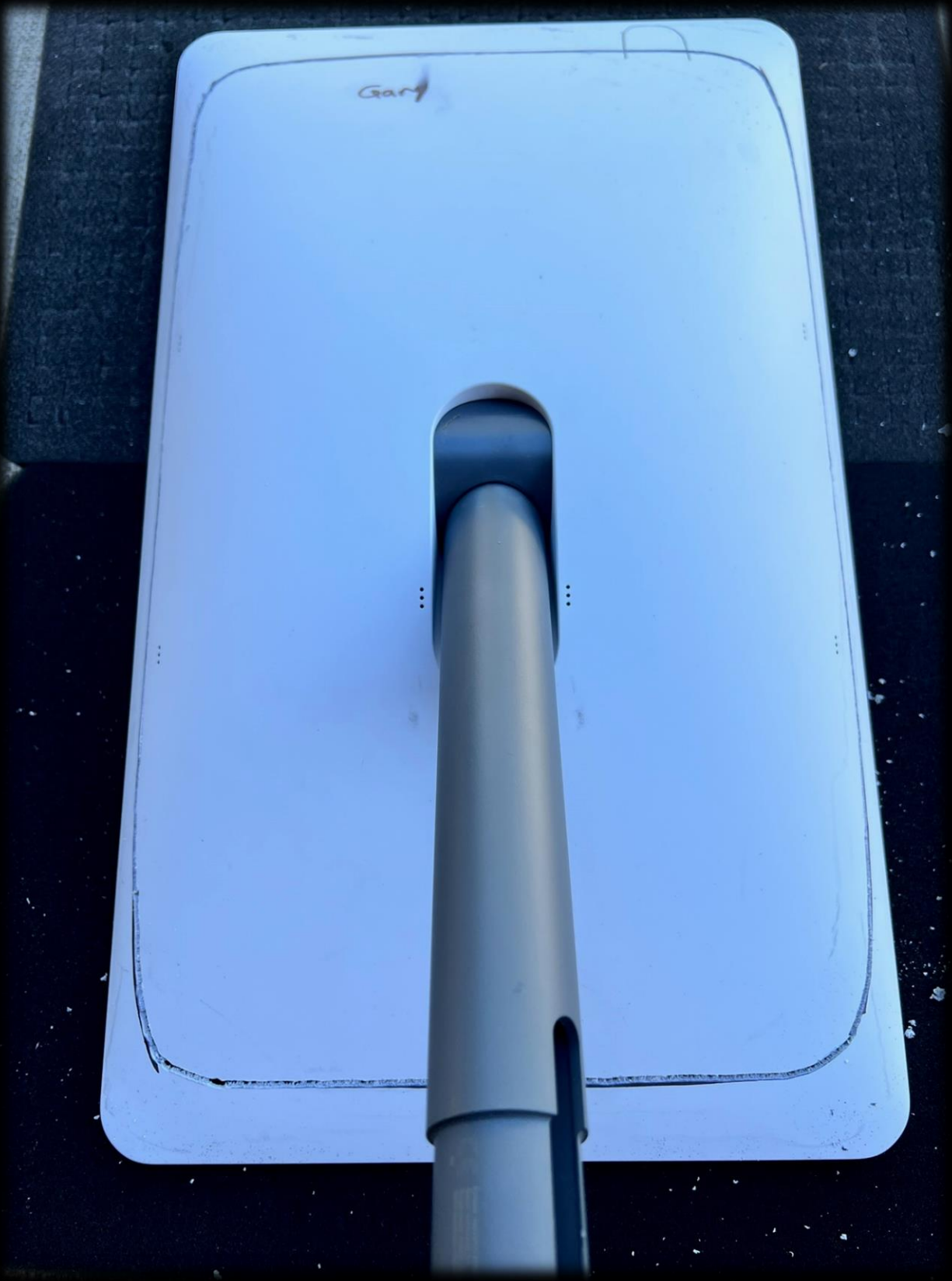


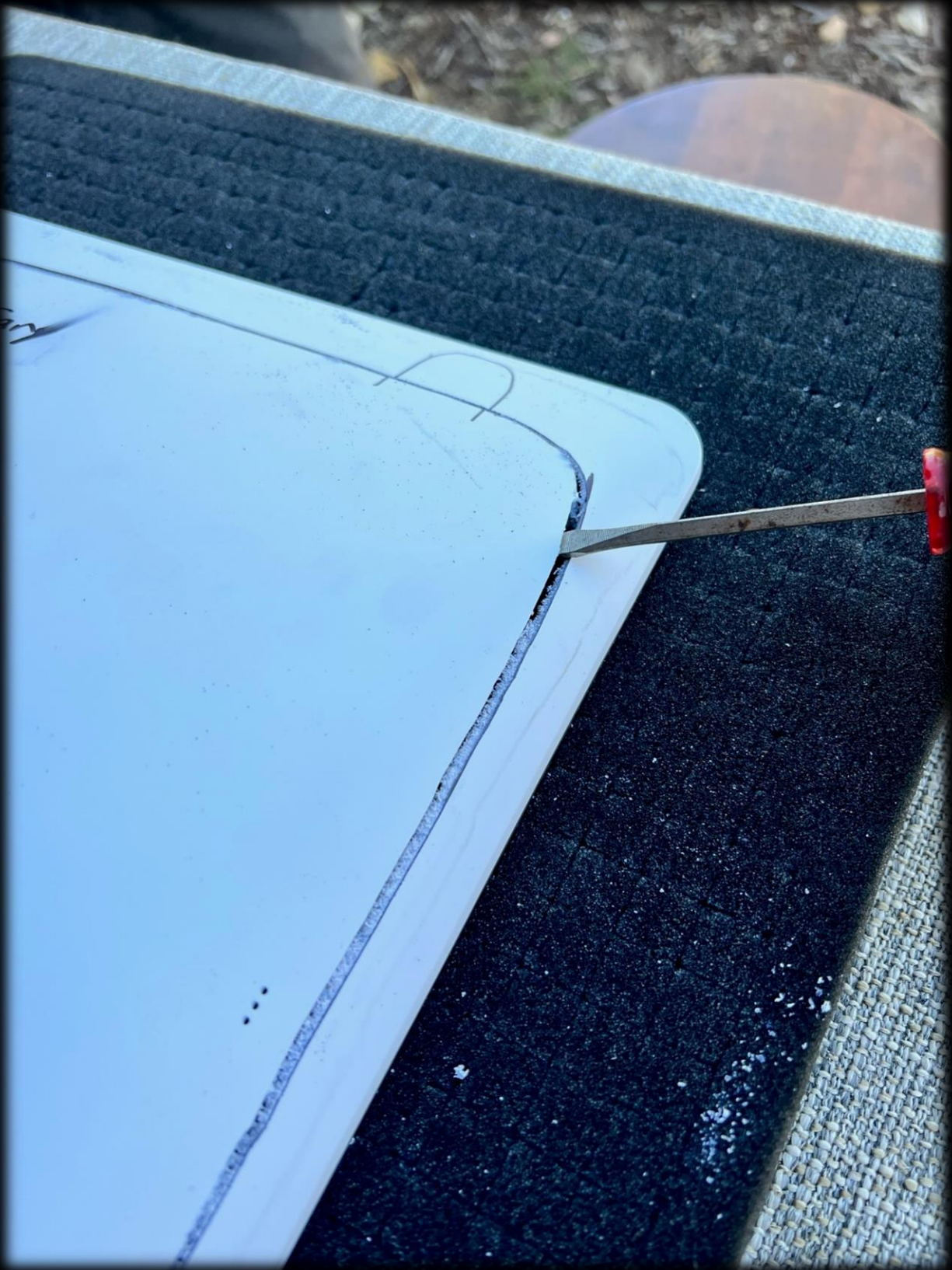


































Do Not Cut all the way through here. We will manually remove this piece by hand in the next step. This is to prevent possible damage to the board!









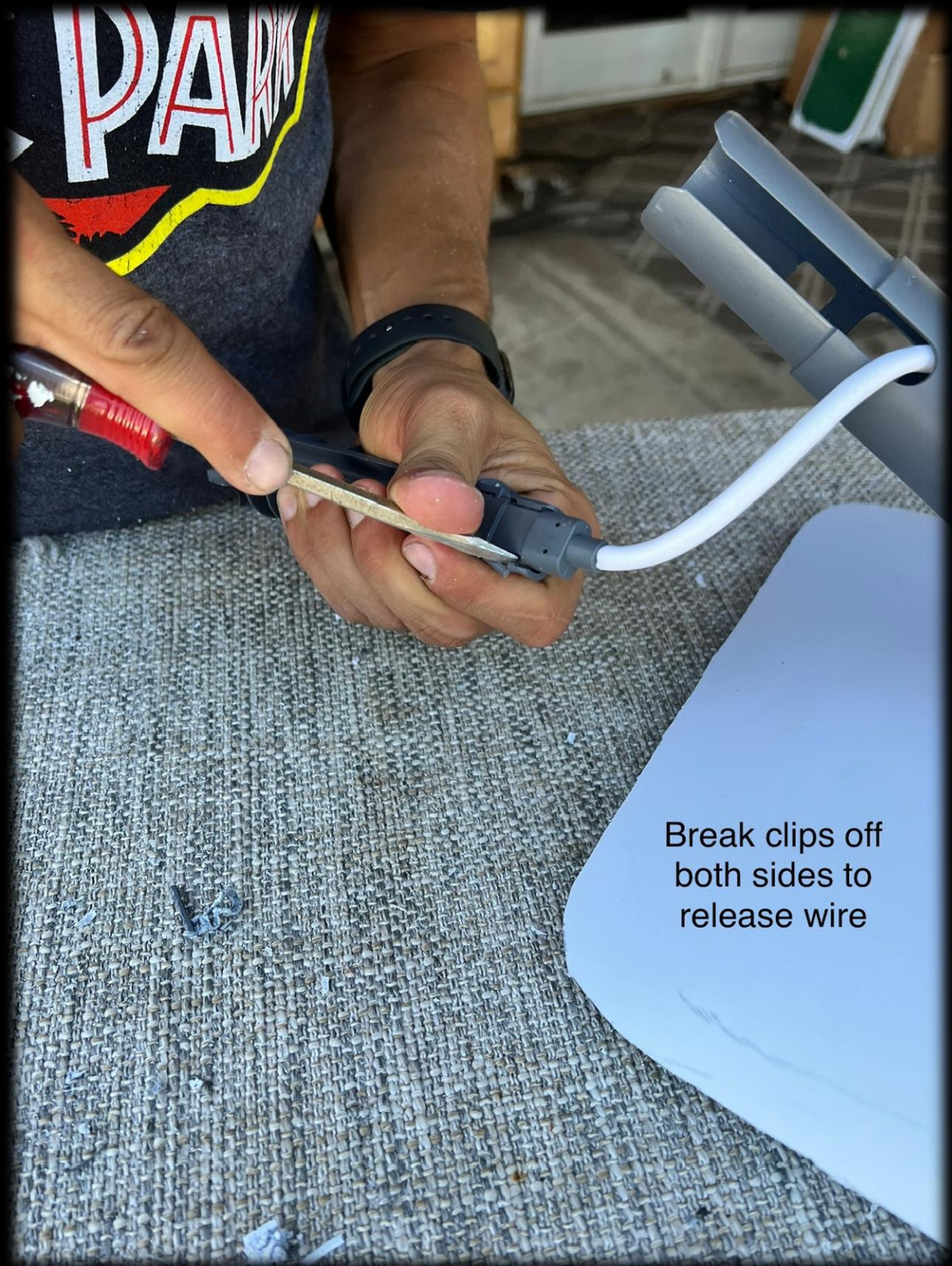






Push release button with your finger and pry the smaller square with a flathead screw driver. You will be removing this piece from the pole.





Break clips off  
both sides to  
release wire





Pull wire through  
the back housing

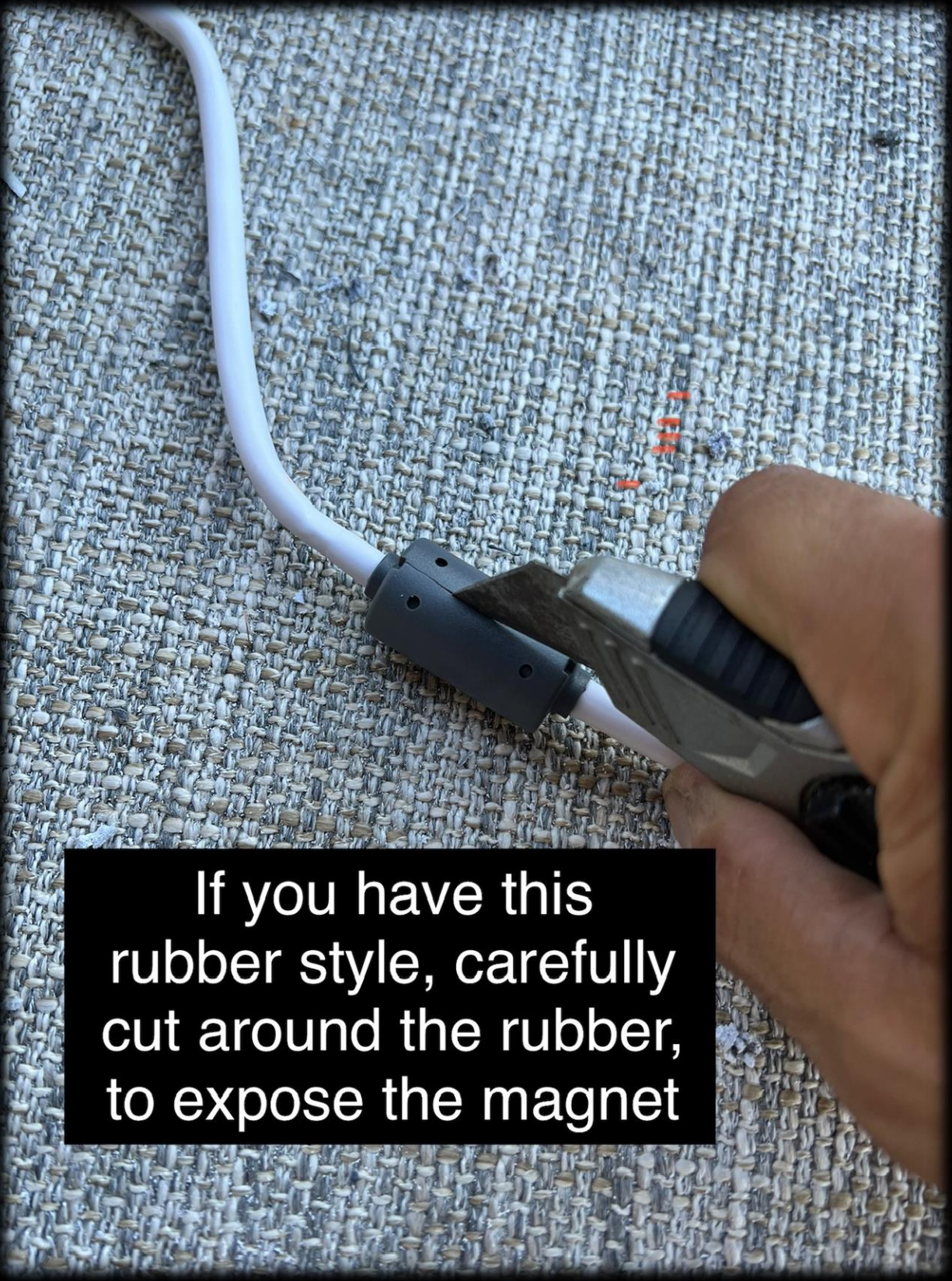




If your wire has this style on it, simply unclip it and ignore the next step. If your wire has the rubber style, follow the next step!

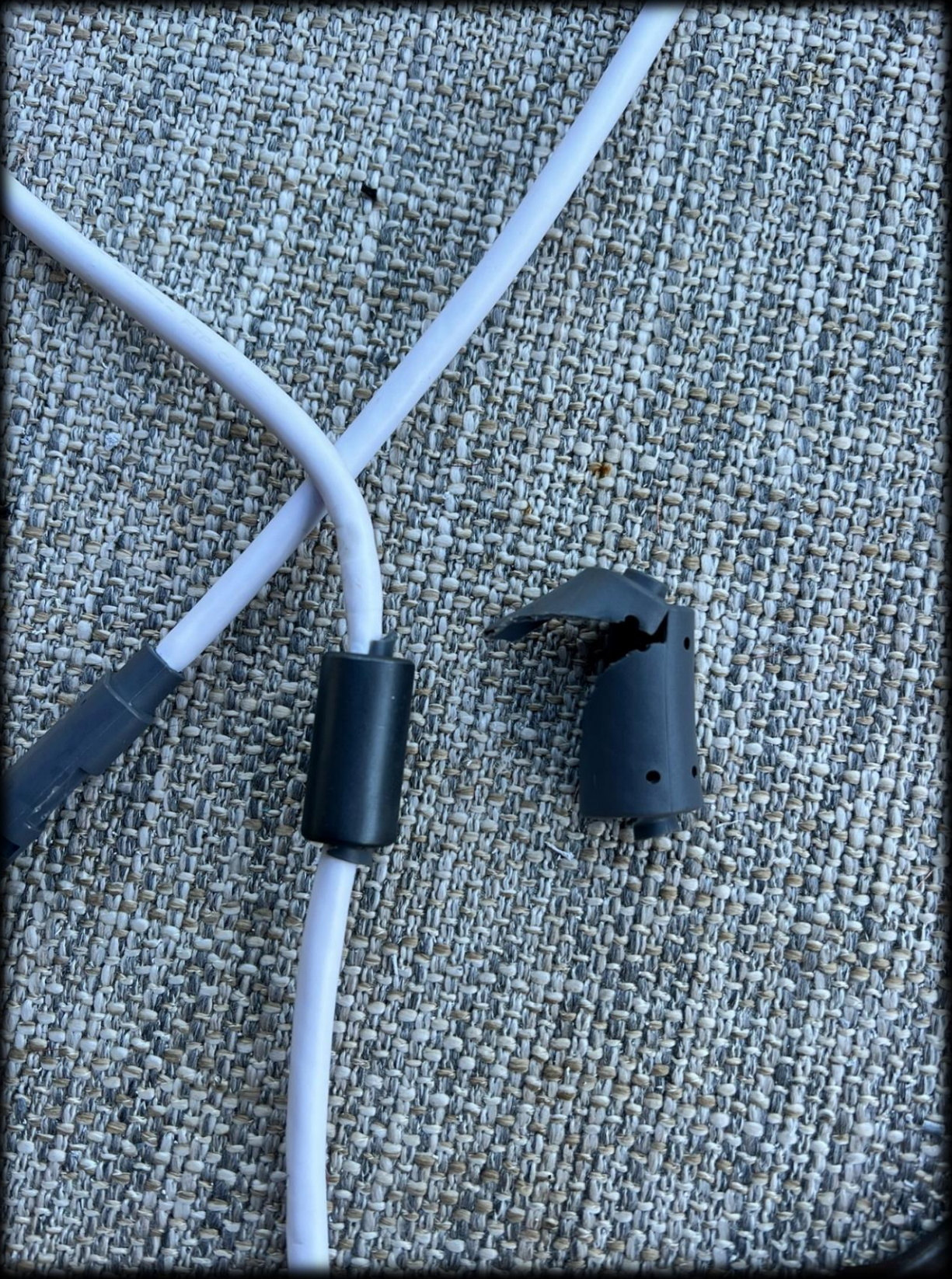






If you have this rubber style, carefully cut around the rubber, to expose the magnet











Only requires a gentle tap and the  
Magnet cylinder will fall apart





Mark your Starlink Cable 4" from the end of the gray end.

You will be cutting on this line during the next step!





Cut on your 4" marked line.



Make another mark on your Starlink Cable 2" from the end of the cut you just made.

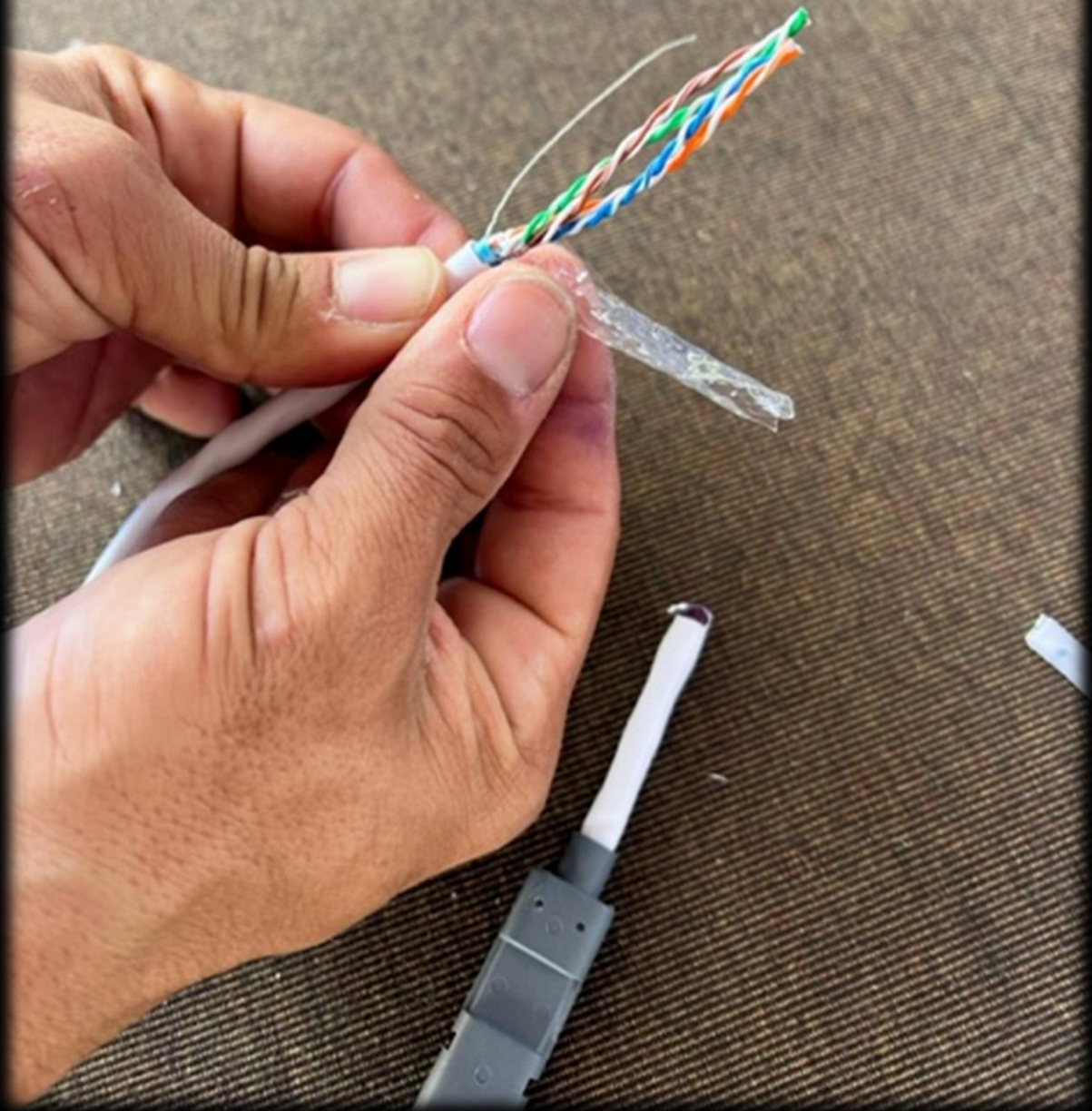




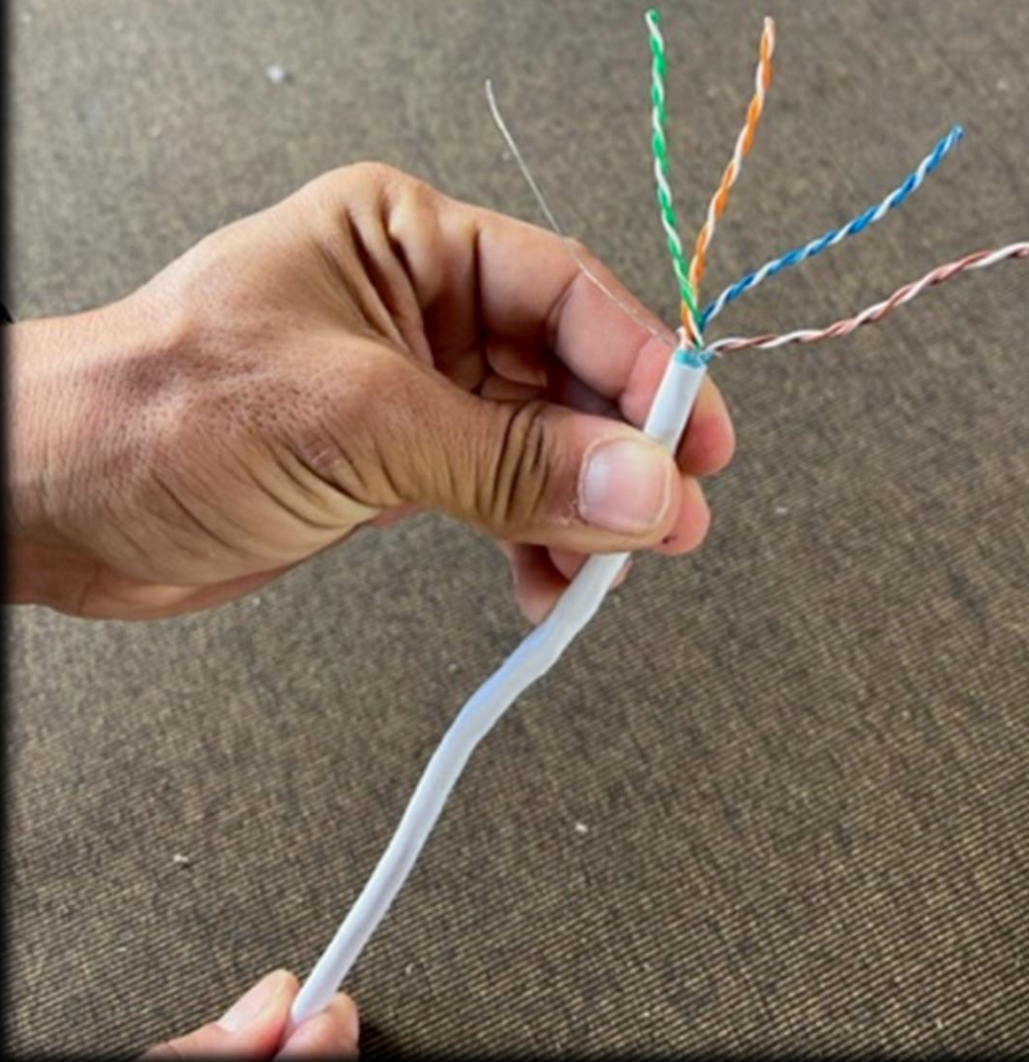
Using wire strippers, carefully strip off the outside wire protective sleeve.



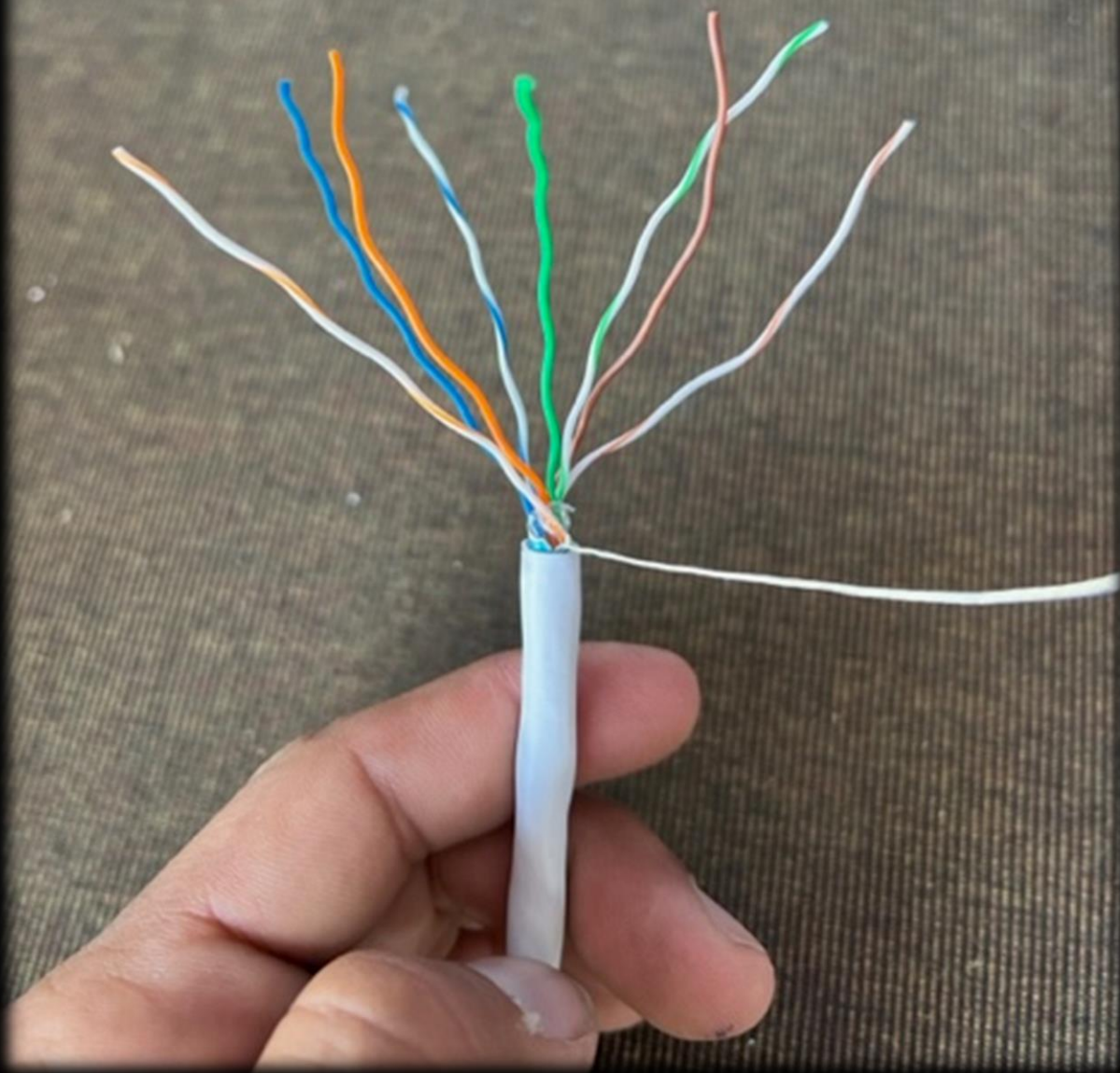
Remove/cut off the Plastic  
inside coating



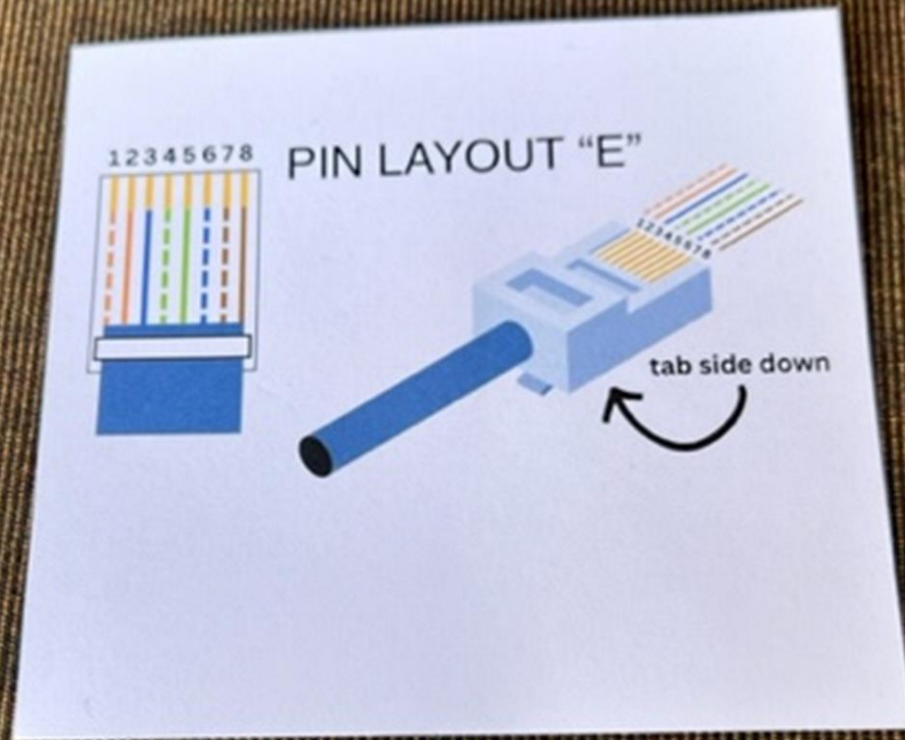
Separate the wire clusters  
and the metal ground wire



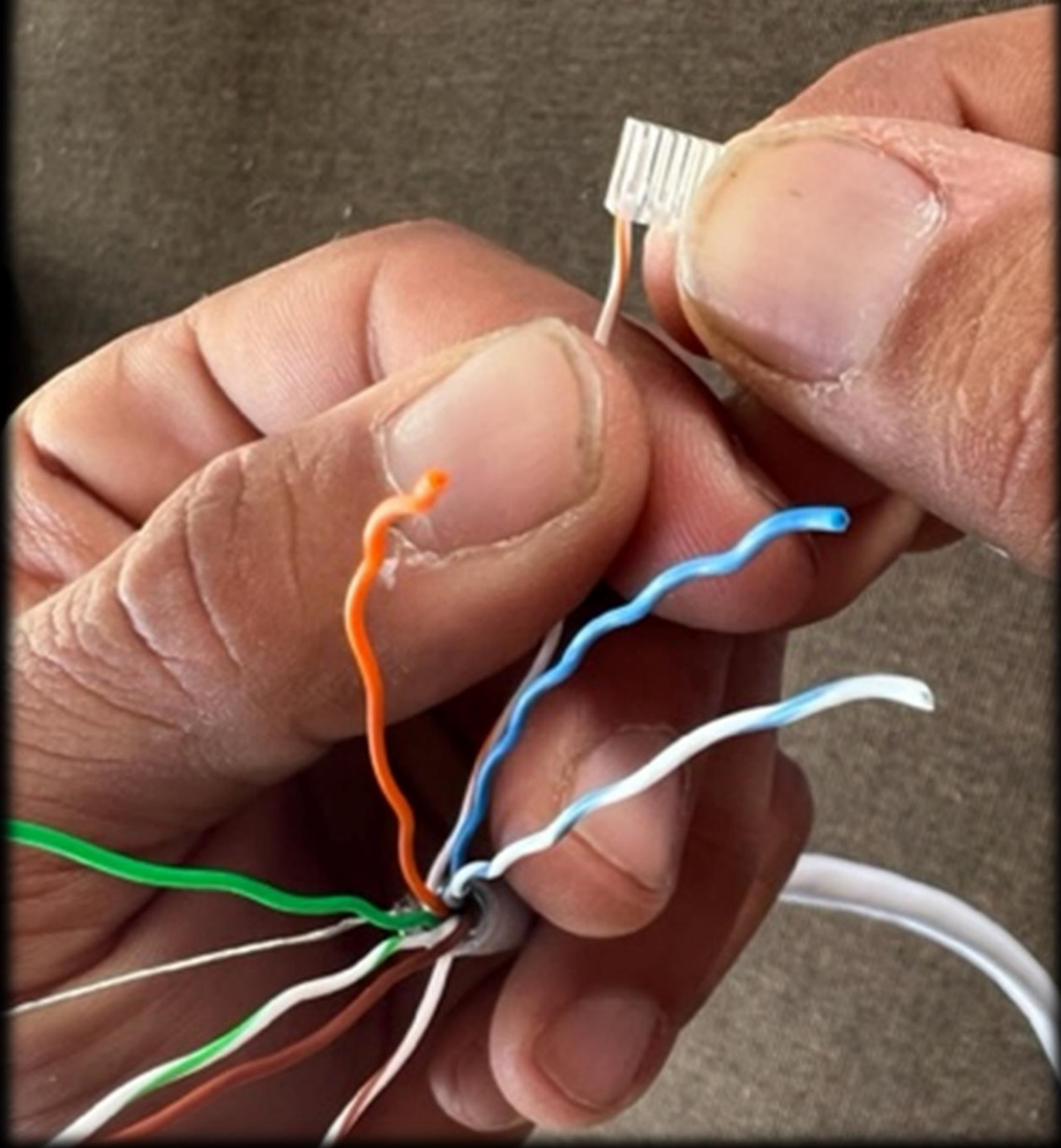
Now straighten all the wires separately like shown



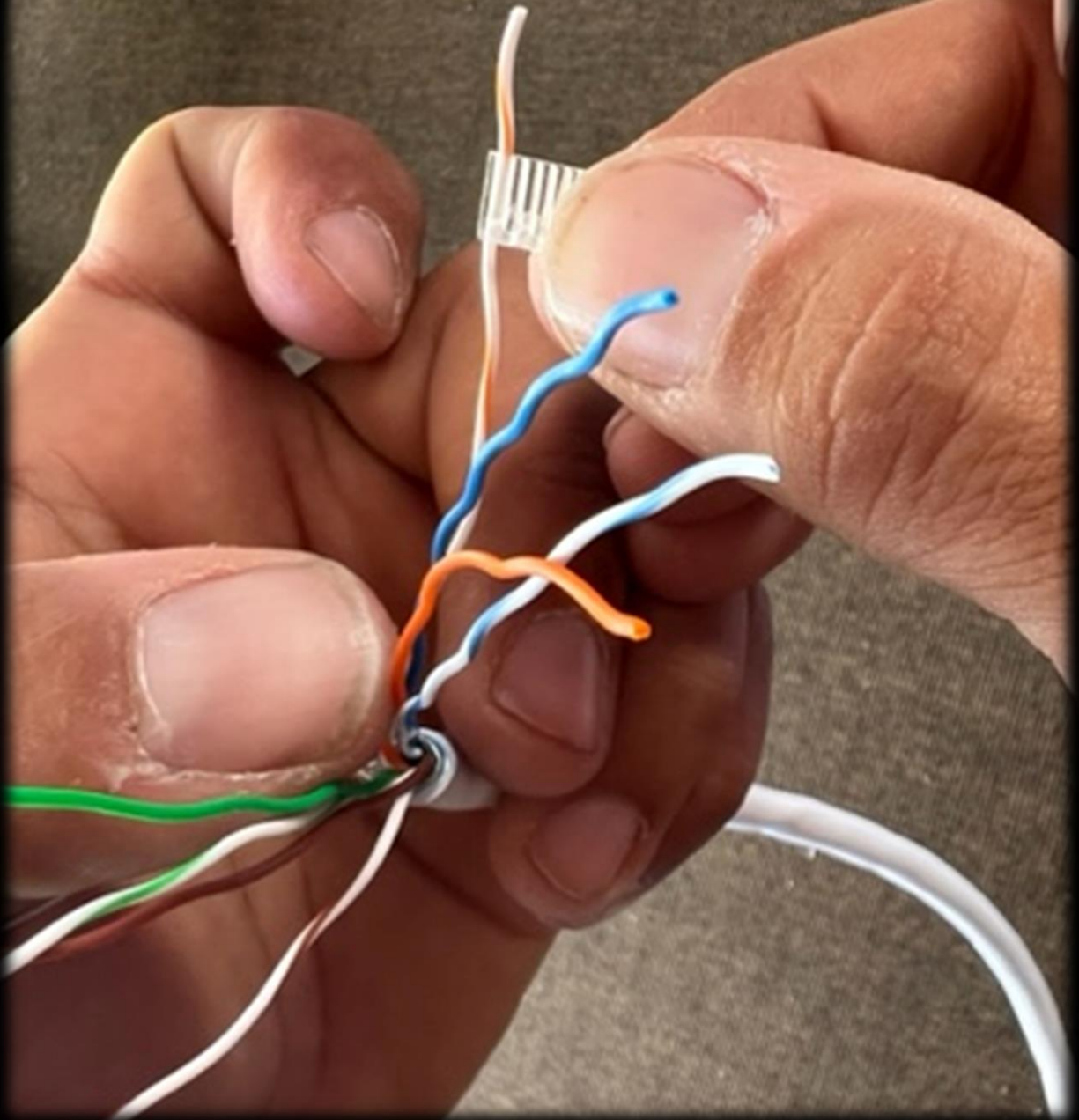
Pull out the Pin Layout Card  
and the Shielded RJ45 pieces  
supplied in your kit



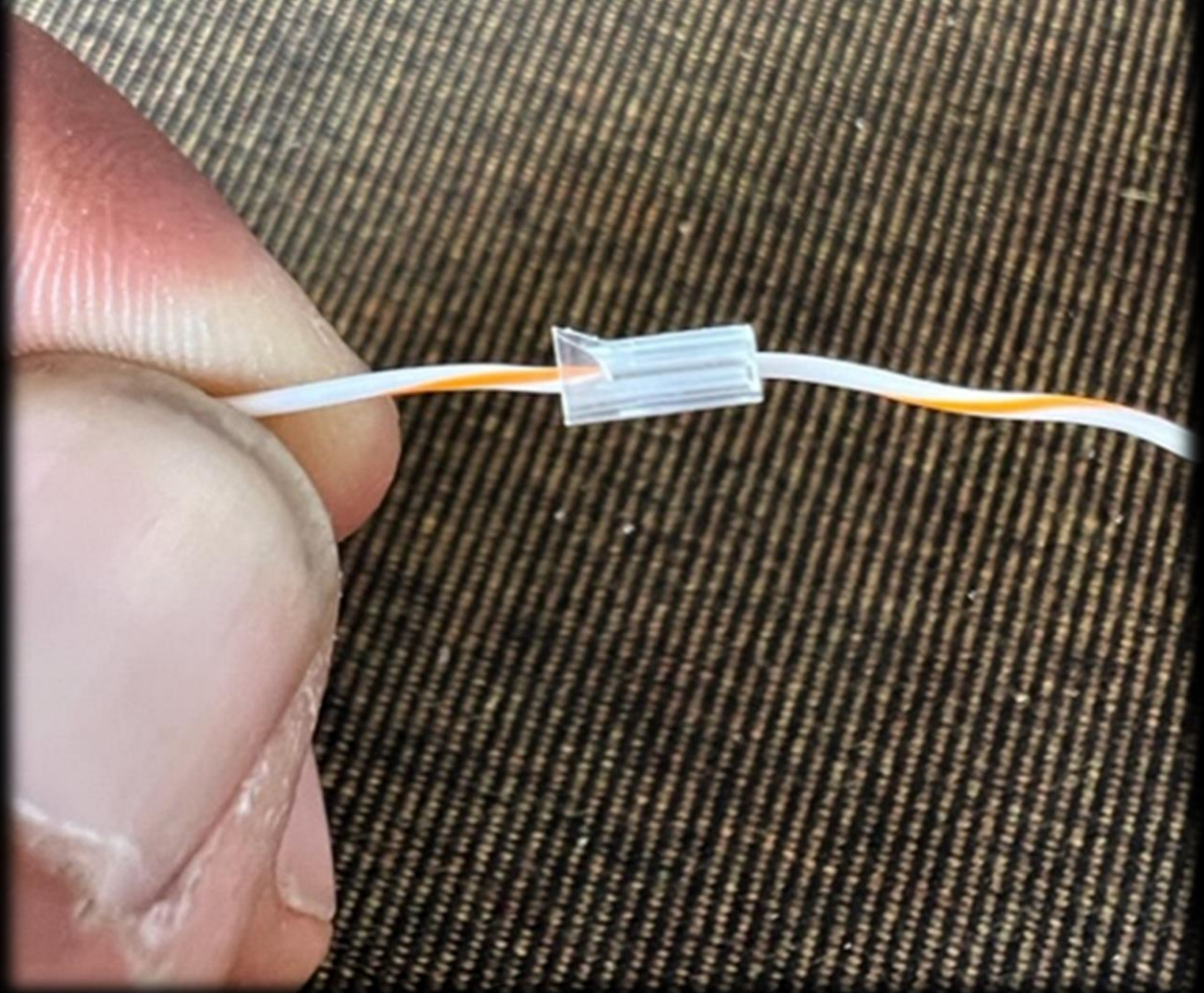
Start with the **White Orange**  
as shown on the Pin Layout  
Card as shown here



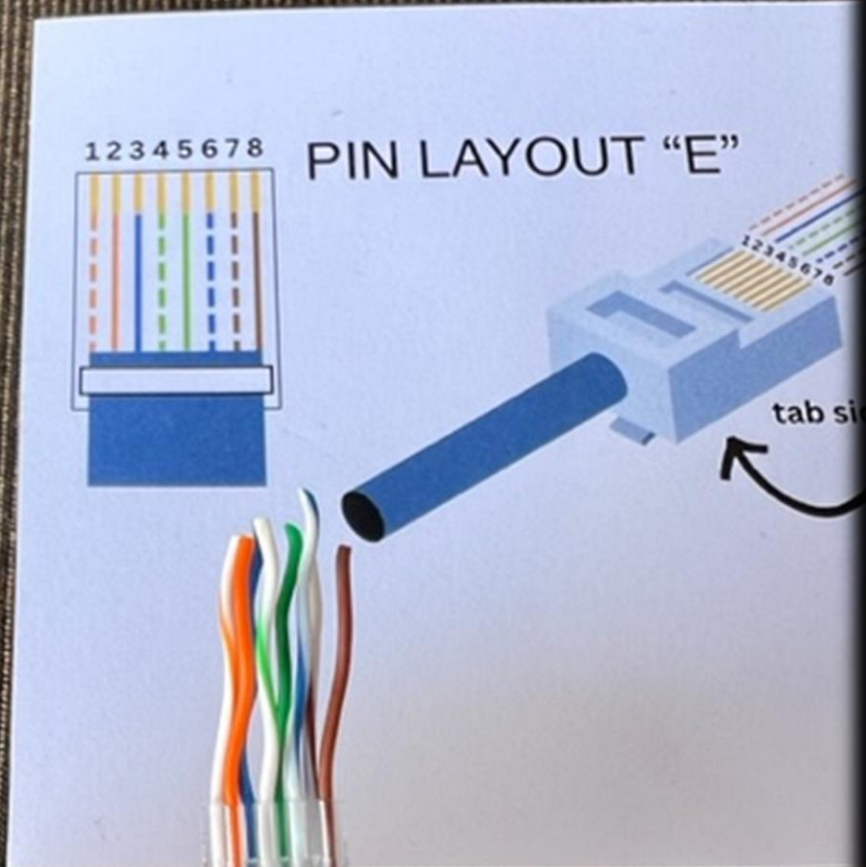
Start by pulling it about this far through the small plastic insert



Make sure you have the small lip faced up like this, and then continue to insert the wires in the order shown on the Pin Layout Card



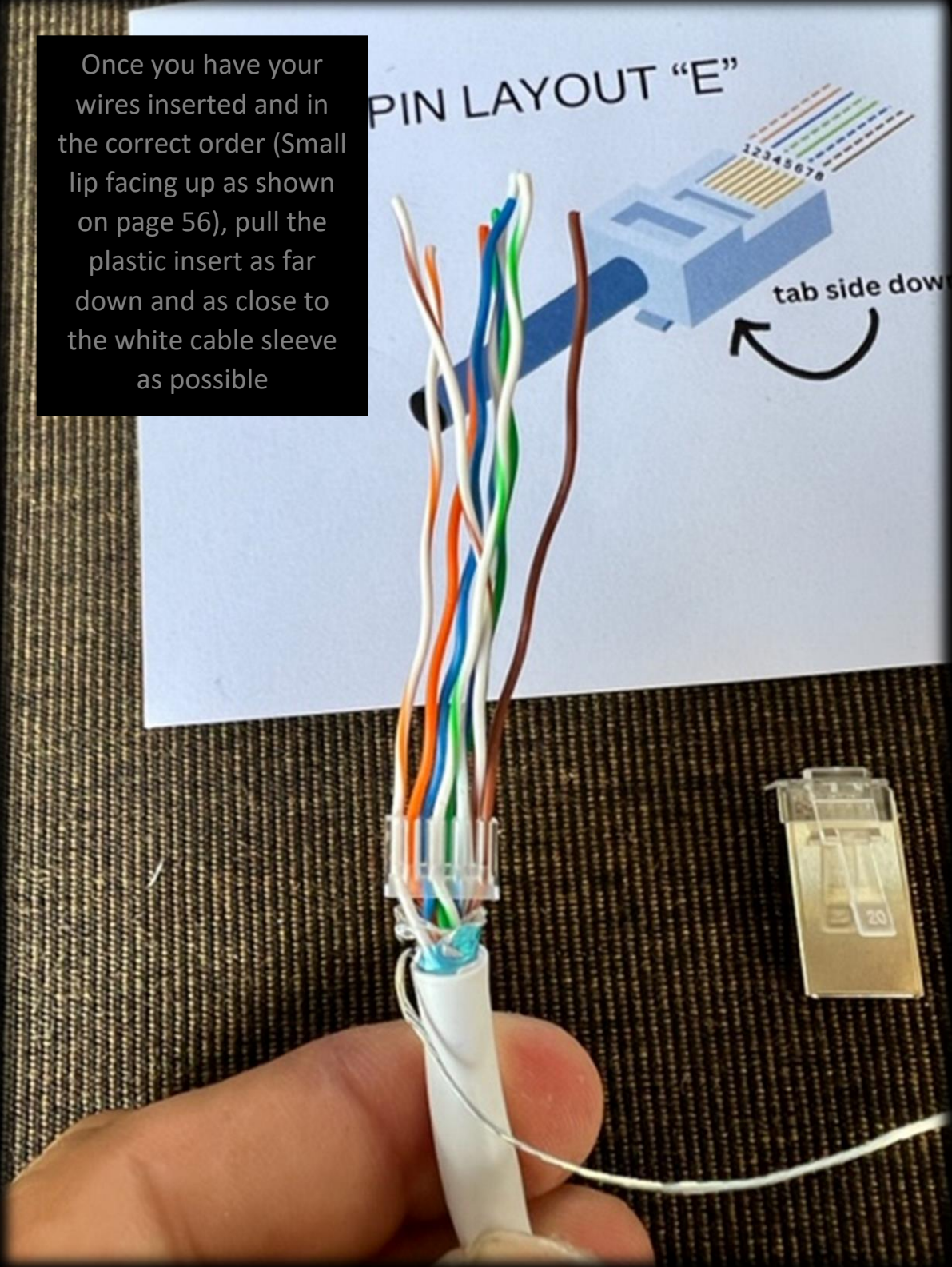
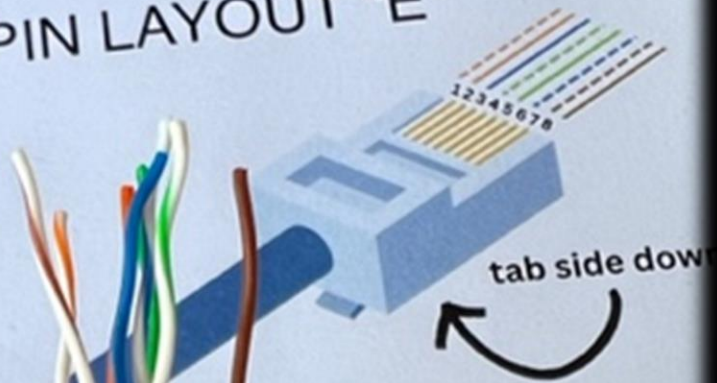




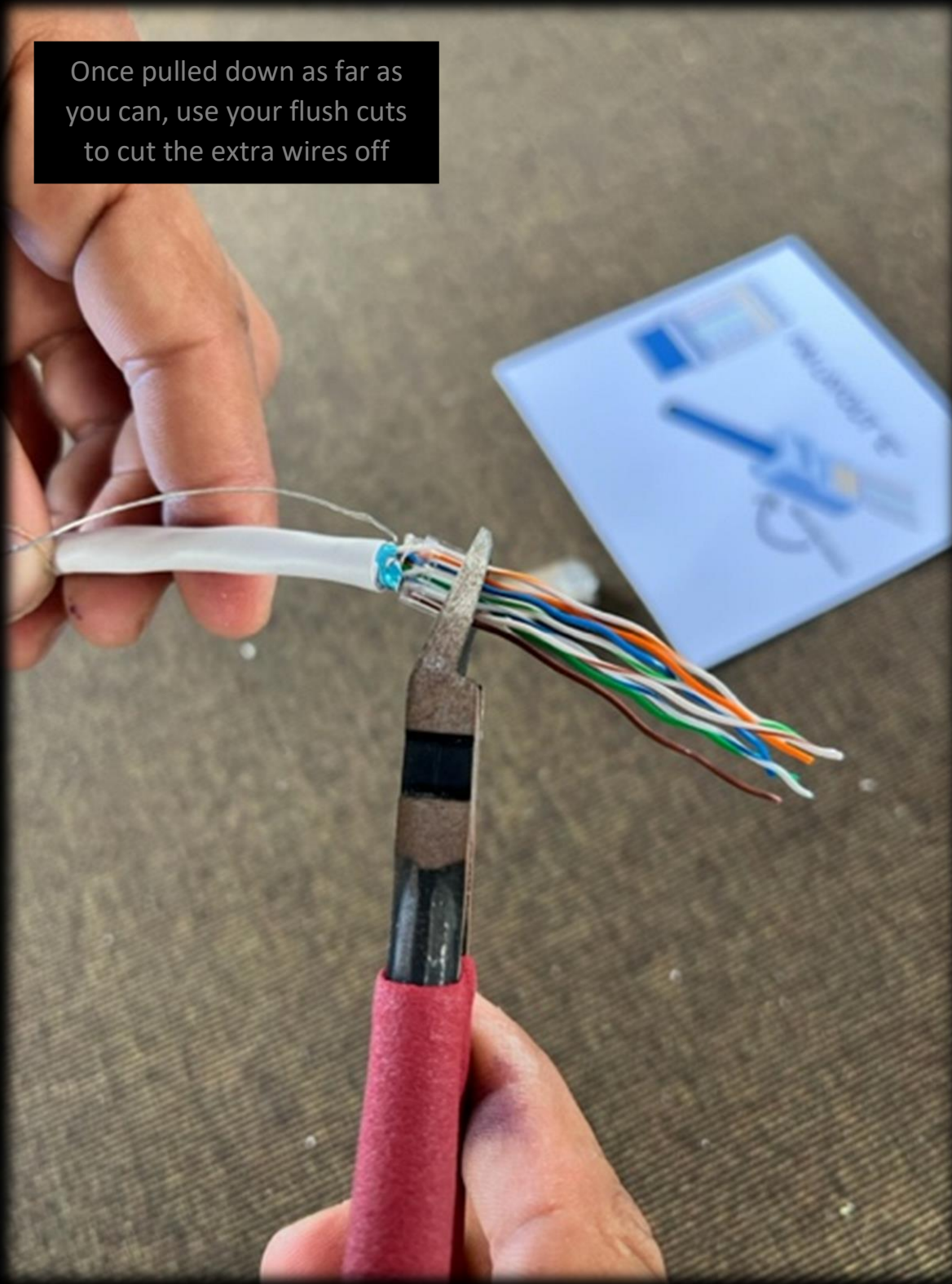
Get all the colored wires in order as shown on Pin Layout Card

Once you have your wires inserted and in the correct order (Small lip facing up as shown on page 56), pull the plastic insert as far down and as close to the white cable sleeve as possible

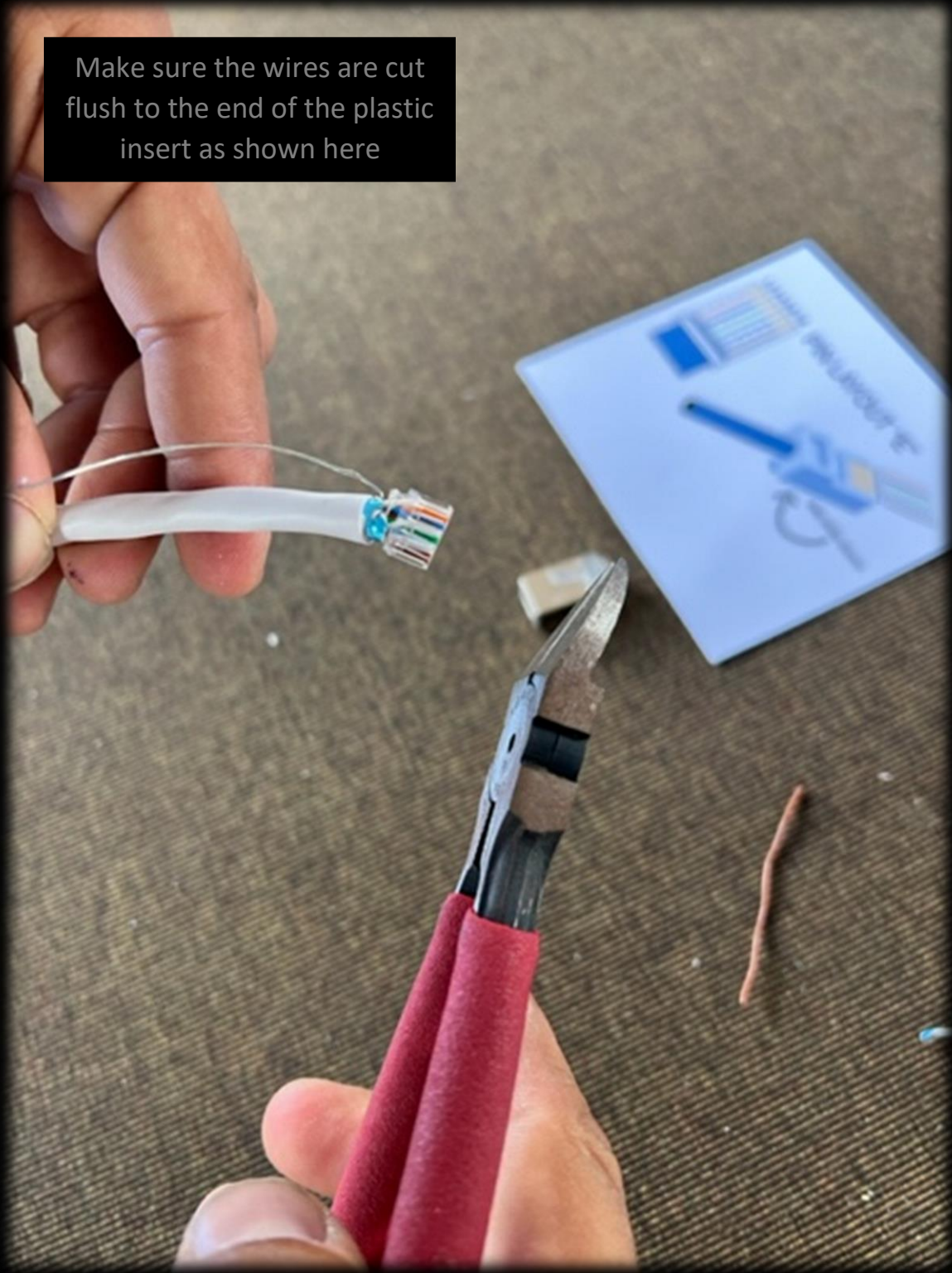
PIN LAYOUT "E"



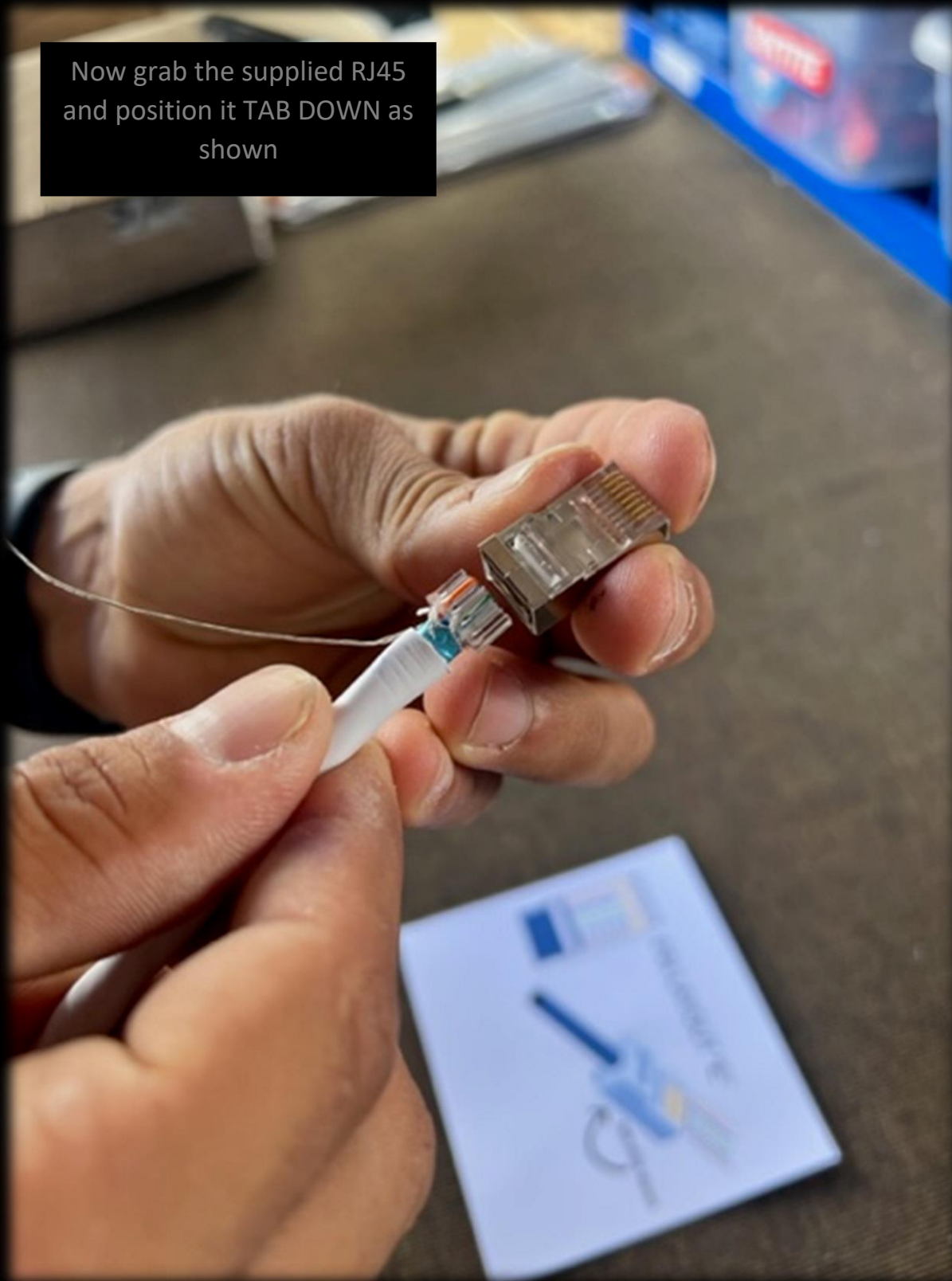
Once pulled down as far as you can, use your flush cuts to cut the extra wires off



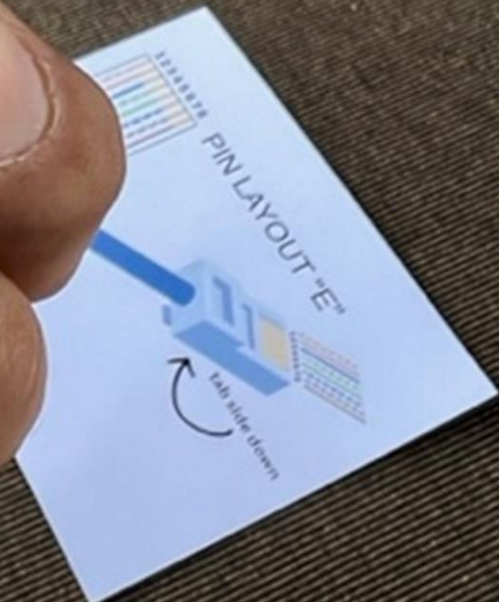
Make sure the wires are cut flush to the end of the plastic insert as shown here



Now grab the supplied RJ45 and position it TAB DOWN as shown



Insert your Plastic Insert with your wires LIP UP like when you were inserting the wires, into the RJ45 which needs to be positioned with its TAB DOWN



Push the Insert in until you hear a snap, or until you can see that it is all the way inserted. You can push some of the Ground/Drain Wire in to the side of the RJ45 before your crimp the wires down



You will need a RJ45 Crimp tool for this step.

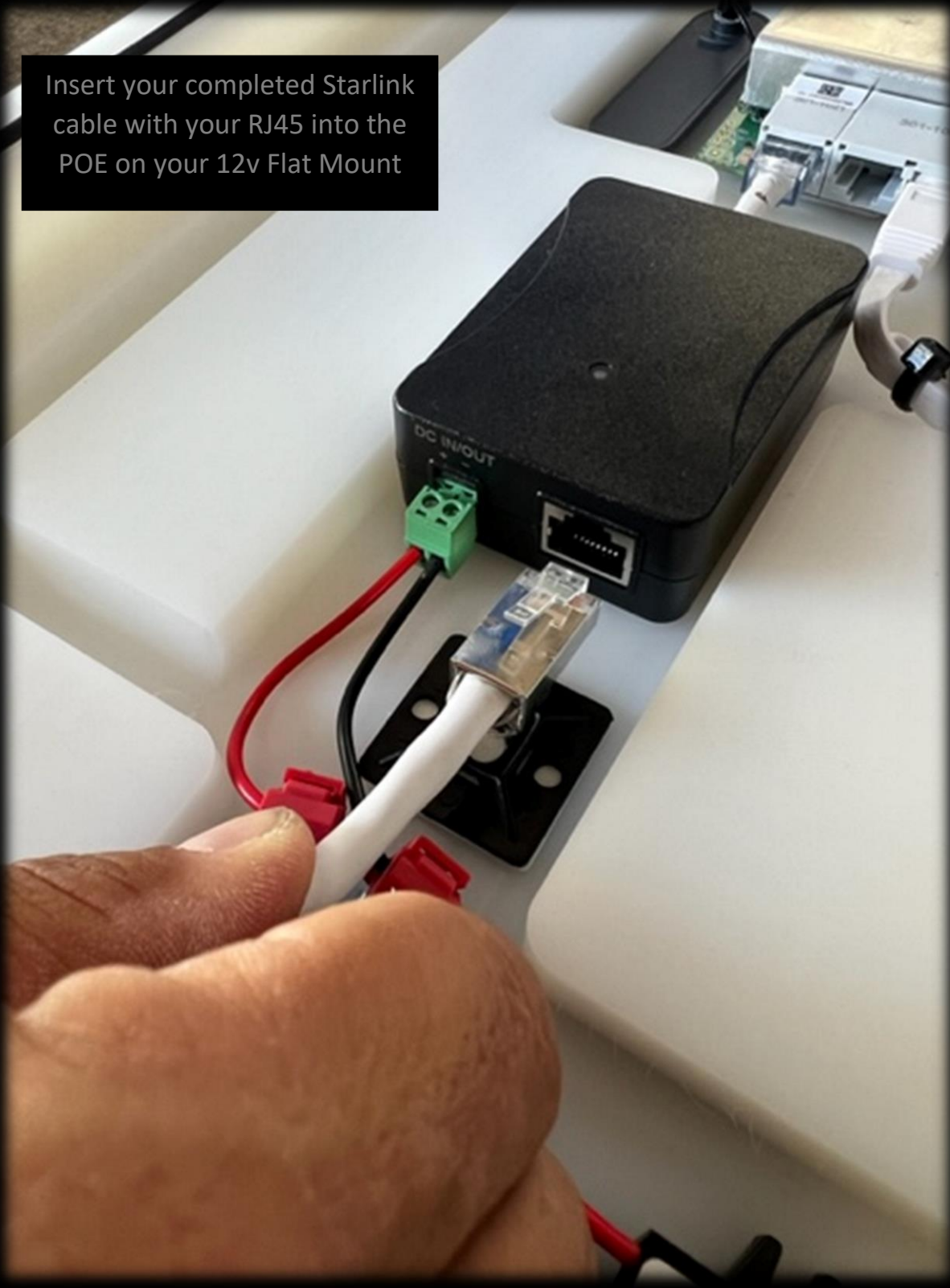




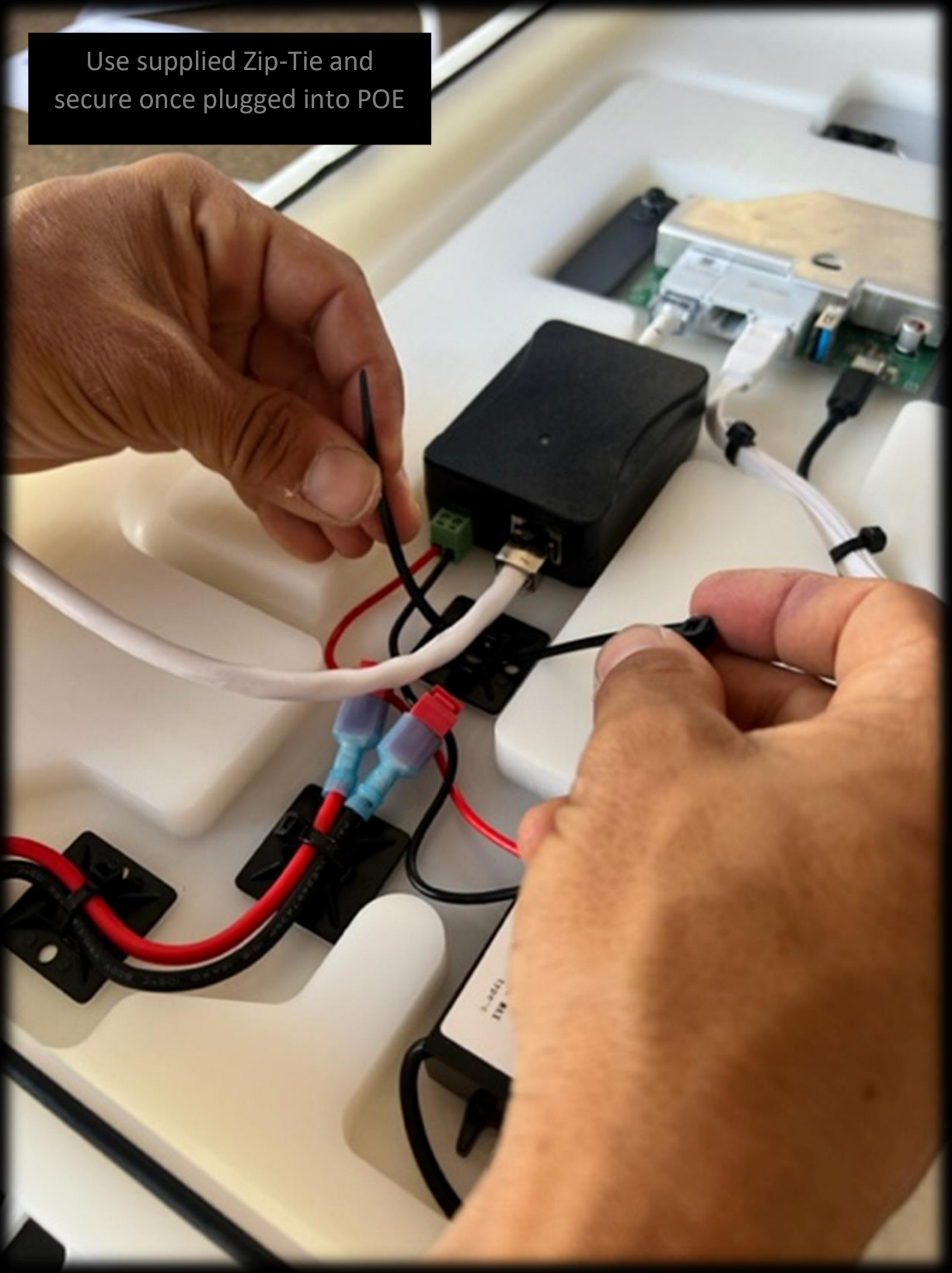


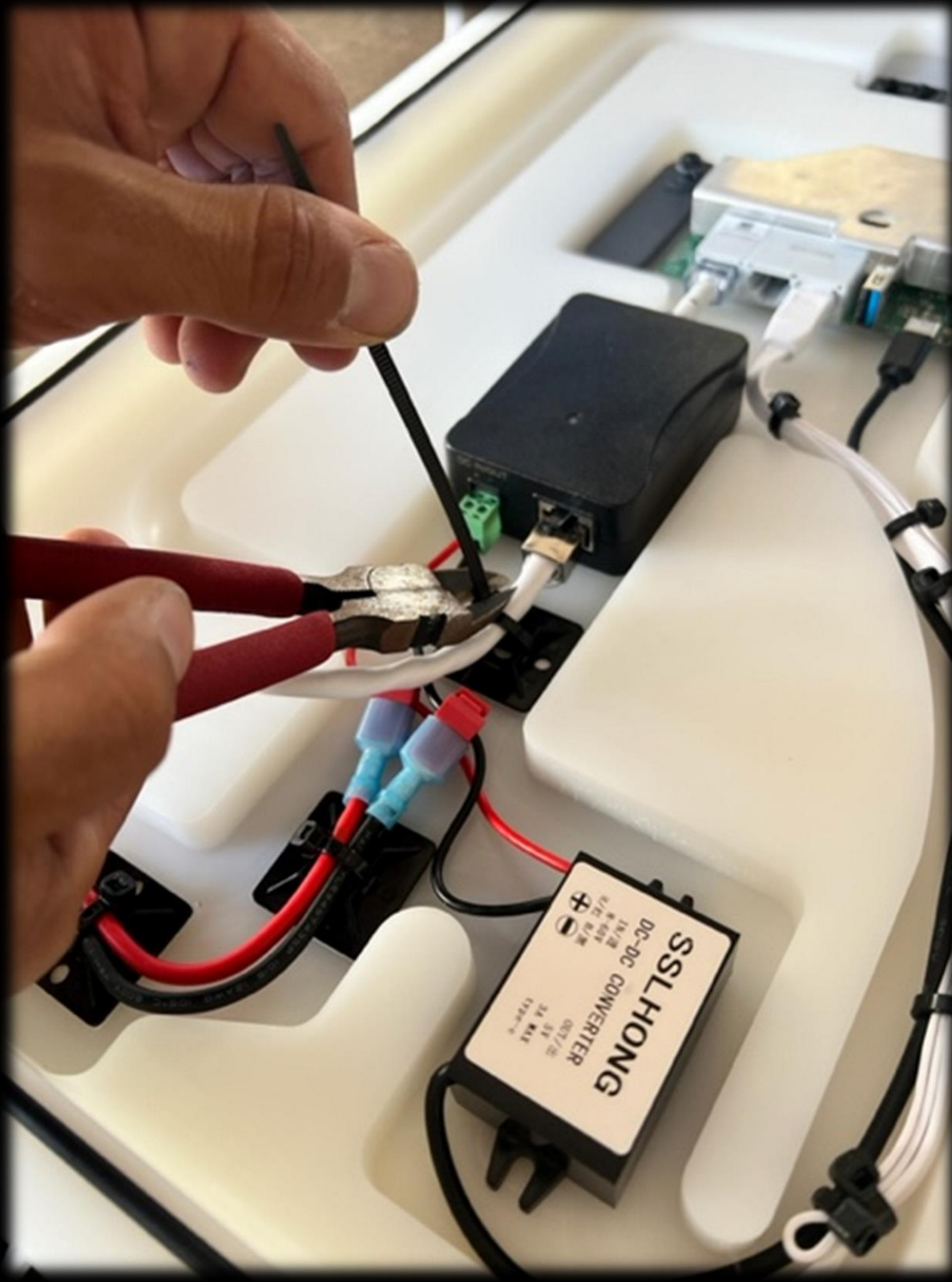
Insert into your RJ45 end into the crimp tool and crimp down a few times to insure a proper

Insert your completed Starlink cable with your RJ45 into the POE on your 12v Flat Mount

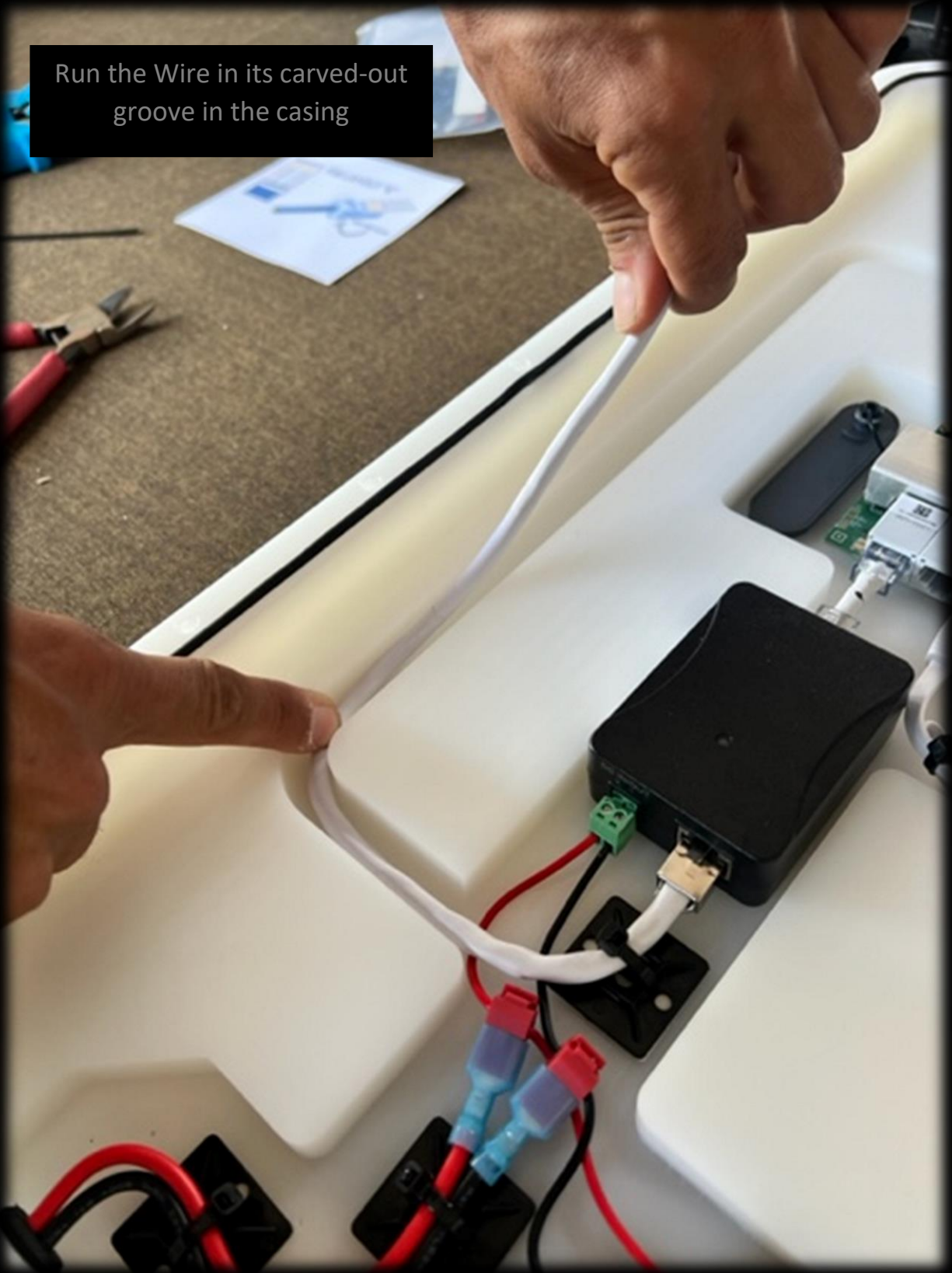


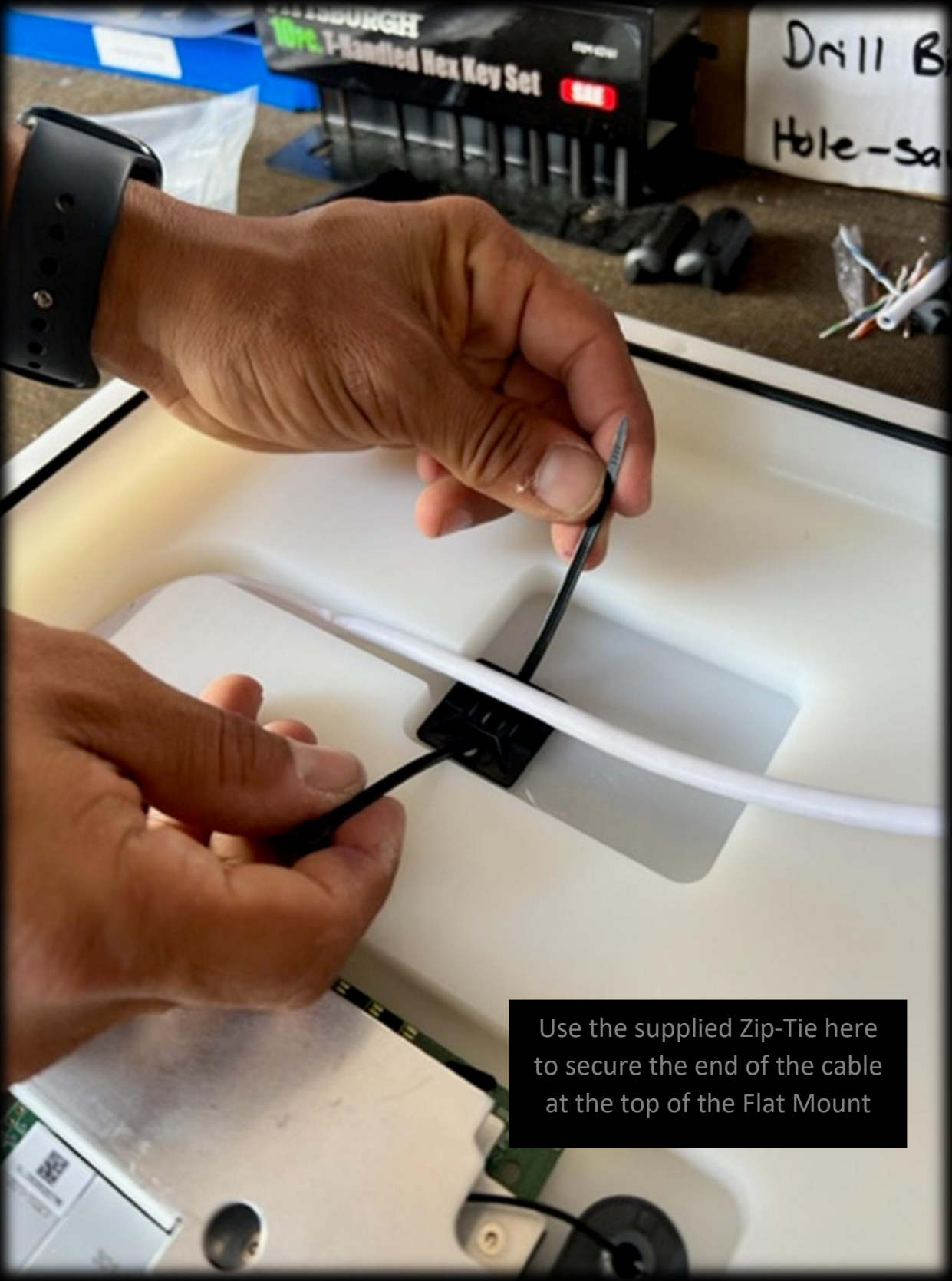
Use supplied Zip-Tie and secure once plugged into POE





Run the Wire in its carved-out groove in the casing





Use the supplied Zip-Tie here to secure the end of the cable at the top of the Flat Mount








Grab your board and plug in







Double check fitment to make sure the dish is not sitting higher than the case. If dishy is flush or below the case line, you are done and ready for your Lid. Place Lid on Flat mount use ALL the bolts to secure lid.

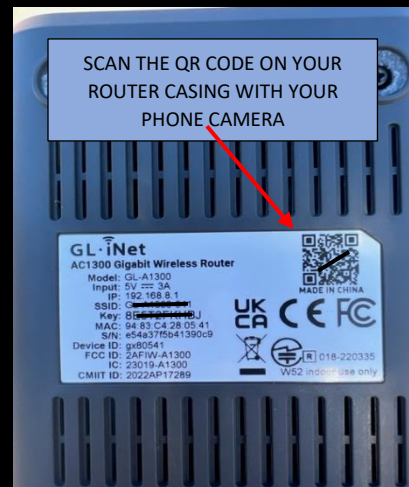
### **YOU ARE DONE!**

Use you the supplied Power Cable and ONLY the supplied Power Cable to any 12v Power Source and plug your 12v Flat Mount in!

# ***NEW ROUTER INFO!***

NOTE: Starlink App still works, minus changing your Wifi Network Name and Password, which you will do within the GL.iNet Interface.

To Access the GL.iNET Router Interface, connect to the WiFi by scanning the QR Code on the back of the plastic Router Case that was sent to you inside the Router Packaging. This will connect you to the default Network Name and Password. This info can also be found on the same plastic router case and can be entered in manually. The SSID is the default WiFi Network name and KEY is the Password.



Once connected to the Wifi type...

***192.168.8.1***

...into your web browser search bar on your phone or laptop. This will launch the GL.iNet Router Interface.

If it asks you for an Admin Password that password is: **PASSWORD**

If it first prompts your to pick a language, you will be creating your own Admin Password.

Once you have set up and accessed the GL.iNet Router Interface, You will be able to change your Wifi Network Name and Password, along with other router settings.



If you have any question, please contact us at  
[STARMOUNTS@YAHOO.COM](mailto:STARMOUNTS@YAHOO.COM)

You can also Call or Text Brandon @ (760)402-5417

Please share your install and setup photos with us! We also invite you to share your Photos on Facebook and Instagram and Tag Us in your post! We would love to share and showcase your setups!



**@STARMOUNTSYSTEMS**

Thank you again!