



# HART Host Quick Start Guide

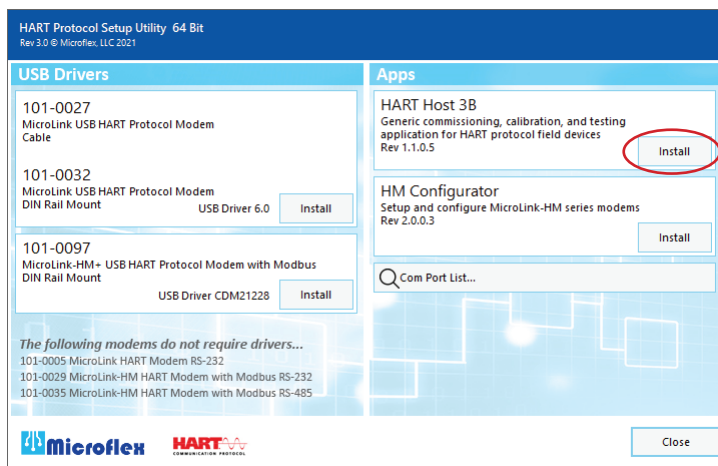


**Microflex HART Host Classification 3B** can perform basic configuration of any HART field device and meets HART requirements to be classified as a “Generic Host”.

HART Host is a software application for Windows based PCs used to commission and calibrate HART field devices. HART Host is compatible with all Microflex HART protocol modems and all HART field devices. HART Host requires Microsoft Windows 7 or higher operating system and a USB or serial HART protocol modem.

To install simply run **Msetup.exe** from the CD.

If you do not have a CD drive the file can be downloaded from [www.microflex.com/pages/support](http://www.microflex.com/pages/support)



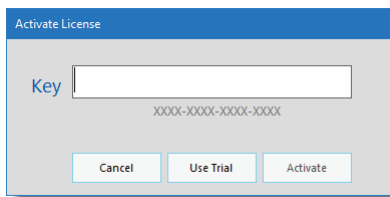
Click **Install** in the HART Host 3B window to begin the installation.

After installation, the HART Host Icon will be added to your start menu and on the desktop. Use the icon to run HART Host



HART Host 3B Icon

**Enter your licence key** in the Activate Licence dialog window to register the licence. Registering will require a connection to the internet. After the licence is registered HART Host can be used offline and a local licence file will be used.

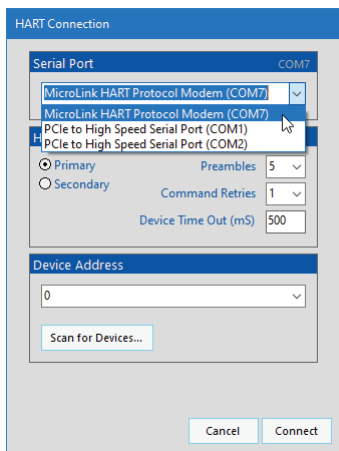


A licence key is provided, usually by e-mail, when you purchase a copy of Microflex HART Host.

If you don't have a key click **Use Trial** to obtain a free 60 day access.


To purchase a license key for HART Host visit [www.microflx.com](http://www.microflx.com)

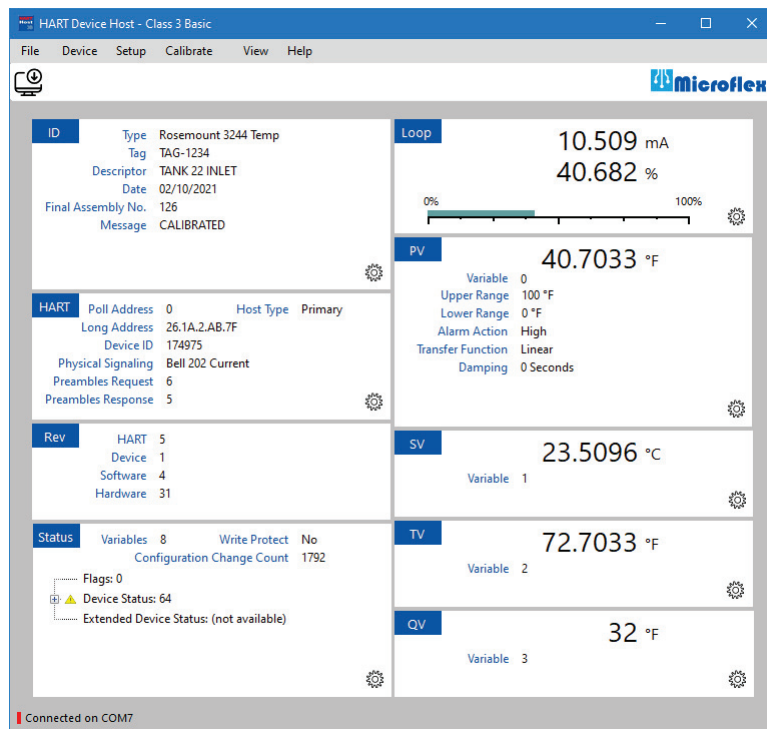
To enter a new key use the **Help > About HART Host** menu option to deactivate the trial licence. Then, re-run HART host to enter your licence key.



**Select a COM Port** to use for the HART modem connection. The HART Connection dialog window shows a drop-down list of available ports. The list is continuously updated so when you connect a USB modem it will be added to the list. Select your port and click **Connect** to begin reading the HART device parameters.

HART Host main screen displays a complete view of the HART device. Settings are grouped to simplify navigation. Quickly view and make HART device changes from one screen.

Click the  icon to configure the HART device values.

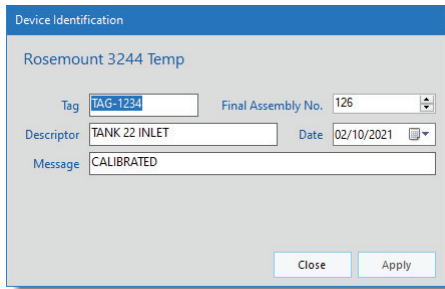


The screenshot displays the 'HART Device Host - Class 3 Basic' software interface. The window title bar includes 'File', 'Device', 'Setup', 'Calibrate', 'View', and 'Help' menus. The Microflex logo is visible in the top right corner. The main content area is divided into several sections:

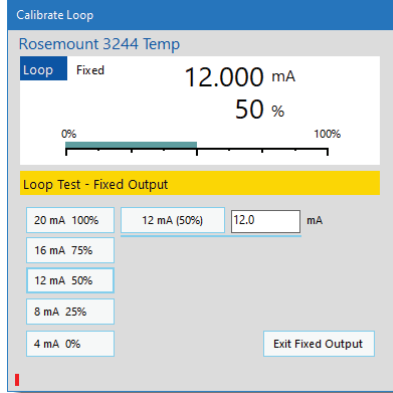
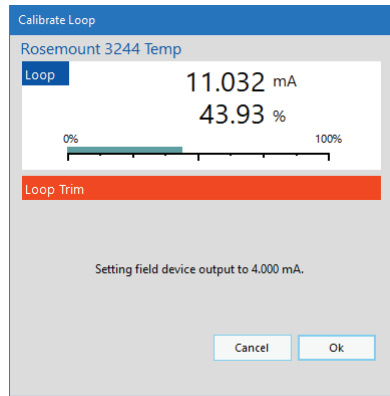
- ID Section:** Type: Rosemount 3244 Temp; Tag: TAG-1234; Descriptor: TANK 22 INLET; Date: 02/10/2021; Final Assembly No.: 126; Message: CALIBRATED.
- HART Section:** Poll Address: 0; Host Type: Primary; Long Address: 26.1A.2.AB.7F; Device ID: 174975; Physical Signaling: Bell 202 Current; Preambles Request: 6; Preambles Response: 5.
- Rev Section:** HART: 5; Device: 1; Software: 4; Hardware: 31.
- Status Section:** Variables: 8; Write Protect: No; Configuration Change Count: 1792; Flags: 0; Device Status: 64; Extended Device Status: (not available).
- Loop Section:** Displays a current value of 10.509 mA and 40.682 % with a 0% to 100% scale bar.
- PV Section:** Variable 0, 40.7033 °F. Parameters: Upper Range 100 °F, Lower Range 0 °F, Alarm Action High, Transfer Function Linear, Damping 0 Seconds.
- SV Section:** Variable 1, 23.5096 °C.
- TV Section:** Variable 2, 72.7033 °F.
- QV Section:** Variable 3, 32 °F.

Each section includes a gear icon for configuration. The bottom status bar indicates 'Connected on COM7'.

Quickly edit all HART device ID settings from a single dialog.



Wizards guide you through calibrations so that you don't miss any steps.



Fixed output testing forces the device's loop transmitter to a fixed value to aid in testing and calibrations.

Microflex, LLC  
35900 Royal Road  
Pattison, Texas 77423  
USA

Phone 281-855-9639  
Fax 832-422-4391  
[www.microflex.com](http://www.microflex.com)

