

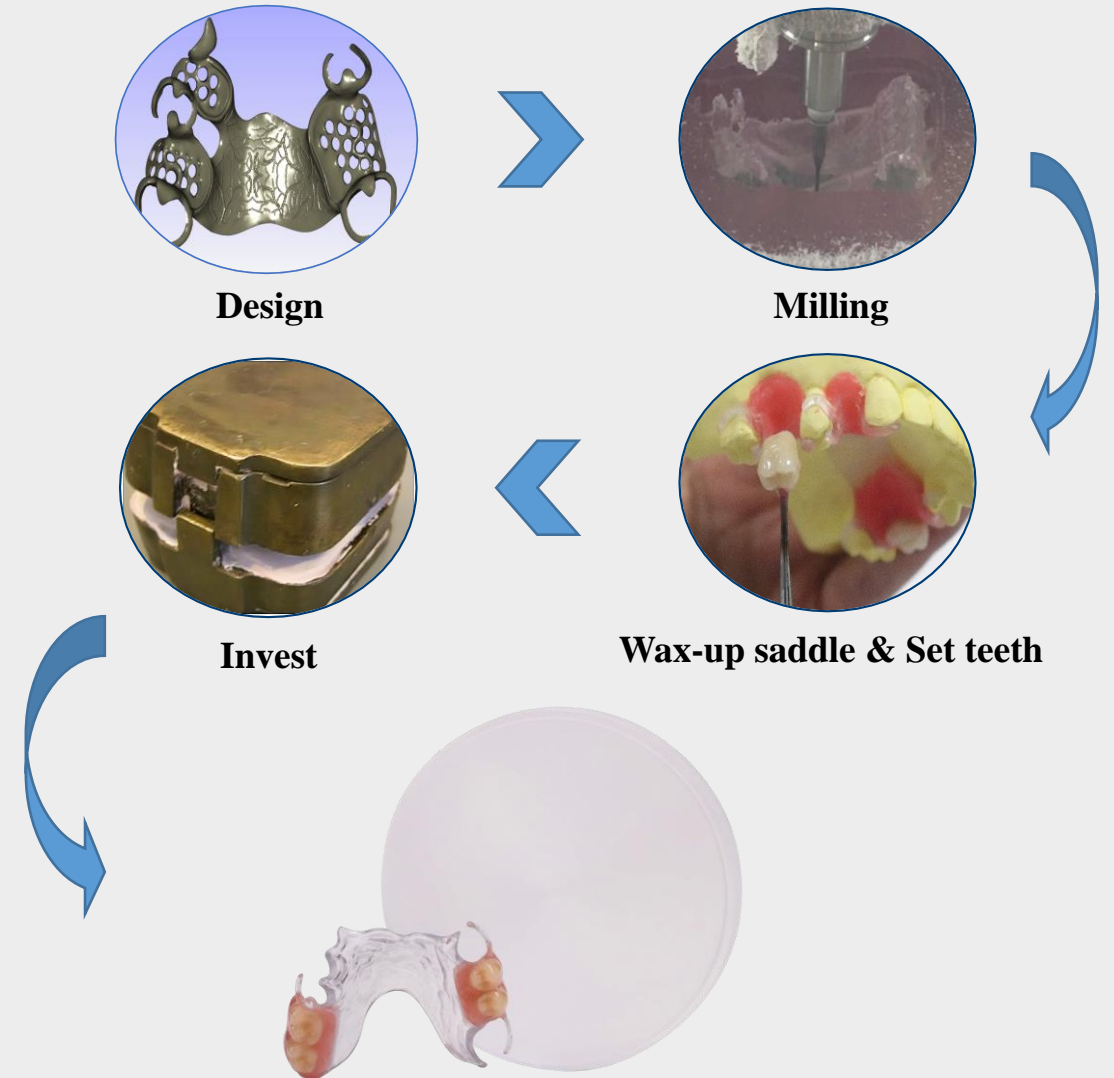
## **The Instruction of Fabricating the Non-metal Partial with NOBILCAM Flexible Discs**

NOBILCAM Flexible Disc(Nylon resin) is intended for aesthetically superior semi-flexible removable partial denture framework, which blends perfectly with the patient's gums, providing better function, aesthetics, comfort and durability.

## Advantages:

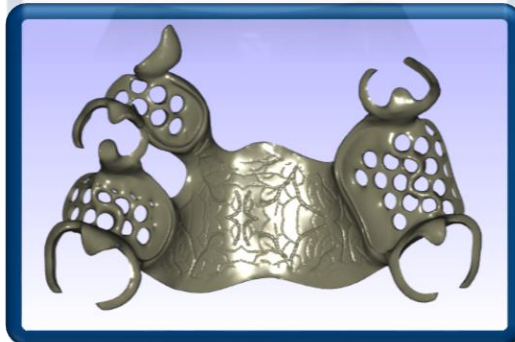
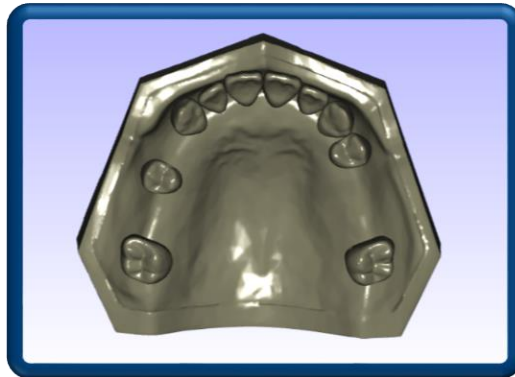
- Esthetic, comfortable and lightweight
- 100% digital for accurate fit
- Occlusal rests reduce tissue-borne pressure to reduce sore spots and offer excellent retention

- **Part Number: FLD9820-Clear**
- **Dimensions: 20mm×98.5mm (2 steps)**
- **Shade: Clear**



In order to have proper retention and esthetics, the flexible clasp is designed to be much wider and flatter to the tooth. This causes it to be more esthetic because it's thinner and light can pass through it. This creates two major benefits to the patient:

- (1) food will not get caught on it because it's flat to the tooth, and
- (2) it won't rub the cheek, making it significantly more comfortable for the patient.



## Prep Guide

### Partial Denture Framework (Minimum thickness requirements)

- Major: 1.2 mm
- Saddle Connectors Area: 0.8 mm

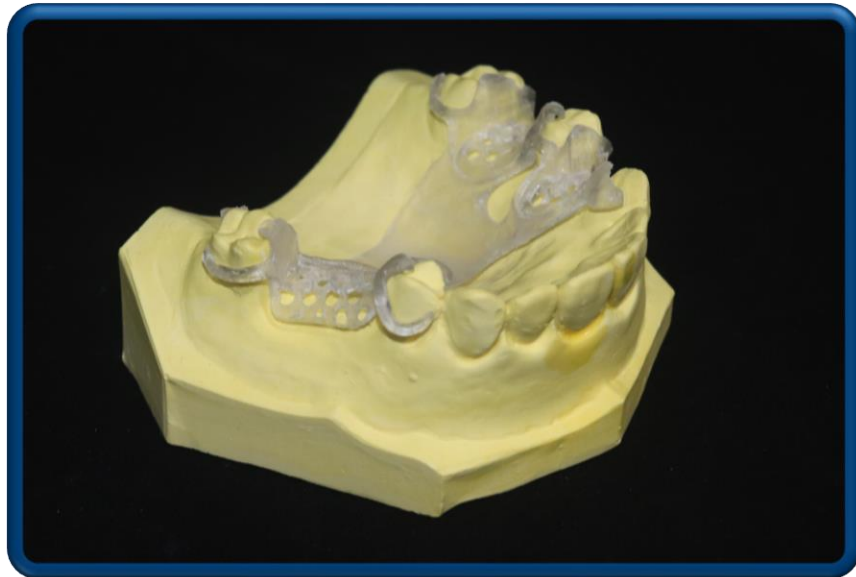
### Clasp on Anterior Tooth

- 3.0 mm where clasp joins framework thinning to 0.7 mm at tip

### Clasp on Posterior Tooth

- 4.0 mm where clasp joins framework thinning to 0.7 mm at tip

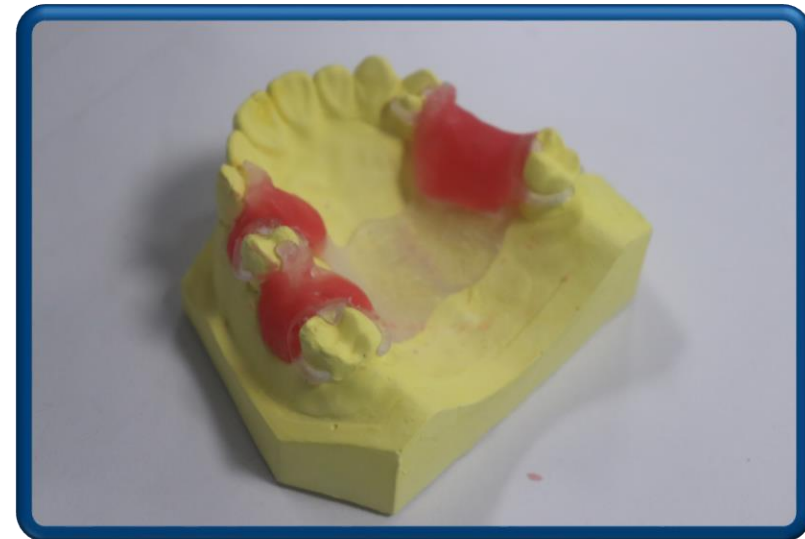
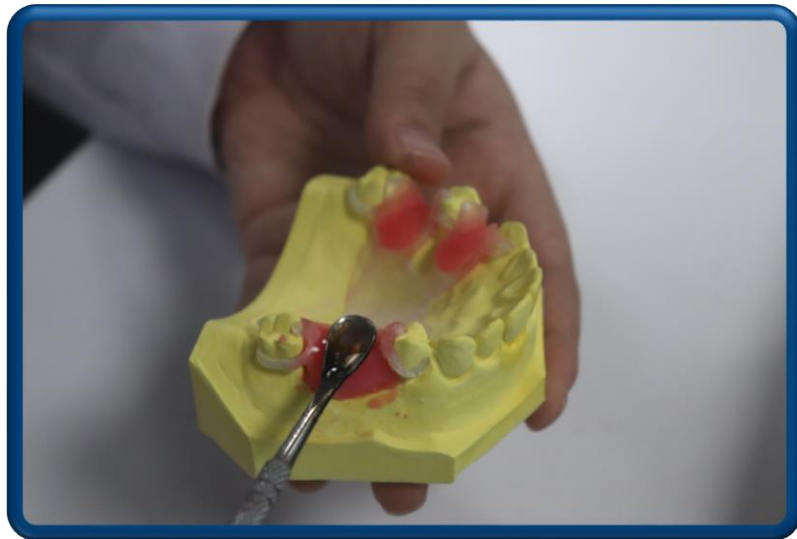
- After milling, the framework can then be polished and finished.
- Test the fit of the flexible framework on the model.
- All of the rests should be seated accurately with the rest seat preparations and the clasp arms contacting the desired locations of the abutment teeth.



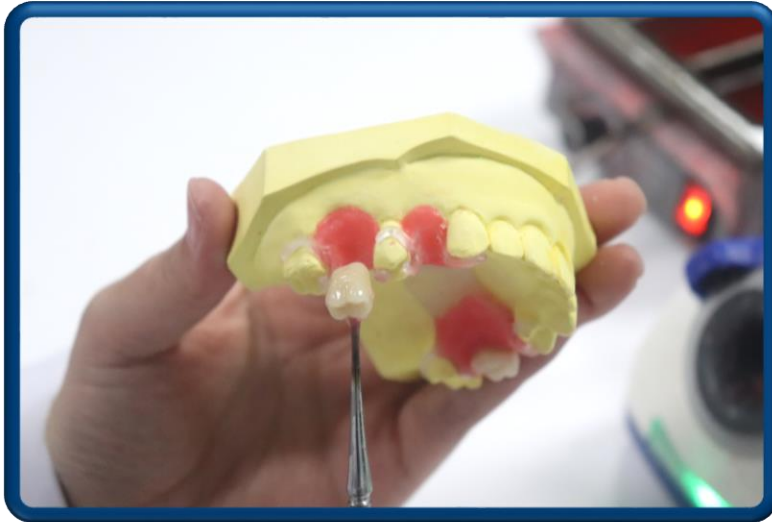
Recommend Spindle Speed: 21000RPM  
Recommend Cutting method: Wet cutting

- Determination of maxillomandibular relation
- Setting up or arrangement of teeth

Generally, the basic fabrication of occlusion rims is a laboratory procedure and the final contouring is accomplished at the dental chair by the dentist prior to recording of maxillomandibular relation. During the patient's appointment, the dentist could modify the shape, height and thickness of the occlusion rims in keeping with the patient's appearance and functional requirements.



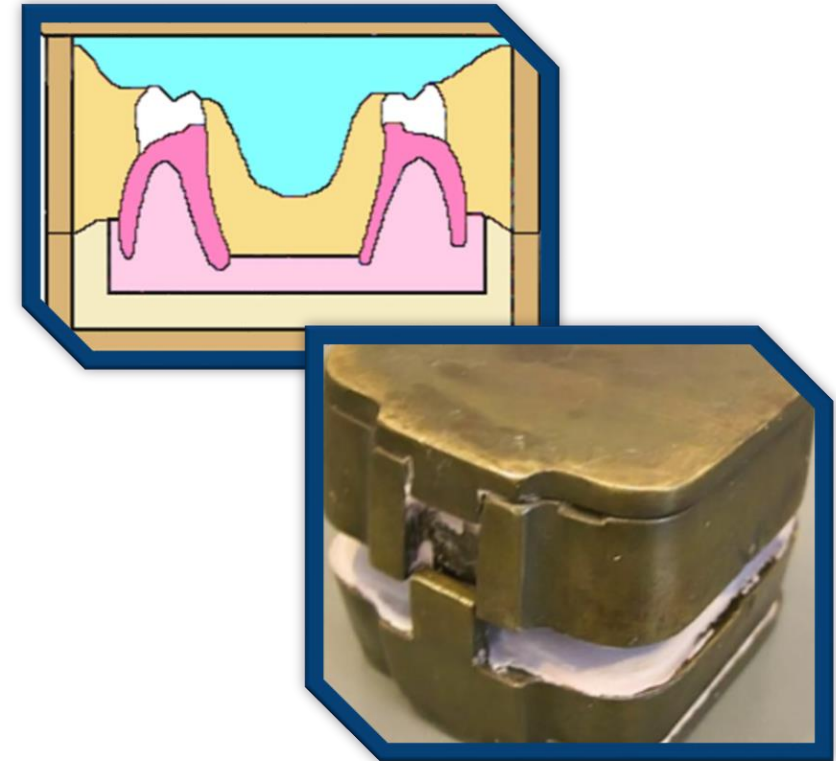
- Select the proper teeth in type and shade.
- Start the set-up with the verified wax bite-rim.
- For some cases, the teeth should be polished to fit it.

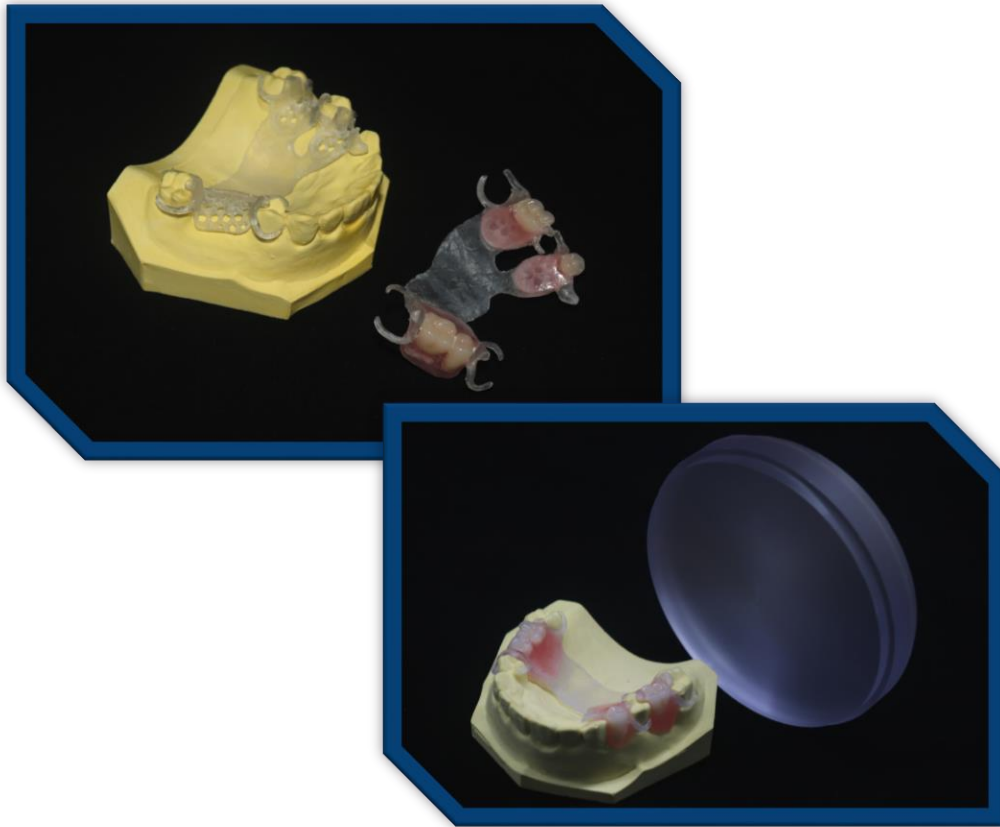


#Trim the wax to reduce the acrylic trimming time later



1. Investing the cast with the waxed denture in a flask to make a sectional mold that is used to form the acrylic resin denture base. Fill the flask with gypsum and cover it.
2. After setting of gypsum, wax elimination procedure is to be done. Put the flask in boiling water for 5-7min and separate the 2 parts of the flask.
3. Remove the remained wax using the boiled water and detergent. Then place the clean flask in open air to dry and cool it.
4. Isolate the gypsum of the flasking by physical separator or chemical isolator (silicone or alginate).
5. Prepare the acrylic resin (mix the powder and liquid). Put the acrylic in the mold, press the flask in a clamp and do curing immediately.





1. Remove the flask from the clamp and separate the 2 parts of the flask. Liberate the partial denture with the model carefully.
2. Remove the excess of acrylic using the acrylic bur.
3. Polish and then get the non-metal partials with flexible framework.