



PRISM POWDER COATINGS LTD.

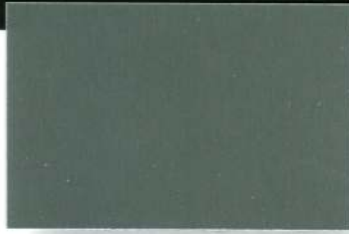
Specialty product selector



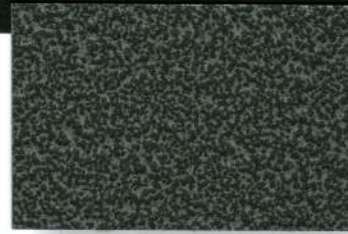
**PB-0134-LT**  
BLACK SANDTEX



**PC-0100-H**  
CLEAR



**HS-1518-ST**  
TB SILVER VEIN



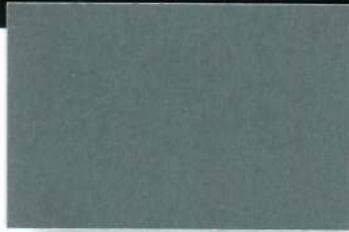
**PS-1184-HT**  
WM SILVER VEIN



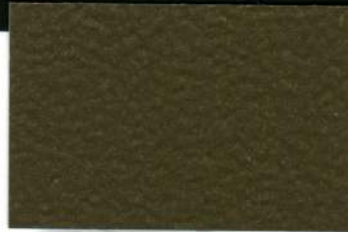
**PB-0287-ST**  
BLACK MINI TEXTURE



**PC-0182-M**  
SD MEDIUM GLOSS CLEAR



**HS-1516-ST**  
TB BRONZE VEIN



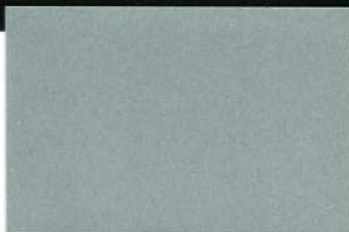
**PS-0677-HT**  
GOLD VEIN



**PB-0218-HT**  
BLACK TEXTURE



**PC-0119-L**  
LOW GLOSS CLEAR



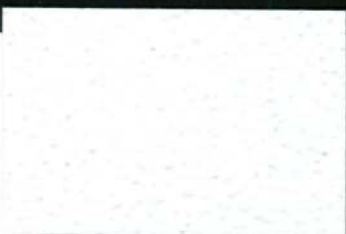
**HS-1517-ST**  
TB COPPER VEIN



**PS-0676-HT**  
COPPER VEIN



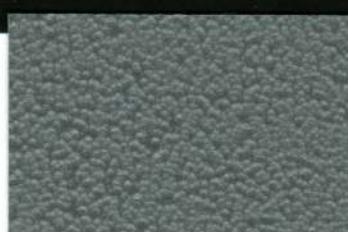
**PW-0806-HT**  
SNOW WHITE TEXTURE



**PC-0199-L**  
SD SATIN SMOKED CLEAR



**PS-1055-HT**  
SILVER HAMMERTONE



**PS-1231-GT**  
BRIGHT SILVER VEIN



**EA-1682-G**  
70 GREY PRIMER



**ES-0701-G**  
ZINC RICH PRIMER



**PS-1499-HT**  
HAMMERTONE NOIR



**PS-0856-LT**  
RUST POLYESTER

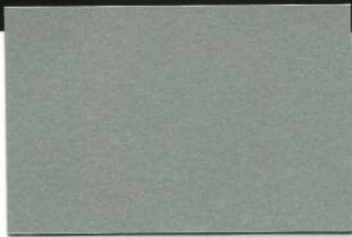




**ES-1594-L**  
ANODIZED BLACKENED STEEL



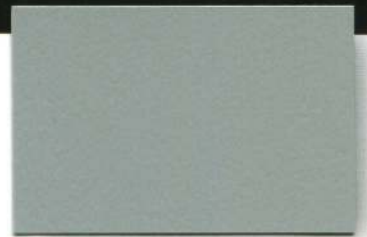
**HS-0460-S**  
TB PLATINUM



**PS-1295-LT**  
TB GUN METAL SANDTEX



**PS-1301-L**  
SD RAL 9006 WHITE ALUMINUM



**PS-0976-G**  
TB GUN METAL



**PS-0953-H**  
TB SPARKLE SILVER



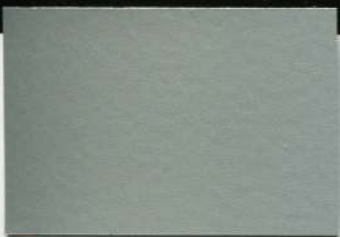
**PS-0195-LT**  
TB SILVER SANDTEX



**PS-0135-H**  
BRIGHT SILVER



**HS-0939-L**  
TB ANODIZED ALUMINUM



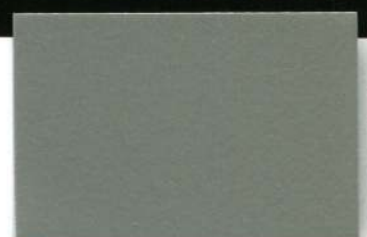
**HS-1362-M**  
TB CHAMPAGNE METALLIC



**HS-1071-LT**  
TB SS NICKEL



**PS-1300-L**  
SD RAL 9007 GREY ALUMINUM



**HS-0225-H**  
TB CHROME



**PS-0224-G**  
TB SATIN NICKEL



**HS-0129-G**  
SILVERADO



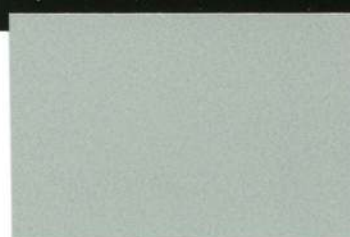
**US-1302-L**  
SATIN PYRITE



TRUE BOND (TB) is Prism Powder Coatings' trademark assuring premium quality and consistent bonding of metallic and mica. The process of bonding involves a step that fuses the metallic particles to the powder particles ensuring an even, easy to apply to product that is reclaimable.

The aluminium chips on this card are powder coated for accurate depiction of appearance and finish. Some variation may result from application conditions. Clear coating of metallics will extend durability.

**PS-0114-G**  
SILVER



**US-1303-L**  
BURNT PENNY







321 Edgeley Blvd. Concord  
Ontario, Canada L4K 3Y2  
Telephone: (905) 660-5361  
Fax: (905) 660-5362



2890 Carquest Drive  
Brunswick, Ohio 44212  
Telephone: (330) 225-5626  
Fax (330) 225-5688

**ORDER DESK:**

**1-800-PRISM-11** [www.prismpowder.com](http://www.prismpowder.com)

**(1-800-774-7611)**

Prism endeavours to stock all products on this card. As the market dictates, we may at our discretion, discontinue or expand the stocking program. Products are generally packaged in 25 kg (55 lbs.) boxes with 750 kg (1650 lbs) per pallet. Prism can supply all your powder coating requirements from single box custom matches to large runs. The customer is responsible for determining the suitability of a powder for a particular application.

REV 214