

# JOKESTER

Makeup Kit



mehron  
MAKEUP

## JOKESTER Makeup Kit

Makeup Artist: @dsaladbar01

Mehron, Inc.  
Chestnut Ridge, NY 10977  
Mehron Ltd. London EC1M 4BH  
Mehron EU, NL-2622LB-6  
[www.mehron.com](http://www.mehron.com)  
Made in USA

mehron  
MAKEUP

Easy  
Step-by-Step  
Instructions

LOOK 1



**Step 1:** Apply Green Liquid Makeup to hair and comb through for temporary hair color.



**Step 2:** Apply the white cream makeup to clean skin using the non-latex sponge provided. Pat onto skin for even, full coverage. Once even base is achieved, press powder on top with puff to set the makeup.



**Step 3:** On top of the powdered white makeup, trace out the triangle above and below the eyes using the blue cream makeup and the detail brush provided. Once desired shape is achieved, fill in with blue cream makeup.



**Step 4:** Use the detail brush provided to outline the eyebrows, nose, and mouth with the red cream makeup and then fill in.

**Step 5:** To lock in your look, press powder on top of the eye, nose, and mouth designs using the powder puff.

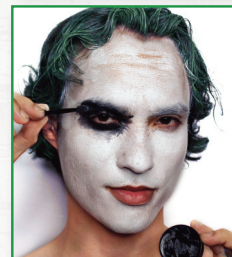


LOOK 2



**Step 1:** Apply Green Liquid Makeup to hair and comb through for temporary hair color. *(Pictured in Step 1 of LOOK 1)*

**Step 2:** Apply the white cream makeup to clean skin using the non-latex sponge provided. Distress the makeup by using a clean sponge to wipe away areas where wrinkles form (forehead and eyes, etc.). Set white cream makeup by pressing powder into the skin with the puff provided.



**Step 3:** Apply black cream makeup around the area of each eye, then use the detail brush to smudge some of the edges to create a worn-in, wrinkled effect.

**Step 4:** Use the detail brush and the red cream shade to outline the lips then extend the lip line outward to create a grin. Smudge edges to create wound FX, then apply a small amount of the black cream to the center of the red to create depth to the wound.



**Step 5:** To lock in your look, press powder on top of the eyes and mouth designs using the powder puff.

**REMOVAL** – Remove cream makeup by using soap and water. Patch test recommended before application.

