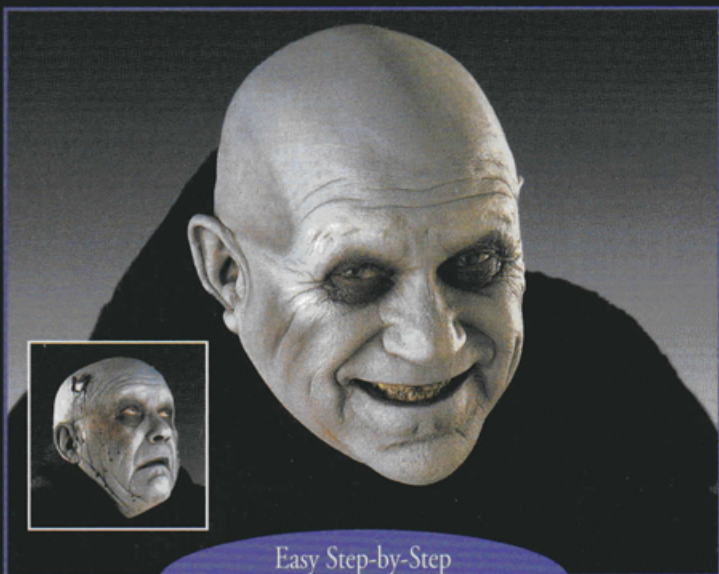


BN Ben Nye®

Ghoul Kit

Washable and Non-Toxic Makeup

Easy Step-by-Step
Full Color Directions Included

HK-7



As 20th Century Fox Makeup Director, Ben Nye, Sr. designed an ensemble of time-honored characters now immortalized on the silver screen. We encourage you to create your own characters with Ben Nye Makeup as you follow our professional directions.

GETTING STARTED This Kit includes all the basic professional quality components required to create zombies, "living dead" or similar characters who are generally deceased. Colors are concentrated, so use them sparingly. The optional items listed below will enable you to achieve even better results.

Nose & Scar Wax
Liquid Latex
Castor Sealer
Neutral Set Face Powder
Zombie Rot or Decay Tooth Colors

Bald Cap
Extra Flat Brushes
Extra Sponge Sections
Velour Powder Puff

Practice makes perfect so plan to practice your makeup design. Anticipate spending about forty-five minutes to complete your character. For easy removal, apply *Quick Cleanse*, followed by *Hydra Cleanse* or soap and water.

PREPARATION Clean face with *Hydra Cleanse* or soap and water before applying makeup. Discontinue use if skin irritation occurs. Parental supervision is required for use on children.

DIRECTIONS

Pre-Makeup: If desired, apply a bald cap. See Ben Nye's instructional video, "How to Apply a Bald Cap" for best results. Apply a thin layer of *Nose & Scar Wax* to cover eyebrows (add a small amount of *Quick Cleanse* to wax for easier blending). To seal, apply a thin coat of *Liquid Latex* to wax followed by *Castor Sealer*.

1. **Base:** Apply *Ghoul Grey Character Base* to face, over bald cap, ears, and neck. Sprinkle *Neutral Set Powder* on puff. Rub puff together, and gently apply powder to entire face. Dust off excess. Dab a moistened sponge over makeup to intensify grey coloring. *Note: Powdering at this point is very important to control application of subsequent colors!*

2. **Black:** Apply with a flat brush to upper eyelid and at lower "bag" area leaving a narrow rim directly beneath lower lashline for *Misty Violet*. Shadow at chin, half-circle at temple, streaks to cheek bone and cheek hollow area. Contour ears, nasal fold, nostril openings and faintly across forehead.

3. Blend all shadow areas with a clean, dry brush to soften contours. Powder with *Neutral Set*.

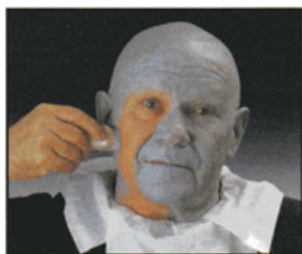
4. **Misty Violet:** Apply beneath lower lashline above *Black*. Apply to inside area of lips. (Do not apply to outer lip area like lipstick.)

5. **Highlight:** Apply *Highlight* adjacent to shadows over brow, tip of nose, above cheekbone, tip of chin and nasal fold as shown. Blend *Highlights* with a flat brush into *Ghoul Grey Base* for subtle effects.

6. **Teeth:** For distressed teeth, wipe teeth dry with tissue. Mark irregularly with a sharpened *Black Pencil* or apply *Tooth Colors*.

Finishing Touches: Powder entire makeup again. Remove excess powder. Add additional colors as needed. Add costume and ghoulish grin.

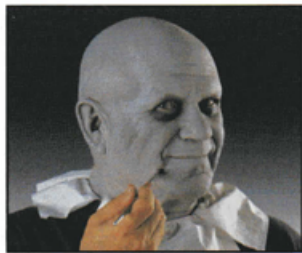
Alternate Gory Details: Remove makeup from areas of face where wounds are to be applied. Use pre-made latex appliances or create wounds using *Nose & Scar Wax* or *Liquid Latex*. Press appliance or Wax into tacky *Spirit Gum*, then seal with *Liquid Latex*. Allow to dry. Coat with *Castor Sealer*. Apply *Ghoul Base*, *Stage Blood* and *Thick Blood* to wound.



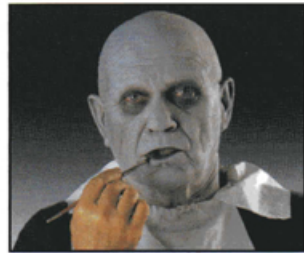
1



2



3



4



5



6

Ben Nye Company, Inc.
Los Angeles, CA 90016

Printed in U.S.A.
Copyright 2004