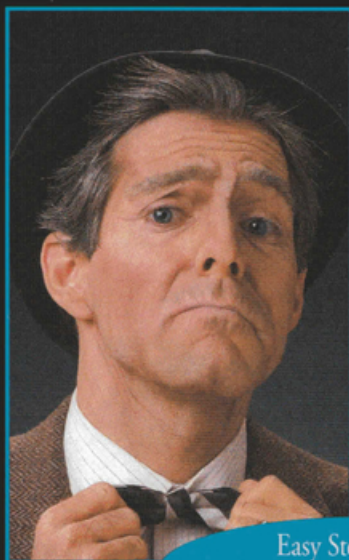


BN Ben Nye® Old Age Kit

Washable and Non-Toxic Makeup



Easy Step-by-Step
Full Color Directions Included

HK-6



As 20th Century Fox Makeup Director, Ben Nye designed an ensemble of time-honored characters now immortalized on the silver screen. We encourage you to create your own characters with Ben Nye Makeup as you follow our professional directions.

GETTING STARTED This Kit includes all the basic professional quality components required to create an old age design for either a male or female. Colors are concentrated, so use them sparingly. The optional items listed below will enable you to achieve even better results.

Fair Translucent Powder
Quick Cleanse Remover
Natural Lipstick (LS-7) or
Siren Red Lipstick (LS-15)
Hydra Cleanse

Velour Powder Puff
Extra Flat Brushes
Extra Sponge Sections
Pencil Sharpener

Practice makes perfect so plan to practice your makeup design. Plan to spend at least forty-five minutes to complete your character. Apply *Ben Nye's Quick Cleanse* for fast clean-up, followed with *Hydra Cleanse* or soap and water.

PREPARATION Clean face with *Hydra Cleanse* or soap and water before applying makeup. If needed, use an astringent to remove excess oiliness. Discontinue use if skin irritation occurs. Parental supervision is required for use on children.

DIRECTIONS This Kit is suitable to create either an aged male or aged female character. The directions are applicable for both.

1. Apply *Old Character Base* to face, ears and neck with latex sponge. Pat sponge over entire face to even texture.

Shadows: Apply *Brown Shadow* with a flat brush to temples, forehead, bridge of nose, lower eyelid area, cheek hollows, nasal fold, chin and neck.

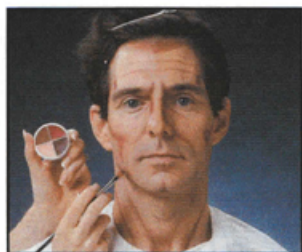
2. **Highlights:** Apply *Ultralite Highlight* with a flat brush adjacent to shadow contours as shown. Lightly brush *Ultralite* onto eyelashes to soften and "age".

3. **Blending:** Blend all shadow and highlight areas with a clean "dry" brush to soften contours. With a flat brush, deepen blended shadow areas with *Misty Violet*; blend lightly into contours. Sprinkle powder on puff; fold in half, then rub puff together to disperse powder evenly. Gently press to face and neck to set makeup.

4. **Wrinkle Detail:** Apply *Ultralite* to latex sponge. Wrinkle forehead and gently pat with sponge. *Ultralite* will accentuate high points of wrinkled skin. Repeat for crow's feet at corners of eyes. Emphasize wrinkles with a sharpened *Brown Pencil* and additional *Brown Shadow* to "creases" created by highlights. Apply *Capillary* with *Stipple Sponge* to add dimension and texture. With a small flat brush, stipple *Brown* to simulate liver spots.

5. **Lips:** Apply *Capillary*, LS-15 *Siren Red* or LS-7 *Natural Lipstick* to lips. Lightly powder. Pucker lips tightly and pat *Ultralite* over wrinkled lips. Lightly embellish vertical creases between highlights on lips with sharp *Brown Pencil*.

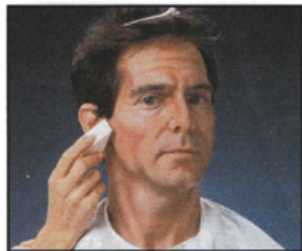
6. **Hair:** Shake *Silver Grey Hair Color* well and pour a small amount into a shallow dish. Brush color into hair with a toothbrush. Apply to eyebrows and facial hair. Add costume and/or wig.



1



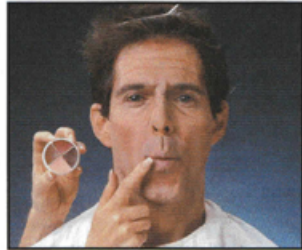
2



3



4



5



6