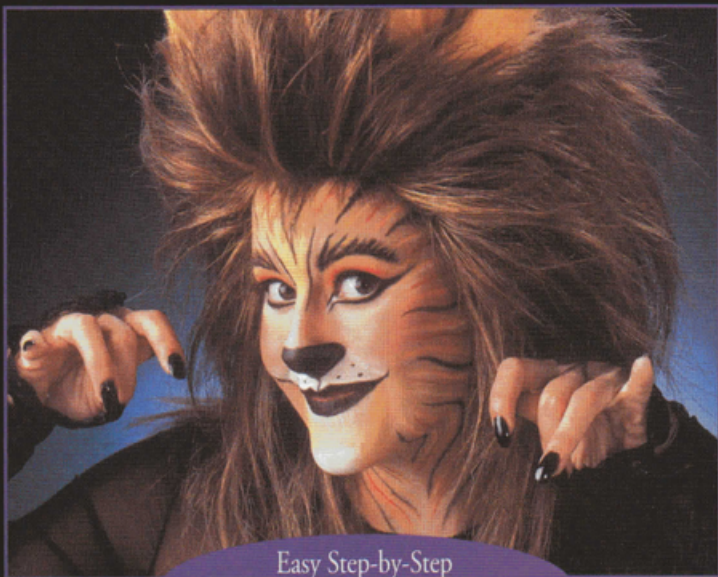


BN Ben Nye® Cat/Lion Kit

Washable and Non-Toxic Makeup



Easy Step-by-Step
Full Color Directions Included

HK-5



As 20th Century Fox Makeup Director, Ben Nye designed an ensemble of time-honored characters now immortalized on the silver screen. We encourage you to create your own characters with Ben Nye Makeup as you follow our professional directions.

GETTING STARTED This Kit includes all the basic components required to create this design. Colors are concentrated, so be careful to use them sparingly. The optional items listed below will enable you to achieve more professional results.

Neutral Set Face Powder
Velour Powder Puff
Pressed Rouge
Rouge Brush
False Eyelashes
Mascara
Russian Red Lipstick (LS-34)

Extra Flat Brushes
Brush Cleaner
Hydra Cleanse
MagiColor™ Liquid Paints
Gold Aqua Glitter Paint
Copper Aqua Glitter Paint

If time permits, practice your makeup design. Plan to spend at least forty-five minutes to complete your character. Apply *Ben Nye's Quick Cleanse* for fast clean-up, followed with *Hydra Cleanse* or soap and water.

PREPARATION Clean face with *Hydra Cleanse* or soap and water before applying makeup. Use an astringent to remove excess oiliness. Discontinue use if skin irritation occurs. Parental supervision is required for use on children.

DIRECTIONS

1. Apply *Cat Foundation* to entire face and neck. If necessary, apply a *Highlight* or concealer to diminish skin blemishes or discolorations. Set with *Neutral Set Face Powder*. Apply *Pressed Rouge* to cheeks, if desired.

With *Black Pencil*, outline upper lip, eyes and nose as shown. Extend lines at outer and inner corners of eyes. With flat brush, fill in nose with *Black* creme makeup and intensify lines around eyes.

2. **Black Markings:** Apply fur stripes at forehead, around face and neck as shown with *Black* creme makeup or *Black Pencil*. Very lightly soften fur on neck with sponge or clean, dry brush. Etch eyebrows with *Black Pencil*. Set with powder.

3. **Rust Markings:** With flat brush, paint on fur stripes and apply shadow to upper eye lids with *Rust* creme makeup. Stripe color along each side of nose and feather edges. Set with powder.

4. **Yellow Markings:** Paint on fur stripes between *Black* and *Rust* markings with *Yellow* creme makeup. Etch *Yellow* between *Black* brow strokes. Apply to chin as shown. Paint in a downward "V" from forehead to bridge of nose as shown. Highlight frontal bone (above *Rust* shadow). Set with powder.

5. **White Detail:** Apply *White* creme makeup to muzzle, tip of chin and inner corners of eyes. Apply to bridge of nose, under bottom lip and front of neck. Blend softly with sponge.

6. Apply *Black* to lips and add dots to muzzle area. Set entire makeup with *Neutral Set Powder*.

7. If desired, intensify fur stripes with additional creme makeup or *MagiColor Liquid Face Paints* (no powder necessary). Apply additional touches: False eyelashes, mascara, *Russian Red Lipstick* on lower lip, and *Gold* and *Copper Aqua Glitter* highlights. Complete character with costume and wig. Meow!



1



2



3



4



5



6