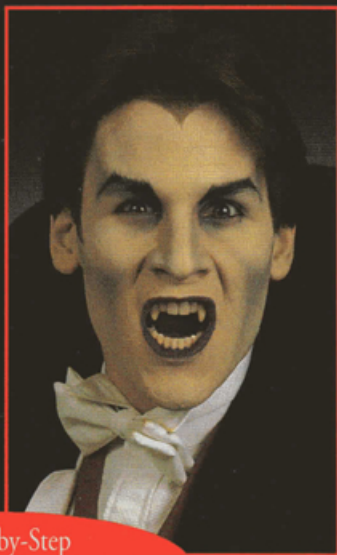


BN Ben Nye® Vampire Kit

Washable and Non-Toxic Makeup



Easy Step-by-Step
Full Color Directions Included

HK-1



As 20th Century Fox Makeup Director, Ben Nye designed an ensemble of time-honored characters now immortalized on the silver screen. We encourage you to create your own characters with Ben Nye Makeup as you follow our professional directions.

GETTING STARTED This Kit includes all the basic professional quality components required to create this design. Colors are concentrated, so use them sparingly. The optional items listed below will enable you to achieve even better results.

<i>Blithe Spirit (Alternate Base)</i>	<i>Dry Rouge</i>
<i>Gothic White Compacté</i>	<i>Tooth Fairy Classic Fangs</i>
<i>Fair Translucent Powder</i>	<i>Quick Cleanse</i>
<i>Midnite Black Hair Color</i>	<i>Brush Cleaner</i>
<i>Silver Grey Hair Color</i>	<i>Extra Brushes</i>
<i>True Red Lipstick</i>	<i>Velour Powder Puff</i>
<i>Mascara</i>	<i>Dental Adhesive</i>

Practice makes perfect, so plan to practice your makeup design. Be prepared to spend about forty-five minutes to complete your character. For quick clean-up, use Ben Nye's *Quick Cleanse* followed by soap and water.

PREPARATION Wash face and neck with soap and water, then use an astringent to remove excess oiliness. Avoid cleansing cream or oil-based cleansers as they will thin makeup. *Discontinue use if skin becomes irritated. Parental supervision is recommended for use on young children.*

DIRECTIONS

1. Apply *Vampira Foundation* with Sponge to entire face and neck. Blend beneath the jawline. Makeup is densely pigmented and does not require a heavy application.

2. **Shadow:** Contour face with *Grey* shadow from the *Vampire Palette*. Apply with brush to cheek hollows, eyelids and temples to create a sculpted, angular look. Shade along bridge and both sides of nose, and connect shadow across nostrils. Contour under eye bags. Shadow eyelids with *Grey* for a sunken appearance.

3. **Blending:** Blend and soften contour edges with fingers, brush or sponge as shown on the model's left side.

4. **Highlight:** Apply *White* to highlight contours on the cheek, chin, temples, frontal bone and beneath brow.

5. **Eyebrows:** Etch or darken eyebrows and form widow's peak with pencil or *Black* shadow from the *Palette*. With a small brush, line lower lashes with *Black*. Apply *Maroon* parallel to *Black* liner. Set makeup with *Fair Translucent Face Powder* or *Gothic White Pressed Powder Compacté*. Gently dab makeup with a moistened sponge to remove excess powder.

6. **Final Touches:** Apply *Maroon* shade or *True Red Lipstick* to lips. Apply black mascara, if desired.

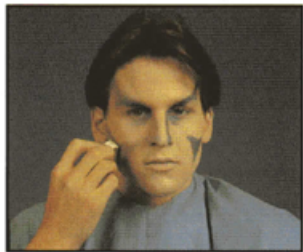
Insert Vampire teeth with denture adhesive, or apply *Tooth Fairy Classic Fangs* according to directions. Add *Stage Blood* to corner of mouth. Add a wig or darken hair with *Midnite Black Hair Color* to complete your character. If desired, streak hair with *Silver Grey Hair Color*.



1



2



3



4



5



6