

BN Ben Nye® 3-D Effects Kit

Washable and Non-Toxic Professional Quality Makeup



Easy Step-by-Step
Full Color Directions Included



As 20th Century Fox Makeup Director, Ben Nye designed an ensemble of time-honored characters now immortalized on the silver screen. We encourage you to create your own characters with Ben Nye Makeup as you follow our professional directions.

GETTING STARTED This Kit includes all the basic components required to create this design. Colors are concentrated, so be careful to use them sparingly. The optional items listed below will enable you to achieve more professional results.

<i>Extra Sponge Sections</i>	<i>Brush Cleaner</i>
<i>Neutral Set Face Powder</i>	<i>Pencil Sharpener</i>
<i>Velour Powder Puff</i>	<i>Extra Flat Brushes</i>
<i>Modeling Tool</i>	<i>Thick Blood</i>
<i>Quick Cleanse Remover or Baby Oil</i>	<i>Coral Pressed Rouge</i>
<i>Hydra Cleanse</i>	<i>Black or Nicotine Tooth Color</i>

If time permits, practice your makeup design. Plan to spend at least forty-five minutes to complete your character. Apply *Ben Nye's Quick Cleanse* for fast clean-up, followed with *Hydra Cleanse* or soap and water.

PREPARATION Clean face with *Hydra Cleanse* or soap and water before applying makeup. Use an astringent to remove excess oiliness. **Discontinue use if skin irritation occurs.** Parental supervision is required for use on children.

DIRECTIONS

1. Check Laceration: Pre-form *Nose & Scar Wax* into two elongated strips and set aside. Apply *Spirit Gum* to skin and tap lightly until adhesive becomes tacky. Press wax strips onto forehead and cheek as shown.

2. Blending/Cutting: Feather modeling wax edges with modeling tool or orange stick. Blend edges to skin using a small amount of *Quick Cleanse* or baby oil with a modeling tool or orange stick.

Cut through center of each wax strip. For a realistic effect, create uneven jagged edges. Apply *Liquid Latex* to seal wax sections to the face. Dry with a hair dryer set on low.

(about 1") ball. Apply adhesive to upper side of bridge and opposite side of nostril. Tap until tacky. Press medium-size ball onto upper area and smaller ball onto opposite lower nostril.

Blend edges with modeling tool. Press *Stipple Sponge* lightly into wax to create skin "texture". Apply latex to seal wax (see Step 2).

4. Highlight the Nose: If necessary, apply foundation to wax and surrounding skin, then powder. Apply *Ultralite* beginning at upper nose bump, curving over bridge to opposite nostril; blend. Texture with *Coral Pressed Rouge* with *Stipple Sponge*. Powder.

5. Black Eye: With a flat brush, apply *Steel Grey* around eye as shown. Extend shadow just below cheek bone to form an irregular circle (swollen area). Lightly add *Blood Red* over lid, beneath eye, and into *Steel Grey* coloring.

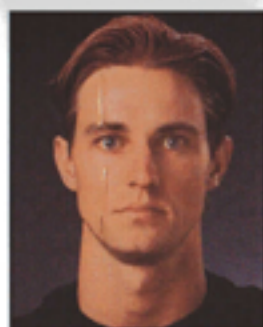
6. Creating the "Shiner": Apply *Yellow* within the "swollen" check contour, over frontal bone (beneath end of brow) and beneath lower eyelid. Stipple *Blood Red* over shiner for broken blood vessels. Powder.

7. Abrasion: Apply *Blood Red* to *Stipple Sponge* and scrape along skin for bruised and general "road rash" effect.

8. Deep Gash: Roll *Wax* into elongated "string" approximately 1/8" in diameter. Apply adhesive to form an uneven circle. Tap until tacky. Press *Wax* firmly into adhesive and blend edges to skin with *Quick Cleanse* or baby oil. Texture with clean *Stipple Sponge* and seal with *Liquid Latex*.

9. Gory Details: Apply *Yellow* unevenly to center of wound. Contour interior edges with *Steel Grey*. Stipple *Blood Red* across wound. Add *Thick Blood* for dramatic effects.

Set creme makeup with *Neutral Set Face Powder*. Intensify cuts and bruises with additional coloring as needed. Add *Stage Blood* or *Thick Blood* to wounds for greater realism. If desired, "black out" or distress teeth with *Tooth Colors*.



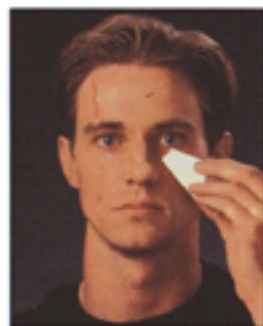
1



2



3



4



5



6



7



8



9