



**40V LITHIUM-ION CORDLESS
GRASS TRIMMER**

Model: E312D



Operations Manual

TABLE OF CONTENTS

• Symbols.....	2
• Safety Instructions.....	3
• Specifications.....	8
• Major Trimmer Parts.....	13
• Assembly & Operation.....	14
• Maintenance and Care.....	17
• Disposal Information.....	17
• Guarantee.....	18

SYMBOLS



General Safety Warnings.

1. After release the On/Off switch, the cutter bar continues running briefly. Risk of injury!
2. To protect against injury from the cutter blade, have a specialist garage perform all work such as replacing or regrinding the cutter blade (special tools required).
3. Before performing any maintenance and cleaning work on the garden tool, remove the battery.
4. Protect the battery contacts when the battery is not being used. Loose metal parts may short-circuit the contacts – Explosion and fire hazard!



Before using the tool, read the operating manual. Read all safety warnings and all instructions including the currently valid site rules and regulations for the prevention of accidents. Failure to follow the warnings and instructions may result in electric shock, fire and/or serious injury.



Do not throw batteries and other electrical products

into the household waste, fire, or water.



Recycle to protect the environment.



Do not expose to rain or wet conditions.



Protective goggles/visor, protective helmet & hearing protection.

Safety Instructions

WARNING: Read all safety warnings and all instructions.

Failure to follow the warning and instructions may result in electric shock, fire and/or serious injuries.

Save all warnings and instructions for future reference.

Before using the garden tool, read and follow:

- *These operating instructions,*
- *The user instructions of associated/supplied accessories (charger/battery),*
- *The currently valid site rules and regulations for the prevention of accidents.*

User

This garden tool is not intended for use by persons (including children) with reduced physical, sensory or mental capabilities, or lack of experience and knowledge, unless they have been given supervision or instruction concerning use of the machine by a person responsible for their safety.

Never allow children or people

unfamiliar with these instructions to use the garden tool. Supervise children. This will ensure that children do not play with the unit.

Intended Use

This garden tool is

- intended for trimming and cutting lawn edges and small grassy areas and lawns in the private sector,
- not suitable for trimming of bushes, hedges and shrubs,
- to use according to the descriptions and safety instructions indicated in this operating manual.

Any other use is not as intended. Improper use is not covered by the warranty and the manufacturer will reject any liability. The user is liable for all injuries to third parties and damage to their property.

Operate the unit only in the technical condition as stipulated and delivered by the manufacturer. Arbitrary changes to the unit will exclude the manufacturer from any liability for resulting injury and/or damage.



Preparation

1. Familiarize yourself with the unit and its functions as well as its controls.
2. Inspect the trimmer before switching it on and check for signs of wear and damage. Never use the grass trimmer with damaged or missing guards,
3. Have damage repaired by a qualified technician or the service center.
4. Do not use a unit which has a defective switch and can no longer be switched on or off.
5. When working with or on the unit, always wear sturdy footwear and long trousers. Do not operate the unit when barefoot or wearing sandals.
6. Check the terrain on which the unit will be used and remove any stones, sticks, wires, bones and other foreign objects, which could be picked up by the unit, to avoid endangering people.

During Operation

1. Do not switch on the unit if there are persons (particularly children) or animals in the immediate vicinity.
2. Ensure that children do not play with the unit.
3. Interrupt working if you notice that persons (particularly children) or pets are nearby.

4. Be particularly careful when changing direction. There is a risk of tripping!
5. Be particularly careful when trimming backwards or pulling the trimmer towards yourself.
6. Maintain a safe distance as provided by the handle frame.
7. Do not switch on the trimmer until your feet are at a safe distance from the trimmer head
8. Be careful and do not reach into the path of the trimmer line.
9. Never run over gravel while the trimmer is spinning. There is a risk of being hit by stones!
10. If possible, do not trim wet grass.
11. Do not work with the garden tool in a potentially explosive environment in which there are flammable liquids, gases or dust.
12. When interrupting work, never leave the unit unattended and keep it in a safe place.

For the Battery Charger

1. Do not place any objects on the battery charger and do not place the battery charger on soft surfaces.
2. Please read safety instructions for Li-ion batteries. There is a risk of explosion.

3. Liquid ejected from the battery may cause irritation or burns.

4. If other batteries are used, e.g. imitations, reconditioned batteries or third-party products, there is a risk of injuries as well as damage caused by exploding batteries.

5. A charger that is suitable for one type of battery pack may create a risk of fire when used with another battery pack. This may cause an internal short-circuit and the battery to burn, smoke, explode or overheat.

General Power Tool Safety Warnings



The term "power tool" in the warnings refers to your main-operated (corded) power tool or battery-operated (cordless) power tool.

Work Area Safety

1. Keep work area clean and well lit.

Cluttered or dark areas invite accidents.

2. Do not operate power tools in explosive atmospheres, such as in the presence of flammable liquids, gases, or dust. Power tools create sparks which may ignite the dust or

fumes.

3. Keep children and bystanders away while operating a power tool.

Distractions can cause you to lose control.

Electrical Safety

1. Power tool plugs must match the outlet. Never modify the plug in any way. Do not use any adapter plugs with earthed (grounded) power tools. Unmodified plugs and matching outlets will reduce the risk of electric shock.

2. Avoid body contact with earthed or grounded surfaces, such as pipes, radiators, ranges and refrigerators. There is an increased risk of electric shock if your body is earthed or grounded.

3. Do not expose power tools to rain or wet conditions. Water entering a power tool will increase the risk of electric shock.




Personal Safety

1. Stay alert, watch what you are doing and use common sense when operating a power tool. Do not use a power tool while you are tired or under the influence of drugs, alcohol, or medication. A moment of inattention while operating power

tools may result in serious personal injury.

2. Use personal protective equipment.

Always wear eye protection.

Protective equipment such as dust mask, non-skid safety shoes, hard hat, or hearing protection used for appropriate conditions will reduce the risk of injury. 

3. Prevent unintentional starting.

Ensure the switch is in the off-position before connecting to the power source and/or battery pack, picking up, or carrying the tool. Carrying power tools with your finger on the switch or power tools that have been turned on, invites accidents.

4. Remove any adjusting key or wrench before turning the power tool on. A wrench or a key left attached to a rotating part of the power tool may increase the risk of injury.

5. Do not overreach. Keep proper footing and balance at all times. This enables better control of the power tool in unexpected situations.

6. Dress properly. Do not wear loose clothing or jewelry. Keep your hair, clothing and gloves away from moving parts. Loose clothes, jewelry or long hair can be caught by moving parts.

7. If devices are provided for the connection of dust extraction and collection facilities, ensure that these are connected and properly used. Use of dust collection can reduce dust-related hazards.

Power Tool Use and Care

1. Do not force the power tool. Use the correct power tool for your application. The correct power tool will do the job better and safer at the rate for which it is designed.

2. Do not use the power tool if it can't be turned on and off by its switch. Any power tool that cannot be controlled with the switch is dangerous and must be repaired.

3. Disconnect the plug from the power source and/or the battery pack from the power tool before making any adjustments, changing accessories, or before storing the power tool. Such preventive safety measure reduces the risk of starting the power tool accidentally.

4. Store idle power tools out of reach of children and do not allow persons unfamiliar with the power tool or these instructions to operate it. Power tools are dangerous in the hands of untrained users.

5. Maintain the power tools. Check for misalignment or binding of moving parts, breakage of parts and any other condition that may affect the power tool's operation. If damaged, have the power tool repaired before use. Many accidents are caused by poorly maintained power tools.

6. Keep cutting tools sharp and clean. Properly maintained cutting tools with sharp cutting edges are less likely to bind and are easier to control.

7. Use the power tool, accessories and tool bits etc. in accordance with these instructions, taking into account the working conditions and the work to be performed. Use of the power tool for operations different from those intended could result in a hazardous situation.

Battery Tool Use and Care

1. Recharge only with the charger specified by the manufacturer. A charger that is suitable for one type of battery pack may create a risk of fire when used with another battery pack.

2. Use power tools only with specifically designated battery packs. Use of any other battery packs may create a risk of injury and fire.

3. When battery pack is not in use, keep it away from other metal objects

like paper clips, coins, keys, nails, screws, or other small metal objects that can make a connection from one terminal to another. Shorting the battery terminals together may cause burns or fire.

4. Under abusive conditions, liquid may be ejected from the battery; avoid contact. If you accidentally contact the battery liquid, flush it with water. If the battery liquid contacts the eyes, seek medical help as soon as possible. Liquid ejected from the battery may cause irritation or burns.

Service

Have your power tool serviced by a qualified repair professional using only the identical replacement parts. This will ensure that the safety of the power tool is maintained.

PRODUCT SPECIFICATIONS

Tool	Grass Trimmer
Model	EB310D
Rated Voltage	40V
No Load Speed	9000 rpm
Cutting Line Diameter	1.6mm
Cutting Swath Diameter	9.84"
Weight (w/o battery pack)	2.5kg (5.5lbs)
Guaranteed sound power level	96 dB(A)
Battery Pack	EB20 (2.0Ah)
Battery Charger	EBC05

Safety instructions for grass trimmer

General safety instructions

- To ensure your safety and for the safety of others, read this operating manual and its safety instructions before using the device. Please keep the operating manual and its safety instructions safe for subsequent use and always have them ready to hand.
- If the unit changes ownership, hand over the operating manual with this unit.
- Persons who operate the unit must not be under the influence of intoxicants (e.g. alcohol, drugs, or medication)
- Operate the unit only in the technical condition stipulated and delivered by the manufacturer. Unauthorized changes to the unit exclude liability of the manufacturer for any resulting damage and/or injury.
- Use the unit only in daylight or in good artificial lighting.
- Use the unit in dry condition only. Protect it from rain and moisture. The ingress of water into the unit increases the risk of an electric shock.

- Switch the unit off and remove the battery under the following conditions:
 - If the unit is left unattended;
 - Before checking, cleaning or performing other work on the unit;
 - If the unit starts vibrating excessively.

Before starting the unit

- Before starting work, familiarize yourself with the trimmer and its functions as well as its controls.
- Inspect the unit before switch it on and check for signs of wear and damage if it strikes an object.
- Do not use a unit which has a defective switch and can no longer be switched on or off
- Check that all nuts, bolts, and screws are tight to ensure the that unit can be operated safely.
- Never use a unit which has damaged or missing parts. Have them repaired or replaced by a qualified technician or service center.
- To reduce the risk of serious injury, never use wire or metal-reinforced line as cutting line.
- When working with or on the unit, always wear sturdy footwear, long trousers and the appropriate

personal protective equipment (goggles, hearing protection, non-slip protective gloves, etc.).

The wearing of personal protective equipment reduces the risk of injuries.

- Do not wear any jewelry or loose clothing which could be caught by the trimmer.

Keep long hair away from the intake openings.

- Check the terrain on which the unit will be used and remove any stones and pieces of wire, which could be picked up by the trimmer, to avoid endangering people.
- Before switching on the trimmer, remove adjusting tools and spanners. A tool or wrench, which is located in a rotating part of the unit, may cause injuries.

When using the unit

- Do not switch on the unit if there are persons (particularly children) or animals in the immediate vicinity. Ensure that children do not play with the unit.
- Interrupt working if you notice that persons (particularly children) or pets are nearby.
- Always keep hands and feet away from the rotating line, particularly

when you switch the grass trimmer on.

- To prevent injuries, always keep the trimmer parallel to the lawn when switching the motor on.
- While trimming, always maintain a safe distance and do not reach into the rotating line.
- Avoid an abnormal body posture. Ensure that you have a firm footing and always keep your balance. You can then better control the trimmer in unexpected situations and particularly on sloping areas.
- Do not work with the unit in a potentially explosive environment in which there are flammable liquids, gases, or dust. The unit may generate sparks which could ignite the dust or the vapors.
- Be particularly careful when walking backwards. There is a risk of tripping!
- Use the unit at walking pace only.
- When interrupting work, never leave the unattended and keep it in a safe place.

After using the unit

- Switch the unit off, remove the battery and then place the unit in a safe location.

- Do not keep the unit within the reach of children.
- Ensure that the ventilation slots in the unit are clean.
- Spare parts must conform with the requirements specified by the manufacturer. Therefore, use original spare parts only or spare parts authorized by the manufacturer. When replacing parts, please allow the supplied installation instructions and remove the battery beforehand.
- Have repairs carried out exclusively by a qualified technician or a service center.

Safety instructions for the battery charger

- Keep the battery charger away from rain or moisture. Penetration of water in the battery charger increases the risk of an electric shock.
- Keep the battery charger clean. Contamination can lead to danger of an electric shock.
- Before each use, check the battery charger, cable and plug. If damage is detected, do not use the battery charger. Never open the battery charger yourself. Have repairs performed only by a qualified technician and only

using original spare parts.

Damaged battery chargers, cables and plugs increase the risk of an electric shock.

- Do not place any objects on the battery charger and do not place the battery charger on the soft surfaces. There is a risk of fire.
- Always check that the main voltage matches the voltage indicated on the rating plate of the battery charger.
- Never use the charger if cable, plug, or the unit itself has been damaged by external influences. Take the charger to the nearest service center.
- Never open the battery charger. If the battery charger is defective, take it to a service center.

Safety instructions for Li-ion batteries

- Do not open the battery. There is a risk of a short-circuit.
- Protect the battery from heat, e.g. from continuous exposure to sunlight, fire, water, and humidity. There is a risk of explosion.
- In case of damage and improper use of the battery, vapors may be emitted. Ventilate the area and seek medical help in case of

complaints. The vapors can irritate the respiratory system.

- Under abusive conditions, liquid may be ejected from the battery; avoid contact. If contact accidentally occurs, flush with water. If liquid contact eyes, additionally seek medical help. Liquid ejected from the battery may cause irritation or burns.
- Use only original batteries with the voltage indicated on the rating plate of your electric power tool. If other batteries are used, e.g. imitations, reconditioned batteries or third-party products, there is a risk of injuries as well as damage caused by exploding batteries.
- The battery voltage must match the battery charging voltage of the battery charger. Otherwise, there is a risk of fire and explosion.
- Recharge only with the charger specified by the manufacturer. A charger that is suitable for one type battery pack may create a risk of fire when used with another battery pack.
- Pointed objects, such as nails or screwdrivers, or external forces may damage the battery. This may cause an internal short-circuit and the battery to burn, smoke, explode, or overheat.

Instruction for use

WARNING: Switch the unit off and remove the battery under the following conditions:

- If the unit is left unattended;
- Before checking, cleaning, or performing other work on the unit;
- If the unit starts vibrating excessively.

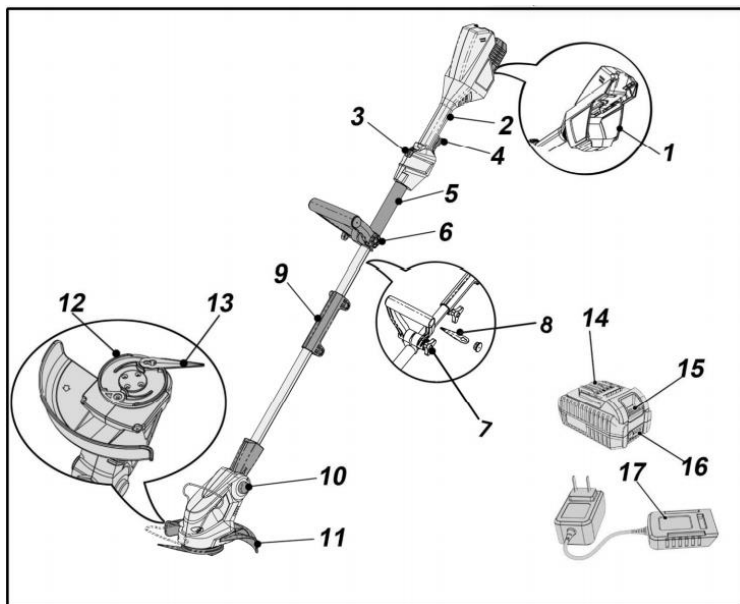
Before initial operation

Unpack the garden tool and accessories and check that no parts are missing or damaged.

NOTE: The batteries (optional; depending on delivery scope) are not fully charged on delivery. Prior to initial operation, charge the batteries fully.

See user manual of the battery charger.

MAJOR TRIMMER PARTS



- | | |
|-------------------------------|--------------------------------|
| 1. Insertion slot for battery | 10. Head rotation lock |
| 2. Handle | 11. Guard |
| 3. Switch interlock | 12. Blade socket |
| 4. On/Off switch | 13. Blade |
| 5. Foam pipe | 14. Battery (EB20) |
| 6. Handlebar | 15. Battery release button |
| 7. Handlebar knob | 16. LED charge state indicator |
| 8. Spare blades | 17. Charger (EBC05) |
| 9. Shaft conjunction | |

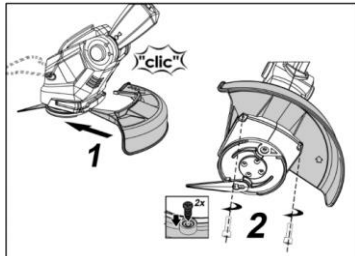
Assembly

WARNING: Before performing any work on the garden tool, remove the battery.

Installing the guard

CAUTION: Never operate the trimmer with missing or broken guard or without guard in position.

- Loosen and remove the screws from the underside of motor housing.
- Place the guard on the motor housing (1) and align the holes vertically.
- Screw in the screws and tighten them (2).

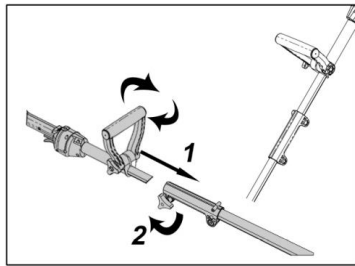


Split shaft assembly

Adjust the trimmer length to the height of the user.

- Insert the shafts together as illustrated (1).

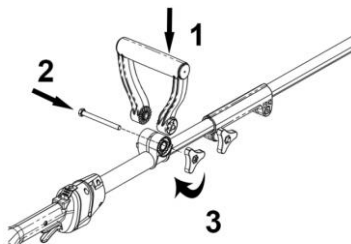
- Tighten the knob (2).



Attach the handlebar

Attach the handlebar at the end of the foam tube.

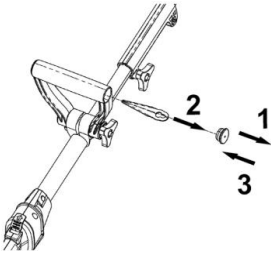
- Loosen the locking lever on the handlebar (1).
- Set the handlebar to the required position (2).
- Secure the handlebar by folding down the locking lever.



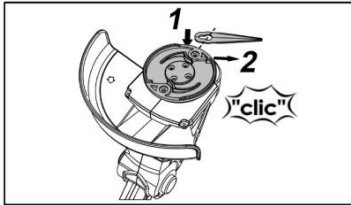
Attach blades

- Remove the rubber cap from handle bar (1).

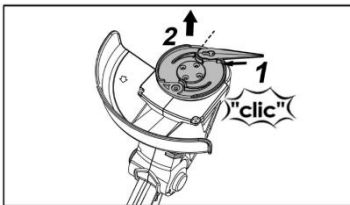
- Pick 2 replacement blades (2)



- Insert the blade onto both slots on the underside of the cutting head as illustrated.



- To replace the blades, as illustrated, please rotate the blade and push inwards, then lift off the locating knob. To install the new blades please reverse the process and ensure they are pushed firmly into place.

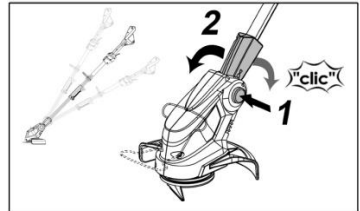


Set the operating angle

Five operating angles can be adjusted on the lawn trimmer. This allows you to easily reach places in the garden which are problematic and difficult to access.

The cutting head should always be parallel to the ground.

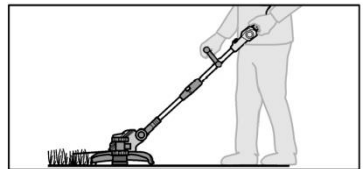
- Press the locking button (1)
- Set the required operating angle (2).
- Release the locking button.



Operating mode

Clearance cutting

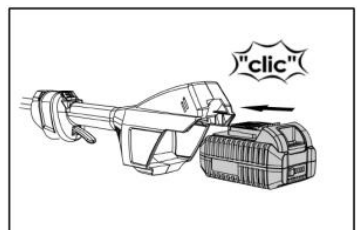
The cutting head is guided parallel to



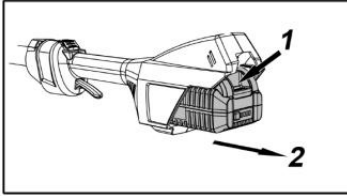
the ground. When clearance cutting, guide the trimmer in a semi-circle in front of your body.

Inserting/replacing the battery

- Charging the battery as described in the user manual of the charger.
- Press the charged battery into the power tool until it clicks into place.



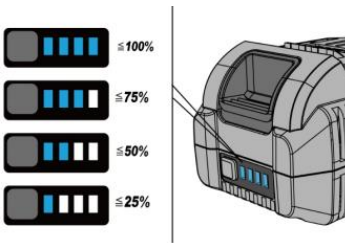
- To remove, press the release button (1) and pull out the battery (2).



CAUTION: *Protect the battery contacts when the battery is not being used. Loose metal parts may short-circuit the contact. **Explosion and fire hazard!***

Battery state of charge

- Press the button to check the state of charge at the state of charge indicator LED.

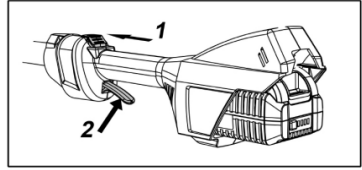


The indicator goes out after 3 seconds. If the LED lights red, the battery must be recharged. If the LED not lights up after the button is pressed, the battery is faulty and must be replaced.

Switching on

- First press and hold the switch interlock (1).

- Then pull the On/Off switch (2)



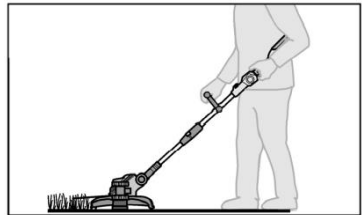
Switching off

CAUTION: Rotating blade! Note that the blade continues running softly when the trimmer has been switched off.

- Release the On/Off switch.

Work instructions

- Attach the shoulder belt to the unit. Pull the shoulder belt over your head.
- Hold the unit with both hands: one hand on the rear handle, the other hand on the handlebar.



- Keep the cutting attachment parallel to the ground and make sweeping movements from side to side.
- Walk slowly forwards.
- Use only the tip of the line for cutting, especially along walls. If more than the tip is used for cutting, the cutting capacity is

reduced and the engine may overload.

- Cut grass which is taller than 20cm from the top down in small stages to prevent premature wear of the line and engine resistance.
- Cut dry grass weeds only.
- The trim line may break by:
 - Becoming entangled with foreign objects,
 - Normal material fatigue,
 - Attempting to cut thick-stalked weeds,
 - Striking walls, garden fences, etc.

Maintenance and Care

WARNING: Before performing any work on the garden tool, remove the battery.

Cleaning

WARNING: Do not use water or liquid detergents.

- Remove dirt and dust from the housing with a paintbrush and dry cloth.
- Remove grass clippings from the underside of the trimmer.
- Keep the ventilation slots clean and free of dust.

Storage

- Store the unit in a dry and soft and frost-free place (10-25°C).

- Store the battery and the unit separately.
- Charge the battery before storing the unit in winter.
- Keep the unit, in particular its plastic components, away from brake fluids, petrol, petroleum products, penetrating oil, etc. They contain chemical substances which may damage, attack or destroy the plastic components of the unit.
- Fertilizers and other garden chemicals contain substances which may have a highly corrosive parts of the unit. Therefore, do not store your unit near these substances.

Repairs

Check the unit for damage. Repairs may be carried out by an authorized customer service center only.

Disposal information

WARNING: Render redundant garden tools unusable:

- Mains operated tool by removing the power cord,
- Battery-operated tool by removing the battery.

EU countries only:

Do not throw electric power tools into the household waste! In accordance

with the European Directive 2012/19/EC on Waste Electrical and Electronic Equipment and transposition into national law used electric power tools must be collected separately and recycled in an environmentally-friendly manner.

Guarantee

This product has been manufactured to the highest standards. When a new product is purchased, it is guaranteed a 24-month (grass trimmer) and 12-month (battery) manufacturer's warranty which comes into force on the date the product was purchased.

The guarantee covers only defects which can be attributed to a material and/or production fault as well as non-performance of warranted characteristics.

When making a claim under the guarantee, enclose the original sales receipt with purchase date. Repairs under the guarantee may be carried out only by workshops or service centers authorized by the manufacturer.

A claim may be made under the guarantee only if the power tool has been used as intended.

This warranty is invalid where defects are caused by or result from:

- Misuse, abuse, or neglect;
- Commercial use (industry, craft, rental)
- Repairs attempted by unauthorized repair center
- Damage caused by external effects, foreign objects, substances or accidents.