

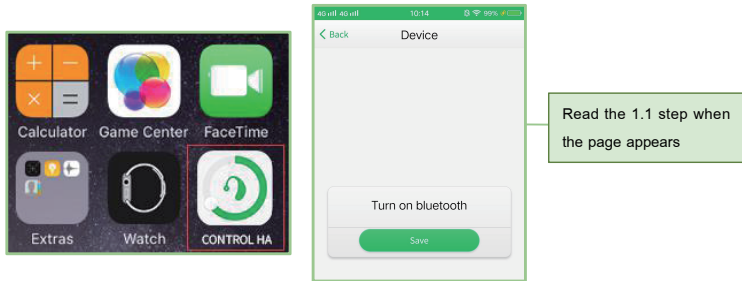
APP Instruction Manual

1. Connect App to the Mobile phone (IOS & Android)

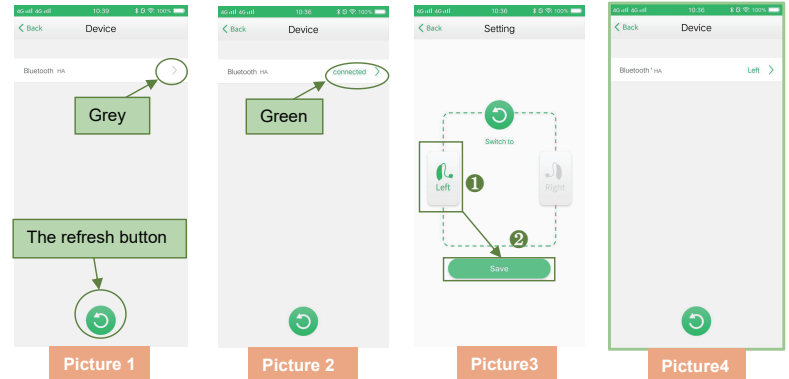
1.1 Click the Icon Setting and open the Bluetooth as the following picture



1.2 Click the Control enter into the APP searching interface



1.3 APP searching interface



1.3.1. Search and find out the Bluetooth, then click Bluetooth HA and connect them, like Picture 1

Note: The circle above the right corner

→If the circle appears to grey then it proves that the Bluetooth device has not connected to the APP, like Picture 1

→If the circle appears to red then it proves that the Bluetooth device has connected to the APP, like Picture 2

1.3.2. Click to the connected Bluetooth HA, then enter into Setting interface, like Picture 3

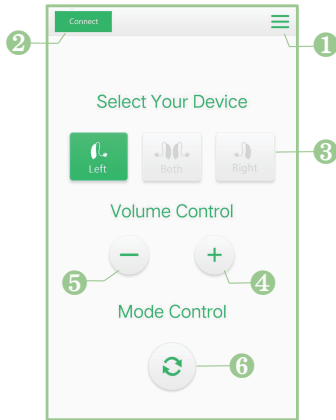
1.3.3. Choose left ear device or right ear device then Click the button Save, as picture 3 and picture 4 shows

For example: Click Left Icon it turns green color and, Click Icon Save. Then complete the Left ear setting, like Picture 3

1.3.4. Click Back enter into 2.1 (APP main menu)

2. APP Operation

2.1 APP main menu



Picture 5

- 1 Menu
- 2 Searching
- 3 Left / Both / Right optional control interface
- 4 Volume up
- 5 Volume down
- 6 Programs switch button

2.1.1 Click the top left corner then enter into 1.3 (APP searching interface)

2.1.2 Click the top right corner then enter into 2.2 (Menu)

2.1.3 Left/Both/Right optional control interface

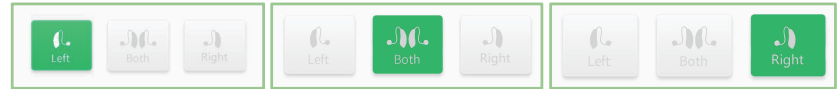
→Click Left appears to green then control Left ear piece hearing aid, look picture 6

→Click Both appears to green then control both Left & Right ear pieces hearing aid, look picture 7

→Click Right appears to green then control both Right ear piece hearing aid, look picture 8

2.1.4 Click + and – buttons and adjust the volume, look picture 5

2.1.5 Click program switch button then switch to the next program, look picture 5



Picture 6

Picture 7

Picture 8

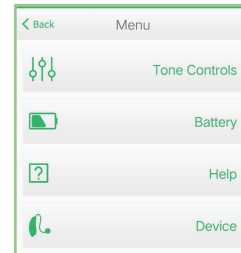
2.2 Menu interface

2.2.1 Click the button Trimming then enter into 2.3(Trimming interface)

2.2.2 Click the button Battery then enter into 2.4(Battery interface)

2.2.3 Click the button Help then enter into 2.5(Help interface)

2.2.4 Click the button Back then enter into 2.1(APP main menu)



Picture 9

2.3 Trimming interface

2.3.1 Left/Both/Right optional control interface

→Click Left appears to green then control Left ear piece hearing aid, look picture 6

→Click Both appears to green then control both Left & Right ear pieces hearing aid, look picture 7

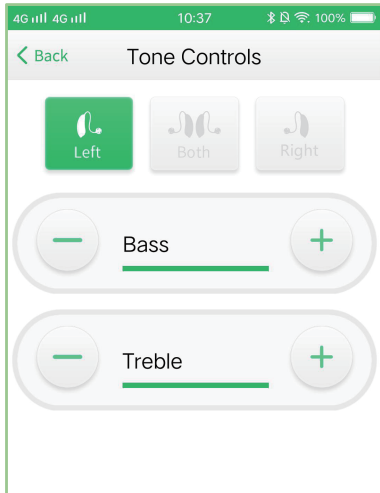
→Click Right appears to green then control both Right ear piece hearing aid, look picture 8

2.3.2 adjust the Bass, Click + and – buttons

2.3.3 adjust the Treble, Click + and – buttons

2.3.4 adjust the MPO, Click + and – buttons

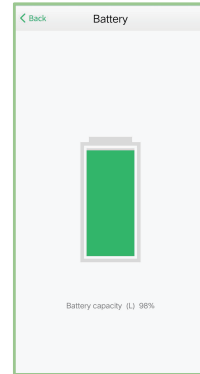
2.3.5 adjust the Comfort, Click + and – buttons



Picture 10

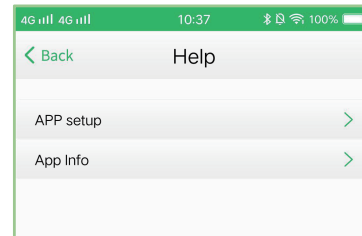
2.4 Battery interface

2.4.1 Picture shows the left ear piece has 20% remaining battery capacity



Picture 11

2.5 Help interface



Picture 12

APP Instruction Manual

APP info