

⚠ Important Notes

- Do **NOT** open the device. Opening causes permanent damage and voids the warranty.
- Do **NOT** stare directly into the apertures of the laser.

Description

- ① **On/Off Button** – press to turn laser measure on, hold to turn off
- ② **BLE On/Off Button** – press to turn Bluetooth on/off on laser measure
- ③ **Setting Button** – press to enter laser setting



Included in the box

- Laser Measure 1X
- Fabric Pouch 1X
- User Guide 1X

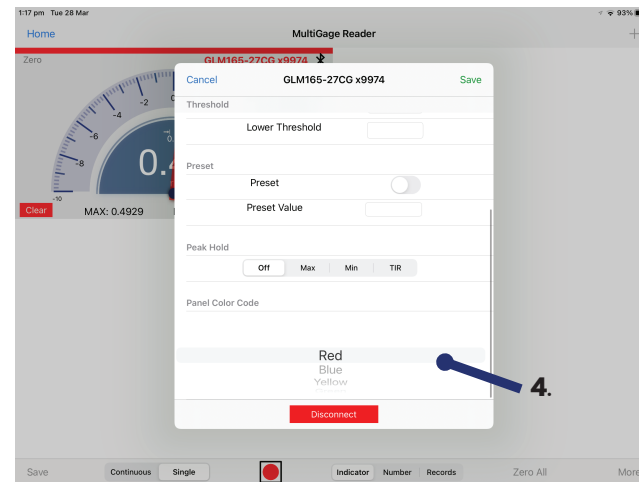
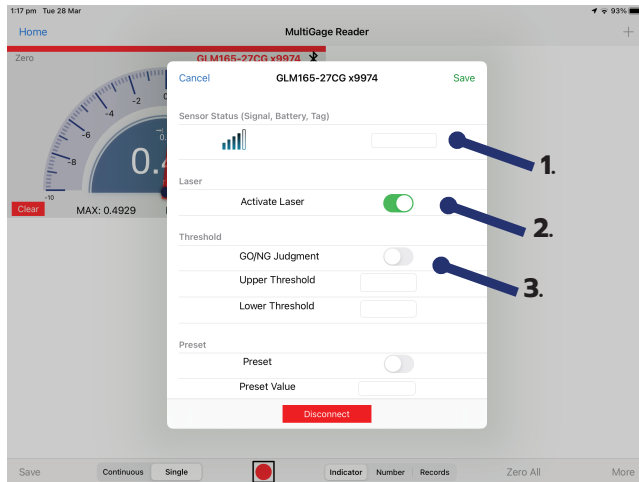
Compatible Software

- iOS: MultiGage Reader
- Android: MultiGage Reader
- Windows: MultiGage Reader (BLE Dongle Required)
- iOS app can be directly downloaded from the App Store for FREE.
- Android app can be directly downloaded from the Google Play Store for FREE.
- Windows software is available at motionics.com/download.

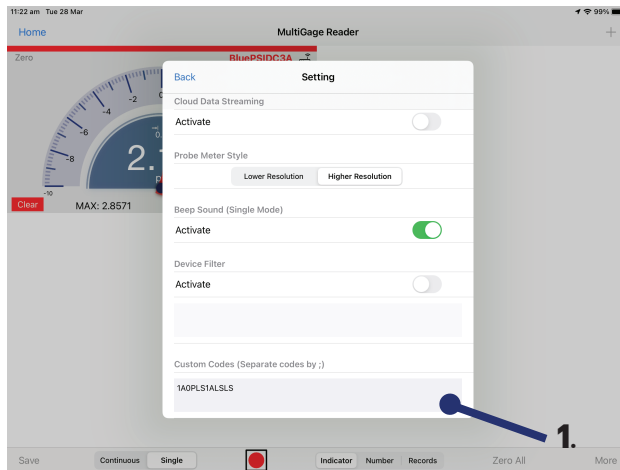
Quick Start

- Insert 2x batteries into laser measure for a first-time use.
- Turn on laser measure and Bluetooth.
- Plug in USB Bluetooth dongle if using Windows PC.
- Run software (refer to compatible software section for download, and launch).
- For a first-time use, device activation is required using code printed on device.
 - On iOS, go to New Measurement>More>Setting, and enter activation code into Custom Codes field.
 - On Android, go to Menu>Settings, enter activation code into Custom Codes field and press Save.
 - On Windows, go to Settings>Activation>Custom Activation Codes, enter activation code, press Add Code then Save.
- Tap Pair button in software to enter pairing page.
- Wait for the software to finish scanning nearby devices, then select "**Bosch GLM50C xXXXX**" / "**GLM165 - 27C(G) xXXXX**" to connect.
- Connection may take a few seconds. Once paired, readings show in software.
- To turn on/off laser, do the following:
 - On iOS/Android, tap device name, toggle **Activate Laser** switch and press Save.
 - On Windows, go to Gages, tap setting icon of laser measure, toggle laser switch.

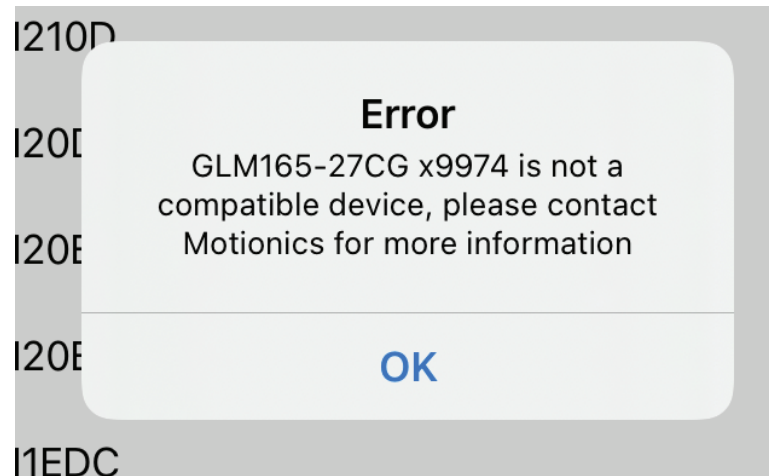
Wireless Laser Settings



- 1. Device Name** - Device name is listed and can be edited (only saved to iPad edited on)
- 2. Activate Laser** - Enable and disable laser remotely
- 3. Threshold** - Enable and disable threshold & enter upper and lower threshold limits
- 4. Panel Colour** - Change colour of panel



- 1. Custom Codes** - Enter custom device code found on Laser to allow connection with device



Trouble Shooting

If error is shown (as seen in image above), make sure activation code is entered exactly the same as found on device. (Case sensitive)

Contact Information

Phone: 02 4017 0198

Email: sales@livetest.com.au

Website: <https://livetest.com.au/>