



2023 LIVETEST FULL PRODUCT CATALOGUE



Bluetooth®

LIVETEST
 GET OUT OF THE LINE OF FIRE
www.livetest.com.au

02 4017 0198
sales@livetest.com.au
 115 Young St Carrington NSW 2294

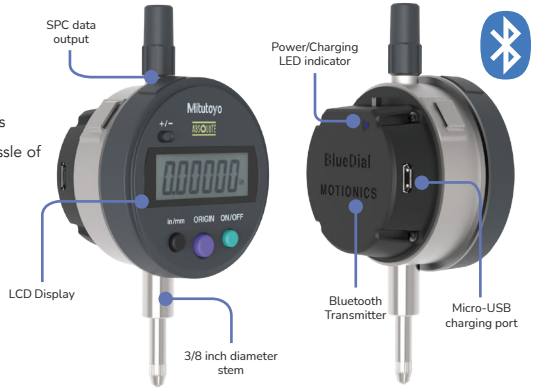
BlueDial

Bluetooth Dial Indicator

BlueDial is a Mitutoyo indicator with an integrated Bluetooth transmitter on the back. Not only does BlueDial maintain high-accuracy measurement from Mitutoyo, but it also brings the convenience of wireless communication. It's a new solution to get rid of the hassle of wires/cables and improves efficiency and safety in deflection measurement applications.

Features:

- Integrated Bluetooth Low Energy technology
- Multiple platform support (iOS, Android, PC and LabVIEW)
- Continuous and single mode data recording
- Rechargeable battery (60-hour life with a single charge)
- Multiple-device connectivity
- Remote cloud monitoring with MultiGage Cloud**



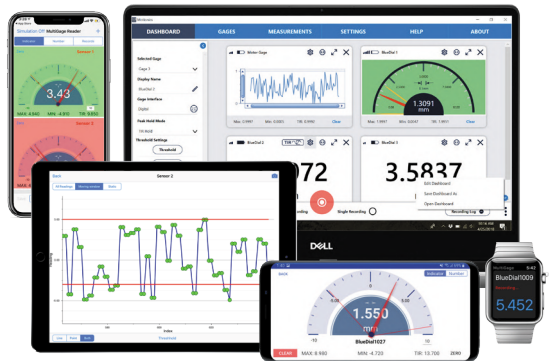
Model	BD10-783	BD10-793
Measurement Range	.5 in/12.7 mm	
Resolution	0.0005 in/0.01 mm	0.0001 in/0.001 mm
Accuracy	0.0008 in	0.00012 in
Wireless Data Rate	10 Hz	
Transmission Range	20 m (indoors)/30 m (outdoors)	
Working Temperature	0 - 50°C	
Rechargeable Battery	400 mAh	
Battery Life	60 hrs	
Charging	5 VDC USB	

More Features with FREE MultiGage Software*

- Simultaneous reading of multiple devices
- Data plotting on iPhone/iPad/Android
- Continuous or single data point recording
- Max, Min, TIR measurement
- Remote zeroing from the app
- GO/NG judgment with green/red color indication
- Custom formula calculator
- Large analog probe meter with adjustable range
- Data saving in local database
- Data export in CSV via email and cloud drives
- Keyboard entry to Excel or SPC software on PC
- Apple Watch support

**MultiGage Cloud

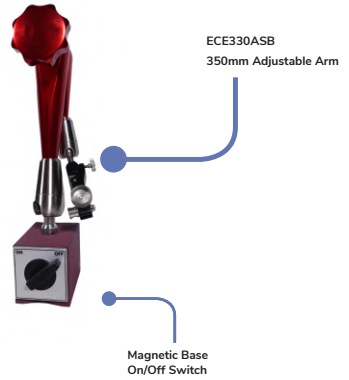
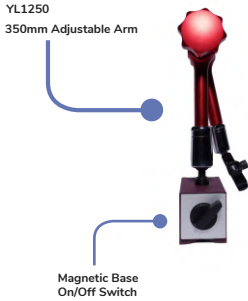
Users can view and record readings from anywhere with our browser-based remote monitoring platform, MultiGage Cloud. Create custom dashboards, set alerts, receive notifications, and record readings remotely by connecting gauges wirelessly to our Cloud gateway. Connect up to an unlimited amount of sensors at once. MultiGage Cloud is a paid platform.



*Availability of features varies between apps/platforms.

YL1250 / YL1250L

Magnetic Base



YL1250	ECE330ASB
Holding Power: 100kg	Holding Power: 190kg
Arm Length 350mm	Arm Length 350mm
Net Weight 2kg	Net Weight 1kg
Tapped Hole M8 x 1.25	

Features of FREE MultiGage Software*

- Simultaneous reading of multiple devices
- Data plotting on iPhone/iPad/Android
- Continuous or single data point recording
- Max, Min, TIR measurement
- Remote zeroing from the app
- GO/NG judgment with green/red color indication
- Custom formula calculator
- Large analog probe meter with adjustable range
- Data saving in local database
- Data export in CSV via email and cloud drives
- Keyboard entry to Excel or SPC software on PC
- Apple Watch support

**MultiGage Cloud

Users can view and record readings from anywhere with our browser-based remote monitoring platform, MultiGage Cloud. Create custom dashboards, set alerts, receive notifications, and record readings remotely by connecting gauges wirelessly to our Cloud gateway. Connect up to an unlimited amount of sensors at once. MultiGage Cloud is a paid platform.



*Availability of features varies between apps/platforms.

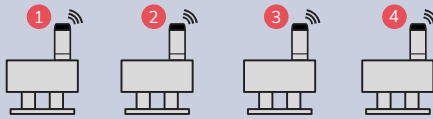
BluePSI

Bluetooth Pressure Sensor

BluePSI is a wireless pressure sensor used for measurement of liquid or gas pressure, as well as temperature measurement. These Bluetooth-enabled pressure sensors, with the help of our free software, allow you to continuously monitor pressure in multiple locations simultaneously on your iOS, Android, or Windows device. Along with streaming real-time readings, some models log data internally. BluePSI has high resolution (24-bit ADC), high accuracy ($\pm 0.25\%$ FS), a long battery life (up to 2 years with a coin battery) and is IP67 rated for high resistance to water and dust exposure. Most importantly, it eliminates the need for hard wiring and manual data logging thanks to its Bluetooth 4.0 wireless connectivity. With our app/software on iOS/Android smart devices and Windows PCs, users can continuously monitor pressure conditions at multiple locations at once.



- Bluetooth Low Energy
- Long battery life
- IP Rating IP67
- Replacable coin battery
- Temperature sensor
- Onboard data logger
- Multi-platform software capability
- Multi-gage capability
- Continuous recording and plotting
- Data saving
- Remote cloud monitoring**



Pressure readings from multiple BluePSI sensors are transmitted to a PC or smart device simultaneously via Bluetooth Low Energy.



BluePSI	BPXXX	BP2-XXX-01	BP2-XXX-02
Pressure Msmt Range	30-15,000 psi	100-10,000 psi	
Pressure Accuracy	$\pm 0.25\%$ FS		
Proof Pressure	2x msmt range (20,000 psi max)		
Burst Pressure	5x msmt range (20,000 psi max)		
Temperature Msmt Range	N/A	0-55°C	
Temperature Accuracy	N/A	$\pm 3^\circ\text{C}$	
Transmission Range	Up to 20 m		
Wireless Data Rate	5 sec/sample (adjustable up to 10 samples/sec*)		
Weather Proof	IP67		
Working Temperature	-20 - 85 °C		
Battery Life	2 years at 5 second interval w/CR2050		
Battery Type	CR2050/CR2032		
Pressure Port	1/4-18NPT (1/4-19BSPT for bar models)		
Data Logging	No	Yes	
Real-Time Readings	Yes		

* Higher data rate could reduce battery life

More Features with FREE MultiGage Software*

- Simultaneous reading of multiple devices
- Data plotting on iPhone/iPad/Android
- Continuous or single data point recording
- Max, Min, TIR measurement
- Remote zeroing from the app
- GO/NG judgment with green/red color indication
- Custom formula calculator
- Large analog probe meter with adjustable range
- Data saving in local database
- Data export in CSV via email and cloud drives
- Keyboard entry to Excel or SPC software on PC
- Apple Watch support

**MultiGage Cloud

Users can view and record readings from anywhere with our browser-based remote monitoring platform, MultiGage Cloud. Create custom dashboards, set alerts, receive notifications, and record readings remotely by connecting gauges wirelessly to our Cloud gateway. Connect up to an unlimited amount of sensors at once. MultiGage Cloud is a paid platform.



**Availability of features varies between apps/platforms.

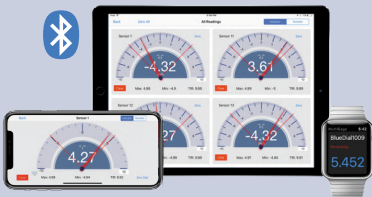
BlueTak

Bluetooth Tachometer

BlueTak is a Bluetooth digital tachometer that allows users to view and record readings remotely from their iOS, Android, or PC device wirelessly using Motionics' free software, MultiGage. You can connect to multiple instruments and instrument types simultaneously, and eliminate human error and improve safety through wireless measurement.



BlueTak works with MultiGage, our free cross-platform software that lets you read and record measurements wirelessly on your iPad, iPhone, Android device, or Windows PC.



BlueTak	Contact	Non-contact
Measurement Range	0.8-25,000rpm	6-99,999rpm
Resolution	1 RPM	0-9,999: 0.1 RPM 10,000+: 1 RPM
Accuracy	±0.006% of reading ± 1 least significant digit	
Wireless Data Rate	2 Hz	
Transmission Range	20 m	
Working Temperature	-10 - 45 °C	
Battery	2x AA	

More Features with FREE MultiGage Software*

- Simultaneous reading of multiple devices
- Data plotting on iPhone/iPad/Android
- Continuous or single data point recording
- Max, Min, TIR measurement
- Remote zeroing from the app
- GO/NG judgment with green/red color indication
- Custom formula calculator
- Large analog probe meter with adjustable range
- Data saving in local database
- Data export in CSV via email and cloud drives
- Keyboard entry to Excel or SPC software on PC
- Apple Watch support

**MultiGage Cloud

Users can view and record readings from anywhere with our browser-based remote monitoring platform, MultiGage Cloud. Create custom dashboards, set alerts, receive notifications, and record readings remotely by connecting gauges wirelessly to our Cloud gateway. Connect up to an unlimited amount of sensors at once. MultiGage Cloud is a paid platform.



**Availability of features varies between apps/platforms.

Bosch GLM50 / GLM165

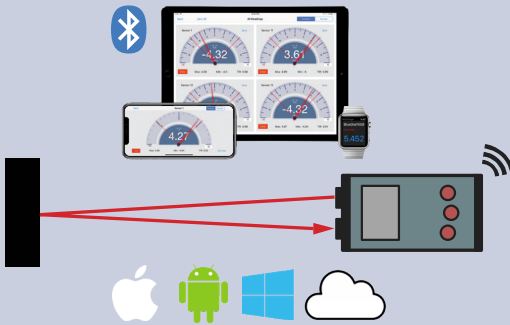
Wireless Laser Measure

LIVETEST
GET OUT OF THE LINE OF FIRE
www.livetest.com.au

Bosch GLM50 / GLM165 are a compact pocket size yet highly accurate laser distance measure. It measures distances from up to 165 feet to within 1/8 inch. Thanks to its built-in Bluetooth Low Energy technology, laser measurement readings can be easily picked up wirelessly in Motionics apps/software on iPhone, iPad, Android, and Windows PC. When working together with other measurement devices in applications such as Benkelman tests, GLM50 provides accurate coordinate reference and greatly facilitates the test process.

Features

- Long-range and high-accuracy measurement
- Continuous laser reading
- Bluetooth Low Energy Technology
- Data recording, storage, and graphing capabilities
- Multiple platform support (iOS, Android, PC)



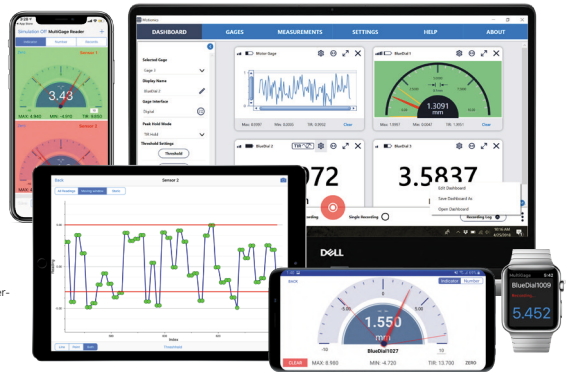
Laser Measure	Specification
Measurement Range	6 in - 165 ft/0.15 - 50 m
Resolution	± 1/32 in/0.5 mm
Accuracy	± 1/16 in/1.5 mm
Wireless Data Rate	2 Hz
Transmission Range	20 m
Dimensions	4.2 x 1.8 x 0.9 in
Working Temperature	-10 - 45 °C
Battery	2x AAA

More Features with FREE MultiGage Software*

- Simultaneous reading of multiple devices
- Data plotting on iPhone/iPad/Android
- Continuous or single data point recording
- Max, Min, TIR measurement
- Remote zeroing from the app
- GO/NG judgment with green/red color indicator
- Custom formula calculator
- Large analog probe meter with adjustable range
- Data saving in local database
- Data export in CSV via email and cloud drives
- Keyboard entry to Excel or SPC software on PC
- Apple Watch support

**MultiGage Cloud

Users can view and record readings from anywhere with our browser-based remote monitoring platform, MultiGage Cloud. Create custom dashboards, set alerts, receive notifications, and record readings remotely by connecting gauges wirelessly to our Cloud gateway. Connect up to an unlimited amount of sensors at once. MultiGage Cloud is a paid platform.



*Availability of features varies between apps/platforms.

GageHub Local

Bluetooth WiFi Router

Motionics GageHub Local is a BLE and WiFi router that can be used alongside Motionics Bluetooth measurement devices to extend their wireless transmission range.

GageHub Local connects to Motionics measurement devices via Bluetooth Low Energy and transmits data sent to the router as WiFi signals that are then sent to your iPhone or iPad. The wireless transmission range of the device is hence extended from the typical BLE transmission range of 30-50 feet to the WiFi transmission range of 100 ft, and can be further extended by adding standard off-the-shelf WiFi repeaters or range extenders.

GageHub Local doesn't change the way gages interact with the MultiGage app, just adding an option to add a device via WiFi when pairing devices, and allowing multiple smart devices to connect to the same gage and receive data simultaneously. The hub can connect to up to 40 gages, sensors, and transducers and an unlimited number of smart devices. GageHub Local also adds one more layer of data security with a password-protected WiFi connection.

The router is powered by a 5V microUSB connection that can connect to power outlets, portable power banks, and other sources of continuous power.



Multiple devices can view one gage



5V MicroUSB connection



Password-protected WiFi connection



Limitless amount of smart devices



Can connect to up to 40 sensors

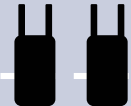
BLE Gages



GageHub Local Router



WiFi Extenders (optional)



BluePot

Wireless Bluetooth String BluePot

BluePot is a cable actuated position sensor with integrated Bluetooth transmitter at the back. It integrates a high-accuracy position sensor with Bluetooth Low Energy data transmitter. All the readings from one or multiple BluePots will be wirelessly collected and displayed on a smart device or PC.

Features:

- Integrated Bluetooth Low Energy technology
- Multiple platform support (iOS, Android, PC)
- Continuous and single data recording
- Rechargeable battery (60-hour life with a single charge)
- Multiple-device connectivity



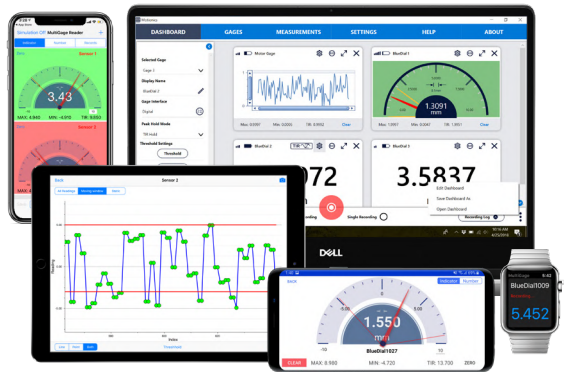
Model	BPT-SP-4	BPT-SP-12	BPT-SP-25	BPT-SP-50
Measurement Range	4.75 in / 120mm	12.5 in / 317mm	25 in / 635mm	50in / 1270mm
Accuracy	±1%	±0.25%	±0.25%	±0.25%
Max Acceleration	15g			
Repeatability	±0.05%			
Wireless Data Rate	10Hz			
Transmission Range	20m (indoors) / 30m (outdoors)			
Battery life	60hrs			
Working temprature	-18°C - 50°C			
Charging	5 VDC USB			

More Features with FREE MultiGage Software*

- Simultaneous reading of multiple devices
- Data plotting on iPhone/iPad/Android
- Continuous or single data point recording
- Max, Min, TIR measurement
- Remote zeroing from the app
- GO/NG judgment with green/red color indication
- Custom formula calculator
- Large analog probe meter with adjustable range
- Data saving in local database
- Data export in CSV via email and cloud drives
- Keyboard entry to Excel or SPC software on PC
- Apple Watch support

**MultiGage Cloud

Users can view and record readings from anywhere with our browser-based remote monitoring platform, MultiGage Cloud. Create custom dashboards, set alerts, receive notifications, and record readings remotely by connecting gauges wirelessly to our Cloud gateway. Connect up to an unlimited amount of sensors at once. MultiGage Cloud is a paid platform.



*Availability of features varies between apps/platforms.

BPRO

Bluetooth Digital Protractor

Motionics BPRO Bluetooth Digital Protractor is an economic digital protractor with built-in Bluetooth Low Energy technology. It covers a whole 360° (4x90°) range with 0.05° resolution and 0.2° accuracy. Thanks to its wireless data transmission feature, protractor readings can be easily read out in real time on the screen of a smartphone/tablet/Windows PC remotely and from any angle.

BPRO comes in two form factors, as a cube or as a torpedo level, for different applications. Strong magnets on the solid military grade alloy body allow the user to easily attach the protractor to any steel surface for measurement.

Features

- 360° (4x90°) reading range
- Bluetooth Low Energy Technology
- Multiple platform support (iOS, Android, PC)
- Large reading on smart device/PC screen, no more viewing angle issues
- Rechargeable battery



Bluetooth Low Energy



Rechargeable



Full 360° measurement



Multi-gage capability



Continuous recording and plotting



Data saving



Remote cloud monitoring**



Angle Sensor	BPRO-S	BPRO-L
Measurement Range	360° (90° x 4)	
Resolution	0.05°	
Accuracy	0.2°	
Repeatability	0.1°	
Wireless Data Rate	10 Hz	
Transmission Range	20 m (indoors)/30 m (outdoors)	
Dimensions	2.13 x 2.13 x 0.91 in	6 x 2.4 x 1.2 in
Working Temperature	0-50°C	
Battery	400 mAh	
Battery Life	30 hrs	
Charging	5 VDC USB	

More Features with FREE MultiGage Software*

- Simultaneous reading of multiple devices
- Data plotting on iPhone/iPad/Android
- Continuous or single data point recording
- Max, Min, TIR measurement
- Remote zeroing from the app
- GO/NG judgment with green/red color indicator
- Custom formula calculator
- Large analog probe meter with adjustable range
- Data saving in local database
- Data export in CSV via email and cloud drives
- Keyboard entry to Excel or SPC software on PC
- Apple Watch support

**MultiGage Cloud

Users can view and record readings from anywhere with our browser-based remote monitoring platform, MultiGage Cloud. Create custom dashboards, set alerts, receive notifications, and record readings remotely by connecting gauges wirelessly to our Cloud gateway. Connect up to an unlimited amount of sensors at once. MultiGage Cloud is a paid platform.



*Availability of features varies between apps/platforms.

Wireless 2-Axis Precision Digital Level



Digi-Pas DWL-1500XY is a Bluetooth enabled dual-axis precision digital level. Its high resolution (0.001°) and high accuracy ($\pm 0.002^\circ$ for 0 to $\pm 0.5^\circ$ and $\pm 0.004^\circ$ for other angles) measuring capability qualifies it for majority of entry level industrial applications. Additionally with its built-in Bluetooth Low Energy feature, user can easily read and capture leveling readings on the screen of an iOS/Android smart device or a Windows PC while adjusting machine's orientation.



Features

- High resolution & high accuracy measurement
- Bluetooth Low Energy Technology
- Multiple platform support (iOS, Android, PC)
- Real-time and continuous reading



Bluetooth Low Energy



Multi-platform software capability



Multi-gage capability



Continuous recording and plotting



Data saving



Remote cloud monitoring**



DigiPas Level	Specification
Measurement Range	$0 - \pm 2^\circ$
Resolution	0.001°
Accuracy	$\pm 0.002^\circ$ ($0-0.5^\circ$) $\pm 0.004^\circ$ (other angles)
Measurement Speed	≤ 5 sec
Transmission Range	15 m
Dimensions	6 x 2 x 1.5 in
Working Temperature	$-10 - 50^\circ\text{C}$
Battery	2x AA

More Features with FREE MultiGage Software*

- Simultaneous reading of multiple devices
- Data plotting on iPhone/iPad/Android
- Continuous or single data point recording
- Max, Min, TIR measurement
- Remote zeroing from the app
- GO/NG judgment with green/red color indicator
- Custom formula calculator
- Large analog probe meter with adjustable range
- Data saving in local database
- Data export in CSV via email and cloud drives
- Keyboard entry to Excel or SPC software on PC
- Apple Watch support

**MultiGage Cloud

Users can view and record readings from anywhere with our browser-based remote monitoring platform, MultiGage Cloud. Create custom dashboards, set alerts, receive notifications, and record readings remotely by connecting gauges wirelessly to our Cloud gateway. Connect up to an unlimited amount of sensors at once. MultiGage Cloud is a paid platform.



Availability of features varies between apps/platforms.

Wireless Load Gauge

Motionics' wireless force gauge combines a high-strength industrial force gauge with the safety and convenience of Bluetooth Low Energy technology.

You can connect this gauge to your iOS, Android, or PC device with our free software, MultiGage, and read and record measurements remotely. This takes you out of hazardous, hard-to-reach locations when taking force measurements.

Our wide range of models allows for use in variety of force measurement applications (tension load cells, compression load cells, and dynamometers) and resolution, accuracy, and capacity requirements. With a heavy-duty, IP67-rated outer shell and an incredibly high weight-to-strength ratio, this force gauge is suitable for even the harshest environments.



- 
Bluetooth Low Energy
- 
Long battery life
- 
Multi-platform software capability
- 
Multi-gauge capability
- 
Continuous recording and plotting
- 
Data saving
- 
Remote cloud monitoring**



	WLG-D1	WLG-C1	WLG-T1
Capacity	6.5te/14,300lb	5-1,000te (depends on model)	1000kg-500te (depends on model)
Resolution	0.001te/2lb	0.001-0.5te (depends on model)	0.5kg-0.1te (depends on model)
Accuracy	+/- 0.2% of full scale	±0.1% full scale	±0.1% full scale
Wireless Data Rate	10Hz	10 Hz	10 Hz
Transmission Range	100m/328ft	100m/328ft	100m/328ft
Working Temperature	-10°C - 50°C	-10°C - 50°C	-10°C - 50°C
IP Rating	IP67	IP67	IP67
Battery	4x AA	4x AA	4x AA
Battery Life	500hr	500hr	500hr

More Features with FREE MultiGage Software*

- Simultaneous reading of multiple devices
- Data plotting on iPhone/iPad/Android
- Continuous or single data point recording
- Max, Min, TIR measurement
- Remote zeroing from the app
- GO/NG judgment with green/red color indicator
- Custom formula calculator
- Large analog probe meter with adjustable range
- Data saving in local database
- Data export in CSV via email and cloud drives
- Keyboard entry to Excel or SPC software on PC
- Apple Watch support

**MultiGage Cloud

Users can view and record readings from anywhere with our browser-based remote monitoring platform, MultiGage Cloud. Create custom dashboards, set alerts, receive notifications, and record readings remotely by connecting gauges wirelessly to our Cloud gateway. Connect up to an unlimited amount of sensors at once. MultiGage Cloud is a paid platform.



*Availability of features varies between apps/platforms.

Wireless Crankshaft Deflection Kit

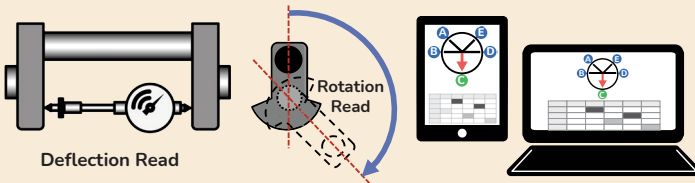
The Wireless Crankshaft Deflection Test Kit utilizes a Bluetooth crankshaft gage for crankshaft web deflection tests. Users can now have deflection data recorded easily and error-free using their iPad or Windows device.

Thanks to the built-in angle measurement, there is no need to mark test points on the crankshaft web again. The Crankshaft Test app will notify users once the crankshaft rotates to test locations. A PDF test report can be generated and stored at the end of each test. This system covers various crankshaft web gaps ranging from 160 to 720 mm with an included extension rod set.



Crankshaft Deflection	Specification
Measurement Range	0.4 in/10 mm
Resolution	0.0001 in/0.001 mm
Accuracy	0.00012 in
Wireless Data Rate	10 Hz
Transmission Range	20 m (indoors)/ 30 m (outdoors)
Crankshaft Web Gap Range	160-720 mm 145-720mm optional
Working Temperature	0-50°C

Crankshaft Deflection	Specification
Connection	Bluetooth Low Energy
Angle Measurement Resolution	1°
Rechargeable Battery	400 mAh
Battery Life	50 hrs
Charging	5 VDC USB



Included in the Package:

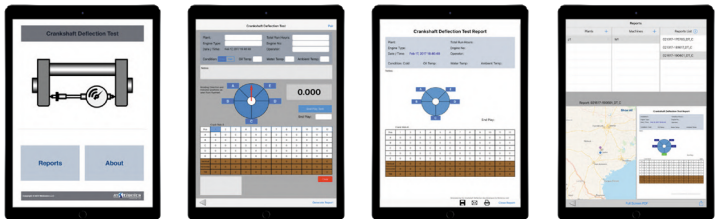
- Wireless Crankshaft Gage 1X
- Adjustable Probe 1X
- Extension Rod Set (1/2" to 6" one each) 1X
- 60° Punch 1X
- Protective Carrying Case 1X
- USB Charging Cable 1X
- USB Power Adapter 1X
- Crankshaft Deflection Test app for iPad & Windows

App Features:

- Wireless data recording
- Rotating angle indicator
- Measurement results organized in table
- Automatic test point notification
- Automatic vertical/horizontal deflection calculation
- End play test included
- Test report generation
- Tester signature
- Local report storage manager
- Email report and wireless printing



For iPad For Windows



Wireless Rotor Runout Kit

Wireless Rotor Runout Kit is a novel tool for rotor runout measurement. It consists of a Bluetooth dial indicator (BlueDial), a Bluetooth angle sensor (BlueAngle) and the iPad application Runout. Together, these sensors work to seamlessly measure both circumference deflection and rotor rotating angle to show the real contour of the rotor. The multiple-sensor connectivity of the app also allows users to add extra BlueDials to conduct runout tests on different planes simultaneously.



BlueDialBD10-783/793	Specification
Measurement Range	0.5 in/12.7 mm
Resolution	0.0005 in, 0.01 mm/0.0001 in, 0.001 mm
Accuracy	0.0008 in/0.00012 in
Wireless Data Rate	10 Hz
Transmission Range	20 m (indoors)/30 m (outdoors)
Working Temperature	0 - 50 °C
Rechargeable Battery	400 mAh
Battery Life	60 hrs

BlueAngle	Specification
Measurement Range	360 °
Resolution	0.1 °
Wireless Data Rate	50 Hz
Transmission Range	Up to 20 m
Dimensions	1.58 x 1.58 x 0.79 in
Working Temperature	0-50 °C
Rechargeable Battery	150 mAh
Battery Life	10 hrs



Bluetooth Low Energy



Rechargeable



Both deflection & angle measurement



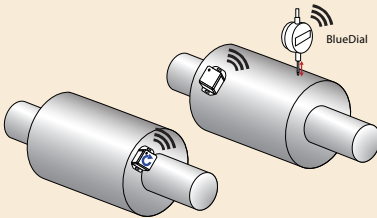
Polar and linear plot generation



Continuous recording and plotting



Data saving



Included in the Kit:

- BlueDial(s)
- BlueAngle 1X
- Rotor Runout iPad app



App Features:

- Wireless connectivity with deflection (dial indicator) sensor and angle sensor
- Multiple sensor connectivity (up to 9 simultaneously)
- Probe meter for deflection readings
- User-defined range for probe meter
- Analog rotating indicator for rotor angular position
- Remote zeroing of deflection and angle sensors
- User-defined number of test points on rotor circumference
- Cartesian plot and polar plot
- Direct screenshot of the results and plots to save in local
- Values and positions of Max/Min summarized in result table
- Measurement export via AirDrop or email in CSV format
- PDF report with test information, machine image, test results, notes, tester signature and map
- Local test records manager to retrieve previous data and reports



iPad Vibration Analyzer

Motionics' vibration analysis kit is an iPad-based vibration analyzer. It includes a low voltage piezoelectric accelerometer for accurate vibration measurement. Accelerometer signals are continuously acquired through the 2-Channel DAQ box mounted on the back of an iPad and passed to Motionics vibration apps through the iPad's lightning port.

This vibration analysis kit includes the VibraTestPro App and iVibraMeter apps. VibraTestPro is the go-to app to measure vibration on iPhone and iPad. It provides comprehensive vibration analysis features, such as a real-time waveform & spectrum viewer, ISO10816 vibration meter, raw signal recording and so on. The user can also use the iVibraMeter app on iPad for quick overall vibration tests of multiple common machines such as pumps, motors, spindles, etc. with rapid PDF report generation capability. The kit is designed modularly, so it can be converted to a vibration/rotor balancing kit by adding a tachometer with the use of the iRotorBalancer app.

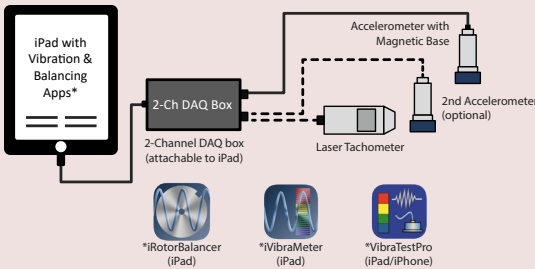
App Features:

- Vibration meter with ISO10816 (customizable) severity indicator
- Interactive real-time waveform and spectrum viewer
- Customizable graph appearance: background color, line color, line thickness, grids
- Velocity and acceleration readings (metric & imperial)
- Auto Peak detection cursor, manual cursor, and top 5 peaks detector
- Distance cursor, harmonic cursor and sideband cursor
- Vibration raw signal (auto & manual) recording (adjustable sampling rate) with local data saving
- Vibration signal export in CSV and WAV formats
- Plant-Machine-Test point structure for easy data management
- PDF test report with plant map, images, signature & notes
- Quick and single tap vibration reading for pre-defined test points on common machines (motors, fans, pumps, spindles, etc.) with auto PDF report generation



Included in the Package:

- iPad (optional and customizable)
- 2-Channel DAQ box with 2-Ch simultaneous measurement
- Industrial single channel accelerometer with magnet base
- 3ft coiled accelerometer cable (extends to 10ft)
- Custom iPad case for protection and to hold the DAQ box
- Protective Carrying Case
- iVibraMeter iPad App for overall vibration and certificate tests
- VibraTestPro iPhone/iPad App for vibration analysis
- Several other calculator apps as vibration reference tools



iPad Vibration Balancer	Specification
Sensitivity	25 mV/g
Measurement Range	±50 g
Frequency Range	30 - 900,000 cpm
Resonance Frequency	1860 kcpm
Number of Inputs	2 channels
Sampling Rate	44100 Hz
Operating Temperature	0-50 °C
Magnetic Base Pull Force	85 lbf
Accelerometer Cable	10 feet

