

### ⚠ Important Notes

- Do **NOT** look into the laser beam.
- Do **NOT** point the laser beam at people.
- Do **NOT** allow children to use the device.
- Do **NOT** allow the laser irradiation port to come in contact with a rotating body.
- Do **NOT** measure using wet or oily hands, or while wearing loosely fitting clothing.

### Description

- ① **Laser Irradiation Port** – source from which the laser is projected
- ② **Display Screen**– displays the measurement value
- ③ **Operation Key 1** – select item
- ④ **Operation Key 2** – configure settings, select item
- ⑤ **Operation Key 3** – switch measurement display, enter key
- ⑥ **Operation Key 4** – return measurement display to normal, cancel key
- ⑦ **Power/Measurement Key** – turn power on (will turn off automatically)
- ⑧ **Mounting Adapter** – allows unit to be mounted on tripod (thread size 1/4-20)
- ⑨ **Battery Compartment** – insert AA batteries



### Included in the box

BlueTak Tachometer 1x  
Carrying Case 1X  
AA Batteries 2X  
Contacts (Convex 1X, Concave 2X)  
Contact Adapter 1X  
Speed Measurement Wheel 1X  
Reflective Tape 1X  
User Guide 1X

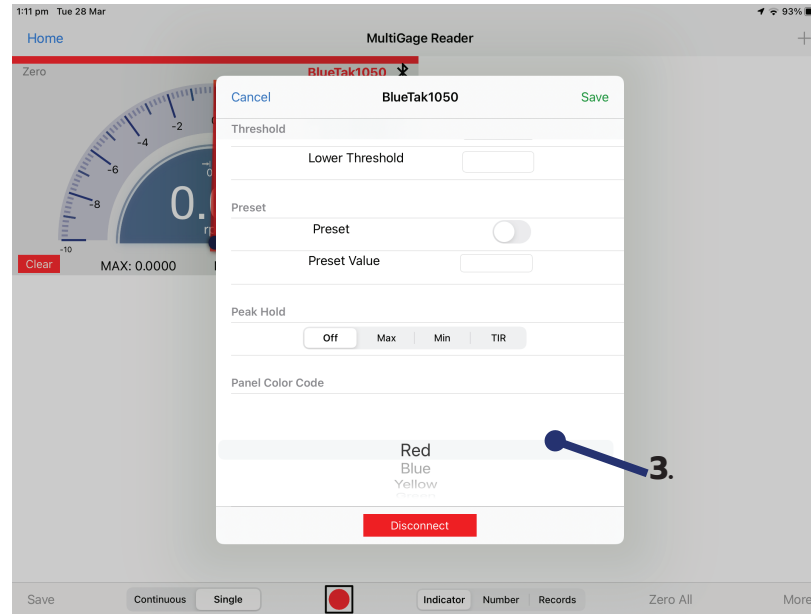
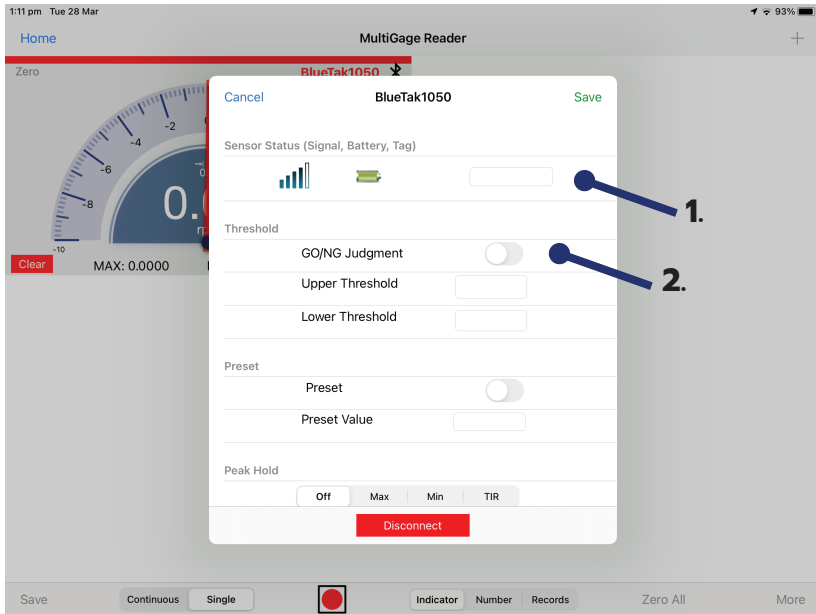
### Compatible Software

- iOS: MultiGage Reader  
Windows: MultiGage Reader (BLE Dongle Required)
- iOS App can be directly downloaded from the App Store for FREE.
  - Windows software is available at [Motionics.com/download](http://Motionics.com/download).

### Quick Start

Install 2x AA batteries in the battery compartment.  
Press the Power/Measurement Key to turn on the tachometer.  
Plug in the USB Bluetooth dongle if using Windows.  
Run the software, then tap Scan/+ button to enter the pairing page.  
Wait for the software to finish scanning nearby devices, then select BlueTakXXXX to connect.  
Connection may take a few seconds. Once paired, BlueTak readings show in the software.  
Apply the reflective tape to the object to be measured.  
Point the laser irradiation port to the reflective tape, keeping a distance of 50 to 4000 mm.  
Press the Power/Measurement Key to start measurement.  
BlueTak will automatically power off when no operation has been performed for a certain period of time (interval can be set in "Auto off" in the device system settings).

# Tachometer Settings



- 1. Device Name** - Device name is listed and can be edited (only saved to iPad edited on)
- 2. Threshold** - Enable and disable threshold & enter upper and lower threshold limits
- 3. Panel Colour** - Change colour of panel



## Changing Settings on Tachometer:

Change time for device to turn off: Auto Off timer  
(Settings -> Set System->Auto Off)

Change between single click or continuous hold measuring: Measuring Operator  
(Settings -> Set System->MEAS\_OPR)

### Contact Information

Phone: 02 4017 0198  
Email: sales@livetest.com.au  
Website: <https://livetest.com.au/>