

## Bluetooth Digital Indicator BlueDial User Guide

### ⚠ Important Notes

- Turn off the device (① and ⑥) after use. It will **NOT** turn off automatically.
- Do **NOT** open the device. Opening causes permanent damage and voids the warranty.
- BlueDial transmitter & digital indicator should be both on before pairing.
- BlueDial operates on two separate batteries:
  - 1) Rechargeable built-in Li-Po battery for the Bluetooth transmitter
  - 2) Coin SR44 or LR44 battery for the digital dial

### Description

- ① **Dial On/Off** – press to turn dial on/off
- ② **Origin Button** – press to zero dial reading; this can also be done in the App
- ③ **Unit Button** – select reading in inch/mm
- ④ **SPC Output** – SPC data output port
- ⑤ **Dial Battery** – insert coin battery SR44 or LR44 for digital dial
- ⑥ **BLE On/Off** – press to turn Bluetooth transmitter on/off
- ⑦ **Status LED**
  - – Bluetooth transmitter is on
  - – BlueDial is in charge
  - – BlueDial is fully charged
- ⑧ **Micro USB Port** – connect to USB cable to charge BlueDial



### Included in the box

- BlueDial 1X
- USB Charging Cable 1X
- USB Power Adapter 1X
- User Guide 1X

### Compatible Software

- iOS: MultiGage Reader
  - Android: MultiGage Reader
  - Windows: MultiGage Reader (BLE Dongle Required)
  - iOS App can be directly downloaded from the App Store for FREE.
  - Android App can be directly downloaded from the Google Play Store for FREE.
- Windows software is available at [Motionics.com/download](http://Motionics.com/download).

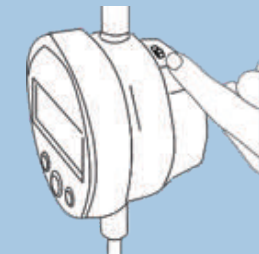
### Quick Start

- Insert SR44 or LR44 coin battery to dial indicator if it's first time use.

- Turn on **BOTH**



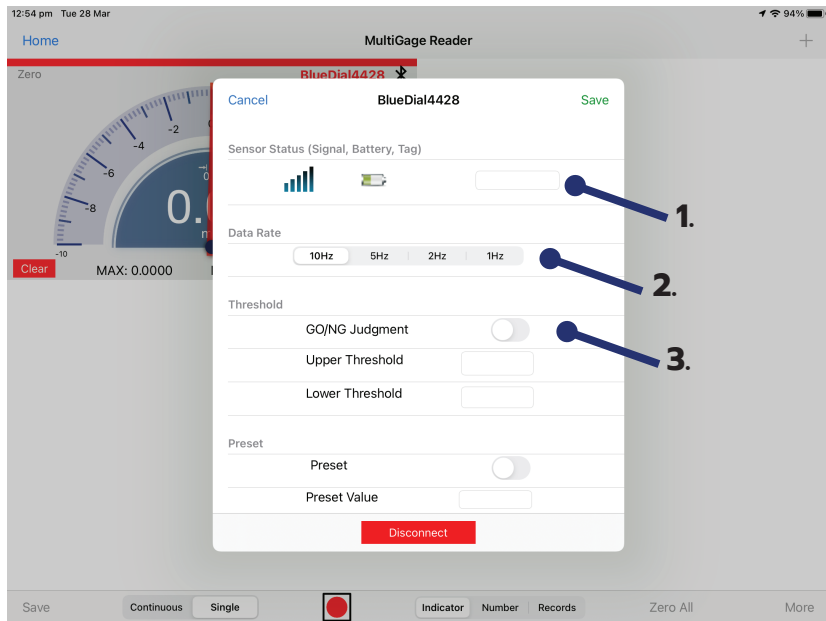
① Dial indicator



⑥ Bluetooth transmitter

- Plug in USB Bluetooth dongle if using Windows PC.
- Run the software, tap Scan/+ button to enter pairing page.
- Wait for the software to finish scanning nearby devices, select **BlueDialXXX** to connect.
- Connection may take a few seconds, once paired, BlueDial reading shows in the software.

# BlueDial Settings

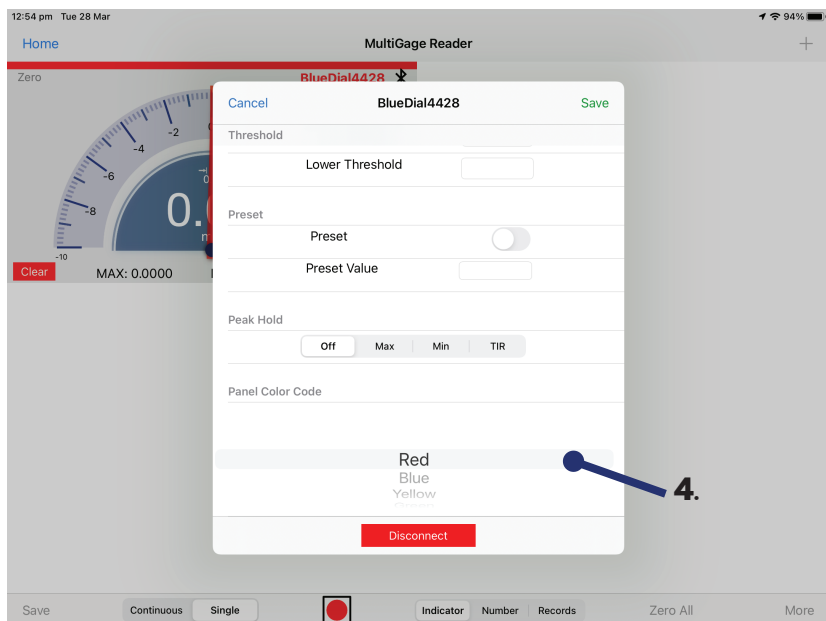


1. **Device Name** - Device name is listed and can be edited (only saved to iPad edited on)
2. **Data Rate** - Change the data rate of individual devices (Not recommended to be changed)
3. **Threshold** - Enable and disable threshold & enter upper and lower threshold limits
4. **Panel Colour** - Change colour of panel

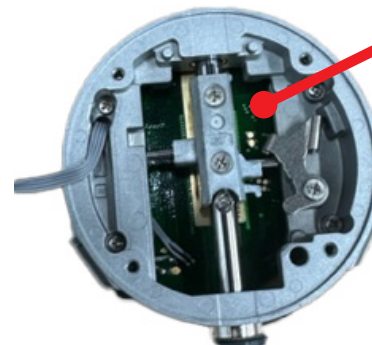
## Trouble Shooting

Check both switches on the dial are turned on.

If dial isn't returning to original position, open up the back of the dial and check to see if spring is attached like below.

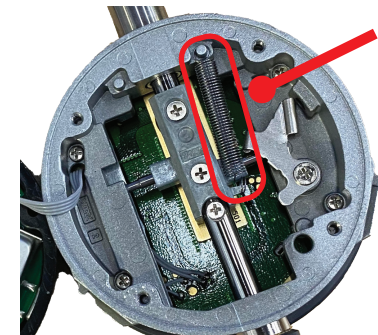


### BEFORE



If the spring is not visible check if it has fallen behind

### AFTER



Attach it back in position

\*Make sure to turn off the dial after use to save battery power\*

### Contact Information

Phone: 02 4017 0198

Email: sales@livetest.com.au

Website: <https://livetest.com.au/>