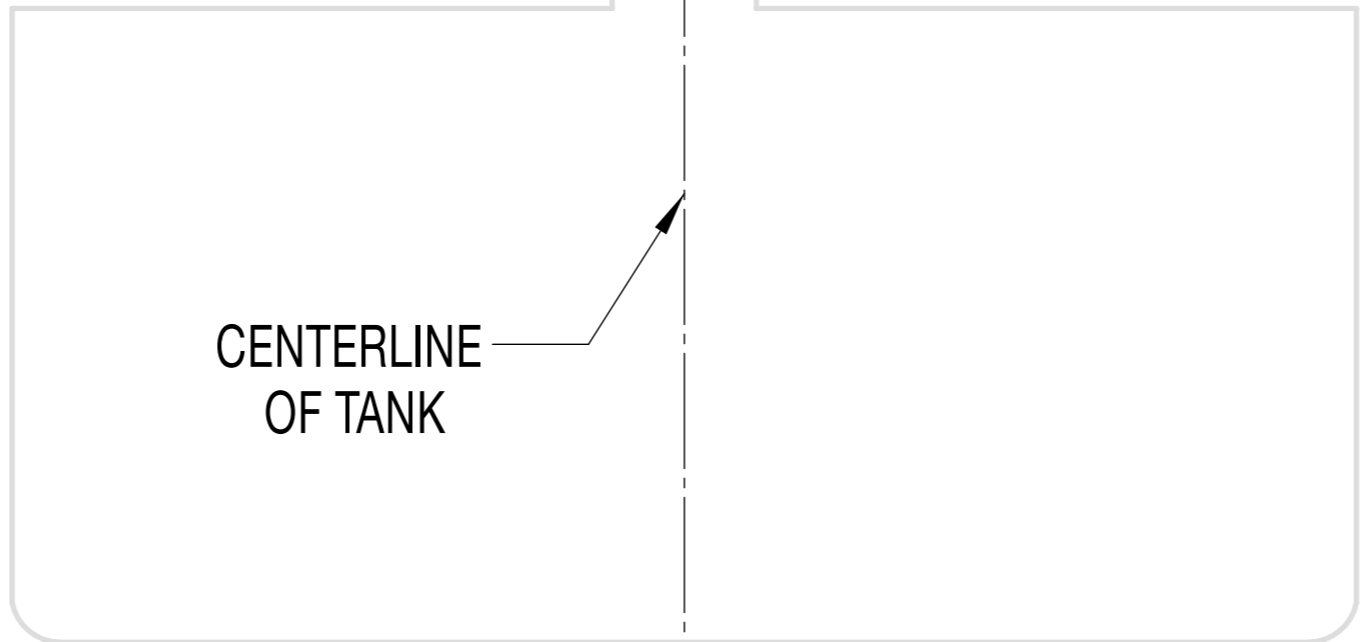


QUICK RELEASE MOUNT DRILL CHART		
FASTENING METHOD	MATERIAL YOU ARE DRILLING:	
	FOR STEEL	FOR ALUMINUM
5/16"-18 UNC SCREW AND NUT	Q (.3320)	Q (.3320)
1/4"-20 SELF TAPPING SCREW	7/32" (.2188)	#7 (.2010)



ENDO MOUNTING TEMPLATE INSTRUCTIONS - READ CAREFULLY!

1. THIS TEMPLATE MUST BE USED ON A FLAT SURFACE.
2. PLACE THE ACTUAL ASSEMBLED TANK IN THE INTENDED INSTALLATION LOCATION TO ENSURE THAT ALL OF THE COMPONENTS WILL FIT. LEAVE ROOM FOR FITTINGS AND LINES. REMOVE THE TANK.
3. PLACE THE TEMPLATE IN THE INTENDED INSTALLATION LOCATION.
4. PULL THE CORNERS TIGHT AND SECURE THEM WITH TAPE.
5. USE A PUNCH TO ACCURATELY TRANSFER THE LOCATIONS OF THE CROSS HAIRS INDICATED ABOVE, (SIMPLY DRILLING THROUGH THIS TEMPLATE IS NOT ACCURATE ENOUGH).
6. REMOVE THE TEMPLATE. DRILL ACCORDING TO YOUR HARDWARE (SEE TABLE TO THE LEFT).
7. UNINSTALL THE QUICK RELEASE MOUNTS FROM THE TANK BY FIRST LOOSENING THE SET SCREW WITH THE INCLUDED "L" WRENCH.
8. INSTALL THE QUICK RELEASE MOUNTS TO YOUR MOUNTING SURFACE EXACTLY AS SHOWN ABOVE.
9. PLACE THE TANK PINS (THE BOLTS THAT STICK OUT FROM THE TANK BODY) INTO THE QUICK RELEASE HOLES AS INDICATED ABOVE.
10. ROTATE THE TANK TO ENGAGE THE PINS INTO THE QUICK RELEASE MOUNTS.
11. REINSTALL THE SET SCREWS WITH RED LOCTITE AND TIGHTEN WITH THE INCLUDED "L" WRENCH, (TORQUE HAND TIGHT WITH THE "L" WRENCH, OR TO 3.3 ft-lbs (4.5 N-m) WITH A TORQUE DRIVER).
12. STEP BACK AND ADMIRE YOUR NEW ENDO TANK!

