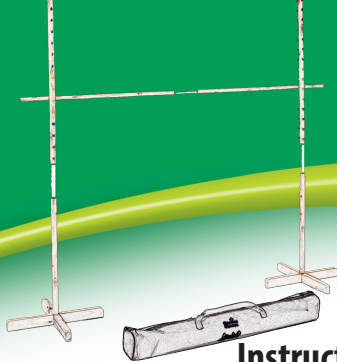


Limbo

- 4 x Cross Feet Pieces
- 2 x Bottom Upright Pole Sections
- 2 x Top Upright Pole Sections



Instructions

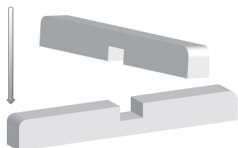
Limbo

What's in the Box?

- 2 x Cross Beam Sections
- 2 x Large Pole Connectors
- 1 x Small Pole Connector

1 Set Up

Slot together the two pairs of cross feet pieces to form each of the cross bases for the upright poles.



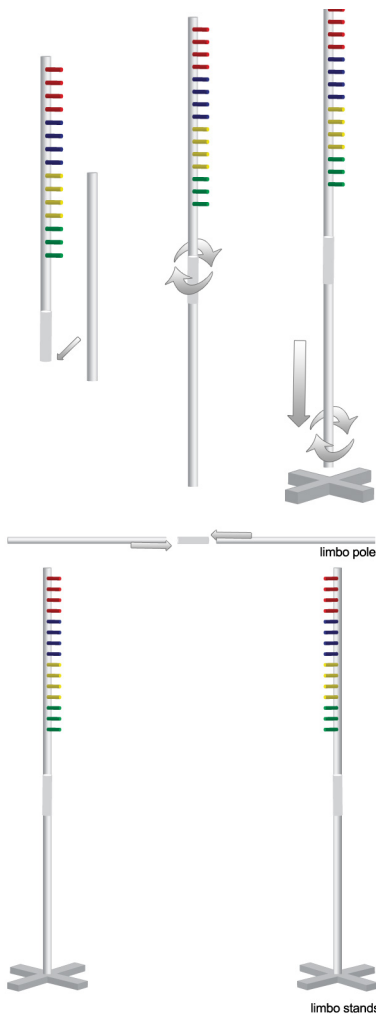
Connect one bottom upright pole section and one top upright pole section together using a large plastic connector. Twist the connector so that it is in line with the slots in the poles and push it in to secure it in place.

Repeat for the second upright pole.

Screw the bottom section of each upright pole into one of the cross feet.

Connect the two cross beam sections together using the small plastic connector. Again twist the connector so that it is in line with the slots in the poles and push them in to secure the connector in place.

Balance both ends of the crossbeam on the highest peg of the upright poles and you are ready to start the game.





2

Playing the Game

How low can you go? Take it in turns to 'limbo' under the pole (bending backwards, looking up at the ceiling/sky) without touching the ground. If you fall or touch the ground you are out. Lower the pole one peg each time and see who will be the last one limbo-ing! No ducking under the pole allowed (it's cheating)!

Not just Limbo...

You may or may not be aware that we design and make many different kinds of garden games and play equipment other than Limbo! Garden Games Limited has been designing and creating games for children and families since 1997 - so by now we really do know what we are doing. Here are just a few that can be great for the whole family, not just the kids...



The Parachute Game



Giant Tower



Giant Dominoes (in a box)



for more information on these and other products visit our website: www.gardengames.com

The logo to look out for...

There are many more products we have created - just look out for our Garden Games logo or flower emblem to be sure you have an official Garden Games Limited product.

The brand is not just a logo, it is the whole family of ideas, service and quality that are behind every product.

We are not a huge corporate and do not claim to be - we are proud of who we are and what we create

so look out for our brand knowing that each product carrying our logo has a special standard we aim to maintain for years and years to come...



Warnings



Warning! Not suitable for children under 36 months because of small parts which could be a choking hazard.

CE Please retain for future reference

+44(0)1865 391060

sales@gardengames.com

gardengames.com

@GardenGamesLtd