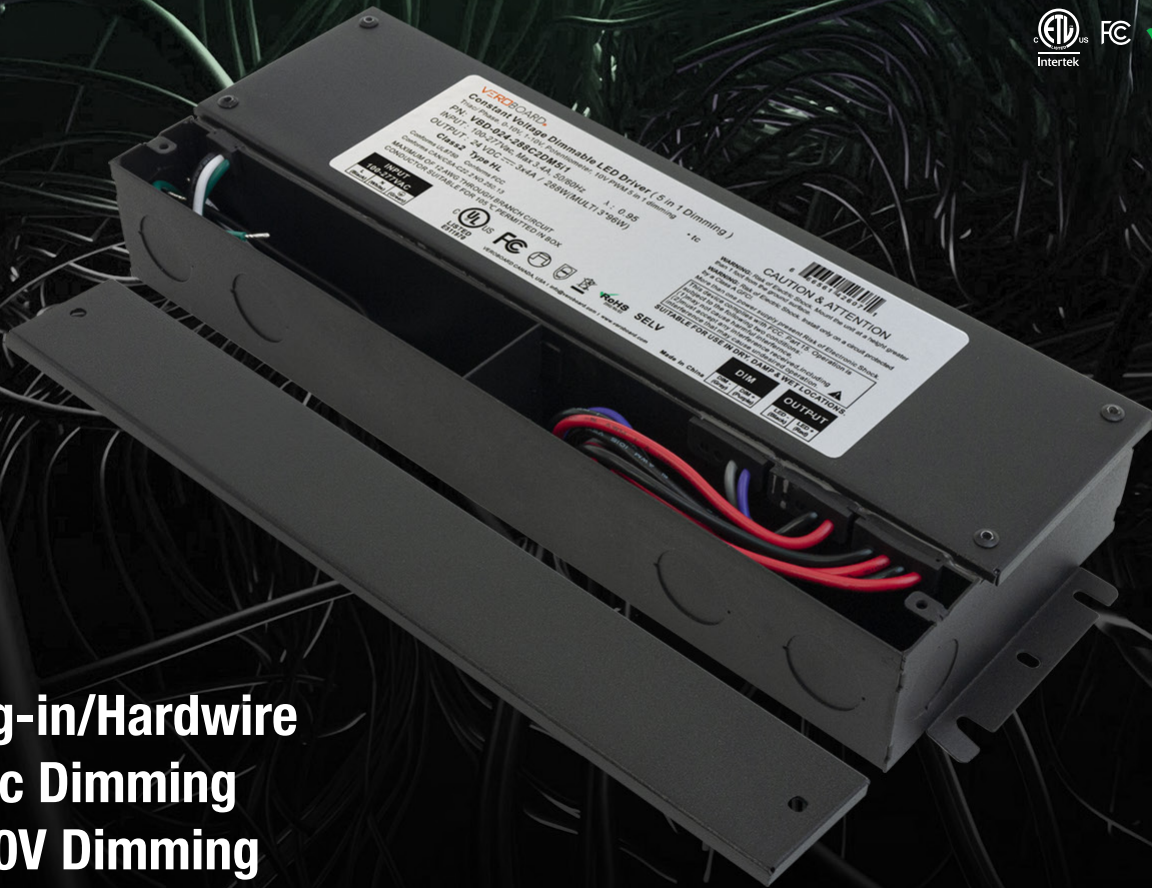


PRODUCT  
CATALOG  
2024

# VEROBOARD®

CANADIAN-BASED LIGHTING MANUFACTURER

## LED DRIVERS



Plug-in/Hardwire  
Triac Dimming  
0-10V Dimming  
**(5 in 1) 0-10V Dimming**  
Dali Dimming CV

Veroboard's diverse lineup of drivers is designed to meet the needs of a wide range of applications, providing comprehensive solutions that encompass various dimming capabilities. Whether you're powering lighting systems or other electronic devices, Veroboard has you covered with a vast array of driver options. These drivers not only offer versatility but also deliver exceptional performance, ensuring seamless integration into your projects. They come with dimming capabilities for precise control, allowing you to choose between dimmable and non-dimmable options to suit your needs.



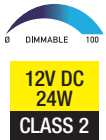
## VBD-012-024DM

|                         |                               |
|-------------------------|-------------------------------|
| <b>Input Voltage:</b>   | 100-130V AC                   |
| <b>Input Current:</b>   | 0.38A                         |
| <b>Input Frequency:</b> | 47-63 Hz                      |
| <b>Output Voltage:</b>  | 12V DC                        |
| <b>Output Current:</b>  | 2.0A                          |
| <b>Max Load:</b>        | 24W                           |
| <b>Weight:</b>          | 0.788 Kg                      |
| <b>IP Rating:</b>       | IP20 (Dry and Damp Locations) |
| <b>Dimmable:</b>        | Yes (Triac/Phase-cut Dimming) |
| <b>Standards:</b>       | FCC/ETL/RoHS                  |



**Dimensions**

|         |             |
|---------|-------------|
| Length: | 332mm (13") |
| Width:  | 78mm (3")   |
| Depth:  | 38mm (1.5") |



**SKU: 666561415761**

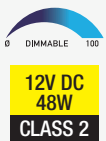
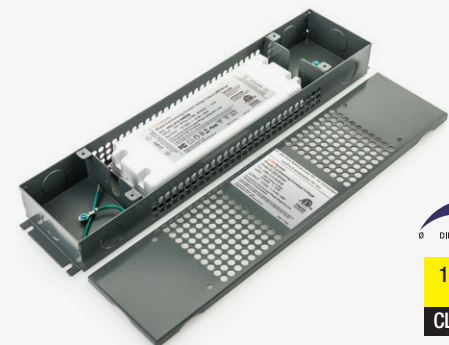
## VBD-012-048DM

|                         |                               |
|-------------------------|-------------------------------|
| <b>Input Voltage:</b>   | 100-130V AC                   |
| <b>Input Current:</b>   | 0.76A                         |
| <b>Input Frequency:</b> | 47-63 Hz                      |
| <b>Output Voltage:</b>  | 12V DC                        |
| <b>Output Current:</b>  | 4.0A                          |
| <b>Max Load:</b>        | 48W                           |
| <b>Weight:</b>          | 0.922 Kg                      |
| <b>IP Rating:</b>       | IP20 (Dry and Damp Locations) |
| <b>Dimmable:</b>        | Yes (Triac/Phase-cut Dimming) |
| <b>Standards:</b>       | FCC/ETL/RoHS                  |



**Dimensions**

|         |             |
|---------|-------------|
| Length: | 332mm (13") |
| Width:  | 78mm (3")   |
| Depth:  | 38mm (1.5") |



**SKU: 666561415754**

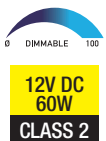
## VBD-012-060DM

|                         |                               |
|-------------------------|-------------------------------|
| <b>Input Voltage:</b>   | 100-130V AC                   |
| <b>Input Current:</b>   | 0.95A                         |
| <b>Input Frequency:</b> | 47-63 Hz                      |
| <b>Output Voltage:</b>  | 12V DC                        |
| <b>Output Current:</b>  | 5.0A                          |
| <b>Max Load:</b>        | 60W                           |
| <b>Weight:</b>          | 1.026 Kg                      |
| <b>IP Rating:</b>       | IP20 (Dry and Damp Locations) |
| <b>Dimmable:</b>        | Yes (Triac/Phase-cut Dimming) |
| <b>Standards:</b>       | FCC/ETL/RoHS                  |



**Dimensions**

|         |             |
|---------|-------------|
| Length: | 332mm (13") |
| Width:  | 78mm (3")   |
| Depth:  | 38mm (1.5") |



**SKU: 666561415747**

## VBD-012-060VTSP

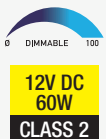
|                         |                               |
|-------------------------|-------------------------------|
| <b>Input Voltage:</b>   | 100-277V AC                   |
| <b>Input Current:</b>   | 0.9A                          |
| <b>Input Frequency:</b> | 50-60 Hz                      |
| <b>Output Voltage:</b>  | 12V DC                        |
| <b>Output Current:</b>  | 5A                            |
| <b>Max Load:</b>        | 60W                           |
| <b>Weight:</b>          | 0.224 Kg                      |
| <b>IP Rating:</b>       | IP20 (Dry and Damp Locations) |
| <b>Dimmable:</b>        | Yes (Triac/Phase-cut Dimming) |
| <b>Standards:</b>       | FCC/cUL/RoHS                  |



**Dimensions**

|         |               |
|---------|---------------|
| Length: | 300mm (11.8") |
| Width:  | 31mm (1.22")  |
| Depth:  | 19mm (0.75")  |

### Ultra Slim LED Driver



**SKU: 666561419752**

## VBD-012-096DM

|                         |                                    |
|-------------------------|------------------------------------|
| <b>Input Voltage:</b>   | 100-130V AC                        |
| <b>Input Current:</b>   | 1.53A                              |
| <b>Input Frequency:</b> | 47-63 Hz                           |
| <b>Output Voltage:</b>  | 12V DC                             |
| <b>Output Current:</b>  | 8.0A                               |
| <b>Max Load:</b>        | 96W                                |
| <b>Weight:</b>          | 1.732 Kg                           |
| <b>IP Rating:</b>       | IP67 (Dry, Damp and Wet Locations) |
| <b>Dimmable:</b>        | Yes (Triac/Phase-cut Dimming)      |
| <b>Standards:</b>       | FCC/ETL/RoHS                       |



**Dimensions**

|         |                |
|---------|----------------|
| Length: | 362mm (14.25") |
| Width:  | 79mm (3")      |
| Depth:  | 56mm (2.20")   |



12V DC  
96W

SKU: 666561415730

## VBD-012-100VTSP

|                         |                               |
|-------------------------|-------------------------------|
| <b>Input Voltage:</b>   | 100-277V AC                   |
| <b>Input Current:</b>   | 1.4A                          |
| <b>Input Frequency:</b> | 50-60 Hz                      |
| <b>Output Voltage:</b>  | 12V DC                        |
| <b>Output Current:</b>  | 8.33A                         |
| <b>Max Load:</b>        | 100W                          |
| <b>Weight:</b>          | 0.294 Kg                      |
| <b>IP Rating:</b>       | IP20 (Dry and Damp Locations) |
| <b>Dimmable:</b>        | Yes (Triac/Phase-cut Dimming) |
| <b>Standards:</b>       | FCC/cUL/RoHS                  |



**Dimensions**

|         |               |
|---------|---------------|
| Length: | 300mm (11.8") |
| Width:  | 30mm (1.18")  |
| Depth:  | 22mm (0.85")  |

### Ultra Slim LED Driver



12V DC  
100W  
CLASS 2

SKU: 666561419776

## VBD-012-150DM

|                         |                                    |
|-------------------------|------------------------------------|
| <b>Input Voltage:</b>   | 100-130V AC                        |
| <b>Input Current:</b>   | 2.39A                              |
| <b>Input Frequency:</b> | 47-63 Hz                           |
| <b>Output Voltage:</b>  | 12V DC                             |
| <b>Output Current:</b>  | 12.5A                              |
| <b>Max Load:</b>        | 150W                               |
| <b>Weight:</b>          | 2.318 Kg                           |
| <b>IP Rating:</b>       | IP67 (Dry, Damp and Wet Locations) |
| <b>Dimmable:</b>        | Yes (Triac/Phase-cut Dimming)      |
| <b>Standards:</b>       | FCC/ETL/RoHS                       |



**Dimensions**

|         |                |
|---------|----------------|
| Length: | 392mm (15.43") |
| Width:  | 87mm (3.42")   |
| Depth:  | 60mm (2.36")   |



12V DC  
150W

SKU: 666561415723

## VBD-012-200DM

|                         |                                    |
|-------------------------|------------------------------------|
| <b>Input Voltage:</b>   | 100-130V AC                        |
| <b>Input Current:</b>   | 3.18A                              |
| <b>Input Frequency:</b> | 47-63 Hz                           |
| <b>Output Voltage:</b>  | 12V DC                             |
| <b>Output Current:</b>  | 16.6A                              |
| <b>Max Load:</b>        | 200W                               |
| <b>Weight:</b>          | 2.306 Kg                           |
| <b>IP Rating:</b>       | IP67 (Dry, Damp and Wet Locations) |
| <b>Dimmable:</b>        | Yes (Triac/Phase-cut Dimming)      |
| <b>Standards:</b>       | FCC/ETL/RoHS                       |



**Dimensions**

|         |                |
|---------|----------------|
| Length: | 392mm (15.43") |
| Width:  | 87mm (3.42")   |
| Depth:  | 60mm (2.36")   |



12V DC  
200W

SKU: 666561415716

## VBD-012-300VTHWJ

|                         |                               |
|-------------------------|-------------------------------|
| <b>Input Voltage:</b>   | 100-277V AC                   |
| <b>Input Current:</b>   | 3.4A                          |
| <b>Input Frequency:</b> | 47-63 Hz                      |
| <b>Output Voltage:</b>  | 12V DC                        |
| <b>Output Current:</b>  | 25A                           |
| <b>Max Load:</b>        | 300W                          |
| <b>Weight:</b>          | 2.4 Kg                        |
| <b>IP Rating:</b>       | IP65 (Wet Locations)          |
| <b>Dimmable:</b>        | Yes (Triac/Phase-cut Dimming) |
| <b>Standards:</b>       | FCC/cUL/RoHS                  |



**Dimensions**

|         |                |
|---------|----------------|
| Length: | 440mm (17.32") |
| Width:  | 86mm (3.38")   |
| Depth:  | 60mm (2.36")   |



12V DC  
300W

SKU: 666561419790

## VBD-024-024DM

|                         |                               |
|-------------------------|-------------------------------|
| <b>Input Voltage:</b>   | 100-130V AC                   |
| <b>Input Current:</b>   | 0.38A                         |
| <b>Input Frequency:</b> | 47-63 Hz                      |
| <b>Output Voltage:</b>  | 24V DC                        |
| <b>Output Current:</b>  | 1A                            |
| <b>Max Load:</b>        | 24W                           |
| <b>Weight:</b>          | 0.804 Kg                      |
| <b>IP Rating:</b>       | IP20 (Dry and Damp Locations) |
| <b>Dimmable:</b>        | Yes (Triac/Phase-cut Dimming) |
| <b>Standards:</b>       | FCC/ETL/RoHS                  |



**Dimensions**

|         |             |
|---------|-------------|
| Length: | 332mm (13") |
| Width:  | 78mm (3")   |
| Depth:  | 38mm (1.5") |



24V DC  
24W  
CLASS 2

SKU: 666561415839

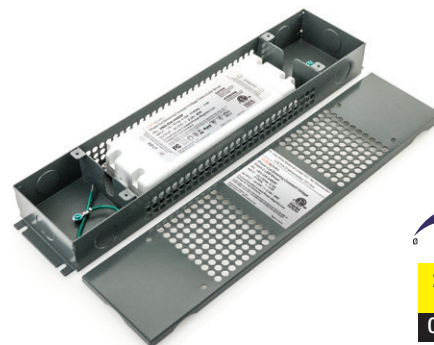
## VBD-024-048DM

|                         |                               |
|-------------------------|-------------------------------|
| <b>Input Voltage:</b>   | 100-130V AC                   |
| <b>Input Current:</b>   | 0.76A                         |
| <b>Input Frequency:</b> | 47-63 Hz                      |
| <b>Output Voltage:</b>  | 24V DC                        |
| <b>Output Current:</b>  | 2.0A                          |
| <b>Max Load:</b>        | 48W                           |
| <b>Weight:</b>          | 0.898 Kg                      |
| <b>IP Rating:</b>       | IP20 (Dry and Damp Locations) |
| <b>Dimmable:</b>        | Yes (Triac/Phase-cut Dimming) |
| <b>Standards:</b>       | FCC/ETL/RoHS                  |



**Dimensions**

|         |             |
|---------|-------------|
| Length: | 332mm (13") |
| Width:  | 78mm (3")   |
| Depth:  | 38mm (1.5") |



24V DC  
48W  
CLASS 2

SKU: 666561415822

## VBD-024-060DM

|                         |                               |
|-------------------------|-------------------------------|
| <b>Input Voltage:</b>   | 100-130V AC                   |
| <b>Input Current:</b>   | 0.95A                         |
| <b>Input Frequency:</b> | 47-63 Hz                      |
| <b>Output Voltage:</b>  | 24V DC                        |
| <b>Output Current:</b>  | 2.5A                          |
| <b>Max Load:</b>        | 60W                           |
| <b>Weight:</b>          | 1.022 Kg                      |
| <b>IP Rating:</b>       | IP20 (Dry and Damp Locations) |
| <b>Dimmable:</b>        | Yes (Triac/Phase-cut Dimming) |
| <b>Standards:</b>       | FCC/ETL/RoHS                  |



**Dimensions**

|         |             |
|---------|-------------|
| Length: | 332mm (13") |
| Width:  | 78mm (3")   |
| Depth:  | 38mm (1.5") |



24V DC  
60W  
CLASS 2

SKU: 666561415815

## VBD-024-060VTSP

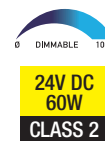
|                         |                               |
|-------------------------|-------------------------------|
| <b>Input Voltage:</b>   | 100-277V AC                   |
| <b>Input Current:</b>   | 0.9A                          |
| <b>Input Frequency:</b> | 50-60 Hz                      |
| <b>Output Voltage:</b>  | 24V DC                        |
| <b>Output Current:</b>  | 2.5A                          |
| <b>Max Load:</b>        | 60W                           |
| <b>Weight:</b>          | 0.234 Kg                      |
| <b>IP Rating:</b>       | IP20 (Dry and Damp Locations) |
| <b>Dimmable:</b>        | Yes (Triac/Phase-cut Dimming) |
| <b>Standards:</b>       | FCC/UL/RoHS                   |



**Dimensions**

|         |               |
|---------|---------------|
| Length: | 300mm (11.8") |
| Width:  | 31mm (1.22")  |
| Depth:  | 19mm (0.75")  |

### Ultra Slim LED Driver



**SKU: 666561419769**

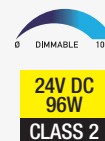
## VBD-024-096DM

|                         |                                    |
|-------------------------|------------------------------------|
| <b>Input Voltage:</b>   | 100-130V AC                        |
| <b>Input Current:</b>   | 1.53A                              |
| <b>Input Frequency:</b> | 47-63 Hz                           |
| <b>Output Voltage:</b>  | 24V DC                             |
| <b>Output Current:</b>  | 4A                                 |
| <b>Max Load:</b>        | 96W                                |
| <b>Weight:</b>          | 1.76 Kg                            |
| <b>IP Rating:</b>       | IP67 (Dry, Damp and Wet Locations) |
| <b>Dimmable:</b>        | Yes (Triac/Phase-cut Dimming)      |
| <b>Standards:</b>       | FCC/ETL/RoHS                       |



**Dimensions**

|         |                |
|---------|----------------|
| Length: | 362mm (14.25") |
| Width:  | 79mm (3")      |
| Depth:  | 56mm (2.20")   |



**SKU: 666561415808**

## VBD-024-096VTSP

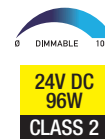
|                         |                               |
|-------------------------|-------------------------------|
| <b>Input Voltage:</b>   | 100-277V AC                   |
| <b>Input Current:</b>   | 1.3A                          |
| <b>Input Frequency:</b> | 50-60 Hz                      |
| <b>Output Voltage:</b>  | 24V DC                        |
| <b>Output Current:</b>  | 4A                            |
| <b>Max Load:</b>        | 96W                           |
| <b>Weight:</b>          | 0.312 Kg                      |
| <b>IP Rating:</b>       | IP20 (Dry and Damp Locations) |
| <b>Dimmable:</b>        | Yes (Triac/Phase-cut Dimming) |
| <b>Standards:</b>       | FCC/cUL/RoHS                  |



**Dimensions**

|         |               |
|---------|---------------|
| Length: | 300mm (11.8") |
| Width:  | 30mm (1.18")  |
| Depth:  | 22mm (0.85")  |

### Ultra Slim LED Driver



**SKU: 666561419783**

## VBD-024-150DM

|                         |                                    |
|-------------------------|------------------------------------|
| <b>Input Voltage:</b>   | 100-130V AC                        |
| <b>Input Current:</b>   | 2.39A                              |
| <b>Input Frequency:</b> | 47-63 Hz                           |
| <b>Output Voltage:</b>  | 24V DC                             |
| <b>Output Current:</b>  | 6.25A                              |
| <b>Max Load:</b>        | 150W                               |
| <b>Weight:</b>          | 2.28 Kg                            |
| <b>IP Rating:</b>       | IP67 (Dry, Damp and Wet Locations) |
| <b>Dimmable:</b>        | Yes (Triac/Phase-cut Dimming)      |
| <b>Standards:</b>       | FCC/ETL/RoHS                       |



**Dimensions**

|         |                |
|---------|----------------|
| Length: | 392mm (15.43") |
| Width:  | 87mm (3.42")   |
| Depth:  | 60mm (2.36")   |



**SKU: 666561415792**

## VBD-024-200DM

|                         |                                    |
|-------------------------|------------------------------------|
| <b>Input Voltage:</b>   | 100-130V AC                        |
| <b>Input Current:</b>   | 3.18A                              |
| <b>Input Frequency:</b> | 47-63 Hz                           |
| <b>Output Voltage:</b>  | 24V DC                             |
| <b>Output Current:</b>  | 8.3A                               |
| <b>Max Load:</b>        | 200W                               |
| <b>Weight:</b>          | 2.292 Kg                           |
| <b>IP Rating:</b>       | IP67 (Dry, Damp and Wet Locations) |
| <b>Dimmable:</b>        | Yes (Triac/Phase-cut Dimming)      |
| <b>Standards:</b>       | FCC/ETL/RoHS                       |



**Dimensions**

|         |                |
|---------|----------------|
| Length: | 392mm (15.43") |
| Width:  | 87mm (3.42")   |
| Depth:  | 60mm (2.36")   |



24V DC  
200W

SKU: 666561415785

## VBD-024-300VTHWJ

|                         |                               |
|-------------------------|-------------------------------|
| <b>Input Voltage:</b>   | 100-277V AC                   |
| <b>Input Current:</b>   | 3.4A                          |
| <b>Input Frequency:</b> | 47-63 Hz                      |
| <b>Output Voltage:</b>  | 24V DC                        |
| <b>Output Current:</b>  | 12.5A                         |
| <b>Max Load:</b>        | 300W                          |
| <b>Weight:</b>          | 2.4 Kg                        |
| <b>IP Rating:</b>       | IP65 (Wet Locations)          |
| <b>Dimmable:</b>        | Yes (Triac/Phase-cut Dimming) |
| <b>Standards:</b>       | FCC/cUL/RoHS                  |



**Dimensions**

|         |                |
|---------|----------------|
| Length: | 440mm (17.32") |
| Width:  | 86mm (3.38")   |
| Depth:  | 60mm (2.36")   |



24V DC  
300W

SKU: 666561419806

## OTM-W60-36-F

|                         |                                     |
|-------------------------|-------------------------------------|
| <b>Input Voltage:</b>   | 100-277V                            |
| <b>Input Current:</b>   | 0.86A                               |
| <b>Input Frequency:</b> | 50-60 Hz                            |
| <b>Output Voltage:</b>  | 36V                                 |
| <b>Output Current:</b>  | 1.67A                               |
| <b>Max Load:</b>        | 60W                                 |
| <b>Weight:</b>          | 1.675 Kg                            |
| <b>IP Rating:</b>       | IP67 (Dry, Damp, and Wet Locations) |
| <b>Dimmable:</b>        | Yes (0-10V/1-10V Dimming)           |
| <b>Standards:</b>       | cUL/CE                              |



**Dimensions**

|         |                 |
|---------|-----------------|
| Length: | 333mm (13.12")  |
| Width:  | 78.33mm (3.1")  |
| Depth:  | 56.81mm (2.23") |



36V  
60W

SKU: 666561430320

## OTM-W60-48-F

|                         |                                     |
|-------------------------|-------------------------------------|
| <b>Input Voltage:</b>   | 100-277V                            |
| <b>Input Current:</b>   | 0.86A                               |
| <b>Input Frequency:</b> | 50-60 Hz                            |
| <b>Output Voltage:</b>  | 36V                                 |
| <b>Output Current:</b>  | 1.25A                               |
| <b>Max Load:</b>        | 60W                                 |
| <b>Weight:</b>          | 1.659 Kg                            |
| <b>IP Rating:</b>       | IP67 (Dry, Damp, and Wet Locations) |
| <b>Dimmable:</b>        | Yes (0-10V/1-10V Dimming)           |
| <b>Standards:</b>       | cUL/CE                              |



**Dimensions**

|         |                 |
|---------|-----------------|
| Length: | 333mm (13.12")  |
| Width:  | 78.33mm (3.1")  |
| Depth:  | 56.81mm (2.23") |



48V  
60W

SKU: 666561430313

**OTM-W100-36-F**

|                         |                                     |
|-------------------------|-------------------------------------|
| <b>Input Voltage:</b>   | 100-277V                            |
| <b>Input Current:</b>   | 1.44A                               |
| <b>Input Frequency:</b> | 50-60 Hz                            |
| <b>Output Voltage:</b>  | 36V                                 |
| <b>Output Current:</b>  | 2.8A                                |
| <b>Max Load:</b>        | 100W                                |
| <b>Weight:</b>          | 1.885 Kg                            |
| <b>IP Rating:</b>       | IP67 (Dry, Damp, and Wet Locations) |
| <b>Dimmable:</b>        | Yes (0-10V/1-10V Dimming)           |
| <b>Standards:</b>       | cUL/CE                              |



**Dimensions**

|         |                 |
|---------|-----------------|
| Length: | 362mm (14.25")  |
| Width:  | 78.71mm (3.1")  |
| Depth:  | 57.60mm (2.26") |



36V  
100W

SKU: 666561430337

**OTM-W200-36-F**

|                         |                                     |
|-------------------------|-------------------------------------|
| <b>Input Voltage:</b>   | 100-277V                            |
| <b>Input Current:</b>   | 2.78A                               |
| <b>Input Frequency:</b> | 50-60 Hz                            |
| <b>Output Voltage:</b>  | 36V                                 |
| <b>Output Current:</b>  | 5.6A                                |
| <b>Max Load:</b>        | 200W                                |
| <b>Weight:</b>          | 2.397 Kg                            |
| <b>IP Rating:</b>       | IP67 (Dry, Damp, and Wet Locations) |
| <b>Dimmable:</b>        | Yes (0-10V/1-10V Dimming)           |
| <b>Standards:</b>       | cUL/CE                              |



**Dimensions**

|         |                 |
|---------|-----------------|
| Length: | 393mm (15.47")  |
| Width:  | 83.45mm (3.28") |
| Depth:  | 59.78mm (2.35") |



36V  
200W

SKU: 666561430344

**OTM-W200-48-F**

|                         |                                     |
|-------------------------|-------------------------------------|
| <b>Input Voltage:</b>   | 100-277V                            |
| <b>Input Current:</b>   | 2.78A                               |
| <b>Input Frequency:</b> | 50-60 Hz                            |
| <b>Output Voltage:</b>  | 48V                                 |
| <b>Output Current:</b>  | 4.17A                               |
| <b>Max Load:</b>        | 200W                                |
| <b>Weight:</b>          | 2.385 Kg                            |
| <b>IP Rating:</b>       | IP67 (Dry, Damp, and Wet Locations) |
| <b>Dimmable:</b>        | Yes (0-10V/1-10V Dimming)           |
| <b>Standards:</b>       | cUL/CE                              |



**Dimensions**

|         |                 |
|---------|-----------------|
| Length: | 393mm (15.47")  |
| Width:  | 83.45mm (3.28") |
| Depth:  | 59.78mm (2.35") |



48V  
200W

SKU: 666561420000

**OTM-W200-48-F**

|                         |                                     |
|-------------------------|-------------------------------------|
| <b>Input Voltage:</b>   | 110-277V                            |
| <b>Input Current:</b>   | 4.2A                                |
| <b>Input Frequency:</b> | 50-60 Hz                            |
| <b>Output Voltage:</b>  | 48V                                 |
| <b>Output Current:</b>  | 6.25A                               |
| <b>Max Load:</b>        | 300W                                |
| <b>Weight:</b>          | 2.670 Kg                            |
| <b>IP Rating:</b>       | IP67 (Dry, Damp, and Wet Locations) |
| <b>Dimmable:</b>        | Yes (0-10V/1-10V Dimming)           |
| <b>Standards:</b>       | cUL/CE                              |



**Dimensions**

|         |                |
|---------|----------------|
| Length: | 434mm (17.08") |
| Width:  | 85mm (3.34")   |
| Depth:  | 61mm (2.4")    |



48V  
300W

SKU: 666561431037



## VBD-012-080VTD2JV2

|                         |  |
|-------------------------|--|
| <b>Input Voltage:</b>   | 100-277V AC                                    |
| <b>Input Current:</b>   | 1.15A  |
| <b>Input Frequency:</b> | 50-60 Hz                                       |
| <b>Output Voltage:</b>  | 12V DC   |
| <b>Output Current:</b>  | 6.67A  |
| <b>Max Load:</b>        | 80W  |
| <b>Weight:</b>          | 1.854 Kg                                       |
| <b>IP Rating:</b>       | IP67 (Dry, Damp and Wet Locations)             |
| <b>Dimmable:</b>        | Yes (5 in 1 Dimming-Triac/Phase/MLV/ELV/O-10V) |
| <b>Standards:</b>       | FCC/cUL/RoHS                                   |



**Dimensions**

|         |                |
|---------|----------------|
| Length: | 362mm (14.25") |
| Width:  | 78mm (3")      |
| Depth:  | 56mm (2.20")   |



12V DC  
80W

SKU: 666561419233

## VBD-024-030VTD2JV2

|                         |  |
|-------------------------|--|
| <b>Input Voltage:</b>   | 100-277V AC                                    |
| <b>Input Current:</b>   | 0.5A   |
| <b>Input Frequency:</b> | 50-60 Hz                                       |
| <b>Output Voltage:</b>  | 24V DC   |
| <b>Output Current:</b>  | 1.25A  |
| <b>Max Load:</b>        | 30W  |
| <b>Weight:</b>          | 0.812 Kg                                       |
| <b>IP Rating:</b>       | IP20 (Dry and Damp Locations)                  |
| <b>Dimmable:</b>        | Yes (5 in 1 Dimming-Triac/Phase/MLV/ELV/O-10V) |
| <b>Standards:</b>       | FCC/cUL/RoHS                                   |



**Dimensions**

|         |             |
|---------|-------------|
| Length: | 332mm (13") |
| Width:  | 78mm (3")   |
| Depth:  | 38mm (1.5") |



24V DC  
30W  
CLASS 2

SKU: 666561419202

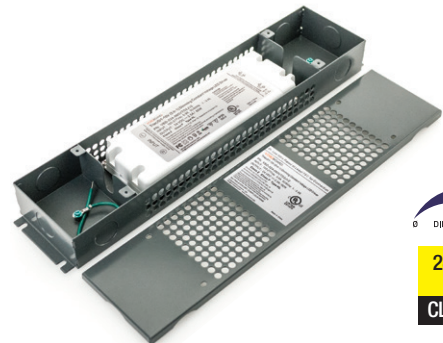
## VBD-024-060VTD2JV2

|                         |  |
|-------------------------|--|
| <b>Input Voltage:</b>   | 100-277V AC                                    |
| <b>Input Current:</b>   | 0.9A   |
| <b>Input Frequency:</b> | 50-60 Hz                                       |
| <b>Output Voltage:</b>  | 24V DC   |
| <b>Output Current:</b>  | 2.5A   |
| <b>Max Load:</b>        | 60W  |
| <b>Weight:</b>          | 0.932 Kg                                       |
| <b>IP Rating:</b>       | IP20 (Dry and Damp Locations)                  |
| <b>Dimmable:</b>        | Yes (5 in 1 Dimming-Triac/Phase/MLV/ELV/O-10V) |
| <b>Standards:</b>       | FCC/cUL/RoHS                                   |



**Dimensions**

|         |             |
|---------|-------------|
| Length: | 332mm (13") |
| Width:  | 78mm (3")   |
| Depth:  | 38mm (1.5") |



24V DC  
60W  
CLASS 2

SKU: 666561419226

## VBD-024-080VTD2JV2

|                         |  |
|-------------------------|--|
| <b>Input Voltage:</b>   | 100-277V AC                                    |
| <b>Input Current:</b>   | 1.15A  |
| <b>Input Frequency:</b> | 50-60 Hz                                       |
| <b>Output Voltage:</b>  | 24V DC   |
| <b>Output Current:</b>  | 3.33A  |
| <b>Max Load:</b>        | 80W  |
| <b>Weight:</b>          | 1.836 Kg                                       |
| <b>IP Rating:</b>       | IP67 (Dry, Damp and Wet Locations)             |
| <b>Dimmable:</b>        | Yes (5 in 1 Dimming-Triac/Phase/MLV/ELV/O-10V) |
| <b>Standards:</b>       | FCC/cUL/RoHS                                   |



**Dimensions**

|         |                |
|---------|----------------|
| Length: | 362mm (14.25") |
| Width:  | 78mm (3")      |
| Depth:  | 56mm (2.2")    |



24V DC  
80W  
CLASS 2

SKU: 666561419240

## OTM-TD30

|                         |                               |
|-------------------------|-------------------------------|
| <b>Input Voltage:</b>   | 100-130V AC                   |
| <b>Input Current:</b>   | 0.24A                         |
| <b>Input Frequency:</b> | 50-60 Hz                      |
| <b>Output Voltage:</b>  | 12V DC                        |
| <b>Output Current:</b>  | 2.0A                          |
| <b>Max Load:</b>        | 24W                           |
| <b>Weight:</b>          | 0.098 Kg                      |
| <b>IP Rating:</b>       | IP20 (Dry and Damp Locations) |
| <b>Dimmable:</b>        | Yes (0-10V Dimming)           |
| <b>Standards:</b>       | ETL/RoHS                      |



**Dimensions**  
 Diameter: 72.40mm (2.85")  
 Depth: 26.84mm (1.05")



**12V DC**  
**24W**  
**CLASS 2**

**SKU: 666561425531**

## OTM-TD30-24

|                         |                               |
|-------------------------|-------------------------------|
| <b>Input Voltage:</b>   | 100-130V AC                   |
| <b>Input Current:</b>   | 0.24A                         |
| <b>Input Frequency:</b> | 50-60 Hz                      |
| <b>Output Voltage:</b>  | 24V DC                        |
| <b>Output Current:</b>  | 1.25A                         |
| <b>Max Load:</b>        | 30W                           |
| <b>Weight:</b>          | 0.110 Kg                      |
| <b>IP Rating:</b>       | IP20 (Dry and Damp Locations) |
| <b>Dimmable:</b>        | Yes (0-10V Dimming)           |
| <b>Standards:</b>       | ETL/RoHS                      |



**Dimensions**  
 Diameter: 72.40mm (2.85")  
 Depth: 26.84mm (1.05")



**24V DC**  
**30W**  
**CLASS 2**

**SKU: 666561425548**

## OTM-TD20

|                         |                               |
|-------------------------|-------------------------------|
| <b>Input Voltage:</b>   | 100-130V AC                   |
| <b>Input Current:</b>   | 0.24A                         |
| <b>Input Frequency:</b> | 50-60 Hz                      |
| <b>Output Voltage:</b>  | 12V DC                        |
| <b>Output Current:</b>  | 1.5A                          |
| <b>Max Load:</b>        | 18W                           |
| <b>Weight:</b>          | 0.072 Kg                      |
| <b>IP Rating:</b>       | IP20 (Dry and Damp Locations) |
| <b>Dimmable:</b>        | Yes (0-10V Dimming)           |
| <b>Standards:</b>       | ETL/RoHS                      |



**Dimensions**  
 Diameter: 66.16mm (2.6")  
 Depth: 20.15mm (0.8")



**12V DC**  
**18W**  
**CLASS 2**

**SKU: 666561425517**

## OTM-TD20-24

|                         |                               |
|-------------------------|-------------------------------|
| <b>Input Voltage:</b>   | 100-130V AC                   |
| <b>Input Current:</b>   | 0.24A                         |
| <b>Input Frequency:</b> | 50-60 Hz                      |
| <b>Output Voltage:</b>  | 24V DC                        |
| <b>Output Current:</b>  | 0.83A                         |
| <b>Max Load:</b>        | 19.92W                        |
| <b>Weight:</b>          | 0.072 Kg                      |
| <b>IP Rating:</b>       | IP20 (Dry and Damp Locations) |
| <b>Dimmable:</b>        | Yes (0-10V Dimming)           |
| <b>Standards:</b>       | ETL/RoHS                      |



**Dimensions**  
 Diameter: 66.16mm (2.6")  
 Depth: 20.15mm (0.8")



**24V DC**  
**20W**  
**CLASS 2**

**SKU: 666561425524**

## OTM-TD12

|                         |                               |
|-------------------------|-------------------------------|
| <b>Input Voltage:</b>   | 100-130V AC                   |
| <b>Input Current:</b>   | 0.1A                          |
| <b>Input Frequency:</b> | 50-60 Hz                      |
| <b>Output Voltage:</b>  | 12V DC                        |
| <b>Output Current:</b>  | 0.1A                          |
| <b>Max Load:</b>        | 12W                           |
| <b>Weight:</b>          | 0.044 Kg                      |
| <b>IP Rating:</b>       | IP20 (Dry and Damp Locations) |
| <b>Dimmable:</b>        | Yes (0-10V Dimming)           |
| <b>Standards:</b>       | ETL/RoHS                      |



**Dimensions**  
 Diameter: 52.66mm (2.07")  
 Depth: 17.76mm (0.7")



**12V DC**  
**12W**  
**CLASS 2**

**SKU: 666561425494**

## OTM-TD12-24

|                         |                               |
|-------------------------|-------------------------------|
| <b>Input Voltage:</b>   | 100-130V AC                   |
| <b>Input Current:</b>   | 0.1A                          |
| <b>Input Frequency:</b> | 50-60 Hz                      |
| <b>Output Voltage:</b>  | 24V DC                        |
| <b>Output Current:</b>  | 0.1A                          |
| <b>Max Load:</b>        | 12W                           |
| <b>Weight:</b>          | 0.044 Kg                      |
| <b>IP Rating:</b>       | IP20 (Dry and Damp Locations) |
| <b>Dimmable:</b>        | Yes (0-10V Dimming)           |
| <b>Standards:</b>       | ETL/RoHS                      |



**Dimensions**  
 Diameter: 52.66mm (2.07")  
 Depth: 17.76mm (0.7")



**24V DC**  
**12W**  
**CLASS 2**

**SKU: 666561425500**



## VBD-012-030C2DM5i1

|                         |  |
|-------------------------|--|
| <b>Input Voltage:</b>   | 100-277V AC                                    |
| <b>Input Current:</b>   | 0.5A   |
| <b>Input Frequency:</b> | 50-60 Hz                                       |
| <b>Output Voltage:</b>  | 12V DC   |
| <b>Output Current:</b>  | 2.5A   |
| <b>Max Load:</b>        | 30W  |
| <b>Power Factor:</b>    | >0.95  |
| <b>IP Rating:</b>       | IP67 (Dry, Damp and Wet Locations)             |
| <b>Dimmable:</b>        | Yes (5 in 1 Dimming-Triac/Phase/MLV/ELV/0-10V) |
| <b>Standards:</b>       | FCC/cUL/RoHS                                   |



**Dimensions**

|         |                |
|---------|----------------|
| Length: | 166mm (6.5")   |
| Width:  | 95mm (3.725")  |
| Depth:  | 40.70mm (1.6") |



**12V DC  
30W  
CLASS 2**

**SKU: 666561425999**

## VBD-024-030C2DM5i1

|                         |  |
|-------------------------|--|
| <b>Input Voltage:</b>   | 100-277V AC                                    |
| <b>Input Current:</b>   | 0.5A   |
| <b>Input Frequency:</b> | 50-60 Hz                                       |
| <b>Output Voltage:</b>  | 24V DC   |
| <b>Output Current:</b>  | 1.25A  |
| <b>Max Load:</b>        | 30W  |
| <b>Power Factor:</b>    | >0.95  |
| <b>IP Rating:</b>       | IP67 (Dry, Damp and Wet Locations)             |
| <b>Dimmable:</b>        | Yes (5 in 1 Dimming-Triac/Phase/MLV/ELV/0-10V) |
| <b>Standards:</b>       | FCC/cUL/RoHS                                   |



**Dimensions**

|         |                |
|---------|----------------|
| Length: | 166mm (6.5")   |
| Width:  | 95mm (3.725")  |
| Depth:  | 40.70mm (1.6") |



**24V DC  
30W  
CLASS 2**

**SKU: 666561426033**

## VBD-012-060C2DM5i1

|                         |  |
|-------------------------|--|
| <b>Input Voltage:</b>   | 100-277V AC                                    |
| <b>Input Current:</b>   | 0.9A   |
| <b>Input Frequency:</b> | 50-60 Hz                                       |
| <b>Output Voltage:</b>  | 12V DC   |
| <b>Output Current:</b>  | 5A   |
| <b>Max Load:</b>        | 60W  |
| <b>Power Factor:</b>    | >0.95  |
| <b>IP Rating:</b>       | IP67 (Dry, Damp and Wet Locations)             |
| <b>Dimmable:</b>        | Yes (5 in 1 Dimming-Triac/Phase/MLV/ELV/0-10V) |
| <b>Standards:</b>       | FCC/cUL/RoHS                                   |



**Dimensions**

|         |                  |
|---------|------------------|
| Length: | 189mm (7.45")    |
| Width:  | 94.57mm (3.725") |
| Depth:  | 40.80mm (1.6")   |



**12V DC  
60W  
CLASS 2**

**SKU: 666561426002**

## VBD-024-060C2DM5i1

|                         |  |
|-------------------------|--|
| <b>Input Voltage:</b>   | 100-277V AC                                    |
| <b>Input Current:</b>   | 0.9A   |
| <b>Input Frequency:</b> | 50-60 Hz                                       |
| <b>Output Voltage:</b>  | 24V DC   |
| <b>Output Current:</b>  | 2.5A   |
| <b>Max Load:</b>        | 60W  |
| <b>Power Factor:</b>    | >0.95  |
| <b>IP Rating:</b>       | IP67 (Dry, Damp and Wet Locations)             |
| <b>Dimmable:</b>        | Yes (5 in 1 Dimming-Triac/Phase/MLV/ELV/0-10V) |
| <b>Standards:</b>       | FCC/cUL/RoHS                                   |



**Dimensions**

|         |                  |
|---------|------------------|
| Length: | 189mm (7.45")    |
| Width:  | 94.57mm (3.725") |
| Depth:  | 40.80mm (1.6")   |



**24V DC  
60W  
CLASS 2**

**SKU: 666561426040**

## VBD-024-080C2DM5i1

|                         |  |
|-------------------------|--|
| <b>Input Voltage:</b>   | 100-277V AC                                    |
| <b>Input Current:</b>   | 1.15A  |
| <b>Input Frequency:</b> | 50-60 Hz                                       |
| <b>Output Voltage:</b>  | 24V DC   |
| <b>Output Current:</b>  | 3.33A  |
| <b>Max Load:</b>        | 80W  |
| <b>Power Factor:</b>    | >0.95  |
| <b>IP Rating:</b>       | IP67 (Dry, Damp and Wet Locations)             |
| <b>Dimmable:</b>        | Yes (5 in 1 Dimming-Triac/Phase/MLV/ELV/O-10V) |
| <b>Standards:</b>       | FCC/cUL/RoHS                                   |



**Dimensions**

|         |                |
|---------|----------------|
| Length: | 221mm (8.7")   |
| Width:  | 94.34mm (3.7") |
| Depth:  | 40.80mm (1.6") |



**24V DC  
80W  
CLASS 2**

**SKU: 666561426088**

## VBD-024-096C2DM5i1

|                         |  |
|-------------------------|--|
| <b>Input Voltage:</b>   | 100-277V AC                                    |
| <b>Input Current:</b>   | 1.3A   |
| <b>Input Frequency:</b> | 50-60 Hz                                       |
| <b>Output Voltage:</b>  | 24V DC   |
| <b>Output Current:</b>  | 4A   |
| <b>Max Load:</b>        | 96W  |
| <b>Power Factor:</b>    | >0.95  |
| <b>IP Rating:</b>       | IP67 (Dry, Damp and Wet Locations)             |
| <b>Dimmable:</b>        | Yes (5 in 1 Dimming-Triac/Phase/MLV/ELV/O-10V) |
| <b>Standards:</b>       | FCC/cUL/RoHS                                   |



**Dimensions**

|         |                |
|---------|----------------|
| Length: | 221mm (8.7")   |
| Width:  | 94.34mm (3.7") |
| Depth:  | 40.80mm (1.6") |



**24V DC  
96W  
CLASS 2**

**SKU: 666561426057**

## VBD-012-100DM5i1

|                         |  |
|-------------------------|--|
| <b>Input Voltage:</b>   | 100-277V AC                                    |
| <b>Input Current:</b>   | 8.33A  |
| <b>Input Frequency:</b> | 50-60 Hz                                       |
| <b>Output Voltage:</b>  | 12V DC   |
| <b>Output Current:</b>  | 3x5A   |
| <b>Max Load:</b>        | 100W   |
| <b>Power Factor:</b>    | >0.95  |
| <b>IP Rating:</b>       | IP65 (Dry, Damp and Wet Locations)             |
| <b>Dimmable:</b>        | Yes (5 in 1 Dimming-Triac/Phase/MLV/ELV/O-10V) |
| <b>Standards:</b>       | FCC/cUL/RoHS                                   |



**Dimensions**

|         |              |
|---------|--------------|
| Length: | 221mm (8.7") |
| Width:  | 94mm (3.7")  |
| Depth:  | 42mm (1.65") |



**12V DC  
100W  
TYPE HL**

**SKU: 666561428426**

## VBD-012-150DM5i1

|                         |  |
|-------------------------|--|
| <b>Input Voltage:</b>   | 100-277V AC                                    |
| <b>Input Current:</b>   | 12.5A  |
| <b>Input Frequency:</b> | 50-60 Hz                                       |
| <b>Output Voltage:</b>  | 12V DC   |
| <b>Output Current:</b>  | 2x4A   |
| <b>Max Load:</b>        | 150W   |
| <b>Power Factor:</b>    | >0.95  |
| <b>IP Rating:</b>       | IP65 (Dry, Damp and Wet Locations)             |
| <b>Dimmable:</b>        | Yes (5 in 1 Dimming-Triac/Phase/MLV/ELV/O-10V) |
| <b>Standards:</b>       | FCC/cUL/RoHS                                   |



**Dimensions**

|         |                |
|---------|----------------|
| Length: | 260mm (10.23") |
| Width:  | 104mm (4.1")   |
| Depth:  | 47mm (1.85")   |



**12V DC  
150W  
TYPE HL**

**SKU: 666561428433**

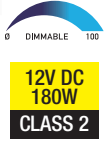
## VBD-012-180C2DM5i1

|                         |  |
|-------------------------|--|
| <b>Input Voltage:</b>   | 100-277V AC                                    |
| <b>Input Current:</b>   | 2.2A   |
| <b>Input Frequency:</b> | 50-60 Hz                                       |
| <b>Output Voltage:</b>  | 12V DC   |
| <b>Output Current:</b>  | 3x5A   |
| <b>Max Load:</b>        | 180W (3x60W)                                   |
| <b>Power Factor:</b>    | >0.95  |
| <b>IP Rating:</b>       | IP67 (Dry, Damp and Wet Locations)             |
| <b>Dimmable:</b>        | Yes (5 in 1 Dimming-Triac/Phase/MLV/ELV/0-10V) |
| <b>Standards:</b>       | FCC/cUL/RoHS                                   |



**Dimensions**

|         |                 |
|---------|-----------------|
| Length: | 278mm (10.9")   |
| Width:  | 108.65mm (4.3") |
| Depth:  | 45.60mm (1.8")  |



**SKU: 666561426019**

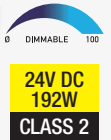
## VBD-024-192C2DM5i1

|                         |  |
|-------------------------|--|
| <b>Input Voltage:</b>   | 100-277V AC                                    |
| <b>Input Current:</b>   | 2.3A   |
| <b>Input Frequency:</b> | 50-60 Hz                                       |
| <b>Output Voltage:</b>  | 24V DC   |
| <b>Output Current:</b>  | 2x4A   |
| <b>Max Load:</b>        | 192W (2x96W)                                   |
| <b>Power Factor:</b>    | >0.95  |
| <b>IP Rating:</b>       | IP67 (Dry, Damp and Wet Locations)             |
| <b>Dimmable:</b>        | Yes (5 in 1 Dimming-Triac/Phase/MLV/ELV/0-10V) |
| <b>Standards:</b>       | FCC/cUL/RoHS                                   |



**Dimensions**

|         |                 |
|---------|-----------------|
| Length: | 278mm (10.9")   |
| Width:  | 108.65mm (4.3") |
| Depth:  | 45.60mm (1.8")  |



**SKU: 666561426064**

## VBD-012-300C2DM5i1

|                         |  |
|-------------------------|--|
| <b>Input Voltage:</b>   | 100-277V AC                                    |
| <b>Input Current:</b>   | 3.6A   |
| <b>Input Frequency:</b> | 50-60 Hz                                       |
| <b>Output Voltage:</b>  | 12V DC   |
| <b>Output Current:</b>  | 5x5A   |
| <b>Max Load:</b>        | 300W (5x60W)                                   |
| <b>Power Factor:</b>    | >0.95  |
| <b>IP Rating:</b>       | IP67 (Dry, Damp and Wet Locations)             |
| <b>Dimmable:</b>        | Yes (5 in 1 Dimming-Triac/Phase/MLV/ELV/0-10V) |
| <b>Standards:</b>       | FCC/cUL/RoHS                                   |



**Dimensions**

|         |                  |
|---------|------------------|
| Length: | 303mm (11.9")    |
| Width:  | 110.15mm (4.33") |
| Depth:  | 45.60mm (1.8")   |



**SKU: 666561426026**

## VBD-024-288C2DM5i1

|                         |  |
|-------------------------|--|
| <b>Input Voltage:</b>   | 100-277V AC                                    |
| <b>Input Current:</b>   | 3.4A   |
| <b>Input Frequency:</b> | 50-60 Hz                                       |
| <b>Output Voltage:</b>  | 24V DC   |
| <b>Output Current:</b>  | 3x4A   |
| <b>Max Load:</b>        | 288W (3x96W)                                   |
| <b>Power Factor:</b>    | >0.95  |
| <b>IP Rating:</b>       | IP67 (Dry, Damp and Wet Locations)             |
| <b>Dimmable:</b>        | Yes (5 in 1 Dimming-Triac/Phase/MLV/ELV/0-10V) |
| <b>Standards:</b>       | FCC/cUL/RoHS                                   |



**Dimensions**

|         |                  |
|---------|------------------|
| Length: | 303mm (11.9")    |
| Width:  | 110.15mm (4.33") |
| Depth:  | 45.60mm (1.8")   |



**SKU: 666561426071**

**VBD-012-030DD**

|                                  |                               |
|----------------------------------|-------------------------------|
| <b>Input Voltage:</b>            | 100-265V AC                   |
| <b>Input Current:</b>            | 0.31~0.16A                    |
| <b>Input Frequency:</b>          | 47/63 Hz                      |
| <b>Output Voltage:</b>           | 12V DC                        |
| <b>Output Regulated Current:</b> | 2.5A                          |
| <b>Output Power:</b>             | 30W max                       |
| <b>Power Factor:</b>             | >0.95                         |
| <b>IP Rating:</b>                | IP20 (Dry and Damp Locations) |
| <b>Dimmable:</b>                 | Yes                           |
| <b>Standards:</b>                | FCC/cUL/RoHS                  |



**Dimensions**

|         |               |
|---------|---------------|
| Length: | 333mm (13.1") |
| Width:  | 76mm (3")     |
| Depth:  | 41mm (1.6")   |



12V DC  
30W  
CLASS 2

SKU: 666561427290

**VBD-024-030DD**

|                                  |                               |
|----------------------------------|-------------------------------|
| <b>Input Voltage:</b>            | 100-265V AC                   |
| <b>Input Current:</b>            | 0.31~0.16A                    |
| <b>Input Frequency:</b>          | 47/63 Hz                      |
| <b>Output Voltage:</b>           | 24V DC                        |
| <b>Output Regulated Current:</b> | 1.25A                         |
| <b>Output Power:</b>             | 30W max                       |
| <b>Power Factor:</b>             | >0.95                         |
| <b>IP Rating:</b>                | IP20 (Dry and Damp Locations) |
| <b>Dimmable:</b>                 | Yes                           |
| <b>Standards:</b>                | FCC/cUL/RoHS                  |



**Dimensions**

|         |               |
|---------|---------------|
| Length: | 333mm (13.1") |
| Width:  | 76mm (3")     |
| Depth:  | 41mm (1.6")   |



24V DC  
30W  
CLASS 2

SKU: 666561427306

**VBD-012-060DD**

|                                  |                      |
|----------------------------------|----------------------|
| <b>Input Voltage:</b>            | 100-265V AC          |
| <b>Input Current:</b>            | 0.62A                |
| <b>Input Frequency:</b>          | 50/60 Hz             |
| <b>Output Voltage:</b>           | 12V DC               |
| <b>Output Regulated Current:</b> | 5.0A                 |
| <b>Output Power:</b>             | 60W max              |
| <b>Power Factor:</b>             | >0.95                |
| <b>IP Rating:</b>                | IP65 (Wet Locations) |
| <b>Dimmable:</b>                 | Yes                  |
| <b>Standards:</b>                | FCC/cUL/RoHS         |



**Dimensions**

|         |                |
|---------|----------------|
| Length: | 362mm (14.25") |
| Width:  | 78mm (3")      |
| Depth:  | 58mm (2.25")   |



12V DC  
60W  
CLASS 2

SKU: 666561427313

**VBD-024-060DD**

|                                  |                      |
|----------------------------------|----------------------|
| <b>Input Voltage:</b>            | 100-265V AC          |
| <b>Input Current:</b>            | 0.62A                |
| <b>Input Frequency:</b>          | 50/60 Hz             |
| <b>Output Voltage:</b>           | 24V DC               |
| <b>Output Regulated Current:</b> | 2.5A                 |
| <b>Output Power:</b>             | 60W max              |
| <b>Power Factor:</b>             | >0.95                |
| <b>IP Rating:</b>                | IP65 (Wet Locations) |
| <b>Dimmable:</b>                 | Yes                  |
| <b>Standards:</b>                | FCC/cUL/RoHS         |



**Dimensions**

|         |                |
|---------|----------------|
| Length: | 362mm (14.25") |
| Width:  | 78mm (3")      |
| Depth:  | 58mm (2.25")   |



24V DC  
60W  
CLASS 2

SKU: 666561427320

**VBD-012-096DD**

|                                  |                      |
|----------------------------------|----------------------|
| <b>Input Voltage:</b>            | 100-265V AC          |
| <b>Input Current:</b>            | 1.0A                 |
| <b>Input Frequency:</b>          | 50/60 Hz             |
| <b>Output Voltage:</b>           | 12V DC               |
| <b>Output Regulated Current:</b> | 8.0A                 |
| <b>Output Power:</b>             | 96W max              |
| <b>Power Factor:</b>             | >0.95                |
| <b>IP Rating:</b>                | IP65 (Wet Locations) |
| <b>Dimmable:</b>                 | Yes                  |
| <b>Standards:</b>                | FCC/cUL/RoHS         |



**Dimensions**

|         |                |
|---------|----------------|
| Length: | 362mm (14.25") |
| Width:  | 78mm (3")      |
| Depth:  | 58mm (2.25")   |



12V DC  
96W

**SKU: 666561427337**

**VBD-024-096DD**

|                                  |                      |
|----------------------------------|----------------------|
| <b>Input Voltage:</b>            | 100-265V AC          |
| <b>Input Current:</b>            | 1.0A                 |
| <b>Input Frequency:</b>          | 50/60 Hz             |
| <b>Output Voltage:</b>           | 24V DC               |
| <b>Output Regulated Current:</b> | 4.0A                 |
| <b>Output Power:</b>             | 96W max              |
| <b>Power Factor:</b>             | >0.95                |
| <b>IP Rating:</b>                | IP65 (Wet Locations) |
| <b>Dimmable:</b>                 | Yes                  |
| <b>Standards:</b>                | FCC/cUL/RoHS         |



**Dimensions**

|         |                |
|---------|----------------|
| Length: | 362mm (14.25") |
| Width:  | 78mm (3")      |
| Depth:  | 58mm (2.25")   |



24V DC  
96W  
CLASS 2

**SKU: 666561427344**

**VBD-012-150DD**

|                                  |                      |
|----------------------------------|----------------------|
| <b>Input Voltage:</b>            | 100-265V AC          |
| <b>Input Current:</b>            | 1.56A                |
| <b>Input Frequency:</b>          | 50/60 Hz             |
| <b>Output Voltage:</b>           | 12V DC               |
| <b>Output Regulated Current:</b> | 12.5A                |
| <b>Output Power:</b>             | 150W max             |
| <b>Power Factor:</b>             | >0.95                |
| <b>IP Rating:</b>                | IP65 (Wet Locations) |
| <b>Dimmable:</b>                 | Yes                  |
| <b>Standards:</b>                | FCC/cUL/RoHS         |



**Dimensions**

|         |               |
|---------|---------------|
| Length: | 394mm (15.5") |
| Width:  | 84mm (3.3")   |
| Depth:  | 60mm (2.5")   |



12V DC  
150W

**SKU: 666561427351**

**VBD-024-150DD**

|                                  |                      |
|----------------------------------|----------------------|
| <b>Input Voltage:</b>            | 100-265V AC          |
| <b>Input Current:</b>            | 1.56A                |
| <b>Input Frequency:</b>          | 50/60 Hz             |
| <b>Output Voltage:</b>           | 24V DC               |
| <b>Output Regulated Current:</b> | 6.25A                |
| <b>Output Power:</b>             | 150W max             |
| <b>Power Factor:</b>             | >0.95                |
| <b>IP Rating:</b>                | IP65 (Wet Locations) |
| <b>Dimmable:</b>                 | Yes                  |
| <b>Standards:</b>                | FCC/cUL/RoHS         |



**Dimensions**

|         |               |
|---------|---------------|
| Length: | 394mm (15.5") |
| Width:  | 84mm (3.3")   |
| Depth:  | 60mm (2.5")   |



24V DC  
150W

**SKU: 666561427368**



**VBD-024-200DD**

|                                  |                      |
|----------------------------------|----------------------|
| <b>Input Voltage:</b>            | 100-265V AC          |
| <b>Input Current:</b>            | 2.08A                |
| <b>Input Frequency:</b>          | 50/60 Hz             |
| <b>Output Voltage:</b>           | 24V DC               |
| <b>Output Regulated Current:</b> | 8.33A                |
| <b>Output Power:</b>             | 200W max             |
| <b>Power Factor:</b>             | >0.95                |
| <b>IP Rating:</b>                | IP65 (Wet Locations) |
| <b>Dimmable:</b>                 | Yes                  |
| <b>Standards:</b>                | FCC/cUL/RoHS         |



**Dimensions**  
 Length: 394mm (15.5")  
 Width: 84mm (3.3")  
 Depth: 60mm (2.5")



**24V DC  
200W**

**SKU: 666561427375**



**VBDA-012-036P1J**

|                                  |                     |
|----------------------------------|---------------------|
| <b>Input Voltage:</b>            | 100-240V AC         |
| <b>Input Current:</b>            | 0.2A                |
| <b>Input Frequency:</b>          | 47/63 Hz            |
| <b>Output Voltage:</b>           | 12V DC              |
| <b>Output Regulated Current:</b> | 3.0A                |
| <b>Output Power:</b>             | 36W max             |
| <b>Class Certifications:</b>     | Class 2             |
| <b>IP Rating:</b>                | IP20 (Indoor rated) |
| <b>Dimmable:</b>                 | No                  |
| <b>Standards:</b>                | ETL/CE              |



**Dimensions**  
 Length: 113mm (4.75")  
 Width: 50mm (1.96")  
 Depth: 32mm (1.24")



**SKU: 666561428976**

**VBDA-024-036P1J**

|                                  |                     |
|----------------------------------|---------------------|
| <b>Input Voltage:</b>            | 100-240V AC         |
| <b>Input Current:</b>            | 0.2A                |
| <b>Input Frequency:</b>          | 47/63 Hz            |
| <b>Output Voltage:</b>           | 24V DC              |
| <b>Output Regulated Current:</b> | 1.5A                |
| <b>Output Power:</b>             | 36W max             |
| <b>Class Certifications:</b>     | Class 2             |
| <b>IP Rating:</b>                | IP20 (Indoor rated) |
| <b>Dimmable:</b>                 | No                  |
| <b>Standards:</b>                | ETL/CE              |



**Dimensions**  
 Length: 113mm (4.75")  
 Width: 50mm (1.96")  
 Depth: 32mm (1.24")



**SKU: 666561428983**

**VBDA-012-060P1J**

|                                  |                     |
|----------------------------------|---------------------|
| <b>Input Voltage:</b>            | 100-240V AC         |
| <b>Input Current:</b>            | 2.0A                |
| <b>Input Frequency:</b>          | 50/60 Hz            |
| <b>Output Voltage:</b>           | 12V DC              |
| <b>Output Regulated Current:</b> | 5.0A                |
| <b>Output Power:</b>             | 60W max             |
| <b>Class Certifications:</b>     | Class 2             |
| <b>IP Rating:</b>                | IP20 (Indoor rated) |
| <b>Dimmable:</b>                 | No                  |
| <b>Standards:</b>                | ETL/CE              |



**Dimensions**  
 Length: 120mm (4.7")  
 Width: 63mm (2.5")  
 Depth: 34mm (1.3")



**SKU: 666561428990**

**VBDA-024-060P1J**

|                                  |                     |
|----------------------------------|---------------------|
| <b>Input Voltage:</b>            | 100-240V AC         |
| <b>Input Current:</b>            | 2.0A                |
| <b>Input Frequency:</b>          | 50/60 Hz            |
| <b>Output Voltage:</b>           | 24V DC              |
| <b>Output Regulated Current:</b> | 2.5A                |
| <b>Output Power:</b>             | 60W max             |
| <b>Class Certifications:</b>     | Class 2             |
| <b>IP Rating:</b>                | IP20 (Indoor rated) |
| <b>Dimmable:</b>                 | No                  |
| <b>Standards:</b>                | ETL/CE              |



**Dimensions**  
 Length: 120mm (4.7")  
 Width: 63mm (2.5")  
 Depth: 34mm (1.3")



**SKU: 666561429003**

**VBDA-012-012P1J**

|                                  |                     |
|----------------------------------|---------------------|
| <b>Input Voltage:</b>            | 100-240V AC         |
| <b>Input Current:</b>            | 0.5A                |
| <b>Input Frequency:</b>          | 47/63 Hz            |
| <b>Output Voltage:</b>           | 12V DC              |
| <b>Output Regulated Current:</b> | 1.0A                |
| <b>Output Power:</b>             | 12W max             |
| <b>Class Certifications:</b>     | Class 2             |
| <b>IP Rating:</b>                | IP20 (Indoor rated) |
| <b>Dimmable:</b>                 | No                  |
| <b>Standards:</b>                | ETL/CE              |



**Dimensions**  
 Length: 74.5mm (2.93")  
 Width: 40.5mm (1.6")  
 Depth: 30mm (1.18")



**SKU: 666561428945**

**VBDA-012-024P1J**

|                                  |                     |
|----------------------------------|---------------------|
| <b>Input Voltage:</b>            | 100-240V AC         |
| <b>Input Current:</b>            | 0.2A                |
| <b>Input Frequency:</b>          | 47/63 Hz            |
| <b>Output Voltage:</b>           | 12V DC              |
| <b>Output Regulated Current:</b> | 2.0A                |
| <b>Output Power:</b>             | 24W max             |
| <b>Class Certifications:</b>     | Class 2             |
| <b>IP Rating:</b>                | IP20 (Indoor rated) |
| <b>Dimmable:</b>                 | No                  |
| <b>Standards:</b>                | ETL/CE              |



**Dimensions**  
 Length: 83mm (3.27")  
 Width: 43.5mm (1.7")  
 Depth: 31.6mm (1.24")



**SKU: 666561428952**

**VBDA-024-024P1J**

|                                  |                     |
|----------------------------------|---------------------|
| <b>Input Voltage:</b>            | 100-240V AC         |
| <b>Input Current:</b>            | 0.2A                |
| <b>Input Frequency:</b>          | 47/63 Hz            |
| <b>Output Voltage:</b>           | 24V DC              |
| <b>Output Regulated Current:</b> | 1.0A                |
| <b>Output Power:</b>             | 24W max             |
| <b>Class Certifications:</b>     | Class 2             |
| <b>IP Rating:</b>                | IP20 (Indoor rated) |
| <b>Dimmable:</b>                 | No                  |
| <b>Standards:</b>                | ETL/CE              |



**Dimensions**  
 Length: 83mm (3.27")  
 Width: 43.5mm (1.7")  
 Depth: 31.6mm (1.24")



**SKU: 666561428969**



## VBD-012-012ND



|                         |                                    |
|-------------------------|------------------------------------|
| <b>Input Voltage:</b>   | 100-265V AC                        |
| <b>Input Frequency:</b> | 47-63 Hz                           |
| <b>Output Voltage:</b>  | 12V DC                             |
| <b>Output Current:</b>  | 1A                                 |
| <b>Max Load:</b>        | 12W                                |
| <b>Weight:</b>          | 0.05 Kg                            |
| <b>IP Rating:</b>       | IP67 (Dry, Damp and Wet Locations) |
| <b>Dimmable:</b>        | No                                 |
| <b>Standards:</b>       | CE/ETL/RoHS                        |

**Dimensions**

|         |              |
|---------|--------------|
| Length: | 75mm (2.95") |
| Width:  | 30mm (1.18") |
| Depth:  | 20mm (0.78") |



12V DC  
12W  
CLASS 2

SKU: 666561415778

## VBD-024-012ND



|                         |                                    |
|-------------------------|------------------------------------|
| <b>Input Voltage:</b>   | 100-265V AC                        |
| <b>Input Frequency:</b> | 47-63 Hz                           |
| <b>Output Voltage:</b>  | 24V DC                             |
| <b>Output Current:</b>  | 0.5A                               |
| <b>Max Load:</b>        | 12W                                |
| <b>Weight:</b>          | 0.05 Kg                            |
| <b>IP Rating:</b>       | IP67 (Dry, Damp and Wet Locations) |
| <b>Dimmable:</b>        | No                                 |
| <b>Standards:</b>       | CE/ETL/RoHS                        |

**Dimensions**

|         |              |
|---------|--------------|
| Length: | 75mm (2.95") |
| Width:  | 30mm (1.18") |
| Depth:  | 20mm (0.78") |



24V DC  
12W  
CLASS 2

SKU: 666561415846

## VBD-012-060VWSW



|                         |                                    |
|-------------------------|------------------------------------|
| <b>Input Voltage:</b>   | 100-277V AC                        |
| <b>Input Current:</b>   | 0.9A                               |
| <b>Input Frequency:</b> | 50-60 Hz                           |
| <b>Output Voltage:</b>  | 12V DC                             |
| <b>Output Current:</b>  | 5A                                 |
| <b>Max Load:</b>        | 60W                                |
| <b>Weight:</b>          | 0.376 Kg                           |
| <b>IP Rating:</b>       | IP67 (Dry, Damp and Wet Locations) |
| <b>Dimmable:</b>        | No                                 |
| <b>Standards:</b>       | CE/FCC/cUL/RoHS                    |

**Dimensions**

|         |               |
|---------|---------------|
| Length: | 282mm (11.1") |
| Width:  | 32mm (1.25")  |
| Depth:  | 20mm (0.78")  |

### Ultra Slim LED Driver



12V DC  
60W  
CLASS 2

SKU: 666561419714

## VBD-012-100VWSW



|                         |                                    |
|-------------------------|------------------------------------|
| <b>Input Voltage:</b>   | 100-277V AC                        |
| <b>Input Current:</b>   | 1.4A                               |
| <b>Input Frequency:</b> | 50-60 Hz                           |
| <b>Output Voltage:</b>  | 12V DC                             |
| <b>Output Current:</b>  | 8.33A                              |
| <b>Max Load:</b>        | 100W                               |
| <b>Weight:</b>          | 0.454 Kg                           |
| <b>IP Rating:</b>       | IP67 (Dry, Damp and Wet Locations) |
| <b>Dimmable:</b>        | No                                 |
| <b>Standards:</b>       | CE/FCC/cUL/RoHS                    |

**Dimensions**

|         |                |
|---------|----------------|
| Length: | 316mm (12.45") |
| Width:  | 32mm (1.25")   |
| Depth:  | 23mm (0.9")    |

### Ultra Slim LED Driver



12V DC  
100W

SKU: 666561419738

# VEROBOARD CV LED DRIVERS

## Non-Dimmable

### VBD-024-060VWSW

|                         |                                    |
|-------------------------|------------------------------------|
| <b>Input Voltage:</b>   | 100-277V AC                        |
| <b>Input Current:</b>   | 0.9A                               |
| <b>Input Frequency:</b> | 50-60 Hz                           |
| <b>Output Voltage:</b>  | 24V DC                             |
| <b>Output Current:</b>  | 2.5A                               |
| <b>Max Load:</b>        | 60W                                |
| <b>Weight:</b>          | 0.390 Kg                           |
| <b>IP Rating:</b>       | IP67 (Dry, Damp and Wet Locations) |
| <b>Dimmable:</b>        | No                                 |
| <b>Standards:</b>       | CE/FCC/cUL/RoHS                    |



**Dimensions**

|         |               |
|---------|---------------|
| Length: | 282mm (11.1") |
| Width:  | 32mm (1.25")  |
| Depth:  | 20mm (0.78")  |

### Ultra Slim LED Driver



24V DC  
60W  
CLASS 2

SKU: 666561419721

### VBD-024-096VWSW

|                         |                                    |
|-------------------------|------------------------------------|
| <b>Input Voltage:</b>   | 100-277V AC                        |
| <b>Input Current:</b>   | 1.3A                               |
| <b>Input Frequency:</b> | 50-60 Hz                           |
| <b>Output Voltage:</b>  | 24V DC                             |
| <b>Output Current:</b>  | 4A                                 |
| <b>Max Load:</b>        | 96W                                |
| <b>Weight:</b>          | 0.486 Kg                           |
| <b>IP Rating:</b>       | IP67 (Dry, Damp and Wet Locations) |
| <b>Dimmable:</b>        | No                                 |
| <b>Standards:</b>       | CE/FCC/cUL/RoHS                    |



**Dimensions**

|         |                |
|---------|----------------|
| Length: | 316mm (12.45") |
| Width:  | 32mm (1.25")   |
| Depth:  | 23mm (0.9")    |

### Ultra Slim LED Driver



24V DC  
96W  
CLASS 2

SKU: 666561419745

# VEROBOARD CC LED DRIVERS

## Triac Dimming

### OTM-TD60

|                         |                        |
|-------------------------|------------------------|
| <b>Input Voltage:</b>   | 90-130V AC             |
| <b>Input Current:</b>   | 0.7A                   |
| <b>Input Frequency:</b> | 48-62 Hz               |
| <b>Output Voltage:</b>  | 42-48V DC              |
| <b>Output Current:</b>  | 1000mA                 |
| <b>Max Load:</b>        | 50W                    |
| <b>Wiring/Housing:</b>  | Hardwire               |
| <b>IP Rating:</b>       | IP20 (Indoor use Only) |
| <b>Dimmable:</b>        | Yes (Triac Dimming)    |
| <b>Standards:</b>       | ETL                    |



**Dimensions**

|         |                 |
|---------|-----------------|
| Length: | 133mm (5.23")   |
| Width:  | 47.56mm (1.87") |
| Depth:  | 29.43mm (1.16") |



0 DIMMABLE 100  
42-48V DC  
1000mA  
CLASS 2

SKU: 666561428617

### OTM-TD60

|                         |                        |
|-------------------------|------------------------|
| <b>Input Voltage:</b>   | 90-130V AC             |
| <b>Input Current:</b>   | 0.7A                   |
| <b>Input Frequency:</b> | 48-62 Hz               |
| <b>Output Voltage:</b>  | 20-28V DC              |
| <b>Output Current:</b>  | 2000mA                 |
| <b>Max Load:</b>        | 50W                    |
| <b>Wiring/Housing:</b>  | Hardwire               |
| <b>IP Rating:</b>       | IP20 (Indoor use Only) |
| <b>Dimmable:</b>        | Yes (Triac Dimming)    |
| <b>Standards:</b>       | ETL                    |



**Dimensions**

|         |                 |
|---------|-----------------|
| Length: | 133mm (5.23")   |
| Width:  | 47.56mm (1.87") |
| Depth:  | 29.43mm (1.16") |



0 DIMMABLE 100  
20-28V DC  
2000mA  
CLASS 2

SKU: 666561428624

**OTM-TD203500-740-38**

**Input Voltage:** 90-130V AC  
**Input Current:** 0.9A  
**Input Frequency:** 50-60 Hz  
**Output Voltage:** 42-54V DC  
**Output Current:** 740mA  
**Max Load:** 38W  
**Wiring/Housing:** Hardwire  
**IP Rating:** IP20 (Dry and Damp Locations)  
**Dimmable:** Yes (Triac Dimming)  
**Standards:** CE/ETL/RoHS



**Dimensions**  
 Length: 139.63mm (5.5")  
 Width: 47.25mm (1.86")  
 Depth: 28.86mm (1.13")



42-54V DC  
740mA  
CLASS 2

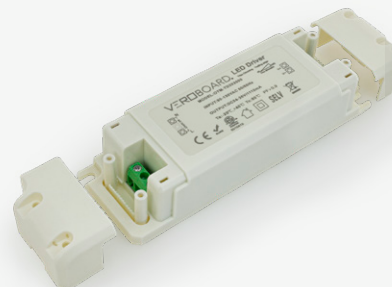
**SKU: 666561426484**

**OTM-TD203500-1110-38**

**Input Voltage:** 90-130V AC  
**Input Current:** 0.9A  
**Input Frequency:** 50-60 Hz  
**Output Voltage:** 24-36V DC  
**Output Current:** 1110mA  
**Max Load:** 38W  
**Wiring/Housing:** Hardwire  
**IP Rating:** IP20 (Dry and Damp Locations)  
**Dimmable:** Yes (Triac Dimming)  
**Standards:** CE/ETL/RoHS



**Dimensions**  
 Length: 139.63mm (5.5")  
 Width: 47.25mm (1.86")  
 Depth: 28.86mm (1.13")



24-36V DC  
1110mA  
CLASS 2

**SKU: 666561426477**

**OTM-TD202800-830-28**

**Input Voltage:** 90-130V AC  
**Input Current:** 0.9A  
**Input Frequency:** 50-60 Hz  
**Output Voltage:** 25-36V DC  
**Output Current:** 830mA  
**Max Load:** 28W  
**Wiring/Housing:** Hardwire  
**IP Rating:** IP20 (Dry and Damp Locations)  
**Dimmable:** Yes (Triac Dimming)  
**Standards:** CE/ETL/RoHS



**Dimensions**  
 Length: 139.63mm (5.5")  
 Width: 47.25mm (1.86")  
 Depth: 28.86mm (1.13")



25-36V DC  
830mA  
CLASS 2

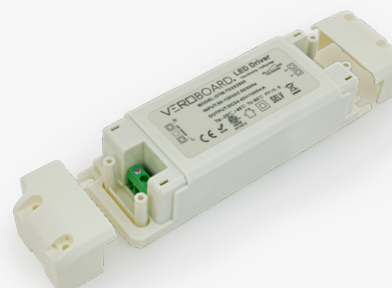
**SKU: 666561426521**

**OTM-TD202800-1000-28**

**Input Voltage:** 90-130V AC  
**Input Current:** 0.9A  
**Input Frequency:** 50-60 Hz  
**Output Voltage:** 24-42V DC  
**Output Current:** 1000mA  
**Max Load:** 28W  
**Wiring/Housing:** Hardwire  
**IP Rating:** IP20 (Dry and Damp Locations)  
**Dimmable:** Yes (Triac Dimming)  
**Standards:** CE/ETL/RoHS



**Dimensions**  
 Length: 139.63mm (5.5")  
 Width: 47.25mm (1.86")  
 Depth: 28.86mm (1.13")



24-42V DC  
1000mA  
CLASS 2

**SKU: 666561426491**

**OTM-TD202800-720-28**

**Input Voltage:** 90-130V AC  
**Input Current:** 0.9A  
**Input Frequency:** 50-60 Hz  
**Output Voltage:** 36-42V DC  
**Output Current:** 720mA  
**Max Load:** 28W  
**Wiring/Housing:** Hardwire  
**IP Rating:** IP20 (Dry and Damp Locations)  
**Dimmable:** Yes (Triac Dimming)  
**Standards:** CE/ETL/RoHS



**Dimensions**  
 Length: 139.63mm (5.5")  
 Width: 47.25mm (1.86")  
 Depth: 28.86mm (1.13")



36-42V DC  
720mA  
CLASS 2

**SKU: 666561426569**

**OTM-TD203100-700-30**

|                         |                               |
|-------------------------|-------------------------------|
| <b>Input Voltage:</b>   | 90-130V AC                    |
| <b>Input Current:</b>   | 0.9A                          |
| <b>Input Frequency:</b> | 50-60 Hz                      |
| <b>Output Voltage:</b>  | 27-42V DC                     |
| <b>Output Current:</b>  | 700mA                         |
| <b>Max Load:</b>        | 30W                           |
| <b>Wiring/Housing:</b>  | Hardwire                      |
| <b>IP Rating:</b>       | IP20 (Dry and Damp Locations) |
| <b>Dimmable:</b>        | Yes (Triac Dimming)           |
| <b>Standards:</b>       | CE/ETL/RoHS                   |



**Dimensions**

|         |                 |
|---------|-----------------|
| Length: | 139.63mm (5.5") |
| Width:  | 47.25mm (1.86") |
| Depth:  | 28.86mm (1.13") |



27-42V DC  
700mA  
CLASS 2

**SKU: 666561426514**

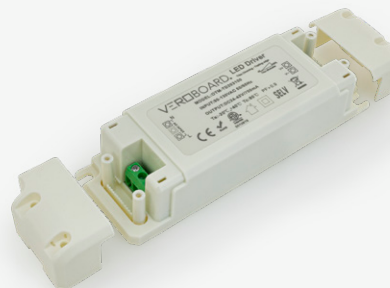
**OTM-TD203100-700**

|                         |                               |
|-------------------------|-------------------------------|
| <b>Input Voltage:</b>   | 90-130V AC                    |
| <b>Input Current:</b>   | 0.9A                          |
| <b>Input Frequency:</b> | 50-60 Hz                      |
| <b>Output Voltage:</b>  | 24-42V DC                     |
| <b>Output Current:</b>  | 700mA                         |
| <b>Max Load:</b>        | 30W                           |
| <b>Wiring/Housing:</b>  | Hardwire                      |
| <b>IP Rating:</b>       | IP20 (Dry and Damp Locations) |
| <b>Dimmable:</b>        | Yes (Triac Dimming)           |
| <b>Standards:</b>       | CE/ETL/RoHS                   |



**Dimensions**

|         |                 |
|---------|-----------------|
| Length: | 139.63mm (5.5") |
| Width:  | 47.25mm (1.86") |
| Depth:  | 28.86mm (1.13") |



24-42V DC  
700mA  
CLASS 2

**SKU: 666561426576**

**OTM-TD203100-830-30**

|                         |                               |
|-------------------------|-------------------------------|
| <b>Input Voltage:</b>   | 90-130V AC                    |
| <b>Input Current:</b>   | 0.9A                          |
| <b>Input Frequency:</b> | 50-60 Hz                      |
| <b>Output Voltage:</b>  | 24-42V DC                     |
| <b>Output Current:</b>  | 830mA                         |
| <b>Max Load:</b>        | 30W                           |
| <b>Wiring/Housing:</b>  | Hardwire                      |
| <b>IP Rating:</b>       | IP20 (Dry and Damp Locations) |
| <b>Dimmable:</b>        | Yes (Triac Dimming)           |
| <b>Standards:</b>       | CE/ETL/RoHS                   |



**Dimensions**

|         |                 |
|---------|-----------------|
| Length: | 139.63mm (5.5") |
| Width:  | 47.25mm (1.86") |
| Depth:  | 28.86mm (1.13") |



24-42V DC  
830mA  
CLASS 2

**SKU: 666561426545**

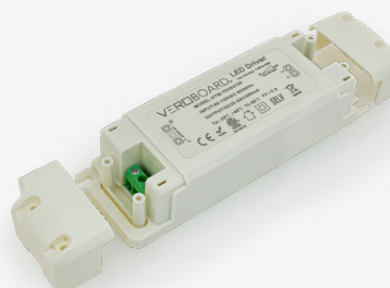
**OTM-TD203100-550-30**

|                         |                               |
|-------------------------|-------------------------------|
| <b>Input Voltage:</b>   | 90-130V AC                    |
| <b>Input Current:</b>   | 0.9A                          |
| <b>Input Frequency:</b> | 50-60 Hz                      |
| <b>Output Voltage:</b>  | 32-54V DC                     |
| <b>Output Current:</b>  | 550mA                         |
| <b>Max Load:</b>        | 30W                           |
| <b>Wiring/Housing:</b>  | Hardwire                      |
| <b>IP Rating:</b>       | IP20 (Dry and Damp Locations) |
| <b>Dimmable:</b>        | Yes (Triac Dimming)           |
| <b>Standards:</b>       | CE/ETL/RoHS                   |



**Dimensions**

|         |                 |
|---------|-----------------|
| Length: | 139.63mm (5.5") |
| Width:  | 47.25mm (1.86") |
| Depth:  | 28.86mm (1.13") |



32-54V DC  
550mA  
CLASS 2

**SKU: 666561426538**

**OTM-TD203500-1200-38**

|                         |                               |
|-------------------------|-------------------------------|
| <b>Input Voltage:</b>   | 90-130V AC                    |
| <b>Input Current:</b>   | 0.9A                          |
| <b>Input Frequency:</b> | 50-60 Hz                      |
| <b>Output Voltage:</b>  | 24-36V DC                     |
| <b>Output Current:</b>  | 1200mA                        |
| <b>Max Load:</b>        | 38W                           |
| <b>Wiring/Housing:</b>  | Hardwire                      |
| <b>IP Rating:</b>       | IP20 (Dry and Damp Locations) |
| <b>Dimmable:</b>        | Yes (Triac Dimming)           |
| <b>Standards:</b>       | CE/ETL/RoHS                   |



**Dimensions**

|         |                 |
|---------|-----------------|
| Length: | 139.63mm (5.5") |
| Width:  | 47.25mm (1.86") |
| Depth:  | 28.86mm (1.13") |



24-36V DC  
1200mA  
CLASS 2

**SKU: 666561426507**

**OTM-TD202800-560-28**

|                         |                               |
|-------------------------|-------------------------------|
| <b>Input Voltage:</b>   | 90-130V AC                    |
| <b>Input Current:</b>   | 0.9A                          |
| <b>Input Frequency:</b> | 50-60 Hz                      |
| <b>Output Voltage:</b>  | 42-54V DC                     |
| <b>Output Current:</b>  | 560mA                         |
| <b>Max Load:</b>        | 28W                           |
| <b>Wiring/Housing:</b>  | Hardwire                      |
| <b>IP Rating:</b>       | IP20 (Dry and Damp Locations) |
| <b>Dimmable:</b>        | Yes (Triac Dimming)           |
| <b>Standards:</b>       | CE/ETL/RoHS                   |



**Dimensions**

|         |                 |
|---------|-----------------|
| Length: | 139.63mm (5.5") |
| Width:  | 47.25mm (1.86") |
| Depth:  | 28.86mm (1.13") |



42-54V DC  
560mA  
CLASS 2

**SKU: 666561426552**

**OTM-TD203100-600-25**

|                         |                               |
|-------------------------|-------------------------------|
| <b>Input Voltage:</b>   | 90-130V AC                    |
| <b>Input Current:</b>   | 0.9A                          |
| <b>Input Frequency:</b> | 50-60 Hz                      |
| <b>Output Voltage:</b>  | 30-42V DC                     |
| <b>Output Current:</b>  | 600mA                         |
| <b>Max Load:</b>        | 25W                           |
| <b>Wiring/Housing:</b>  | Hardwire                      |
| <b>IP Rating:</b>       | IP20 (Dry and Damp Locations) |
| <b>Dimmable:</b>        | Yes (Triac Dimming)           |
| <b>Standards:</b>       | CE/ETL/RoHS                   |



**Dimensions**

|         |                  |
|---------|------------------|
| Length: | 130.41mm (5.13") |
| Width:  | 43.18mm (1.7")   |
| Depth:  | 21.25mm (0.83")  |



30-42V DC  
600mA  
CLASS 2

**SKU: 666561426392**

**OTM-TD253100-550-20**

|                         |                               |
|-------------------------|-------------------------------|
| <b>Input Voltage:</b>   | 90-130V AC                    |
| <b>Input Current:</b>   | 0.9A                          |
| <b>Input Frequency:</b> | 50-60 Hz                      |
| <b>Output Voltage:</b>  | 22-42V DC                     |
| <b>Output Current:</b>  | 550mA                         |
| <b>Max Load:</b>        | 20W                           |
| <b>Wiring/Housing:</b>  | Hardwire                      |
| <b>IP Rating:</b>       | IP20 (Dry and Damp Locations) |
| <b>Dimmable:</b>        | Yes (Triac Dimming)           |
| <b>Standards:</b>       | CE/ETL/RoHS                   |



**Dimensions**

|         |                  |
|---------|------------------|
| Length: | 130.41mm (5.13") |
| Width:  | 43.18mm (1.7")   |
| Depth:  | 21.25mm (0.83")  |



22-42V DC  
550mA  
CLASS 2

**SKU: 666561426385**

**OTM-TD252500-280-38**

|                         |                               |
|-------------------------|-------------------------------|
| <b>Input Voltage:</b>   | 90-130V AC                    |
| <b>Input Current:</b>   | 0.9A                          |
| <b>Input Frequency:</b> | 50-60 Hz                      |
| <b>Output Voltage:</b>  | 24-48V DC                     |
| <b>Output Current:</b>  | 280mA                         |
| <b>Max Load:</b>        | 38W                           |
| <b>Wiring/Housing:</b>  | Hardwire                      |
| <b>IP Rating:</b>       | IP20 (Dry and Damp Locations) |
| <b>Dimmable:</b>        | Yes (Triac Dimming)           |
| <b>Standards:</b>       | CE/ETL/RoHS                   |



**Dimensions**

|         |                |
|---------|----------------|
| Length: | 88mm (3.45")   |
| Width:  | 38mm (1.5")    |
| Depth:  | 20.75mm (0.8") |



24-48V DC  
280mA  
CLASS 2

**SKU: 666561426408**

**OTM-TD252500-250-12**

|                         |                               |
|-------------------------|-------------------------------|
| <b>Input Voltage:</b>   | 90-130V AC                    |
| <b>Input Current:</b>   | 0.9A                          |
| <b>Input Frequency:</b> | 50-60 Hz                      |
| <b>Output Voltage:</b>  | 24-48V DC                     |
| <b>Output Current:</b>  | 250mA                         |
| <b>Max Load:</b>        | 12W                           |
| <b>Wiring/Housing:</b>  | Hardwire                      |
| <b>IP Rating:</b>       | IP20 (Dry and Damp Locations) |
| <b>Dimmable:</b>        | Yes (Triac Dimming)           |
| <b>Standards:</b>       | CE/ETL/RoHS                   |



**Dimensions**

|         |                |
|---------|----------------|
| Length: | 88mm (3.45")   |
| Width:  | 38mm (1.5")    |
| Depth:  | 20.75mm (0.8") |



24-48V DC  
250mA  
CLASS 2

**SKU: 666561426422**



**OTM-TD252800-480-18**

|                         |                               |
|-------------------------|-------------------------------|
| <b>Input Voltage:</b>   | 90-130V AC                    |
| <b>Input Current:</b>   | 0.9A                          |
| <b>Input Frequency:</b> | 50-60 Hz                      |
| <b>Output Voltage:</b>  | 24-30V DC                     |
| <b>Output Current:</b>  | 480mA                         |
| <b>Max Load:</b>        | 18W                           |
| <b>Wiring/Housing:</b>  | Hardwire                      |
| <b>IP Rating:</b>       | IP20 (Dry and Damp Locations) |
| <b>Dimmable:</b>        | Yes (Triac Dimming)           |
| <b>Standards:</b>       | CE/ETL/RoHS                   |



**Dimensions**

|         |                |
|---------|----------------|
| Length: | 88mm (3.45")   |
| Width:  | 38mm (1.5")    |
| Depth:  | 20.75mm (0.8") |



24-30V DC  
480mA  
CLASS 2

**SKU: 666561426415**

**OTM-TD253100-450-20**

|                         |                               |
|-------------------------|-------------------------------|
| <b>Input Voltage:</b>   | 90-130V AC                    |
| <b>Input Current:</b>   | 0.9A                          |
| <b>Input Frequency:</b> | 50-60 Hz                      |
| <b>Output Voltage:</b>  | 27-45V DC                     |
| <b>Output Current:</b>  | 450mA                         |
| <b>Max Load:</b>        | 20W                           |
| <b>Wiring/Housing:</b>  | Hardwire                      |
| <b>IP Rating:</b>       | IP20 (Dry and Damp Locations) |
| <b>Dimmable:</b>        | Yes (Triac Dimming)           |
| <b>Standards:</b>       | CE/ETL/RoHS                   |



**Dimensions**

|         |                |
|---------|----------------|
| Length: | 88mm (3.45")   |
| Width:  | 38mm (1.5")    |
| Depth:  | 20.75mm (0.8") |



27-45V DC  
450mA  
CLASS 2

**SKU: 666561426453**

**OTM-TD253100-370-20**

|                         |                               |
|-------------------------|-------------------------------|
| <b>Input Voltage:</b>   | 90-130V AC                    |
| <b>Input Current:</b>   | 0.9A                          |
| <b>Input Frequency:</b> | 50-60 Hz                      |
| <b>Output Voltage:</b>  | 32-54V DC                     |
| <b>Output Current:</b>  | 370mA                         |
| <b>Max Load:</b>        | 20W                           |
| <b>Wiring/Housing:</b>  | Hardwire                      |
| <b>IP Rating:</b>       | IP20 (Dry and Damp Locations) |
| <b>Dimmable:</b>        | Yes (Triac Dimming)           |
| <b>Standards:</b>       | CE/ETL/RoHS                   |



**Dimensions**

|         |                |
|---------|----------------|
| Length: | 88mm (3.45")   |
| Width:  | 38mm (1.5")    |
| Depth:  | 20.75mm (0.8") |



32-54V DC  
370mA  
CLASS 2

**SKU: 666561426446**

**OTM-TD252800-430-18**

|                         |                               |
|-------------------------|-------------------------------|
| <b>Input Voltage:</b>   | 90-130V AC                    |
| <b>Input Current:</b>   | 0.9A                          |
| <b>Input Frequency:</b> | 50-60 Hz                      |
| <b>Output Voltage:</b>  | 36-42V DC                     |
| <b>Output Current:</b>  | 430mA                         |
| <b>Max Load:</b>        | 18W                           |
| <b>Wiring/Housing:</b>  | Hardwire                      |
| <b>IP Rating:</b>       | IP20 (Dry and Damp Locations) |
| <b>Dimmable:</b>        | Yes (Triac Dimming)           |
| <b>Standards:</b>       | CE/ETL/RoHS                   |



**Dimensions**

|         |                |
|---------|----------------|
| Length: | 88mm (3.45")   |
| Width:  | 38mm (1.5")    |
| Depth:  | 20.75mm (0.8") |



36-42V DC  
430mA  
CLASS 2

**SKU: 666561426439**

**OTM-TD253100-350-20**

|                         |                               |
|-------------------------|-------------------------------|
| <b>Input Voltage:</b>   | 90-130V AC                    |
| <b>Input Current:</b>   | 0.9A                          |
| <b>Input Frequency:</b> | 50-60 Hz                      |
| <b>Output Voltage:</b>  | 35-56V DC                     |
| <b>Output Current:</b>  | 350mA                         |
| <b>Max Load:</b>        | 20W                           |
| <b>Wiring/Housing:</b>  | Hardwire                      |
| <b>IP Rating:</b>       | IP20 (Dry and Damp Locations) |
| <b>Dimmable:</b>        | Yes (Triac Dimming)           |
| <b>Standards:</b>       | CE/ETL/RoHS                   |



**Dimensions**

|         |                |
|---------|----------------|
| Length: | 88mm (3.45")   |
| Width:  | 38mm (1.5")    |
| Depth:  | 20.75mm (0.8") |



35-56V DC  
350mA  
CLASS 2

**SKU: 666561426460**