

PRODUCT
CATALOG
2024

VEROBOARD®

CANADIAN-BASED LIGHTING MANUFACTURER

RETROFIT AND LINEAR

CABINET LIGHTS

Surface Mounts
Flush Mounts
Linkables
Squares
Linears



Available various color temperatures
for different design styles.

AMBER WHITE	SOFT WHITE	WARM WHITE	MID-WARM WHITE	NATURAL WHITE	DAY LIGHT
2400K	2700K	3000K	3500K	4000K	5000K

Veroboard's LED cabinet lights are assembled in Canada. They come in diverse color finishes and numerous color temperatures. They are admirable lighting for any task, whether it's meal prepping in the kitchen, lighting up bookshelves, making display cabinets, or customized projects.



PART NUMBER BUILDER / ORDERING GUIDE
 Example part number: **VBUN-S50-12V-GOLD-2400K**

MODEL	FIXTURE COLOR	COLOR TEMPERATURE	
VBUN-S50-12V		2400K	3500K
	Black	2700K	4000K
	Gold	3000K	5000K
	Brushed Nickel		

Square Ultra Thin Surface Mount Cabinet Light 12V-5W (Silver Grey)

Model No.: VBUN-S50-12V
LED Type: 12 x 5630 SMD
Voltage: 12V DC
Wattage: 5W
Beam Angle: 120°
Luminous Flux: 400-450Lm
Material: Aluminum
Finish Color: Silver Grey
IP Rating: IP20 (Dry and Damp Locations)
Ra: CRI>90
Dimmable: Yes



SKU:
666561424534



SKU:
666561424541



SKU:
666561424558



SKU:
666561424565



SKU:
666561424572



SKU:
666561424589



Dimensions
 Length: 79mm (3.11")
 Width: 79mm (3.11")
 Depth: 4mm (0.16")



PART NUMBER BUILDER / ORDERING GUIDE
 Example part number: **VBUN-S50-12V-GOLD-2400K**

MODEL	FIXTURE COLOR	COLOR TEMPERATURE	
VBUN-S50-12V		2400K	3500K
	Black	2700K	4000K
	Gold	3000K	5000K
	Brushed Nickel		

Square Ultra Thin Surface Mount Cabinet Light 12V-5W (Gold)

Model No.: VBUN-S50-12V
LED Type: 12 x 5630 SMD
Voltage: 12V DC
Wattage: 5W
Beam Angle: 120°
Luminous Flux: 400-450Lm
Material: Aluminum
Finish Color: Gold
IP Rating: IP20 (Dry and Damp Locations)
Ra: CRI>90
Dimmable: Yes



SKU:
666561424473



SKU:
666561424480



SKU:
666561424497



SKU:
666561424503



SKU:
666561424510



SKU:
666561424527



Dimensions
 Length: 79mm (3.11")
 Width: 79mm (3.11")
 Depth: 4mm (0.16")



PART NUMBER BUILDER / ORDERING GUIDE
 Example part number: **VBUN-S50-12V-GOLD-2400K**

MODEL	FIXTURE COLOR	COLOR TEMPERATURE	
VBUN-S50-12V		2400K	3500K
	Black	2700K	4000K
	Gold	3000K	5000K
	Brushed Nickel		

Square Ultra Thin Surface Mount Cabinet Light 12V-5W (Black)

Model No.: VBUN-S50-12V
LED Type: 12 x 5630 SMD
Voltage: 12V DC
Wattage: 5W
Beam Angle: 120°
Luminous Flux: 400-450Lm
Material: Aluminum
Finish Color: Black
IP Rating: IP20 (Dry and Damp Locations)
Ra: CRI>90
Dimmable: Yes



SKU:
666561424411



SKU:
666561424428



SKU:
666561424435



SKU:
666561424442



SKU:
666561424459



SKU:
666561424466




Dimensions
 Length: 79mm (3.11")
 Width: 79mm (3.11")
 Depth: 4mm (0.16")



PART NUMBER BUILDER / ORDERING GUIDE				
Example part number: VBUN-R25-12V-RED-2400K				
MODEL	FIXTURE COLOR		COLOR TEMPERATURE	
VBUN-R25-12V				
	White	Black	2400K	3500K
	Silver Grey	Gold	2700K	4000K
	Red	Blue	3000K	5000K

Cabinet Light 12V-2.5W (Matt White)

Model No.:	VBUN-R25-12V	
Voltage:	12V DC	
Wattage:	2.5W	
LED Type:	3 x 5730 SMD	
Luminous Flux:	200-240Lm	
Beam Angle:	120°	
Material:	Aluminum	
Finish Color:	White	
IP Rating:	IP20 (Dry and damp locations)	
Ra:	CRI>90	
Dimmable:	Yes	



Surface or Flush Mount Installation Possibility



Diameter
62mm (2.43")

Hole Cut Size for Flush Mount
56mm (2.20")



SKU: 666561420635

SKU: 666561420642

SKU: 666561420659


SKU: 666561420666

SKU: 666561420673

SKU: 666561420680

PART NUMBER BUILDER / ORDERING GUIDE				
Example part number: VBUN-R25-12V-RED-2400K				
MODEL	FIXTURE COLOR		COLOR TEMPERATURE	
VBUN-R25-12V				
	White	Black	2400K	3500K
	Silver Grey	Gold	2700K	4000K
	Red	Blue	3000K	5000K

Cabinet Light 12V-2.5W (Matt Silver)

Model No.:	VBUN-R25-12V	
Voltage:	12V DC	
Wattage:	2.5W	
LED Type:	3 x 5730 SMD	
Luminous Flux:	200-240Lm	
Beam Angle:	120°	
Material:	Aluminum	
Finish Color:	Silver Grey	
IP Rating:	IP20 (Dry and damp locations)	
Ra:	CRI>90	
Dimmable:	Yes	



Surface or Flush Mount Installation Possibility



Diameter
62mm (2.43")

Hole Cut Size for Flush Mount
56mm (2.20")



SKU: 666561420574

SKU: 666561420581

SKU: 666561420598

SKU: 666561420604

SKU: 666561420611

SKU: 666561420628

PART NUMBER BUILDER / ORDERING GUIDE		
Example part number: VBUN-R25-12V-RED-2400K		
MODEL	FIXTURE COLOR	COLOR TEMPERATURE
VBUN-R25-12V	-	-
	White	2400K
	Silver Grey	2700K
	Black	3000K
	Gold	3500K
	Red	4000K
	Blue	5000K

Cabinet Light 12V-2.5W (Matt Black)

Model No.:	VBUN-R25-12V
Voltage:	12V DC
Wattage:	2.5W
LED Type:	3 x 5730 SMD
Luminous Flux:	200-240Lm
Beam Angle:	120°
Material:	Aluminum
Finish Color:	Black
IP Rating:	IP20 (Dry and damp locations)
Ra:	CRI>90
Dimmable:	Yes



Diameter
62mm (2.43")

Hole Cut Size for Flush Mount
56mm (2.20")

Surface or Flush Mount Installation Possibility



- SKU: 666561420697**
- SKU: 666561420703**
- SKU: 666561420710**
- SKU: 666561420727**
- SKU: 666561420734**
- SKU: 666561420741**

PART NUMBER BUILDER / ORDERING GUIDE		
Example part number: VBUN-R25-12V-RED-2400K		
MODEL	FIXTURE COLOR	COLOR TEMPERATURE
VBUN-R25-12V	-	-
	White	2400K
	Silver Grey	2700K
	Black	3000K
	Gold	3500K
	Red	4000K
	Blue	5000K

Cabinet Light 12V-2.5W (Matt Gold)

Model No.:	VBUN-R25-12V
Voltage:	12V DC
Wattage:	2.5W
LED Type:	3 x 5730 SMD
Luminous Flux:	200-240Lm
Beam Angle:	120°
Material:	Aluminum
Finish Color:	Gold
IP Rating:	IP20 (Dry and damp locations)
Ra:	CRI>90
Dimmable:	Yes



Diameter
62mm (2.43")

Hole Cut Size for Flush Mount
56mm (2.20")

Surface or Flush Mount Installation Possibility



- SKU: 666561424350**
- SKU: 666561424367**
- SKU: 666561424374**
- SKU: 666561424381**
- SKU: 666561424398**
- SKU: 666561424404**

PART NUMBER BUILDER / ORDERING GUIDE				
Example part number: VBUN-R25-12V-RED-2400K				
MODEL	FIXTURE COLOR		COLOR TEMPERATURE	
VBUN-R25-12V	-		-	
	White	Black	2400K	3500K
	Silver Grey	Gold	2700K	4000K
	Red	Blue	3000K	5000K

Cabinet Light 12V-2.5W (Matt Red)

Model No.:	VBUN-R25-12V
Voltage:	12V DC
Wattage:	2.5W
LED Type:	3 x 5730 SMD
Luminous Flux:	200-240Lm
Beam Angle:	120°
Material:	Aluminum
Finish Color:	Red
IP Rating:	IP20 (Dry and damp locations)
Ra:	CRI>90
Dimmable:	Yes

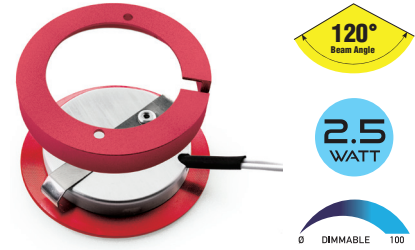


Surface or Flush Mount Installation Possibility



Diameter
62mm (2.43")

Hole Cut Size for Flush Mount
56mm (2.20")



- | | | | | | |
|-------------------|-------------------|-------------------|-------------------|-------------------|-------------------|
| | | | | | |
| SKU: 666561424237 | SKU: 666561424244 | SKU: 666561424251 | SKU: 666561424268 | SKU: 666561424275 | SKU: 666561424282 |

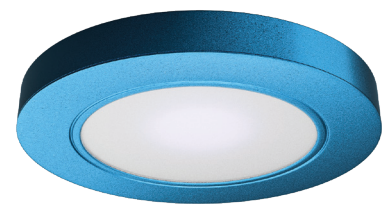
PART NUMBER BUILDER / ORDERING GUIDE				
Example part number: VBUN-R25-12V-RED-2400K				
MODEL	FIXTURE COLOR		COLOR TEMPERATURE	
VBUN-R25-12V	-		-	
	White	Black	2400K	3500K
	Silver Grey	Gold	2700K	4000K
	Red	Blue	3000K	5000K

Cabinet Light 12V-2.5W (Matt Blue)

Model No.:	VBUN-R25-12V
Voltage:	12V DC
Wattage:	2.5W
LED Type:	3 x 5730 SMD
Luminous Flux:	200-240Lm
Beam Angle:	120°
Material:	Aluminum
Finish Color:	Blue
IP Rating:	IP20 (Dry and damp locations)
Ra:	CRI>90
Dimmable:	Yes

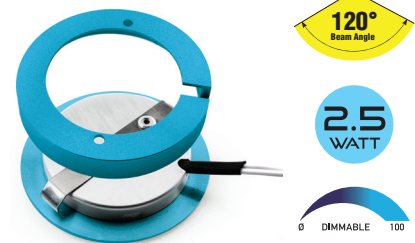


Surface or Flush Mount Installation Possibility



Diameter
62mm (2.43")

Hole Cut Size for Flush Mount
56mm (2.20")



- | | | | | | |
|-------------------|-------------------|-------------------|-------------------|-------------------|-------------------|
| | | | | | |
| SKU: 666561424299 | SKU: 666561424305 | SKU: 666561424312 | SKU: 666561424329 | SKU: 666561424336 | SKU: 666561424343 |



PART NUMBER BUILDER / ORDERING GUIDE
 Example part number: **VBUN-2R25-12V-SHINY GOLD-2400K**

MODEL	FIXTURE COLOR	COLOR TEMPERATURE	
VBUN-2R25-12V			
	Shiny Gold	Black	2400K
	Shiny Silver	White	2700K
	Chrome		3000K
			3500K
			4000K
			5000K

Cabinet Light 12V-2.5W (Shiny Gold)

Model No.:	VBUN-2R25-12V	
Voltage:	12V DC	
Wattage:	2.5W	
LED Type:	3 x 5730 SMD	
Luminous Flux:	200-240Lm	
Beam Angle:	120°	
Material:	Aluminum	
Finish Color:	Shiny Gold	
IP Rating:	IP20 (Dry and damp locations)	
Ra:	CRI>90	
Dimmable:	Yes	

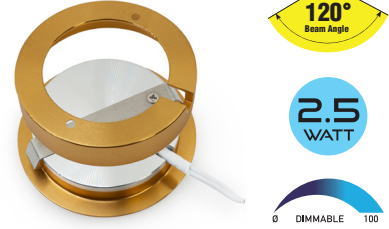


Surface or Flush Mount Installation Possibility



Diameter
62mm (2.43")

Hole Cut Size for Flush Mount
56mm (2.20")



SKU: 666561428853 SKU: 666561428860 SKU: 666561428877 SKU: 666561428884 SKU: 666561428891 SKU: 666561428907

PART NUMBER BUILDER / ORDERING GUIDE
 Example part number: **VBUN-2R25-12V-SHINY GOLD-2400K**

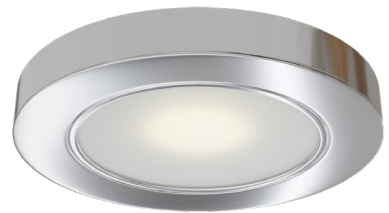
MODEL	FIXTURE COLOR	COLOR TEMPERATURE	
VBUN-2R25-12V			
	Shiny Gold	Black	2400K
	Shiny Silver	White	2700K
	Chrome		3000K
			3500K
			4000K
			5000K

Cabinet Light 12V-2.5W (Shiny Silver)

Model No.:	VBUN-2R25-12V	
Voltage:	12V DC	
Wattage:	2.5W	
LED Type:	3 x 5730 SMD	
Luminous Flux:	200-240Lm	
Beam Angle:	120°	
Material:	Aluminum	
Finish Color:	Shiny Silver	
IP Rating:	IP20 (Dry and damp locations)	
Ra:	CRI>90	
Dimmable:	Yes	

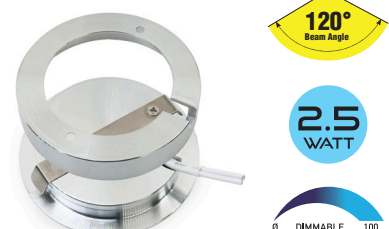


Surface or Flush Mount Installation Possibility



Diameter
62mm (2.43")

Hole Cut Size for Flush Mount
56mm (2.20")



SKU: 666561428730 SKU: 666561428747 SKU: 666561428754 SKU: 666561428761 SKU: 666561428778 SKU: 666561428785



PART NUMBER BUILDER / ORDERING GUIDE
 Example part number: **VBUN-2R25-12V-SHINY GOLD-2400K**

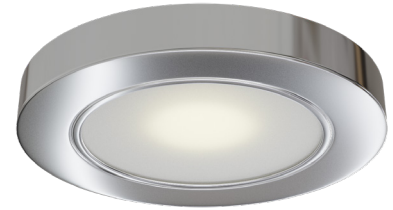
MODEL	FIXTURE COLOR	COLOR TEMPERATURE	
VBUN-2R25-12V			
	Shiny Gold	Black	2400K
	Shiny Silver	White	2700K
	Chrome		3000K
			3500K
			4000K
			5000K

Cabinet Light 12V-2.5W (Chrome)

Model No.:	VBUN-2R25-12V
Voltage:	12V DC
Wattage:	2.5W
LED Type:	3 x 5730 SMD
Luminous Flux:	200-240Lm
Beam Angle:	120°
Material:	Aluminum
Finish Color:	Chrome
IP Rating:	IP20 (Dry and damp locations)
Ra:	CRI>90
Dimmable:	Yes

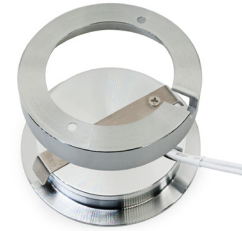


Surface or Flush Mount Installation Possibility



Diameter
62mm (2.43")

Hole Cut Size for Flush Mount
56mm (2.20")



SKU: 666561429904

SKU: 666561429911

SKU: 666561429928

SKU: 666561429935

SKU: 666561429942

SKU: 666561429959

PART NUMBER BUILDER / ORDERING GUIDE
 Example part number: **VBUN-2R25-12V-SHINY GOLD-2400K**

MODEL	FIXTURE COLOR	COLOR TEMPERATURE	
VBUN-2R25-12V			
	Shiny Gold	Black	2400K
	Shiny Silver	White	2700K
	Chrome		3000K
			3500K
			4000K
			5000K

Cabinet Light 12V-2.5W (Shiny White)

Model No.:	VBUN-2R25-12V
Voltage:	12V DC
Wattage:	2.5W
LED Type:	3 x 5730 SMD
Luminous Flux:	200-240Lm
Beam Angle:	120°
Material:	Aluminum
Finish Color:	White
IP Rating:	IP20 (Dry and damp locations)
Ra:	CRI>90
Dimmable:	Yes



Surface or Flush Mount Installation Possibility



Diameter
62mm (2.43")

Hole Cut Size for Flush Mount
56mm (2.20")



SKU: 666561428679

SKU: 666561428686

SKU: 666561428693

SKU: 666561428709

SKU: 666561428716

SKU: 666561428723

PART NUMBER BUILDER / ORDERING GUIDE
 Example part number: **VBUN-2R25-12V-SHINY GOLD-2400K**

MODEL	FIXTURE COLOR	COLOR TEMPERATURE
VBUN-2R25-12V	Shiny Gold Shiny Silver Chrome	Black White
		2400K 2700K 3000K
		3500K 4000K 5000K

Cabinet Light 12V-2.5W (Shiny Black)

Model No.:	VBUN-2R25-12V
Voltage:	12V DC
Wattage:	2.5W
LED Type:	3 x 5730 SMD
Luminous Flux:	200-240Lm
Beam Angle:	120°
Material:	Aluminum
Finish Color:	Black
IP Rating:	IP20 (Dry and damp locations)
Ra:	CRI>90
Dimmable:	Yes



Diameter
62mm (2.43")

Hole Cut Size for Flush Mount
56mm (2.20")

Surface or Flush Mount Installation Possibility



SKU: 666561428792

SKU: 666561428808

SKU: 666561428815

SKU: 666561428822

SKU: 666561428839

SKU: 666561428846

24" Linkable T5 BAR 120V 9W 3CCT
 (LED replacement for conventional T5 lamp)

Model No.:	AD-113-24
Voltage:	120V AC
Wattage:	9W
Brightness:	700Lm
Color Temperature:	3000K, 4000K, 5000K
Length:	10 (240W Max)
Fixture Color:	White
Rendering Index:	CRI>90
IP Rating:	IP20 (Suitable for damp location)
Dimmable:	Yes
Dimensions:	609.6 x 33 x 25.3mm (24 x 1.3 x 1in)



Package Content: Back to Back Connector, Mounting Clips & Screws



ACCESSORIES
(Sold Separately)

T5 Bar Hardwire Box
 Model: AD-113-24-B
 SKU: 666561416171



T5 Bar 3" Flex Connector
 Model: AD-113-24-C
 SKU: 666561416188



T5 Bar Plug-in 5ft Cord
 Model: AD-113-24-CO
 SKU: 666561416195



Linkable LED Linear Light is a low power consumption with high energy efficiency that creates an even illumination without any hotspots. The fixture is available in 24" length with three selectable color temperature.



SKU: 666561428600

VEROBOARD LED CABINET LIGHTS



Multiple Output CV LED Driver for Cabinet Light

Model No.:	OTM-E60
Input Voltage:	100-240V AC
Input Current:	2.0A
Input Frequency:	50-60 Hz
Output Voltage:	12V DC
Output Current:	4.16A
Input Port:	2-Prongs AC Power Cord
Output Port:	Dupont Connector
Number of Input Channels:	1
Number of Output Channels:	6
Cable Length:	5 Feet
Max Load:	50W
Weight:	0.202 Kg
IP Rating:	IP20 (Dry and Damp Locations)
Dimmable:	No
Standards:	CE/ETL/RoHS



Dimensions

Length:	120.30mm (4.735")
Width:	55mm (2.17")
Depth:	18.67mm (0.735")



**12V DC
50W
CLASS 2**

SKU: 666561425425

Slim LED Driver
Unique 1- input to 6-way output port

4 Way Distributor Connector Box 2-Pin DuPont Terminal for LED Cabinet Lights

Model No.:	VBUN-DIS-4
Voltage Rating:	24V DC
Current Rating:	3A Max
Port Type:	DuPont Port
No. of Connecting Ports:	4 Ports
Pins:	2-Pin
Material:	PVC
Wire Length:	2 Meters (6.56')
Wire Gauge:	18 AWG
Dimensions:	1.625" x 1.48" x 0.39"



SKU: 666561426118

3 Way Distributor Connector Box 2-Pin DuPont Terminal for LED Cabinet Lights

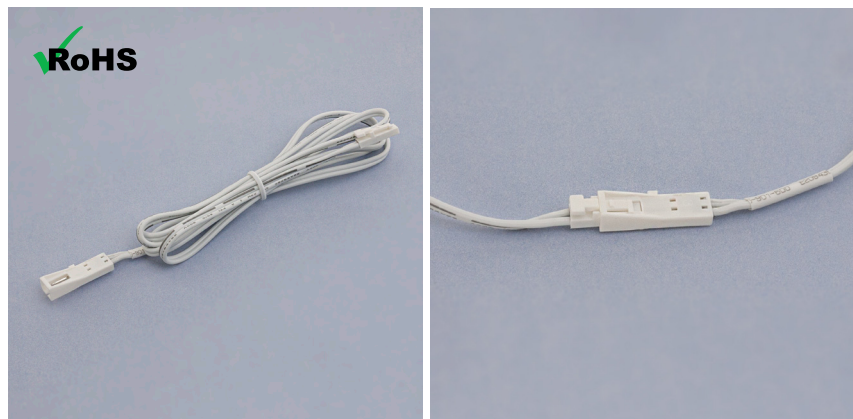
Model No.:	VBUN-DIS-3
Voltage Rating:	24V DC
Current Rating:	3A Max
Port Type:	DuPont Port
No. of Connecting Ports:	3 Ports
Pins:	2-Pin
Material:	PVC
Wire Length:	2 Meters (6.56')
Wire Gauge:	18 AWG
Dimensions:	1.32" x 1.48" x 0.39"



SKU: 666561426101

2-Pin Dupont Male and Female Extension/Connector Cable

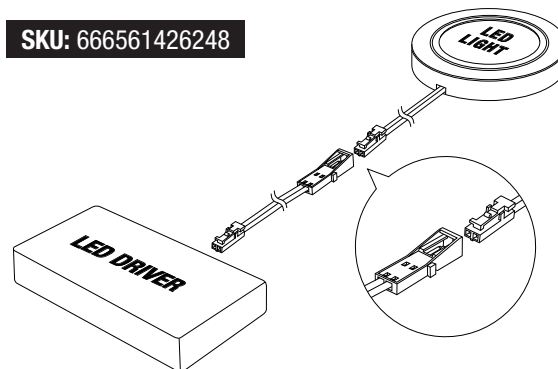
Model No.:	VBD-LR-2P
Voltage Rating:	250V
Current Rating:	3A Max
Pitch:	2.54mm (0.1")
Port Type:	2-Pin Dupont Port / 2-Pin JST
Type:	Male to Female 2-Pin Dupont / 2-Pin JST Connector
Category:	Wire to Wire Connector
Fastening Type:	Locking Ramp
Material:	PVC (Plastic)
Wire Length:	1 Meter (39.3")
Wire Gauge:	22 AWG



SKU: 666561426248

2-Pin Dupont Male and Female Extension/Connector Cable

This 2-pin DuPont connector is a cable set of one male and a female pair. It acts as a solderless electrical connection. The male and female connectors are connected with a 1 meter length cable, thereby acting as an extension when needed. They are specially designed for LED cabinet lights that come with a DuPont connector terminal. The male terminal mates with the female terminal of the LED cabinet light with the help of a locking ramp. The connector has a 2.54mm pitch spacing and is one of the different types of 0.1" pitch connectors. Moreover, this connector can also perfectly mate the 2-pin JST connector.



VEROBOARD LED CABINET LIGHTS



FLUSH MOUNT

2 APPLICATION METHODS



SURFACE MOUNT

