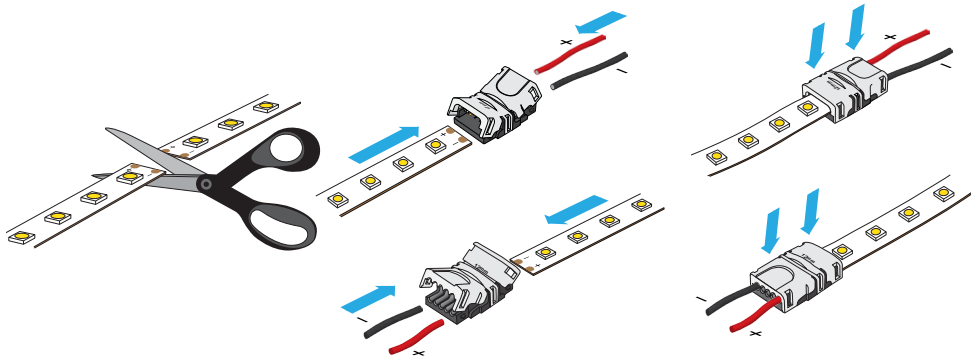


Max. Amp

12V - 5A / 24V - 4A

Wire Gauge

22 AWG



**1** CUT STRIP LIGHT  
AT CUTTING POINT

**2** INSERT STRIP LIGHT AND  
WIRES INTO THE CONNECTOR  
AT THE SAME TIME

**3** PUSH BOTH CAPS TO  
CLOSE THE CONNECTOR