

Job Name: _____

Distributor: _____

Type: _____

3" Round In-ground Light with Concrete Box 12V, 5W, 3000K (Warm White)

SPECIFICATIONS



Model No.:	VBD-RD34-5W-30K
Voltage:	12V DC
Wattage:	5W
Trim Color:	Brushed Nickel
Color Temperature:	3000K (Warm White)
Brightness:	1350Lm
Beam Angle:	40°
IP Rating:	IP67 (Outdoor Rated)
Engine Dimensions without Housing:	Outside Diameter - 80mm (3.13") Inside Diameter - 51mm (2") Height - 87mm (3.45")
Concrete Box:	Diameter - 106mm (4.17") Height - 53mm (2")
Cable Size:	530mm x 5.5mm (20.8" x 0.21") 2 x 18AWG
Certification:	UL



FEATURES:

- This versatile in-ground lighting fixture seamlessly blends into various outdoor settings, catering to diverse lighting requirements.
- Its ability to create a distinctive atmosphere while providing practical illumination makes it a perfect choice for pathways, garden lighting, and other desired outdoor applications.
- Included with the fixture is a concrete box for installation convenience.
- This in-ground light is not only aesthetically pleasing but also commonly used as an LED pathway light, pool deck light, and patio light, elevating the visual appeal and functionality of outdoor spaces.
- With an IP67 rating, this light remains operational in all weather conditions and can withstand being walked upon, ensuring its durability and reliability.
- Customers can enjoy peace of mind with a 2-year in-store warranty accompanying the product, providing assurance and support.

Accessories (Sold Separately)

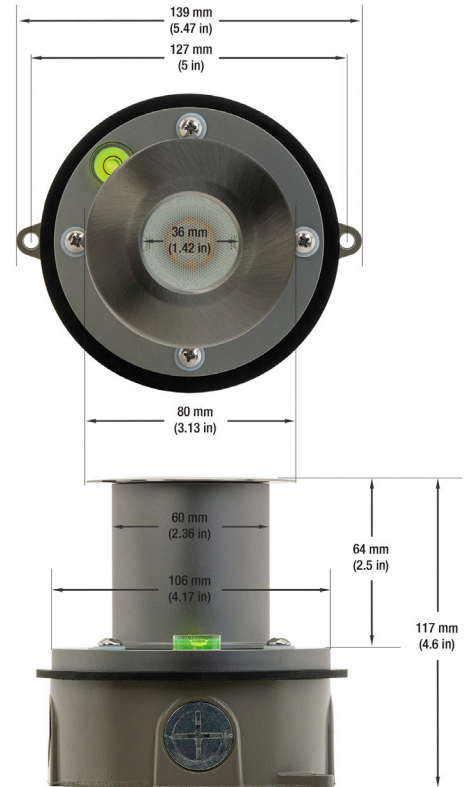
Model: 3W-2C-SC
SKU: 666561406288

Model: 2W-2C-SC
SKU: 666561406295

Model: 3W-JB-M686
SKU: 666561434182

**3 Way Outdoor
Screw Type Connector
2 Contact**

**2 Way Outdoor
Screw Type Connector
2 Contact**



Disclaimer:

The data and information contained in this specification sheet are subject to change without notice; the ratings supplied are provided based on the product manufacturer. The information contained in this specification sheet should not be considered a warranty, expressed or implied, including, but not limited to, a warranty of merchantability or fitness for a particular purpose. In no event shall Veroboard be liable for any incidental or consequential damages resulting from the use, misuse, or inability to use the product. This exclusion applies regardless of whether such damages are sought based on breach of warranty, breach of contract, negligence, strict liability in tort, or any other legal theory.



SKU: 666561430948

Light efficiency:



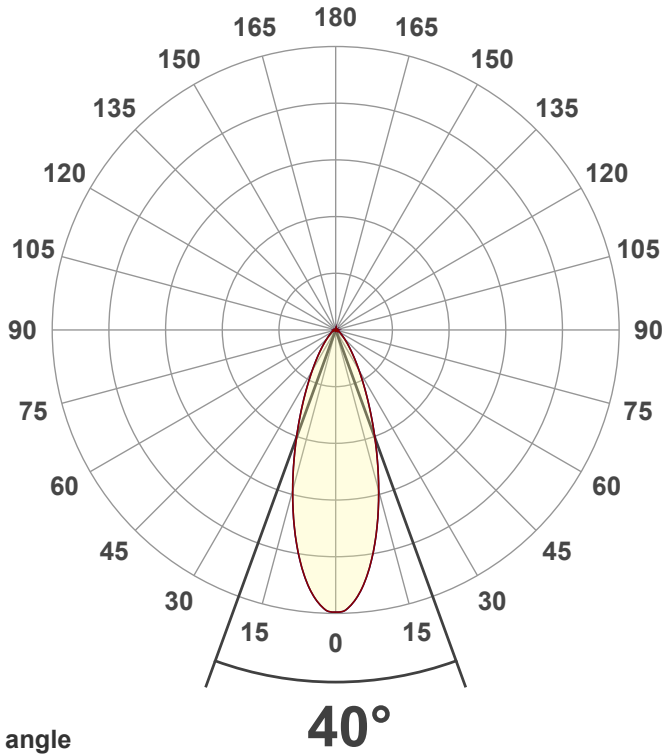
Light quality:



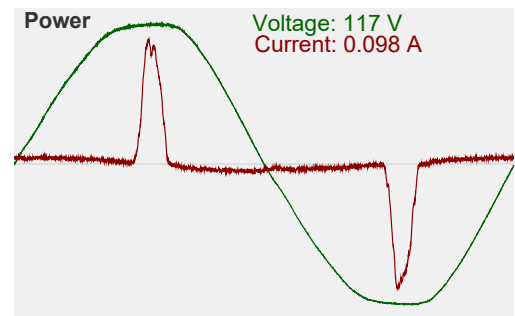
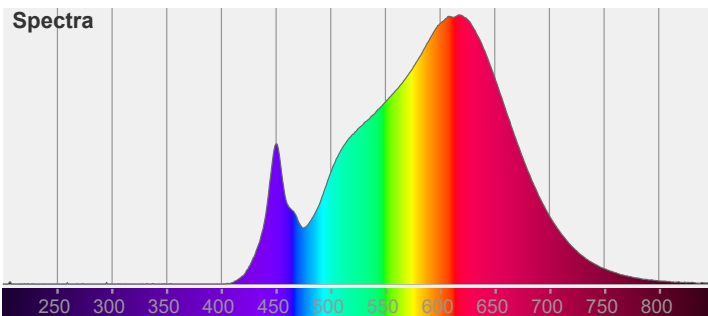
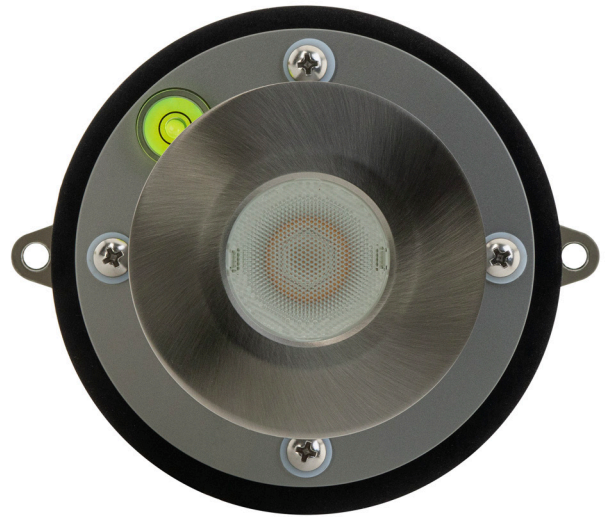
Color temperature:

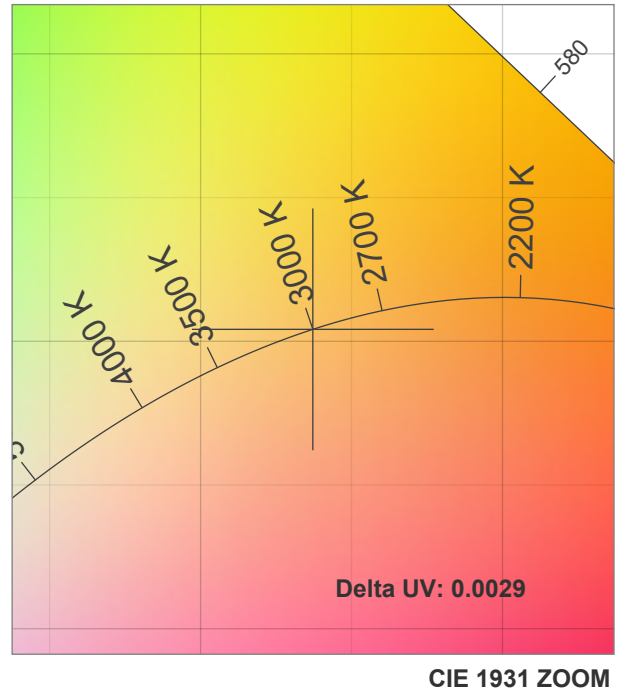
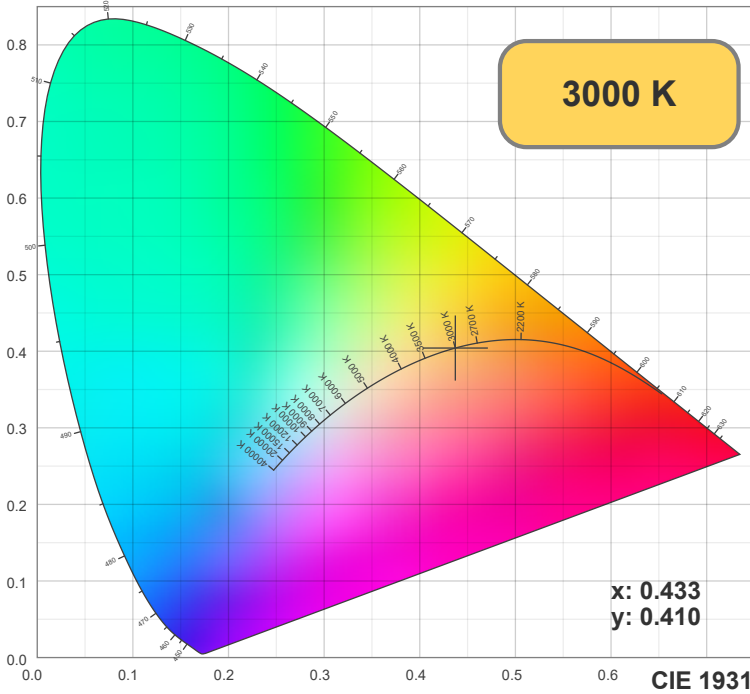


Output: 1350 lm
Peak: 2649 cd
Power: 5.1 W
PF: 0.44
2 PLANES

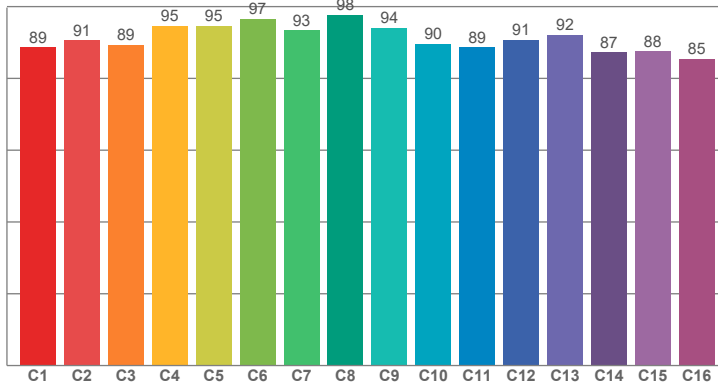


Beam angle

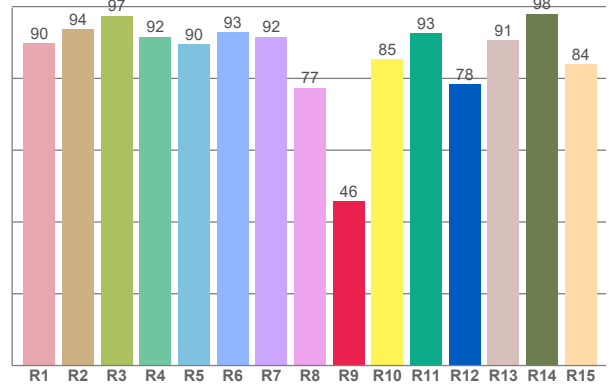




TM30: 91.4



CRI: 90.5 (R1-R8)



CRI R values, only R1-R8 are used to calculate final CRI value

R1	R2	R3	R4	R5	R6	R7	R8	R9	R10	R11	R12	R13	R14	R15
89.81	93.70	97.44	91.56	89.56	92.85	91.61	77.40	45.78	85.26	92.62	78.41	90.67	98.06	83.86

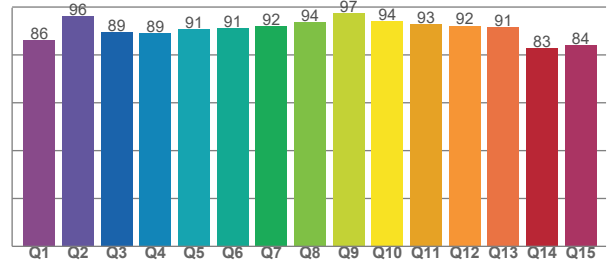
TM30 C values, 16 binned values out of total of 99 C values

C1	C2	C3	C4	C5	C6	C7	C8	C9	C10	C11	C12	C13	C14	C15	C16
88.66	90.61	89.35	94.69	94.66	96.58	93.47	97.73	94.12	89.63	88.60	90.72	92.13	87.33	87.59	85.48

CQS Q values

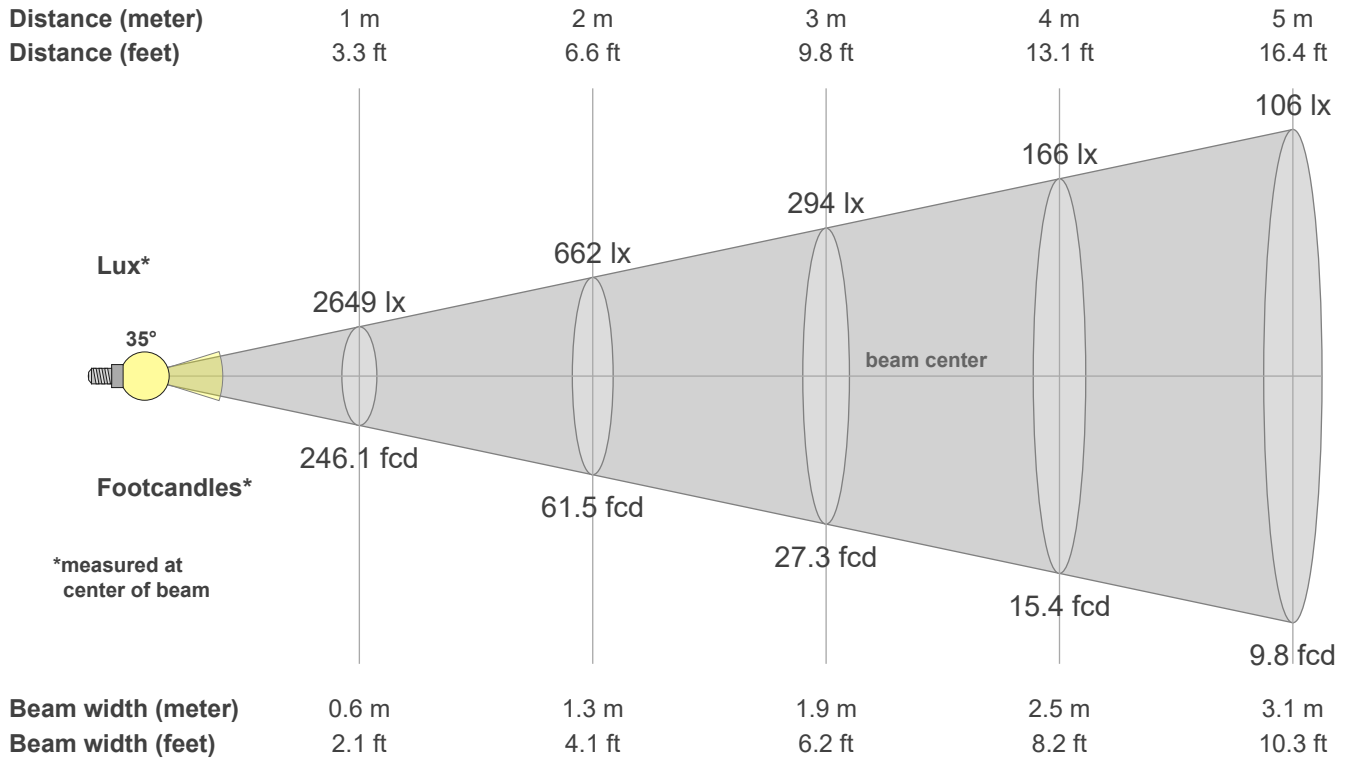
Q1	Q2	Q3	Q4	Q5	Q6	Q7	Q8	Q9	Q10	Q11	Q12	Q13	Q14	Q15
86.19	96.07	89.49	89.22	90.89	91.02	91.81	93.82	97.48	94.09	92.79	92.20	91.42	82.78	84.08

CQS: 89.9



Color parameters

CCT	CRI	CRI R9	TM30 Rf	TM30 Rg	CQS	x	y	u	v	Duv
3000 K	90.5	45.8	91.4	98.0	89.9	0.4	0.4	0.3	0.3	0.0029



Intensities in 0° c-plane

0°	2°	4°	6°	8°	10°	12°	14°	16°	18°	20°	22°	24°	26°	28°	30°	32°	34°	36°	38°
2649	2630	2550	2427	2264	2079	1877	1667	1460	1262	1078	912	765	639	531	441	368	306	254	213
100%	99%	96%	92%	85%	78%	71%	63%	55%	48%	41%	34%	29%	24%	20%	17%	14%	12%	10%	8%

Intensities in 90° c-plane

0°	2°	4°	6°	8°	10°	12°	14°	16°	18°	20°	22°	24°	26°	28°	30°	32°	34°	36°	38°
2649	2630	2550	2427	2264	2079	1877	1667	1460	1262	1078	912	765	639	531	441	368	306	254	213
100%	99%	96%	92%	85%	78%	71%	63%	55%	48%	41%	34%	29%	24%	20%	17%	14%	12%	10%	8%

Intensities in 180° c-plane

0°	2°	4°	6°	8°	10°	12°	14°	16°	18°	20°	22°	24°	26°	28°	30°	32°	34°	36°	38°
2649	2630	2550	2427	2264	2079	1877	1667	1460	1262	1078	912	765	639	531	441	368	306	254	213
100%	99%	96%	92%	85%	78%	71%	63%	55%	48%	41%	34%	29%	24%	20%	17%	14%	12%	10%	8%

Intensities in 270° c-plane

0°	2°	4°	6°	8°	10°	12°	14°	16°	18°	20°	22°	24°	26°	28°	30°	32°	34°	36°	38°
2649	2630	2550	2427	2264	2079	1877	1667	1460	1262	1078	912	765	639	531	441	368	306	254	213
100%	99%	96%	92%	85%	78%	71%	63%	55%	48%	41%	34%	29%	24%	20%	17%	14%	12%	10%	8%

Beam angle 50%	Field angle 10%	Cutoff angle 2.5%	Intensity ratio in 120° cone	Intensity ratio in 90° cone
34.7°	71.1°	105.7°	96.3%	89.5%