

## 2" Mini LED Recessed Gimbal



Veroboard 2-inch mini LED recessed gimbal comes with an IC-rated LED driver. It comes with zero flickers and with a rendering index of 90+. This light has a feature of selecting the light color from five temperatures ranging from 2700K-3000K-3500K to 4000K-5000K. The fixture easily fits in a 54 mm hole size with an easy installation using push spring clips. Moreover, the gimbal helps in adjusting the light in the needed direction with a 30-degree tilt angle.

### SPECIFICATIONS

<b>Engine Model No:</b>	AD-LED-2-S5W-5CCTWH-EY
<b>Voltage:</b>	120V AC
<b>Frequency:</b>	50/60Hz
<b>Wattage:</b>	5W
<b>LED Driver:</b>	IC Rated
<b>Color Temperature:</b>	5CCT Selectable Color Temperature (2700K-3000K-3500K-4000K-5000K)
<b>Gimbal Tilt Angle:</b>	30°
<b>Beam Angle:</b>	40°
<b>Dimmable:</b>	Yes
<b>Dimming:</b>	100 - 10%
<b>Dimmers:</b>	LED/CEL Dimmers
<b>Brightness:</b>	400 Lumens
<b>Rendering Index:</b>	CRI>90
<b>LED Type:</b>	Integrated COB LED
<b>Fixture Color:</b>	White
<b>Fixture Material:</b>	Die-Cast Aluminum
<b>Rated Life:</b>	50,000 Hours
<b>Installation:</b>	Recessed/Flush Mount
<b>IP Rating:</b>	IP20 (Damp Locations)
<b>Outer Dimensions:</b>	Ø65.31mm (Ø2.57 in) x 35mm (1.37 in) Depth
<b>LED Driver Dimensions:</b>	Ø51.75 mm (Ø2.0 in) x 100.50 mm (4.0 in) Length
<b>Cut Size:</b>	54 mm (2.125 in)
<b>Package Content:</b>	Gimbal with IC-Rated LED Driver
<b>Package Dimensions:</b>	5.4 x 4.6 x 2.9 in (13.8 x 11.8 x 7.3 cm)
<b>Package Weight:</b>	0.316 Kg
<b>Certification:</b>	FCC/ETL/Energy Star/RoHS



Selectable  
Color Temperature  
Switch



**LED DRIVER Dimensions:**  
Diameter: 51.75 mm (2.0 in)  
Length: 100.50 mm (4.0 in)

### Safety and Warning

The fixture must be wired in accordance with local electrical codes. And all the installation must be done by a certified electrician. Please be sure the main power switch is OFF before the installation or attempting any maintenance. There is a risk of electric shock, do not expose wiring to the edges of the sheet metal or any other sharp object.

Do not modify the product, any modification may render the product unsafe and void the warranty. Read all the instructions from the installation manual before installing. This product is suitable for dry and damp locations only.

Job Name: \_\_\_\_\_  
 Distributor: \_\_\_\_\_  
 Type: \_\_\_\_\_



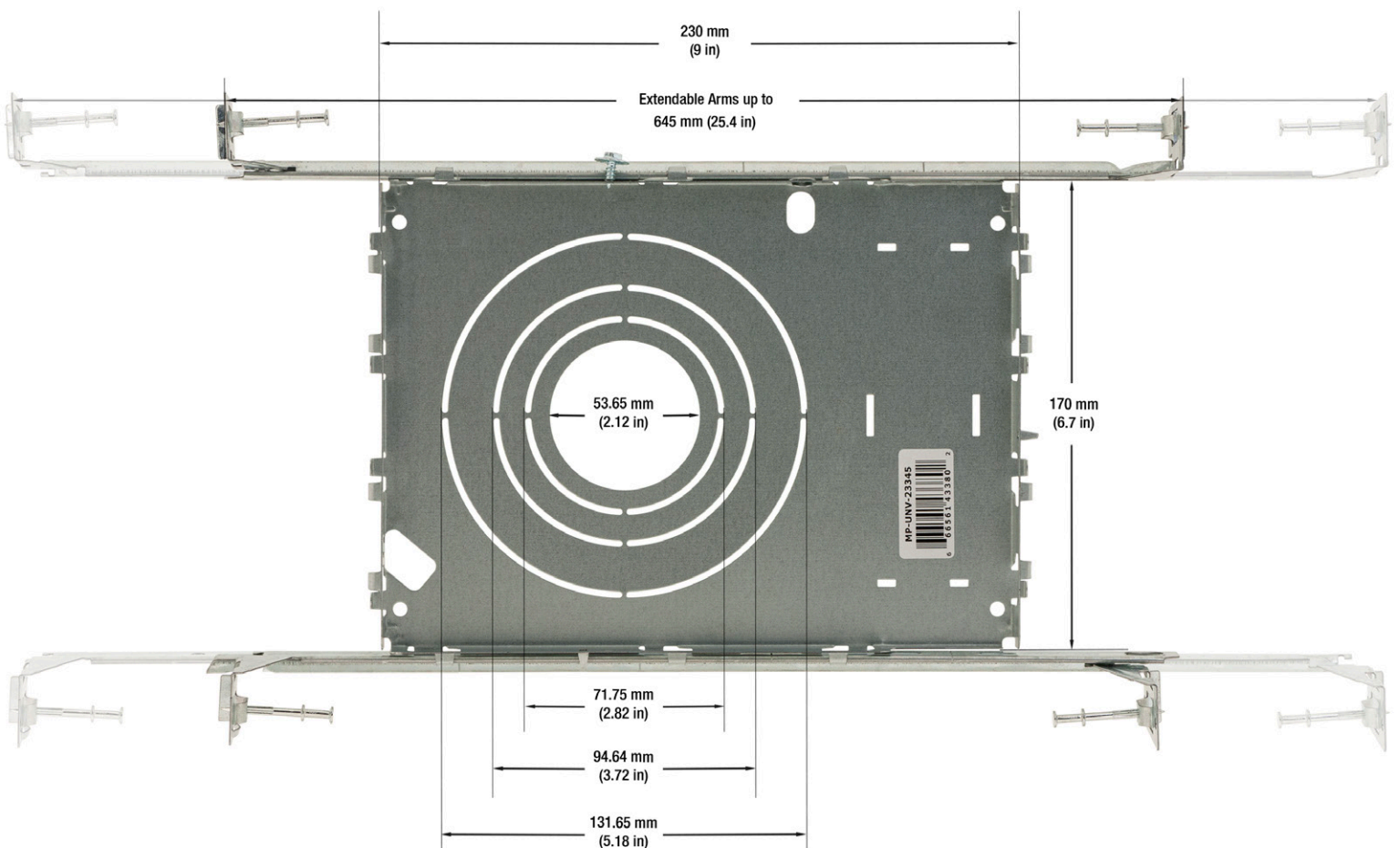
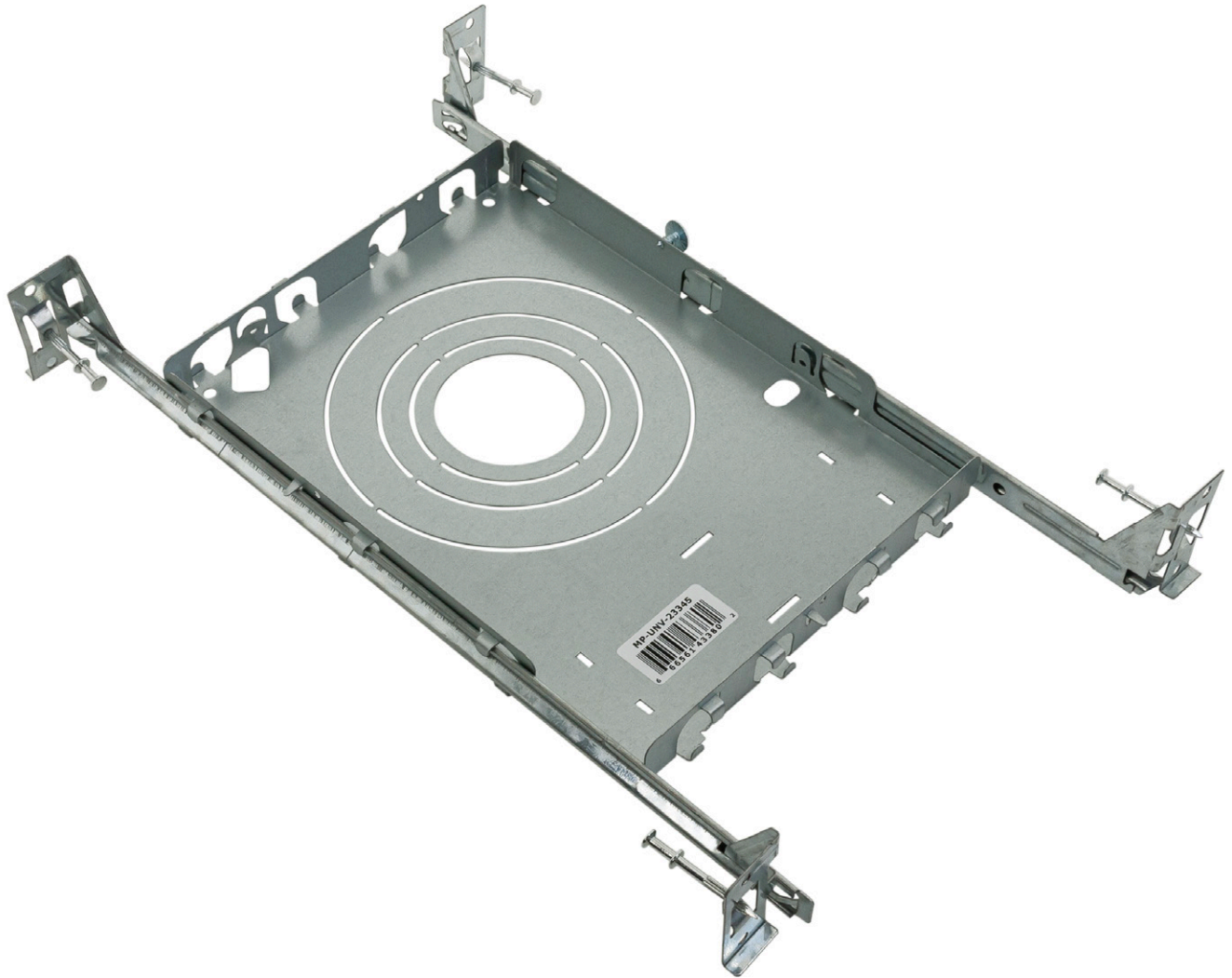
SKU: 666561425142

# New Construction Universal Mounting Plate

*(Sold separately)*

New Construction Universal Mounting Plate suitable for 2, 3, 3.5, and 5-inch sizes, with two hanger bars.

Model: **MP-UNV-23345** | SKU: **666561433802**



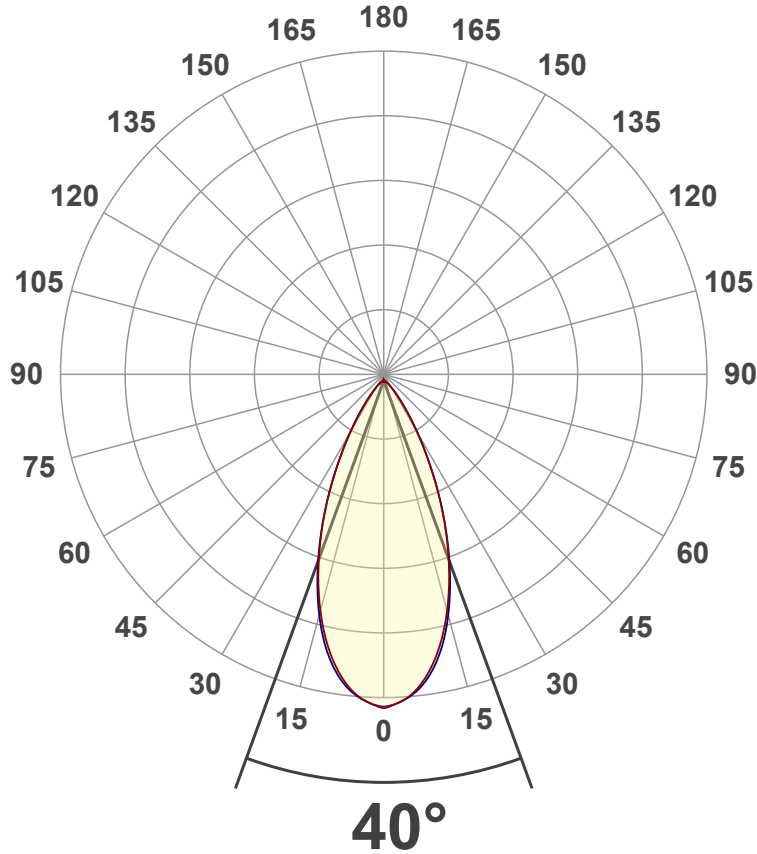
# Light Measurement Report

Print date: 2023-01-06

Measurement date and time: 2023-01-06 3:15:45 PM – Measurement no. VFR-230106-0058-MS

## Luminous Intensity diagram

Unit: 0-100% of peak intensity



## Main Values

Output (total Lumen)	400 lm
Lumen Up% / Down%	0.02% / 99.98%
Peak Intensity	599 cd
Beam Angle (50%)	40°
Beam Angle (90%)	45.8°
Beam Angle (10%)	45.6°

## Cut-off Angle

Average 2,5%	104.2°
--------------	--------

## Field Angle

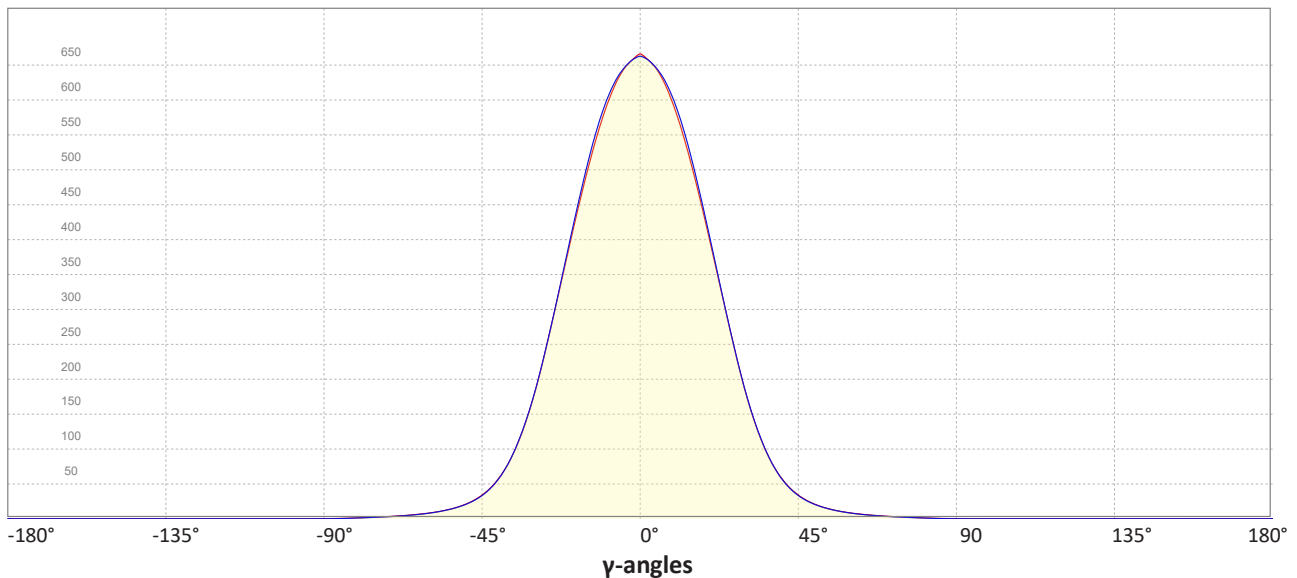
Average 10%	78.2°
-------------	-------

## Intensity Ratio

In 120° cone	98.0%
In 90° cone	92.9%

**C000-C180**  
**C090-C270**

## Linear distribution diagram - Intensity (candela) vs $\gamma$ -angle



# Light Measurement Report

Print date: 2023-01-06

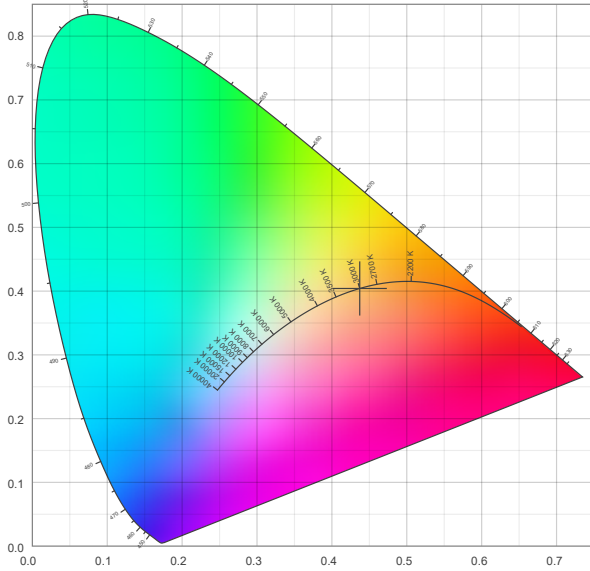
Measurement date and time: 2023-01-06 3:15:45 PM – Measurement no. VFR-230106-0058-MS

## Color details

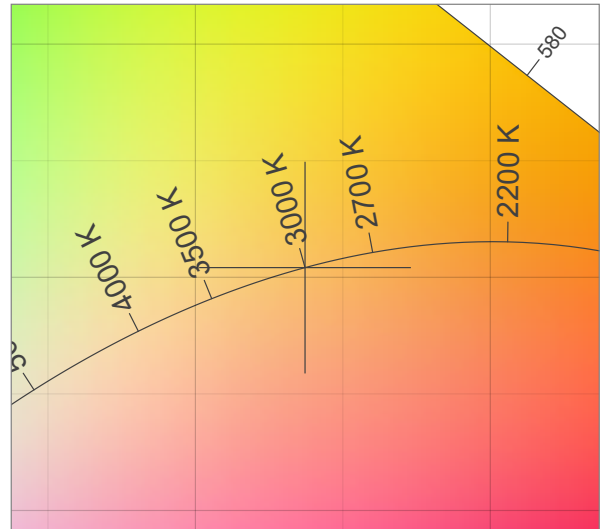
Correlated Color Temperature, Target CCT = 3000 K  
 Correlated Color Temperature, Measured CCT = 3077 K  
 Color Rendering Index CRI 96.1  
 Color Rendering Index, R9 (red component) R9 = 80.2  
 Color Rendering TM30-18 R<sub>f</sub> 93.7 – R<sub>g</sub> 101.3  
 Color Quality Scale CQS = 94.0

MacAdam Steps  
 Color coordinates CIE 1931 (x;y) = (0.437;0.404)  
 Color coordinate CIEs 1960 (u';v') = (0.251;0.348)  
 Color deviation from BBL Duv = -0.0041  
 Color coordinate CIEs 1976 (CIELUV) (u'';v'') = (0.251;0.251)

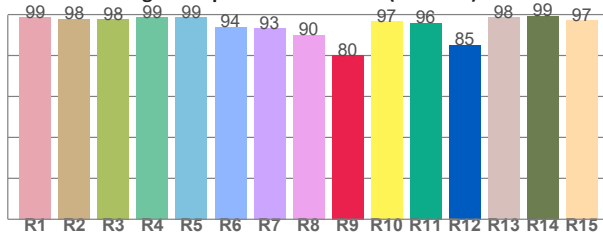
CIE 1931



CIE 1931 – zoomed on Planckian locus



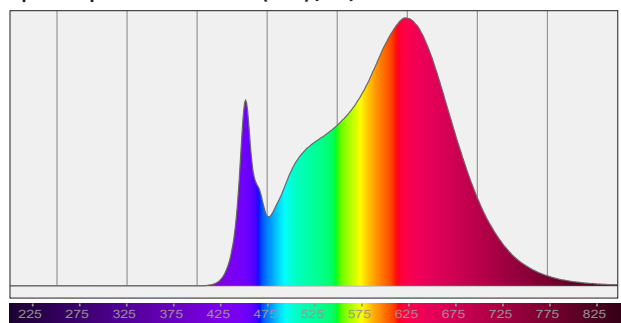
Color Rendering Index per reference color (CIE 1995)



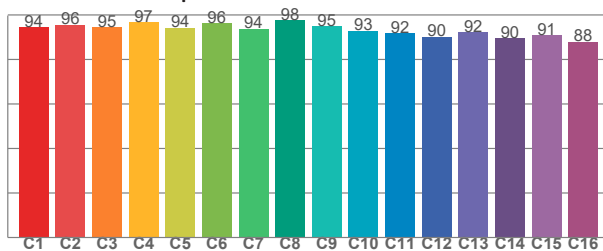
CRI R values, only R1-R8 are used to calculate final CRI value

R1	R2	R3	R4	R5	R6	R7	R8	R9	R10	R11	R12	R13	R14	R15
98.7	97.9	97.7	98.6	98.7	94.0	93.3	90.0	80.2	96.7	95.9	85.2	98.5	99.4	97.1

Spectral power distribution (SPD) / W/nm – 0-100%



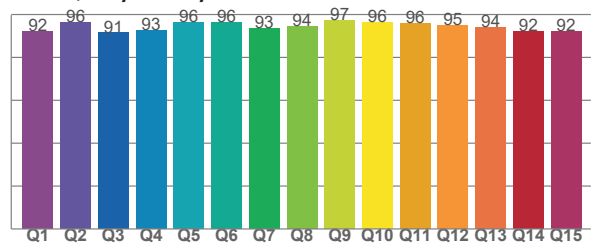
TM30-18 Rf-values per hue bin



TM30 C values, 16 binned values out of total of 99 C values

C1	C2	C3	C4	C5	C6	C7	C8	C9	C10	C11	C12	C13	C14	C15	C16
94.4	95.7	94.5	96.8	94.2	96.3	93.8	97.6	94.9	93.0	91.8	90.2	92.3	89.6	90.9	88.0

Color Quality Scale by reference color



CQS Q values

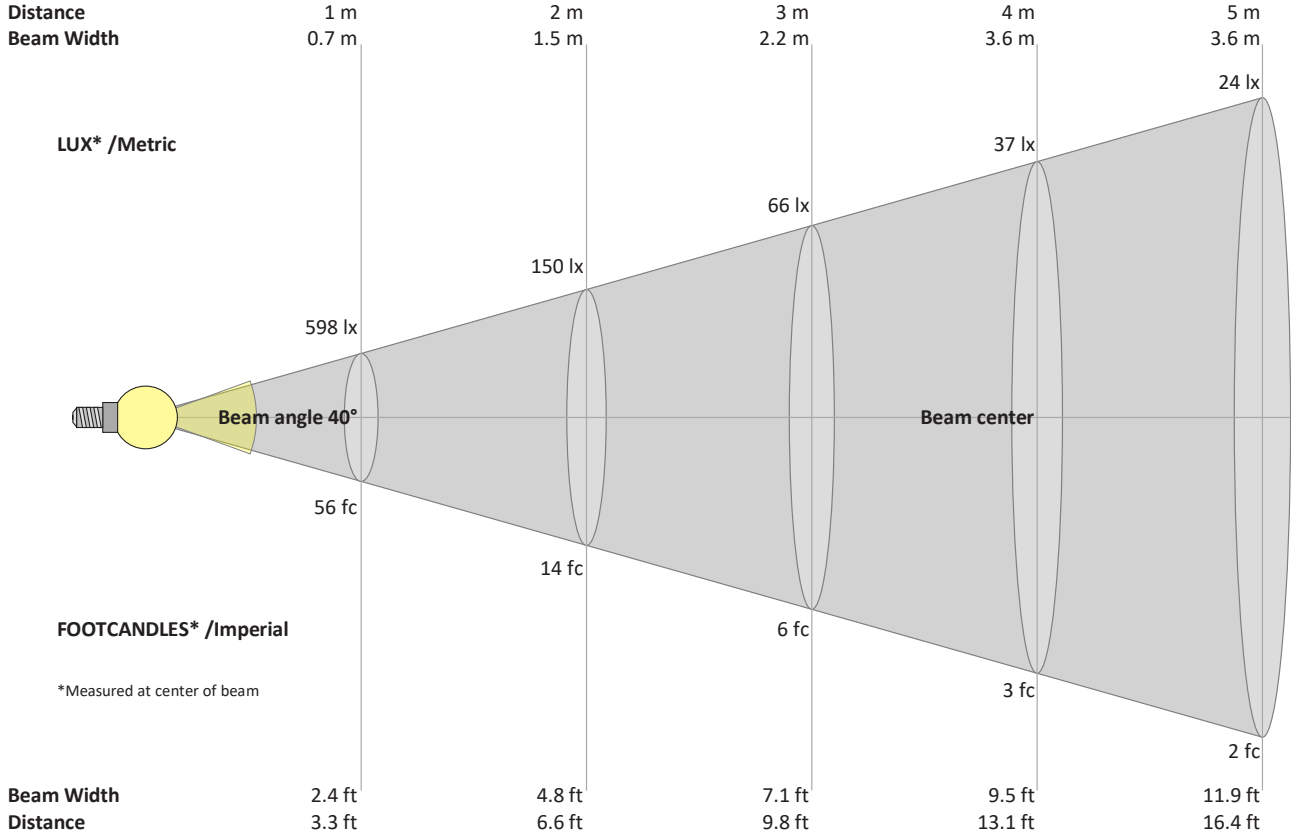
Q1	Q2	Q3	Q4	Q5	Q6	Q7	Q8	Q9	Q10	Q11	Q12	Q13	Q14	Q15
92.2	96.4	91.4	92.5	96.3	96.5	93.5	94.4	97.4	96.5	96.0	94.8	94.0	92.3	92.2

# Light Measurement Report

Print date: 2023-01-06

Measurement date and time: 2023-01-06 3:15:45 PM – Measurement no. VFR-230106-0058-MS

## Beam Details



### Beam intensities from 1 – 20 m

1	2	3	4	5	6	7	8	9	10	11	12	13	14	15	16	17	18	19	20	m
3.3	6.6	9.8	13.1	16.4	19.7	23	26.2	29.5	32.8	36.1	39.4	42.7	45.9	49.2	52.5	55.8	59.1	62.3	65.6	ft
598	150	66	37	24	17	12	9	7	6	5	4	4	3	3	2	2	2	2	1	lux
55.6	13.9	6.2	3.5	2.2	1.5	1.1	0.9	0.7	0.6	0.5	0.4	0.3	0.3	0.2	0.2	0.2	0.2	0.2	0.1	fc

### Intensities in 0° c-plane

0°	2°	4°	6°	8°	10°	12°	14°	16°	18°	20°	22°	24°	26°	28°	30°	32°	34°	36°	38°	y
598	594	584	570	551	527	499	467	431	394	355	315	275	236	198	163	133	107	86	68	cd
100%	99%	98%	95%	92%	88%	83%	78%	72%	66%	59%	53%	46%	39%	33%	27%	22%	18%	14%	11%	of 0°val

### Intensities in 90° c-plane

0°	2°	4°	6°	8°	10°	12°	14°	16°	18°	20°	22°	24°	26°	28°	30°	32°	34°	36°	38°	y
598	593	585	573	556	534	507	475	439	400	359	318	276	236	199	164	134	108	86	68	cd
100%	99%	98%	96%	93%	89%	85%	79%	73%	67%	60%	53%	46%	40%	33%	27%	22%	18%	14%	11%	of 0°val

### Intensities in 180° c-plane

0°	2°	4°	6°	8°	10°	12°	14°	16°	18°	20°	22°	24°	26°	28°	30°	32°	34°	36°	38°	y
598	594	584	570	551	527	499	467	431	394	355	315	275	236	198	163	133	107	86	68	cd
100%	99%	98%	95%	92%	88%	83%	78%	72%	66%	59%	53%	46%	39%	33%	27%	22%	18%	14%	11%	of 0°val

### Intensities in 270° c-plane

0°	2°	4°	6°	8°	10°	12°	14°	16°	18°	20°	22°	24°	26°	28°	30°	32°	34°	36°	38°	y
598	593	585	573	556	534	507	475	439	400	359	318	276	236	199	164	134	108	86	68	cd
100%	99%	98%	96%	93%	89%	85%	79%	73%	67%	60%	53%	46%	40%	33%	27%	22%	18%	14%	11%	of 0°val