

# VEROBOARD®

## 7" Retaining Wall/Step Lights 12V AC/DC 2W (3000K & RGBW)

### SPECIFICATIONS

3000K (2700K with lens)



|                    |                               |
|--------------------|-------------------------------|
| Model No:          | HSC2-2W-FLT-30K               |
| Voltage:           | 12V AC/DC                     |
| Wattage:           | 2W                            |
| Color Temperature: | 3000K (2700K with lens)       |
| Brightness:        | 180 Lumens                    |
| Light Source:      | 6 SMD                         |
| Wire Gauge:        | 5ft of AWG22                  |
| Beam Angle:        | 45°                           |
| Dimmable:          | No                            |
| Dimensions:        | 175mm x 75mm (6.875" x 2.95") |
| IP Rating:         | IP67 (Outdoor rated)          |

**SKU: 666561418182**

### FEATURES:

- **Outdoor Step Lights:** With a working temperature range of -4° F-122° F and an IP67 waterproof rating, HSC2-2W-FLT-30K LED low voltage step lights are perfect for outdoor assembly.
- **Widely Used:** Powered by 12V AC/DC voltage. This light can illuminate landscape steps, retaining walls, decks, flowerbeds, and masonry walls.
- **High Lumen Lighting:** Emitting 180Lm of 3000K (2700 with lens) soft white light, this LED hardscape light only needs 2W to match the output of a 1W halogen light. The 45° downward beam angle eliminates glare, while the CRI of 90 displays the true colors of objects.
- **Quality Assurance:** HSC2-2W-FLT-30K hardscape light's high quality and safe use are assured. It has a long 40,000hrs lifespan and comes with a two years warranty.
- **Tips:** This product only contains lights and does not contain a low-voltage power supply. The power supply needs to be purchased separately. But our landscape lights can work with a 12V AC/DC system. May you can use it in your existing power supply.

SOFT WHITE  
2700K

WARM WHITE  
3000K



### SPECIFICATIONS

RGBW

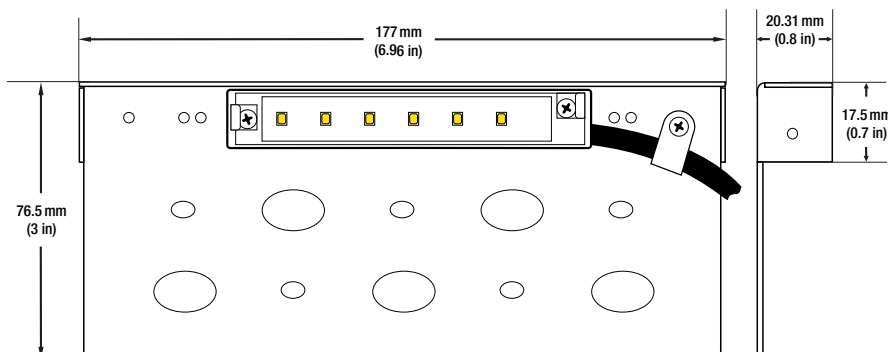


|                    |                               |
|--------------------|-------------------------------|
| Model No:          | HSC2-2W-RGBW                  |
| Voltage:           | 12V AC/DC                     |
| Wattage:           | 2W                            |
| Color Temperature: | RGBW (Multi-color)            |
| Brightness:        | 180 Lumens                    |
| Light Source:      | 6 SMD                         |
| Wire Gauge:        | 5ft of AWG22                  |
| Beam Angle:        | 45°                           |
| Dimmable:          | Yes                           |
| Dimensions:        | 175mm x 75mm (6.875" x 2.95") |
| IP Rating:         | IP67 (Outdoor rated)          |

**SKU: 666561418199**

### FEATURES:

- **Outdoor Step Lights:** With a working temperature range of -4° F-122° F and an IP67 waterproof rating, HSC2-2W-RGBW LED low voltage step lights are perfect for outdoor assembly.
- **Widely Used:** Powered by 12V AC/DC voltage. This light can illuminate landscape steps, retaining walls, decks, flowerbeds, and masonry walls.
- **High Lumen Lighting:** Emitting 180Lm of Red, Blue, Green, and White and any color in between. The 45° downward beam angle eliminates glare.
- **Quality Assurance:** HSC2-2W-RGBW hardscape light's high quality and safe use are assured. It has a long 40,000hrs lifespan and comes with a two years warranty.
- **Tips:** This product only contains lights and does not contain a controller or low-voltage power supply. The controller and power supply need to be purchased separately. But our landscape lights can work with a 12V AC/DC system. May you can use it in your existing power supply.



For more information about our products and services, please visit our website: [www.veroboard.com](http://www.veroboard.com)

## ACCESSORIES (Sold Separately)

### Face Trims



Brushed Nickel  
HSC2-2W-FLT-30K-BN  
SKU: 666561425234

Matte Black  
HSC2-2W-FLT-30K-BK  
SKU: 666561425210



3 Way PC Waterproof  
Junction Box  
(Sold separately)

Model: 3W-JB-M686  
SKU: 666561434182



3 Way Outdoor Screw Type  
Connector 2 Contact  
(Sold separately)

Model: 3wW-2C-SC  
SKU: 666561406288



2 Way Outdoor Screw Type  
Connector 2 Contact  
(Sold separately)

Model: 2W-2C-SC  
SKU: 666561406295

## ACCESSORIES (Sold Separately)

### Face Trims



Brushed Nickel  
HSC2-2W-FLT-30K-BN  
SKU: 666561425234

Matte Black  
HSC2-2W-FLT-30K-BK  
SKU: 666561425210



3 Way PC Waterproof  
Junction Box  
(Sold separately)

Model: 3W-JB-M686  
SKU: 666561434182



3 Way Outdoor Screw Type  
Connector 5 Contact (RGBW)  
(Sold separately)

Model: 3W-YC-RGBW-M685  
SKU: 666561434205

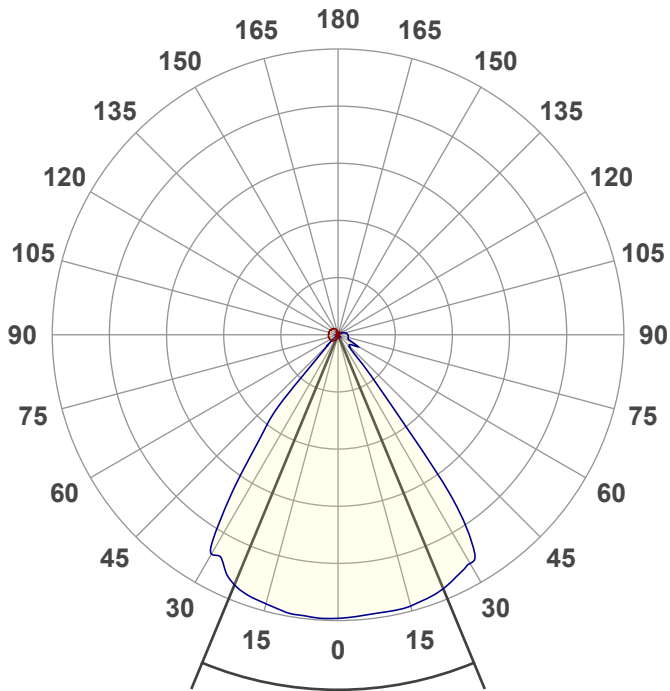
To see all available controllers and remote controls, please scan the QR code with your smartphone.



### Disclaimer:

The data and information contained in this specification sheet are subject to change without notice; the ratings supplied are provided based on the product manufacturer. The information contained in this specification sheet should not be considered a warranty, expressed or implied, including, but not limited to, a warranty of merchantability or fitness for a particular purpose. In no event shall Veroboard be liable for any incidental or consequential damages resulting from the use, misuse, or inability to use the product. This exclusion applies regardless of whether such damages are sought based on breach of warranty, breach of contract, negligence, strict liability in tort, or any other legal theory.

For more information about our products and services, please visit our website: [www.veroboard.com](http://www.veroboard.com)



Beam angle **45°**



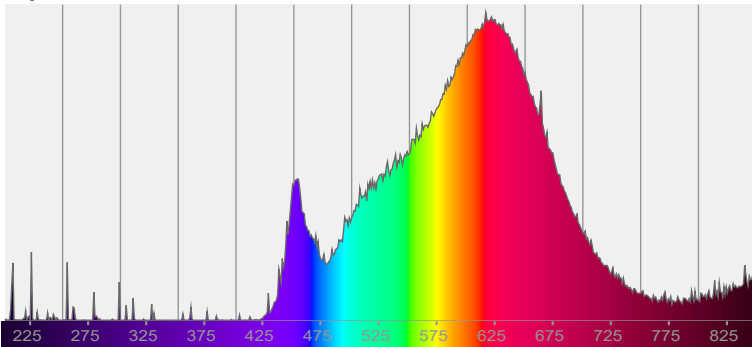
SKU: 666561418182

WARM  
WHITE  
3000K

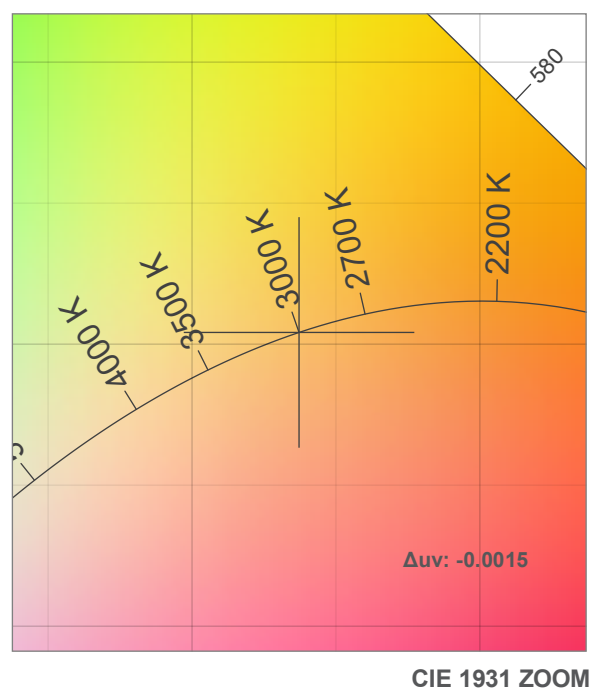
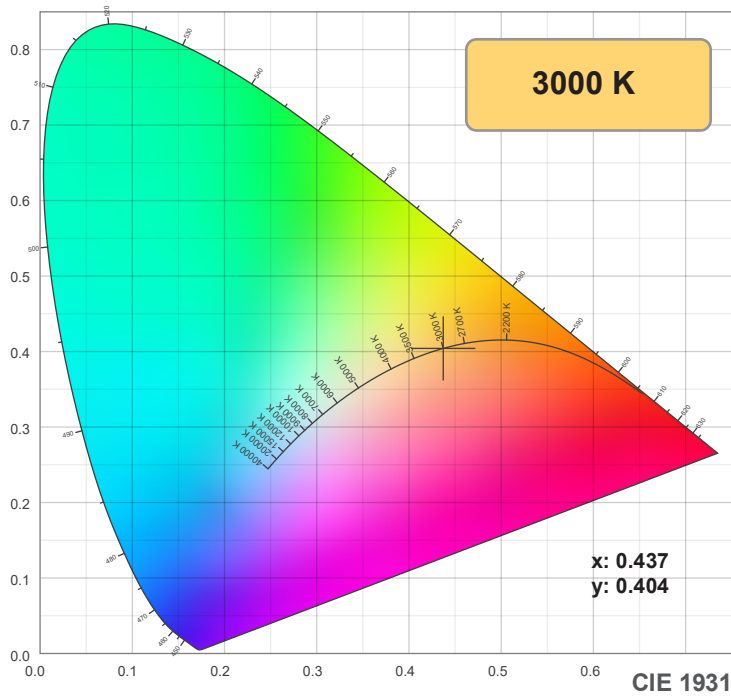
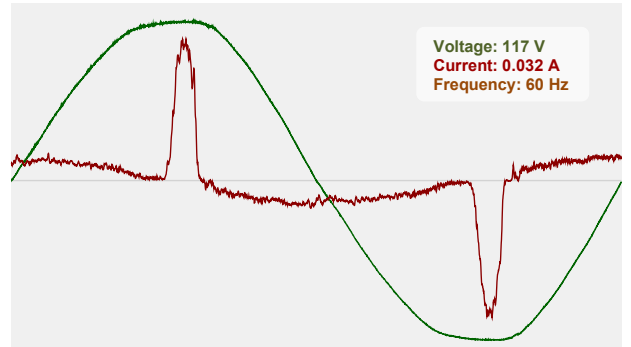


CIE 1931  
x: 0.437  
y: 0.404

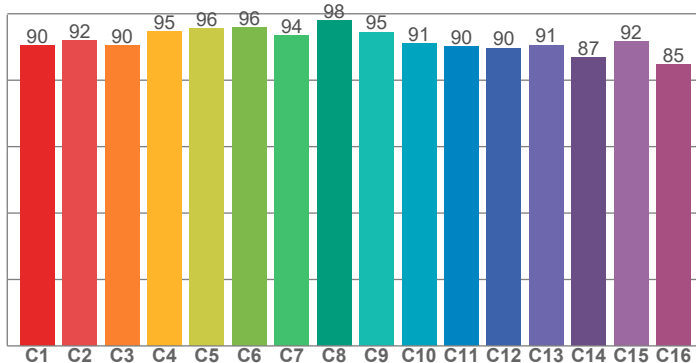
**Spectra**



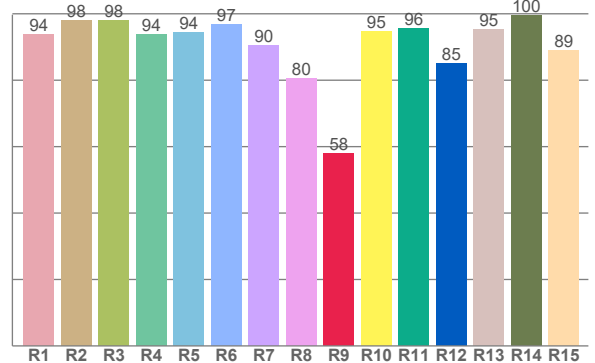
**Power**



TM-30: 91.9



CRI: 93.2 (R1-R8)



CRI R values, only R1-R8 are used to calculate final CRI value

| R1   | R2   | R3   | R4   | R5   | R6   | R7   | R8   | R9   | R10  | R11  | R12  | R13  | R14  | R15  |
|------|------|------|------|------|------|------|------|------|------|------|------|------|------|------|
| 93.9 | 97.9 | 98.1 | 93.7 | 94.2 | 96.7 | 90.4 | 80.4 | 58.1 | 94.7 | 95.6 | 85.2 | 95.3 | 99.6 | 89.1 |

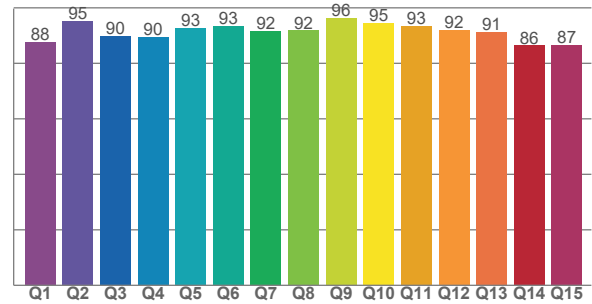
TM30 C values, 16 binned values out of total of 99 C values

| C1   | C2   | C3   | C4   | C5   | C6   | C7   | C8   | C9   | C10  | C11  | C12  | C13  | C14  | C15  | C16  |
|------|------|------|------|------|------|------|------|------|------|------|------|------|------|------|------|
| 90.5 | 92.0 | 90.5 | 94.6 | 95.5 | 95.9 | 93.5 | 98.0 | 94.5 | 91.1 | 90.1 | 89.7 | 90.6 | 86.8 | 91.7 | 84.8 |

CQS Q values

| Q1   | Q2   | Q3   | Q4   | Q5   | Q6   | Q7   | Q8   | Q9   | Q10  | Q11  | Q12  | Q13  | Q14  | Q15  |
|------|------|------|------|------|------|------|------|------|------|------|------|------|------|------|
| 87.7 | 95.2 | 89.9 | 89.6 | 92.7 | 93.5 | 91.7 | 91.9 | 96.3 | 94.6 | 93.4 | 91.9 | 91.3 | 86.4 | 86.7 |

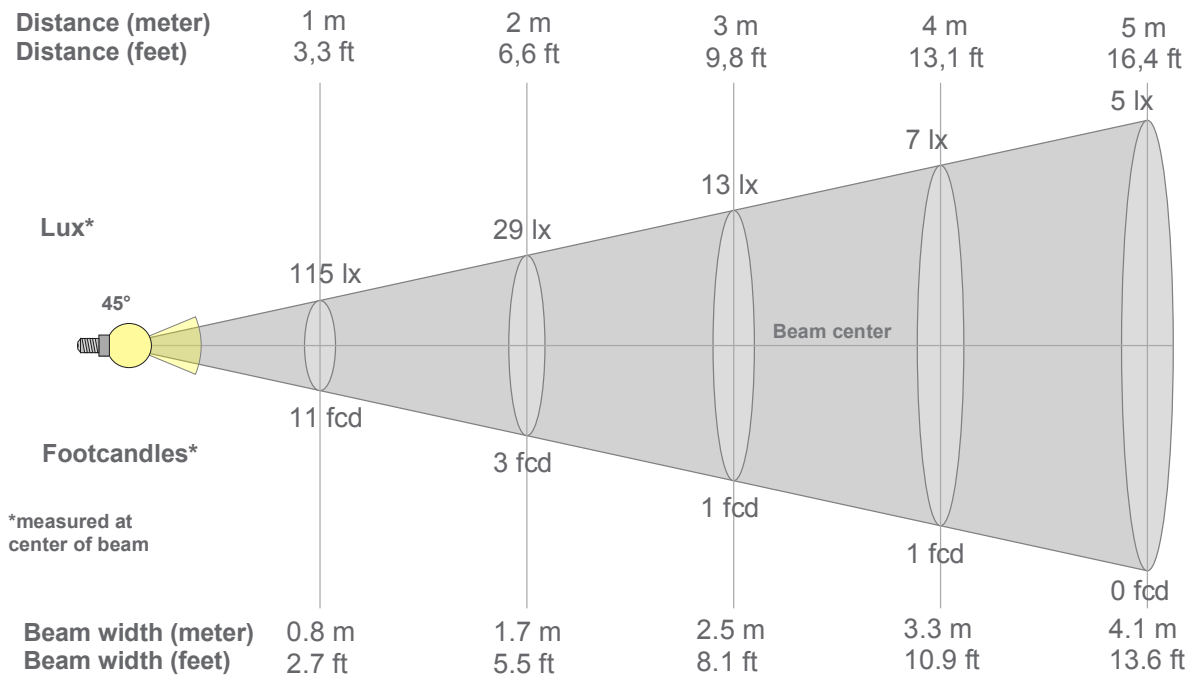
**CQS: 90.9**



**Color parameters**

| Color temperature | Color rendering index | Red component | Color fidelity | Color gamut | Color quality scale | Color coordinate cie 1931 | Color coordinate cie 1931 | Color coordinate | Color coordinate | Color deviation from black body |
|-------------------|-----------------------|---------------|----------------|-------------|---------------------|---------------------------|---------------------------|------------------|------------------|---------------------------------|
| CCT               | CRI                   | CRI R9        | TM30 Rf        | TM30 Rg     | CQS                 | x                         | y                         | u                | v                | Δuv                             |
| 3000 K            | 93.2                  | 58.1          | 91.9           | 99.4        | 90.9                | 0.437                     | 0.404                     | 0.251            | 0.348            | -0.0015                         |

**Beam details**



**Beam intensities from 1-20m**

| 1m      | 2m     | 3m     | 4m     | 5m     | 6m     | 7m     | 8m     | 9m     | 10m    | 11m    | 12m    | 13m    | 14m    | 15m    | 16m    | 17m    | 18m    | 19m    | 20m    |
|---------|--------|--------|--------|--------|--------|--------|--------|--------|--------|--------|--------|--------|--------|--------|--------|--------|--------|--------|--------|
| 3.3ft   | 6.6ft  | 9.8ft  | 13.1ft | 16.4ft | 19.7ft | 23ft   | 26.2ft | 29.5ft | 32.8ft | 36.1ft | 39.4ft | 42.7ft | 45.9ft | 49.2ft | 52.5ft | 55.8ft | 59.1ft | 62.3ft | 65.6ft |
| 115lx   | 29lx   | 13lx   | 7lx    | 5lx    | 3lx    | 2lx    | 2lx    | 1lx    | 1lx    | 1lx    | 1lx    | 1lx    | 1lx    | 1lx    | 0lx    | 0lx    | 0lx    | 0lx    | 0lx    |
| 10.7fcd | 2.7fcd | 1.2fcd | 0.7fcd | 0.4fcd | 0.3fcd | 0.2fcd | 0.2fcd | 0.1fcd | 0.1fcd | 0.1fcd | 0.1fcd | 0.1fcd | 0.1fcd | 0fcd   | 0fcd   | 0fcd   | 0fcd   | 0fcd   | 0fcd   |

**Intensities in 0° c-plane**

| 0°   | 9° | 18° | 27° | 36° | 45° | 54° | 63° | 72° | 81° | 90° | 99° | 108° | 117° | 126° | 135° | 144° | 153° | 162° | 171° |    |
|------|----|-----|-----|-----|-----|-----|-----|-----|-----|-----|-----|------|------|------|------|------|------|------|------|----|
| 115  | 0  | 0   | 0   | 0   | 0   | 0   | 0   | 0   | 0   | 0   | 0   | 0    | 0    | 0    | 0    | 0    | 0    | 0    | 1    | 1  |
| 100% | 0% | 0%  | 0%  | 0%  | 0%  | 0%  | 0%  | 0%  | 0%  | 0%  | 0%  | 0%   | 0%   | 0%   | 0%   | 0%   | 0%   | 0%   | 0%   | 1% |

**Intensities in 90° c-plane**

| 0°   | 9°   | 18°  | 27°  | 36°  | 45° | 54° | 63° | 72° | 81° | 90° | 99° | 108° | 117° | 126° | 135° | 144° | 153° | 162° | 171° |    |
|------|------|------|------|------|-----|-----|-----|-----|-----|-----|-----|------|------|------|------|------|------|------|------|----|
| 115  | 228  | 226  | 217  | 126  | 13  | 14  | 13  | 9   | 8   | 8   | 7   | 5    | 3    | 2    | 1    | 1    | 1    | 1    | 1    | 1  |
| 100% | 198% | 196% | 189% | 109% | 12% | 12% | 11% | 7%  | 7%  | 7%  | 6%  | 5%   | 3%   | 1%   | 1%   | 1%   | 1%   | 1%   | 1%   | 1% |

**Intensities in 180° c-plane**

| 0°   | 9° | 18° | 27° | 36° | 45° | 54° | 63° | 72° | 81° | 90° | 99° | 108° | 117° | 126° | 135° | 144° | 153° | 162° | 171° |    |
|------|----|-----|-----|-----|-----|-----|-----|-----|-----|-----|-----|------|------|------|------|------|------|------|------|----|
| 115  | 2  | 3   | 5   | 6   | 7   | 7   | 8   | 8   | 8   | 8   | 7   | 8    | 7    | 7    | 7    | 6    | 5    | 4    | 3    | 3  |
| 100% | 2% | 3%  | 4%  | 5%  | 6%  | 6%  | 7%  | 7%  | 7%  | 7%  | 6%  | 7%   | 6%   | 6%   | 6%   | 5%   | 5%   | 4%   | 4%   | 2% |

**Intensities in 270° c-plane**

| 0°   | 9°   | 18°  | 27°  | 36°  | 45° | 54° | 63° | 72° | 81° | 90° | 99° | 108° | 117° | 126° | 135° | 144° | 153° | 162° | 171° |    |
|------|------|------|------|------|-----|-----|-----|-----|-----|-----|-----|------|------|------|------|------|------|------|------|----|
| 115  | 229  | 224  | 207  | 120  | 14  | 0   | 0   | 0   | 0   | 0   | 0   | 0    | 0    | 0    | 0    | 0    | 0    | 0    | 0    | 0  |
| 100% | 199% | 195% | 180% | 104% | 12% | 0%  | 0%  | 0%  | 0%  | 0%  | 0%  | 0%   | 0%   | 0%   | 0%   | 0%   | 0%   | 0%   | 0%   | 0% |

| Beam angle 50% | Field angle 10% | Cutoff angle 2,5% | Intensity ratio in 120° cone | Intensity ratio in 90° cone |
|----------------|-----------------|-------------------|------------------------------|-----------------------------|
| 45°            | 221.5°          | 257.1°            | 83.2%                        | 78.8%                       |