

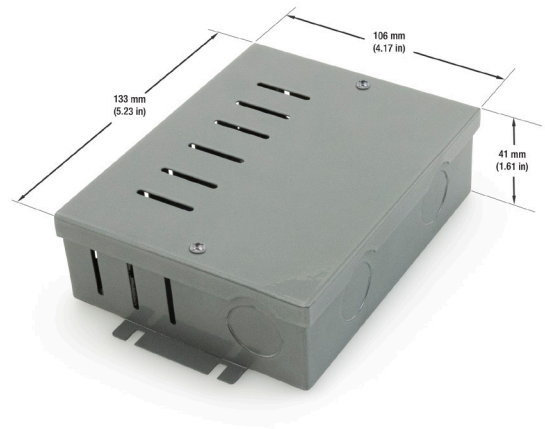
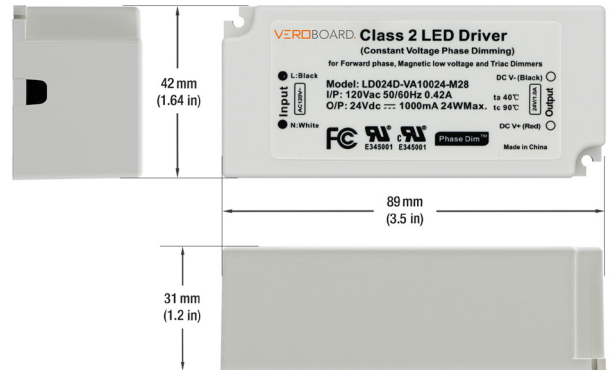
## CV Triac Dimmable LED Driver

<b>Model No:</b>	LD024D-VA10024-M28
<b>Input Voltage:</b>	120V AC
<b>Input Current:</b>	0.42A
<b>Frequency:</b>	50-60 Hz
<b>Output Voltage:</b>	24V DC
<b>Output Current:</b>	1000mA
<b>Max Power:</b>	24W
<b>Dimensions (Driver):</b>	89mm x 31mm x 42mm
<b>Dimensions (J-Box):</b>	133mm x 41mm x 106mm
<b>Ambient Temperature (Ta):</b>	40°C
<b>Case Temperature (Tc):</b>	90°C
<b>IP Rating:</b>	IP20
<b>Dimmable:</b>	Triac/Phase-Cut Dimming
<b>Wiring/Housing:</b>	Hardwire
<b>Standards:</b>	FCC/UR/cUR/RoHS

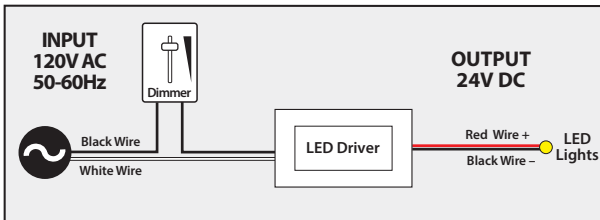
Job Name: \_\_\_\_\_

Distributor: \_\_\_\_\_

Type: \_\_\_\_\_



### Installation Diagram



### Triac Dimming

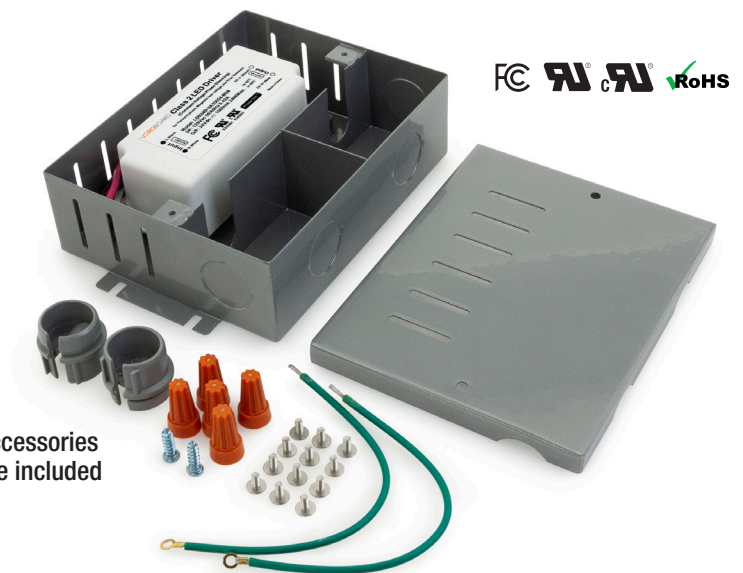
Veroboard Constant Voltage Triac Dimming LED Driver works with any standard Leading Edge MLV, TRIAC, or nearly many Lutron/ Leviton dimmers. The dimmer switch installed should be on the 120VAC side of the LED driver.

### Model: LD024D-VA10024-M28



SKU: 666561418144

### Model: LD024D-VA10024-M28-JB



Accessories are included

SKU: 666561433918