

# VEROBOARD®

Job Name: \_\_\_\_\_

Distributor: \_\_\_\_\_

Type: \_\_\_\_\_

## Mini StarLite Series



These high-quality 3 Watt round ceiling lights are available in 4 different body colours, which brings more style to your home/office environment. 2-year in-store warranty is also included with the product.

### RD24-3W-30K-WH

SKU: 666561415631

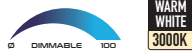


Model No:	RD24-3W-30K-WH
Voltage:	12V DC
Wattage:	3W
Colour Temperature:	3000K (Warm White)
Fixture Colour:	White
Housing Material:	Aluminum
Dimmable:	Yes
Dimensions:	Ø52mm x 44mm Depth (2.1in x 1.8in)
Cut Size:	Ø42mm (1.7in)



### RD24-3W-30K-BK

SKU: 666561415617



Model No:	RD24-3W-30K-BK
Voltage:	12V DC
Wattage:	3W
Colour Temperature:	3000K (Warm White)
Fixture Colour:	White
Housing Material:	Aluminum
Dimmable:	Yes
Dimensions:	Ø52mm x 44mm Depth (2.1in x 1.8in)
Cut Size:	Ø42mm (1.7in)



### RD24-3W-30K-BN

SKU: 666561415624

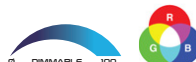


Model No:	RD24-3W-30K-BN
Voltage:	12V DC
Wattage:	3W
Colour Temperature:	3000K (Warm White)
Fixture Colour:	White
Housing Material:	Aluminum
Dimmable:	Yes
Dimensions:	Ø52mm x 44mm Depth (2.1in x 1.8in)
Cut Size:	Ø42mm (1.7in)

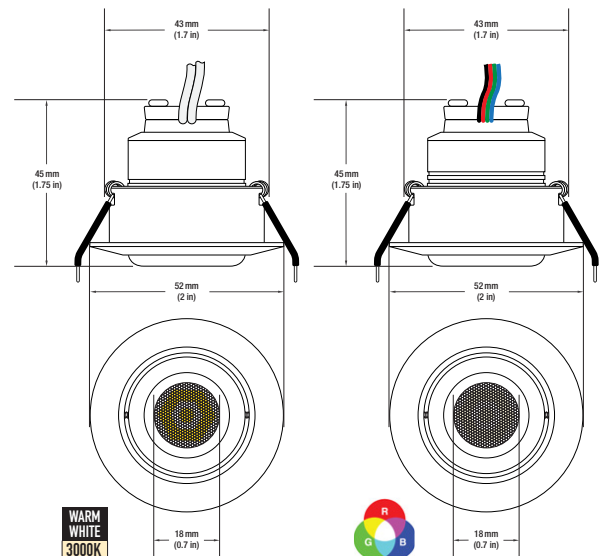


### RD24-3W-RGB-BN

SKU: 666561415648



Model No:	RD24-3W-RGB-BN
Voltage:	12V DC
Wattage:	3W
Colour Temperature:	RGB
Fixture Colour:	White
Housing Material:	Aluminum
Dimmable:	Yes
Dimensions:	Ø52mm x 44mm Depth (2.1in x 1.8in)
Cut Size:	Ø42mm (1.7in)



#### Disclaimer:

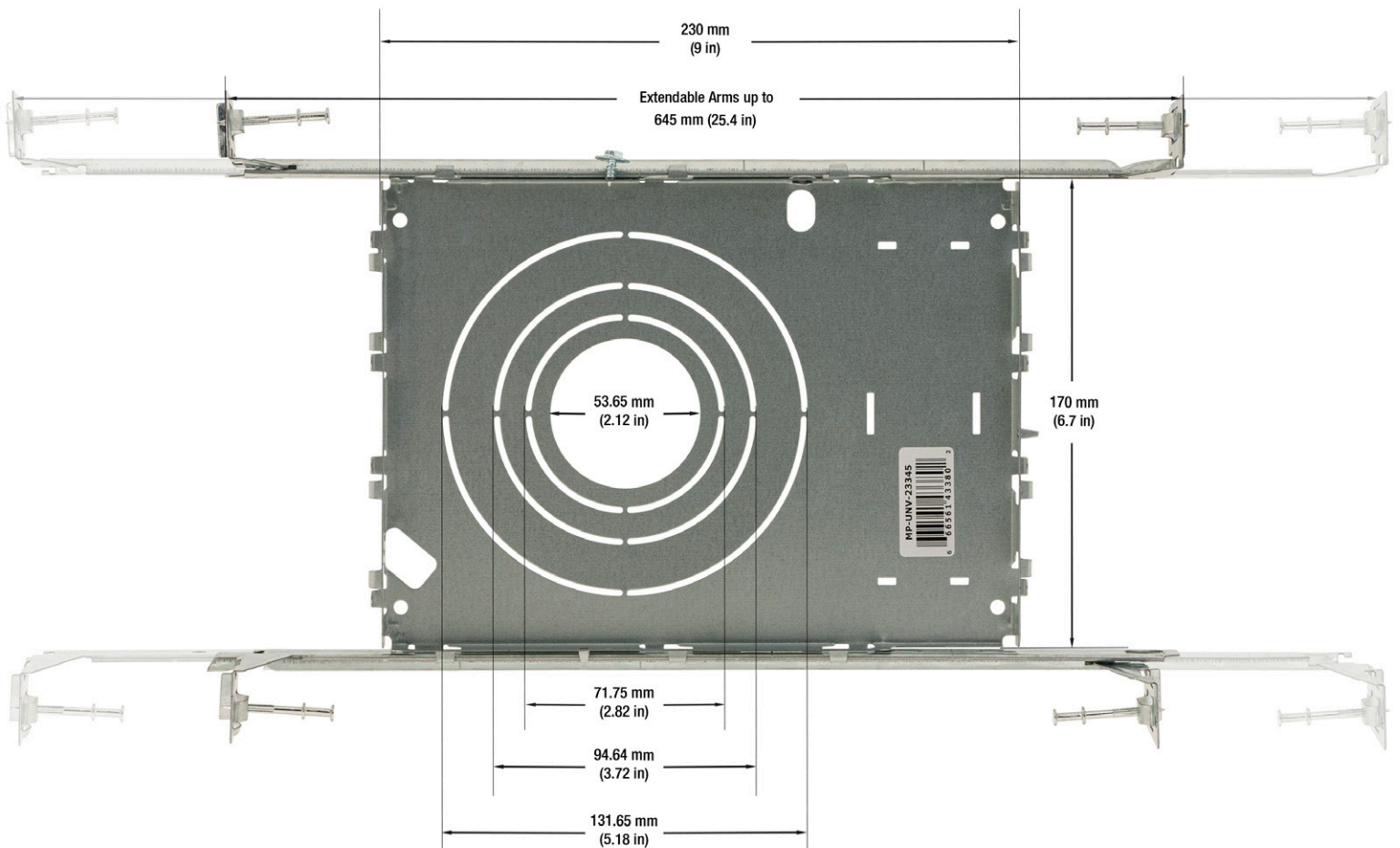
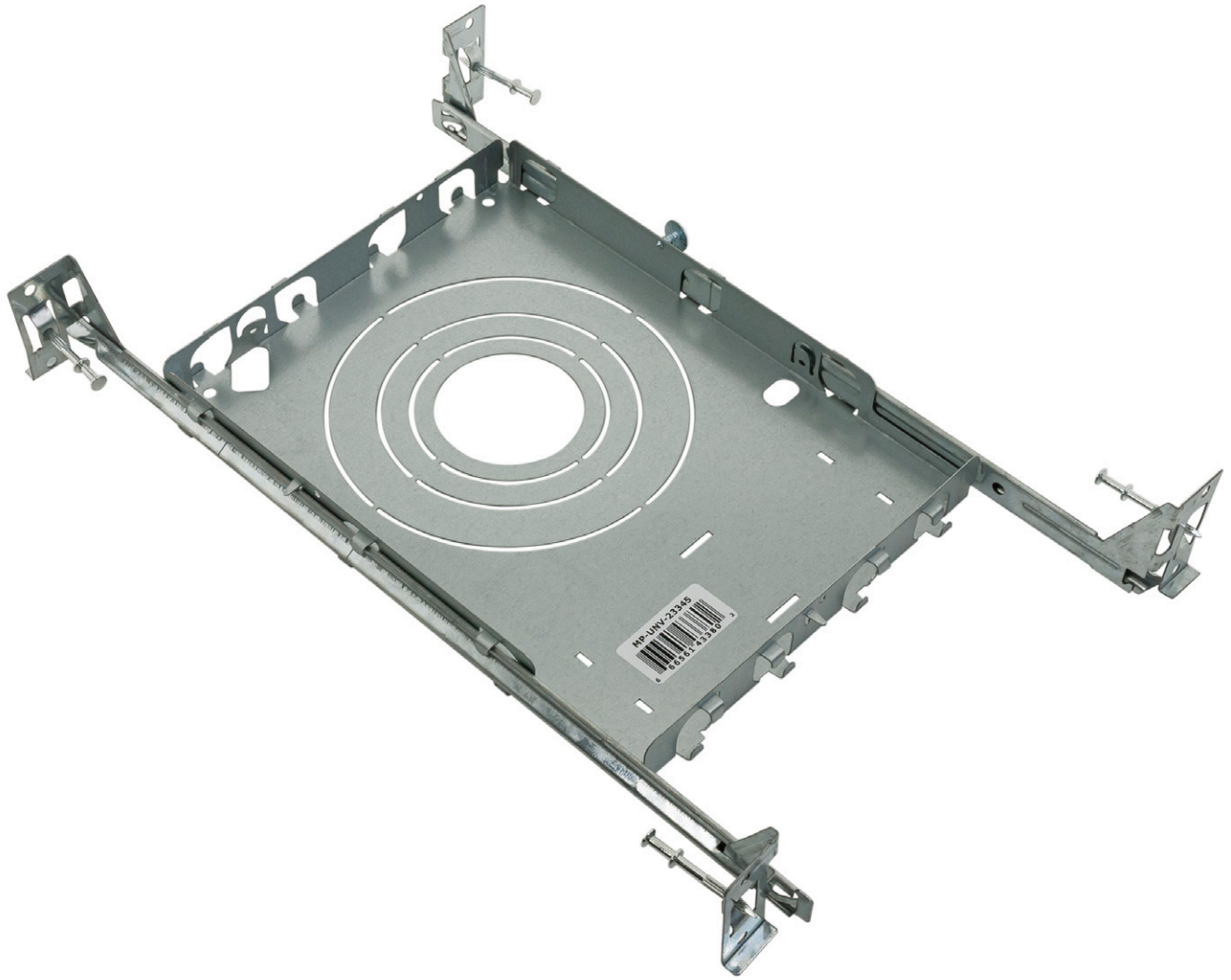
The data and information contained in this specification sheet are subject to change without notice; the ratings supplied are provided based on the product manufacturer. The information contained in this specification sheet should not be considered a warranty, expressed or implied, including, but not limited to, a warranty of merchantability or fitness for a particular purpose. In no event shall Veroboard be liable for any incidental or consequential damages resulting from the use, misuse, or inability to use the product. This exclusion applies regardless of whether such damages are sought based on breach of warranty, breach of contract, negligence, strict liability in tort, or any other legal theory.

# New Construction Universal Mounting Plate

*(Sold separately)*

New Construction Universal Mounting Plate suitable for 2, 3, 3.5, and 5-inch sizes, with two hanger bars.

Model: **VBD-MP-UNV-23345** | SKU: **666561433802**



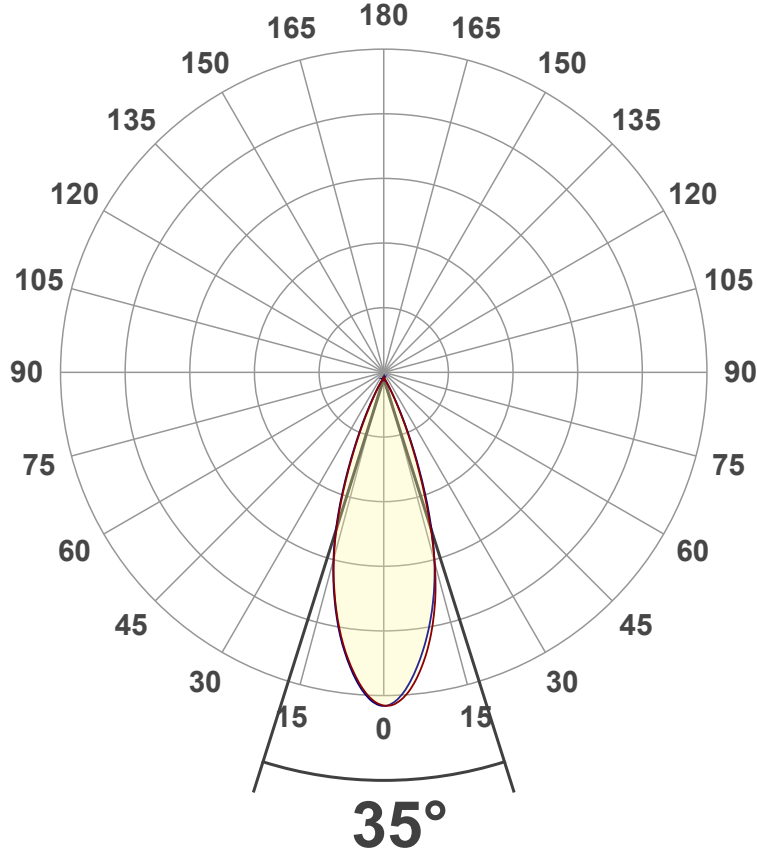
# Light Measurement Report

Print date: 2023-01-26

Measurement date and time: 2023-01-25 3:08:55 PM – Measurement no. VFR-230125-0002-MS

## Luminous Intensity diagram

Unit: 0-100% of peak intensity



## Main Values

Output (total Lumen)	210 lm
Lumen Up% / Down%	0.03% / 99.97%
Peak Intensity	580 cd
Beam Angle (50%)	35°
Beam Angle (90%)	35.1°
Beam Angle (10%)	34.7°

## Cut-off Angle

Average 2,5%	70.3°
--------------	-------

## Field Angle

Average 10%	55°
-------------	-----

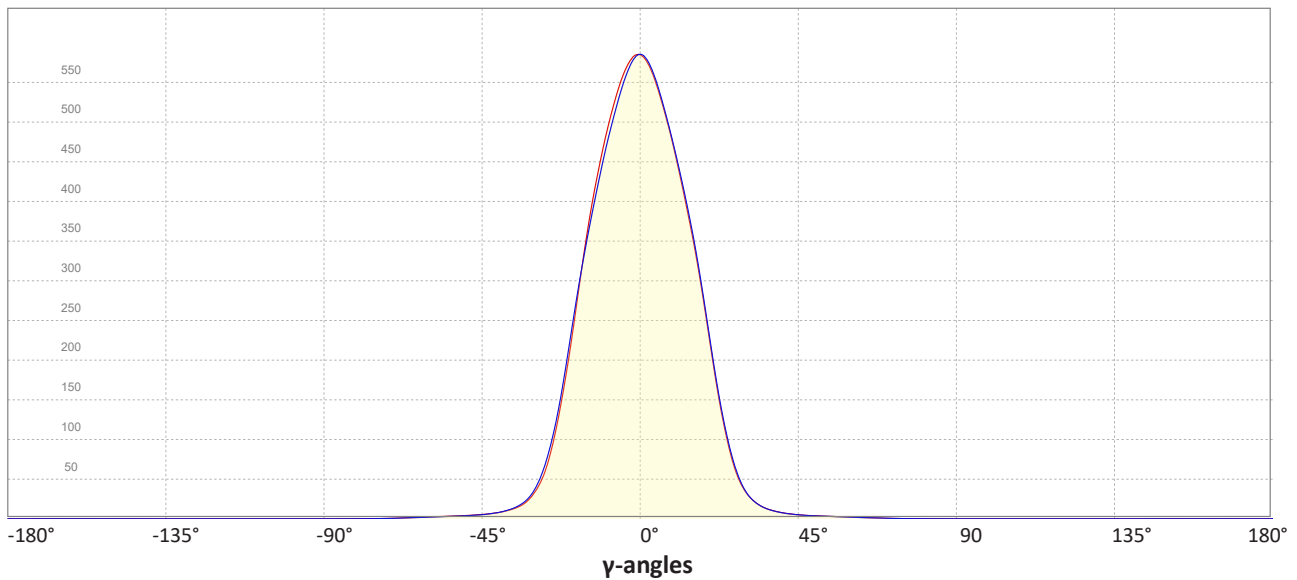
## Intensity Ratio

In 120° cone	99.1%
In 90° cone	96.9%

**C000-C180**

**C090-C270**

## Linear distribution diagram - Intensity (candela) vs $\gamma$ -angle



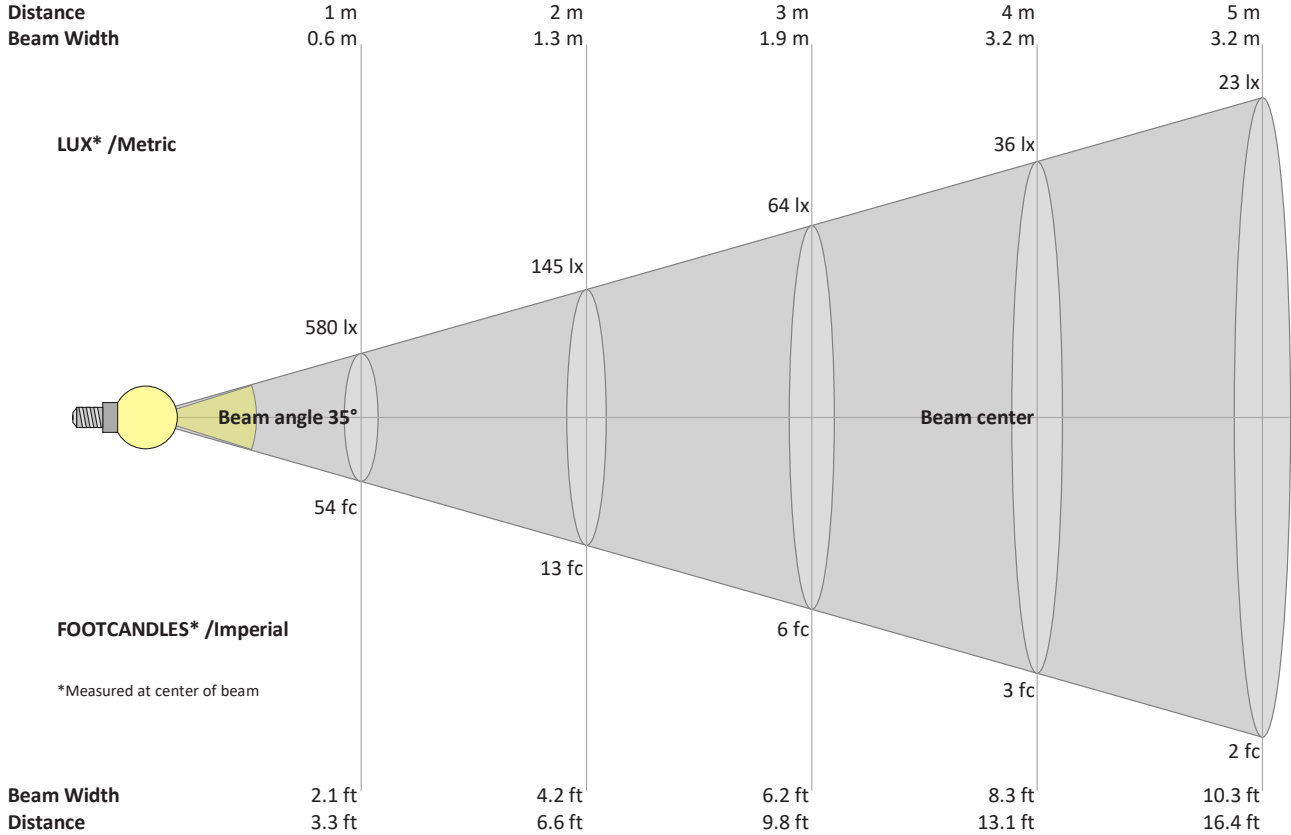


# Light Measurement Report

Print date: 2023-01-26

Measurement date and time: 2023-01-25 3:08:55 PM – Measurement no. VFR-230125-0002-M5

## Beam Details



### Beam intensities from 1 – 20 m

1	2	3	4	5	6	7	8	9	10	11	12	13	14	15	16	17	18	19	20	m
3.3	6.6	9.8	13.1	16.4	19.7	23	26.2	29.5	32.8	36.1	39.4	42.7	45.9	49.2	52.5	55.8	59.1	62.3	65.6	ft
580	145	64	36	23	16	12	9	7	6	5	4	3	3	3	2	2	2	2	1	lux
53.9	13.5	6	3.4	2.2	1.5	1.1	0.8	0.7	0.5	0.4	0.4	0.3	0.3	0.2	0.2	0.2	0.2	0.1	0.1	fc

### Intensities in 0° c-plane

0°	2°	4°	6°	8°	10°	12°	14°	16°	18°	20°	22°	24°	26°	28°	30°	32°	34°	36°	38°	y
580	577	563	540	510	474	433	386	331	271	211	157	111	75	50	33	23	17	13	10	cd
100%	100%	97%	93%	88%	82%	75%	67%	57%	47%	36%	27%	19%	13%	9%	6%	4%	3%	2%	2%	of 0°val

### Intensities in 90° c-plane

0°	2°	4°	6°	8°	10°	12°	14°	16°	18°	20°	22°	24°	26°	28°	30°	32°	34°	36°	38°	y
580	573	554	526	494	458	419	377	331	277	220	165	118	80	53	35	24	17	13	10	cd
100%	99%	96%	91%	85%	79%	72%	65%	57%	48%	38%	28%	20%	14%	9%	6%	4%	3%	2%	2%	of 0°val

### Intensities in 180° c-plane

0°	2°	4°	6°	8°	10°	12°	14°	16°	18°	20°	22°	24°	26°	28°	30°	32°	34°	36°	38°	y
580	570	550	523	491	455	415	372	326	273	216	161	114	77	51	34	24	17	13	10	cd
100%	98%	95%	90%	85%	78%	72%	64%	56%	47%	37%	28%	20%	13%	9%	6%	4%	3%	2%	2%	of 0°val

### Intensities in 270° c-plane

0°	2°	4°	6°	8°	10°	12°	14°	16°	18°	20°	22°	24°	26°	28°	30°	32°	34°	36°	38°	y
580	573	554	527	494	459	418	375	328	277	222	168	121	84	56	37	25	18	14	10	cd
100%	99%	96%	91%	85%	79%	72%	65%	57%	48%	38%	29%	21%	15%	10%	6%	4%	3%	2%	2%	of 0°val