



**McDonnells**  
suppliers to the food trade

# BUTCHERS CATALOGUE

Edition 2024 - 1



[www.mcdonnells.ie](http://www.mcdonnells.ie)



[sales@mcdonnells.ie](mailto:sales@mcdonnells.ie)



**McDonnells**  
suppliers to the food trade

McDonnells are a long established specialist in the food trade. We offer a wide range of food seasonings, equipment and sundries to the butchers, abattoir and factory, deli, chef, fish, catering, bakery and retail sectors throughout Ireland, Northern Ireland and the UK.

We are constantly updating our product ranges in line with HACCP requirements and product innovations.

McDonnells offer the following services: Knife sharpening and engraving, knife safety training, counter ticketing design, counter layout and display design, humane stunner use and maintenance.

Please contact our sales team should you require items not shown in this catalogue.

**Tel: +353 1 6778123**

**Fax: +353 1 6774491**

**email: sales@mcdonnells.ie**

Customers are also welcome to visit our showrooms:

**Unit 15**

**Northern Cross Business Park**

**North Road**

**Dublin 11**

**D11 W5WN**

Monday - Friday 8.00am to 5.00pm

Visit our website at **www.mcdonnells.ie** to order on-line.



#### Terms and Conditions

Transaction payments can be made by cash, cheque, postal or money order, on-line banking or major Debit and Credit Cards. All goods sold are subject to our standard terms and conditions of sale. These can be viewed and downloaded from our website [www.mcdonnells.ie](http://www.mcdonnells.ie) or sent by email or post.

#### Delivery

All orders received before 3pm daily will be delivered as follows:

All Ireland: 24-48 Hours

All UK: 48-72 Hours

Please contact us for International delivery rates.

#### Product Returns Policy

Damages or shortages must be reported within 24 hours of receipt of the goods. Should goods need to be returned, notification must be in writing within 3 days of receipt of same, otherwise you will incur a restocking charge.

Any special orders cannot be exchanged or returned.



[www.mcdonnells.ie](http://www.mcdonnells.ie)



[sales@mcdonnells.ie](mailto:sales@mcdonnells.ie)

# Professional Butchers Knives made in Germany



## Ergogrip Knives

- Hygienic
- Fatigue free handle
- HACCP colours
- Ergonomic



D8225915  
6" Straight Boning Knife



D8299113  
5" Rigid Curved Boning Knife



D8299115  
6" Rigid Curved Boning Knife



D8298213  
5" Semi-flexi Boning Knife



D8298215  
6" Semi-flexi Boning Knife



D8298113  
5" Full-flexi Boning Knife



D8298115  
6" Full-flexi Boning Knife

## Expertgrip Knives

- Polished edge
- Soft grip
- Open Handle
- Safe non Slip



D8225915  
6" Straight Boning Knife



D8219113  
5" Rigid Curved Boning Knife



D8219115  
6" Rigid Curved Boning Knife



D8218213  
5" Semi-flexi Boning Knife



D8218215  
6" Semi-flexi Boning Knife



D8218113  
5" Full-flexi Boning Knife



D8218115  
6" Full-flexi Boning Knife

# WORLD'S BEST STEAK KNIVES & CHOPPERS



D8238530  
12" Butchers Steak Knife  
D8238530  
10" Butchers Steak Knife



D8234826  
10" Butchers Steak Knife



D8225330  
12" American Steak Knife  
D8225326  
10" American Steak Knife



D8242521K  
8" Butchers Knife with Kullen

The steak knife has a long and curved blade that allows you to make a long, pulling cut. It is used to cut large pieces of meat. You can also use it to remove skin and fatty fibres. It is very suitable for shearing and covering. The steak knife is used as a versatile tool in slaughterhouses and butcher's shops.



D8200618  
7" Straight Wide Boning Knife



RF68383  
22cm Cleaver  
Red Handle

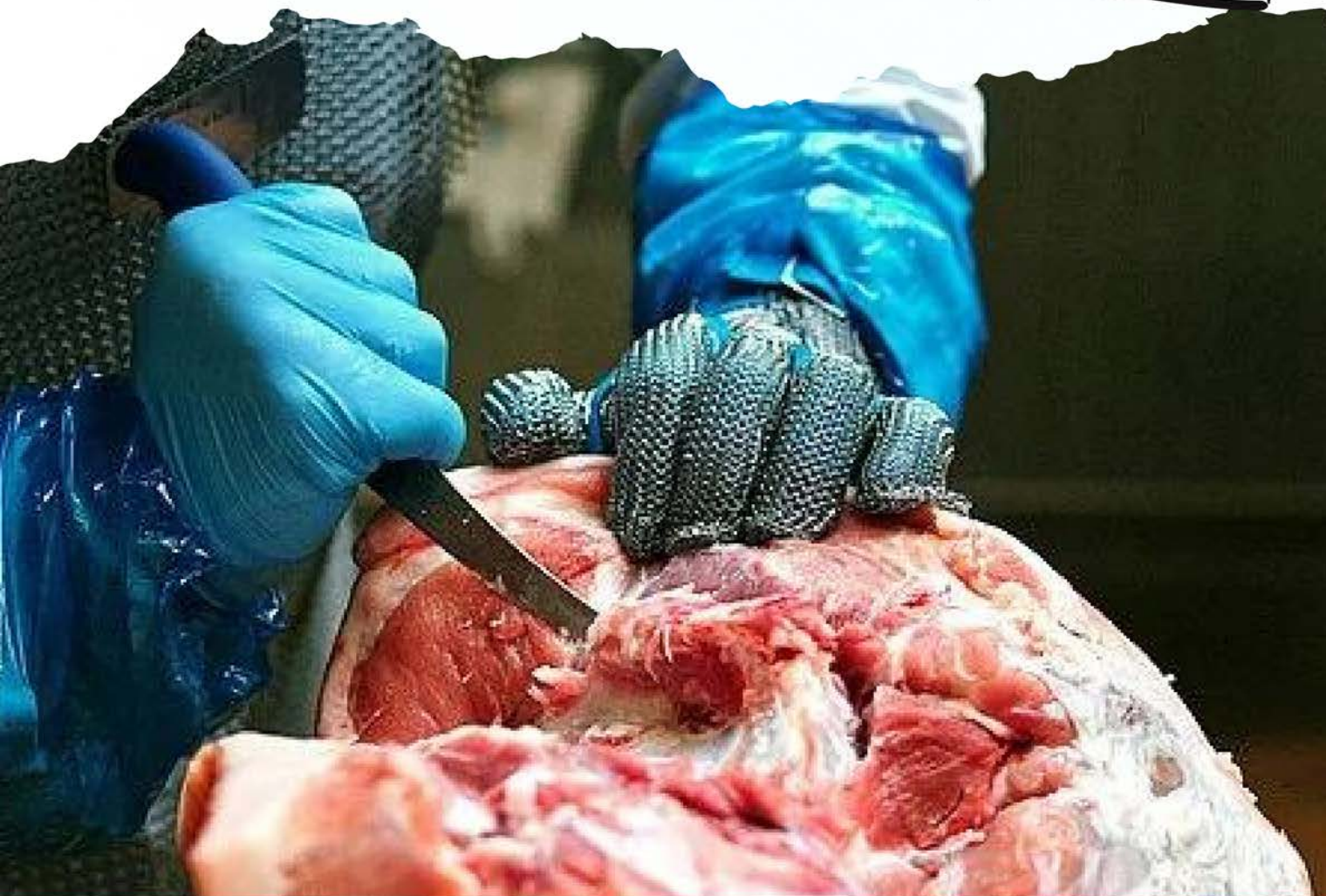
# MUST - HAVE STEAK KNIFE AND BONING KNIFE SET

**DSPM3**

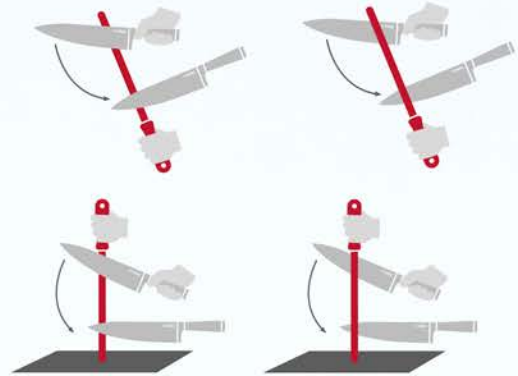
**Contains:**

D8238526 10" Ergo Grip Butchers Steak Knife (red)

D8298215 6" Ergo Grip Butchers Curved Semi-flexible Boning  
Knife (red)



# YOUR CHOICE OF SHARPENING STEEL CUTS



**D7650428**  
11" Multi Cut Steel



**D7655130**  
12" Rnd Regular Steel  
**D7655330**  
12" Oval Regular Steel



**D7755130**  
12" Eurocut Rnd  
Regular Steel



**D7317130**  
12" Regular Steel  
Non Slip Handle  
**D7317135**  
14" Regular Steel  
Non Slip Handle



**ZFN1250**  
12" Oval Regular Steel  
**ZFP1250**  
14" Oval Regular Steel



**D7136000**  
Whetstone



**D9005000**  
Pickle Pump



**D7598330**  
12" Oval Dikoron Steel

**GOOD QUALITY TOOLS NEED CARE.  
THIS INCLUDES REGULAR SHARPENING.  
NO BUTCHER SHOULD BE WITHOUT A GOOD  
SHARPENING STEEL OR KNIFE SHARPENER.  
THE MORE OFTEN YOU SHARPEN YOUR KNIVES,  
THE LONGER THEY WILL STAY SHARP WITH  
MAXIMUM EDGE RETENTION.**

# EASY USE RAPID STEELS



Our Rapid Steel features an ergonomic design for a better and safer grip. Thanks to the robust tension springs and the stainless steel sharpening rods, maintenance and care are easy and inexpensive. The mechanics of the device are safely and hygienically protected in a locked mechanism box.



**D9008400**  
Magneto Steel Hyper Drill  
Also available in polish D9008500



**D9008100**  
Rapid Steel Hyperdrill ( Fine Cut )  
Also available in polish D9008000



**D9008600**  
Silver Steel Hyperdrill ( Fine Cut )  
Extension handle also available



**RK99701**  
Stainless Steel Knife Sharpener



**D9008200**  
Master Steel Hyperdrill ( Fine Cut )  
Also available in polish D9008300

# KNIFE SHARPENER MAGNETO STEEL

**D9008400**

**Magneto Steel Hyper Drill**

## SHARP KNIVES IN A FLASH

A simple drawing motion leads to the optimum cutting edge. In addition, the integrated magnets guide the knife into the sharpening unit with angular accuracy. The result is a precise cutting edge with an optimum bracket. Another positive side effect is that the abrasive dust sticks to the magnets.



**BEST  
CHOICE**





# SHARPENING MADE EASY

## D9805000

### RS 150 DUO Grinding and Honing Machine

- This two-step process machine provides both grinding and honing
- Diamond coated wheels gives quick grinding
- Ceramic honing stone produces a fine edge
- Effective and fast sharpening
- Belt driven no need for water cooling
- Reduced knife consumption
- Safe and easy to use Increased throughput due to sharp knives



Grinding  
Wheels and  
spare parts  
in stock

D982103482 Grinding Wheels set for RS75/150



# SHARPENING MADE EASY



**D9805000**

**RS 150 DUO Grinding and Honing**

This two-step process machine provides both grinding and honing. Its diamond coated wheels gives quick grinding, while the ceramic honing stone produce a fine edge. Suitable of all a butchers knife sharpening needs.



**D9806000**

**RS 75 Grinding Machine**

Small sharpening machine for butchers. Effective sharpening with minimal knife consumption. Fast, safe and efficient. Easy to operate. Long wearing diamond coated sharpening wheels.

Grinding  
Wheels and  
spare parts  
in stock

**D982103482**

Grinding Wheels set for RS75/150

**D982090251**

Honing Stones RS150 SM110/111



**D9820000**

**SM-110 Water Cooled Grinding and Honing Machine**

Holding magnets for grinding angle. Low knife consumption grinding. Reversible grinding wheels.



**D9821000**

**SM-111 Water Cooled Grinding and Honing Machine**

Holding magnets for grinding angle. Low knife consumption grinding. Reversible grinding wheels. Honing wheels. Buffing/polishing wheel.

Grinding  
Wheels and  
spare parts  
in stock

**D982090029**

Grinding Wheels for  
SM110/Sm11

# GROW YOUR BUSINESS MASTER BUTCHER STAND



# MORE PROFIT FOR THE MASTER BUTCHERS



**DSPM3 Butchers Knife Kit**  
Contains:  
**D8238526** 10" Ergo Grip Butchers Steak Knife (red)  
**D8298215** 6" Ergo Grip Butchers Curved Semi-flexible Boning Knife (red)



**D8570009**  
ProDynamic Kitchen Knives  
Set of 3



**D85700102**  
Knife & Peeler Set



**D8570004**  
ProDynamic Kitchen Knives  
Set of 3



**D8570003**  
Utility knives  
Set of 4



**D8522000**  
Utility Knife Retail Display Box,  
of 40  
Purple/Turquoise



**D8523000**  
Utility Knife Retail Display Box,  
of 40  
Apple Green/Pink

**Grow your business**

Think Bigger – McDonnells has the Best Retail Sets for every Kitchen.



# SAWS AND BLADES

## Large volume heavy duty Bandsaw Blades

This (AKH) series of Bandsaw Blades has the strength to stand up to the rigors of high volume, high feed, heavy duty operation. Long lasting, durable hardened tipped blade. Available in imperial and metric sizes to suit all makes and models of Bandsaws. (minimum order quantities may apply)

### Blade Sizes

- AKH91 AKH154
- AHK98 AHK2910
- AHK112 AHK2930
- AKH124 AHK3307
- AKH126 AHK3607

Other sizes available on request.

Biro and butcher boy band saw service kits available.



## KAM-LOK Professional Hand Saws

Featuring the original Kam-Lok quick change lever. Hand crafted from the finest grade stainless steel, with a solid, high strength polymer handle.

Featuring the original Kam-Lok quick change lever. Hand crafted from the finest grade stainless steel, with a solid, high strength polymer handle.

### Saws Replacement Blades

- |                   |                   |
|-------------------|-------------------|
| AHS17 17.5" Frame | AHB17 17.5" Blade |
| AHS20 20" Frame   | AHB20 20" Blade   |
| AHS22 22" Frame   | AHB22 22" Blade   |
| AHS25 25" Frame   | AHB25 25" Blade   |



Replacement handles available 8022

## DOUBLE-CUT Mincer Knives and Plates

The Atlanta SharpTech DOUBLE-CUT, plate and Knife System is made from high grade steel, for long life and durability.

### Mincer Knife Sizes

A12DCK

### Mincer Knife Sizes

A22DCK

### Mincer Knife Sizes

A32DCK

### Size 12 Mincer Plates

- A12DCP1 - 3.5mm 1/8"
- A12DCP2 - 5mm 3/16"
- A12DCP3 - 9mm 3/8"

### Size 22 Mincer Plates

- A22DCP1 - 3.5mm 1/8"
- A22DCP2 - 5mm 3/16"
- A22DCP3 - 9mm 3/8"

### Size 32 Mincer Plates

- A32DCP1 - 3.5mm 1/8"
- A32DCP2 - 5mm 3/16"
- A32DCP3 - 9mm 3/8"

Available to suit American and European makes of mincers  
Other sizes available on request.



# Care of Mincer Knives and Plates



User guide to obtaining top performance from Atlanta SharpTech, DOUBLE-CUT, Mincer Knives and Plates.

- 1 Never run grinder dry**  
A dry plate can heat up to a red hot 1800°F / 982°C within three minutes. Always have meat in the hopper and lubrication on the plate and knife cutting edges.
- 2 Always match cutting edges**  
Always use the same plate and knife together. Always tighten bolts holding machine head and gear box **first**. Then install plate, knife and end ring. **Never tighten end ring first**.
- 3 Never over tighten the end ring**  
This only creates excessive friction and heating which eventually leads to plate and knife breakage and possible damage to the grinder.
- 4 Clean frequently and thoroughly**  
Be sure to remove all meat buildup from the plate surface and edge and also from its seating area on the grinder ring so it will fit perfectly. Clean threads on the head so the end ring will tighten easily. Then, before operating, **always lubricate plate and knife with our food grade oil (S403) or meat fat**.



**NEW**

# **PREMIUM SAFETY FOR BUTCHERS**

# EXTRA COMFORT

NEW  
products



## WB950

Slipper LOW safety

**Light and very comfortable premium safety shoe**

- Composite protective toe cap (metal-free)
- Upper: water resistant and breathable
- Lining: antibacterial and breathable
- Sole: PU / PU with shock absorbing, non-slip
- Insole: ergonomic, antistatic and removable
- Sizes: 36 - 48
- Colours: Upper material: white | Sole: blue



## S064N

### Knife Pouch

Perfect for holding Steak Knives and Boning Knives.

- Made of special plastic components
- Robust material for long durability
- Safe and hygienic
- With removable and disassembled plastic inserts
- Sterilisable, easy to clean



## S067N

### Butchers belt with lock and metal chain/snap hook

- Made of TPU
- Robust material for long durability
- Safe and hygienic
- With metal chain/snap hook for sharpening steel
- Sterilisable, easy to clean



# NECKBAND WEARING SYSTEM

NEW

## Heavy Duty White and Blue Apron

Light and very comfortable

The traditional meat apron in heavy and robust design for intensive requirements. Particularly suitable for butchers.

- Made of polyester fabric coated on both sides with NBR-rubber
- Material: medium-heavy
- Open edge or hemmed
- Washable
- Permanently flexible
- Waterproof
- Resistant against animal oils and fats, strong detergents and some acids and alkaline liquids
- Heat resistant



**WMSRAHW10005**

Heavy Duty White Apron  
90x120mm



- firmly roasted and additionally sewn neckband on both sides made of NBR material
- with metal eyelets



**WMSRAHB10205**

Heavy Duty Blue Apron  
90x120mm

# APRONS, HATS, COATS AND GLOVES



**WMLAN**

Apron Twin Stripe 90x100cm  
Available in Red , Navy, Green and  
Blue.



**WMSRAF**

Blue Rubber Apron 48"



**WMR40203**

Butchers Nylon Apron NEW Style 70  
X 110CM  
Available in Printed Red , Navy and  
Blue.



**WMSWC**

Plain White Coat  
Available in different sizes. S36-S48  
Special Sizes on Request.



**WMCH**

Finger Fix  
Pack of 100



**WD720**

**Cut Resistant Glove**

A versatile cut protection glove - with innovative  
high-performance fibres, this glove is extremely  
robust and durable.

- Made of high-tech yarns with stainless steel core
- Free from glass fibers
- Extra long cuff
- High wearing comfort
- Good tactile sensitivity



**WMH110**

White Trilby Hat

**WMH110B**

Black Trilby Hat



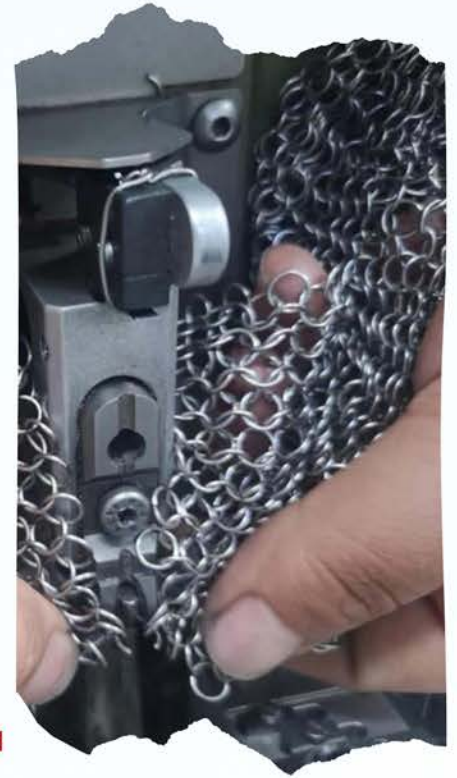
# METAL MESH GLOVES WITHOUT CUFF

meshFlex® Metal ring mesh gloves STANDARD made of stainless steel ring mesh with replaceable TPU plastic strap and detectable stainless steel ring mesh.

The ErgoFitSystem offers maximum wearing comfort and, thanks to the smaller stainless steel ring mesh (RingØ: 3.8 mm) compared to other gloves, optimum safety against stab and cut injuries.

The STANDARD model is available in different cuff lengths. The proven and high-quality press-stud fastener makes the glove easy to put on and take off.

In addition, the TPU closure strap can be easily replaced (without tools). This also allows the glove to be turned quickly and easily for left-handers.



## WMCG810

### Chainmail Glove

Plastic Strap

all sizes available

Olive	XXL
Orange	XL
Blue	L
Red	M
White	S
Green	XS
Brown	XXS

# CASH SPECIAL STUNNER

**FREE**  
STUNNER CHECK  
**CERTIFICATE of Calibration**  
with your next service









## TAS

### CASH Special

.22 Ergonomic Pistol shaped design, trigger operated stunner suitable for use on all animals, porcine, ovine, bovine. "Rolling Block" firing mechanism provides effective safety.

(.25 Calibre available).

Box of 1000

.22 Cartridge Range					
Code	Colour	Nominal Grainage	Suggested Use	Species	
TASPK	Pink	1.25 GRAIN	For small animals lambs and pigs		
TASP	Purple	2.5 GRAIN	For light cattle and pigs under 100kg		
TASG	Green	3 GRAIN	For average sized cattle and pigs over 100kg		

Repair Service Available



**T812**  
Flange Washer



**T811**  
Stop Washer



**T816**  
Buffer (pack of 8)



# SPECKLED BLACK KATA CROKS



## ICONIC KATA RANGE



### KATA COLLECTION

RECOMMENDED

The stand comes complete with :

- 2 x Kata Crock 175x520x70mm GTKT4228
- 1 x Kata Crock 260x345x40mm GTKT4236
- 1 x Kata Crock 260x345x70mm GTKT4226
- 1 x Kata Crock 260x345x100mm GTKT4216
- 2 x Kata Crock 175x260x100mm GTKT4212

Size : 780x695mm



# MASTER BUTCHER STAND



## Plexiline System Master Butchers Dishes

The stand comes complete with :

4 x Plexiline Dishes 280x280x50mm XD28285

2 x Plexiline Dishes 280x280x20mm XD2828

6 x Plexiline Dishes 280x210x50mm XD28215

3 x Plexiline Dishes 280x210x20mm XD2821

**Size : 840x1400mm**



## MIX & MATCH PLEXILINE

### Plexiline System Master Butchers IDEAS

**The stand comes complete with :**

**2 x Plexiline Dishes 420x280x20mm XD4228**

**2 x Plexiline Dishes 420x280x50mm XD42285**

**2 x Plexiline Dishes 280x210x50mm XD28215**

**2x Plexiline Dishes 280x210x20mm XD2821**

**Size : 840x840mm**

RECOMMENDED





## PLEXILINE CORNER DISPLAY UNIT 9

**XDQ26265**  
Top Quad Dish (1)  
260 x 260 x 50mm

**XDQTRIR**  
Right Corner Dish for Quad (1)  
300 x 500 x 50mm

**XDQ26225**  
Lower Quad Dish (4)  
265 x 50mm 20°

**XDQTRIL**  
Left Corner Dish for Quad (1)  
300 x 500 x 50mm

**XDQ26455**  
Mid Quad Dish (2)  
265 x 50mm 45°

**XFTB0333**  
Display Step Quadrant (1)  
790 x 790 x 65mm



Plexiline Quarter Circle Display



## TRADITIONAL STAINLESS STEEL TRAYS AND DISHES

**The stand comes complete with :**

4 x XSST290210

2 x XSST5821

2 x XSST16

**Size : 780x695mm**

**Other sizes available**



# MELAMINE FRAME PLATTERS

NEW



Highlight your products with our great new products  
Melamine Frame platters !

Designed for fresh food areas , the elevated profile prevents liquid from spilling over.

Silicone feet are provided to prevent skating in the counter!  
Three colours available.



- GTCN2311B**  
Urban Black Melamine Dish 280 x 210 x 50mm
- GTCN2318B**  
Urban Black Melamine Dish 420 x 280 x 50mm
- GTCN2321B**  
Urban/Black Melamine Tray 280x210x21mm
- GTCN2328B**  
Urban/Black Melamine Tray 420x280x21mm



# GOURMET ENAMELWARE, DISHES AND PANS

**HOT**  
counter



**RWB00496**  
Dish (1lt)  
260 x 170 x 48mm Colour:  
black/cream

**RWB0050**  
Dish  
290 x 180 x 50mm Colour:  
black/cream

**RWB0382**  
Deep Pan with Handles  
Ø 240 x 97mm Colour black/cream

**RW060322**  
Round Pan with Handles  
Ø 300 x 57mm Colour: black

**RW060319**  
Round with Handles  
Ø 300 x 57mm Colour: red/ black

**RW060222**  
Round Pan with Handles  
Ø 260 x 46mm Colour: black

**RW060219**  
Round Pan with Handles  
Ø 260 x 46mm Colour: black

**RW060122**  
Round Pan with Handles  
Ø 240 x 42mm Colour: black

**RW038322**  
Deep Pan with Handles  
Ø 300 x 125mm Colour: black

**RW038222**  
Deep Pan with Handles  
Ø 240 x 97mm Colour: black

**RW038122**  
Deep Pan with Handles  
Ø 200 x 93mm Colour: black



# VINTAGE FOOD BOARDS



XPV404  
Paddle Vintage Stone Board  
400 x 200mm



XPV402  
Pebble Vintage Stone Board  
300 x 280mm

XPV11  
1/1 Vintage Stone Board  
530 x 325mm



XPV403  
Egg Shaped Vintage Stone Board  
400 x 300mm

XPV12  
1/2 Vintage Stone Board  
325 x 265mm

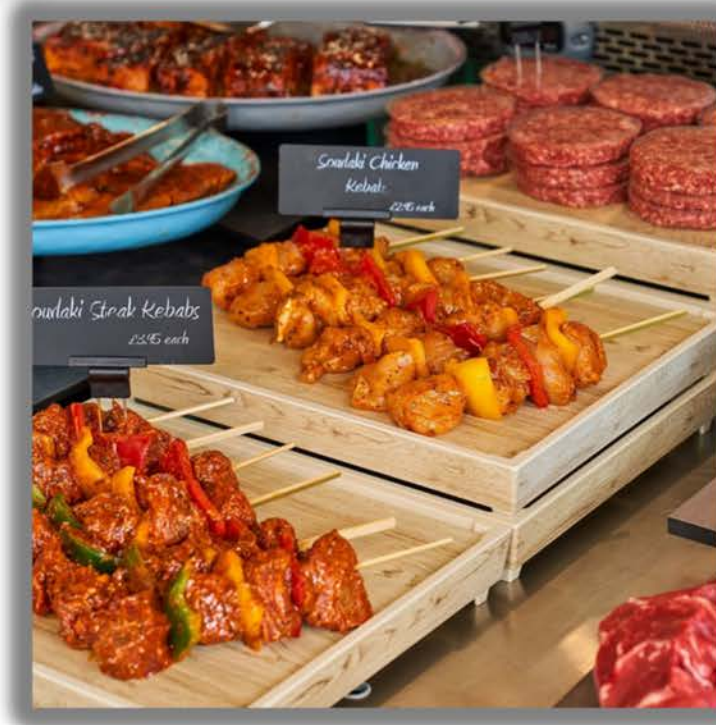
XPV200300  
Vintage Stone Board  
200 x 300mm



XPVR300  
Round Vintage Stone Board  
Ø 300mm

- Wood effect textured surface
- Safe for hot plates and hot lamps up to 140°C
- Safe for fridges and chill units to minus 40°C
- Dishwasher safe

# COUNTER RISERS



**GTB36**  
Three Step Riser Unit  
750 x 600 x 90mm

**GTB37**  
Three Step Riser Unit  
750 x 300 x 90mm

**XD500**  
Three Step Riser Unit  
500 x 800 x 80mm

**XD600400**  
Three Step Riser Unit  
600 x 400 x 120mm



**GTWD3412**  
Tura Melamine Wood Effect Crate Riser 1/2  
Black or white available



**GH14**  
Silicon Riser  
Ø 90 x 45 x 30mm  
Colours: black, white

**GH117**  
Universal Riser  
119 x 119 x 50mm  
Colours: black, white

**GH119**  
Pedestal Stand  
170 x 170 x 100mm  
Colours: black, white

# IRELAND'S BEST MARINADES

**Marinades give a unique flavour to meat, fish and vegetables. They refine meats, give flavour and enhance the appearance of meat products.**

**In the butcher's trade, meat refinement is an important convenience factor. It has also become essential for professional and amateur cooks.**

**Reasons why  
we are the best marinade supplier:**

- ✓ Excellent taste
- ✓ Great variety
- ✓ From chilli-hot, to piquant, fruity and fresh
- ✓ Best meat refinement Optimal marinade gloss
- ✓ Easy to handle and efficient to process
- ✓ High yield & no loss of meat fluids
- ✓ Colour stability
- ✓ Meat does not dry out



# BEST SELLING MARINADE

Ireland's  
Best



## Smoky Spice-n Whiskey Marinade QS132

A blend of Cajun spices and Bourbon Whiskey. Our Smoky Spice-n Whiskey Marinade will soon become your customers' favourite. It is a classically refined sauce with a mouth-watering flavour combination of two exuberant ingredients.

Made with only the finest rapeseed oil to create a remarkable product designed to stand out in your butchers counter displays.





# BEST MARINADES



**Tomato & Pepper**  
Water based tangy red marinade with visible herbs.  
**Best for Chicken**  
QS102



**Peeking**  
A deep red marinade with lots of herbs and spices.  
**Best for Beef**  
QS113N



**Pepper & Wild Garlic**  
A ready to use marinade with garlic, pepper & onion.  
**Best for Steaks**  
QS511N



**Char-Sui**  
Flavours of spices, caramel sugar and garlic.  
**Best for Pork & Chicken**  
QS134



**SMOKY SPICE'N WHISKEY**  
Delicious blend of Cajun spices and Bourbon Whiskey.  
**Great on Beef and Lamb**  
QS132



**Spanish Harbour**  
Old traditional marinade with garlic and Spanish flavour.  
**Best for Potatoes**  
QS119N

# BEST MARINADES



**TEX MEX**  
Oil based marinade with Mexican Spices.  
**Best for Veggies & Beef**  
QS110



**Greek Passion**  
Spicy brown marinade with Greek style spices & herbs.  
**Best for Lamb**  
QS130N



**Piri Piri**  
Oil based marinade with chillies,peppers & hint of lemon.  
**Best for Chicken**  
QS115N



**Chilli Willi**  
Oil based blend of sweet spices with chillies & peppers.  
**Best for Lamb**  
QS123



**Argentinian Fire**  
A deep rustic colour with Argentinian Spices.  
**Best for Ribs**  
QS118N



**Sicilian Lemon & Garlic**  
A Mediterranean marinade with garlic and herbs.  
**Best for Chicken & Fish**  
QS515

# IRELAND'S BEST BURGER MIX

## **FX400**

Burger MIX  
(Box 450g x 24)

A highly sought-after product by experienced butchers, our Burger Mix creates a mouth-watering burger especially when paired with beef or game. This is a pink-tinted coloured mix that has tasty notes of savoury, spice, nutmeg and cayenne.

GF Burger Mix Available : FX700 Stroganoff Burger Mix



# THE SUPREME BURGER

## QM203

Burger Supreme  
(Box 460g x 24)

The burger has been a success story in recent years and is probably one of the most popular products made from minced meat. Ready-made minced meat patties and buns also make for some delicious burger creations for Master Butchers.

Burger patties should not be missing from your offer. And we deliver the right seasoning for your popular minced meat products! Order a minced meat seasoning for your specific needs now!



# BURGER MIXES



**STROGANOFF BURGER MIX**  
FX700



Our Stroganoff Burger Mix is a necessity to create the perfect flavour-packed, juicy, rich burger. The mix has been packed with herbs, onion, peppers and spices such as paprika and garlic to add to its incredible flavour.  
(Box 450g x 24)



**GF BURGER MIX**  
FX300



A meaty savoury flavour Burger Mix with rounded onion notes.  
Light brown coloured powder.  
(Box 450g x 24)



**BURGER SUPREME**  
QM203

The burger has been a success story in recent years and is probably one of the most popular products made from minced meat. Ready-made minced meat patties and buns also make for some delicious burger creations.  
(Box 460g x 24)



**BURGER MIX**  
FX400

A highly sought-after product by experienced butchers, our Burger Mix creates a mouth-watering burger especially when paired with beef or game. This is a pink-tinted coloured mix that has tasty notes of savoury, spice, nutmeg and cayenne.  
(Box 450g x 24)



**PREMIUM PORK POULTRY**  
**BURGER MIX** FG210

A tasty versatile and easy to use Burger and Grillstick complete mix combining subtle notes of herb and onion with added cracked black pepper.  
(10kg)  
Available in 2.5kg **FG118**

# CHICKEN BREADING COATING



McDonnell's Chicken Breading System is our leading selling chicken breading. Off white powder with visual black pepper and chilli flakes. Savoury, spicy with a lemon pepper note. Butter Mix also available

FW54810 - 10kg tube  
FW548 - 2kg

FW501 - 10KG



FW548 - 2KG



- Available in 10 kg tubs
- No hydrogenated vegetable fat
- No artificial colourings or flavourings

# BEST GLAZES



**Garden Mint Glaze**  
FG116(2.5kg)



**Chinese Glaze**  
FG106(2.5kg) FG206(10kg)



**Peppersteak Glaze**  
FG107(2.5kg) FG207(10kg)



**Double Smoke Glaze**  
FG125(2.5kg) FG225(10kg)



**Hot & Spicy Glaze**  
FG105(2.5kg) FG205(10kg)



**Italian Glaze**  
FG114(2.5kg) FG215(10kg)



**Garlic Butter Glaze**  
FG115(2.5kg)



**Smokey B.B.Q Glaze**  
FG100(2.5kg) FG200(10kg)



**Sticky Maple Glaze**  
FG121(2.5kg) FG221(10kg)

# BEST GLAZES



**Buffalo Glaze**  
FG133(2.5kg)



**Piri Piri Glaze**  
FG109(2.5kg)    FG209(10kg)



**Maple and Chilli Glaze**  
FG129(2.5kg)



**Cajun Glaze**  
FG211(2.5kg)    FG207(10kg)



**Premium Pork & Poultry Burger Mix**  
FG118(2.5kg)    FG210(10kg)



**Kofta Kebab Mix**  
FG119(2.5kg)



**Grillstick Mix**  
FG117(2.5kg)



**Salt and Chilli Glaze**  
FG131(2.5kg)



**Lemon and Pepper Glaze**  
FG108(2.5kg)



**Sweet Chilli & Lime Glaze**  
FG103(2.5kg)



# CHILLI & CORIANDER SPICE BAG MIX



## Chilli & Coriander Spice Bag Mix

FG226(10 kg)

Chilli and Coriander SPICE BAG Mix - a tasty, versatile and easy to use spicy coater.  
A complete crumb with a real good Chilli kick, ideal for use on poultry and fish.

- Available in 10 kg tubs
- No hydrogenated vegetable fat
- No artificial colourings or flavourings

# SEASONINGS & SPICES & HERBS

## QM202 LAMB BURGER SPICE

510g per pack. Box = 20 packs  
With a hint of mint mix, is ideal for a lean lamb burger. Use mint glaze to enhance flavour.

## QM200 CONTINENTAL SPICE

A fine blend of spices and herbs, which is used as a carrier of flavours when used in conjunction with Raffine Oil and other Indasia spices. 1 KG BAG

## QM230 KOFTA MIX SPICE

Ingredient used to make mince kebabs, bind the meat to the kebab stick. Works best with beef and lamb. Kebab can be decorated using Indasia decorating mixes  
2KG BAG

## QM209 CANADIAN STIR FRY SPICE

A fine blend of spices and herbs, which is used as a carrier of flavours when used in conjunction with Raffine Oil and other Indasia spices. 1 KG BAG

## QM215 SPECIAL BBQ SPICE

BBQ seasoning salt with a taste of paprika, coriander, chilli, onion, nutmeg and fennel  
1KG BAG

## FM200 METEX

Metex Cure for Corned Beef & Ribs (160g Packet x 12)  
Recommended Usage: 1. Metex solution: contents of the pack (160g) added to 1.3kg water. Stir well. 2. Salt pickle: 2kg salt added to 18kg water. Add Metex solutions (as (1) above) to Salt pickle (as (2) above).

## HERBS

- FA4984 DRY CURE 5KG
- FA6016 MIXED HERBS
- FA6007 KIBBLED ONION 1KG
- FA6027 THYME
- FA6041 PARSLEY
- FA6060 SAGE 1KG
- FB005 RUSK 8KG
- FB007 PORK CHOP SEASONING 5KG
- FX402 SAGE AND ONION STUFFING 20KG



FDF925  
Mix of dried flowers



FDR522  
Freeze dried raspberries



# BEST TRUFFLE CAKE PRESS

**S027P**

**Truffle / Cake press**

3" White with centre hole.

Create an unique butcher counter!  
This truffle press which cleverly indents your  
burgers to allow you to fill them with  
delicious mouth-watering flavours and  
ingredients such as cheese.





# Burger Presses



- S027**  
Round Shape  
5" Large 130g / Ø 120mm
- S027**  
Round Shape  
4" Medium 100g / Ø 100mm
- S027M**  
Round Shape  
2.5" Small 60g / Ø 60mm
- Other shapes available

**S027**  
Heart Shape  
100g / Ø 100mm



**S027M**  
Heart Shape  
Small / Mini

**S027**  
Flower Shape  
100g



**S027M**  
Flower Shape  
Small / Mini

**S027**  
Triangle Shape  
100g



**S027**  
Square Shape  
100g / 100 x 100mm



**S027M**  
Square Shape  
Small / Mini 50 x 50mm

**S027**  
Steakette Shape  
120g



**S027**  
Teddy Bear Shape  
120g



**S027P**  
Meat Truffle  
135g



**S027**  
Mini Mouse Shape



# Burger Discs



**S004N**  
Wax Burger Discs  
100mm / 4"  
Quantity: 3,000  
Colour: white



**S145**  
Pink Round Burger Discs  
100mm / 4"  
Quantity: 3,000  
Colour: pink

**S146**  
Pink Round Burger Discs  
120mm / 5"  
Quantity: 2,000  
Colour: pink

**S151**  
Pink Round Burger Discs  
150mm / 6"  
Colour: pink

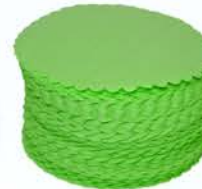


**S156**  
Round Burger Discs  
100mm / 4"  
Colour: black

**S156H**  
Burger Disc round with hole  
100mm / 4"  
Colour: black



**S058**  
Round Burger Discs (500g)  
120mm / 5"  
Colours: black



**S062**  
Round Deckled  
Burger Discs (500g)  
120 x 120mm  
Colours: green



# Wrapping Solutions



McDonnells pink wrapping sheets are ideal for wrapping or interleaving fresh meat, salami, hams, cheese, dairy products, fish, pasta and a whole lot more.

The pink sheets can be cut to different sizes. They are available in four standard sizes to suit various uses.

**S147**  
1/8 245mm x 350mm  
1,850 sheets per box.  
Ideal for wrapping meats and ham sliced for daily selling direct to the customer. They preserve the sliced product and prolong freshness

**S148**  
1/4 350mm x 500mm  
1,850 sheets per box.  
Ideal for wrapping roasts, rabbits, liver, heart and other types of meat with special requirements. Also suitable for wrapping pieces of meat in cold storage

**S149**  
1/2 500mm x 700mm  
2,150 sheets per box.  
Ideal for wrapping and interleaving chicken, rabbits and other large pieces of meat

**S150**  
1/1 700mm x 1000mm  
1,075 sheets per box.  
Ideal for wrapping larger pieces of meat or lining boxes



- Prolongs freshness & colour Preserves
- Ideal for lining boxes
- Easy wrapping of meat Gift/Presentation of
- special cuts of meat

# SQUEEGEES AND HANDLES

MADE IN DENMARK



## S28600

One-Piece 600mm Super Hygienic  
Squeegee available in a  
range of colours



HACCP COLOURS  
CHECK AVAILABILITY



## S28603

600mm Squeegee  
with Black Rubber insert



## S29904

One Piece, Super Hygienic  
Handle measuring 1,500 x 32mm



## S29804

Standard Aluminium Handle  
measuring 1,500 x 25mm

# BEST HYGIENE EQUIPMENT

MADE IN DENMARK



S80102 / S80101  
Bucket, Polypropylene  
Available in many colours.  
9 litre / 15 Litre  
Lids available



S10252  
Brush Polyester (medium)  
Available in many colours.  
340x35x50mm



S80301  
Dust Pan, Polypropylene  
Available in many colours.  
300x310mm



S10548  
Churn Brush Polyester (Flagged)  
Available in many colours.  
225x45x25mm



S28600  
Super Hygienic Squeegee  
Available in many colours.  
600mm



XD02090  
Kentucky Mop  
400g



X188390  
Step on Pedal Bin (90l)  
Available in many colours.  
810(H) x 630(W) x 400 (D) mm



S29904  
One piece Super Hygienic Handle  
1500x32mm



D9001200  
Block Brush with Handle



# BRUSHES BROOMS SWEEPERS



MADE IN DENMARK



S21136  
Sweeper Polyester (medium)  
400 x 50 x 55mm



S23155  
Broom Polyester (medium)  
300 x 60 x 55mm



S26155  
Broom Polyester (medium)  
500 x 60 x 55mm

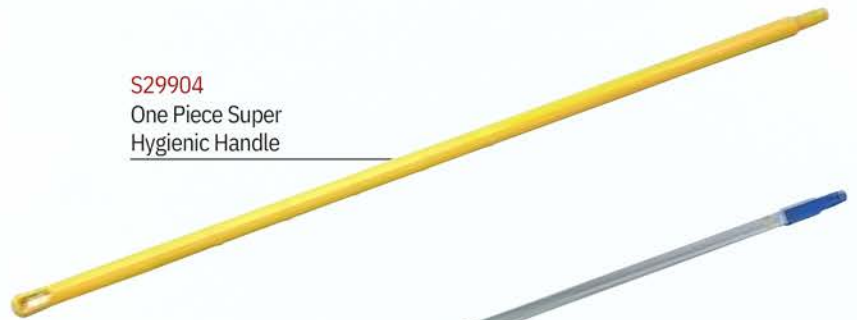


S21153  
Deck Scrub Polyester (stiff) 400 x 40 x 30mm



S27187  
Broom Polyester (very stiff)  
600 x 60 x 65mm

S29904  
One Piece Super  
Hygienic Handle



S29804  
Standard Aluminium Handle  
1,500 x 25mm



S28603  
600mm Squeegee  
With Black Rubber insert



# HAND BRUSHES AND HYGIENE TOOLS

MADE IN DENMARK



S10215  
Long Utility Brush Polyester (stiff)  
410 x 45 x 40mm



S10467  
Dish Wash Brush Polyester (flagged)  
225 x 45 x 25mm



S10548  
Churn Brush Polyester (stiff)  
275 x 70 x 35mm



S10252  
Brush Polyester (medium)  
340 x 35 x 50mm



S80301  
Dust Pan, Polypropylene  
300 x 310mm



S54154  
Round Hand Scrub  
Brush Polyester (stiff)  
Ø 120 x 40mm



S81900  
Ergo Scraper  
Polypropylene 3-sides  
200 x 125mm



S15060  
Nail Brush Polyester  
(medium)  
110 x 45 x 16mm



HACCP COLOURS  
CHECK AVAILABILITY



S82125  
Glazing Brush, Polyester (soft)  
70mm



# HYGIENE TOOLS

MADE IN DENMARK



**S15105**  
Hand Scoop, Polypropylene (500g)  
100 x 260mm



**S15106**  
Hand Scoop, Polypropylene (750g)  
138 x 310mm



**S15107**  
Hand Scoop, Polypropylene (1,000g)  
160 x 360mm



**S15150**  
Hanging Clip (small)  
Ø 22 x 32mm



**S15151**  
Hanging Clip (large)  
Ø 28 x 38mm



**S80000**  
Wall Hook Nylon  
60mm



**XYW80**  
Single Piece Paddle with holes  
1,260mm



**XY61**  
Lobby Pan with Brush  
1,260mm



**S15104**  
Ergonomic One Piece Shovel (Large)  
330 x 380 x 1,330mm

# HYGIENE TOOLS

MADE IN DENMARK



**S10776**  
Tube Brush Head Polyester S/S (medium)  
Tube Brush Head and  
Thread Ø 60 x 100 x 160m



**S10772**  
Tube Brush Head Polyester S/S (medium)  
Tube Brush Head and  
Thread Ø 20 x 100 x  
160mm



**S10774**  
Tube Brush Head Polyester S/S (medium)  
Tube Brush Head and  
Thread Ø 40 x 100 x  
160mm



**S10750**  
Tube/Bottle Brush, Polyester (medium)  
Ø 10 x 150 x 500mm

**S10752**  
Tube/Bottle Brush, Polyester (medium)  
Ø 20 x 150 x 500mm

**S10754**  
Tube/Bottle Brush, Polyester (medium)  
Ø 30 x 150 x 500mm

**S10756**  
Tube/Bottle Brush, Polyester (medium)  
Ø 40 x 150 x 500mm

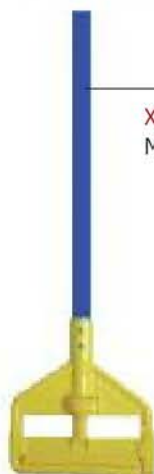


**S10713**  
Tube/Bottle Brush (with Tuft), Polyester (medium)  
Ø 55 x 140 x 450mm

**S10714**  
Tube/Bottle Brush (with Tuft), Polyester (medium)  
Ø 65 x 160 x 500mm



**S10784**  
Flexible Nylon Rod  
Rods with Thread  
1,500mm



**XH146**  
Mop Holder and Handle



**XD02090**  
Floor Mop (400g)



HACCP COLOURS  
CHECK AVAILABILITY



**X1221**  
Mob Bucket Combo  
Colours: red, yellow, blue, green

# STORAGE SOLUTION



**XSK64175**  
Solid Stackable Container  
600 x 400 x 175mm  
Colours: red, white, yellow, blue, green



Container, Lid  
and Trolley  
sold separately



**X2632**  
Brute Container  
121.1 litre  
Food Approved  
Colours: grey, white, yellow

**X2631**  
Brute Container Lid  
Colours: grey, white, yellow

**X2640**  
Brute Container Trolley  
Colours: grey, white, yellow



**X50SDOL**  
Dolly  
400 x 600mm  
Colours: red, blue, yellow



**X60SDOL**  
Dolly  
Colours: red



**XMT1BP**  
Pickle Tank (305lt)  
990 x 686 x 762mm

**XMT21**  
Pickle Tank  
600 x 310 x 528mm Lids available

# STORAGE SOLUTION



**XB600400120**  
Container  
600 x 400 x 120mm



**XB60040080**  
Container  
600 x 400 x 80mm



**XB60040060**  
Container  
600 x 400 x 60mm  
**XB600400L**  
Container Lid



**X3600**  
Ingredient Bin  
(79lt)

# STAINLESS STEEL HOOKS

Made from high grade stainless steel. Available to suit weights typical of the meat industry.

Easy to handle, smooth surfaces and high thickness.

Absolutely hygienic.



**HSSW8**  
8" Swivel Hook (each)  
210 x 9mm 120kg

**HSSW10**  
10" Swivel Hook (each)  
240 x 10mm 140kg

**HSSW12**  
12" Swivel Hook (each)  
300 x 12mm 180kg

**HSS2**  
2" S/S Hook (box of 10)  
60 x 3mm 25kg

**HSS4**  
4" S/S Hook (box of 10)  
80 x 4mm 40kg

**HSS6**  
6" S/S Hook (box of 10)  
160 x 6mm 70kg

**HSS9**  
8" S/S Hook (box of 10)  
200 x 9mm 120kg

**HSS10**  
10" S/S Hook (each)  
250 x 10mm 140kg

**HSS12**  
12" S/S Hook (each)  
300 x 12mm 180kg



**HSSAG**  
A-Type S/S Gambol



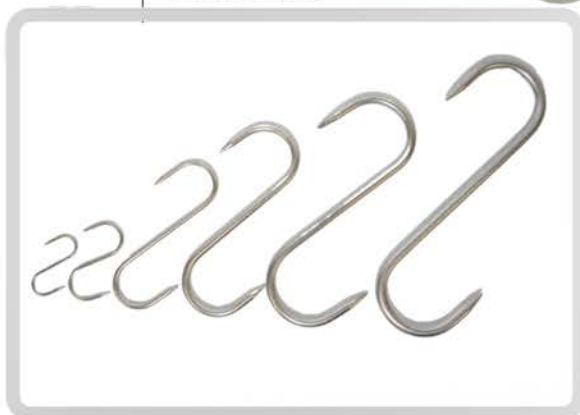
**HSSRS**  
Round Top Swivel  
220mm 300kg



**S034**  
Meat Grab Hook  
Colour: Orange



**HSSDH**  
12" Double Swivel Hook  
320 x 230 x 10mm 140kg



# SPECIAL PREMIUM TWINE

## 5 + 1 Premium Twine



Our Premium Twine is made from first class, high tenacity rayon yarn to produce a thin multi-purpose twine, made from continuous filaments, which gives the twine their considerable strength. Ideal for kitchen use and for meat preparation. The box has 5 white rolls and one coloured.

S0080R - 5 white rolls + 1 RED

S0080C - 5 white rolls + 1 RED & GREEN



S200BK  
Black and White Twine



S0079  
Rayon Premium Twine No 104  
box of 10



S008104  
Rayon No 104 Narrow Twine  
box of 6



S0078  
Rayon Premium Twine No 5  
box of 10



S0075  
Rayon Premium Twine No 5  
box of 6



S0077  
Rayon Premium Twine No 4  
box of 10



S0074  
Rayon Premium Twine No 4  
box of 6



S190  
Coloured Twine Mixed Pack  
box of 10



S20010R  
Red & White Premium Twine  
box of 10



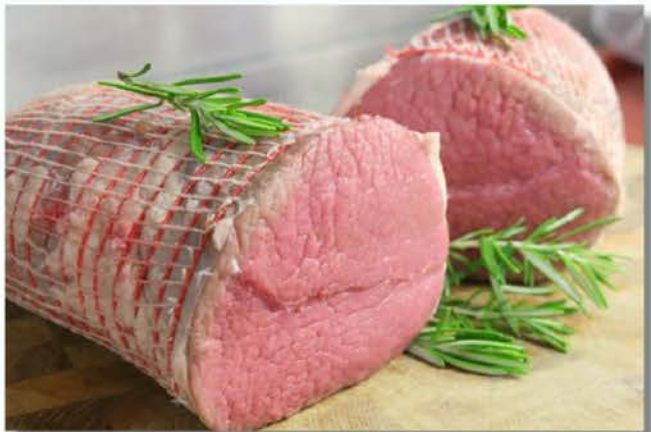
S200R  
Red & White Premium Twine  
box of 6

S195  
Black Butchers Twine  
box of 6





# MICROMESH NETTING AND ELASTIC LOOPS



## Micromesh Netting

Micromesh Netting offers superior performance when constant visual pattern and binding pressure is required. Suitable for roasting and boiling. Can be used for the packaging of smoked meats (Bacon and Ham) and roasts (Pork, Beef, Lamb and Poultry).



**NR100M10.5**  
10.5" Red Micromesh Netting  
100m

**NR100M10.0**  
10" Red Micromesh Netting  
100m

**NR100M 9.0**  
9" Red Micromesh Netting  
100m

**NR100M8.0**  
8" Red Micromesh Netting  
100m

**NR100M7.0**  
7" Red Micromesh Netting  
100m



**NW100M10.0**  
10" White Micromesh Netting  
100m

**NW100M9.0**  
9" White Micromesh Netting  
100m

**NW100M8.0**  
8" White Micromesh Netting  
100m

**NW100M7.0**  
7" White Micromesh Netting  
100m

## Elastic Loops

Ideal for mini roasts and small portion stuffed meat products (chicken olives etc). They can also be used to truss dressed poultry ready for the oven.

**S084**  
White Loop 140mm  
3kg

**S097**  
Red Coloured Loop 80mm  
3kg  
Red

**S096**  
Red Coloured Loop 50mm  
3kg  
Red

Other colours available on request



# TIME SAVER DUAL COOK-IN-BAGS



Cleaner, quicker cooking, every time

- Ready for the oven or microwave.
- Keeps in all those juices and flavours.
- Simple and Clean.
- Keeps the meat really tender.
- Cooks up to 220 degrees

BCV350450 - Size 350x450mm (pack of 100)

BCV300300 - Size 300x300mm (pack of 100)



## PREMIUM MEAT SAVER PAPER



Keeps red meat looking fresh while on display and in the chiller.

### S050

Meat Saver Paper  
250 x 300mm  
Quantity: 1,000  
Colours: peach, black, green

### S051

Meat Saver Paper  
250 x 375mm  
Quantity: 1,000  
Colour: white

### S598

Meat Saver Paper  
250 x 373mm  
Quantity: 1,000  
Colour: black

Keeps red meat looking fresh while on display and in the chiller



4 different colours available



Peach White Green Black



- Saves time and money
  - Reduces waste
  - Meat retains moisture
  - Extends shelf life
  - Strong with a high tear resistance
- Can be cut to any shape or size

# OLD TIME IRISH SAUSAGE MIX



## KAM1639

### Old Time Irish Sausage Mix

Our Old Time Irish Sausage Mix is a very savoury seasoning that gives an instantaneous burst of flavour. With instructions provided below, this seasoning is ready to provide you with a fantastic tasting sausage.

#### Method 1: Using a mincer

1. Mince all meat through a large holed plate, approx 10mm.
2. Add water and sausage mi, mix well until well integrated.
3. Re-mince through smaller holed plate, approx 5mm.
4. Fill into casings and link.

#### Method 2: Using a bowl chopper

1. Mince all meat through a large holed plate, approx 10mm.
2. Place all meat in bowl chopper and add sausage mix.
3. Chop on slow speed, adding water slowly until absorbed.
4. Chop on high speed, for two and a half mins or until desired texture is attained.
5. Fill into casings and link.

# EDIBLE COLLAGEN CASINGS

- Clear appearance with high sheen and customer appeal .
- Consistent tender bite .
- Good machinability for high productivity on all filling systems .
- Yield and shape consistency, leads to controlled output .
- Hygienic and traceable .
- Very good cooking performance .
- Easy handlinking



## Devro Machine Link

**E210880**  
21mm Machine Casing  
850m

**E230880**  
23mm Machine Casing  
576m

**E260880**  
26mm Machine Casing  
672m

**E280880**  
28mm Machine Casing  
595m



## Devro Handlink Clear & Shine

**E210150**  
21mm Handlink Casing  
625m

**E230150**  
23mm Handlink Casing  
450m

**E260150**  
26mm Handlink Casing  
400m

**E280150**  
28mm Hanklink Casing  
350m

# BEST SAUSAGE MIXES



**Old Time Irish Sausage Mix**

**KAM 1639**

1.16 KG / Box of 12



**Complete Pork Sausage Mix**

**FX507**

450g per pack / Box of 15



**White Sausage Blend**

**QA101**

818g per pack / Box of 18

**Method 1: Using a mincer**

1. Mince all meat through a large holed plate, approx 10mm.
2. Add water and sausage mi, mix well until well integrated.
3. Re-mince through smaller holed plate, approx 5mm.
4. Fill into casings and link.

**Method 2: Using a bowl chopper**

1. Mince all meat through a large holed plate, approx 10mm.
2. Place all meat in bowl chopper and add sausage mix.
3. Chop on slow speed, adding water slowly until absorbed.
4. Chop on high speed, for two and a half mins or until desired texture is attained.
5. Fill into casings and link.

# SUNDRIES



**S002**  
4 1/2 Lamb Skewers  
Quantity: 1,000



**S206**  
Grillsticks  
250mm Ø 3mm  
Quantity: 1,000



**S210**  
Teppo Gushi Skewers  
120mm

**S209**  
Teppo Gushi Skewers  
180mm

**S208**  
Teppo Gushi Skewers  
90mm



**S016**  
Metal Tape Machine  
**S014**  
Red Tape 9mm  
**S01432**  
Premium Red Tape 9mm (32pack)  
**S017**  
Red Tape 12mm

**S206**  
Grillsticks  
200mm Ø 3mm  
Quantity: 1,000



**GTH20**  
Probe Wipes



**S033**  
Liver Hook



**S021**  
Saw Tension Lever  
**S022**  
Saw Handle



**CB8043**  
Black Easydry Towel  
800 x 430mm  
Quantity: 50

**CW8043**  
White Easydry Towel  
800 x 430mm  
Quantity: 50

# SUNDRIES



D9510117  
6" Carving Fork



GDR32  
Red and Green 30"  
Garnish with black base  
(sold individually)



GG35  
Deluxe Parsley Garnish  
10" black base  
(sold in boxes for 6)



S019  
Plastic Meat Scraper



SP180  
Pop up Timer for Meat  
Quantity: 500



RPU975  
Poultry Shears Rust Free  
Other colours available



S053  
Duracool Stainless Steel  
Tongs 240mm  
Available in yellow,  
red, green and blue



S086  
Portion Professional  
Many sizes available



D9001600  
Meat Tenderiser

S053L  
Duracool Stainless Steel  
Tongs 300mm  
Available in yellow,  
red, green and blue



S047  
Aluminium Mince Scoop



S055  
Stainless Steel Spoons  
Slotted & Solid



S034  
Meat Grab Hook  
Orange



D9105923  
Mincing Knife



D9000319  
Brineometer



GT106  
Large 310 mm  
Colours: black, white  
GT104  
Large 250mm  
Colours: black, white



# COUNTER DISPLAY TICKETING



**GK10020 / GK10050**  
Ticket Clamp 20/50mm



**GK1000**  
Ticket Stand Melamine



**S305**  
Tray Clip Plastic (10)



**S318 B/W**  
Basket Clips



**S129**  
S/S Clip Ticket Holder



**SK301** Ticket Holding Stand (56mm)  
**SK302** Ticket Holding Stand (85mm)



**S122**  
S/S Clip Ticket Holder (10)



**S121**  
Bamboo Ticket Holder (10)



**S111**  
Twin Spike Ticket Holder (10)



**S112**  
MBI White Ticket with Spike (25)



**SK134**  
Ice Spike Ticket Holder



**S301** Ticket Holder Stand (50mm)  
**S302** Ticket Holder Stand (75mm)  
**S303** Ticket Holder Stand (140 mm)



**GKB66**  
Nylon Ticket Pin 65mm (25)



**S137**  
S/S Single Pin Ticket Holder (10)



**GKB69**  
Ticket Holder Stand 95mm (25)



**S138**  
Designer Ticket Stand Black or White

# COUNTER DISPLAY TICKETING



**S304**  
Twin Spike Ticket Holder (10)



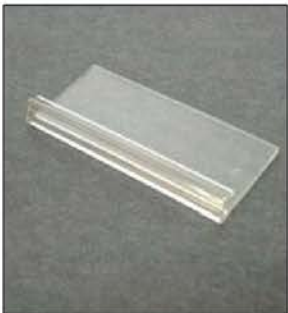
**S113**  
Swivel Ticket Holder (10)



**S116**  
Swivel Ticket Holder



**GK37**  
S/S Ticket Pin



**S309**  
PT50 Small Ticket Stand



**S360**  
S/S Ticket Stands (80mm)



**S362**  
Metal Ticket Stand (Silver/Black)



**SK119**  
Spring Clamp Ticket Holder



**ST25380**  
Ticket Clip  
(1pack =10)

**ST18824**  
Spike Ticket  
Card Holder  
(1pack =10)

**GKB1600**  
A6 Standing Blackboard  
148 x 105mm

**GKB1500**  
A5 Standing Blackboard  
210 x 148mm

**GKB1400**  
A4 Standing Blackboard  
297 x 210mm



**SK1500**  
Standing Blackboards with Oak Rim  
(pack of three) 160 x 230mm



**S132**  
Coloured Chalk Markers  
(individual)

# PLASTIC SHELVING AND PALLETS

- Modular
- Temperatures + 80°C to - 40°C  
HACCP/ISO approved
- Easy Clean
- Fits into corners
- 200kg per metre capacity



### Shelving Units

Standard lengths

100 cm  
120 cm  
150 cm  
180 cm  
200 cm

Standard widths

40cm  
50cm  
60cm

Standard Shelf height

35cm

### Trolleys on wheels with containers

#### XRE4

Trolley on wheels  
Comes with 4 Containers

#### XRE6

Trolley on wheels  
Comes with 6 Containers

Other sizes available



### Corner Shelving units

Contact us for available sizes



### Floor Pallets

Standard lengths

100 cm  
120 cm  
150 cm  
180 cm  
200cm

Standard widths

40cm  
50cm  
60cm

- Free quotations for cold room measuring
- Free cold room shelving fitting design

# FILLERS, SEALERS AND FLY KILLERS



**MHSS**  
S/S Heat Sealer

**S060**  
Heat Sealer Wires  
(1pack =5)



**MHWS**  
White Heat  
Sealer

**BFL450**  
Cling Film (1,500m)  
450mm



**MHB**  
Single Bar Heat Sealer



**D9050900**  
9lt Sausage Filler

**D9051200**  
12lt Sausage Filler

**D9051500**  
15lt Sausage Filler



**MBUR5**  
5" Burger Press



**MPATTYO**  
Patty-o-Matic Easy Slider



**MDCGX22**  
Date Code Genie Food  
Labelling Machine

Learn how to save time and improve your labelling

## MASTER BUTCHERS BLOCKS

We are now supplying the best value for money butcher blocks.

Each butcher block can be used with an existing butcher block stand or bought with a brand new butcher block stand made from aluminium (for lightness and strength).

The butcher block is hard wearing and made to last, but as per all butcher blocks must be looked after. The butcher block must be cleaned down at the end of the day using butcher block cleaning methods.

**All sizes available**



# CUTTING BOARDS AND STANDS

**IWCB220S**

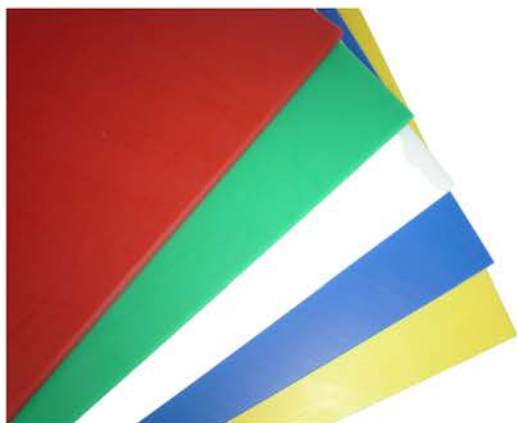
Beech Square  
220 x 220 x 120mm

**IWCB220M**

Beech Square  
220 x 220 x 150mm

**IWCB220L**

Beech Display Block  
220 x 220 x 180mm



**ICB12**

Hygienic Cutting Board  
12' x 18' x 12mm  
HCAPP colour coded  
Can be made to measure

**ICB24**

Hygienic Cutting Board  
18' x 24' x 12mm  
HCAPP colour coded  
Can be made to measure



**ICBR1N**

Plastic Cutting Board Holder



**IM30013**

Maple Round Cutting Block  
Ø370 x 50mm

**IM30006**

Maple Round Cutting Block  
Ø 460 x 90mm

**IWCB220S**

Beech Square  
220 x 220 x 120mm

**IWCB220M**

Beech Square  
220 x 220 x 150mm



**IKR**

S/S Knife Holder for Block



**IWBR330W**

Walnut Round Mini Cutting Block  
Ø 330 x 330mm  
different sizes available

Master  
Butchers



*McDonnell's*  
suppliers to the food trade



Master  
Butchers

# Butchers Tools

