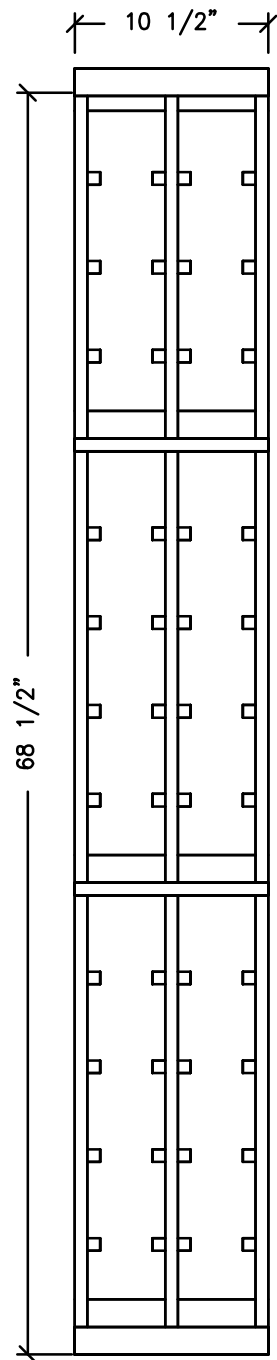
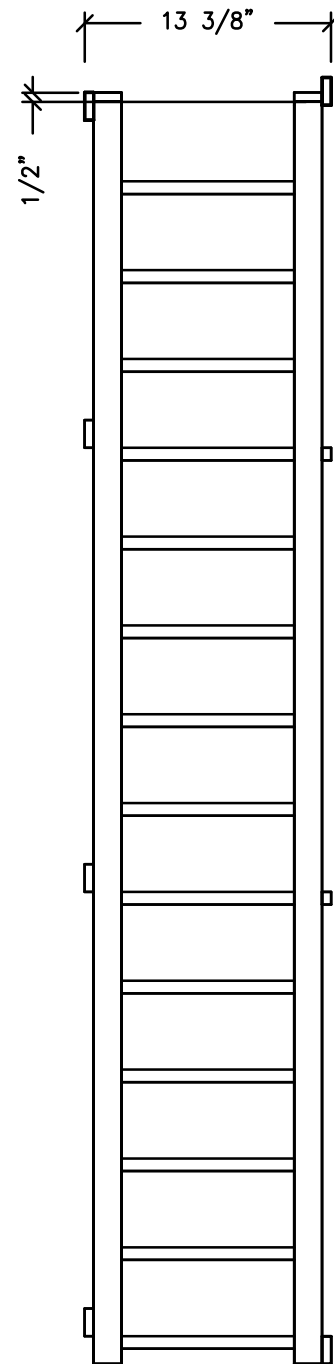


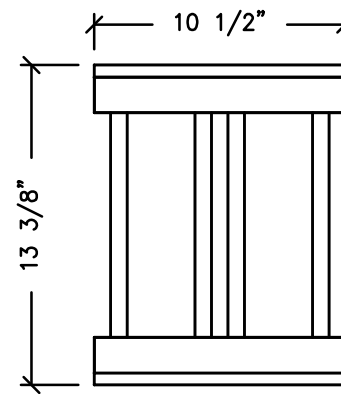
ASSEMBLY INSTRUCTION



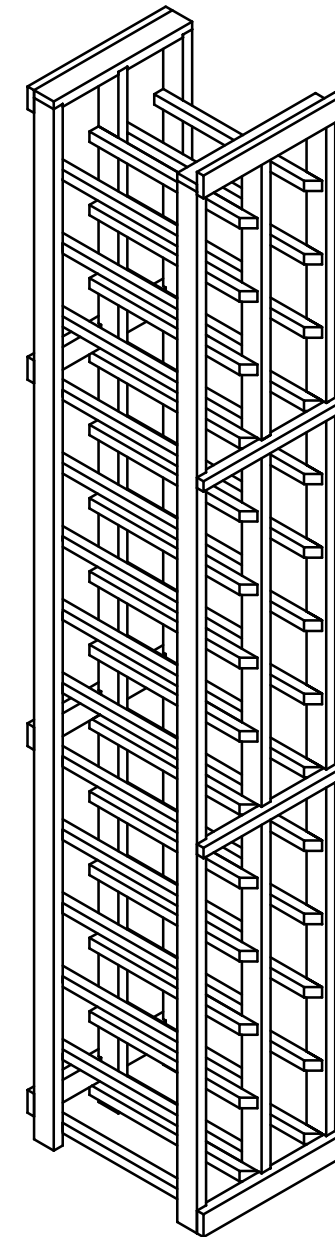
MAG/CHAMP
Front view



MAG/CHAMP
Side view



MAG/CHAMP
Top view



ISOMETRIC

P-1

REVISION	KIT NAME: Individual Mag/Champ 6.1	
0	No. MAG/CHAMP	NOTES: 1.- 11/16" THICKNESS 2.- PRODUCTION TOLERANCE 0-1/16" 3.- ALL DIMENSION HAVE TO VERIFY ON FIELD
	DATE: APR/25/18	
	DRAW: DANIEL D.	



REVISIONS		
REV.	DATE	DESCRIPTION

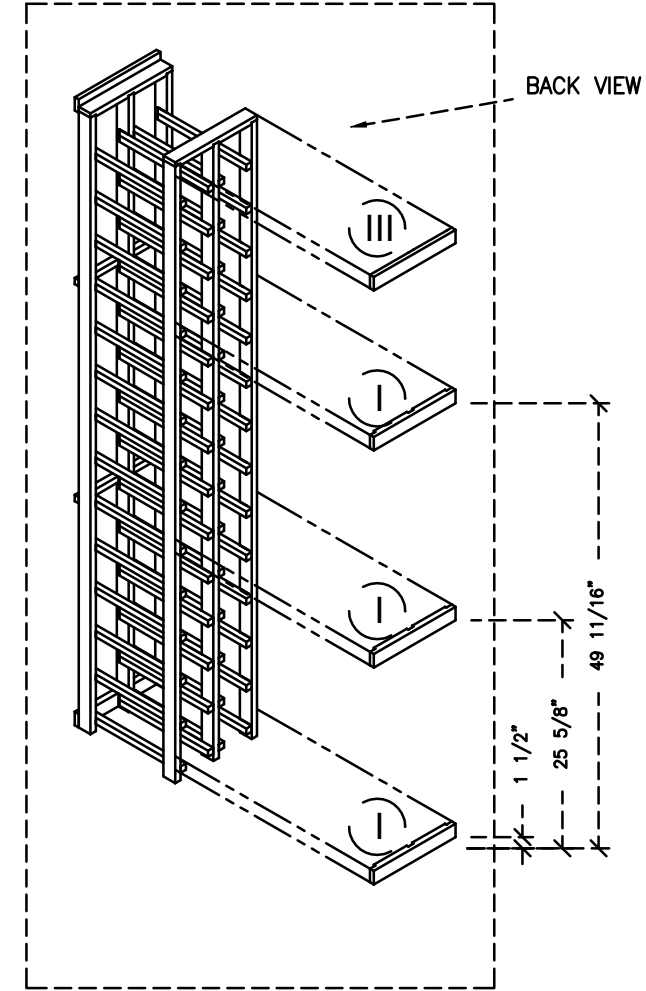
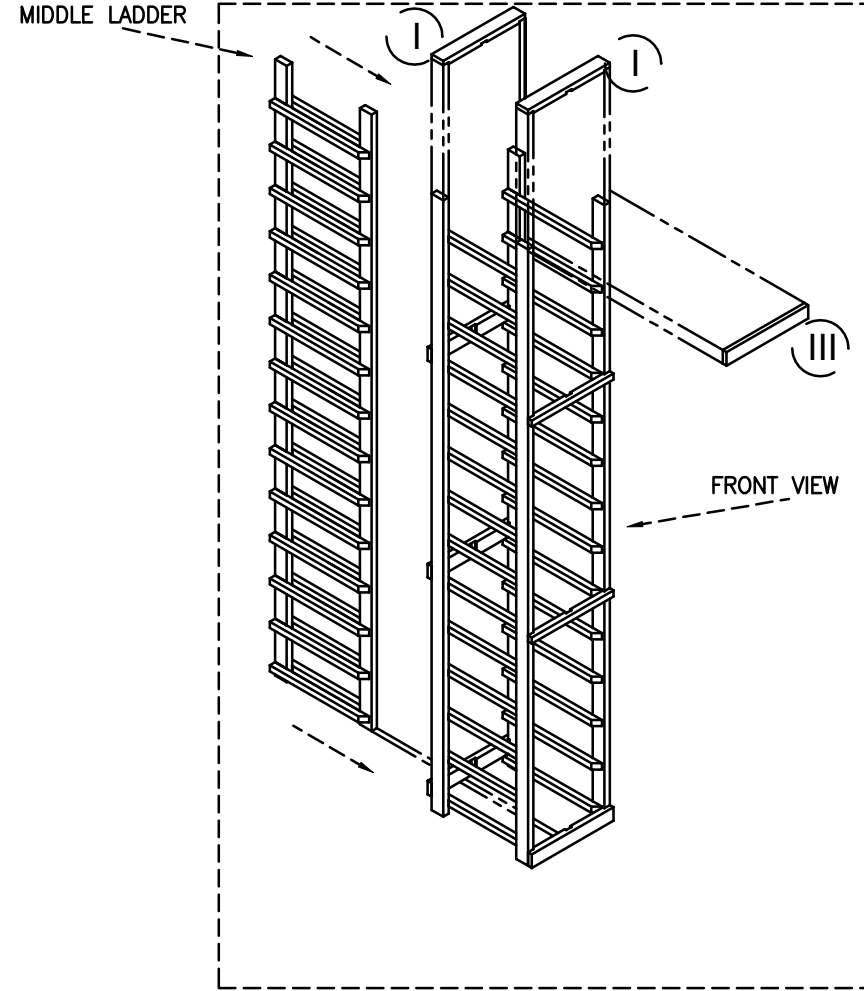
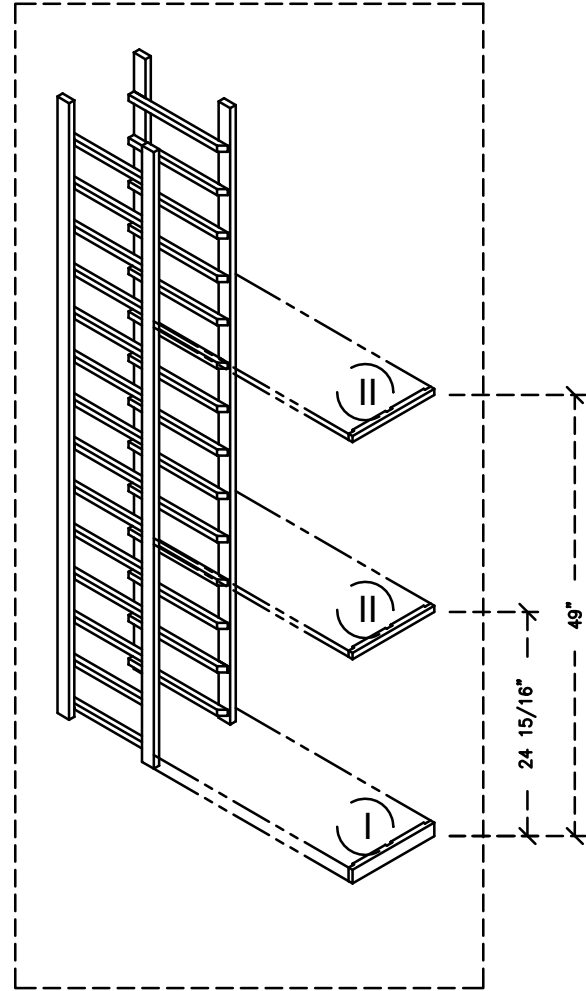
APPROVED BY:

DATE:

*Proprietary Trademark Infringement- Designs are proprietary and cannot be copied or shared with others without our written consent.

ASSEMBLY INSTRUCTION

LEFT & RIGHT LADDERS



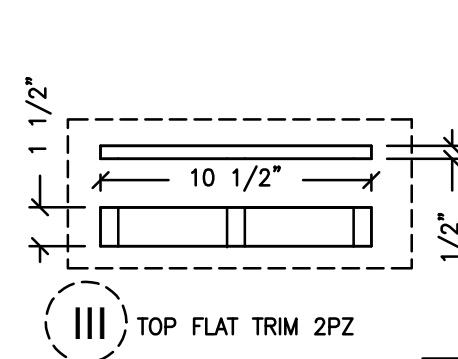
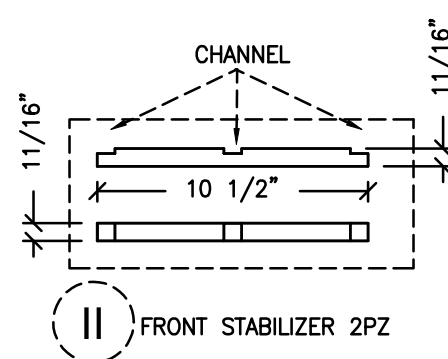
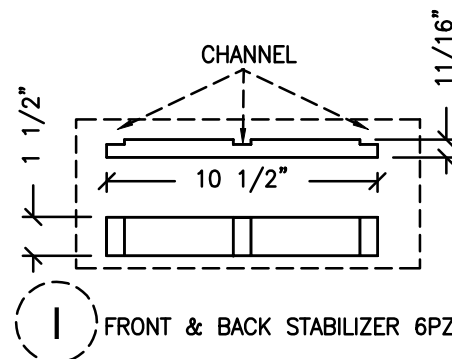
Step 1 – Stand the left and right ladder, making sure the holders with the cut angles are facing you. Then place the front stabilizers at the indicated dimensions. Nail each ladder onto stabilizers.

Step 2 – Insert the middle ladder into the slots of the stabilizer. Once the middle ladder is inserted, place the top stabilizers and top flat trim. Nail each middle ladder onto stabilizers.

Step 3.– Attach the back stabilizers at the indicated dimensions. Nail each ladder onto stabilizers.

Note: All dimensions are from floor to bottom of stabilizers.

Note: The last stabilizers are flat trims. You may attach at the height you need.



P-1

REVISION	KIT NAME: Individual Mag/Champ 6.1	
0	No. MAG/CHAMP	NOTES:
	DATE: APR/25/18	1.- 11/16" THICKNESS
	DRAW: DANIEL D.	2.- PRODUCTION TOLERANCE 0-1/16"
		3.- ALL DIMENSION HAVE TO VERIFY ON FIELD



REVISIONS		
REV.	DATE	DESCRIPTION

APPROVED BY:

DATE: