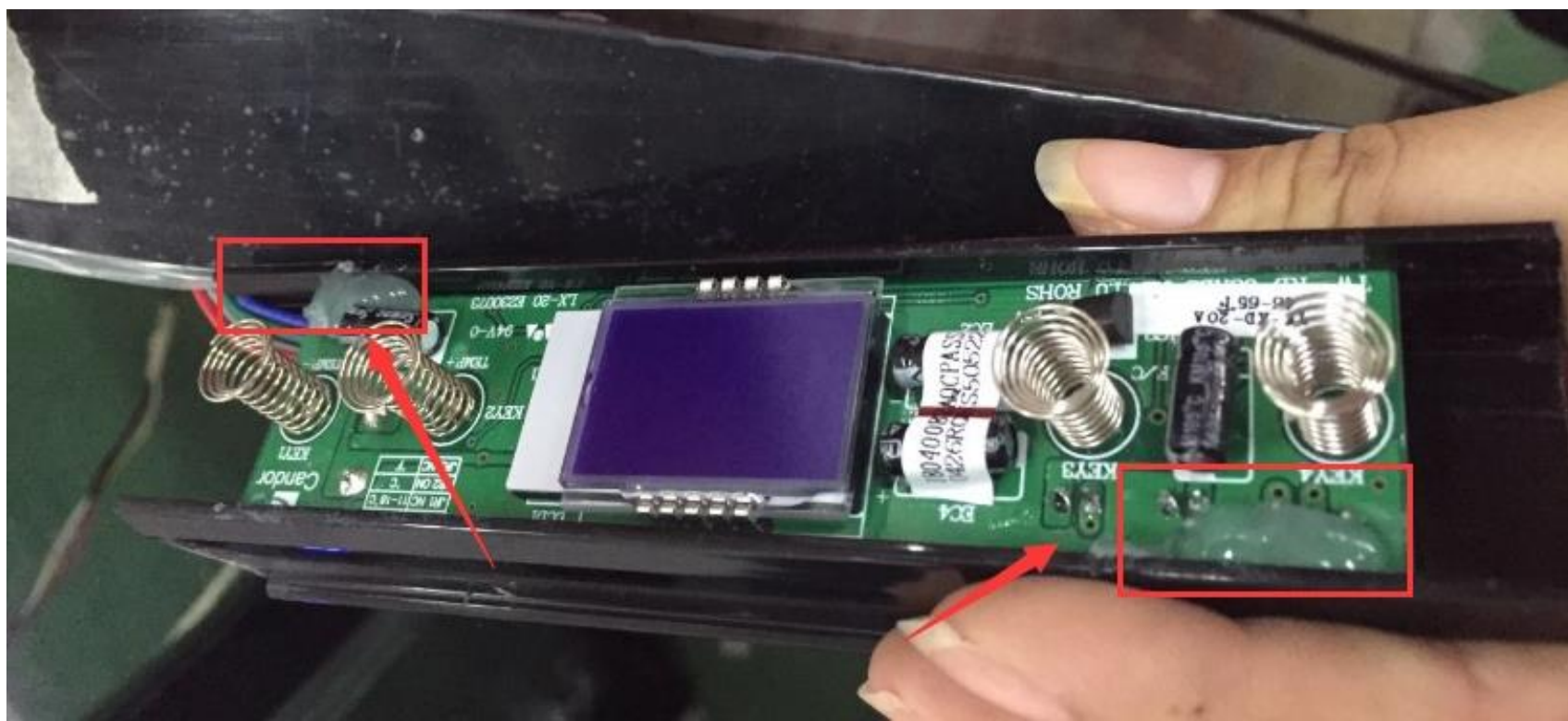


EL-155BSH Repair Instructions for Control Board

There are two plastic points are just to set the display board, you can break them, pull the display out, and then put the new display board replacing the old one in the controller box, however you should use glue to cover these two points to fix the display board.

If it is hard to break (snap off) these two plastic pieces, you can use alcohol or a hair dryer to make them soft, so that you can move them easily.



Follow the steps

