

kitchen & bath DESIGN NEWS[®]

The leading business, design and product resource for the kitchen & bath trade

SPRING BATH REMODELING REPORT • 40

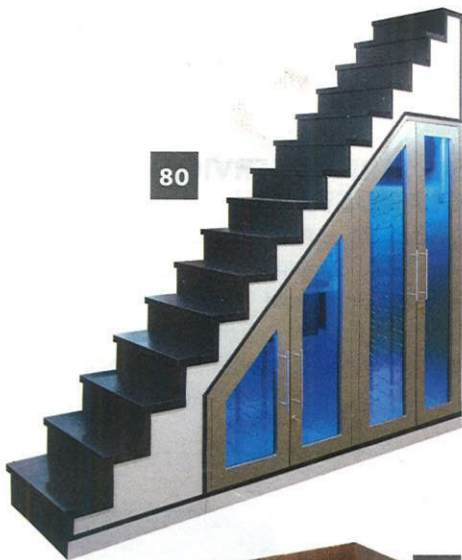
MASTER BATHS, CUSTOM LOOKS

COUNTERTOP TRENDS • 46

Hot Trends
In Surfacing

KBIS 2016 • 64

Post-show
Product Roundup



80



81

80. The **Vinotemp** Brushed Stainless Modular Under Stairs Wine Cabinet is a modern wine storage solution that can be specified under new and existing standard staircases. It is modular, so its depth and length can be customized to best accommodate varying wine collection and staircase sizes.
Circle No. 329 on Product Card

81. The Pioneer Cabinet Bracket is designed to support countertop overhangs when false drawer fronts and cabinet doors do not allow for any routing using typical hidden plate supports. The bracket, from **Federal Brace**, fits across the top of the base cabinet with arms that extend out to support the overhang.
Circle No. 330 on Product Card



82

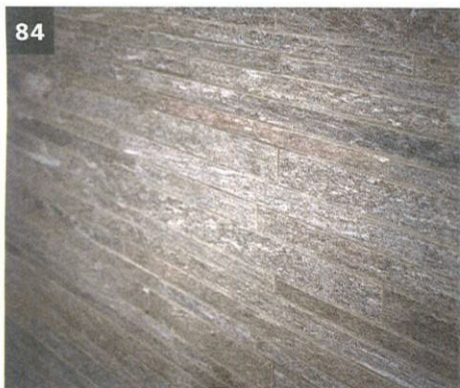


83

82. **Premier Copper Products** has introduced three new products, including the Correa Range Hood. The hood complements the company's Barrel Strap Apron Kitchen Sink.
Circle No. 331 on Product Card

83. **Blanco's** Artona kitchen faucet features a semi-hidden, pull-down dual spray head and a standard 2.2 or 1.5 GPM flow rate, offering water-saving potential. Showcasing an organic shape and soft, rounded curves and edges, Artona is available in six colors along with stainless and chrome finishes.
Circle No. 332 on Product Card

84. Inspired by the fine-grained quartzite found in the Swiss Alps, the Ambassador Series ColorBody porcelain tile from **Daltile** features distinctive mono-directional graining. Large format sizes are available in four shades: Wanderlust White, Jet-Setter Dusk, Global Grey and Voyager Black.
Circle No. 333 on Product Card



84



85

85. **LG Signature's** built-in side-by-side refrigerator, with 25.6 cu. ft. of space, includes the SmartSpace System ice dispenser, which allows users to still have usable door bins and an obstruction-free top shelf. The refrigerator's Linear Compressor and Dual Evaporators react quickly to humidity and temperature levels to maintain foods' freshness, the company notes.
Circle No. 334 on Product Card

86. **Vicostone's** collection of surfaces has just been updated with new marble-look colors. The newest addition, Venatino, is a combination of the company's existing bold Borghini and elegant Statuario. Manufactured using Italy's Breton technology, the new colors possess the essential characteristics that belong to quartz engineered stone.
Circle No. 335 on Product Card



86



87

87. Fun and functional, Tilt is an eclectic collection of stoneware mosaic patterns in a variety of shapes and textures from **Walker Zanger**. The design draws inspiration from sources as varied as Hollywood Regency, Pop Art, Gothic Carving, Flower Power and 1970s Sci Fi.
Circle No. 336 on Product Card

88. The first residential built-in modular 24" Frost-Free Freezer is now available from **U-Line**. Part of the company's ultra-premium Modular 3000 Series, the 3024FZR features U-Select Control, which allows the user to set the pre-programmed Polar mode, or manually adjust the temperature from -5°F to 5°F. The unit is available in stainless and integrated finishes.
Circle No. 337 on Product Card



88



89

89. The retro 1950s freestanding dishwasher from **Smeg** features an elegant and timeless design. The unit holds 13 place settings, and provides optimum results with a minimum use of energy, water and detergent, according to the company. The retro dishwasher is available in red, pastel blue, pink, cream, orange, lime green, black and silver.
Circle No. 338 on Product Card

90. (Not Shown) Available this spring, **Franke's** Chef Center is designed to enhance entertaining, simplify cleanup and maximize creativity, according to the company. The Chef Center features two anti-microbial compartments for collecting compost scraps, chilling wine or storing kitchen tools. Custom accessories are also available, including Franke's Roller Mat.
Circle No. 339 on Product Card