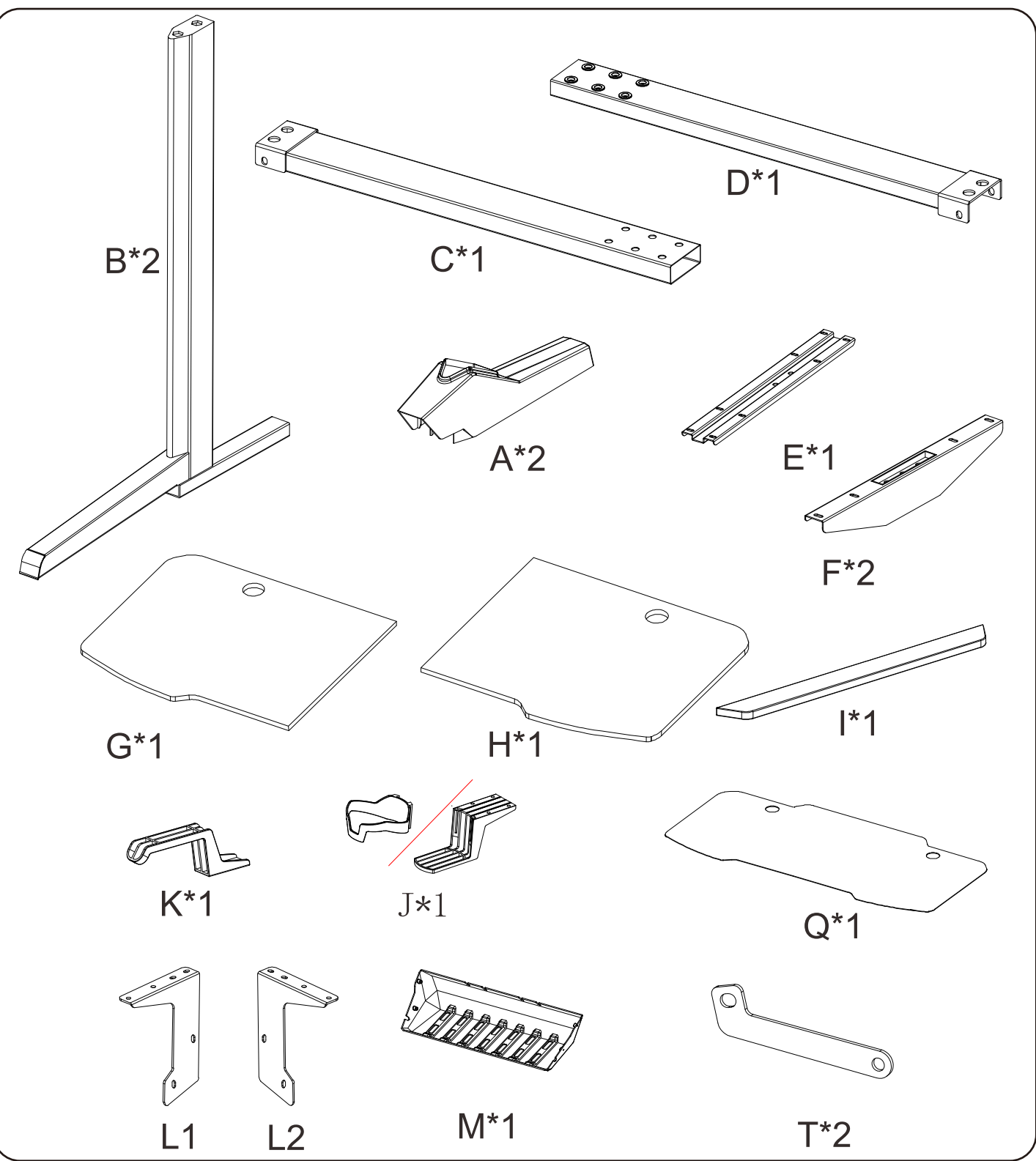
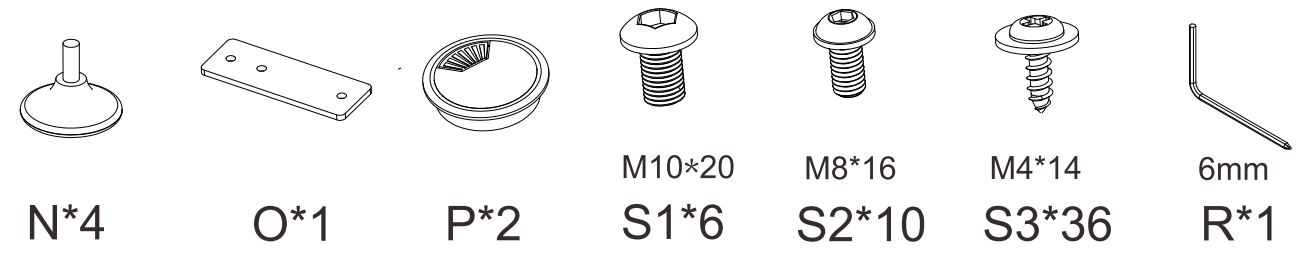


PARTS LIST

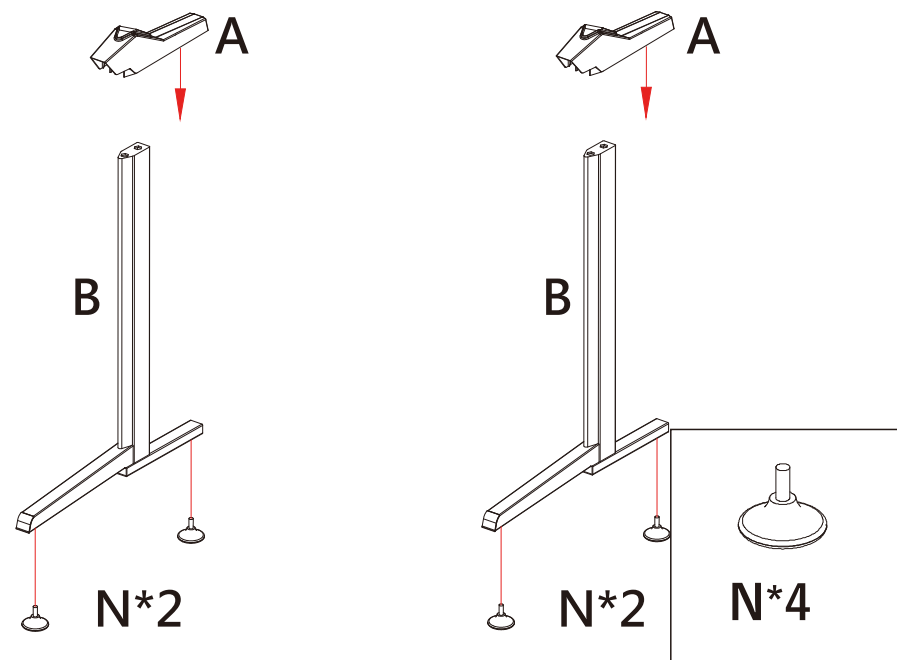


DRIFT
DZ2000
EXPERT GAMING DESK

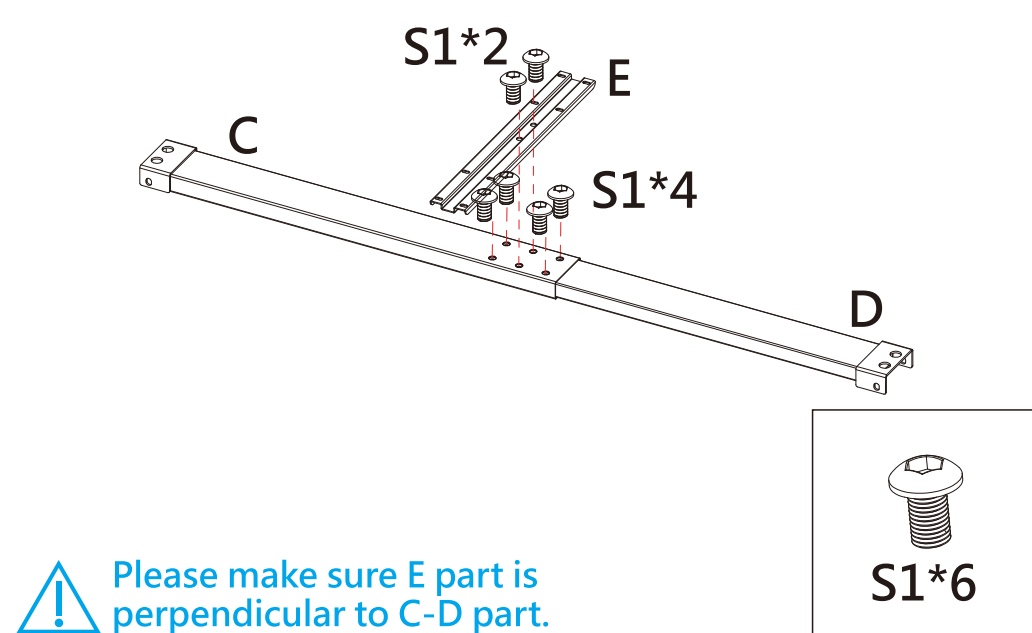


INSTALLATION GUIDE

STEP 1

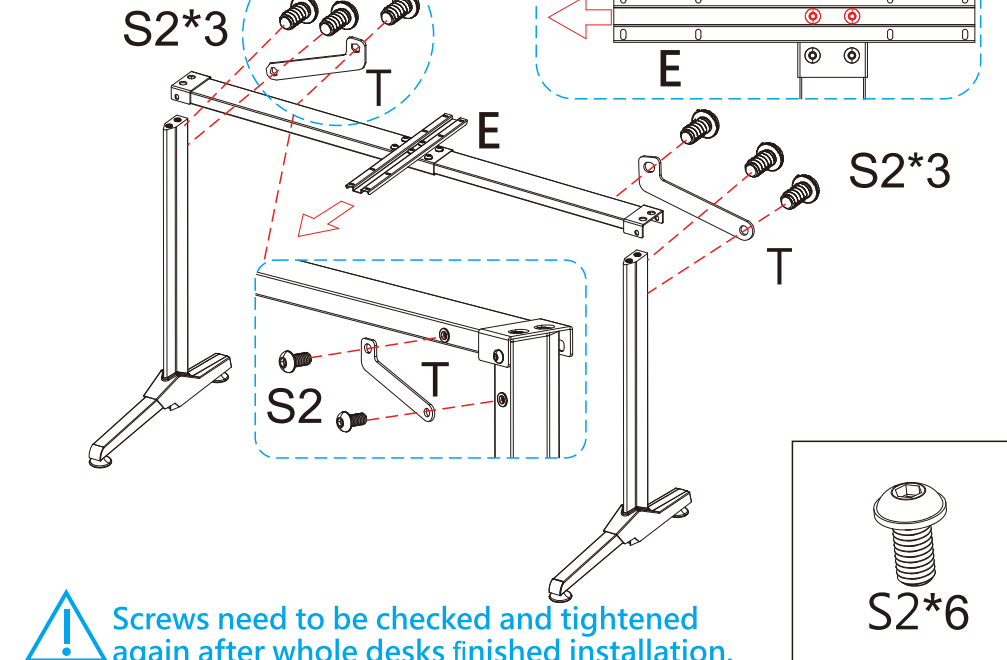


STEP 2



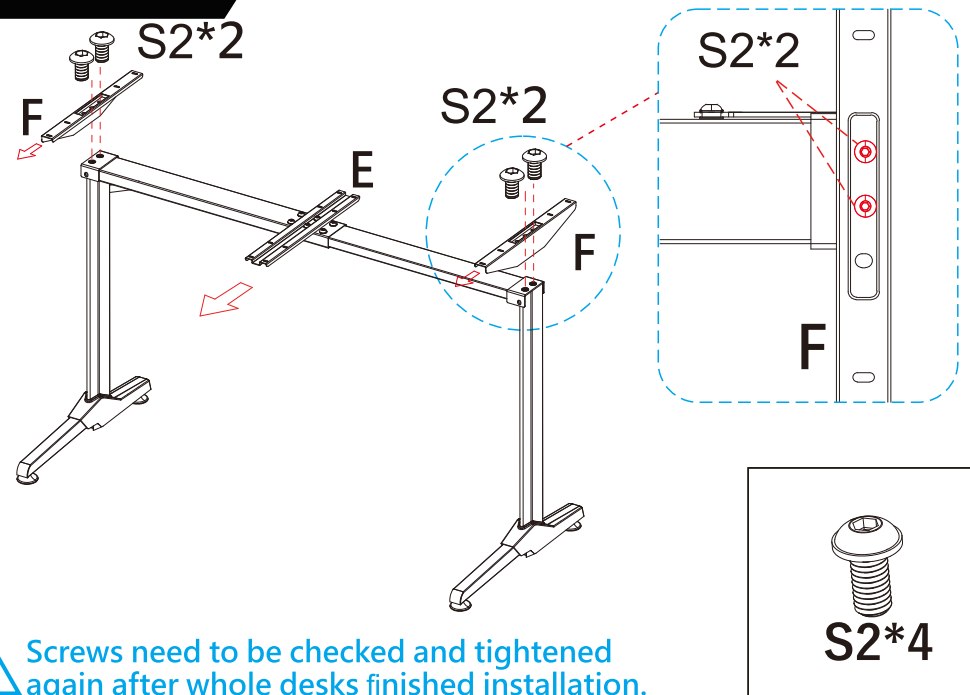
! Please make sure E part is perpendicular to C-D part.

STEP 3



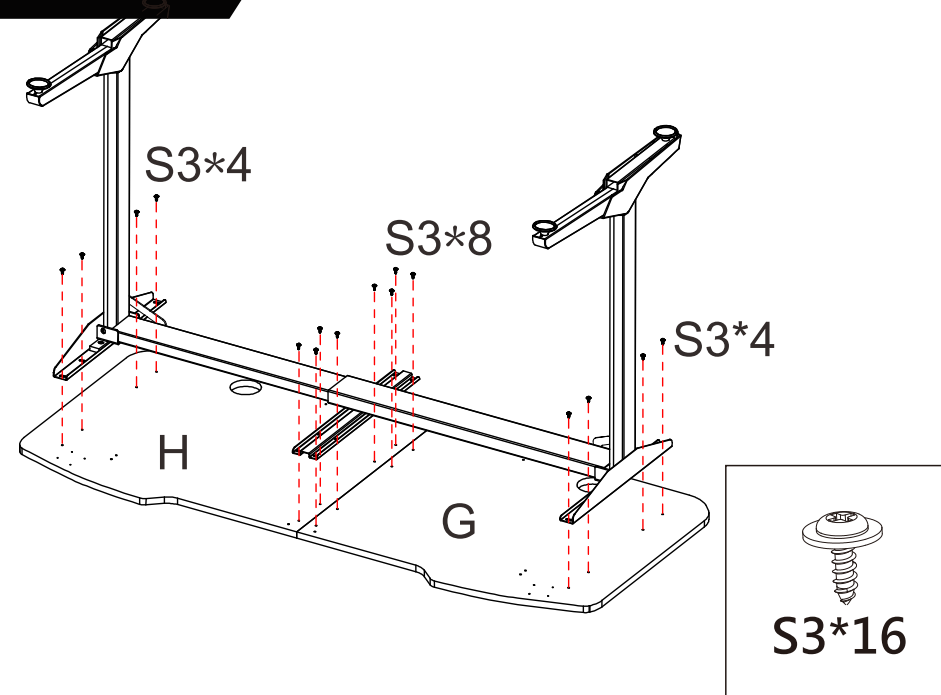
! Screws need to be checked and tightened again after whole desks finished installation.

STEP 4

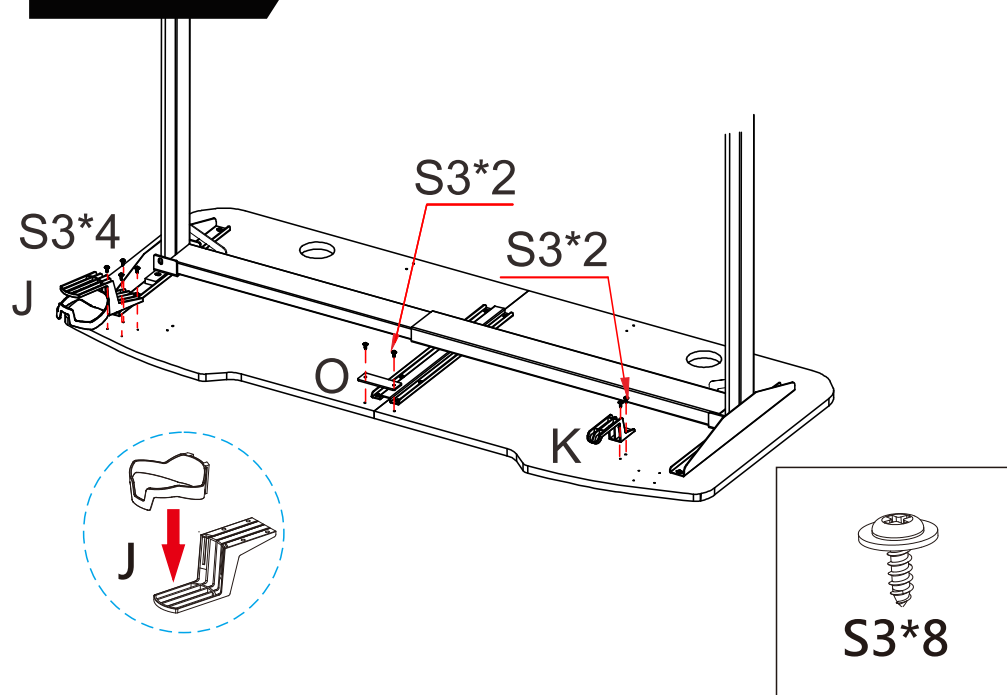


! Screws need to be checked and tightened again after whole desks finished installation.

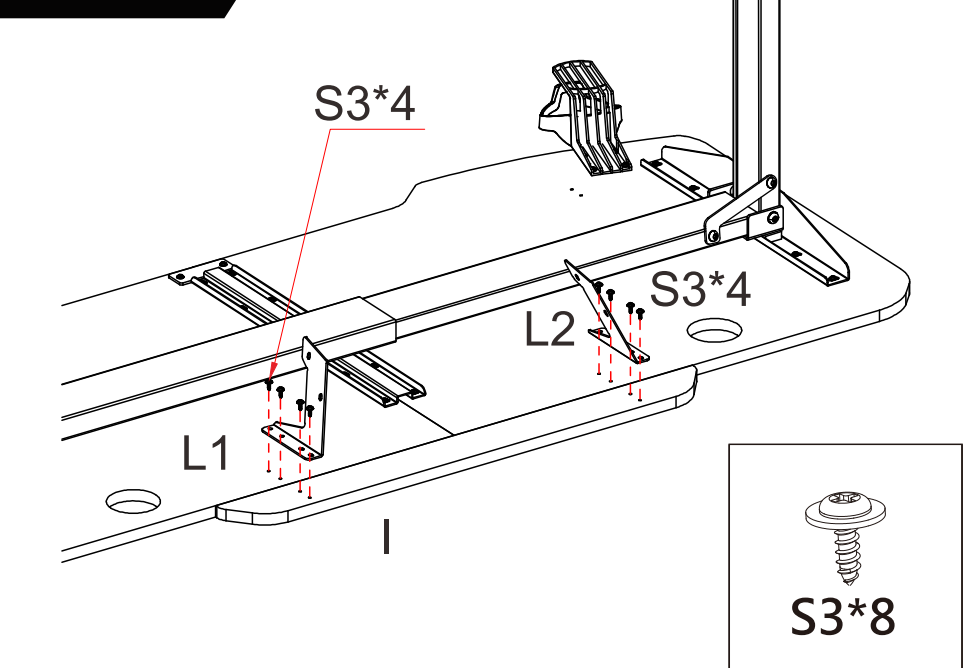
STEP 5



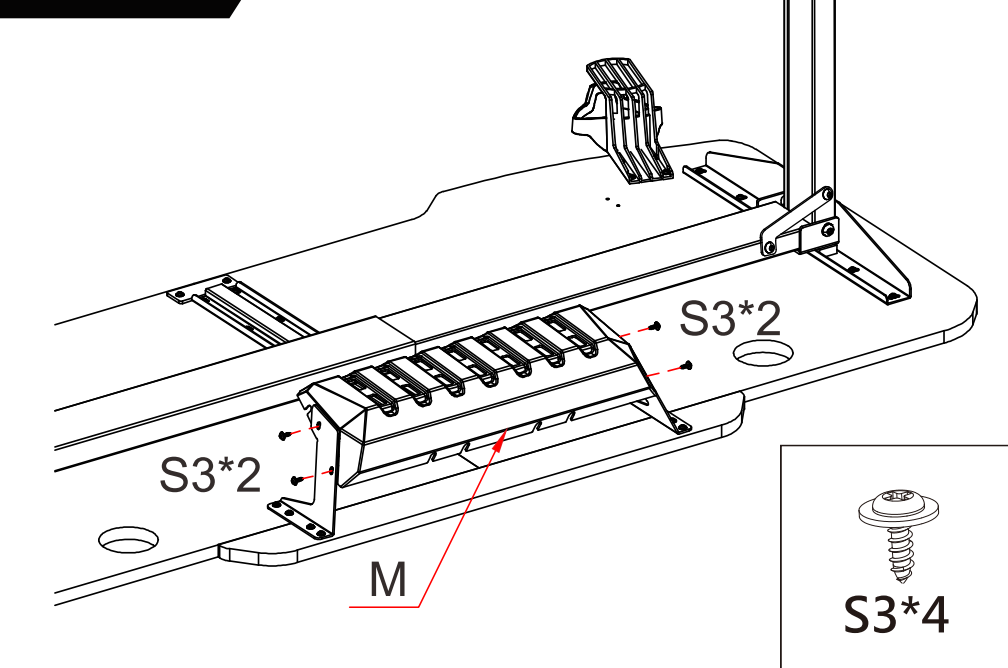
STEP 6



STEP 7



STEP 8



STEP 9

