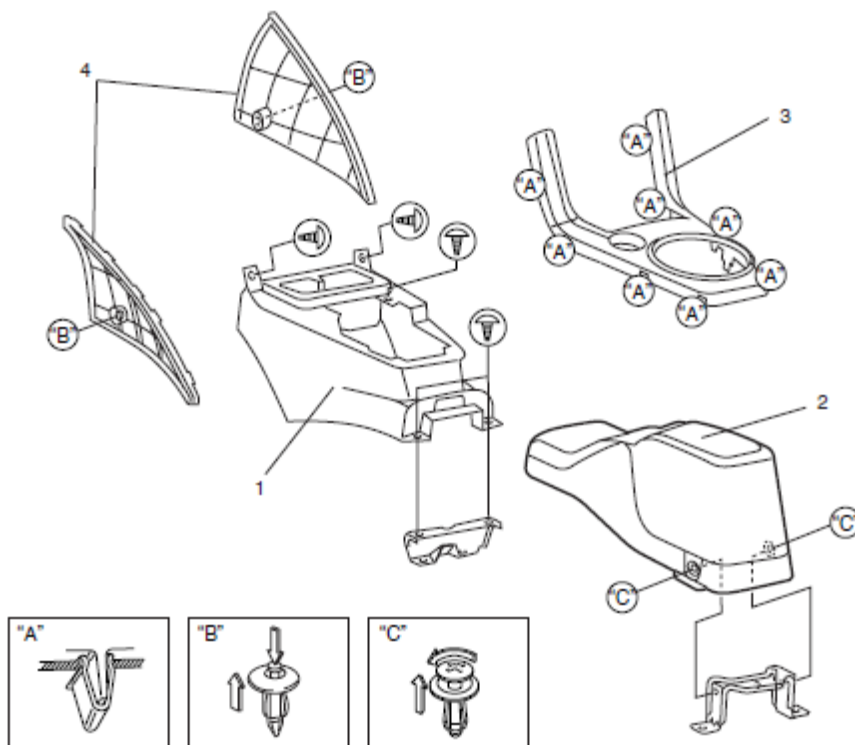


Short Shift Fitting Instructions

1. Pull the OEM gear knob off it is a push fit and will be very very tight.
2. Pull the plastic around the bottom of the gear gaiter to remove the gaiter which can be lifted off the gear shifter with the knob removed.
3. Remove all parts of the console box see below:



4. With this removed you have full access to the gear shift assembly. All remaining illustrations can be seen in figure 1.
5. Remove the cables which are a push fit.
6. Unbolt the unit from the car as it will be easier with the unit on a workbench. 4 x nuts.
7. Push inward the 3 clips on the white part where the ball of the shifter sits and pull this upwards and away from the shifter.
8. Remove the small circlip and gently tap the shaft with a hammer until the shaft is flush with the housing.

9. You should now be able to pull the shifter ball out of the black plastic again this will be very tight.
10. Release the spring from the shifter and you should now be in the position to reverse the process with your new shifter.

Figure 1.

