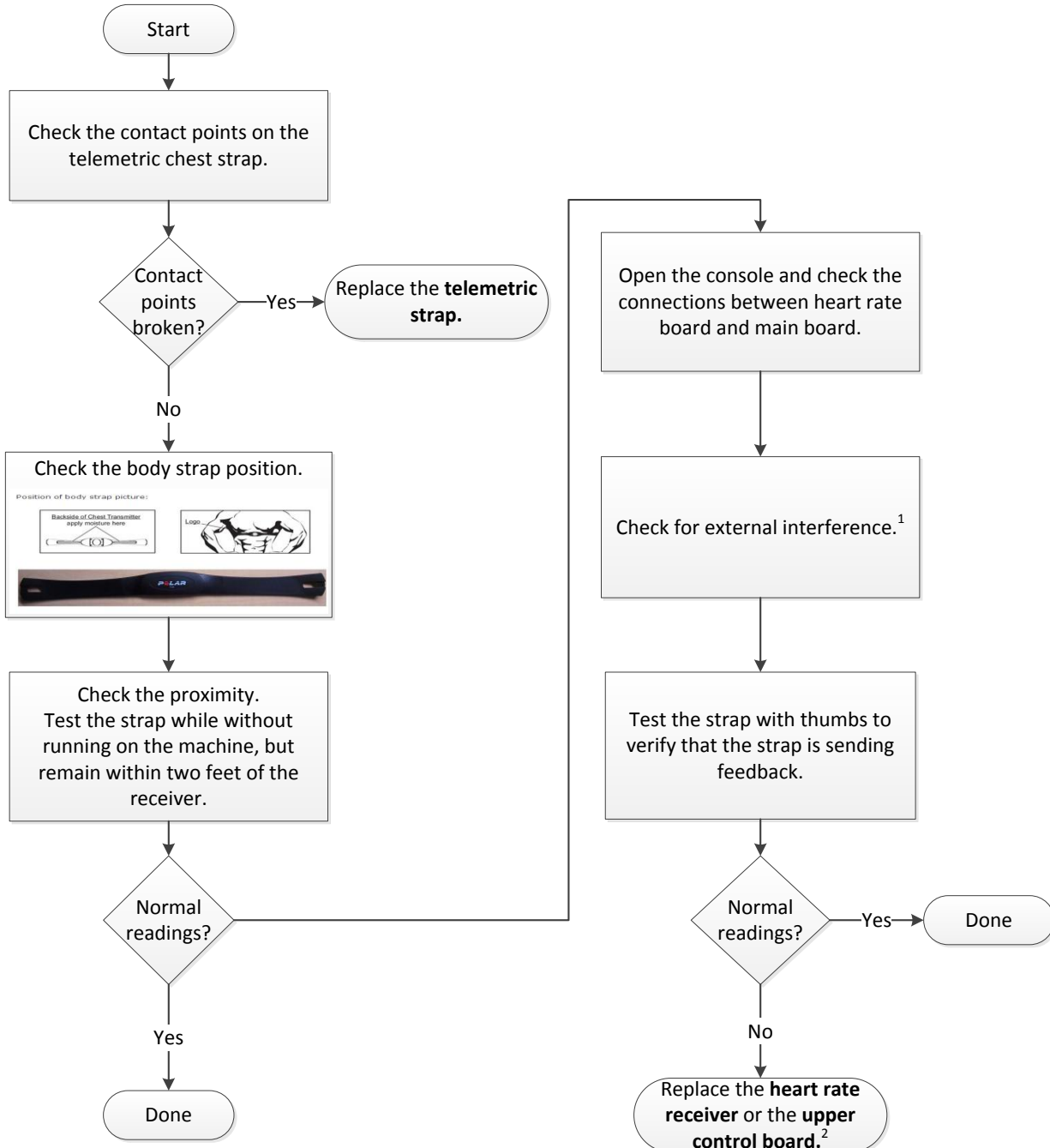


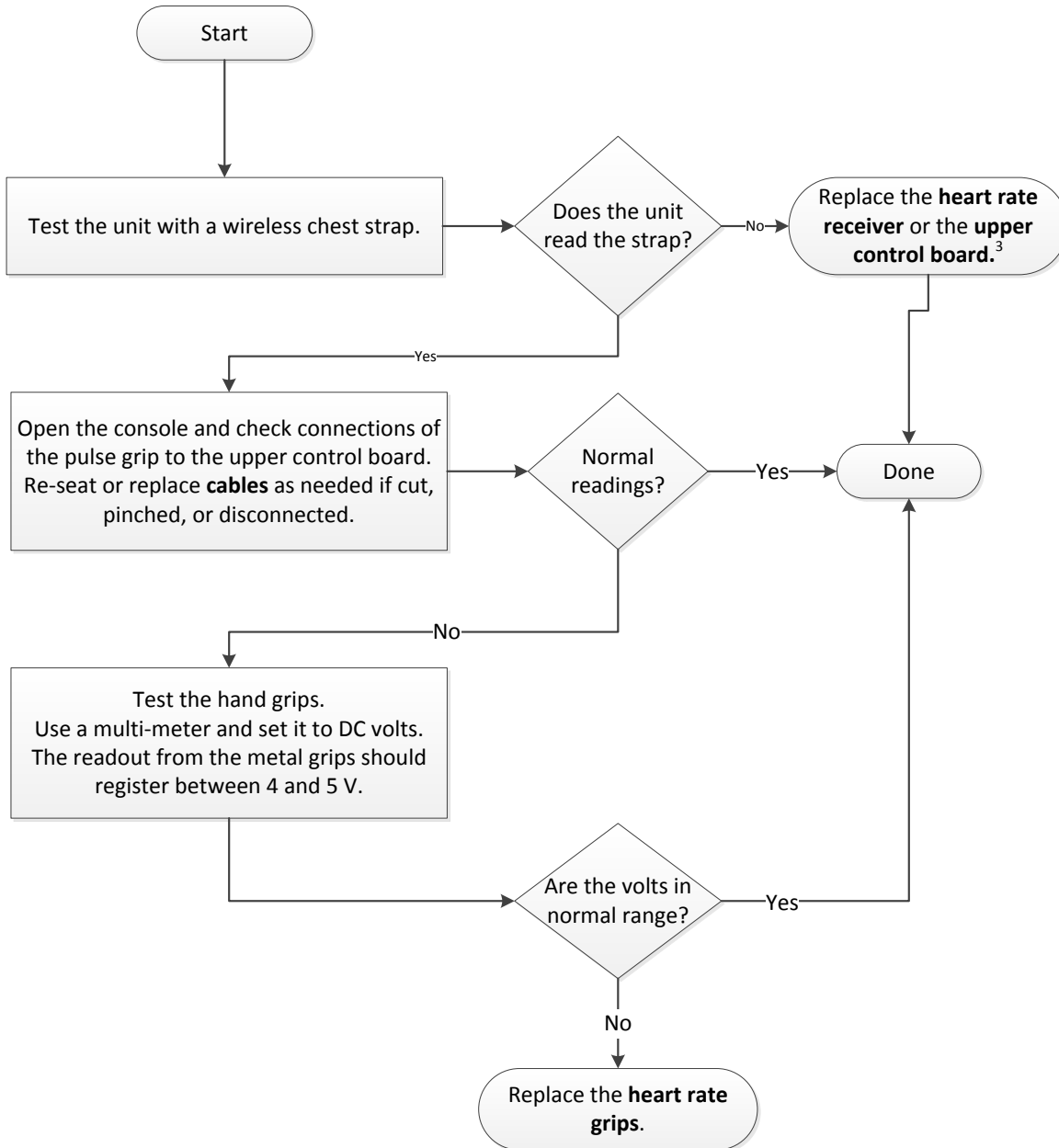
Telemetric Chest Strap



¹ Sources of external interference include underground fencing, home security systems, florescent lighting, wireless networks, computers, cell phone signals, appliances containing large motors, and anything omitting an electromagnetic current.

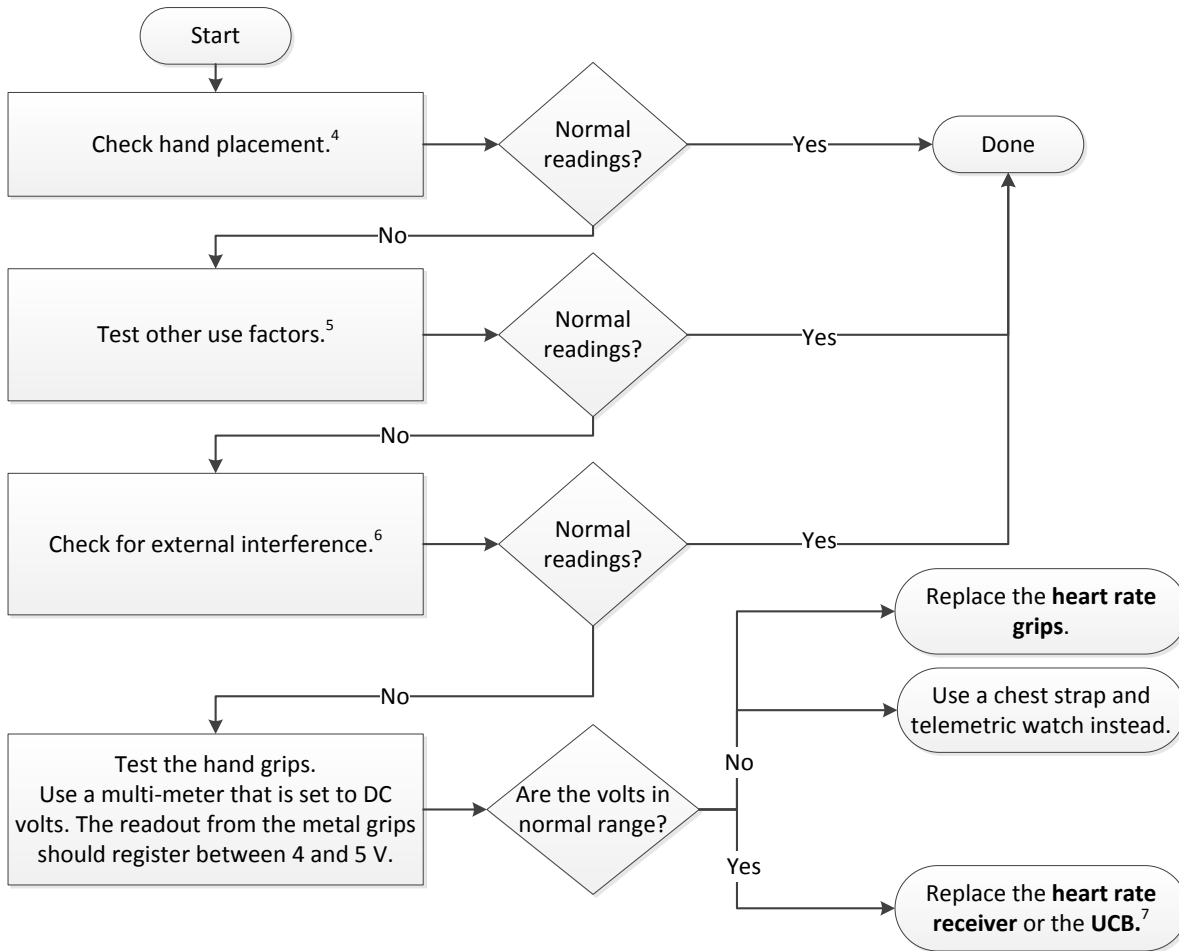
² The receiver's position on the frame varies by model. On some models, the receiver is soldered to the UCB. In these cases, order the full UCB with the attached receiver as replacement.

Heart Rate Grip – No Reading



³ The receiver's position on the frame varies by model. On some models, the receiver is soldered to the UCB. In these cases, order the full UCB with the attached receiver as replacement.

Heart Rate Grip – Erratic Reading



⁴ Follow these guidelines for proper hand grip: position your palms directly on the heart rate grip sensors, grip both sensors, keep a loose hold (holding too tightly may elevate your blood pressure), maintain grip for at least 20 seconds (it takes five consecutive heartbeats for your heart rate to register), and release your grip after the reading displays (you may experience an erratic readout if you consistently grip the pulse sensors while exercising).

⁵ The following conditions may contribute to an erratic readout: constant movement and vibration while running or walking (try stepping off to the side rails before taking a reading), heavy breathing during a workout, hands constricted by jewelry, dry or cold hands (try to moisten your palms by rubbing them together), heavy arrhythmia, arteriosclerosis, peripheral circulation disorder, thicker skin on the measuring palm, a weak power source (switch the power adapter or the power cord to a different outlet), or dirt and sweat accumulation (regularly clean the grip pulse sensors to ensure proper contact with the sensor).

⁶ Sources of external interference include underground fencing, home security systems, florescent lighting, wireless networks, computers, cell phone signals, appliances containing large motors, and anything emitting an electromagnetic current.

⁷ The receiver’s position on the frame varies by model. On some models, the receiver is soldered to the UCB. In these cases, order the full UCB with the attached receiver as replacement.