

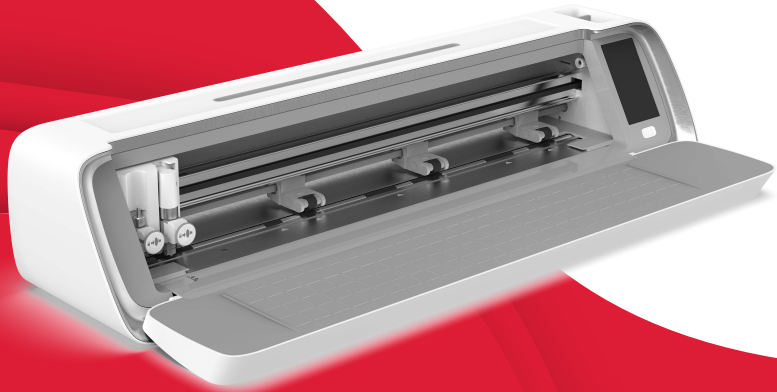


**SINGER**

| momento

# User Guide

Craft Cutting Machine



# IMPORTANT SAFETY INSTRUCTIONS

When using an electrical appliance, basic safety precautions should always be followed, including the following:

Read all instructions before using this product.

Keep the instructions at a suitable place close to the machine. Make sure to hand them over if the machine is given to a third party.

## **DANGER – TO REDUCE THE RISK OF ELECTRIC SHOCK:**

The machine should never be left unattended when plugged in. The electrical socket, to which the machine is plugged in should be easily accessible. Always unplug this machine from the electric outlet immediately after using and before cleaning, removing covers, lubricating or when making any other user servicing adjustments mentioned in the instruction manual.

## **WARNING – TO REDUCE THE RISK OF BURNS, FIRE, ELECTRIC SHOCK, OR INJURY TO PERSON:**

- This appliance is intended for use by adults. The appliance can be used with adult supervision by (i) children aged from 8 to 12 years and (ii) persons with reduced physical, sensory or mental capabilities or lack of experience and knowledge if they have been given instruction concerning use of the appliance in a safe way and understand the hazards involved. Cleaning and user maintenance shall not be made by children without supervision. It is not allowed for anyone to play with the machine. Children up to 8 years are not allowed to use the machine.
- Position the machine on a sturdy, level, and stable surface, and ensure that your workspace has sufficient space in both the front and back of the machine to enable the cutting mat to move through the machine without any obstruction.
- Do not allow to be used as a toy. Close attention is necessary when this machine is used by or near children.
- Use this machine only for its intended use as described in this manual. Use only attachments recommended by the manufacturer as contained in this manual.
- Never operate this machine if it has a damaged cord or plug, if it is not working properly, if it has been dropped or damaged, or dropped into water. Return the machine to the nearest authorized dealer or service center for examination, repair, electrical or mechanical adjustment.
- Never operate the machine with any air openings blocked. Keep ventilation openings of the machine free from the accumulation of lint, dust, and loose cloth.
- Please keep your fingers, hair, jewelry, loose clothing, and any other items away from all moving parts of the machine. It is especially important to exercise caution around the cutting blades.
- Always use the proper cutting blades, as using the wrong blades can cause them to break.

- Do not use bent cutting blades.
- Wear safety glasses.
- Switch the machine off (“O”) when making any adjustment in the cutting area, such as changing the cutting blades.
- Do not use outdoors.
- Do not operate where aerosol (spray) products are being used or where oxygen is being administered.
- To disconnect, turn all controls to the off (“O”) position, then remove plug from outlet.
- Do not unplug by pulling on cord. To unplug, grasp the plug, not the cord.
- Do not use the machine if it is wet.
- Please do not touch the mat or material during the cutting process, even if the mat or material has stopped moving. Only handle the mat or material once the machine has fully ejected it.
- If the LED lamp is damaged or broken, it must be replaced by the manufacturer or its service agent or a similarly qualified person, in order to avoid a hazard.

## **SAVE THESE INSTRUCTIONS**

# Federal Communication Commission Interference Statement

For the USA and Canada

Responsible party: Singer Sourcing Limited LLC  
1714 Heil Quaker Boulevard, Suite 130, LaVergne, TN  
37086

Product name: Singer Momento 24" Craft Cutting Machine

This device complies with Part 15 of the FCC Rules. Operation is subject to the following two conditions: (1) This device may not cause harmful interference, and (2) this device must accept any interference received, including interference that may cause undesired operation.

To satisfy radio frequency exposure requirements, a separation distance of 8" (20 cm) or more should be maintained between this device and persons during device operation. To ensure compliance, operations at closer than this distance is not recommended. The built-in antenna used for this transmitter must not be co-located in conjunction with any other antenna or transmitter.

This equipment has been tested and found to comply with the limits for a Class B digital device, pursuant to Part 15 of the FCC Rules. These limits are designed to provide reasonable protection against harmful interference in a residential installation. This equipment generates, uses and can radiate radio frequency energy and, if not installed and used in accordance with the instructions, may cause harmful interference to radio communications. However, there is no guarantee that interference will not occur in a particular installation. If this equipment does cause harmful interference to radio or television reception, which can be determined by turning the equipment off and on, the user is encouraged to try to correct the interference by one of the following measures:

- Reorient or relocate the receiving antenna.
- Increase the separation between the equipment and receiver.
- Connect the equipment into an outlet on a circuit different from that to which the receiver is connected.
- Consult the authorized SINGER® retailer or an experienced radio/TV technician for help.

The included interface cable should be used in order to ensure compliance with the limits for a Class B digital device.



*Any changes or modifications not expressly approved by the party responsible for compliance could void the user's authority to operate this equipment.*

This device contains licence-exempt transmitter(s)/receiver(s) that comply with Innovation, Science and Economic Development Canada's licence-exempt RSS(s). Operation is subject to the following two conditions: (1) This device may not cause interference. (2) This device must accept any interference, including interference that may cause undesired operation of the device

Cet appareil contient des émetteurs / récepteurs exemptés de licence conformes aux RSS (RSS) d'Innovation, Sciences et Développement économique Canada. Le fonctionnement est soumis aux deux conditions suivantes : (1) Cet appareil ne doit pas causer d'interférences. (2) Cet appareil doit accepter toutes les interférences, y compris celles susceptibles de provoquer un fonctionnement indésirable de l'appareil

## **TABLE OF CONTENTS**

# INTRODUCTION

## Intended Use

The optimal uses are described in these instructions. This product is not intended for industrial or commercial use

Additional assistance, by region, may be found online at [www.singer.com](http://www.singer.com).

You can find a digital version of this manual online at [singer.com/momento](http://singer.com/momento)

## Machine Overview — Front

1. Tablet / Phone Holder
2. Tool Storage
3. LCD Screen
4. ON/OFF switch
5. Camera
6. Pinch Wheels
7. Grift Shaft
8. Dual Tool Holder
9. Layflat Door
10. Auto Loading Sensor
11. Mat Guides

# Machine Overview — Back Side

1. Pinch Wheel Lever
2. Built-In Usb-B Port  
- To Connect Machine To Computer
3. Socket For Power Cord
4. Rear Extension Door

## Overview Accessories

1. Power Cord And Power Supply
2. Usb Connecting Cord
3. Basic Blade In Housing
4. Rotary Blade
5. The Basic Blade
6. Pen
7. Pen Adapter
8. 12"X 24" Mat



## Optional Accessories

Additional optional accessories are available for your machine. Check with your authorized SINGER® retailer or [singer.com](http://singer.com) for more information.

## Layflat Door — Front Flap

Gently pull down on the front flap to open the door. The door is designed to open and fold down smoothly, with a damping mechanism for smooth, effort-less opening.

Once the front door is open, it should rest flat on the surface and be flush with the cutting area.

When you are finished using the machine, simply close the front door, making sure it stays closed when the front door is closed and the flap is up.

*Note: The rear extension door provides support and stability to larger projects whether with a mat or matless. The machine can operate with the rear extension door up or down.*

## Preparations — Unpacking The Machine

Verify that you have received all contents. Please contact support if anything is missing.

Remove all protective packaging from machine and accessories before turning machine on.

Due to shipping, the cutting mat may have become slightly rounded from being in the box. If this happens, please lay the mat on a flat surface to straighten it.



## Setting Up Machine

1. Place your machine on a sturdy, horizontal surface. Make sure there is enough room both in front and behind the machine for the material to move in and out of the machine while cutting.
2. Connect the power adapter to the machine and then plug it into a wall outlet.
3. Open the layflat door of the machine.
4. Press the power button located under the LCD screen of the machine to turn it on. The lights will turn on and the machine heads will calibrate.
5. Wait until the machine beeps, indicating that it is ready to use.

After downloading the software, you will receive a step-by-step installation guide that will guide you through the process. Simply follow the prompts displayed on the screen to initiate the installation.

To create a free user account and download the software, visit [mySewnet.com](http://mySewnet.com).

*Note: After turning off the machine, residual power may remain in the machine. This could cause the light to stay on for a few seconds while the power is consumed. This is normal for an energy efficient appliance.*

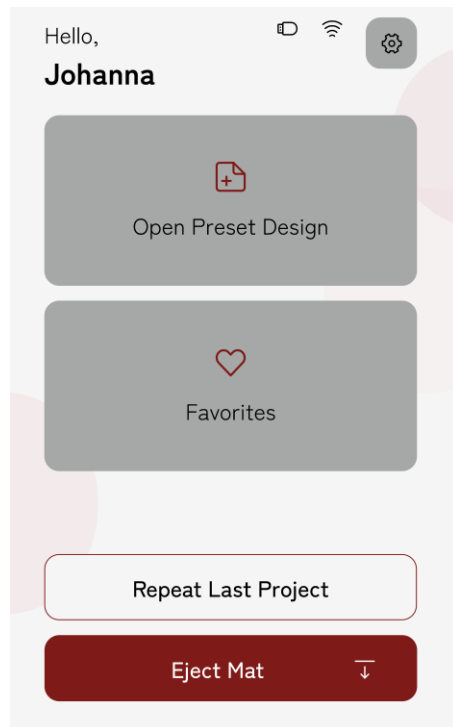
## MySewnet Crafting Software

To get started and unleash the full power of your SSinger Momento Craft Cutting Machine, visit the mySewnet website at [www.mysewnet.com](http://www.mysewnet.com) to download the mySewnet Crafting software.

The software provides guidance and tutorials for both beginners and advanced crafters alike. Whether crafting is a hobby or you are a professional, the mySewnet Crafting software can help you release your creativity and bring your ideas to life.

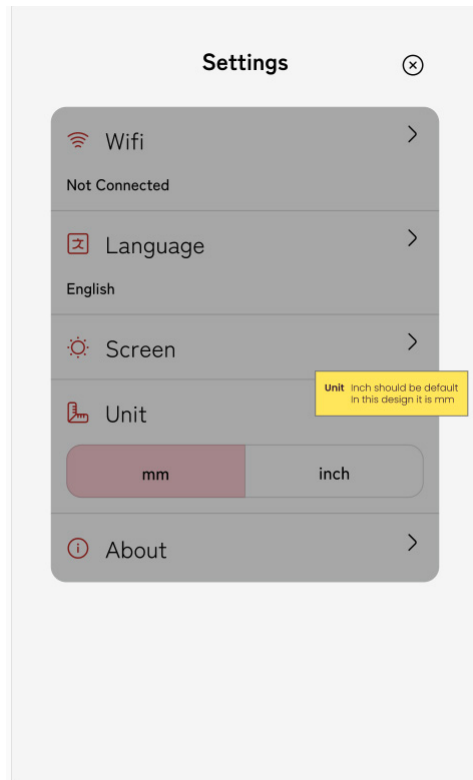
### LCD Screen

1. USB
2. Settings
3. Wifi
4. Open Preset Design
5. Favorites
6. Repeat Last Project
7. Load Mat



# LCD Screen: Settings

1. Wifi
2. Language
3. Camera
4. Screen Brightness
5. Unit Settings
6. About



## Connecting the Machine to Computer Via USB

To operate your machine, ensure that it is connected to a power source and that it is turned on. The machine can be connected either via USB or Wi-Fi. If both options are available, it is recommended to use Wi-Fi as the primary connection method.

The machine comes with a USB cord for connecting it directly to a computer for cutting.

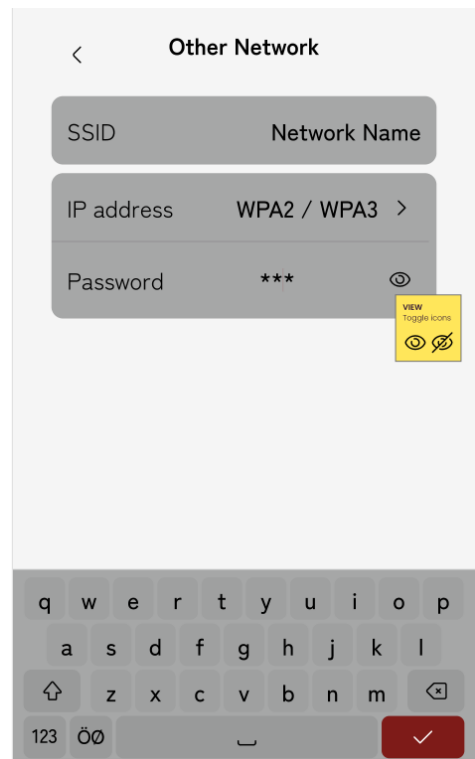
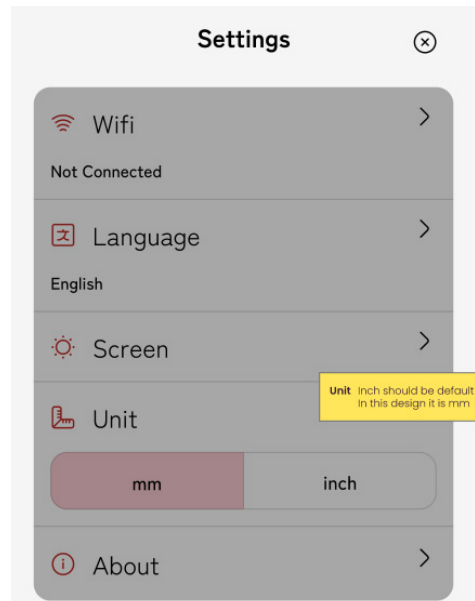
1. Locate the USB-B port on the right side of the back of the machine, left side of back of the cutter.
2. Plug the USB cord into the USB-B port on the machine.
3. Connect the other end of the USB cord to an available USB port on your computer. Once connected, your computer should automatically detect the machine.
4. Follow the prompts on your computer screen to set up and use the machine accordingly.

# Connecting the Machine to Computer Via WIFI

To begin the onboarding process for your machine, simply power it on. Connecting to WiFi is an essential step in this process. When prompted, follow the instructions displayed on the screen to set up your WiFi connection. Follow the steps below to connect your machine.

1. Using the machine's display, select your preferred language.
2. Go to the machine's Wi-Fi settings and select "Connect to Network."
3. A list of available Wi-Fi networks should appear. Choose the network you want to connect to.
4. Once the network is selected, the network information will appear. Press 'Connect to this network.'
5. When prompted, enter the Wi-Fi password and touch the confirm button to continue.
6. Wait for the machine to connect to the network. Once it is connected, the display should show a "Connected" pop-up.
7. Next, you will need to give a nickname to your machine. Using the machine's display, enter a name of your choice.

**All done!** You should now be able to access your machine wirelessly from your computer. To confirm that the machine is connected, you can try sending a test cut to the machine.



## To change the blade

1. The blade housing should be removed from machine before changing out the blade.
2. Choose new blade and remove the plastic cover.
3. While holding the housing push the silver button on top of housing.
4. The blade will extend out, enabling it to be grabbed
5. Grip the blade and pull out.
6. Take the new blade and insert it into the housing. Then, release the silver button located on the top of the housing. A magnet inside the housing will hold the blade securely in place.
7. Put the old blade safely away

*Note: Taking these precautions and following the steps carefully will help ensure that the blade is installed correctly and safely in the blade holder, minimizing the risk of damage and maximizing its performance during cutting. To find instructions on replacing additional blades, visit [Singer.com](http://Singer.com).*

## **Installing Cutting Blade On Machine**

1. Pull the locking mechanism out.
2. Insert the cutting blade into the right slot (A).
3. While the locking mechanism is pulled out, ensure that the grooves on the blade line up with the groove on the mechanism.
4. When the blade appears to be seated properly, release the mechanism.
5. If you can move the blade, then it is not inserted properly. Check that the locking mechanism is properly aligned with the blade.

## **Removing Cutting Blade**

1. Pull the locking mechanism out.
2. Remove the cutting blade from the right slot (A).

## **Installing Pen**

1. If there is a notch on the top of the pen, make sure that the housing fits into the notch on top of the carriage.
2. Insert the pen into the left slot.
3. Pull the locking mechanism out.
4. While the locking mechanism is pulled out, ensure that the grooves on the pen line up with the groove on the mechanism.
5. When the pen appears to be seated properly, release the mechanism.
6. If you can move the pen, then it is not inserted properly. Check that the locking mechanism is properly aligned with the pen.

## Installing Rotary Blade

1. Insert the blade into the right slot.
2. Pull the locking mechanism out.
3. While pulling out the locking mechanism, make sure that the grooves on the blade align with the groove on the mechanism. The rotary blades have teeth on the top that should insert into corresponding holes on the top of the carriage
4. When the blade appears to be seated properly, release the mechanism. The blade should light up if it is inserted correctly.

*Note: If the blade does not light up, then it is not inserted properly. Check that the locking mechanism is properly aligned with the blade.*

When the blade is inserted or removed, the mechanism will automatically lock when released.



## Pinch Wheels

1. Locate the pinch wheel lever at the back-right side of the machine.
2. To raise the pinch wheels, pull down the lever. To lower the pinch wheels, release the lever. Lift the lever up to unlock and down to lock.
3. Adjust the pinch wheels to the size of the mat or material cutting.
4. When the pinch wheels are in the desired position, push the lever down to lock.

5. To move the pinch wheels back to the best position for mat cutting, line up the arrows on the rollers with the arrows on the machine.

6. The right pinch wheel can move left and has a stopper at the far right to prevent it from going over the guide.

*Note: Right pinch wheel must always be in contact with right side of material or cutting mat.*

7. The far-left pinch wheel is locked and cannot be moved.

*Note: Always make sure to adjust the pinch wheels to the appropriate size and position for the material being cut to ensure proper grip and accurate cut*

*Note: For a pinch wheel to grip properly, it must be positioned over a grift shaft. There are two grift shafts located across the roller bar.*

# How to load the mat



You can load the mat anytime during your project process before cutting.

1. Slide the mat underneath the guides on the left and right sides of the machine, making sure it is aligned properly.
2. Line up the mat with the pinch wheels and push it up against the rollers to hold it securely in place.
3. On the screen, touch the "Load Mat" button to load the mat into the machine.

The mat will feed in and out automatically and stop with the top of the mat under the rollers, and the top of the material lined up with the blade housing.

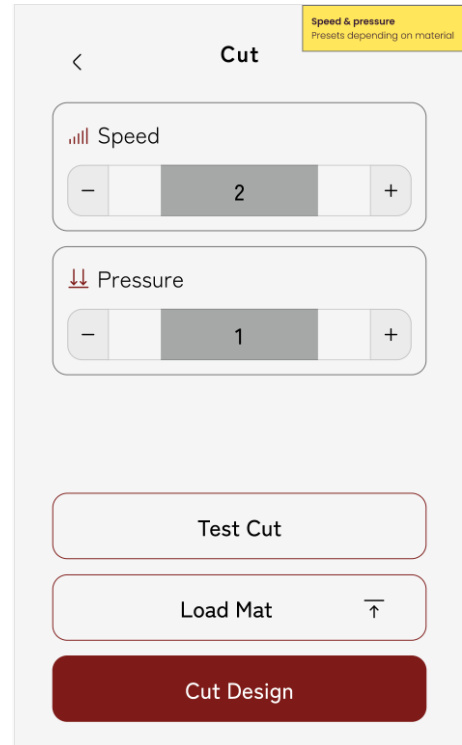
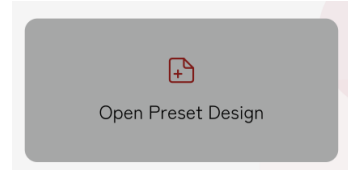
After the cut is complete, the mat will automatically unload.

*Note: The material will always be aligned to the top left corner of the mat for consistent cutting results.*

## Starting a Cut

This instruction will walk you through the steps to start a cut on the machine effectively. Whether you prefer to choose a preset design or send a design from the software – we've got you covered. Let's get started!

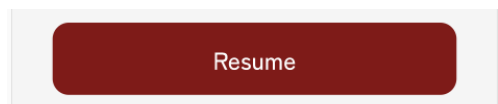
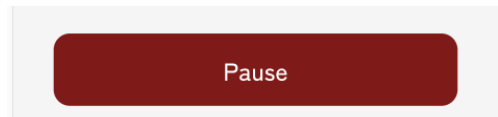
1. To begin, select a preset design or send a design from the software to the cutting machine.
2. Once the design is selected, the LCD screen will display the 'Cut Design' button. If you haven't loaded your mat yet, the machine will prompt you to do so.
3. Press the 'Start Cut' button on the screen to initiate the cutting process and bring your design to life!
4. After the cut is complete, your machine will automatically eject the mat, allowing you to admire your finished creation!



## Canceling a Cut

To cancel a cut from the machine:

1. Touch the pause button on the screen to pause the cutting process.
2. If you want to continue the cut, touch the resume button.
3. To cancel cut press stop project on screen. The material will unload and the cutting head will return to the start position



## Matless cutting – only for selected materials

Matless cutting, provides a convenient and efficient option for specific materials such as vinyl and adhesive-backed materials like sticker paper. This method eliminates the need for a mat, streamlining the cutting process and saving valuable time. By directly feeding these materials into the cutting machine, you can achieve precise and clean cuts without the extra step of mat preparation. Additionally, matless cutting allows for greater flexibility in handling larger or longer materials that may not fit within the constraints of a standard cutting mat. Read the steps below to get started.

1. Push the pinch wheel lever up to the unlock position
2. To ensure the best results when using the cutting machine, adjust each pinchwheel to the correct size of your material. It is recommended that as many pinchwheels as possible make contact with the material. However, some materials may be too small for all four pinchwheels to make contact. In such cases, adjust the pinchwheels to make contact with as much of the material as possible for optimal results.

*Note: It is important that the last (far right) pinchwheel makes contact with the material to ensure proper feeding through the machine*

3. Once the pinchwheels are in the correct position, lower pinchwheel lever down to lock.
4. With the material lined up in the left-hand guide and against the rollers, push the load button.

5. The material will feed in and out until it reaches the starting position where it is under the rollers.
6. On the app, load the design and select "no mat" and the appropriate material.
7. Send the design to your machine. The machine will cut design and eject mat.

When the cut is complete, press the arrow button to unload the material.

*Note: It is recommended to perform a test cut when adjusting settings or starting new cuts. This ensures that the settings and pinchwheel positioning are correct for optimal results*

# Camera Calibration Guide for Left Pen

Camera calibration is an essential process to ensure precise positioning and accurate results when using the left pen on your machine. By following these step-by-step instructions, you can easily calibrate the camera for optimal performance.

Before you begin, make sure to gather the following items:

- Pen (included with the machine)
- Cardstock
- Mat

## Instructions:

1. Power on your machine and wait for it to initialize.
2. Place the cardstock on the mat, ensuring it is aligned properly, and gently press it under the pinchwheels to secure it in place.
3. Press the "Load Mat" button to load the mat into the machine.
4. Place the pen into the left tool holder securely.
5. Touch the settings button on the machine's and select the "Camera" option.
6. In the camera settings, choose "Adjust" to enter the calibration screen.
7. Once in the calibration screen, choose "Adj L" to begin the calibration process for the left pen.
8. The machine will automatically draw a "田" symbol on the cardstock. Allow the machine to finish the drawing.
9. Position the Red + Symbol:
10. After the drawing is completed, touch the middle position of the + symbol on the captured image displayed on the screen. Adjust its position close to the center and confirm by tapping "OK."
11. The machine will automatically create a blue dashed line to coincide with the + symbol in the captured image. Verify the alignment, and when satisfied, press "RET" to save the calibration parameters.

# Camera Calibration Guide for Right Tool Holder

Before you begin the calibration, make sure to gather the following items:

Items Needed for Calibration:

- Pen and Pen Adaptor (both included with the machine)
- Cardstock
- Mat

## Instructions:

1. Power on your machine and allow it to initialize.
2. Place the cardstock on the mat, ensuring proper alignment, and gently press it under the pinchwheels to secure it in place.
3. Press the "Load Mat" button to load the mat into the machine.
4. Take the pen adaptor and attach the pen securely into it. Now, load the pen with the adaptor into the right tool holder of the machine.
5. Tap the settings button on the machine's interface and select the "Camera" option.
6. In the camera settings, choose "Adjust" to access the calibration screen.
7. Once in the calibration screen, choose "Adj R" to initiate the calibration process for the right pen.
8. The machine will automatically draw a "田" symbol on the cardstock. Allow the machine to finish the drawing.
9. After the drawing is completed, touch the middle position of the + symbol on the captured image displayed on the screen. This will create a red + close to the center position of the + symbol. Confirm by tapping "OK."
10. The machine will automatically generate a blue dashed line to coincide with the + symbol in the captured image. Verify the alignment, and when satisfied, press "RET" to save the calibration parameters.



## Non-Original Parts and Accessories

The warranty does not cover any defect or damage caused by use of non-original accessories or parts.

## INTELLECTUAL PROPERTY

SINGER and the Cameo “S” Design are exclusive trademarks of The Singer Company Limited S.à.r.l. or its Affiliates. CONTOUR is an exclusive trademark of Singer Sourcing Limited LLC or its Affiliates. © 2023 The Singer Company Limited S.à.r.l. or its Affiliates. All rights reserved.



Please note that on disposal, this product must be safely recycled in accordance with relevant National legislation relating to electrical/ electronic products. Do not dispose of electrical appliances as unsorted municipal waste, use separate collection facilities. Contact your local government for information regarding the collection systems available. When replacing old appliances with new ones, the retailer may be legally obligated to take back your old appliance for disposal free of charge.

If electrical appliances are disposed of in landfills or dumps, hazardous substances can leak into the groundwater and get into the food chain, damaging your health and well-being.



*We reserve the right to change the machine equipment and the assortment of accessories without prior notice, or make modifications to the performance or design. Such modifications, however, will always be to the benefit of the user and the product.*



**MANUFACTURER**

VSM Group AB, **SVP WORLDWIDE**

Soldatorpsgatan 3, SE-55474 Jönköping, SWEDEN



*Reshape your crafting experience.*