

# NON-SLIP Scallop Template

Add a scalloped border to any quilt!  
Three sizes will fit 2" to 12" wide borders.

Designed by Krista Moser

#CGRSCALLOP  
Made in USA



Creative Grids® USA, Inc  
400 W. Dussel Dr. Ste B  
Maumee, OH 43537  
www.creativegridsUSA.com

Creative Grids® UK, Ltd.  
Unit 23A Pate Road  
Leicester Road Industrial Estate  
Melton Mowbray  
Leicestershire, LE13 0RG  
England  
www.creativegrids.com

SEE A DEMO  
SCAN WITH ANY  
QR READER



## NON-SLIP Scallop Template

Add that awe factor to any quilt by creating a scalloped border. The tool includes three sizes of scallops plus a corner unit.

**SMALL** - The small size is perfect for borders that are 2 to 5 inches in width.

**MEDIUM** - The medium scallop is ideal for 4 to 8 inch borders.

**LARGE** - And the large scallop works for borders up to 12 inches.

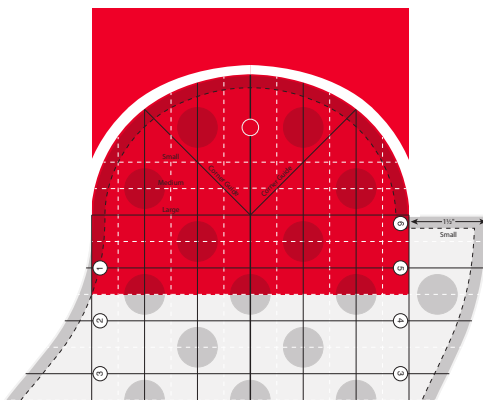
Since you are creating this design element with paper templates, they can be spaced or overlapped as needed to fit any length of border.

Don't you love built in fudge factors? **Hint: Design and mark the border before quilting so the scallop element can be showcased with quilting (and the machine quilter can attach straight sides to her frame).** Then use the tool to help trim the curves. Bind with a bias binding.

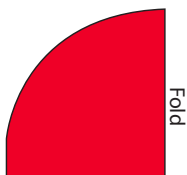
### Scallop Corner Units

To cut the corner placement units, take four pieces of paper 4 1/2" x 6", and lay them under the rounded corner. Cut along the edge of the template with a rotary cutter or trace with a pencil and use scissors to cut.

You will need four; one for each corner of the quilt.



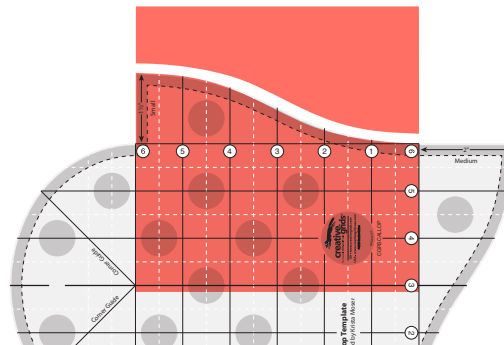
Fold the corner units in half to make a crease down the center as shown.



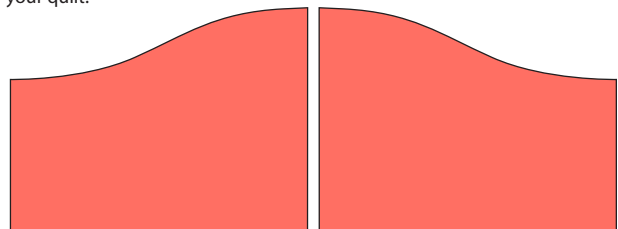
### Scallop Border Edge Units

For the scallop border edge placement units, cut several "hill-valley" units. My border is 4 1/2" wide, so I used 4 1/2" x 6" rectangles of paper. It is not necessary to make these paper templates the same depth as the border you are scalloping, but it might be a helpful guide.

Cut along the edge of the template starting at the valley and scooping up and off the end of the hill.



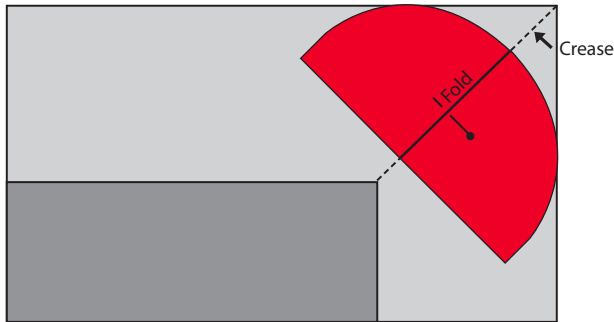
Make several templates like this: dozens may be needed for a large quilt. Turn half the stack over to see the mirror image hill-valley. This is the way they will be laid out down the sides and across the top and bottom of your quilt.



### Corner Placement

Press a crease at a 45-degree angle from the inside corner to the outside corner of the borders. This will help with the corner unit placement.

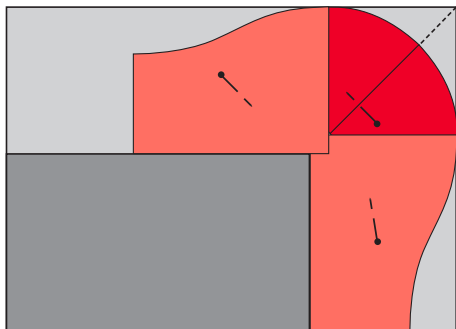
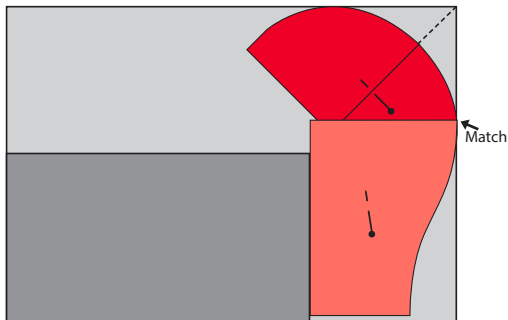
Place the paper corner units, with their fold line lined up, with the crease you pressed into the border, as shown. Pin in place. Repeat with all four corners.



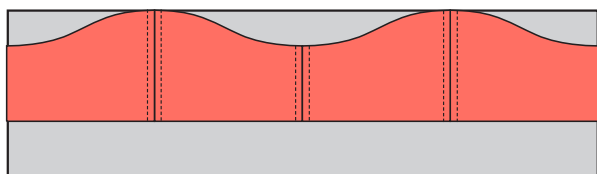
### Border Edge Placement

Lay the hill-valley unit into the top right corner of the quilt with the hill side nestled into the curve. This will make for a smooth transition from the rounded corner down into the valley of the first scallop.

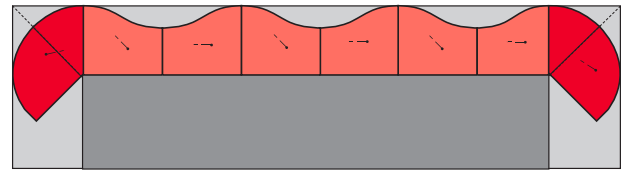
Repeat the first hill-valley placement with the top left corner and pin into place.



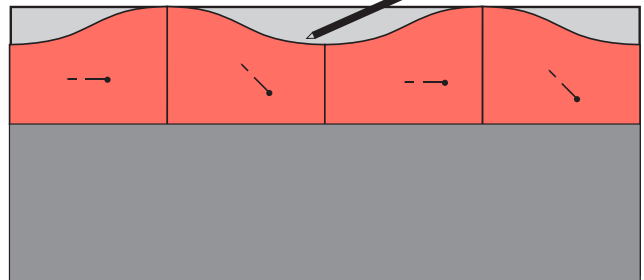
Arrange the scallop border edge placement units or "hill-valley" units along the top border, between the two corner placements that are pinned into place. Make adjustments by either overlapping the units or spreading them apart until they fit the length of the border. **It is important to make the same adjustments to both the hill side and the valley side. If you overlap the hill side by 1/2", you'll want to do the same overlap on the valley side.** (These adjustments can be from 1/8" - 1" while still keeping the integrity of the scallop shape.)



Once your adjustments are finished, pin all the paper templates into place.



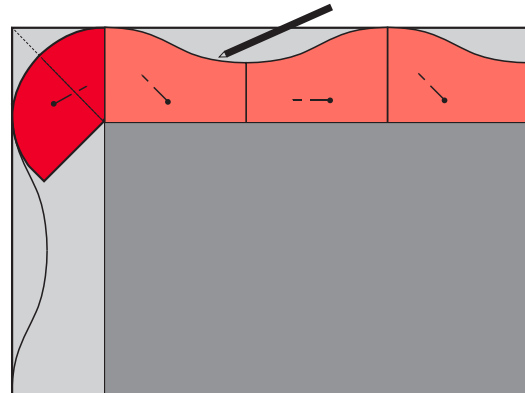
Use a fabric marking pen to trace the scallop edge along the paper templates.



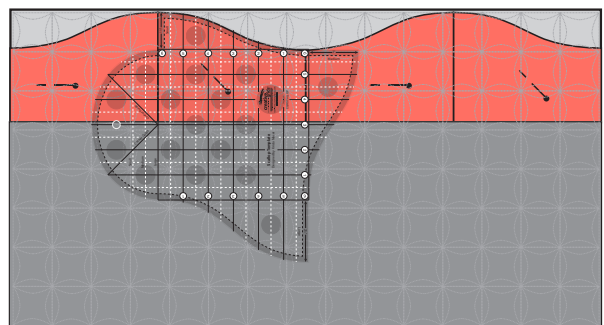
Remove the hill-valley paper templates, but leave the corners in place. Those will be needed for the placement going down the side borders.

The side borders may be longer which allows for the adjustments between the templates to be spread apart instead of overlapping. As before, make sure the adjustments are the same on both the hill side and the valley side of the template.

Use a fabric marking pen to trace along the template edge down the side, like the top border.



Repeat this process for all four sides. Remove the paper templates. Now you are ready to quilt! **Hint: Design and mark the border before quilting so the scallop element can be showcased with quilting (and the machine quilter can attach straight sides to her frame).**



Once the quilt is quilted, you can use the template itself to cut the hills and valleys with a rotary cutter. Cut the rounded corners, then rotate the template to cut down the hill. Once you reach the valley, turn the ruler over to cut out of the valley and up the next hill.