

NON-SLIP 8" Log Cabin Trim Tool

The Log Cabin Ruler features exclusive markings to help you create perfect 8" finished Log Cabin, Half Log Cabin, or Courthouse Step blocks. Since each round is squared up before the next set of logs are added, the results are spectacular.

Designed by Jean Ann Wright



#CGRJAW1
Made in USA



SEE A DEMO
SCAN WITH ANY
QR READER



Creative Grids is covered by U.S. Trademark Registration No. 2,796,615

www.creativegrids.com
Leicestershire, LE13 0RG England
Melton Mowbray
Leicester Road Industrial Estate
Unit 23A Pate Road
Creative Grids® UK, Ltd.

www.creativegridsUSA.com
Maumee, OH 43537
400 W. Dussel Dr. Ste B,
Creative Grids® USA, Inc.



NON-SLIP 8" Log Cabin Trim Tool

Cutting Instructions for Log Cabin, Courthouse Steps, Half Log Cabin Blocks

Block size: 8" finished

Center squares: Cut a precise 2-1/2" square

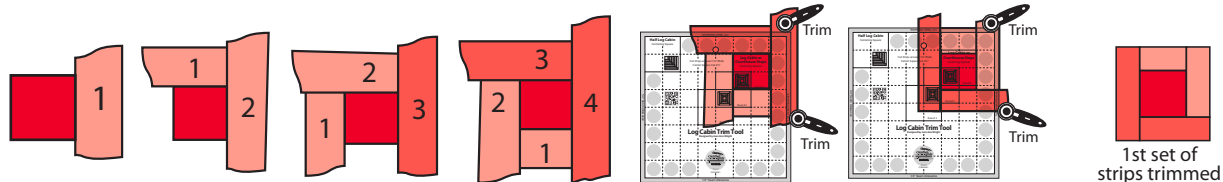
Strips: Cut the strips any width as long as they are at least 1-3/4" wide. All strips must have a straight rotary cut edge on one long side. The strip ends and the opposite long side of the strips do not need to be rotary cut, they can be ripped, wavy or angled as the strips will be trimmed after sewing using the Log Cabin Trim Tool. Cut all strips slightly longer than needed.

Sewing and Trimming Sequence for the Log Cabin Block

Note: The blocks are constructed by adding each new strip in a clockwise direction. Sew all seams with a scant 1/4" seam allowance. As you add each strip, fold the new strip out with the seam allowances towards the outside edge. Press the seams as you sew.

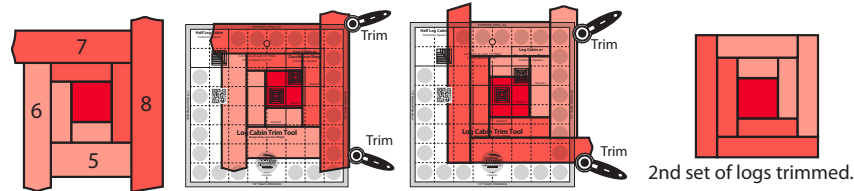
1st Set of Strips

1. With the right side of the 2-1/2" center square facing UP, place a strip that is slightly longer than 2-1/2" on top of the square with the right side facing DOWN. Stitch and press.
2. Turn the center square in a counter-clockwise direction, adding strip #2 in a clockwise direction. Stitch and press.
3. Following the method in step 2, add strips #3 and strips #4. The first set of strips around the center square is ready to trim.
4. Position the Log Cabin Trim Tool with the outside square on the tool over the center square of the pieced unit. Trim up the right side and across the top. Turn the pieced unit a half turn with untrimmed sides positioned to trim up and across.



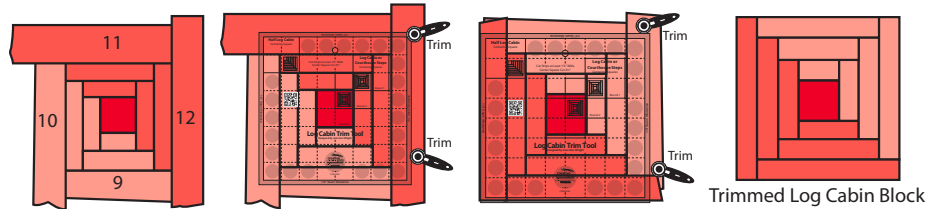
2nd Set of Log Cabin Strips

5. Repeat Steps 1 through 4 as you add the strips for the second set of strips (numbered 5 though 8) around the center square. Trim the block in the same manner as Step 4.



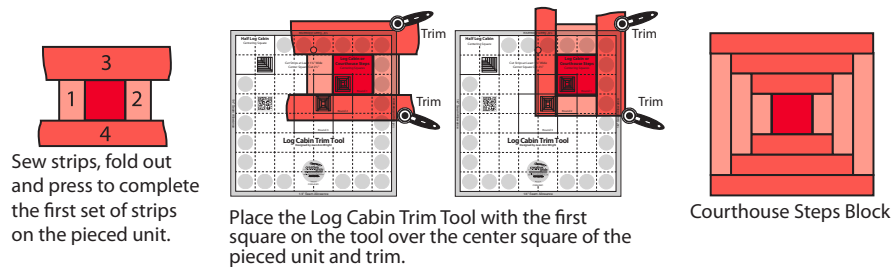
3rd Set of Log Cabin Strips

6. Repeat Steps 1 through 4 as you add the strips for the third set of strips (numbered 9 though 12) around the center square. Trim the block in the same manner as Step 4.



Sewing and Trimming Sequence for the Courthouse Steps Block

The Courthouse Steps block is similar to the Log Cabin block with the strips added in sequence to opposite sides, then the top and bottom of the center square. As you add strips fold out and press. Trim each set of strips as they are added.



Sewing and Trimming Sequence for the Half Log Cabin Block

IMPORTANT NOTE: Cut a 2-3/4" corner square – not a 2-1/2". (By increasing the size of the square for the Half Log Cabin, two sides of the pieced block will not be trimmed until the final round.) To create a Half Log Cabin Block add strips in sequence to two adjacent sides of a center square. As you add a set of strips, fold out and press. Each set of strips is then trimmed on two sides after sewing. Add five additional sets to make the block. After adding the last set, trim around the entire block.

