

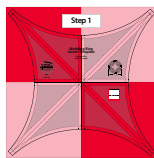
Wedding Ring Center Template, Four-Patch Block

Pieced Background, Option One:

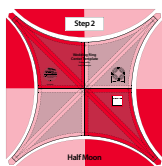
Four 6" squares are sewn together to complete one four-patch unit. Preferably, each four-patch is made using four different fabrics. The seams are pressed clockwise on the backside of the fabric.

Note: You will find the 45mm and 60mm rotary cutter will save time and improve accuracy as you cut the individual pieces with your templates.

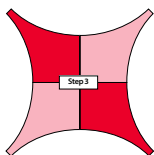
Step 1. Place the **four-patch** unit right-side-up onto your cutting surface. Place the Center Template as shown on your fabric. The **solid white intersecting lines**, printed on the template are lined up with the seam lines on the **four-patch** unit.



Step 2. The **Half Moon** crescent shapes are cut out of each side.



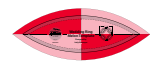
Step 3. The remaining fabric at the tip of each corner is trimmed off to complete the cutting.



Step 4. The half moon shapes are sewn together to complete the piecing for the melons. Press the seams open.



Step 5. Place the ruler on your fabric. The center line printed on the Melon Template is lined up with the joining seam line on your fabric.



Step 6. The remaining fabric is trimmed off to complete the cutting.

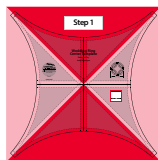


Wedding Ring Center Template, Quarter-Square Triangle

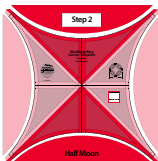
Pieced Background, Option Two:

One 13" square cut diagonally two times yields (4) quarter-square triangles. Four quarter-square triangles, preferably each from a different fabric, are sewn back together to complete one quarter-square unit. The seams are pressed clockwise on the backside of the fabric.

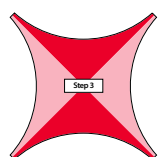
Step 1. Place the **quarter-square** unit right-side up on your cutting surface. Position the Center Template onto your fabric. The **solid black intersecting lines** printed on the template are lined up with the seam lines on the **quarter-square** unit.



Step 2. The **Half Moon** crescent shapes are cut out of each side.



Step 3. The remaining fabric at the tip of each corner is trimmed off to complete the cutting.



Step 4. The half moon shapes are sewn together to complete the piecing for the melons. Press the seams open.



Step 5. Place the ruler as shown on your fabric. The center line on the template is lined up with the joining seam line on your fabric piece.



Step 6. The remaining fabric is trimmed off to complete the cutting.



Illustration 1:

Position the individual pieces as shown below. You will need to identify the A and B Units.

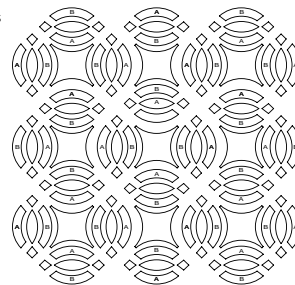


Illustration 2:

1. The corner pieces are sewn onto the B-Units.
2. Press the seams facing toward the corner pieces.
3. The A-Units are sewn onto the melon pieces.
4. Press the seams facing toward the A-Unit.

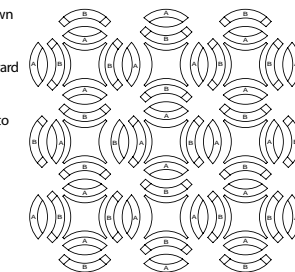


Illustration 3:

1. The Center Template pieces are sewn onto the B-Units.
2. Press the seams facing toward the Center Template pieces.
3. The remaining B-Units located around the outer edge of the quilt are sewn onto the A-Units.
4. Press the joining seams toward the B-Unit.

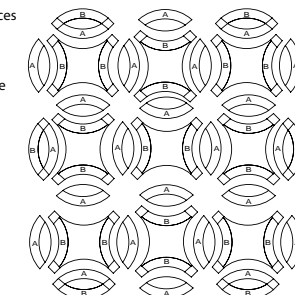


Illustration 4:

1. The B-Units are sewn onto the A-Units.
2. Press the joining seams facing toward the Melon.

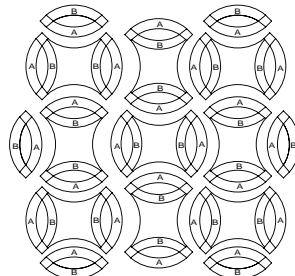
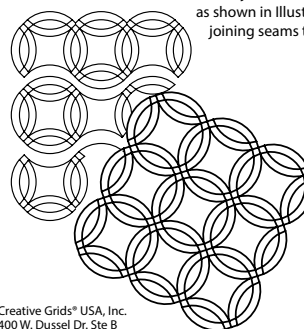


Illustration 5:

The Center Template pieces are sewn onto the A-Units. First the units are sewn into rows, then the rows are joined to complete the quilt as shown in Illustration 5. Press the joining seams toward the A-Unit.



Creative Grids® USA, Inc.
400 W. Dussel Dr. Ste B
Maumee, OH 43537
www.creativegridsUSA.com

Creative Grids® UK, Ltd.
Unit 23A Pate Road
Leicester Road Industrial Estate, Melton Mowbray
Leicestershire, LE13 0RG England
www.creativegrids.com

Creative Grids is covered by U.S. Trademark
Registration No. 2,796,615

CGRDWR



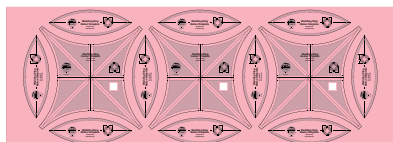
7 43285 00158 3

Wedding Ring Center Template

Background, Option Three:

One 15" x 42" strip yields (3) Center Template pieces and (10) Melon Template pieces. If the number of pieces you need requires more than one strip, the strips can be stacked so several layers of fabrics are cut at the same time.

1. Position the Center and Melon Templates onto your fabric and cut the required pieces for your quilt.



Unit A & B Template:

Each arc is cut from (1) 11-1/2" x 4" rectangle. Four rectangles are cut for each ring. Preferably each ring would be cut from a different color. The cutting is completed by trimming around the arc template.



Corner Template:

Choose two accent fabrics for the corner pieces. An equal amount of 3" squares are cut from each fabric. The squares are stacked so several layers of fabrics can be cut at one time. The cutting is completed by trimming around the corner template.



Judy Niemeyer has partnered with Creative Grids® to design a set of Wedding Ring Templates that can be used when trimming the excess paper and fabric from any of her foundation units created and used in her Wedding Ring Patterns. Buying the Creative Grids® Wedding Ring Templates will take the fear out of free-hand trimming on the foundation papers she uses to make the arcs, melon, and center pieces in her Wedding Ring Quilts.

To view available Quiltworx patterns for use with these Wedding Ring Templates, visit Judy's website at: www.Quiltworx.com.

Creative Grids® Wedding Ring Templates were designed to improve accuracy in your cutting by providing you with a solid, stable, and secure cutting edge. You will find the templates to be sturdy, safe to use, as well as provide you with perfectly cut fabric pieces every time you use them.