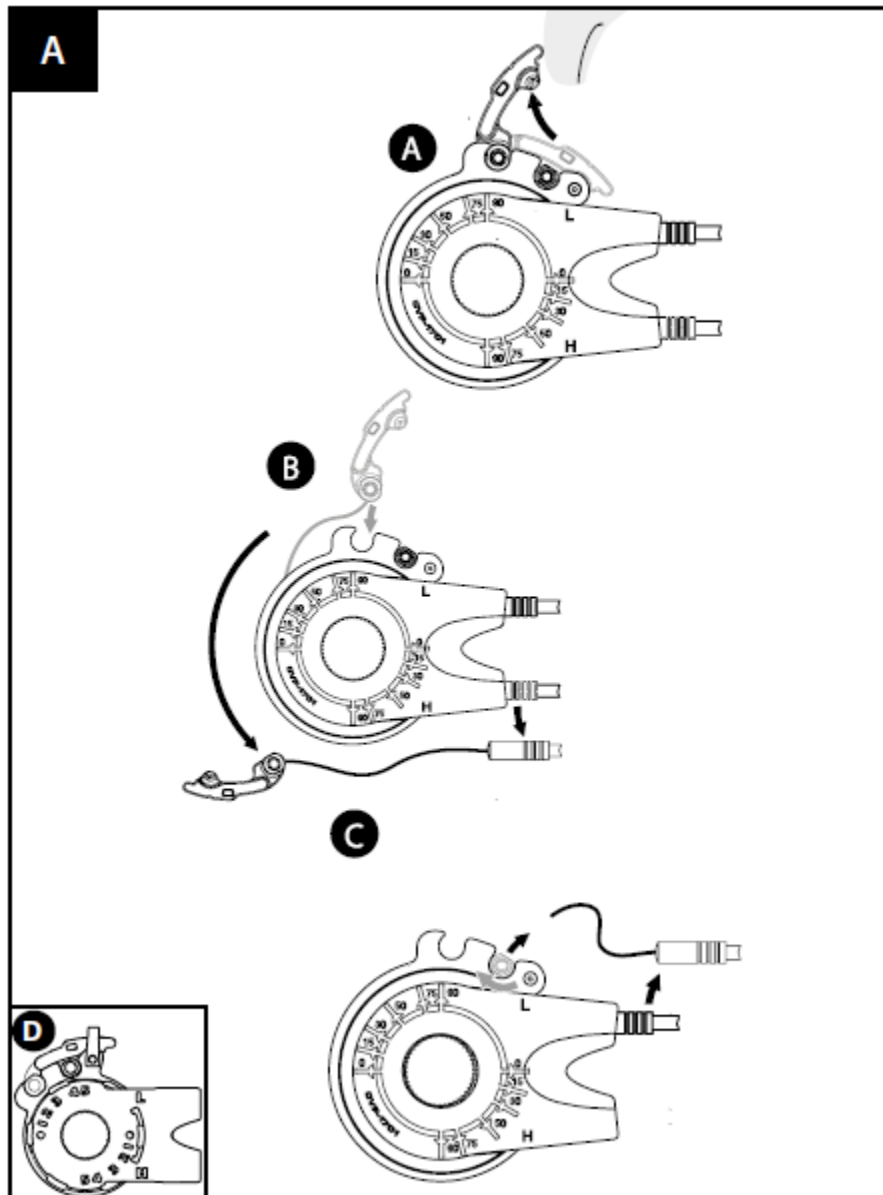




REMOVING AND REINSTALLING YOUR ENVIOLLO SHIFT CABLES

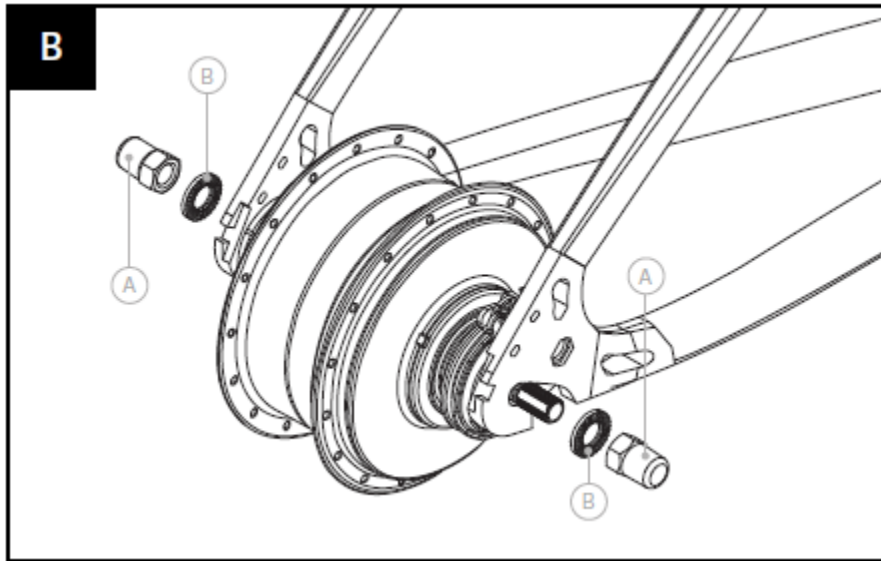
1. Shift to a position that allows easy access to the shift cable hardware.
2. [A] Remove shift cable hardware following steps (A, B and C). Using the one-turn interface (D) carefully lift the snap feature (A) to remove the shift cable hardware.



3a. [B] For the variants enviolo CT/TR/CO



Loosen and/or remove the axle nuts (A), followed by the non-turn washers.



Note that the non-turn washers have a “key” which slots into the horizontal dropout on your Vvolt.

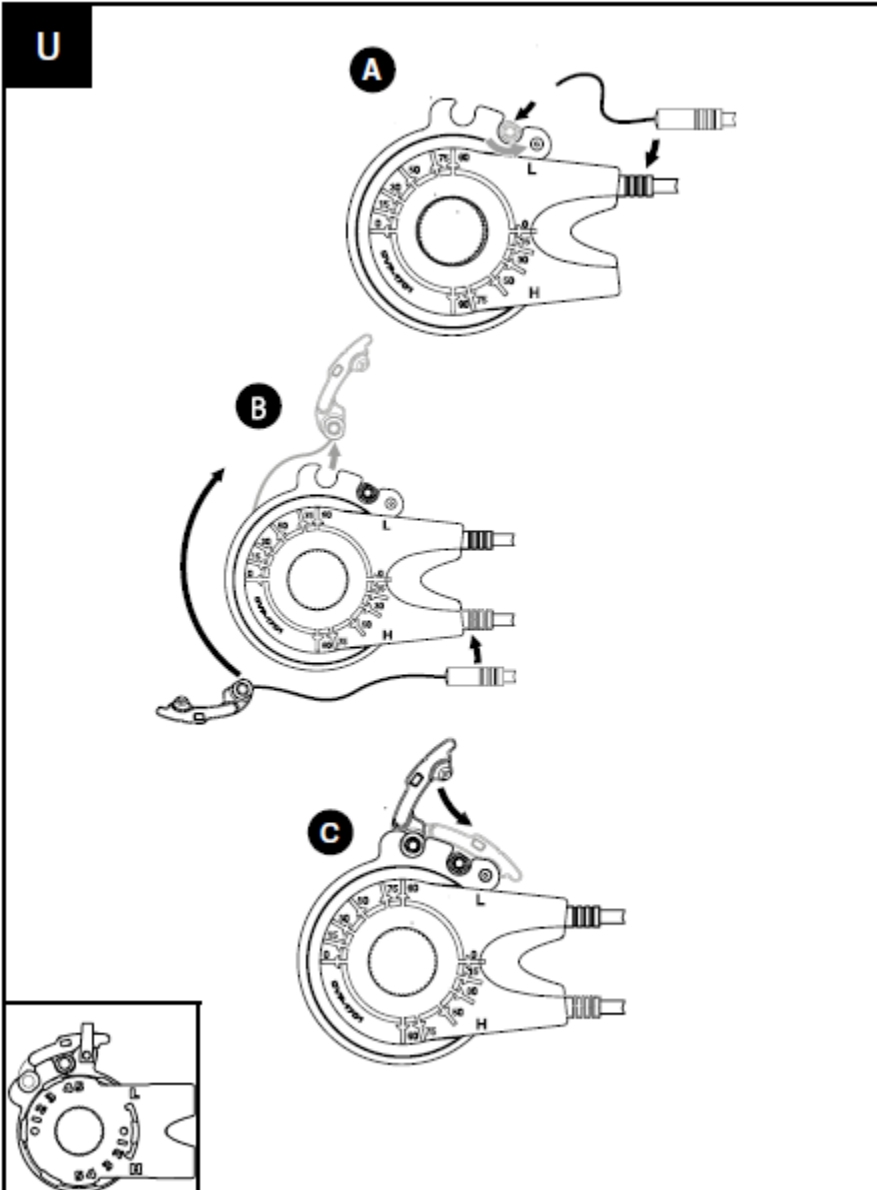
4. Remove the rear wheel.

First remove the belt from the front sprocket for wheel removal.

RE-INSTALLATION OF SHIFT CABLES:

1. Place the rear wheel into the rear frame, making sure not to obstruct shift cables.

2 Align non-turn washers facing forward into the dropout slots on the frame.



Install the Underdrive cable end (small end) into the forward cable end slot on the hub interface, then install the Underdrive cable housing into the top housing stop.

Install the Overdrive cable (large “latch” end”) housing into the lower housing stop, then pull the cable end until the cable housings are seated in the housing stops at the hub end AND at the shifter.

Install the Overdrive cable end (large “latch” end) into the rearward cable end slot, and rotate down/forward until it *clicks* into place.

Twist the shifter to ensure free rotation, and you’re all set!