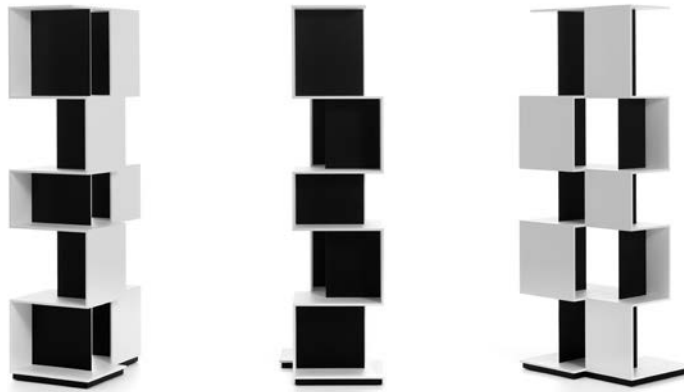


QUBIT

Victor Vasilev
2019



VIDEO



This project is inspired by the complexity of the time we live in. The multiplicity of points of view is often present in many moments of our everyday lives.

I tried to imagine a container that could be useful in both the domestic environment and in working spaces. It can be used as a partition, or it can be set against a wall.

Its geometrical shape makes it a kind of micro-architecture, whose design has been created to compose a sequence, without noticing the repeating of the single modules.

The name is a tribute to the quantum theory and its unit of measure.

Victor Vasilev

Structure and types

A single modular element with parallel installation (W63), with two faces and different heights (66.5, 90.5 and 161.5 cm). This reversibility allows, by setting multiple modules alongside one another, to give continuity or discontinuity to shelves and volumes, to empty and solid spaces, and to create larger compositions.

Elements made of medium density wood fibres, thickness 10 and 6 mm, and 2.5 cm plinth with +/- 1 cm adjustable steel feet and steel counterweight (15 Kg).

The use of a counterweight, in the high and medium versions, allows the installation in the middle of a room or against a wall, with no need for fastening. This peculiarity provides extra value to the Qubit collection, increasing its possibilities of configuration and customisation. It can be changed again and again after purchasing it and offers the final customer greater freedom of expression and possibility to fit into any environment.

Qubit is available in two fix colour options, always creating contrast between the elements. Specifically:

- Micro-groffered matt white lacquered structure, with vertical partitions in black open-pore stained ash.
- Micro-groffered matt lead grey lacquered structure, with gold lacquered vertical partitions.

FRAME FINISH

WHITE

F008 = matt lacquered white X042

BLACK

F076 = matt lacquered lead grey

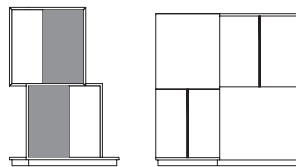
PARTITION FINISH

F055 = black ash X083

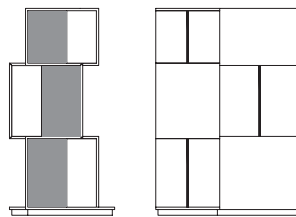
F104 = gold lacquered

ABACUS

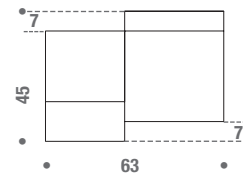
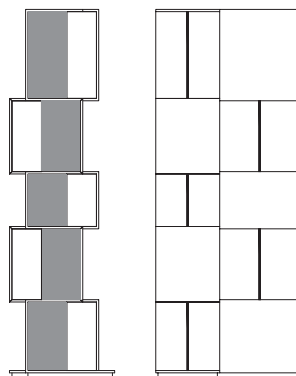
LOW UNIT L63 D46 H66.5



MEDIUM UNIT L63 D46 H90.5



HIGH UNIT L63 D46 H161.5



INTERNAL DIMENSIONS

