

mdf italia



© COPYRIGHT 2023 MDF ITALIA SRL SOCIETA' UNIPERSONALE

2023

ROCK TABLE MAXI

Designed by Jean Marie Massaud

Rock Table is a family of indoor and outdoor tables with an elegant, fluid silhouette, characterised by a solid central conical base and a thin top that appears to float. The new model features a top with an unusual and interesting shape: a rectangle with rounded corners with a physiognomy that fosters a direct relationship among those sitting around the table, facilitating interaction and dialogue.

A style that combines radicality and sensuality, softness and boldness, and complements modern outdoor home environments as well as rooftop or dehor area of offices or hotels, where it leaves its own unique, bold mark.

[DISCOVER THE INDOOR VERSION](#)

DIMENSIONS

This table is available in two different sizes:

- . L210 D105 H73
- . L240 D115 H73

TABLETOP

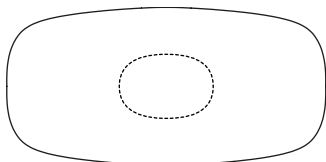
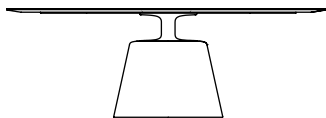
. CEMENT. In white or anthracite UHPFRC cement (ultra high performance, fibre reinforced cement), with high technical / structural characteristics. Tops: 80, 100, 120, 140, 250 e 300 cm.

. STONE CHIP CEMENT. In UHPFRC (ultra high performance, fibre reinforced cement), with high technical / structural characteristics, coloured in mass using natural oxides, enhanced with a stone chip surface made up of Alpine rocks and stones (white and green stone chip top), or stone chip made up of stones from Tuscany (terracotta top). Tops: 80, 100, 120, 140, 250 e 300 cm.

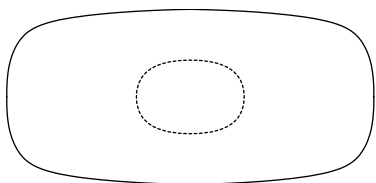
MONOCHROME COMBINATIONS

- . WHITE VERSION. Base in natural cement, matt white tube and flange, white cement or white stone chip cement top.
- . ANTHRACITE VERSION. Base in anthracite cement, matt anthracite tube and flange and anthracite cement top.
- . ORANGE VERSION. Base in terracotta cement, matt orange tube and flange, terracotta stone chip cement top.
- . GREEN VERSION. Base in green cement, matt green tube and flange, green stone chip cement top.

ROCK TABLE NEW



TOP L210 D105 H73
BASE L72 D49 H51



TOP L240 D115 H73
BASE L72 D49 H51

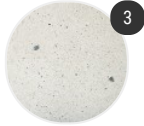
Finishing

The number in the dot corresponds to the number of colour/material finish.

Here below, in the section FINISH OPTIONS, please note all the colours of the materials used for this product.

TABLE

Top



Stone chip cement



Cement

Structure

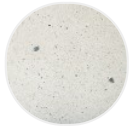


Cement

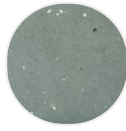
Finish options

TOP

Stone chip cement



White stone
chip cement



Green stone
chip cement

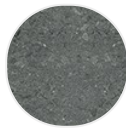


Terracotta
stone chip
cement

Cement



White cement



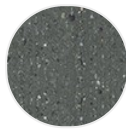
Anthracite
cement

STRUCTURE

Cement



Cement
natural X080



Cement
anthracite
X081



Cement green



Cement
terracotta