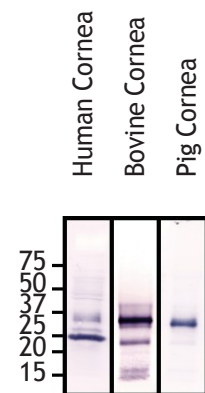


Monoclonal Antibody to Keratocan

Catalog Number 1042008

For research use only

INTRODUCTION	Keratocan belongs to the Small Leucine Rich Proteoglycan (SLRP) family. It was originally found to be a cornea specific keratan sulphate proteoglycan that, along with Lumican, plays a role in the development and maintenance of corneal transparency. Mutations of keratocan cause cornea plana in humans, which is often associated with glaucoma, whereas the absence of Lumican leads to formation of cloudy corneas. This suggests that Keratocan and Lumican have different roles in regulating the formation of stromal extracellular matrix.
CLONE	Ker-1
HOST	Mouse
ISOTYPE	IgM
PURITY	Affinity purified on thiophilic column
STORAGE BUFFER	PBS, no preservatives
FORM	Liquid
CONCENTRATION	Please see vial label for concentration.
STORAGE	Store at -20°C. Avoid freeze/thaw cycles.
EXPIRATION	See vial Label
SPECIFICITY	This Keratocan antibody recognises a protein core epitope in human, bovine, porcine, mouse & chicken tissues.



Species Reactivity with Ker-1. Samples are treated with Keratanase and Keratanase II prior to electrophoresis.

International
 MD Bioproducts GmbH
 Tel: +41- 44 986 2628
 info@mdbioproducts.com



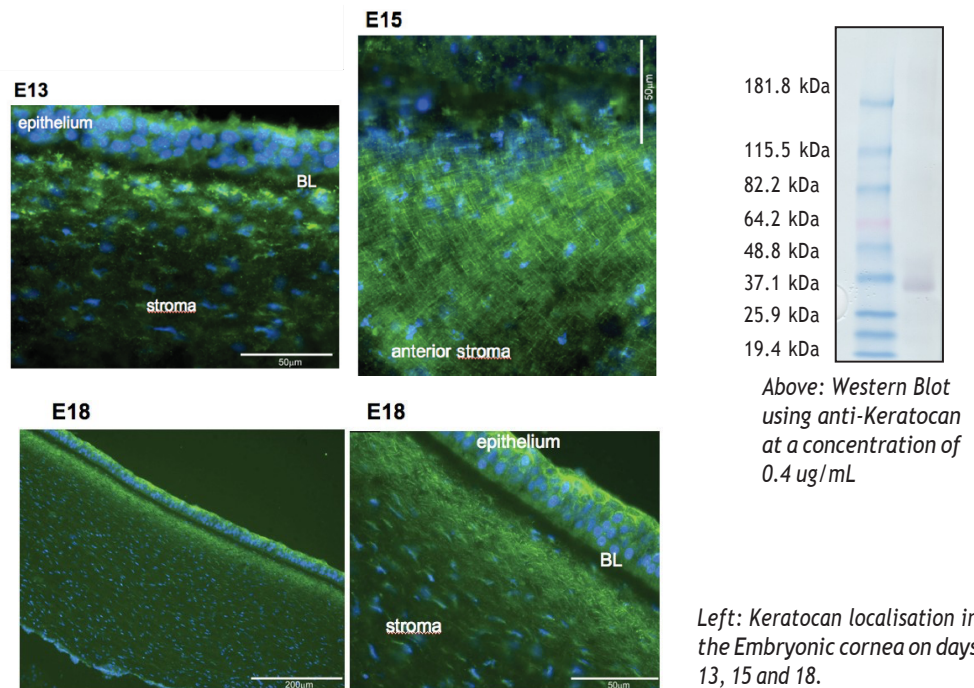
www.mdbioproducts.com

North America
 MD Biosciences Bioproducts, LLC
 Tel: 651-789-6535
 products@mdbiosciences.com

APPLICATION

- ELISA
- Western Blot: recommended dilution 0.4 µg/mL
- IHC

Note: This epitope is best recognized after keratanase and keratanase II treatment/digestion of section (IHC) or tissue extracts (for Western analyses). In some IHC tissue analyses, chondroitinase treatment may also be used as this second enzyme treatment facilitates antibody penetration into the tissue.



REFERENCES

1. *Immunolocalisation and expression of keratocan in tendon.* Rees SG, Waggett AD, Kerr BC, Probert J, Gealy EC, Dent CM, Caterson B, Hughes CE. (2008) **Osteoarthritis Cartilage.**
2. *Fragmentation of decorin, biglycan, lumican and keratocan is elevated in degenerate human meniscus, knee and hip articular cartilages compared with age-matched macroscopically normal and control tissues.* Melrose J, Fuller ES, Roughley PJ, Smith MM, Kerr B, Hughes CE, Caterson B, Little CB. (2008) **Arthritis Res Ther.** 10(4):R79.
3. *Differential expression of the keratan sulphate proteoglycan, keratocan, during chick corneal embryogenesis.* Gealy EC, Kerr BC, Young RD, Tudor D, Hayes AJ, Hughes CE, Caterson B, Quantock AJ, Ralphs JR. (2007) **Histochem Cell Biol.** Dec;128(6):551-5.

International
MD Bioproducts GmbH
Tel: +41- 44 986 2628
info@mdbioproducts.com

 
www.mdbioproducts.com

North America
MD Biosciences Bioproducts, LLC
Tel: 651-789-6535
products@mdbiosciences.com