



Making surgical excellence
universally accessible

Spine Series

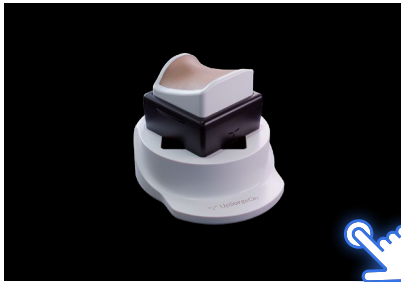
Surgical Training Technologies
for Spine Surgery



Interactive Brochure 2024

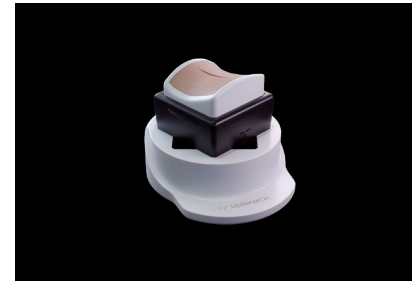
Life-like as never before!

The modularity and compactness of this series enable advanced cadaver-free training in any setting, with optimized costs.



Anterior CervicalBox 3

Multilevel Spondylotic Myelopathy and Radiculopathy | **C3 - C7**



Posterior CervicalBox 5

Multilevel Posterior Cervical Compression | **C2 - C6**



Posterior LumbarBox 7

Posterior Approaches to the Lumbar Spine | **L1 - S1**



ThoracolumbarBox 9

Posterior Approaches to the Thoracolumbar Spine | **T8 - S1**



Anterior-Lateral LumbarBox 11

Anterior, oblique and lateral approaches to the Lumbar Spine **L2 - S1**









Endoscopic LumbarBox 12

Endoscopic Approaches to the Lumbar Spine | **L1 - S1**



Anterior Cervical Box

Multilevel Spondylotic Myelopathy
and Radiculopathy | C3-C7

-  Pulsating Carotid Artery
-  Disposable Parts
-  Hyperrealism
-  Standard X-Ray and CT Scan
-  Augmented Reality App
-  Mobile X-Ray



What you can do

Skin incision

Layer by layer soft tissue dissection

Platysma incision

Detection of carotid artery

Multilevel decompressions for
spondylotic myelopathy

Multiple discectomies and corpectomies

Any kind of anterior cervical spine
fixation

Fluoroscopy and CT scans

Pulsating Carotid Artery

Dissect, palpate, and observe a life-like pulsating carotid artery containing blood, being careful not to damage it.



[Click here to download the Datasheets](#)

Augmented Reality App

Get the Neurosurgery App to explore cases, navigate 3D models, and utilize Augmented Reality on the Box to strategize your procedure.



Standard Imaging

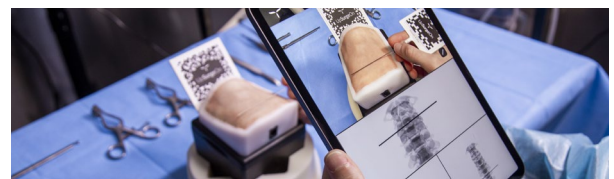
Scan the box with X-Ray and CT to verify the level and visualize the positioning of the fixation implants.

Mobile X-Ray

For the first time, surgical fluoroscopy is accessible through a user-friendly App*, marking a groundbreaking shift in training and courses.

[Download the App](#)

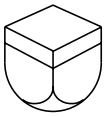
Use of the tools integrated with the simulator.



*Attention: Mobile X-Ray module works on Apple Devices only.

Disposable Levels available

Designed to specifically mimic the properties of human tissues, such as softness, elasticity, and texture.



Box
Reusable

+



Spine Level
Disposable

+



Skin Level
Disposable



Composition of Anterior Cervical Box

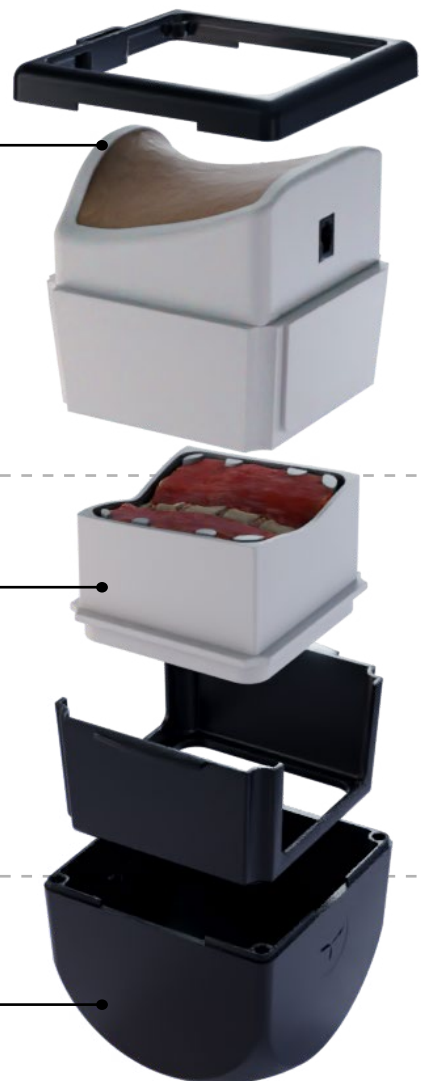
Skin Level | Disposable

Bleeding skin and subcutaneous tissue
Platysma
Connective tissues
Sternocleidomastoid muscle
Trachea and esophagus (medial mass)
Pulsating Carotid Artery

Spine Level | Disposable






Prevertebral fascia
Paravertebral muscles
Vertebral bodies and discs from C3 to C7
Spinal cord
Peridural fat

Box | Reusable



Posterior Cervical Box

Multilevel Posterior Cervical Compression | C2-C6

-  Disposable Parts
-  Hyperrealism
-  Mobile X-Ray
-  Standard X-Ray and CT Scan
-  Standard Navigation



What you can do

Multilevel decompressions for spondylotic myelopathy

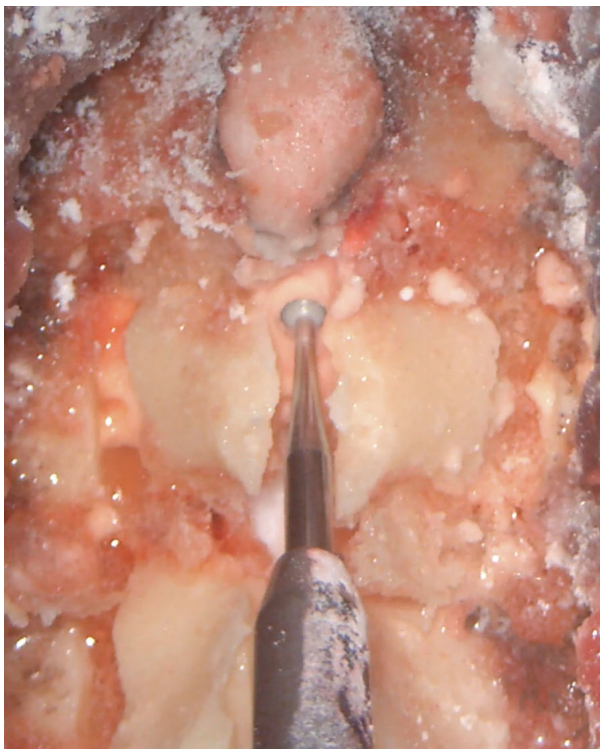
Laminectomies

Flavectomies

Laminoplasty

Any kind of posterior cervical spine fixation

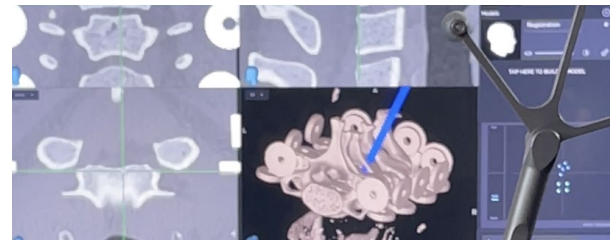
Fluoroscopy and CT scans



[Click here to download the Datasheets](#)

Navigation*

Upload the CT scan on the navigator and start navigating the Box.



*Contact us at support@upsurgeon.com to check the compatibility of your Navigation technology.

Standard Imaging

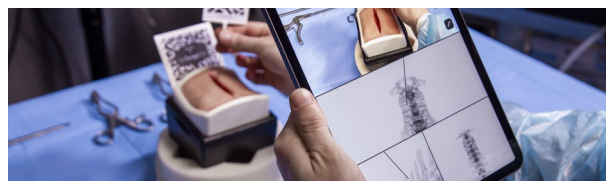
Scan the box with X-Ray and CT to verify the level and visualize the positioning of the fixation implants.

Mobile X-Ray

For the first time, surgical fluoroscopy is accessible through a user-friendly App*, marking a groundbreaking shift in training and courses.

[Download the App](#)

Use of the tools integrated with the simulator.

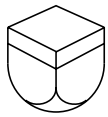


*Attention: Mobile X-Ray module works on Apple Devices only.



Disposable Levels available

Designed to specifically mimic the properties of human tissues, such as softness, elasticity, and texture.



Box
Reusable

+

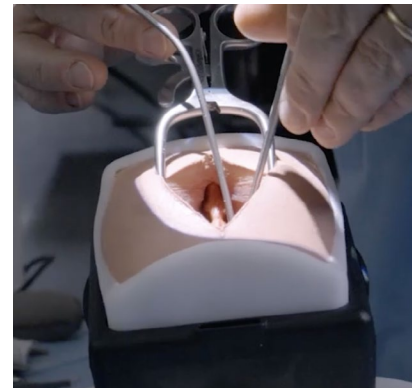


Spine Level
Disposable

+



Skin Level
Reusable



Composition of Posterior CervicalBox

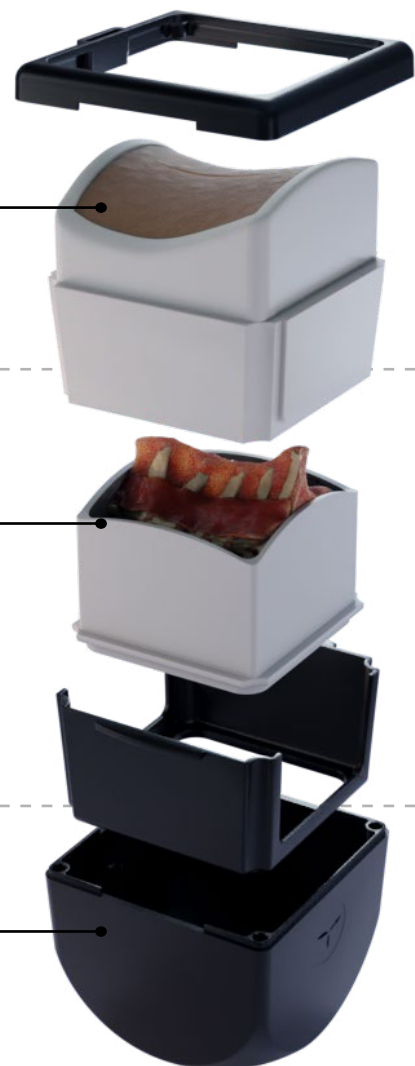
Skin Level | *Reusable*

Dissected Skin and subcutaneous tissue
Dissected paravertebral muscles

Spine Level | *Disposable*

Ligaments
Vertebrae from C2 to C6
Spinal cord
Peridural fat
Vertebral arteries

Box | *Reusable*



Posterior LumbarBox

5 Operable Levels | L1-S1

- 3 Paramedian Herniations
- 2 Foraminal Herniations
- 2 Extraforaminal Herniations
- 1 Central Herniation
- 1 Canal Stenosis



Disposable Parts



Hyperrealism



Mobile X-Ray



Standard X-Ray and CT Scan



Standard Navigation



What you can do

Laminectomies

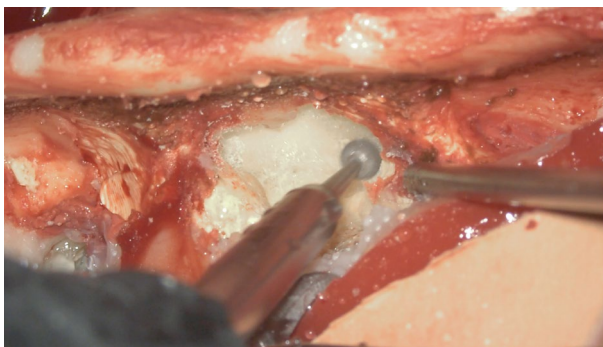
Flavectomies

Discectomies

Corpectomies

Any kind of posterior lumbar spine fixation

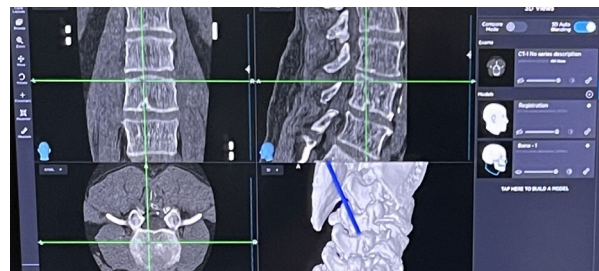
Fluoroscopy and CT scans



[Click here to download the Datasheets](#)

Navigation*

Upload the CT scan on the navigator and start navigating the Box.



*Contact us to check the compatibility of your Navigation technology.

Standard Imaging

Scan the box with X-Ray and CT to verify the level and visualize the positioning of the fixation implants.

Mobile X-Ray

For the first time, surgical fluoroscopy is accessible through a user-friendly App*, marking a groundbreaking shift in training and courses.

[Download the App](#)

Use of the tools integrated with the simulator.

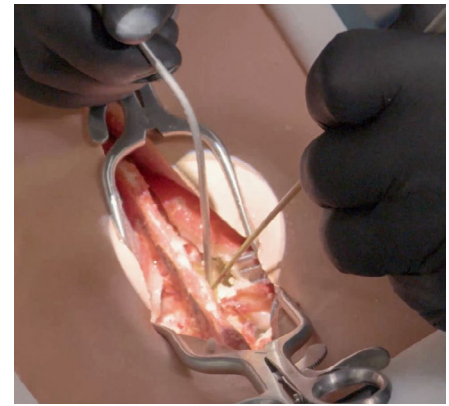


*Attention: Mobile X-Ray module works on Apple Devices only.



Disposable Levels available

Designed to specifically mimic the properties of human tissues, such as softness, elasticity, and texture.



Open and Minimally Invasive Skin Level



Composition of Posterior LumbarBox

Skin Level | *Reusable*

Dissected Skin and subcutaneous tissue (Open & MIS Skin)
Dissected paravertebral muscles



Spine Level | *Disposable*

L1-2 Left | Paramedian Herniation
L1-2 Right | Extraforaminal Herniation
L2-3 | Central Herniation
L3-4 Left | Foraminal Herniation
L3-4 Right | Paramedian Herniation
L4-5 Right | Extraforaminal Herniation
L4-5 | Canal Stenosis
L5-S1 Left | Foraminal Herniation
L5-S1 Right | Paramedian Herniation








Base | *Reusable*



NEW

ThoracolumbarBox

10 operable levels | T8-S1

-  Disposable Parts
-  Hyperrealistic
-  Mobile X-Ray
-  Standard X-Ray and CT Scan
-  Standard Navigation



What you can do

Posterior decompression and fixation of the lower thoracic and lumbosacral segments

PLIF (Posterior Lumbar Interbody Fusion)

TLIF (Transforaminal Lateral Interbody Fusion)

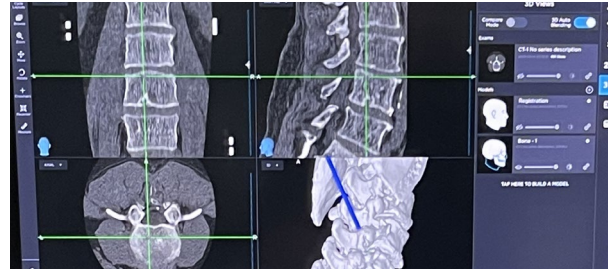
Open and MIS Approaches (using open Reusable Skin Level and MIS Disposable Skin Level, respectively)



[Click here to download the Datasheets](#)

Navigation*

Upload the CT scan on the navigator and start navigating the Box.



*Contact us at support@upsurgeon.com to check the compatibility of your Navigation technology.

Standard Imaging

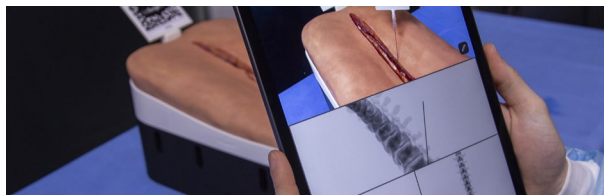
Scan the box with X-Ray and CT to verify the level and visualize the positioning of the fixation implants.

Mobile X-Ray

For the first time, surgical fluoroscopy is accessible through a user-friendly App*, marking a groundbreaking shift in training and courses.

[Download the App](#)

Use of the tools integrated with the simulator.

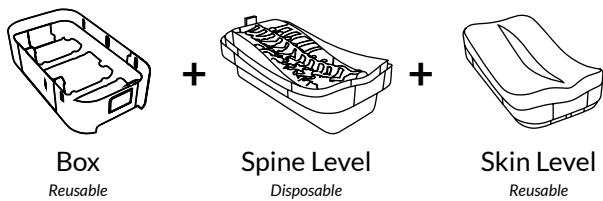


*Attention: Mobile X-Ray module works on Apple Devices only.

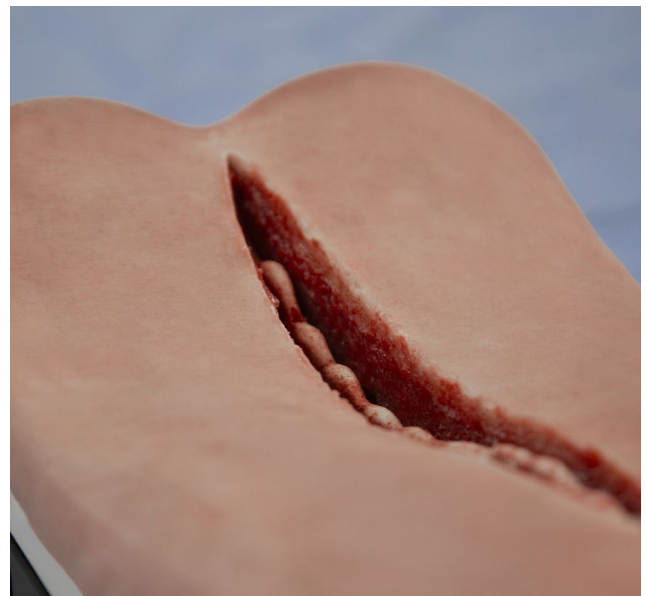


Disposable Levels available

Designed to specifically mimic the properties of human tissues, such as softness, elasticity, and texture.



Open and Minimally Invasive Skin Level



Composition of Thoracolumbar Box

Skin Level | *Reusable/Disposable*

Reusable: Open Skin (Dissected Skin and subcutaneous tissue)
Disposable: Closed Skin - MIS (Minimally invasive surgery)



Spine Level | *Disposable*

Vertebrae from T8 to S1 Ligaments
Cauda equina and lumbar nerve roots Peridural fat
Lumbar discs with herniations



Base | *Reusable*



NEW

Anterior-Lateral Lumbar Box

Multilevel Discopathy | L2-S1

↕↔ Dual Surgical Position

📄 Standard X-Ray and CT Scan

📱 Mobile X-Ray



The simulator is designed to simulate both supine and lateral positions, facilitating the simulation of all oblique and lateral anterior approaches to the lumbosacral spine.

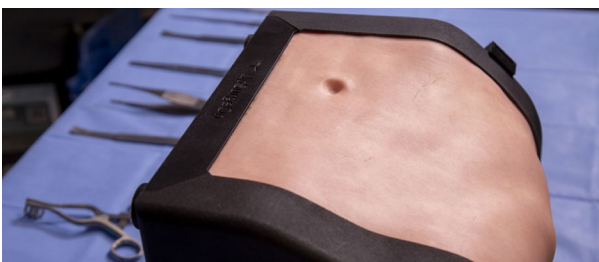
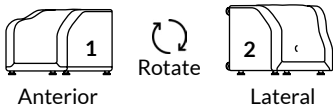
What you can do

ALIF (Anterior Lumbar Interbody Fusion)

OLIF (Oblique Lumbar Interbody Fusion)

XLIF (Extreme Lumbar Interbody Fusion, aka LLIF, Lateral Lumbar Interbody Fusion)

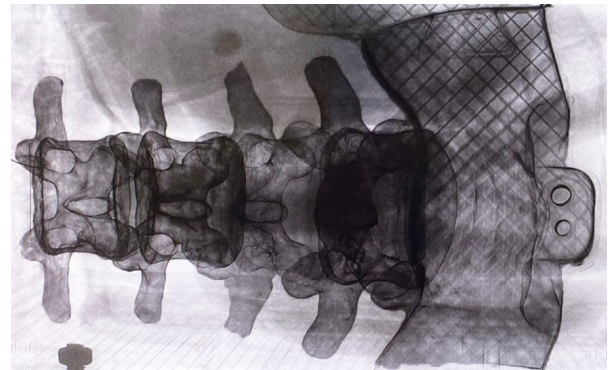
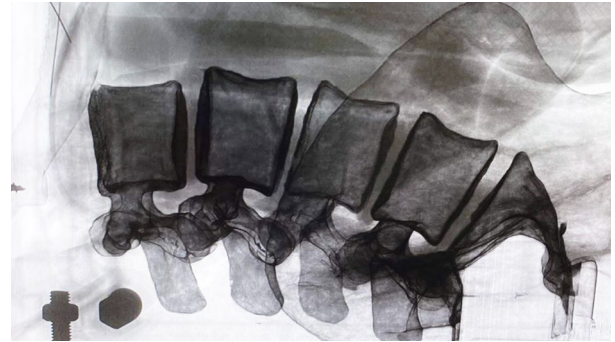
Dual Surgical Position



[Click here to download the Datasheets](#)

Standard Imaging

Scan the box with X-Ray and CT to verify the level and visualize the positioning of the fixation implants.



Mobile X-Ray

For the first time, surgical fluoroscopy is accessible through a user-friendly App*, marking a groundbreaking shift in training and courses.

[Download the App](#)

Use of the tools integrated with the simulator.

*Attention: Mobile X-Ray module works on Apple Devices only.







NEW

Endoscopic Lumbar Box

10 Operable Levels | L1-S1 Left/Right

- 3 Paramedian Herniations
- 2 Foraminal Herniations
- 2 Extraforaminal Herniations
- 1 Central Herniation
- 1 Canal Stenosis

-  Disposable Parts
-  Hyperrealistic
-  Smart Water Management
-  Mobile X-Ray
-  Standard X-Ray and CT Scan*



What you can do

PELD (Percutaneous Endoscopic Lumbar Discectomy)
 TELD (Transforaminal Endoscopic Lumbar Discectomy)
 Monoportal and biportal procedures



Smart Water Management

The simulator is equipped with an internal water drainage and outflow system, facilitating the management of high endoscopic flows anywhere and preventing any leakage during surgical procedures.



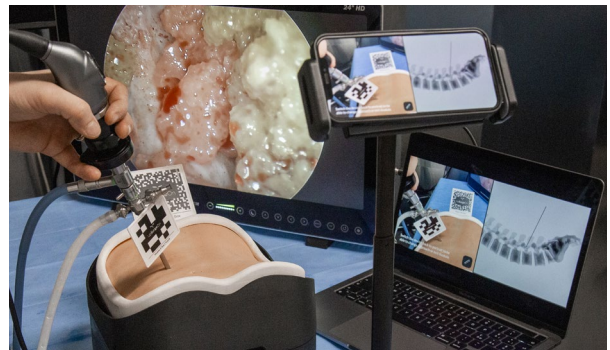
[Click here to download the Datasheets](#)

Mobile X-Ray

For the first time, surgical fluoroscopy is accessible through a user-friendly App*, marking a groundbreaking shift in training and courses.

[Download the App](#)

Use of the tools integrated with the simulator.

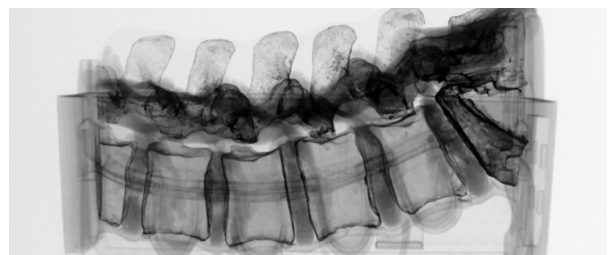


*Attention: Mobile X-Ray module works on Apple Devices only.

Standard Imaging*

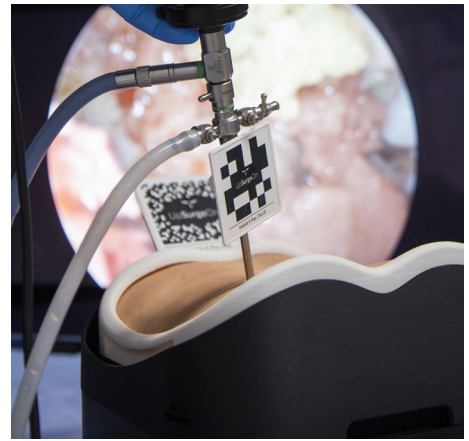
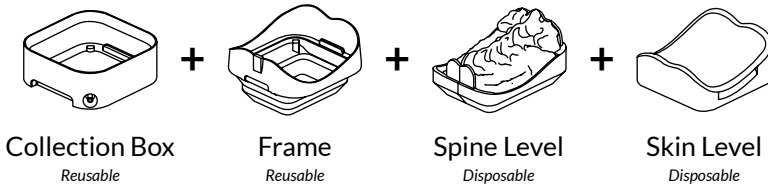
Scan the box with X-Ray and CT to verify the level and visualize the positioning of the fixation implants.

*Feature available upon request.



Disposable Levels available

Designed to specifically mimic the properties of human tissues, such as softness, elasticity, and texture.



Composition of Endoscopic Lumbar Box

Skin Level | *Disposable*

The most durable Skin ever
Reusable multiple times



Spine Level | *Disposable*

L1-2 Left | Paramedian Herniation
L1-2 Right | Extraforaminal Herniation
L2-3 | Central Herniation
L3-4 Left | Foraminal Herniation
L3-4 Right | Paramedian Herniation
L4-5 Right | Extraforaminal Herniation
L4-5 | Canal Stenosis
L5-S1 Left | Foraminal Herniation
L5-S1 Right | Paramedian Herniation



Frame | *Reusable*

The frame with the drainage grid for the
Water Management System



Collection Base | *Reusable*

Water collection base



Contact

For direct purchase or if you need assistance in setting up your Lab or organizing a course, feel free to contact us for a tailored quotation. **Click here to submit a request**



Get in touch



This button sends an email to commercial@upsurgeon.com

EUROPE

UpSurgeOn S.r.l.
Via Cascina Venina 7,
20057 Assago (MI), Italy

USA

UpSurgeOn Inc.
Corporation Trust Center,
1209 Orange Street
Wilmington, DE 19801, USA

Follow us

UpSurgeOn is a hi-tech company specialized in psychomotor skill augmentation in microsurgeries through the use of bleeding-edge virtual and physical simulation technologies.



Go to website
www.upsurgeon.com

