



Making surgical excellence
universally accessible

Spine Series

Surgical Training Technologies
for Spine Surgery



Interactive Brochure 2024

Life-like as never before!

The modularity and compactness of this series enable advanced cadaver-free training in any setting, with optimized costs.



Tap here

Anterior CervicalBox 3

Multilevel Spondylotic Myelopathy and Radiculopathy | C3 - C7



Posterior CervicalBox 5

Multilevel Posterior Cervical Compression | C2 - C6



Posterior LumbarBox 7

Posterior Approaches to the Lumbar Spine | L1 - S1



ThoracolumbarBox 9

Posterior Approaches to the Thoracolumbar Spine | T8 - S1



Anterior-Lateral LumbarBox 11

Anterior, oblique and lateral approaches to the Lumbar Spine L2 - S1






Endoscopic LumbarBox 12

Endoscopic Approaches to the Lumbar Spine | L1 - S1



Anterior Cervical Box

Multilevel Spondylotic Myelopathy
and Radiculopathy | C3-C7

-  Pulsating Carotid Artery
-  Standard X-Ray and CT Scan
-  Augmented Reality App
-  Mobile X-Ray
-  Disposable Parts



What you can do

Skin incision

Layer by layer soft tissue dissection

Platysma incision

Detection of carotid artery

Multilevel decompressions for
spondylotic myelopathy

Multiple discectomies and corpectomies

Any kind of anterior cervical spine
fixation

Fluoroscopy and CT scans

Pulsating Carotid Artery

Dissect, palpate, and observe a life-like pulsating carotid artery containing blood, being careful not to damage it.



[Click here to download the Datasheets](#)

Augmented Reality App

Get the Neurosurgery App to explore cases, navigate 3D models, and utilize Augmented Reality on the Box to strategize your procedure.



Standard Imaging

Scan the box with X-Ray and CT to verify the level and visualize the positioning of the fixation implants.

Mobile X-Ray

For the first time, surgical fluoroscopy is accessible through a user-friendly app, marking a groundbreaking shift in training and courses.

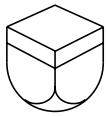
[Download the App](#)

Use of the tools integrated with the simulator.



Disposable Levels available

Designed to specifically mimic the properties of human tissues, such as softness, elasticity, and texture.



Box
Reusable

+



Vertebral Level
Disposable

+



Skin Level
Disposable



Composition of Anterior Cervical Box

Skin Level | Disposable

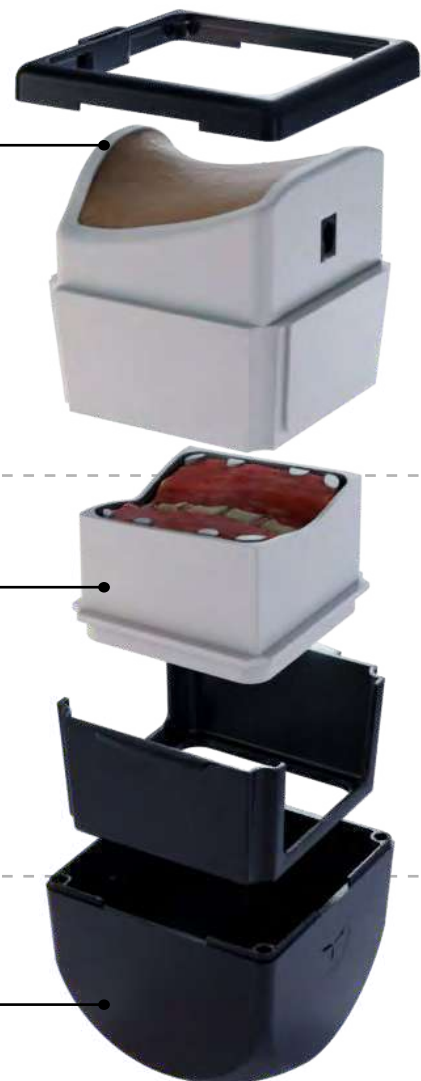
Bleeding skin and subcutaneous tissue
Platysma
Connective tissues
Sternocleidomastoid muscle
Trachea and esophagus (medial mass)
Pulsating Carotid Artery

Vertebral Level | Disposable

Prevertebral fascia
Paravertebral muscles
Vertebral bodies and discs from C3 to C7
Spinal cord
Peridural fat

Box | Reusable

Universal drip-saver container



Posterior Cervical Box

Multilevel Posterior Cervical Compression | C2-C6



Navigation Compatible



Standard X-Ray and CT Scan



Mobile X-Ray



Disposable Parts



What you can do

Multilevel decompressions for spondylotic myelopathy

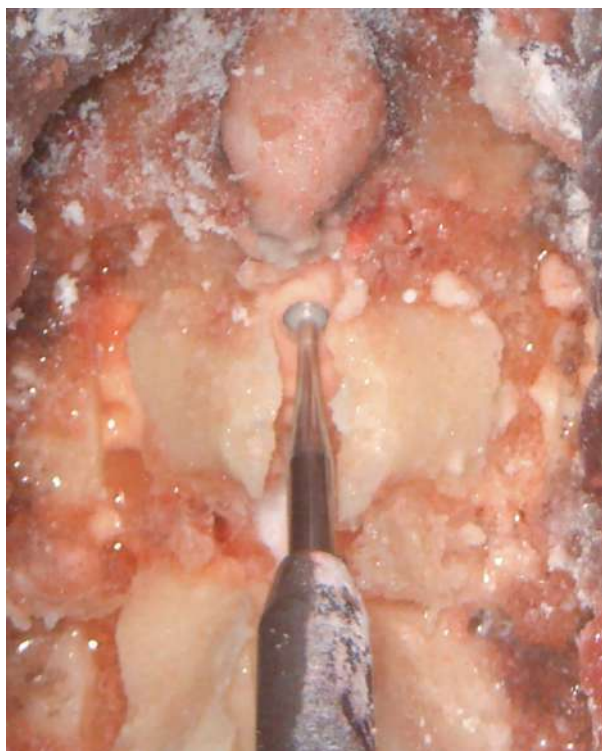
Laminectomies

Flavectomies

Laminoplasty

Any kind of posterior cervical spine fixation

Fluoroscopy and CT scans



[Click here to download the Datasheets](#)

Navigation*

Upload the CT scan on the navigator and start navigating the Box.



*Contact us at support@upsurgeon.com to check the compatibility of your Navigation technology.

Standard Imaging

Scan the box with X-Ray and CT to verify the level and visualize the positioning of the fixation implants.

Mobile X-Ray

For the first time, surgical fluoroscopy is accessible through a user-friendly app, marking a groundbreaking shift in training and courses.

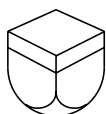
[Download the App](#)

Use of the tools integrated with the simulator.



Disposable Levels available

Designed to specifically mimic the properties of human tissues, such as softness, elasticity, and texture.



Box
Reusable

+



Vertebral Level
Disposable

+



Skin Level
Reusable



Composition of Posterior Cervical Box

Skin Level | *Reusable*

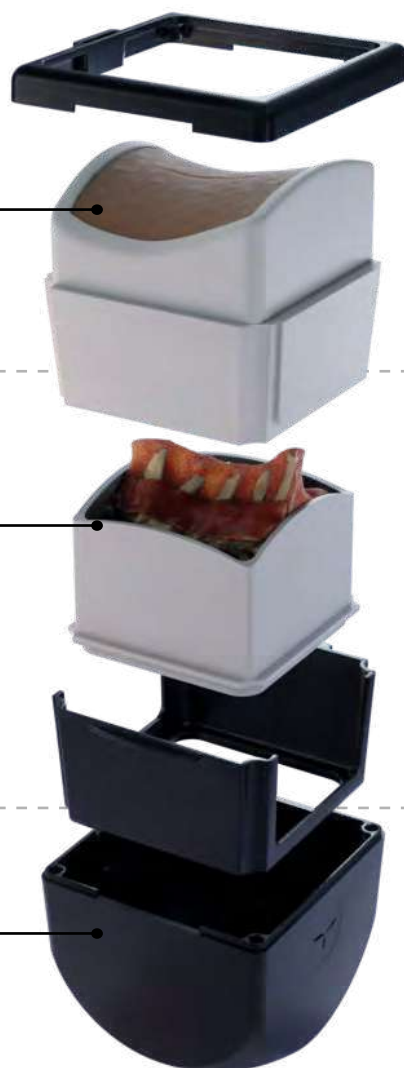
Dissected Skin and subcutaneous tissue
Dissected paravertebral muscles

Vertebral Level | *Disposable*

Ligaments
Vertebrae from C2 to C6
Spinal cord
Peridural fat
Vertebral arteries

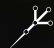



Box | *Reusable*

Universal drip-saver container



Posterior Lumbar Box

Multilevel Lumbar Stenosis, Discopathy and Discarthrosis | L1-S1

-  Navigation Compatible
-  Standard X-Ray and CT Scan
-  Mobile X-Ray
-  Disposable Parts



What you can do

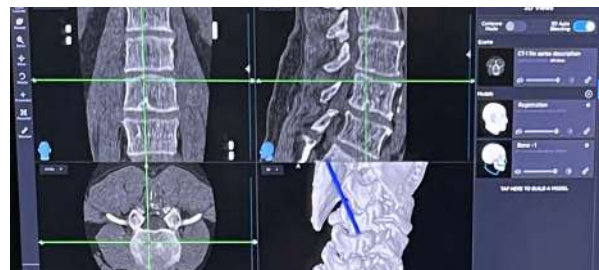
- Laminectomies
- Flavectomies
- Discectomies
- Corpectomies
- Any kind of posterior lumbar spine fixation
- Fluoroscopy and CT scans



[Click here to download the Datasheets](#)

Navigation*

Upload the CT scan on the navigator and start navigating the Box.



*Contact us at support@upsurgeon.com to check the compatibility of your Navigation technology.

Standard Imaging

Scan the box with X-Ray and CT to verify the level and visualize the positioning of the fixation implants.

Mobile X-Ray

For the first time, surgical fluoroscopy is accessible through a user-friendly app, marking a groundbreaking shift in training and courses.

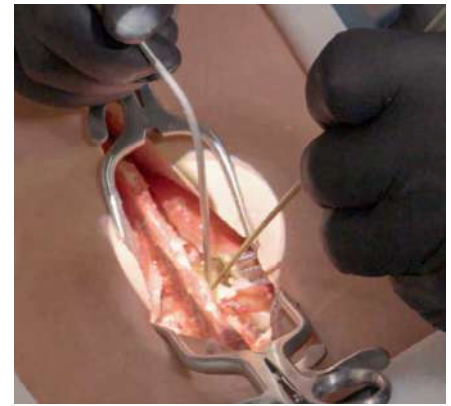
[Download the App](#)

Use of the tools integrated with the simulator.



Disposable Levels available

Designed to specifically mimic the properties of human tissues, such as softness, elasticity, and texture.



Open and Minimally Invasive Skin Level



Composition of Posterior LumbarBox

Skin Level | *Reusable*

Dissected Skin and subcutaneous tissue (Open & MIS Skin)
Dissected paravertebral muscles



Vertebral Level | *Disposable*

Vertebrae from L1 to S1 Ligaments
Cauda equina and lumbar nerve roots
Peridural fat
Lumbar discs with herniations



Box | *Reusable*





Universal drip-saver container



Pre-Order

Thoracolumbar Box

Multilevel Lumbar Stenosis, Discopathy and Discarthrosis | T8-S1

-  Navigation Compatible
-  Standard X-Ray and CT Scan
-  Mobile X-Ray
-  Disposable Parts



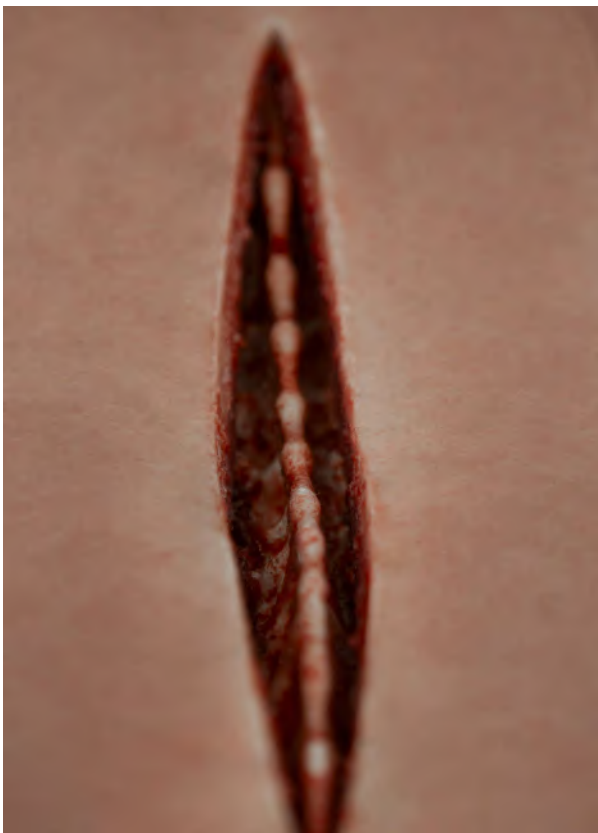
What you can do

Posterior decompression and fixation of the lower thoracic segments

PLIF (Posterior Lumbar Interbody Fusion)

TLIF (Transforaminal Lateral Interbody Fusion)

Open and percutaneous approaches (open reusable Skin Level and closed disposable Skin Level respectively)



[Click here to download the Datasheets](#)

Navigation*

Upload the CT scan on the navigator and start navigating the Box.



*Contact us at support@upsurgeon.com to check the compatibility of your Navigation technology.

Standard Imaging

Scan the box with X-Ray and CT to verify the level and visualize the positioning of the fixation implants.

Mobile X-Ray

For the first time, surgical fluoroscopy is accessible through a user-friendly app, marking a groundbreaking shift in training and courses.

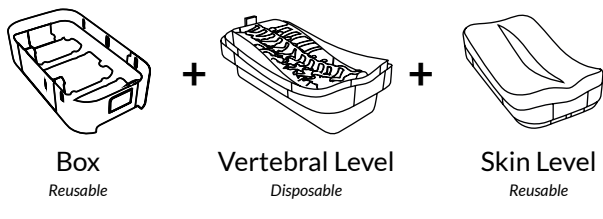
[Download the App](#)

Use of the tools integrated with the simulator.



Disposable Levels available

Designed to specifically mimic the properties of human tissues, such as softness, elasticity, and texture.



Open and Minimally Invasive Skin Level



Composition of Thoracolumbar Box

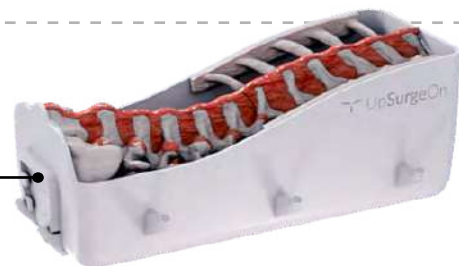
Skin Level | *Reusable*

Dissected Skin and subcutaneous tissue (Open & MIS Skin)
Dissected paravertebral muscles



Vertebral Level | *Disposable*

Vertebrae from T8 to S1 Ligaments
Cauda equina and lumbar nerve roots
Peridural fat
Lumbar discs with herniations



Box | *Reusable*

Universal drip-saver container



Pre-Order

Anterior-Lateral Lumbar Box

Multilevel Discopathy | L2-S1

↕↔ Dual Surgical Position

📷 Standard X-Ray and CT Scan

📱 Mobile X-Ray



The simulator is designed to simulate both supine and lateral positions, facilitating the simulation of all oblique and lateral anterior approaches to the lumbosacral spine.

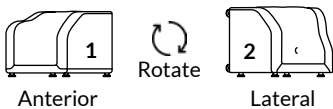
What you can do

ALIF (Anterior Lumbar Interbody Fusion)

OLIF (Oblique Lumbar Interbody Fusion)

XLIF (Extreme Lumbar Interbody Fusion, AKA LLIF, Lateral Lumbar Interbody Fusion)

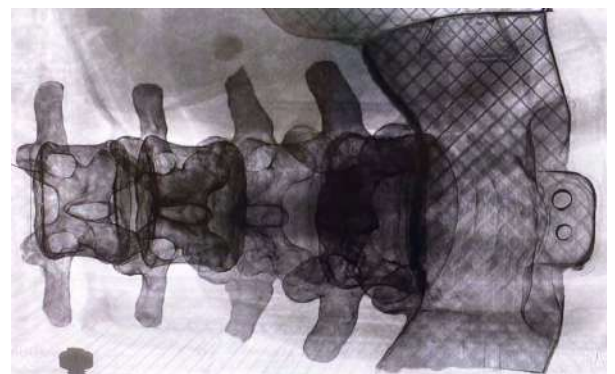
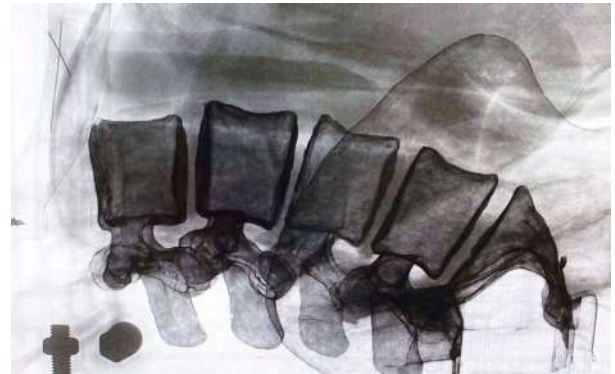
Dual Surgical Position



[Click here to download the Datasheets](#)

Standard Imaging

Scan the box with X-Ray and CT to verify the level and visualize the positioning of the fixation implants.



Mobile X-Ray

For the first time, surgical fluoroscopy is accessible through a user-friendly app, marking a groundbreaking shift in training and courses.

[Download the App](#)





Use of the tools integrated with the simulator.



Pre-Order

Endoscopic Lumbar Box

Multilevel Lumbar Stenosis, Discopathy
and Discarthrosis | L1-S1

-  Smart Water System
-  Standard X-Ray and CT Scan
-  Mobile X-Ray
-  Disposable Parts



What you can do

PELD
(Percutaneous Endoscopic Lumbar Discectomy)

TELD
(Transforaminal Endoscopic Lumbar Discectomy)

Monoportal and biportal procedures.



[Click here to download the Datasheets](#)

Standard Imaging

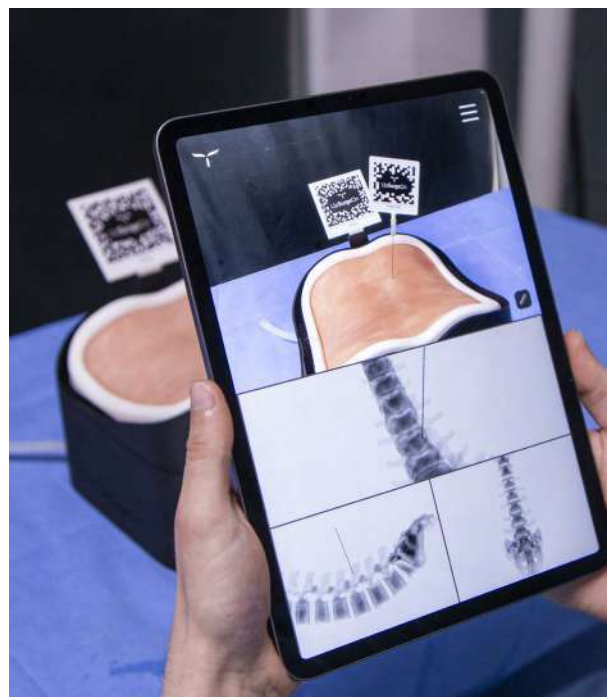
Scan the box with X-Ray and CT to verify the level and visualize the positioning of the fixation implants.

Mobile X-Ray

For the first time, surgical fluoroscopy is accessible through a user-friendly app, marking a groundbreaking shift in training and courses.

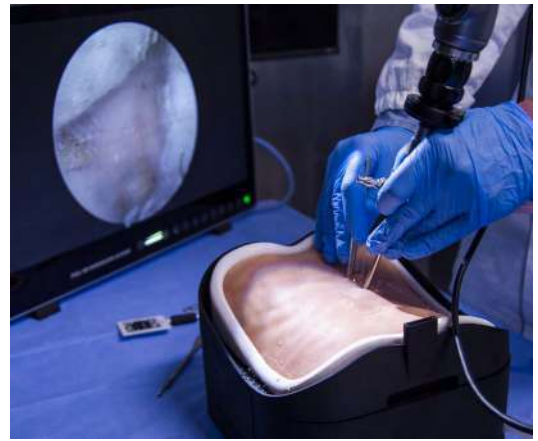
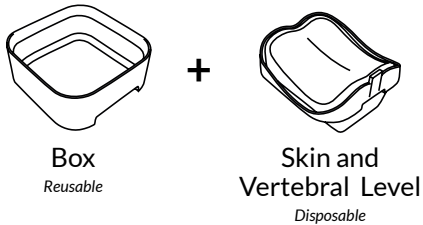
[Download the App](#)

Use of the tools integrated with the simulator.



Disposable Levels available

Designed to specifically mimic the properties of human tissues, such as softness, elasticity, and texture.



Composition of Endoscopic Lumbar Box

Skin and Vertebral Level | *Disposable*

Dissected Skin and subcutaneous tissue
Dissected paravertebral muscles
Vertebrae from L1 to S1



Box | *Reusable*

Universal drip-saver container



Contact

For direct purchase or if you need assistance in setting up your Lab or organizing a course, feel free to contact us for a tailored quotation. **Click here to submit a request**



Get in touch



This button sends an email to commercial@upsurgeon.com



EUROPE

UpSurgeOn S.r.l.
Via Cascina Venina 7,
20057 Assago (MI), Italy

USA

UpSurgeOn Inc.
Corporation Trust Center,
1209 Orange Street
Wilmington, DE 19801, USA

Follow us

UpSurgeOn is a hi-tech company specialized in psychomotor skill augmentation in microsurgeries through the use of bleeding-edge virtual and physical simulation technologies.



Go to website
www.upsurgeon.com

