

# ThoracolumbarBox

Posterior Approaches to the  
Thoracolumbar Spine

From T8 to S1

## Pathologies

Multilevel Lumbar Stenosis,  
Discopathy and Discarthrosis.

## Features



### Mobile X-Ray

Get the Neurosurgery App and simulate fluoroscopy using Mobile X-Ray Technology to set landmarks and plan your surgical approach.



### Standard X-Ray and CT Scan

The simulator is compatible with standard X-Ray, fluoroscopy and CT. Scan it and visualize the positioning of the fixation implants.



### Compatible with Standard Navigation

Upload the MRI scan on the navigator and start navigating the Box.

\*Contact us at [support@upsurgeon.com](mailto:support@upsurgeon.com) to check the compatibility of your Navigation technology.



### Disposable Parts

Disposable levels are readily available, designed to be replaced for continual, repeatable, and sustainable enhancement of your skills.



# The highest level of detail

## PROCEDURES:

- **Posterior decompression and fixation** of the lower thoracic segments
- **PLIF** (Posterior Lumbar Interbody Fusion)
- **TLIF** (Transforaminal Lateral Interbody Fusion)
- **Open and percutaneous approaches** (open reusable Skin Level and closed disposable Skin Level respectively)

## SURGICAL CAPABILITIES:

- **Laminectomies and flavectomies** 10 (T8-L5)
- **Multiple discectomies**  
Nerve root decompression through discectomies feasible from T8 to S1 (10 discectomies, T8-9, T9-10, T10-11, T11-12, T12-L1, L1-2, L2-3, L3-4, L4-5, L5-S1)
- **Multiple corpectomies**  
Total corpectomy feasible from T8 to L5 (10 corpectomies)
- **Instrumented surgery**  
Placement of any artificial disc and body, according to the above-mentioned levels (screws, disc cages, somatic cages)

## Anatomy

### ANATOMY INCLUDED IN THIS APPROACH:

- Open and closed skin
- Paravertebral muscles
- Flavum Ligament PLL (Posterior Longitudinal Ligament)
- Vertebrae from T8 to S1
- Discs from T8-9 to L5-S1
- Spinal cord
- Nerve roots
- Peridural fat



# Components

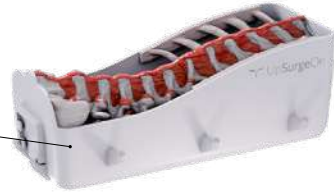
## SKIN LEVEL (Reusable)

- Dissected Skin and subcutaneous tissue (Open & MIS Skin)
- Dissected paravertebral muscles



## VERTEBRAL LEVEL (Disposable)

- Vertebrae from T8 to S1
- Cauda equina and lumbar nerve roots
- Peridural fat
- Lumbar discs with herniations



## BOX (Reusable)

- The external part having function of container and where we attach DRB for navigation



# Neurosurgery App

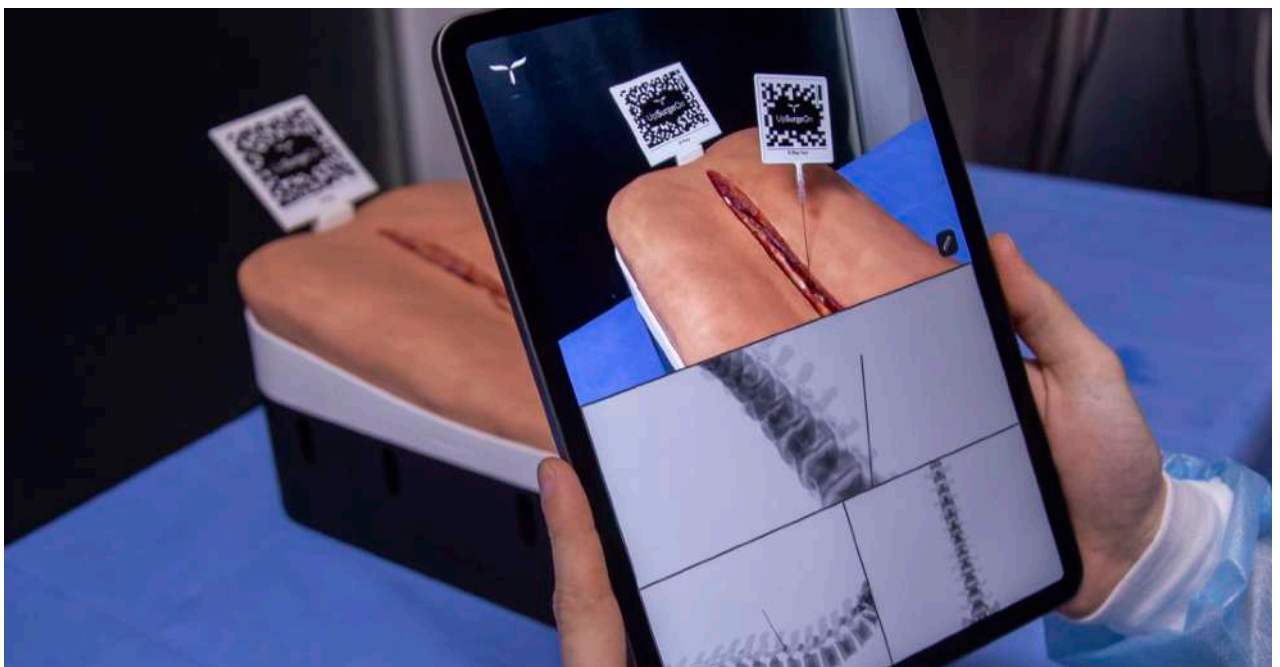
## MOBILE X-RAY

For the first time, surgical fluoroscopy is accessible through a user-friendly app, marking a groundbreaking shift in training and courses. Download the app now and make use of the tools integrated with the simulator.

Neurosurgery App



Frame the QR Code



# Navigation\*

Upload the CT scan on the navigator and start navigating the Box.

\*Contact us at [support@upsurgeon.com](mailto:support@upsurgeon.com) to check the compatibility of your Navigation technology.

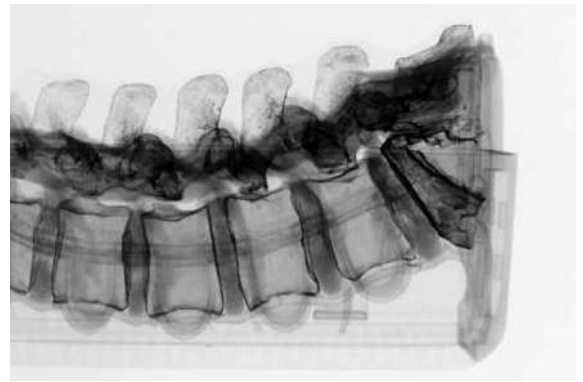
Please note: The NavigationFrame is not included.



# Standard Imaging

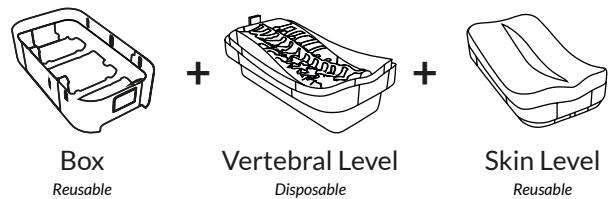
Scan the box with X-Ray and CT to verify the level and visualize the positioning of the fixation implants\*.

\*The box is not designed for MRI; do not subject it to MRI scans as it contains metallic components.



# Disposable Parts

Designed to specifically mimic the properties of human tissues, such as softness, elasticity, and texture.



## OPEN AND MINIMALLY INVASIVE SKIN LEVEL



# What is included

- Box
- 1 Skin Level (Open & MIS Skin)
- 1 Vertebral Level
- AR Marker
- Mobile X-Ray tools
- Mobile Navigation tools
- Lubricant



# General warnings

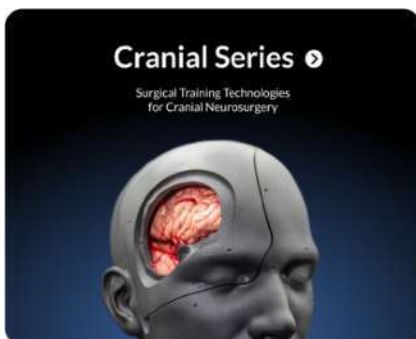
**THIS PRODUCT CONTAINS METALS:  
DO NOT PUT IT INTO A MAGNETIC RESONANCE!**

- Adult assembly required
- Never leave children unattended with the box
- Never put hot liquids above the tools
- Never put chemical substances above the tools
- Wash with water, do not use chemical products
- Keep the product in a dry environment
- Keep the product away from any heat source
- Pay attention to your eyes when using

All materials used to produce UpSurgeOn products are certified, safe and non-toxic. Use of gloves, protective glasses and mask is always suggested to maintain the cleanliness of the simulator and the tools, and as a standard practice during each simulation. Wearing safety equipment is mandatory in the use of drilling simulation.

# Discover our Technologies

We have developed the most advanced microsurgical simulation Technologies to date, with the goal of raising the bar for medical education and training.



**Thank you for choosing our Technologies!**

For any inquiries please contact us at [info@upsurgeon.com](mailto:info@upsurgeon.com)

Go visit our website at [www.upsurgeon.com](http://www.upsurgeon.com)

Go visit our store at [www.store.upsurgeon.com](http://www.store.upsurgeon.com)