



EDGEFREE® Fixed Frame Screen

USER'S GUIDE - N Type

Thank you for choosing an Akia Screens fixed frame projection screen! Congratulations on your new purchase! Please read through this user guide before utilizing the screen. Correct usage and maintenance will ensure a long product life.







Care and use instructions:

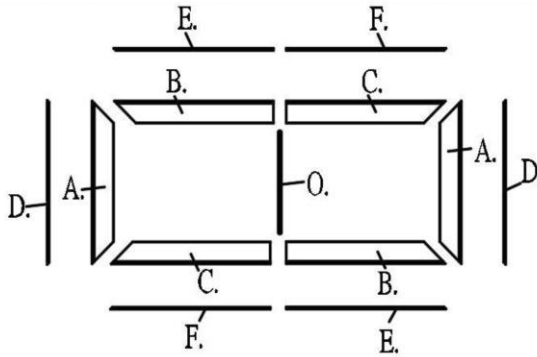
Dust, dirt, and scratches on the projection surface will affect the picture quality, please take note of the points below to prevent that from occurring:

- Do not touch the projection surface with your hands.
- Do not write or draw on the projection surface
- Do not use fingers or sharp objects to point on the projection surface; this will damage the screen material.
- Use a soft-damp cloth to clean the projection surface; do not use chemical cleaning agents or alcohol.
- Use clean water when dampening the cleaning cloth and do not rub against the material to clean it.

Product Description:

The Aeon Series is a fixed frame projection screen that uses Akia's EDGE FREE® technology. The EDGE FREE® design resembles a giant size flat panel TV display. The Edge free screen includes a bezel trim to further enhance the frame appearance and absorb projector overshoot.

1. Frame and Edge Trim Parts List			
Qty item	2 pcs Main Frame Parts	Qty item	2 pcs Edge Trim Parts
Part A.		Part D.	
Part B.		Part E.	
Part C.		Part F.	



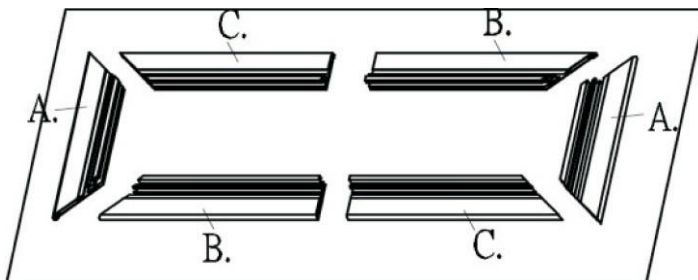
2. Hardware Parts List

a.		b.		c.		d.		e.	
f.		g.		h.		i.		j.	
k.		l.		m.		n.		o.	

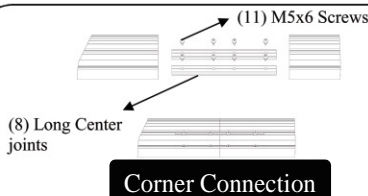
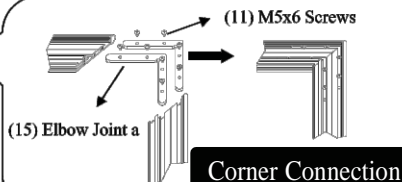
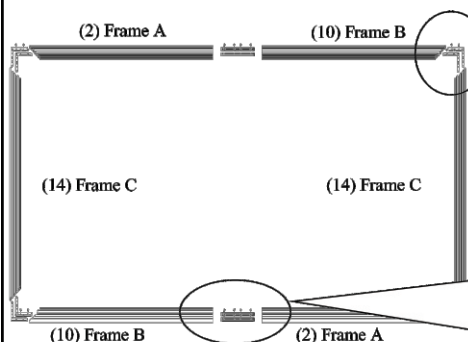
Item	Parts List	100"	125"	145"	150"
a.	Frame Center Joints - M5 (bottom position)	4	4	4	4
b.	Frame Elbow Joints M5(bottom position)	8	8	8	8
c.	Edge trim Center Joints M4	2	2	2	2
d.	Edge trim Elbow Joints M4	4	4	4	4
e.	M5x6 Screws	48	48	48	48
f.	Springs	60	75	90	100
g.	Spring Hook	2	2	2	2
h.	Wall Brackets	4	4	4	4
I	35CSK Wall Screws	8	8	8	8
j.	Hollow Wall anchors	8	8	8	8
k.	M4x4 Screws	24	24	24	24
l.	Center Support Bar	1	1	2	2
m.	White gloves	2	2	2	2
n.	Spring Edge Trim	8	8	8	8
o.	Long rod (sides) / Short rod (top/bottom)	2/4	2/4	2/4	2/4

Frame Assembly

Step 1: Position the pieces of the frame in the arrangement shown below.



Frame Assembly

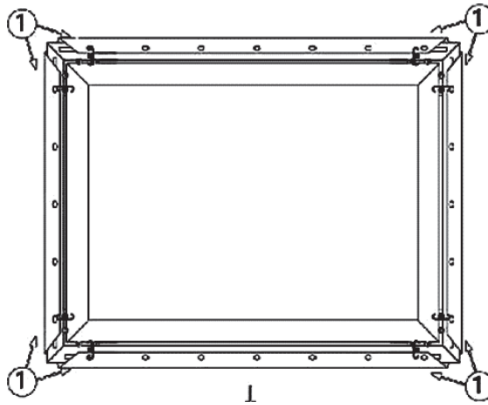
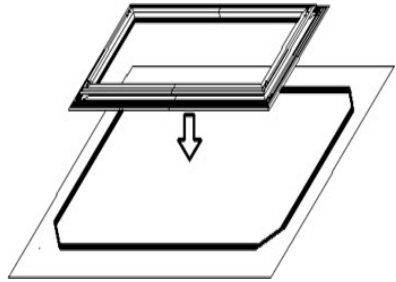
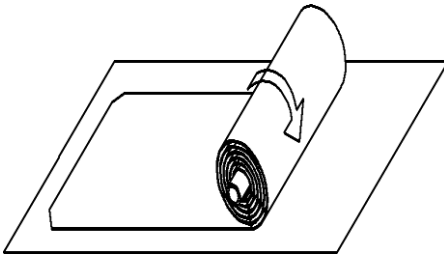


To prevent permanent damage to the screen material, be sure your hands are clean for the next step.

Step 2. Place the assembled frame to the side and carefully unroll the screen material face down on the top of a soft, clean cloth.

Step 3. Insert the four horizontal and two vertical Tension Rods into the corresponding sides of the screen material, while keeping the material lying flat. Careful not to snag on the holes at the edge of the material during this process, forcing the rods may damage the screen material.

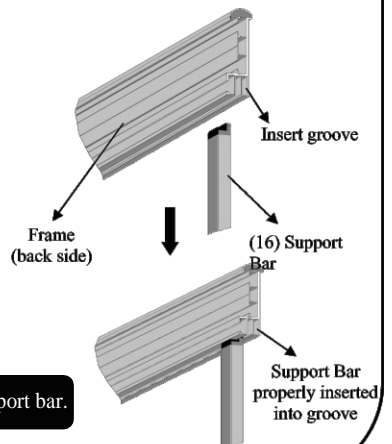
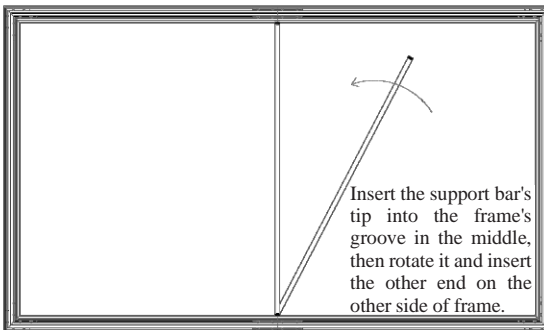
Step 4. Connect the elbow joints (b) to the top and bottom sections of the vertical frame. Once inserted, connect the vertical sections to the horizontal frame sections. Make sure all holes are in alignment and the frames pieces are flush (no gaps). They should form perfect right angles.



Center Support Bar

Step 5. Secure the elbow joints by fastening them with M5x6 screws (e), 4+4 at each corner.

Center support bar Installation

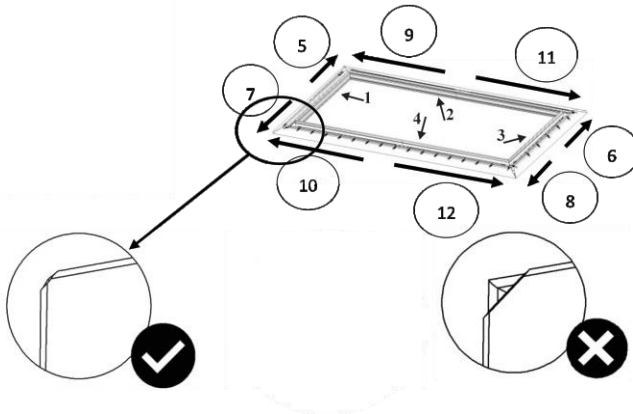
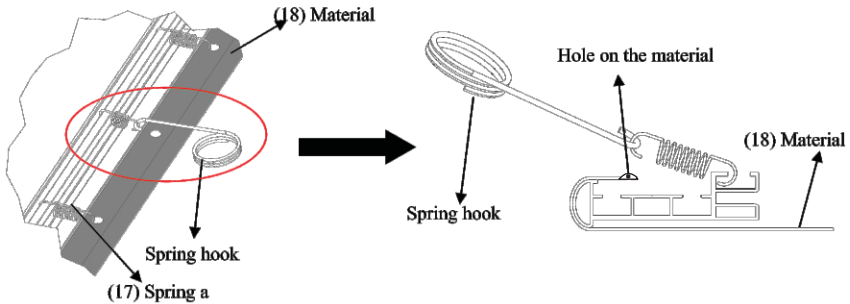


See illustration on the right side on how to properly install the Support bar.

Step 6: Two people are suggested for this step. Place the center Support Bar into the top groove on the back of the frame at the approximate center point. Carefully pull the bottom horizontal frame outward and place the center Support Bar at the approximate center point of the frame, carefully release the frame once the bar is centered. (See illustration below)

Spring Attachment Method

Step 7. Once the corners and center support bar are secure, continue attaching the remainder of the springs to the material. Connect the center of the vertical and horizontal portions of the material, then work your way around the rest of the frame.



Screen Material

Attention: Do not proceed with the Edge Trim installation until making sure there are no ripples in the material.

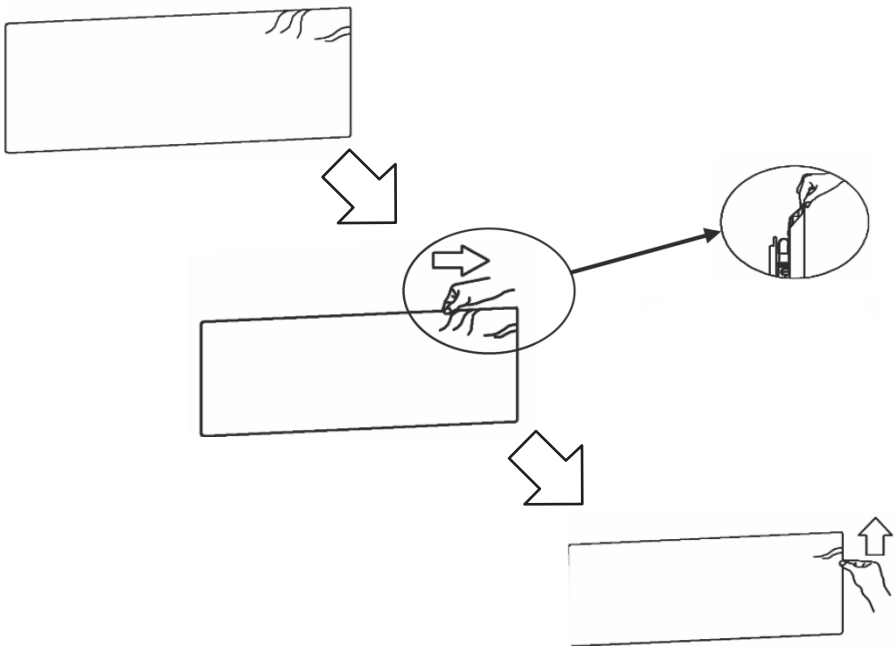
Note (after all springs have been attached):

Correct material installation -Corners of the screen material are properly wrapped around the corner edges of the frame and material is evenly tensioned and flat, creating a nicely taut surface.

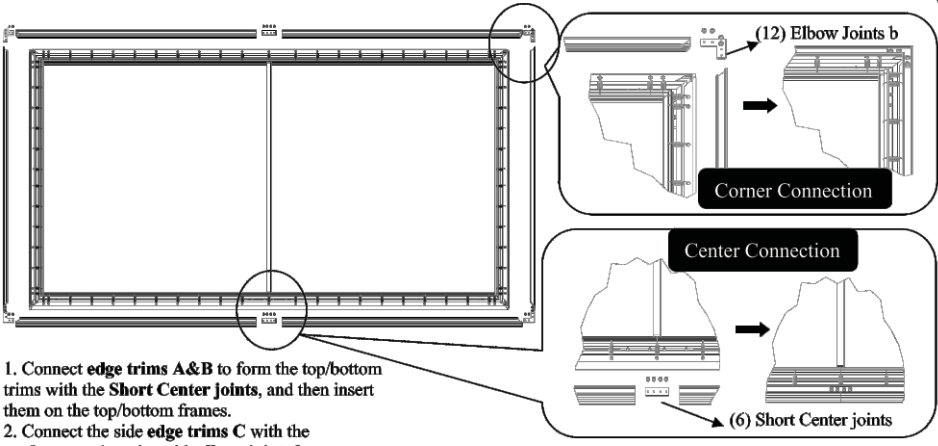
Incorrect material installation -The corners of the screen material are not properly wrapped along the edge of the frame leaving the material with unbalanced tension and an uneven finish. To correct, detach springs from material at the corner(s) where material does not lie flat along the edge of the frame, reposition the material so that it lies flat and wraps along the edge of the frame, and reattach springs to the material.

Note: Please make note of the yellow label and spring in the center of the frame. This is an indicator to start the screen material installation process from the middle area of the frame.

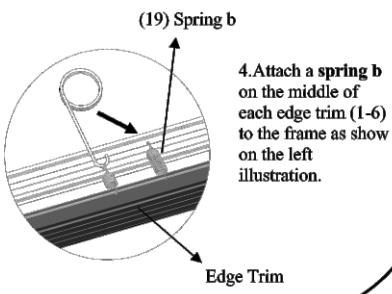
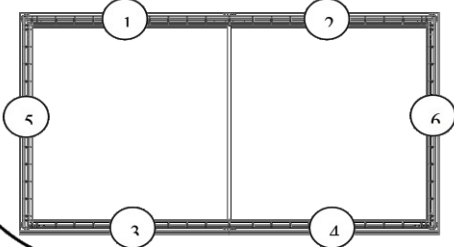
How to avoid getting ripples on the screen's material surface Solution: Pull and smooth out the material using your hand from the center to the corners, creating a nicely taut surface as shown below.



Edge Trim Installation



1. Connect **edge trims A&B** to form the top/bottom trims with the **Short Center joints**, and then insert them on the top/bottom frames.
2. Connect the side **edge trims C** with the top/bottom edge trim with **elbow joints b**.
3. Adjust the trim so that the top and bottom trim pieces are touching and show no gaps on the corners. Then fasten them with the M4 x4 screws.

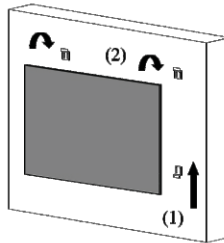


4. Attach a **spring b** on the middle of each edge trim (1-6) to the frame as show on the left illustration.

1. Connect edge trims E&F to form the top/ bottom trims with the edge trim center Joints, and then insert them on the top/bottom frames.
2. Connect the side edge trims C with the top/bottom edge trim with elbow joints D.
3. Adjust the trim so that the top and bottom trim pieces are touching and show no gaps on the corners. Then fasten them with the M4x4 screws. (k)
4. Attach an edge trim spring (N) on the middle of each edge trim (1-6) to the frame as show on the left illustration.

Wall Installation

- (1) Two people hold the screen. First align and place it on the bottom bracket.
- (2) Then pull up the screen on the top bracket and adjust the screen left to right as needed.



Top Bracket

Bottom Bracket

Note: The bottom bracket can be adjust from top to bottom.

Note : Make sure the direction of the Screen material is correct before you hang the screen to the wall. The material is labeled top or bottom.