



# Close the loop on 3D printing!

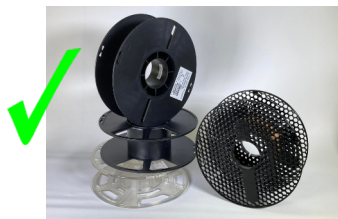
## Can it be returned to KiwiFil for re-use or recycling?

**YES!** 😊



### PACKING MATERIAL

Any KiwiFil packaging material: empty spools, boxes, bags, desiccant, info cards, stuffing paper, shipping boxes - basically anything we've sent to you! It will be re-used until it is too tattered, then it will be recycled.



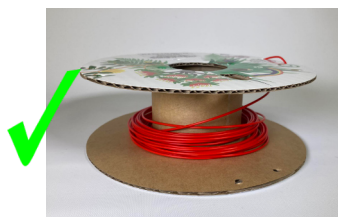
### 1 kg PLASTIC SPOOLS

1 kg plastic spools from any brand. The spools will be re-used and refilled with KiwiFil filament. Please keep them clean and dust-free.



### PLA & PETG PRINTS

Discarded, clean 3D prints sorted by material and clearly marked. If in doubt - leave it out! Any mix up will ruin the plastic. Please also sort by colour, particularly if the pieces are small. The prints will be recycled into filament.



### PLA & PETG REMNANTS

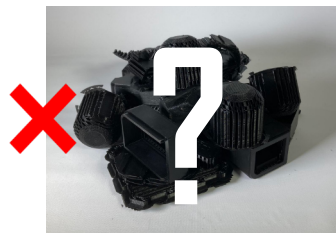
No use for that last bit of filament? Leave it on the spool for easy identification and recycling back into new filament.



### MULTI-COLOUR PRINTS

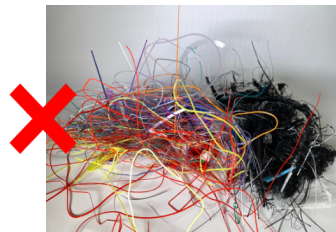
As long as the entire print is the same material (PLA or PETG), multi-colour prints can be recycled. Mark the bag or box with the material. Multi-coloured prints will be recycled into "Mystery Colour" or black filament.

**NO!** 😞



### UNKNOWN MATERIAL

If in doubt - leave it out! If PETG, ABS, Nylon, PC, etc. gets mixed in with the PLA, the plastic will be ruined and the extrusion equipment can be damaged.



### SKINNY PIECES & SPAGHETTI

Skinny pieces are difficult to recycle - don't include them unless they are carefully sorted by colour and labelled with the material type.



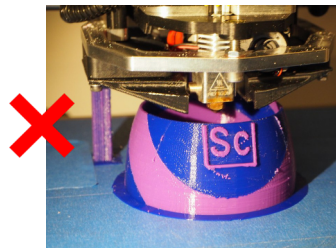
### MIXED COLOURS

Particularly small prints are incredibly time consuming to sort. Please help out by sorting the prints by colour.



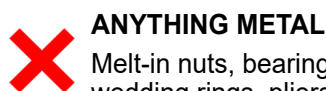
### BROKEN SPOOLS

The spools are re-used, not recycled. If they are broken, they can't be used again.



### MULTI-MATERIAL PRINTS

Unfortunately, prints made from more than one material cannot be recycled. Same material (all PLA or all PETG) but just different colours? That's OK!



### ANYTHING METAL

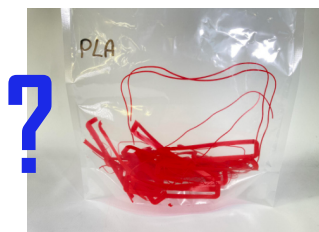
Melt-in nuts, bearings, screws, nozzles, wedding rings, pliers - anything metal will break the shredder and filament extruder.



### FOREIGN MATERIALS

Tape, pieces of the PEI bed coating, epoxy glue, paint, super glue, soil, dirt, dust - none of this should be in your filament, so make sure it isn't included with your prints for recycling.

**MAYBE....**



### BRIMS, SKIRTS, ETC.

Skinny pieces are difficult to recycle, but it may be possible if they are carefully sorted by colour and material. Make sure no dust, tape, etc. is included. Write the material type (PLA or PETG) on the bag or box.



### FILAMENT PIECES

Filament pieces are also difficult to recycle, but it may be possible if they are carefully sorted by material and labelled.

Drop off or ship to:

KiwiFil 3D Ltd.  
24 Campbell Street  
Tokoroa, 3420  
Waikato, New Zealand

Questions: [contact-us@kiwifil.com](mailto:contact-us@kiwifil.com)

  
**KiwiFil**  
Filament for a Future!  
Made in Aotearoa  
New Zealand  
[www.KiwiFil.com](http://www.KiwiFil.com)

Thank you for closing the loop on 3D printing!

