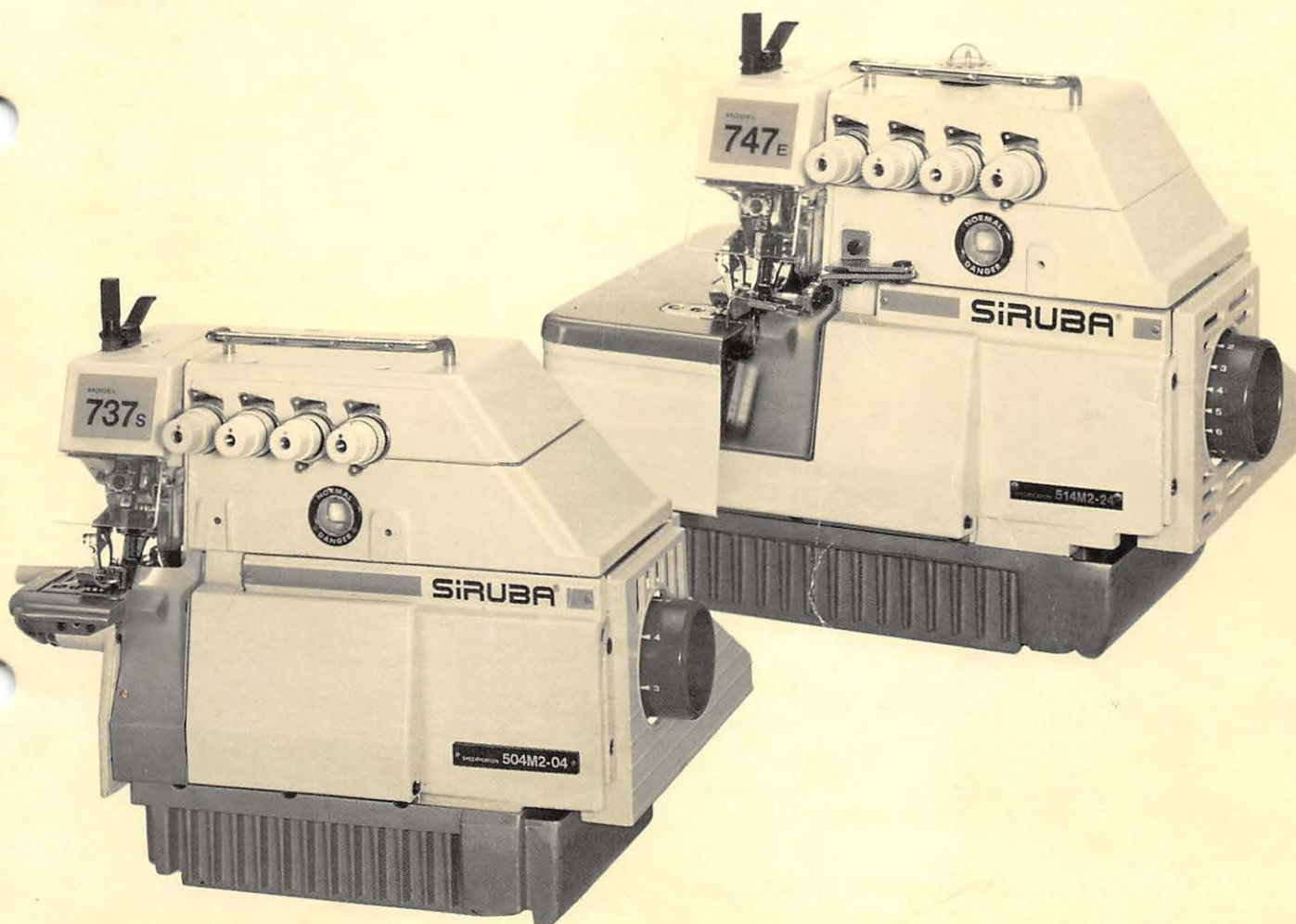


# SIRUBA<sup>®</sup> 700E/700S

---

## SALES GUIDE OVERLOCK/SAFETY STITCH MACHINE

---



KAULIN MFG. CO., LTD.

# I N D E X

-----

DESCRIPTION	PAGE
FEATURES OF OVERLOCK/SAFETY STITCH MACHINE	1
DESCRIPTION OF MACHINE MODELS AND SUBCLASSES	2
RECOMMENDED APPLICATION FOR OVERLOCK/SAFETY STITCH MACHINE	4
SPARE PARTS NUMBERING GUIDANCE	7
HOW TO CONVERT ONE MODEL OR SUBCLASS TO OTHERS	8
ATTACHMENTS AND DEVICES	9
SPARE PARTS CONVERSION CHART	10
SELECTION AND APPLICATION OF AVAILABLE DEVICES TO A SPECIFIED MACHINE MODEL	19
DIAGRAM OF DEVICES	20
DIAGRAM OF TABLE TOP CUT-OUT	53
DIAGRAM OF SPARE PARTS	55

FEATURES OF SIRUBA  
OVERLOCK / SAFETY STITCH MACHINE

1. Straight Needle, Ultra High Speed  
Up to 7500 SPM.
2. Excellent Oiling System  
Automatically lubricating, filtering oiling system.
3. Micro Adjustment of Differential Feeding.  
Precisely adjusting for feeding different stretching fabrics in continuous stitching or gathering.
4. Easy Push - Button Regulator for Stitch Length.  
Simple operation, not like those machines with traditional cams which need to be changed.
5. Thread and Needle Cooling System.  
Silicon thread lubrication and needle cooler to prevent thread breakage for increasing the efficiency of sewing and quality.
6. Various Functions & Latest Mechanism, available to fix with different attachments  
Advanced attachments for time saving and sewing quality improvement. Of Course increasing your profit.

DESCRIPTION OF MACHINE MODELS AND  
SUBCLASSES IS AS FOLLOWS

757	E	FT	-	516	M	2	-	3	5	CT
---	-	--		---	-	-		-	-	--
A	B	C		D	E	F		G	H	I

A. MODEL NO.

737 ..... 1 NEEDLE 3 THREAD OVERLOCK MACHINE  
 747 ..... 2 NEEDLE 4 THREAD OVERLOCK MACHINE  
 757 ..... 2 NEEDLE 5 THREAD SAFETY STITCH MACHINE  
 767 ..... 3 NEEDLE 6 THREAD SAFETY STITCH MACHINE

B. E: REGULAR OVERLOCK STITCH MACHINE  
 S: CYLINDER-BED OVERLOCK MACHINE

C. MACHINE WITH SPECIAL MECHANISM

FT ..... FRONT TOP-FEED OVERLOCK/SAFETY STITCH MACHINE  
 RT ..... REAR TOP-FEED OVERLOCK/SAFETY STITCH MACHINE

D. SEWING TYPE (Federal Stitch Type)

E. FABRIC WEIGHT

F ..... FINE TO LIGHT WEIGHT FABRIC.  
 L ..... LIGHT WEIGHT FABRIC.  
 M ..... MEDIUM WEIGHT FABRIC.  
 H ..... HEAVY WEIGHT FABRIC.  
 X ..... EXTRA HEAVY WEIGHT FABRIC.

F. TYPE OF FEED DOG

G. NEEDLE GAUGE

H. SEAM WIDTH

## I. DEVICE

AN ..... ANGLE KNIFE COMPLETE  
BK ..... BACK LATCHING DEVICE  
CT ..... HORIZONTAL TYPE PNEUMATIC CHAIN CUTTER  
DT ..... HORIZONTAL TYPE PNEUMATIC CHAIN CUTTER (FOR TOP FEED  
MACHINE)  
EC ..... ELECTRIC TAPE CUTTER  
ES ..... ELECTRIC HEMMING DEVICE  
ESS ..... ELECTRIC HEMMING DEVICE (FOR CYLINDER - BED OVERLOCK  
MACHINE)  
FF ..... FLOATING PRESSER BAR  
FL ..... FOOT LIFT CONNECTOR  
FX ..... TAPE HOLDER  
GA ..... GATHERING DEVICE  
GB ..... GATHERING DEVICE (FOR FRONT TOP FEED MACHINE)  
KU60-A... HEMMING DEVICE  
LF-A .... ELASTIC FEEDING DEVICE (ELECTRICAL TYPE)  
LFC-2 ... ELASTIC FEEDING DEVICE (MECHANICAL TYPE)  
LFC-2S .. ELASTIC FEEDING DEVICE (MECHANICAL TYPE FOR CYLINDER-  
BED OVERLOCK MACHINE)  
LF-D .... AUTOMATIC ELASTIC FEEDING DEVICE (FOR CYLINDER-BED  
OVERLOCK MACHINE)  
LS ..... ELASTIC HOLDING STAND  
PB ..... KNEE CONTROLLER FOR GB DEVICE  
PS ..... POCKET SEWER  
TB ..... FULLY SUBMERGED HOLDING BRACKET  
TG ..... TAPE GUIDE  
TR ..... ELASTIC CONTROLLER (FOR SHOWER CAP STITCHING)  
TW ..... SPECIAL GAUGE SET FOR TOWEL STITCHING  
TU ..... VENTURI DEVICE  
VT ..... VERTICAL TYPE PNEUMATIC CHAIN CUTTER  
WR/LF-B . SPAGHETTI DEVICE  
PZ ..... ZIPPER SEWING DEVICE

RECOMMENDED APPLICATION FOR  
OVERLOCK / SAFETY STITCH MACHINE

A) ONE NEEDLE THREE THREAD OVERLOCK MACHINE

1. 737E-504M2-04/737S-504M2-04  
For regular serging on light to medium fabric.
2. 737E-504M3-05  
For regular serging on light to medium fabric.
3. 737E-505F1-04/737S-505F1-04  
For regular blind hemming on light to medium knit fabric such as underwear or sportwear.
4. 737E-504M5-04BK  
For regular serging with back latching device to insert sewing chain when start to sew for preventing the head of seam from breaking down on knit fabric.
5. 737E-504M1-15  
For hemming handkerchief.

B) TWO NEEDLE FOUR THREAD OVERLOCK MACHINE

1. 747E-512M1-25  
For regular seaming on light to medium fabric.
2. 747E-514M2-24/747S-514M2-24  
The most popular overlock for regular seaming on light to medium knit fabric such as jogging suits, etc.
3. 747E-514M4-23  
For regular seaming on light to medium knit fabric.
4. 747E-514M7-23  
For regular seaming on bulky knit fabric such as sweater.
5. 747E-514H4-24GA  
For regular stitching and gathering on light to medium woven fabric.
6. 747E-514M5-23BK  
Regular seaming with back latching to insert sewing chain when start to sew for preventing the head of seam from breaking down on knit fabric.
7. 747E-514M9-23BK  
Regular seaming with back latching to insert sewing chain when start to sew for preventing the head of seam from breaking down on knit fabric.
8. 747S-514M4-24  
For regular seaming on light to medium knit fabric.

C) TWO NEEDLE FIVE THREAD SAFETY STITCH MACHINE

1. 757E-516L1-24 (or 35)  
Regular seaming on light to medium fabric such as shirt.
2. 757E-516M2-35 (or 55)  
Regular seaming on medium to heavy fabric such as shirt, slacks etc.
3. 757E-516H2-56  
Regular seaming on heavy fabric such as curtain.
4. 757E-516X2-56  
With tractor presser foot for seaming on heavy fabric such as jeans, workswear, etc.
5. 757E-516X3-56  
With tractor presser foot for seaming on bulky knitwear such as jacket.
6. 757E-516H4-35 (55)/GA  
Regular stitching and gathering on light to medium woven fabric.

D) 3 NEEDLE 6 THREAD SAFETY STITCH MACHINE

767E-516M2-324 (or 524)  
Regular seaming, specially suitable for short run high fashioned sewing, versatile five different sewing types by changing needle and looper.

E) FRONT TOP FEED OVERLOCK/SAFETY STITCH MACHINE

By extra upper feed dog in front of needles for a smooth stitching on slipper, different elasticity or extra heavy fabrics to prevent the shrinkage when sewing.

1. 747EFT-514M2-24  
Two needle four thread front top feed overlock machine for regular stitching.
2. 757EFT-516M2-35 (or 56)  
Two needle five thread front top feed safety stitch for regular sewing.
3. 747EFT-514H4-24GB/PB  
Two needle four thread front top feed overlock machine equipped with PB knee controller and GB gathering device for gathering on both upper ply and lower ply of fabrics.
4. 757EFT-516H4-35 (or 56)GB/PB  
Two needle five thread front top feed safety stitch machine equipped with PB knee controller and GB gathering device for gathering on both upper ply and lower ply of fabric.

F) REAR TOP FEED OVERLOCK/SAFETY STITCH MACHINE

By extra upper feed dog at the rear of needles to keep cloth/  
fabric smooth after seaming.

1. 747ERT-514M2-24

Two needle four thread rear top feed overlock machine, for  
general seaming on medium heavy fabric by extra upper feed dog  
behind needle to pull off fabric smoothly.

2. 757ERT-516M2-35 ( or 56)

Two needle five thread rear top feed safety stitch machine  
for general seaming on medium heavy fabric by extra upper  
feed dog behind needle to pull off fabric smoothly.



## SPARE PARTS NUMBERING GUIDANCE

1. NEEDLE PLATE..  
Regular : E xxx, Ex. E810  
For CT/DT : E xxxC . Ex. E810C  
For heavy thread (bigger needle hole) : E xxxA , Ex. E810A  
For Pocket Sewer : E xxxS , Ex. E982S
2. FEED DOG..  
Main, auxiliary or upper feed dog : D xxx, Ex. D438  
Differential feed dog : Hxxx, Ex. H 442
3. PRESSER FOOT ... P xxx  
For three & four thread : P152/F155(shoe only)  
\* complete set with KS56 : P152D-3 FOR 3 THREAD  
P253E-4 FOR 4 THREAD  
For five thread : P xxx, Ex. P500  
For piping device : P xxxP /Fxxx or P xxxP , Ex. P253P/F374,  
P136P, P501P  
For Pocket Sewer : P xxxS , Ex. P504S, P502S
4. PRESSER FOOT FINGER.. F xxx, Ex. F875
5. LOOPER...  
Upper looper : L P xx Ex. LP26, LP38  
Lower looper : K L 2 5  
Chain stitch looper : K M O 4  
Spreader : L P 2 1 , L P 2 3  
For heavy thread (bigger looper's hole):L P xxA , Ex. LP26A
6. KA -- KW : PARTS GROUP  
KA series -- machine bed frame  
KB series -- cover ( I )  
KC series -- cover ( II )  
KD series -- crank shaft drive mechanism  
KF series -- needle drive mechanism  
KG series -- thread drive mechanism  
KJ series -- upper looper drive mechanism  
KL series -- lower looper drive mechanism  
KM series -- chainstitch looper drive mechanism  
KN series -- chainstitch looper drive mechanism  
(for safety stitcher only)  
KP series -- feed mechanism  
KQ series -- feed mechanism  
KR series -- knife driving mechanism  
KS series -- presser foot mechanism  
KT series -- lubricating mechanism  
KW series -- thread stand  
KX series -- parts for semi-submerged installation  
KY series -- accessories  
SK series -- screw  
NK series -- nut  
WK series -- washer  
\* Parts No. end with "B", "D", "E", "F" -- These parts are modified. Ex. KB02E  
\* Parts No. attached with "E" -- Parts supplied with screw, Ex. KN16-E  
\* Parts No. attached with "C" -- Group parts. Ex. KJ30D-C  
\* Parts No. attached with "A" -- Component set parts, Ex. KT03D-A

# HOW TO CONVERT ONE MODEL OR SUBCLASS TO OTHERS

## NOTE:

PLEASE REFER TO SPARE PARTS CONVERSION CHART, WHEN CONVERSION IS REQUIRED.

1. Same model can be converted its subclass to any others by just changing gauge set [Needle Plate, Feed Dog, Presser Foot] .

Ex. 737E-504M1-15 / E934, D290, H442, P152/F525-A.

↓  
737E-504M3-05 / E797, D574, H445, P230/F371-A.

2. Three thread and four thread machine are interchangeable
  - A. Taking one needle down or replacing a new needle holder
  - B. To replace gauge set by the new subclass you desire
  - C. Change fabric guard, looper, crank, needle, if it is different

Ex. 747E-514M2-24 / E809, D575, H442, P253/F374-A, KG142, KF26, KJ11B, KJ13

↓  
737E-504M3-05 / E797, D574, H445, P230/F371-A, KG131, KF25, KJ09B, KJ10

3. Five thread machine can be converted to four thread machine
  - A. Take down chain stitch looper KM04
  - B. Replace gauge set by the new sub-class you desire
  - C. Change fabric guard, looper, needle holder crank, needle...if it is different

Ex. 757E-516M2-35 / E982, D581, H497, P504, KG153, KF25 KJ12, DC27#14

↓  
747E-514M2-25 / E810, D575, H445, P253/F374-A, KG142, KF26, KJ13, DC27#11

Remarks: (1) Due to speed difference, it is not so practical in this kind of change, unless the change is really needed.

(2) Five thread machine can also be changed to three thread machine as above said process.

4. Five thread machine can be converted to six thread machine
  - A. Change gauge set
  - B. Replace needle guard KG31 by KG32
  - C. Install additional thread tension set (KG02x1, KG04x1, KG05x1, KG06x1, KG07x2, KG08x1, KG09x1) on top cover KC01

Ex. 757E-516L1-35 / E839(35) , D579, H492, P501, KG155

↓  
767E-516M2-324 / E988(324), D581, H500, P255, KG333 and extra thread tension set.

5. Because of different mechanism, regular machines can not be changed to machines with top feed mechanism.

## ATTACHMENTS AND DEVICES

When ordering attachment separately, please always specify the machine model & subclass.

### 1. AN ... ANGLE KNIFE COMPLETE

FUNCTION: To sew on extra heavy material for an easy trimming on the fabric.

\* Available machine : Subclass 516X2-56

\* When ordering machine with this attachment, please specify as 757E-516X2-56/AN

### 2. BK ... BACK LATCHING DEVICE

FUNCTION: To insert sewing chain into overedging when start to sew for preventing the head of seam from breaking.

\* Available machines :

737E-504M5-04/BK --- regular 3 thread machine

747E-514M5-23/BK --- regular 4 thread machine

747E-514M9-23/BK --- 4 thread machine specially for bulky knitwear

\* When separately ordering the BK device, it should be numbered as BK-04E for 3 thread or BK-23E for 4 thread

\* Remarks: 514M5-23BK has two kinds of needle plates  
(1) E591 for medium heavy fabric (standard)  
(2) E591B for light fabric

\* When ordering complete machine, please specify as

(1) 747E-514M5-23/BK (E591B)

(2) A special hand wheel, Parts No. KD35, is necessary in case of ordering needle positioner motor.

(3) A different cloth plate, Parts No. BK01E, is excluded and will be extra charged if it is needed.

(4) The standard 4 thread machine with BK be fixed with needle plate E591B unless otherwise specified.

### 3. CT ... HORIZONTAL TYPE PNEUMATIC CHAIN CUTTER

FUNCTION: To cut thread chain by air suction which can be supplied by vacuum unit or air compressor

\* Available machines: Four thread, five thread, or six thread overlock machines.

\* Remarks:

- (1) There are three kinds of air suction devices for selection.
  - (a) CSA - CSA is a vacuum motor in square tank so for collecting waste.
  - (b) CSB - CSB is a suction motor combined with a plastic waste tank.
  - (c) TU - TU is a Venturi device connected to the air compressor.
- (2) Standard cloth guide CT06 is used for medium to weight weight. Special cloth guide CT03 is for light fabric, which has to be specified when CT is ordered.
- (3) The needle plate fixed with this device is same Parts number as usual but just an additional "C" put behind its number, Ex. Needle Plate E809 for 747E-514M2-24, but E809C is for 747E-5142-24/CT is E809C.
- (4) The cloth plate CT01E or CT02E is excluded and should be extra charged if it is required for CT device .

### 4. DT ... HORIZONTAL TYPE PNEUMATIC CHAIN CUTTER

FUNCTION : All same as CT device.

\* Available machine: For top feed overlock machines only.

\* Remarks:

- (1) Standard cloth guide used for medium to weight fabric is DT07. Special cloth guide DT07A is for light fabric, which has to be specified when ordering CT.
- (2) The needle plate fixed with this device is same parts number as usual but just an additional "C" put behind its number. Ex.: needle plate for 747EFT-514M2-24 is E809 but for 747EFT-514M2-24/DT is E809C.
- (3) The cloth plate DT12E or DT13E is excluded and should be extra charged if it is required for DT.

5. EC ... ELECTRIC TAPE CUTTER

FUNCTION: To cut cloth tape, such as elastic, piping rope and/or thread chain after sewing.

\* Available machine: This can be fixed on all subclasses of overlockers. Especially for the overlockers with elastic feeding device (LF-C), tape guide (TG), pocket sewer (PS/TA), gathering/piping device (GA/P or GB/PB/P)... etc.

\* Please specify desired voltage & hertz when ordering.

- (1) Voltage 110V or 220/240V & hertz 50HZ or 60HZ.
- (2) If you want this operation to be controlled by knee, please specify as EC47-A(knee), this will be extra charged.
- (3) The cloth plate EC49E/EC50E or EC39E/EC40E is excluded and should be extra charged if it is required for EC device .
- (4) The needle plate fixed with this device is same Parts number as usual but just an additional "C" put behind its number. Ex. Needle Plate for 747E-514M2-24 is E809 but for 747E-514M2-24/EC is E809C.

6. ES ... ELECTRIC HEMMING DEVICE FOR 700E SERIES.  
ESS .. ELECTRIC HEMMING DEVICE FOR 700S SERIES.

FUNCTION: To prevent skip stitching around cross seam during blind hemming on knitwear such as underwear, sportswear, etc. This function is controlled by digital control box according to the thickness of fabric.

\* Available machine: 737E-505F1-04/ES  
737S-505F1-04/ESS

\* Please specify voltage & hertz when ordering.  
(110V or 220/240V & 50HZ or 60HZ )

7. FF ... FLOATING PRESSER BAR

FUNCTION: Floating presser on light weight fabric to prevent puckering.

\* Available machine: 757E-516L1-24 (or35)/FF

8. FL ... FOOT LIFT CONNECTOR

FUNCTION: To lift up the presser foot easily.

\* Available machine: Top feed machine only.

## 9. FX ... TAPE HOLDER

FUNCTION: To hold the tape for a smoothly feeding.

\* Available machine: overlockers with gathering, piping, pocket binding or spaghetti device etc.,

## 10. GA ... GATHERING DEVICE

FUNCTION: Regular or irregular gathering on lower ply of fabric

\* Available machine: 747E-514H4-24/GA  
757E-516H4-35 (or 55)/GA

\* Remarks:

- (1) The piping binder should be charged if required. When ordering this piping binder, please specify the width of cloth tape and finished size in m/m such as:  
Ex. GA/KV57(25mm/6mm)
- (2) Presser Foot has a cord hole for piping sewing, nad its Parts number is same as usual but with additional "P" behind the number  
Ex. 747E-514H4-24GA                      Presser foot is P136  
747D-514H4-24GA/KV57                    Presser foot is P136P

## 11. GB/PB ... GATHERING DEVICE WITH KNEE CONTROLLER

FUNCTION: Intermittently gathering on both upper and lower plies of fabrics. It can also be operated to gather on either upper or lower ply of fabric.

\* Knee controller mainly controls the gathering on upper ply of fabric.

\* Available machine: 747EFT-514H4-24/GB/PB  
757EFT-516H4-35(or 56)/GB/PB

\* Remarks:

- (1) The piping binder should be charge if requestrd. When ordering this binder, please specify the width of cloth tape and finished size in m/m such as:  
Ex. GB/PB/P(25mm/6mm)(cloth width/finished size)
- (2) Presser Foot has a cord hole for piping sewing, its Parts number is same as usual but with additional "P" behind the number.  
Ex. 747EFT-514H4-24GB/PB/P Presser Foot is P454  
747EFT-514H4-24GH/PB/P Presser Foot is P454P

## 12. KU60-A ... HEMMING DEVICE

FUNCTION: Blind hemming on light to medium weight fabric such as underwear or sports wear etc.

\* Available machine: 737E-505F1-04 only.

\* Remarks: If regular machine is converted to 737E-505F1-04, for hemming purpose gauge set should be changed, and KU60-A should be added together.

### 13.LF-A ... ELECTRIC FEEDING DEVICE

FUNCTION: Releasing elastic or tape by electronic motor, and controlling the length of elastic to keep an even tension for seaming.

\*Available machine: Overlockers with LFC-2, LF-D or TG device for inserting tape, elastic or lace, etc.

\*Please specify voltage & hertz when ordering.  
(110V or 220/240V & 50HZ or 60HZ)

### 14.WR/LF-B ... SPAGHETTI DEVICE & ELASTIC FEEDING DEVICE

FUNCTION: Feeding in knitted tape and producing spaghetti tube for swimming suit or night gown.

\* Available machine: 737E/WR/LF-B

\* Remarks: The standard size of tape width for the device is 7/8" (22m/m) and the finished size is about 5m/m in diameter.

### 15.LFC-2 .. ELASTIC FEEDING DEVICE (MECHANICAL TYPE) FOR 700E SERIES. LFC-2S . ELASTIC FEEDING DEVICE (MECHANICAL TYPE) FOR 700S SERIES.

FUNCTION: For feeding an equal length of elastic for sewing.

\* Available machine: 737E-504M2-04/LFC-2  
747E-514M2-24/LFC-2  
737S-504M2-04/LFC-2S  
747S-514M2-24/LFC-2S

\* Remarks:

(1) The standard Presser Foot is P101. Please specify when ordering in case of special size is required. Ex. LFC-2(P103).

Presser foot	Width of Elastic
P101-A	2mm - 13mm
P102-A	2mm - 20mm
P103-A	2mm - 30mm
P103-W	2mm - 35mm

(2) To increase sewing efficiency and quality, LF-A (Elastic Feeding) and EC (Push Button Electric Tape Cutter) are suggested to be used with.

(3) The feeding speed of LFC-2 & LFC-2S can be adjusted through the gear box.

16.LF-D ... AUTO ELASTIC FEEDING DEVICE (COMPLETE SET) FOR 700S SERIES ONLY.

FUNCTION: Fully digital control of elastic length and tension for two different sewing requirements. Automatic elastic inserting and cutting, automatic elastic measuring, automatic waste function. Electric feeding and cutting by pneumatic. It is suitable for sewing underwear or swimwear.

\* Available machine: 737S-504M2-04/LF-D  
747S-514M2-24/LF-D

\* Remarks:

(1) This device has to be ordered in complete set, including machine head, LF-A Elastic Feeding device, VT Vertical Chain Cutter, TU Venturi device (for air compressor), stand, table and needle positionER (or servo) motor.

(2) Available Presser Foot for elastic elastic tape size

PRESSER FOOT	ELASTIC TAPE SIZE
-----	-----
P210	LESS THAN 16MM (FOR 737S)
P210B	16 - 32MM (FOR 747S)

(3) Please specify the Voltage & hertz needed, but this device is only suitable for single phase electricity.

17.LS ... ELASTIC HOLDING STAND

FUNCTION: To put the roll of elastic or woven tape for inserting and sewing.

\* Available machine: For machines with LFC-2 Elastic Feeding device or TG Tape Guide etc.

18.PS ... POCKET SEWER

FUNCTION: Binding an extra tape into thread chain on edge of slack's pocket.

\* Available machine: 757E-516M2-35(or 55)/PS

\* Remarks: This device will be supplied with standard binder 3/8" (9.5mm) unless otherwise specified.

19. TA ... POCKET BINDING DEVICE

FUNCTION: To sew an extra chainstitch on the edge of pocket to cover the binding fabric.

\* Available machine: 757E-401M2-50/TA

\* Remarks: This device will be supplied with standard 25.4mm binder unless otherwise specified.



20.TB ... FULLY SUBMERGED HOLDING BRACKET

FUNCTION: For mounting sewing head in fully submerged position.

\* Available machine: all models of overlock machines.

21.TG ... TAPE GUIDE

FUNCTION: Guiding the woven tape for sewing on the shoulder of knitwear to prevent abnormal stretching.

\* Available machine: 747E-514M2-24/TG

\* Remarks: The Presser Foot used is P101-A, and the maximum width for tape inserting is 1/4" (6.35mm).

22.TR ... ELASTIC CONTROLLER

FUNCTION: For non-woven or plastic cloth shower cap sewing.

\* Available machine: 737E-504M2-04/TR

23.TU ... VENTURI DEVICE

FUNCTION: To control suction air from compressor by pressing foot pedal. This device is for sucking thread chain into cutter when sewing is finished.

\* Available machine: For machines with cutting device such as CT,DT,VT.

24.TW ... TOWEL GAUGE DEVICE

FUNCTION: For towel sewing

\* Available machine: 757E-401M1

25.VT ... VERTICAL TYPE PNEUMATIC CHAIN CUTTER

FUNCTION: To cut thread chain by air suction which can be supplied by vacuum unit or air compressor.

\* Available machine: three or four thread machine.

\* Remark:

- There are three kinds of air suction devices for selection.
- (a) CSA - CSA is a vacuum motor in square tank for collection waste. This device is less noisy.
  - (b) CSB - CSB is a suction motor combined with a plastic waste tank.
  - (c) TU - TU is a Venturi device connected to the air tube of the air compressor.

26.PZ ... ZIPPER SEWING DEVICE

FUNCTION: Used to sew the zipper on the pants of jeans..

\*Available machine : 737E-504M2-04/PZ  
747E-514M2-24/PZ

S P A R E   P A R T S   C O N V E R S I O N   C H A R T

MODEL NO.	NEEDLE PLATE	FEED DOG			PRESSER FOOT	LOOPER	NEEDLE HOLDER	NEEDLE DC27
		MAIN	AUX.	DIFF				
505F1-04	E784	D438	D674	H442	P152D-3	LP21	KG131	# 9
504M1-15	E934	D438	D912	H442	P152D-A	LP26	KG131	# 9
504M2-04	E800	D440	D095	H445	P253E-3	LP26	KG131	#11
504M2-04TR	E011	D015	D011	H445	P101-3	LP26	KG131	#11
504M2-04/ LF-C	E800	D440	D095	H445	P102-3	LP26	KG131	#11
504M2-04/ WR/LF-B	E001	----	----	----	-----	LP26	KG131	#11
504M3-05	E797	D440	D674	H445	P230-3	LP26	KG131	#11
504M3-05PZ	E797	D440	D674	H445	PZ01/PZ03-A	LP26	KG131	#11
504M5-03BK	E588	D969	D675	H974	P975-3	LP26	KG131	#11
504M5-04BK	E589	D969	D675	H974	P975-3	LP26	KG131	#11
505F1-04	E784	D438	D674	H442	P152D-3	LP26	KG131	#11
512M1-25	E810	D440	D095	H445	P253E-4	LP36	KG142	#11
512M8-25	E810A	D441	D095	H446	P253E-4	LP36A	KG142	#16
514M2-24	E809	D440	D095	H445	P253E-4	LP26	KG142	#11
514M2-24/ LF-C	E809	D440	D095	H445	P102-4	LP26	KG142	#11
514M2-24TG	E809	D440	D095	H445	P101-4	LP26	KG142	#11
514M2-24TR	E012	D015	D011	H445	P101-4	LP26	KG142	#11
514M2-25	E810	D440	D095	H445	P253E-4	LP26	KG142	#11
514M5-23BK	E591B	D969	D675	H974	P975-4	LP26	KG142	#11
514M7-23	E804A	D441	D674	H446	P230-4	LP26A	KG142	#16
514M7-24	E809A	D441	D095	H446	P253E-4	LP26A	KG142	#16
514M7-24TG	E809A	D441	D095	H446	P101-4	LP26A	KG142	#16

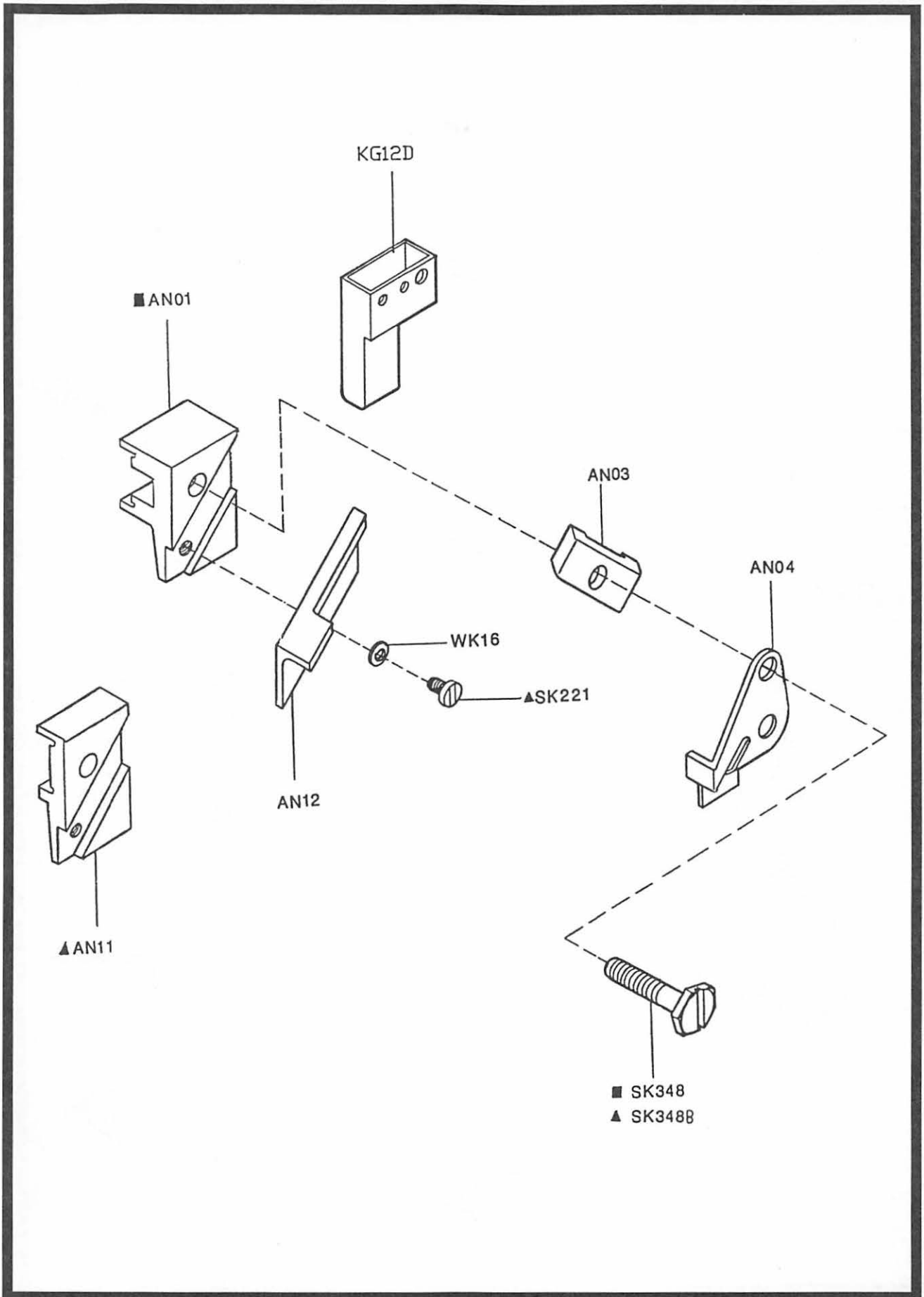
MODEL NO.	NEEDLE	FEED DOG			PRESSER	LOOPER	NEEDLE	NEEDLE
	PLATE	MAIN	AUX.	DIFF	FOOT		HOLDER	DC27
514H4-24GA	E809	D958	D095	H959	P136-A	LP26	KG142	#11
401M1	E110	D105	----	H101	P767-A	LP26	KG153	#14
401M2-50	E005	D005	D006	H005	P005-A	----	TA155	#14
516L1-24	E834	D487	D060	H492	P500-A	LP26	KG152	#14
516L1-35	E839	D487	D060	H492	P504-A	LP26	KG153	#14
516M2-35	E982	D489	D502	H497	P504-A	LP26	KG153	#14
516M2-35PS	E982S	D489	D502	H497	P504S-A	LP26	KG153	#14
516M2-55	E986	D489	D502	H500	P502-A	LP26	KG155	#14
516M2-55PS	E986S	D489	D502	H497	P502S-A	LP26	KG155	#14
516H2-56	E868	D490	D502	H501	P502-A	LP38D	KG155	#18
516H4-35GA	E982	D008	D502	H957	P508-A	LP26	KG153	#14
516H4-55GA	E986	D956	D502	H975	P509-A	LP26	KG155	#14
516F1-34	E838	D578	D425	H491	P504-A	LP26	KG153	# 9
516X2-56	E870	D490	D502	H501	P960-A	LP38D	KG155	#18
516X3-56	E870	D490	D502	H501	P960-A	LP38D	KG155	#B64
516M2-324	E989	E971	D502	H497	P233-A	LP26	KG333	#11
516M2-524	E988	D972	D502	H500	P255-A	LP26	KG355	#11
516H4-324/ GA	E988	D971	D502	H957	P510-A	LP26	KG333	#11
516H4-524/ GA	E988	D972	D502	H957	P511-A	LP26	KG355	#11

TOP FEED TYPE	NEEDLE PLATE	FEED DOG			PRESSER FOOT	TOP FEED DOG	LOOPER	NEEDLE HOLDER	NEEDLE DC27
		MAIN	AUX.	DIFF					
FT- 514M2-24	E809	D440	D095	H445	P454-A	D453	LP38	KG142	# 9
FT- 514H4-24	E809	D440	D095	H445	P454-A	D453	LP38	KG142	# 9
FT- 516M2-35 -56	E861	D489	D502	H497	P466-A	D469	LP38	KG153 KG155	#14
	E866			H500	P463-A				
FT- 516H4-35 -56	E861	D489	D502	H498	P466-A	D469	LP38	KG153 KG155	#14
	E866			H500	P463-A				
RT- 514M2-24	E809	D440	D095	H445	P068/ F875-A	D070	LP38	KG142	# 9
RT- 516M2-35 -56	E169	D066	D067	H497	P053-A	D064	LP38	KG153 KG155	# 9
	E129			H500	P056-A				

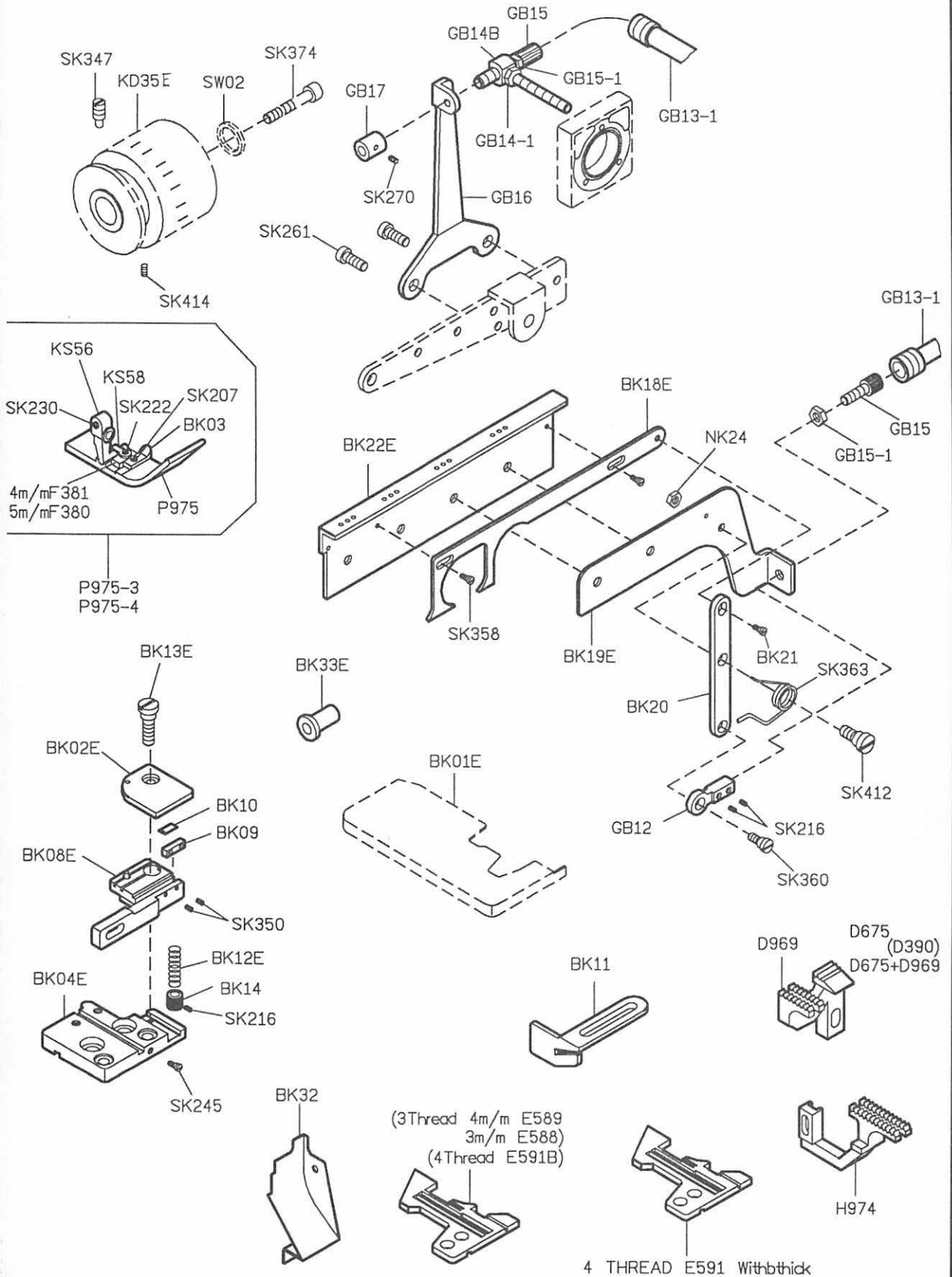
SELECTION AND APPLICATION OF AVAILABLE  
DEVICES TO A SPECIFIED MACHINE MODEL

MODEL	AVAILABLE DEVICE
737E-504M2-04	VT, VT/CSA, VT/CSB, VT/TU TR, TR/LS, TR/LF-A, TR/EC, TR/LS/EC, TR/LF-A/EC, LFC-2, LFC-2/LF-AA, LFC-2/LS, LFC-2/EC, LFC-2/LF-A/EC, LFC-2/LS/EC. PZ
737S-504M2-04	VTS, VTS/CSA, VTS/CSB, VTS/TU LFC-2S, LFC-2S/LF-A, LFC-2S/LS, LF-D.
737E-504M3-05	VT, VT/CSA, VT/CSB, VT/TU
737E-505F1-04	ES, ES/VT, ES/VT/CSA, ES/VT/CSB, ES/VT/TU
737S-505F1-04	ESS, ESS/VT, ESS/VT/CSA, ESS/VT/CSB, ESS/VT/TU
737E-504M5-04BK	
737E-504M1-15	VT, VT/CSA, VT/CSB, VT/TU
747E-512M1-25	VT, VT/CSA, VT/CSB, VT/TU, CT, CT/CSA, CT/CSB, CT/TU
747E-514M2-24	VT, VT/CAS, VT/CSB, VT/TU, CT, CT/CSA, CT/CSB, CT/TU TG, TG/EC, TG/LF-A, TG/LS, TG/LF-A/EC, TG/LS/EC LFC-2, LFC-2/LF-A, LFC-2/LS, LFC-2/EC, LFC-2/LF-A/EC, LFC-2/LS/EC, PZ
747S-514M2-24	VTS, VTS/CSA, VTS/CSB, VTS/TU LFC-2S, LFC-2S/LF-A, LFC-2S/LS, LF-D
747E-514M4-23	CT, CT/CSA, CT/CSB, CT/TU
747E-514M7-23	CT, CT/CSA, CT/CSB, CT/TU TG, TG/EC, TG/LF-A, TG/LS, TG/LF-A/EC, TG/LS/EC
747E-514H4-24GA	CT, CT/CSA, CT/CSB, CT/TU, P, P/FX, P/EC, P/FX/EC
747E-514M5-23BK	
747E-514M9-23BK	
757E-516L1-24/35	CT, CT/CSA, CT/CSB, CT/TU, FF
757E-516M2-35/55	CT, CT/CSA, CT/CSB, CT/TU, PS, PS/FX, PS/EC, PS/FX/EC
757E-516H2-56	CT, CT/CSA, CT/CSB, CT/TU
757E-516X2-56	CT, CT/CSA, CT/CSB, CT/TU, AN
757E-516X3-56	CT, CT/CSA, CT/CSB, CT/TU, AN
757D-516H4-35/55GA	CT, CT/CSA, CT/CSB, CT/TU, P, P/FX, P/EC, P/EC/FX
757E-401M2-50TA	FX
757E-401M1-TW	
767E-516M2-324/524	CT, CT/CSA, CT/CSB, CT/TU,
747EFT-514M2-24	DT, DT/CSA, DT/CSB, DT/TU, FL
747EFT-516H4-24GB/PB	DT, DT/CSA, DT/CSB, DT/TU, FL P, P/EC, P/FX, P/EC/FX
757EFT-516M2-35/56	DT, DT/CSA, DT/CSB, DT/TU, FL
757EFT-516H4-35(56) /GB/PB	DT, DT/CSA, DT/CSB, DT/TU, FL P, P/EC, P/FX, P/EC/FX
747ERT-514M2-24	DT, DT/CSA, DT/CSB, DT/TU, FL
757ERT-516M2-35/56	DT, DT/CSA, DT/CSB, DT/TU, FL

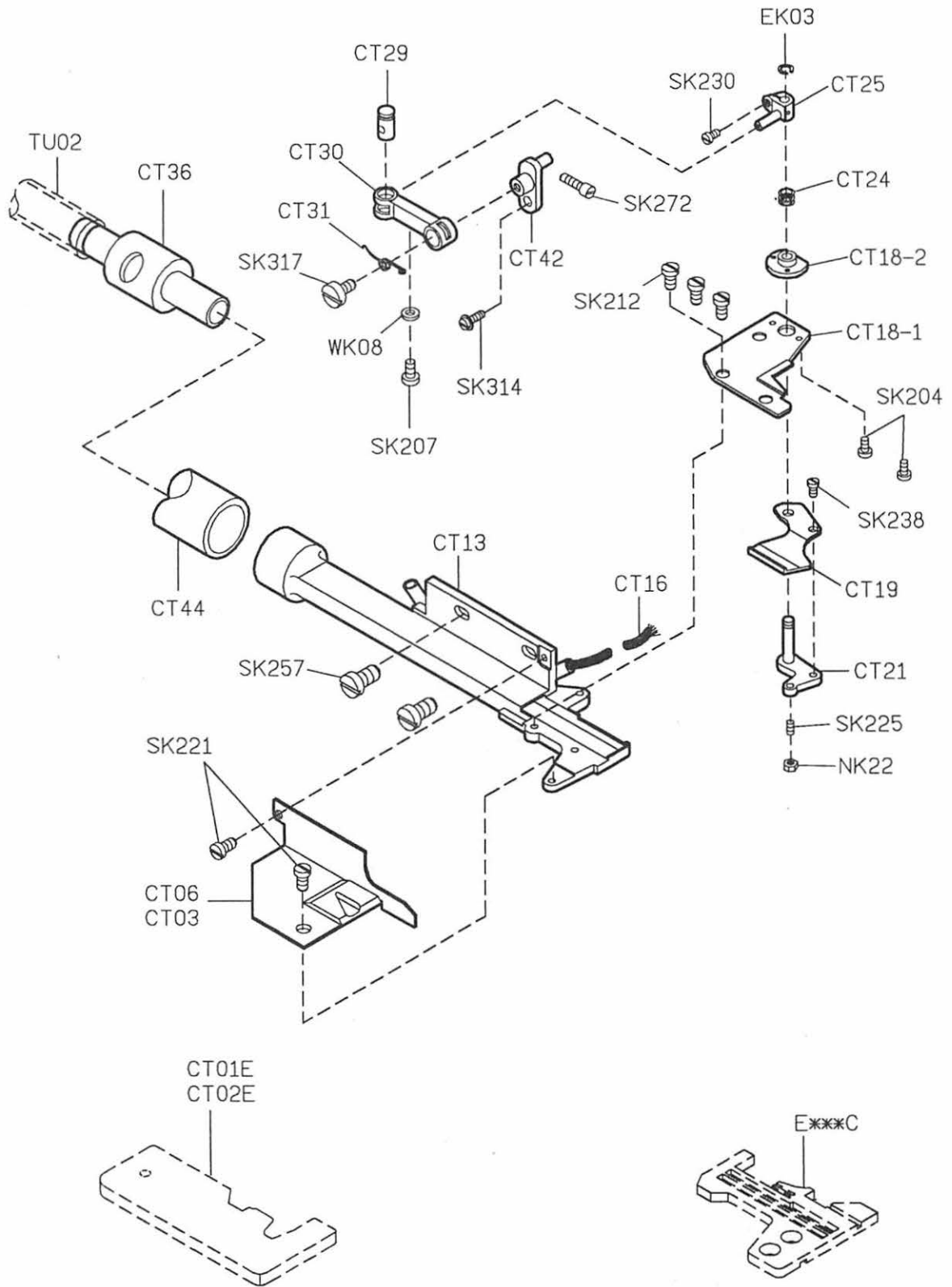
# AN ANGLE KNIFE



# BK-E BACK LATCHING DEVICE

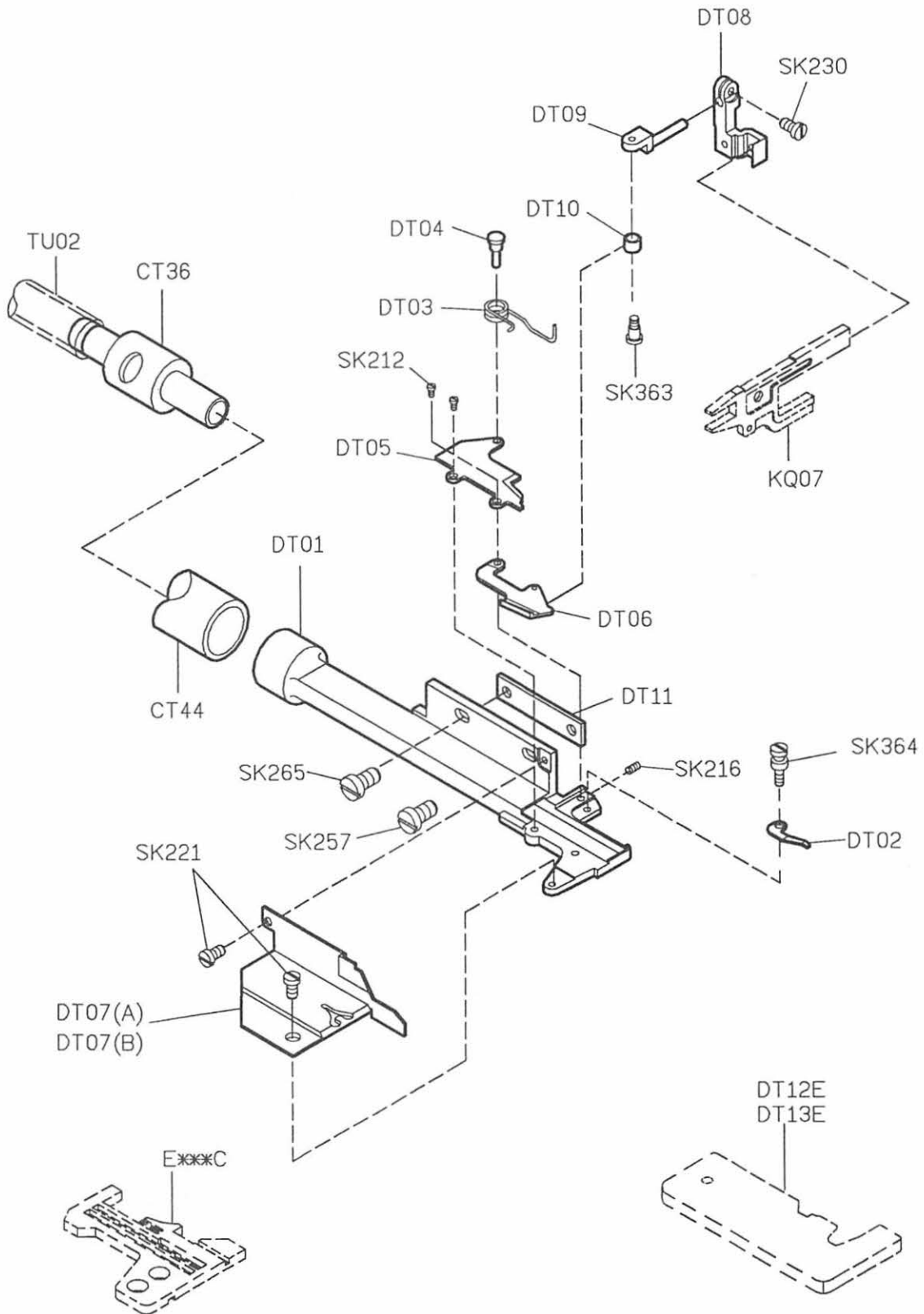


# CT PNEUMATIC CHAIN CUTTER

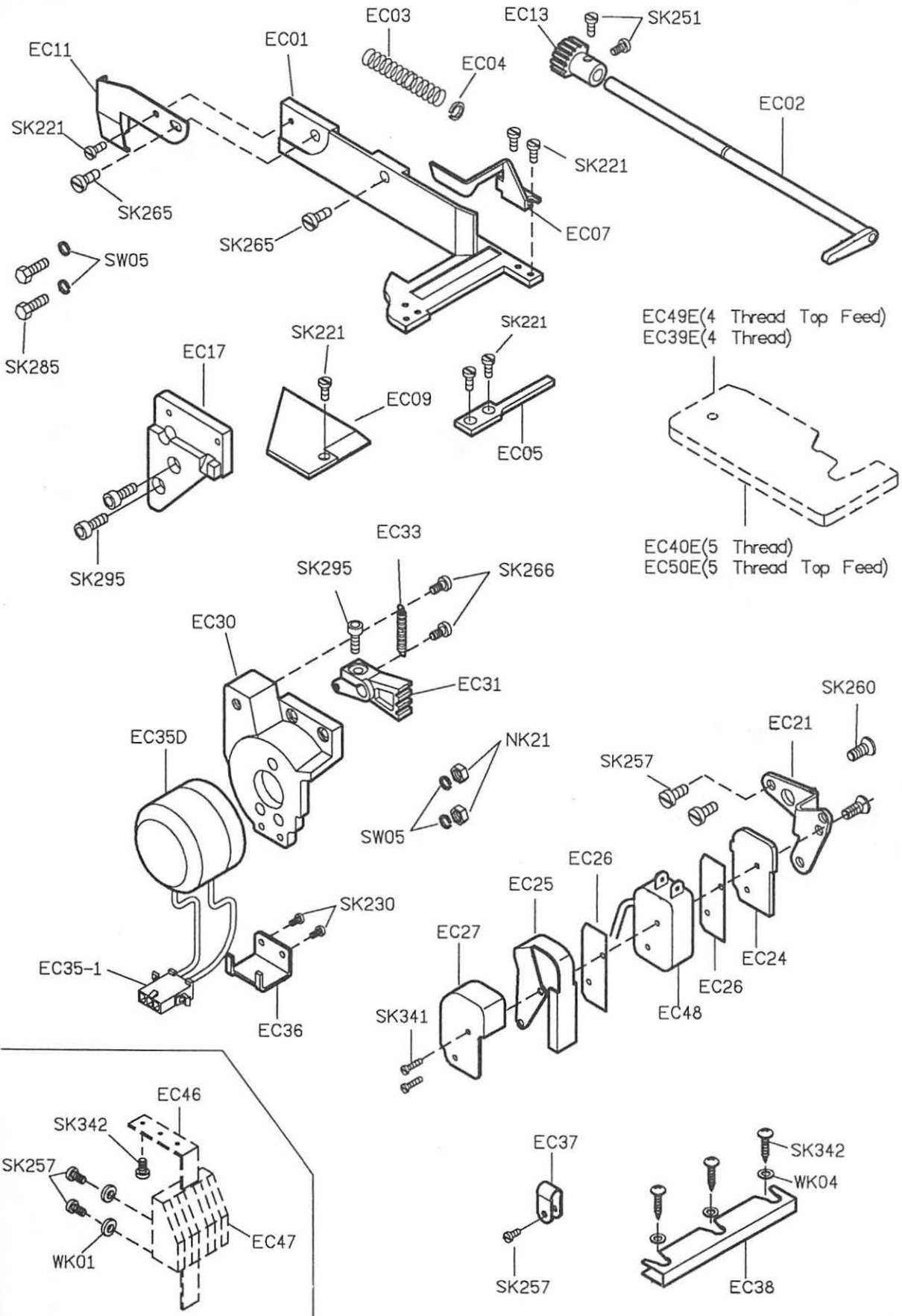




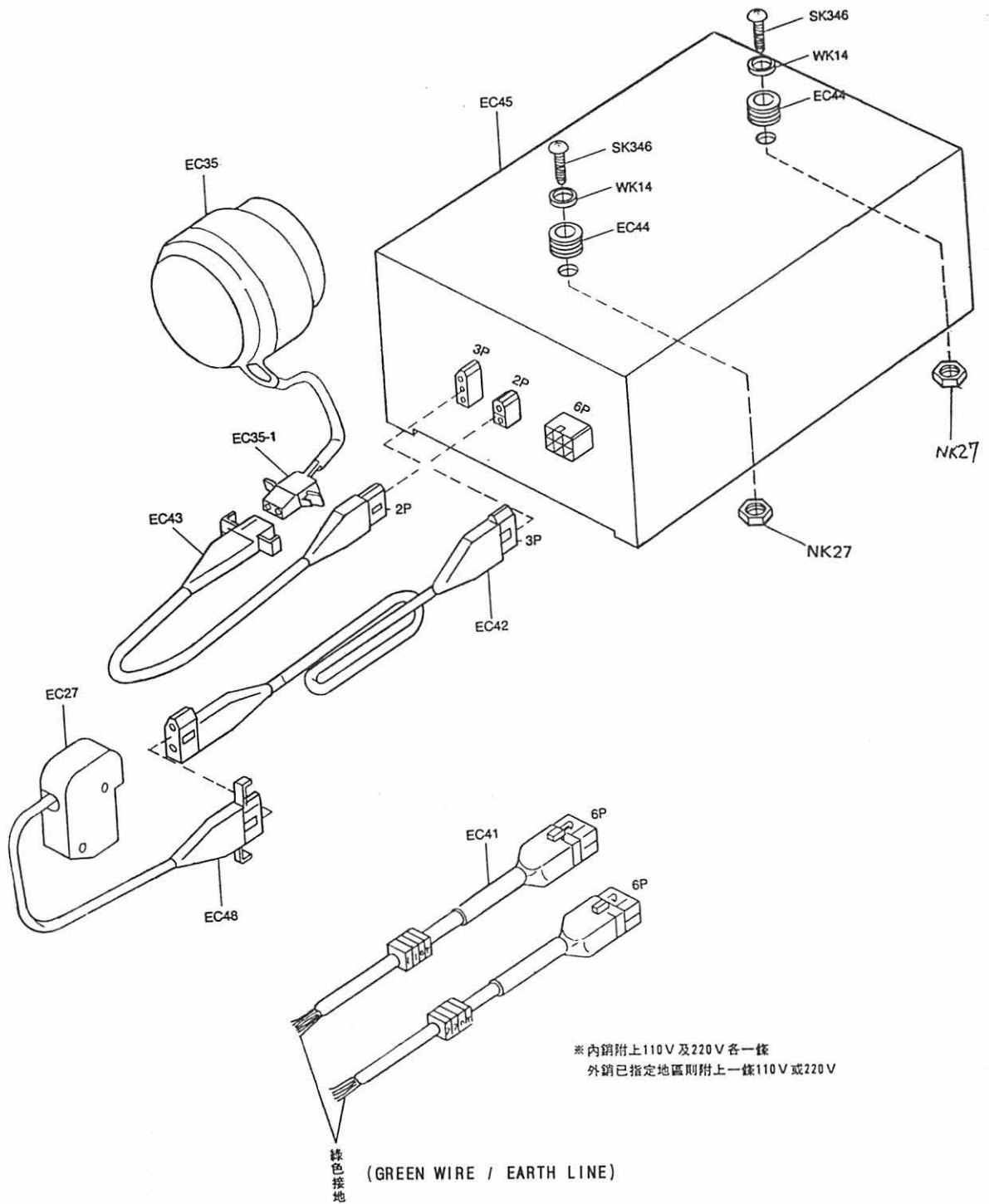
# DT PNEUMATIC CHAIN CUTTER FOR TOP FEED MACHINE



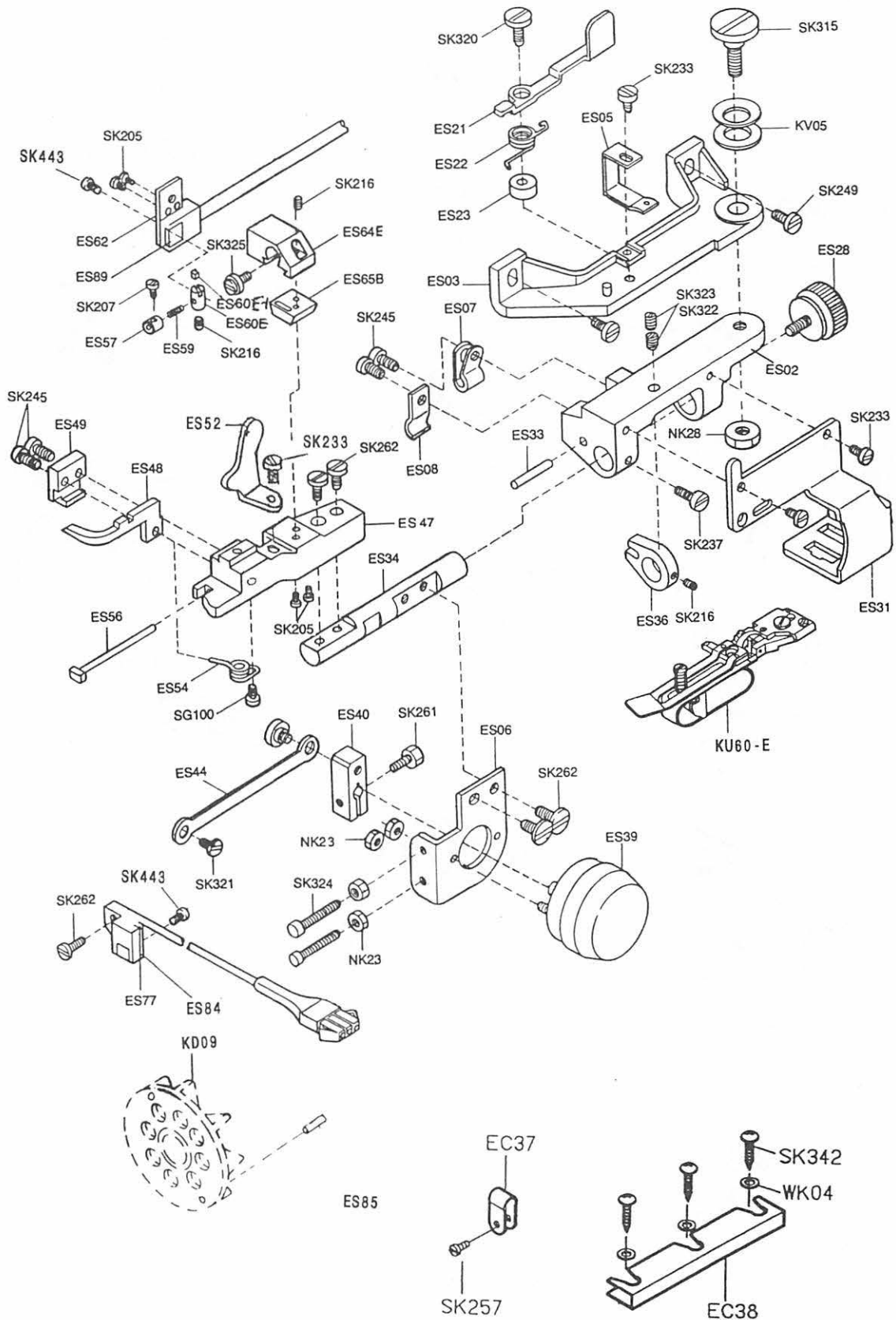
# EC ELECTRIC TAPE CUTTER



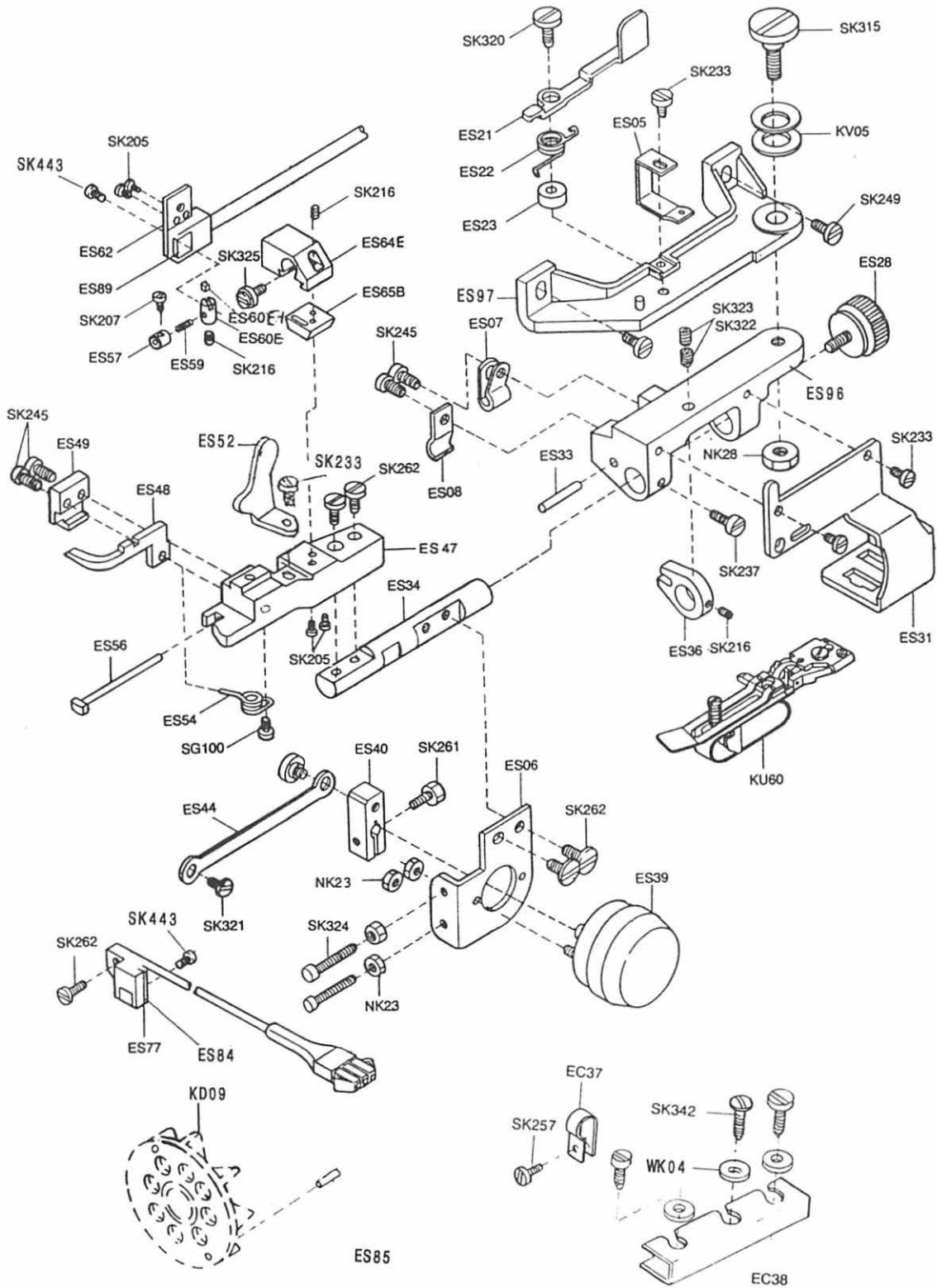
# EC ELECTRIC TAPE CUTTER CONTROL BOX



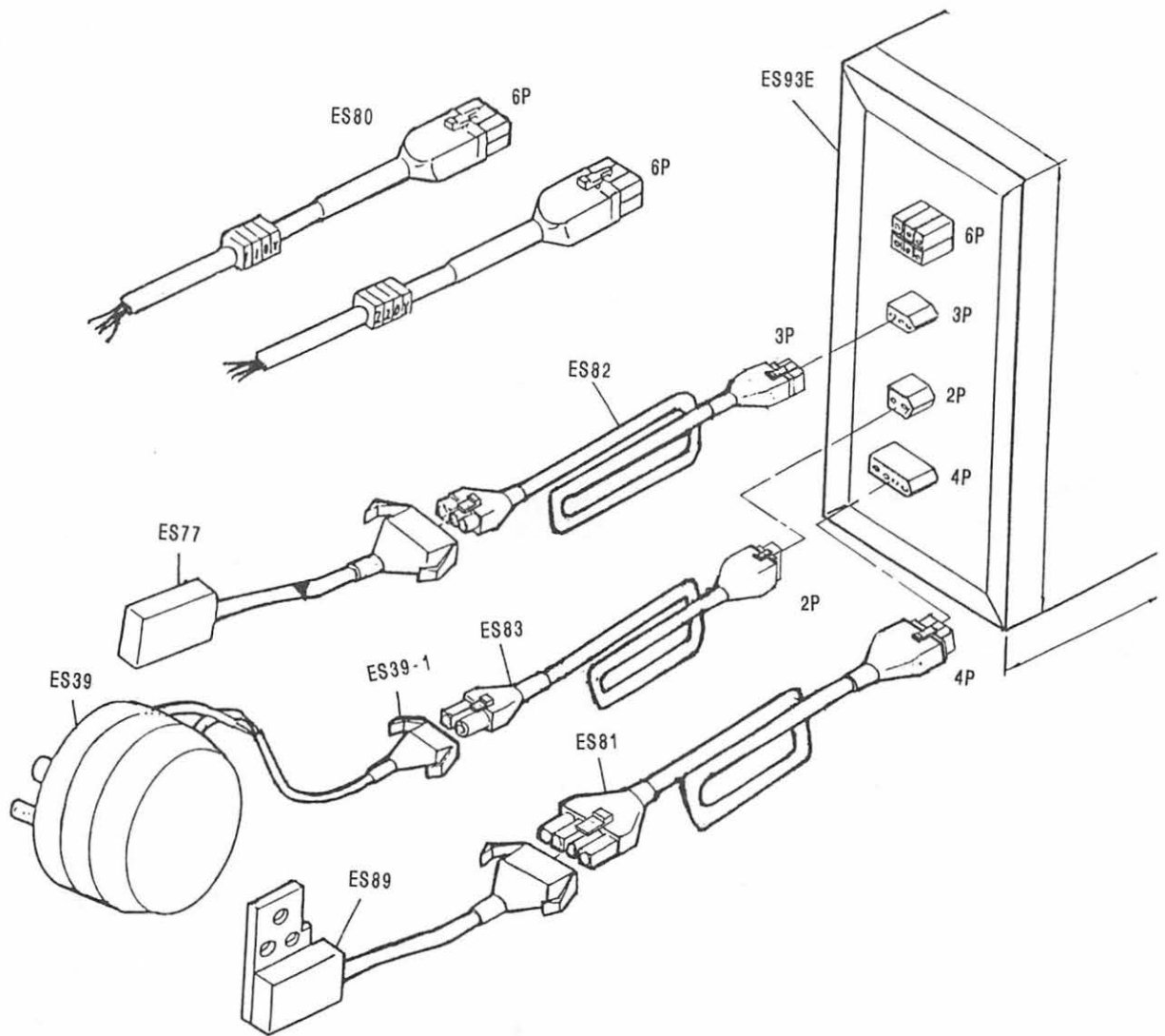
# ES ELECTRIC HEMMING DEVICE



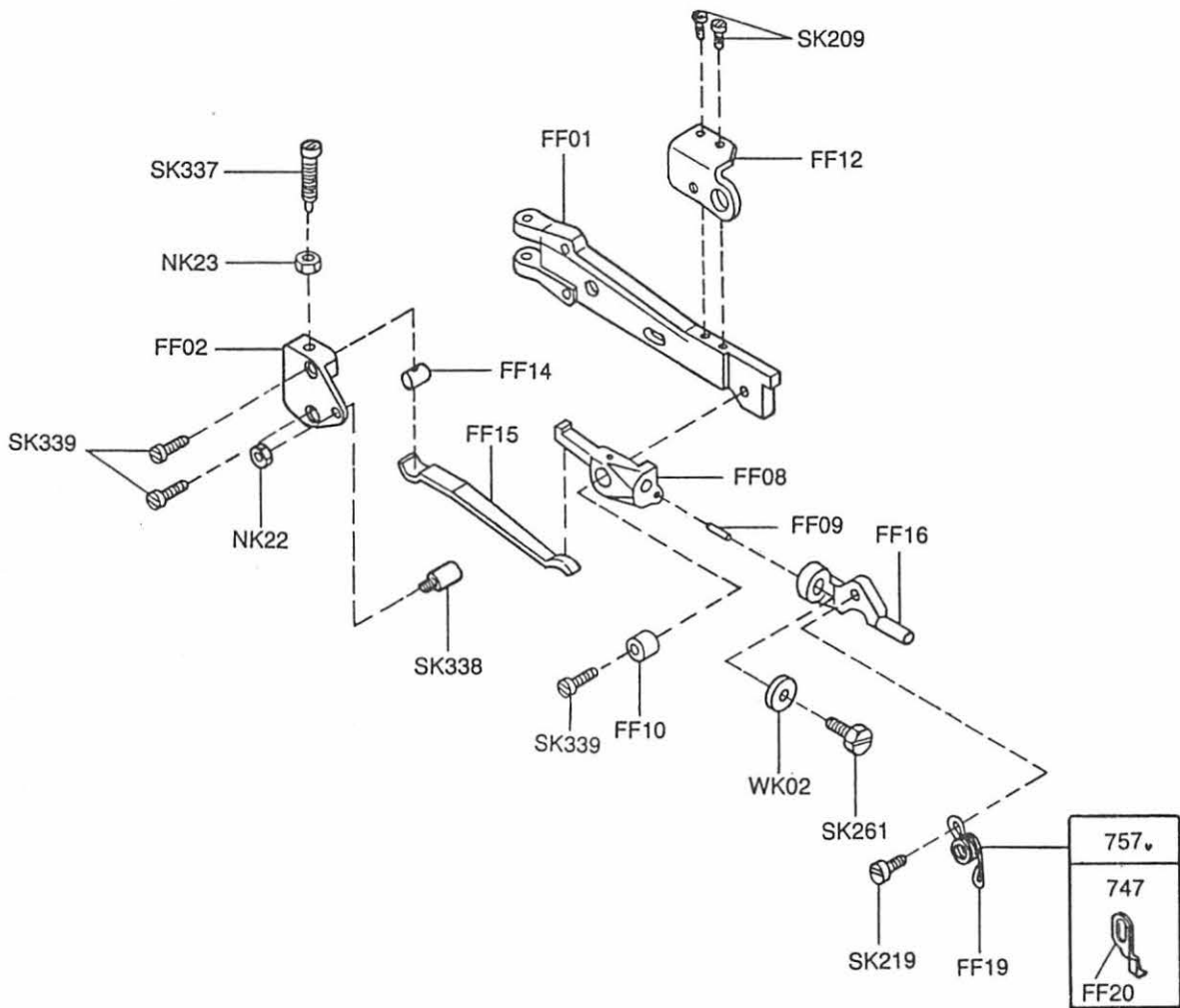
# ESS ELECTRIC HEMMING DEVICE FOR CYLINDER BED OVERLOCKER



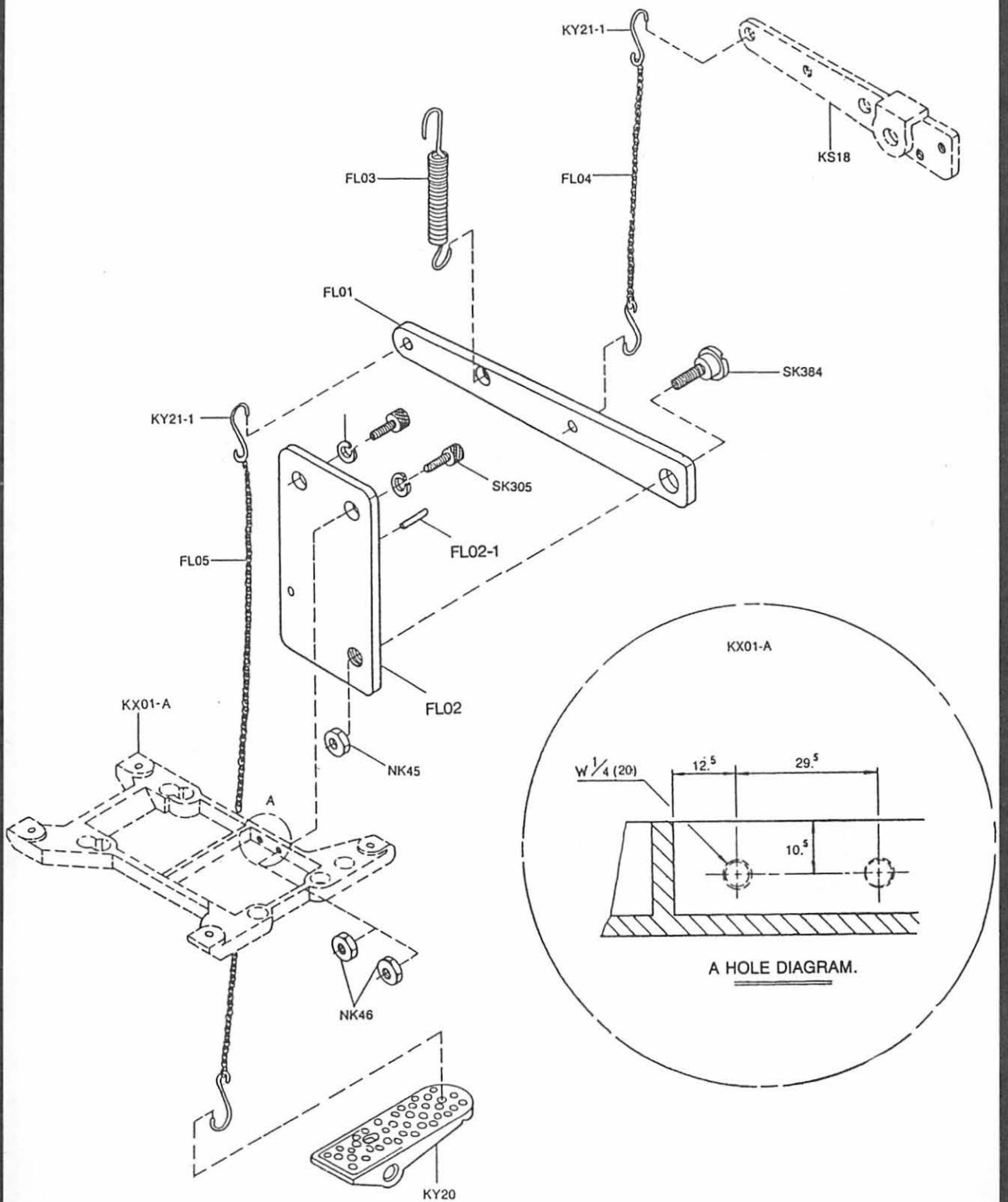
# ES / ESS ELECTRIC HEMMING DEVICE CONTROL BOX



# FF FLOATING PRESSER BAR

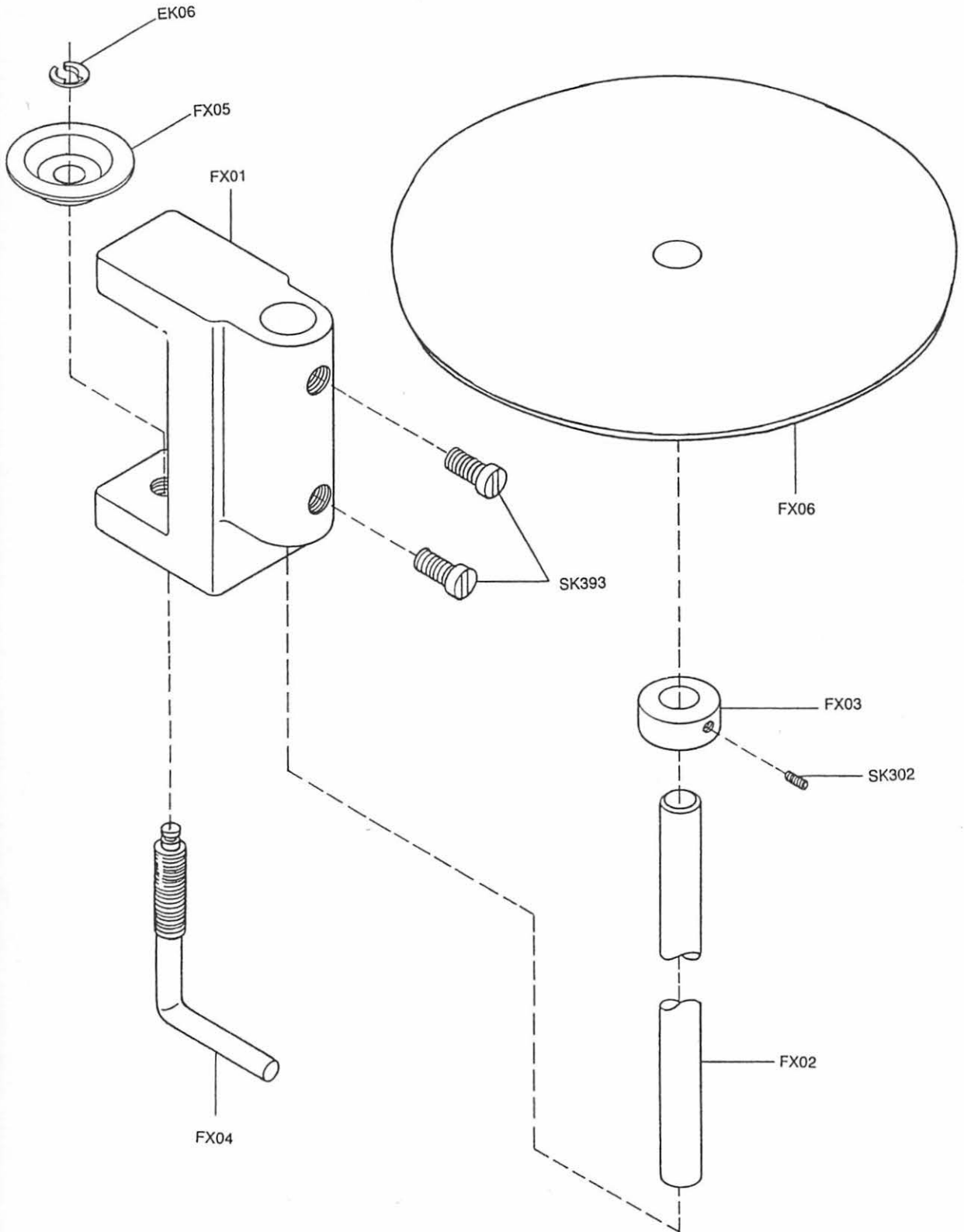


# FL PRESSER FOOT LIFT CONNECTOR

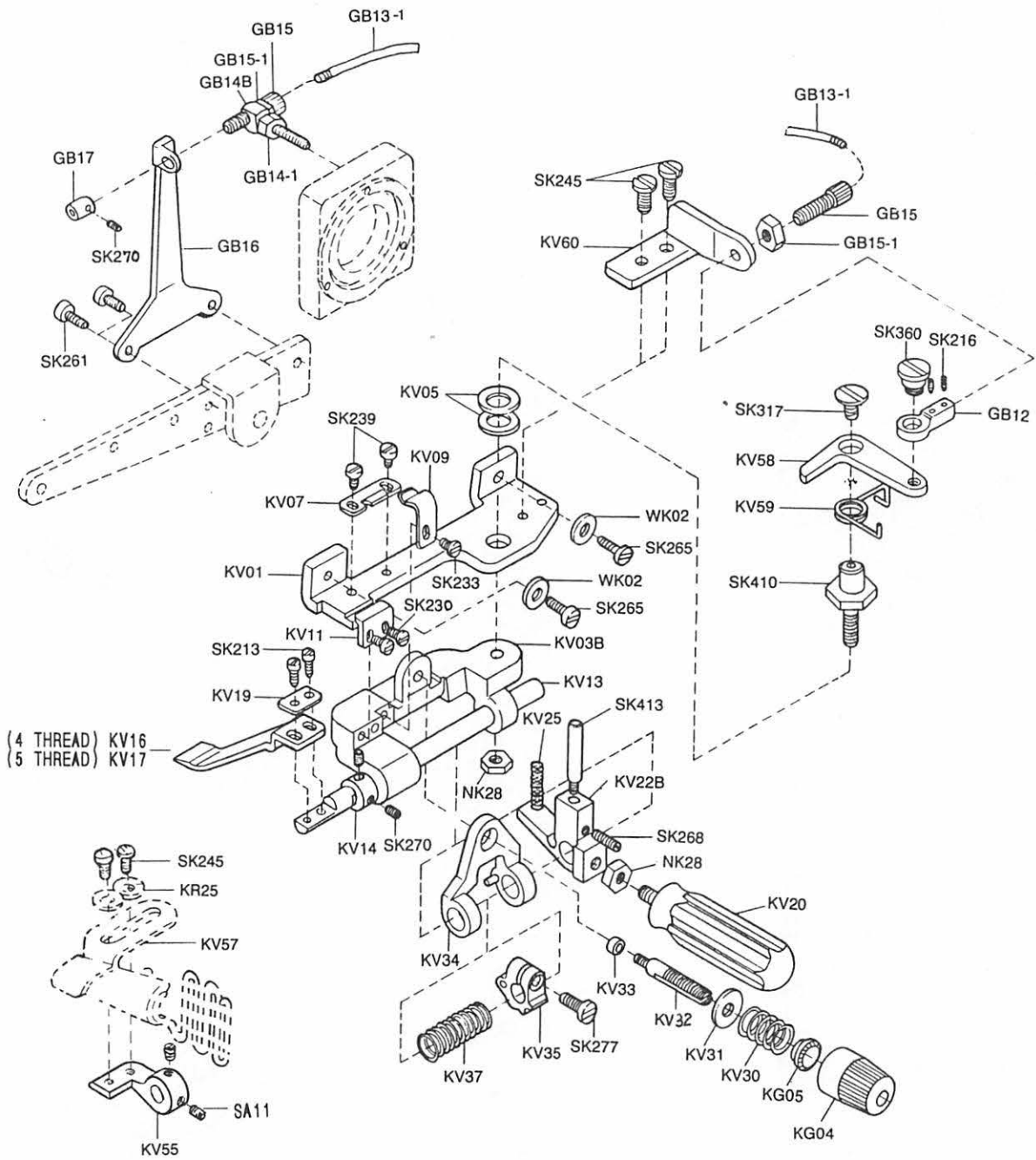




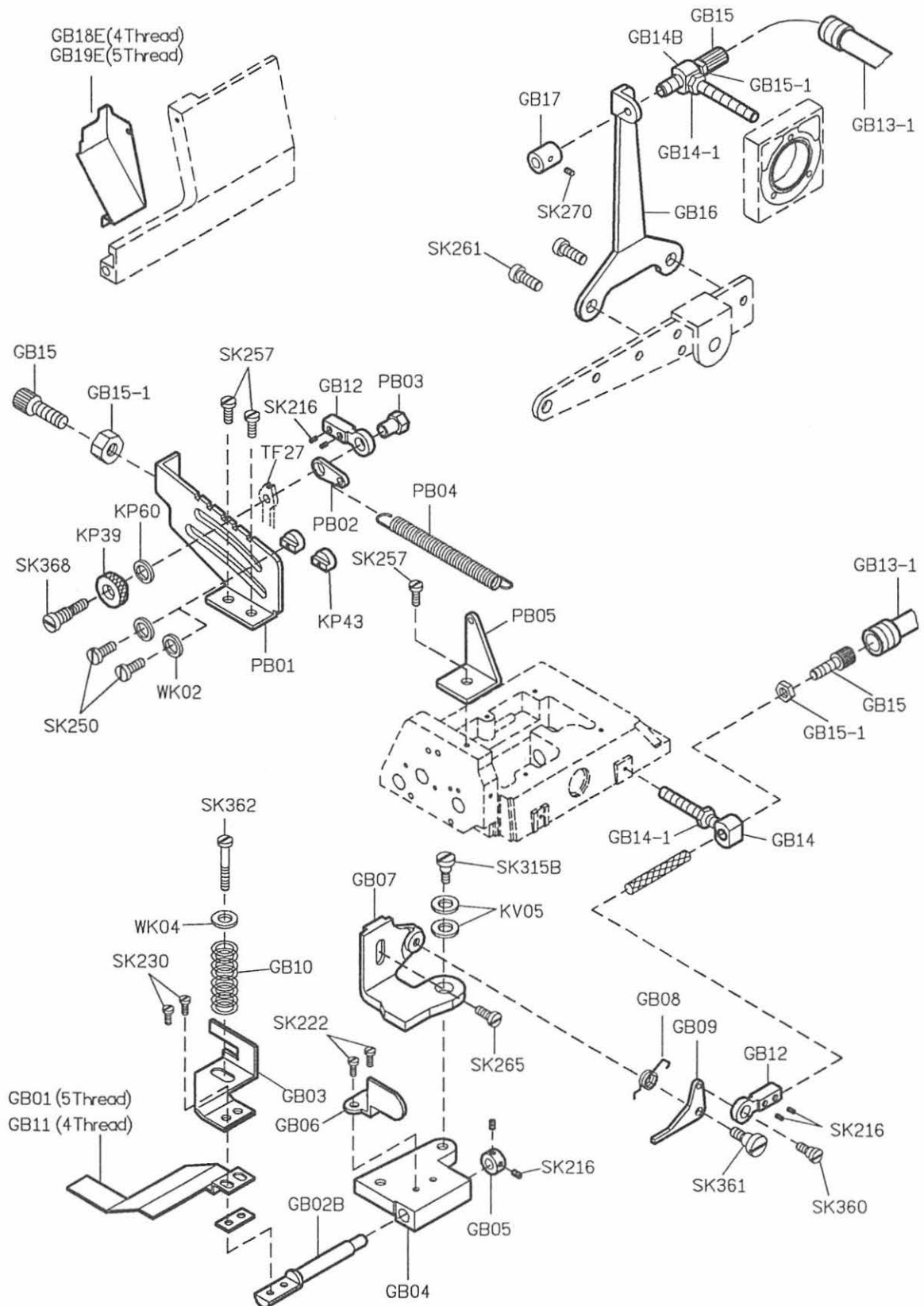
# FX TAPE HOLDER



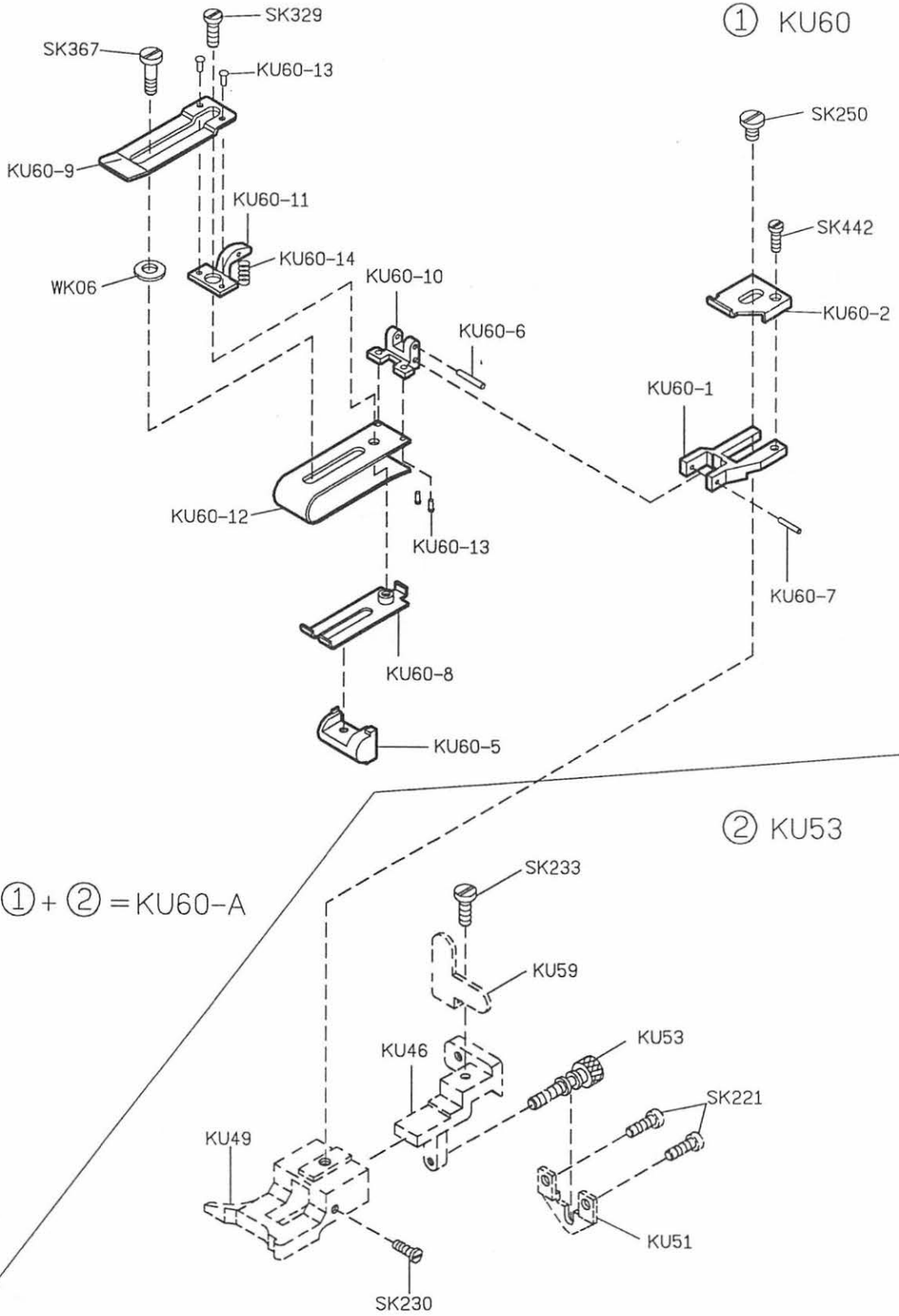
# GA GATHERING DEVICE



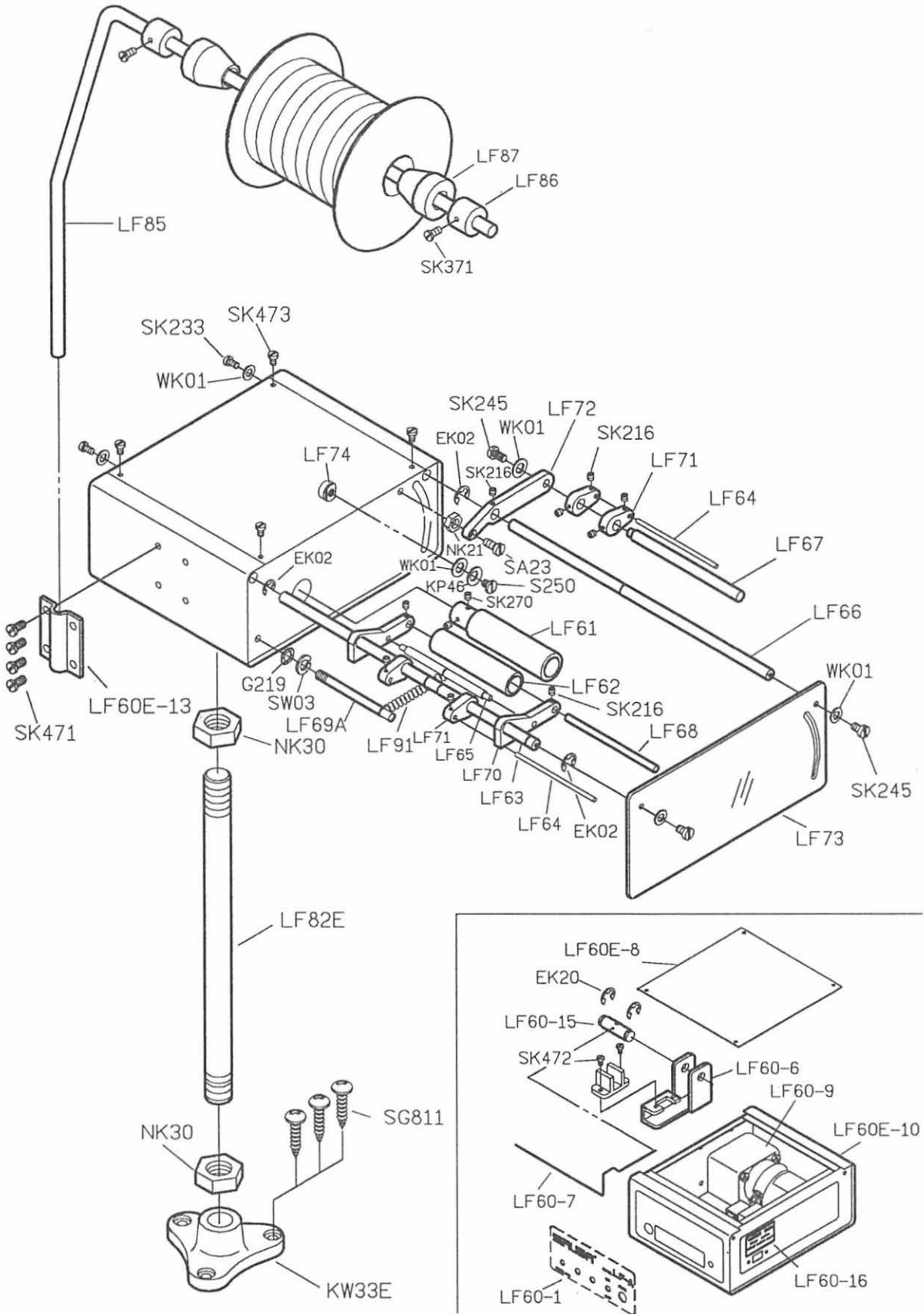
# GB GATHERING DEVICE FOR TOP FEED M/C



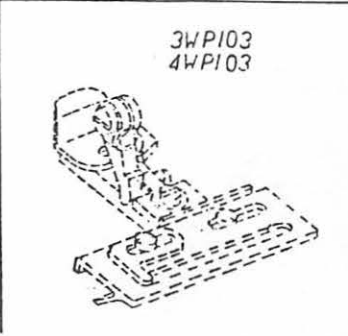
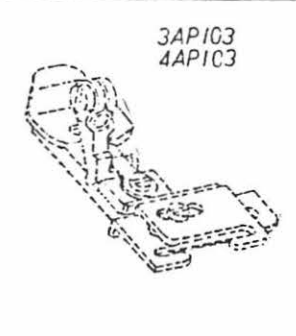
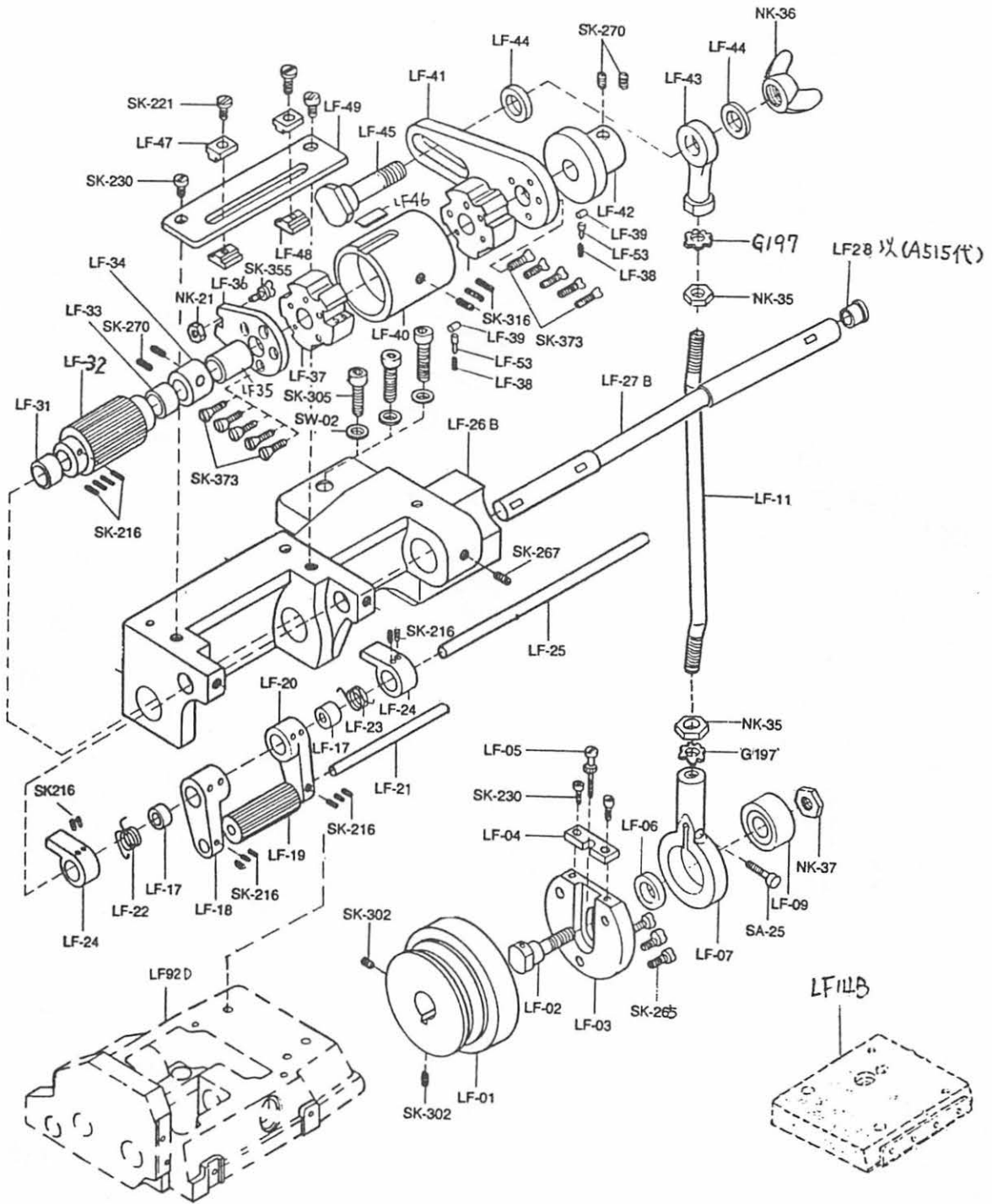
# KU60 - A HEMMING DEVICE



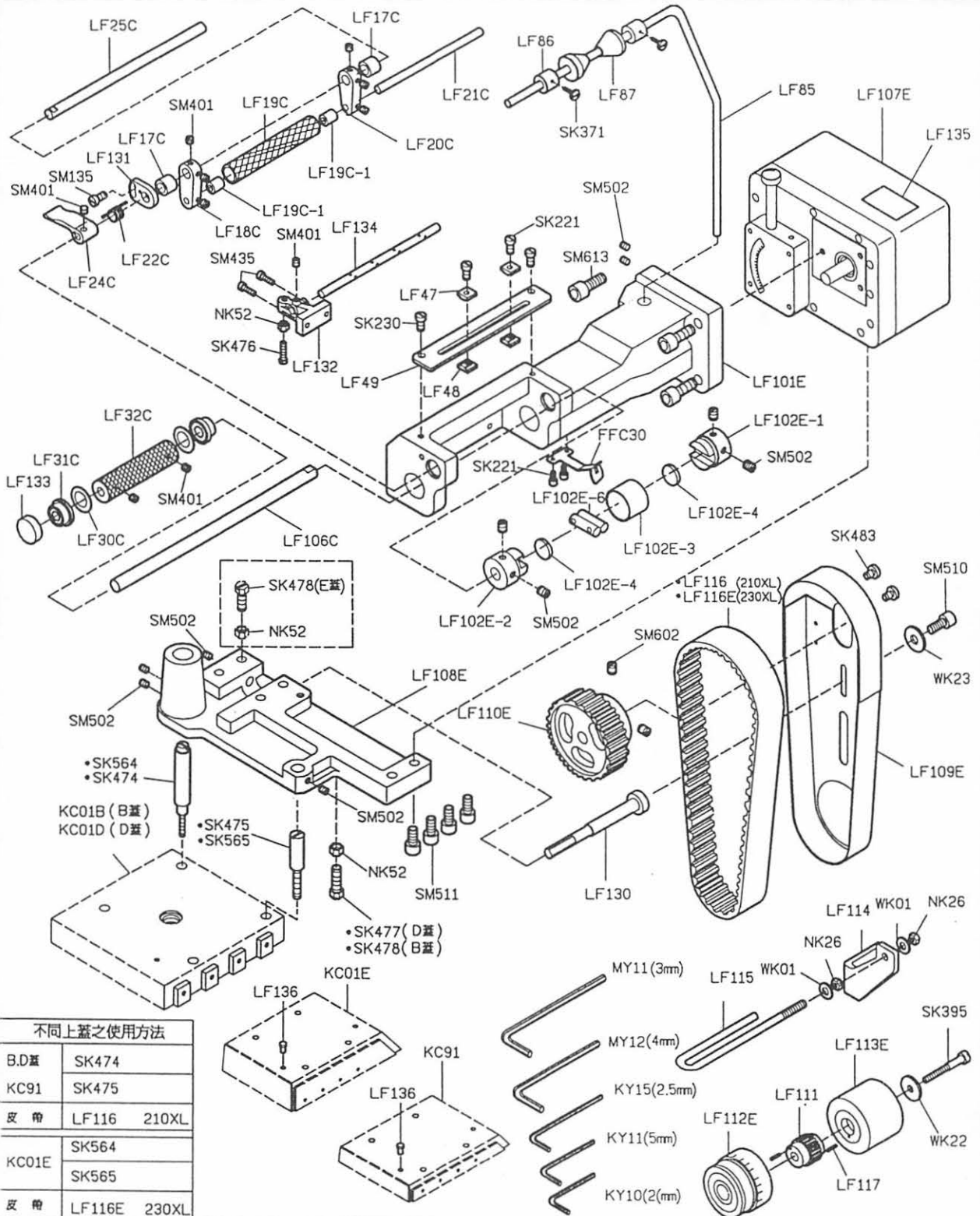
# LF-A ELECTRIC FEEDING DEVICE



# LF-B MECHANICAL FEEDING DEVICE

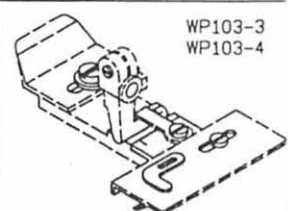
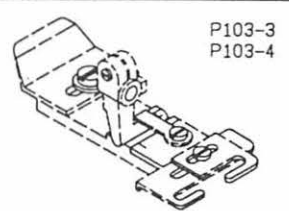
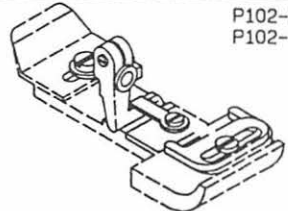
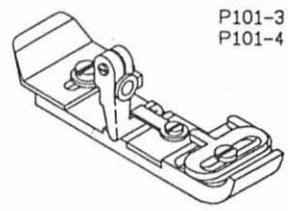


# LFC-2 MECHANICAL FEEDING DEVICE

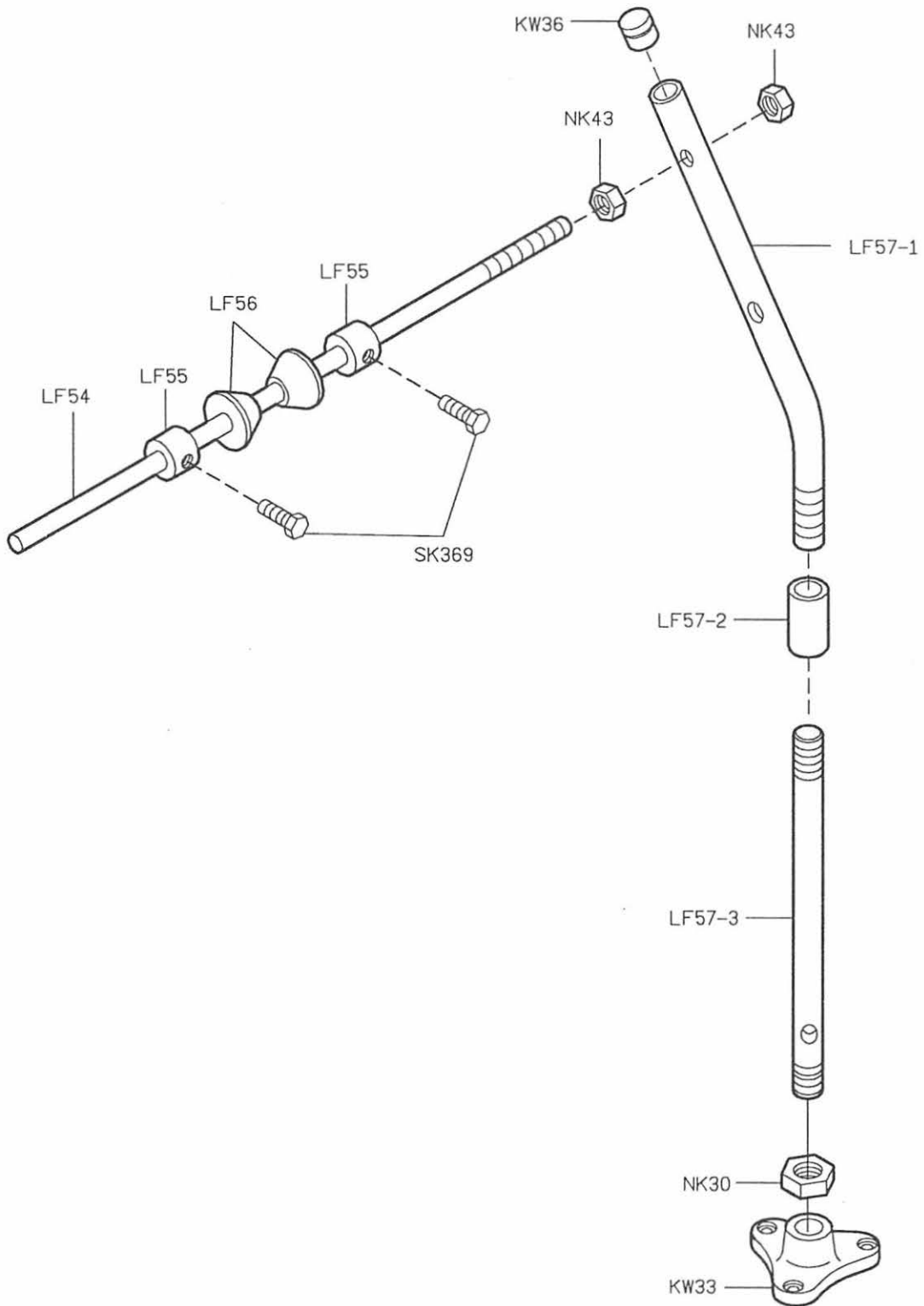


不同上蓋之使用方法

B.D蓋	SK474
KC91	SK475
皮帶	LF116 210XL
KC01E	SK564
	SK565
皮帶	LF116E 230XL

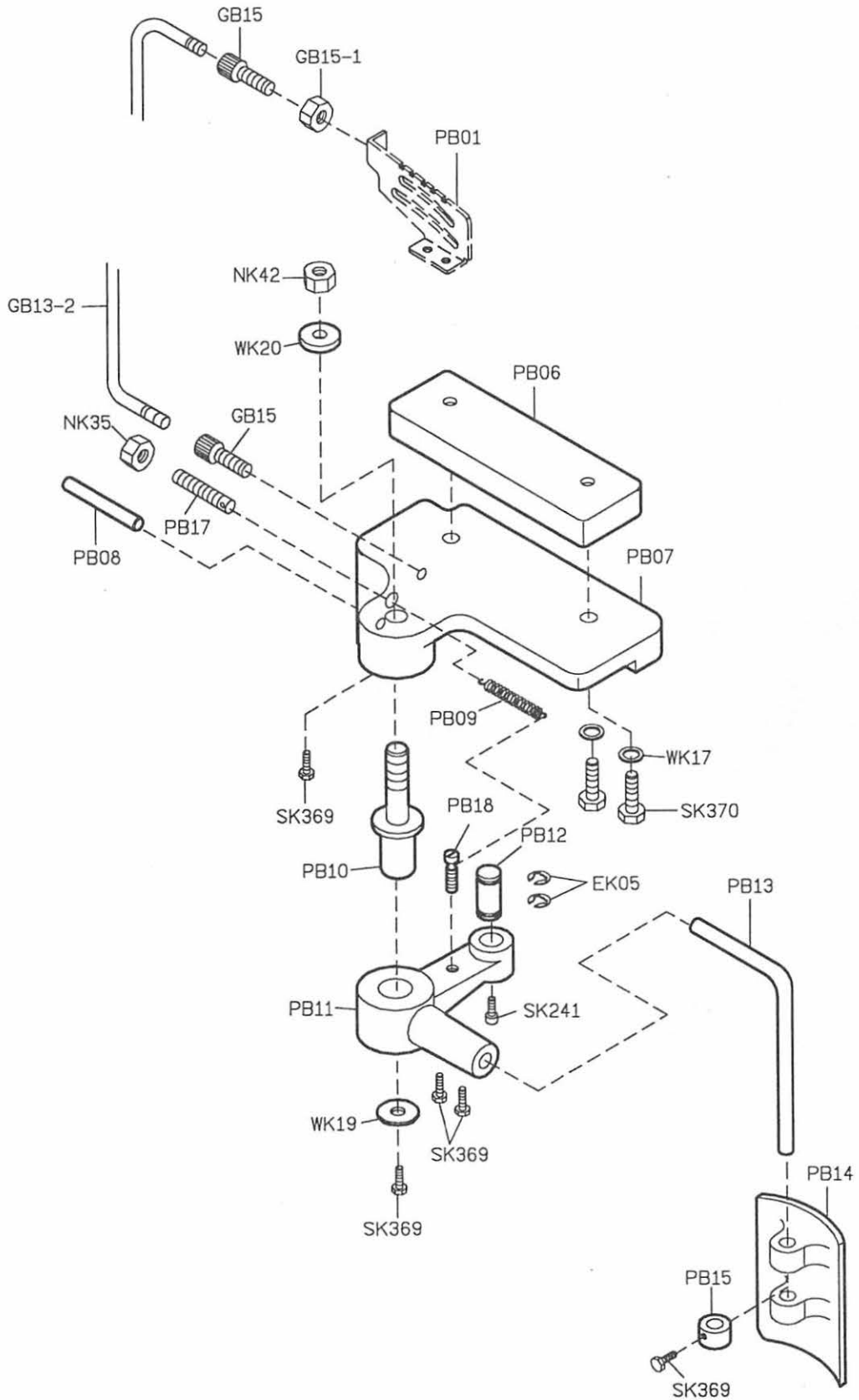


# LS ELASTIC HOLDING STAND

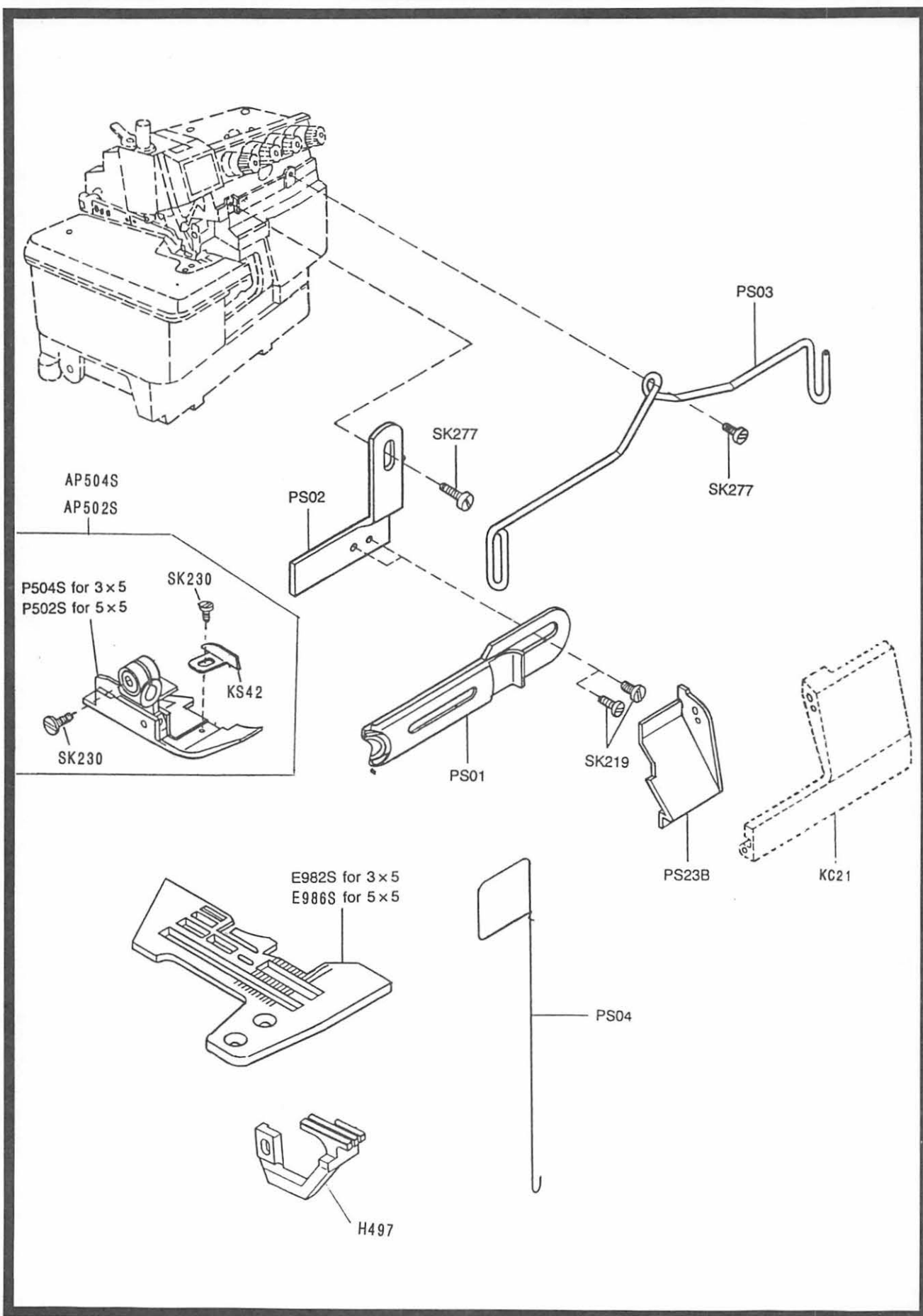




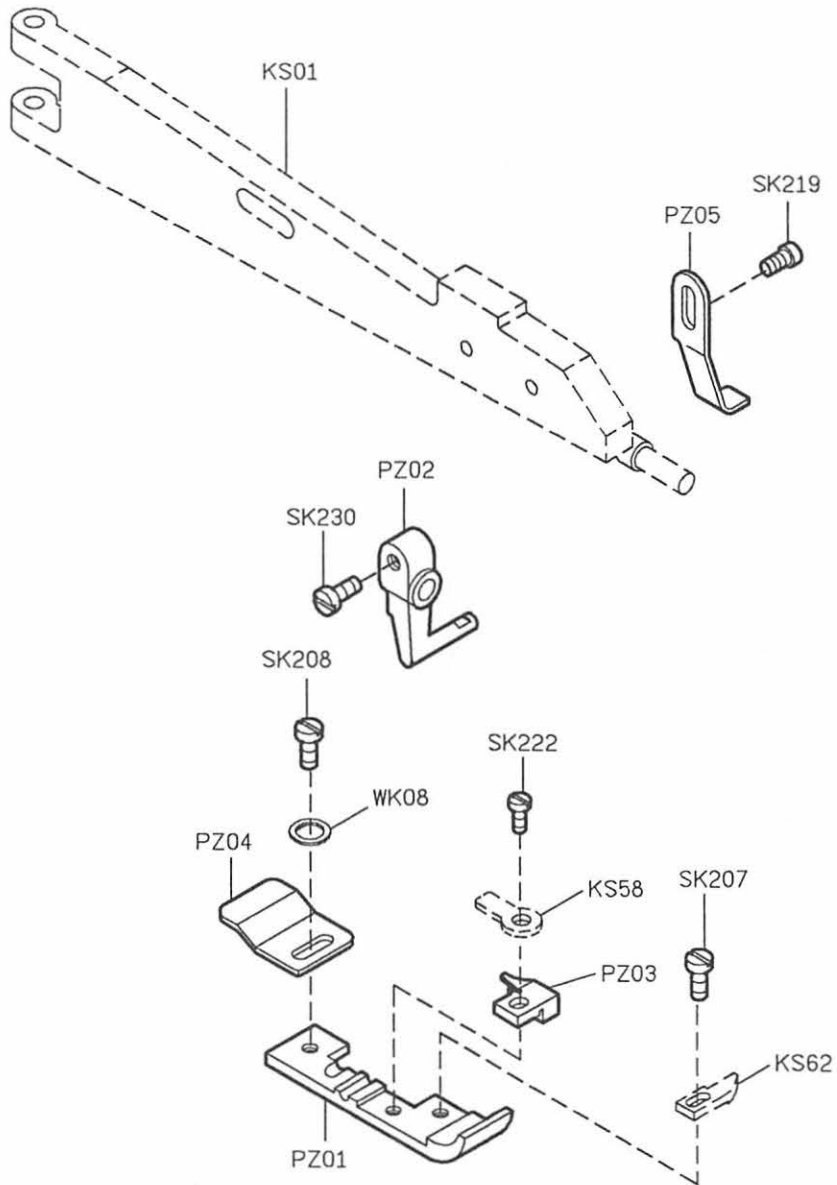
# PB KNEE CONTROLLER FOR GB GATHERING DEVICE



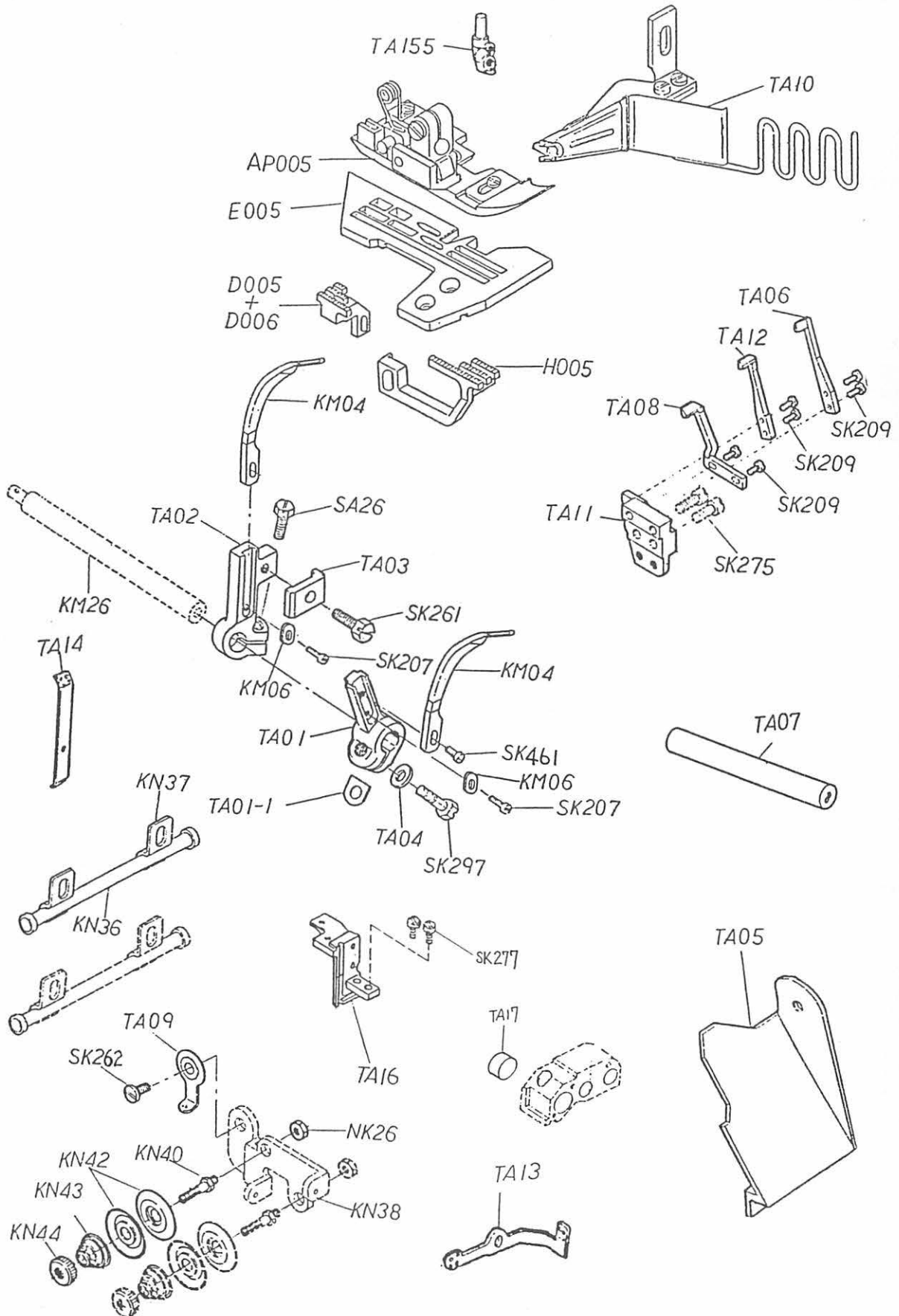
# PS POCKET SEWER



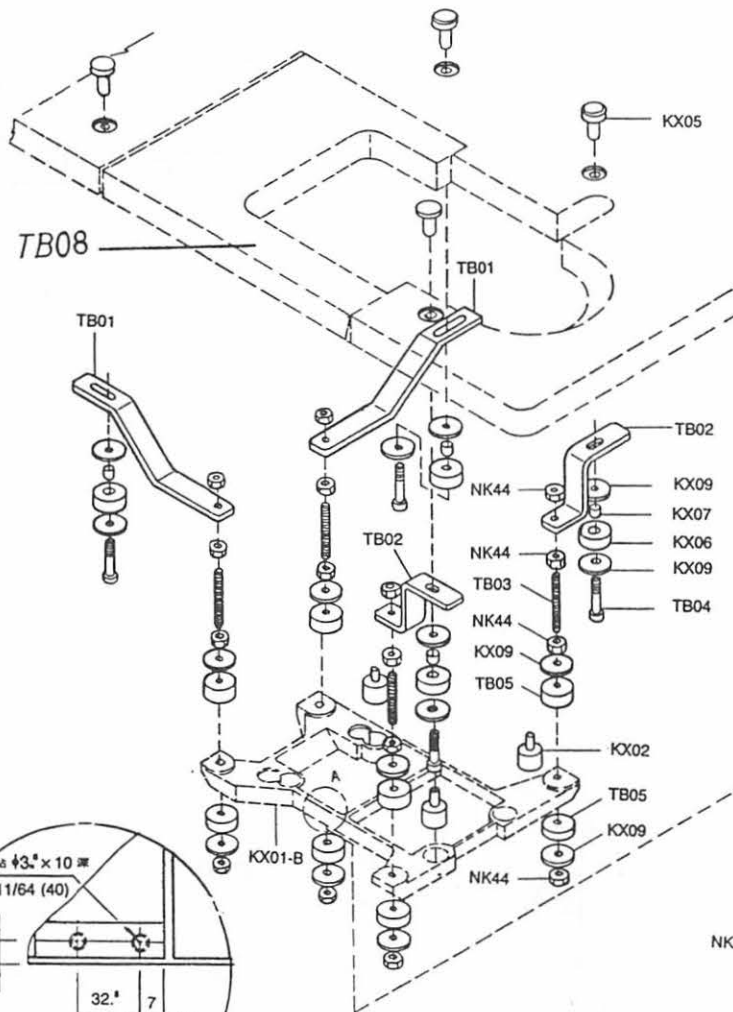
# PZ ZIPPER SEWING DEVICE



# TA POCKET BINDING DEVICE

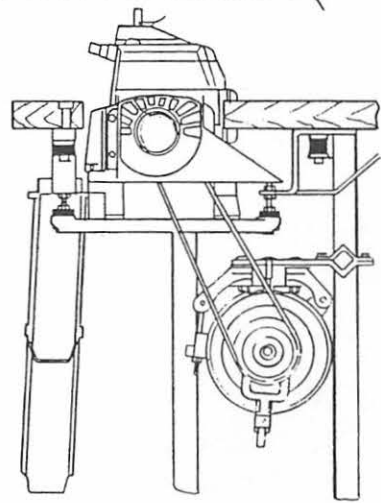
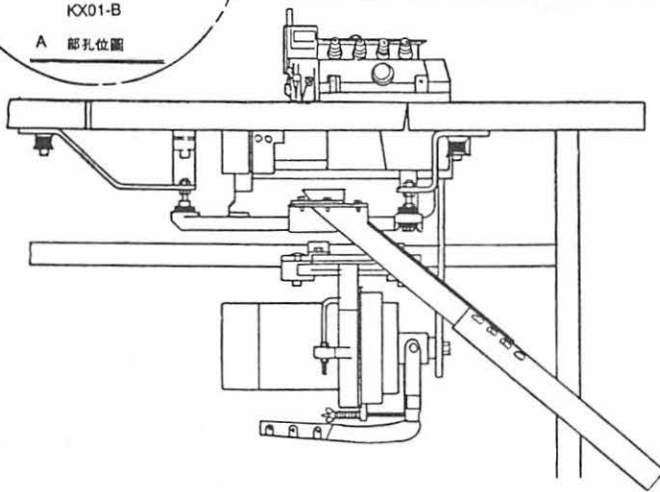
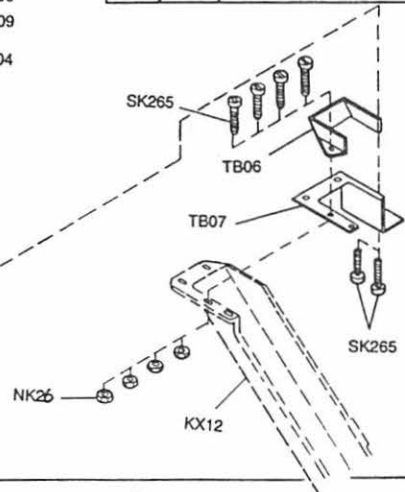
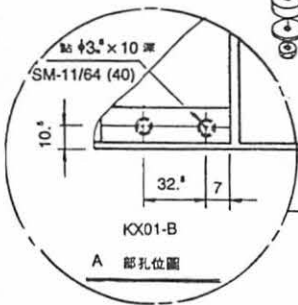


# TB FULLY SUBMERGED HOLDING BRACKET

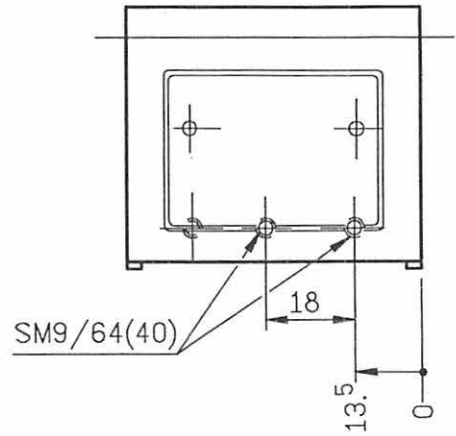
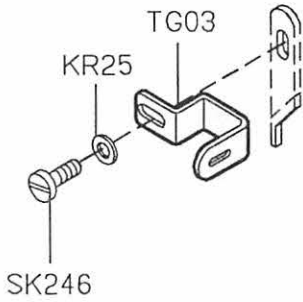


Thickness of Machine table	Dimension 'a'
50mm	19mm
45mm	14mm
40mm	9mm
35mm	4mm

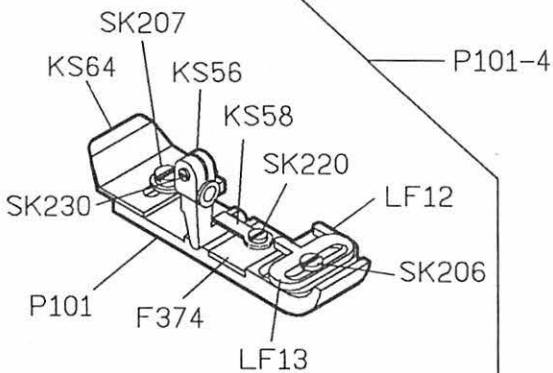
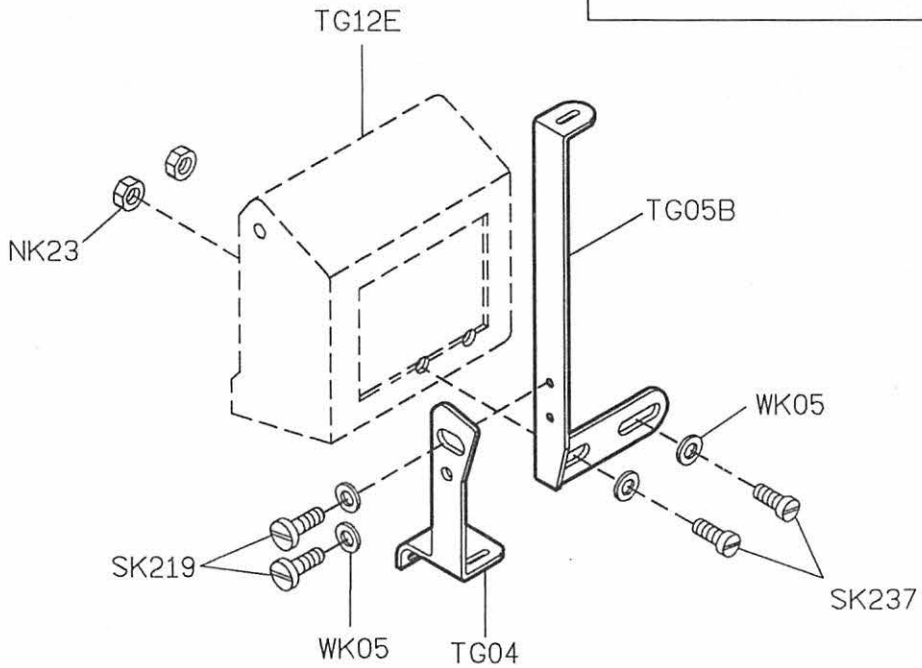
Surface of table top



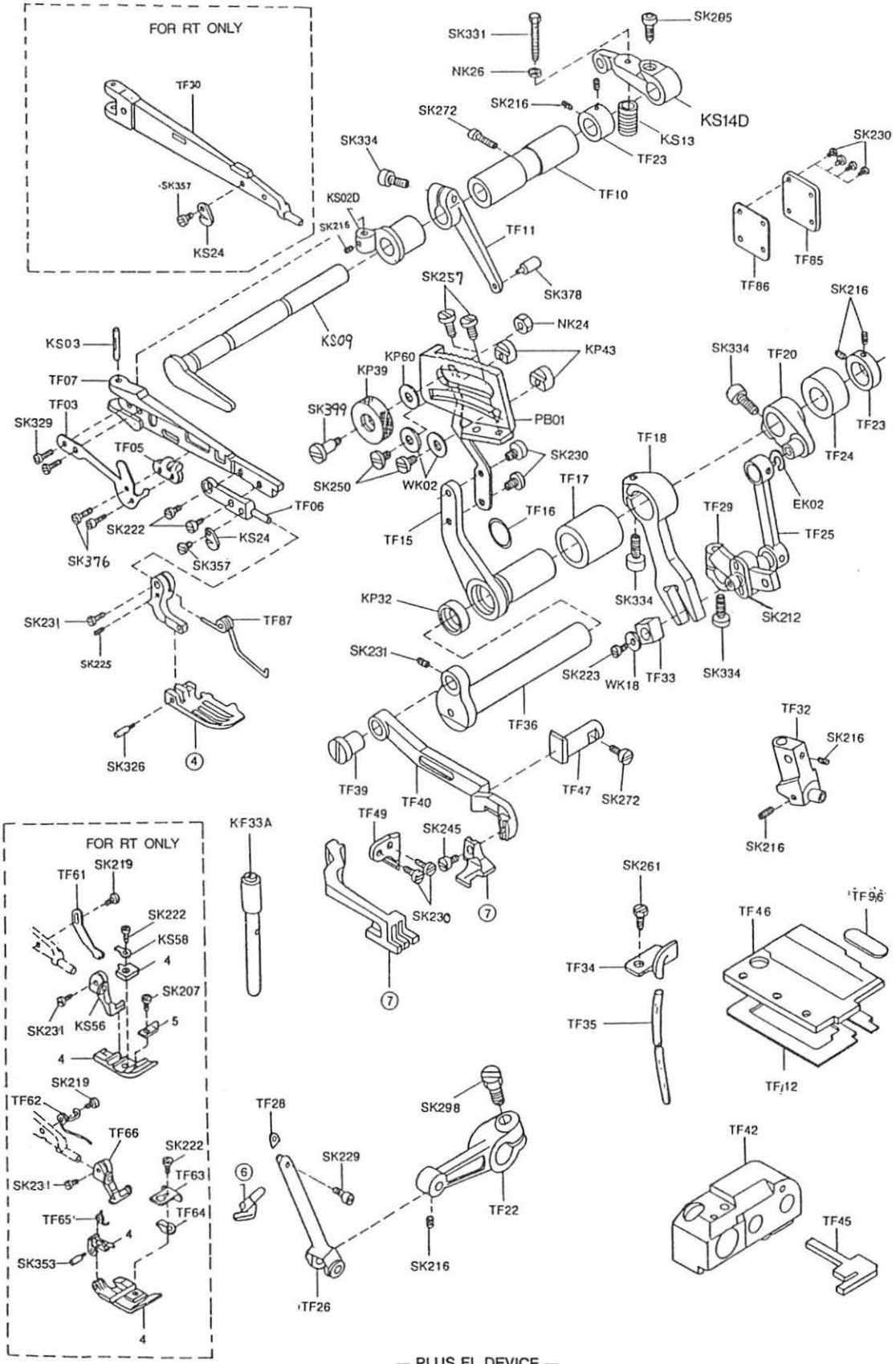
# TG TAPE GUIDE



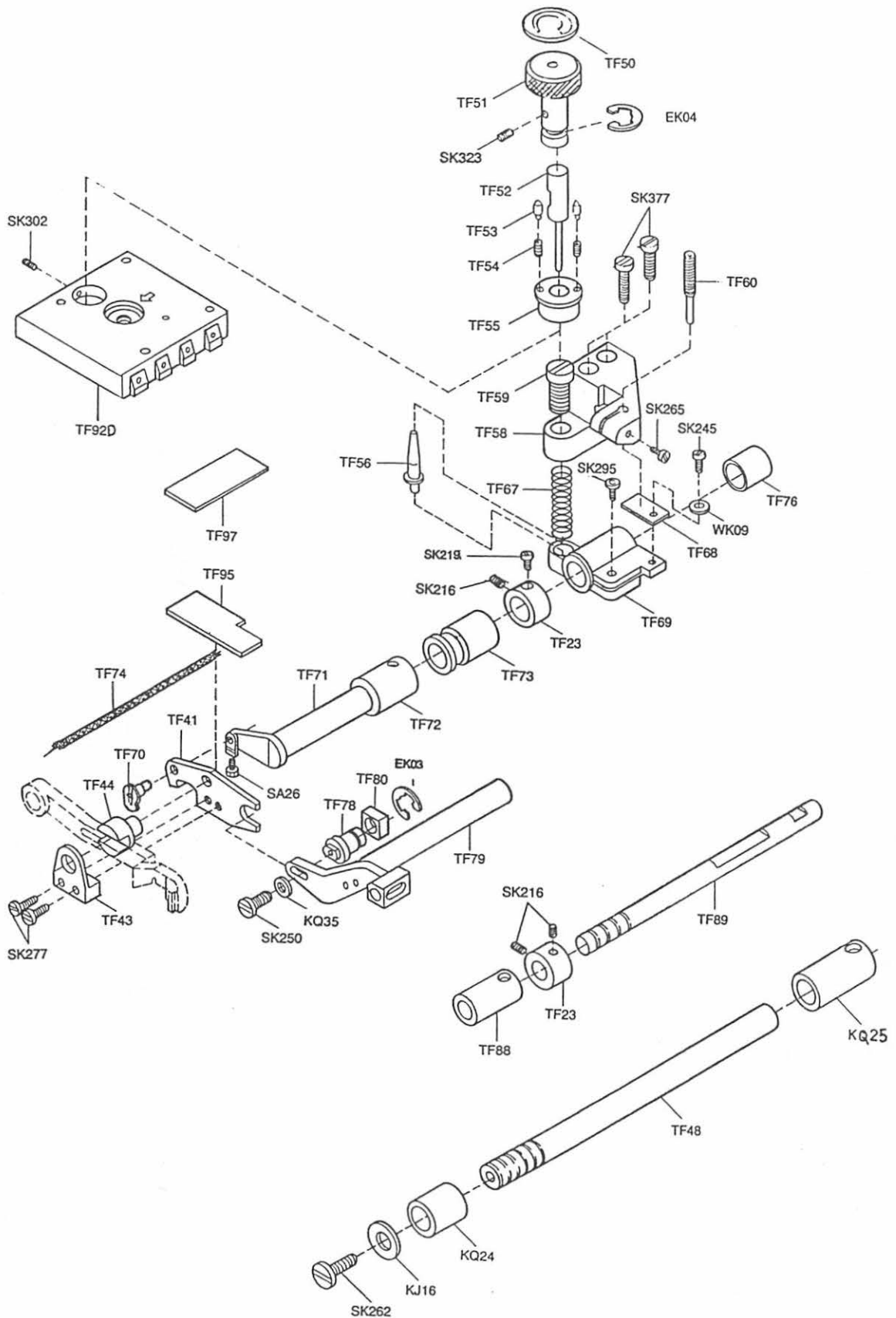
TG12E HOLE DIAGRAM



# TOP FEED MECHANISM

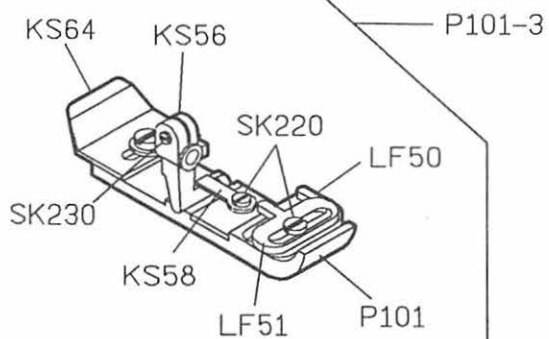
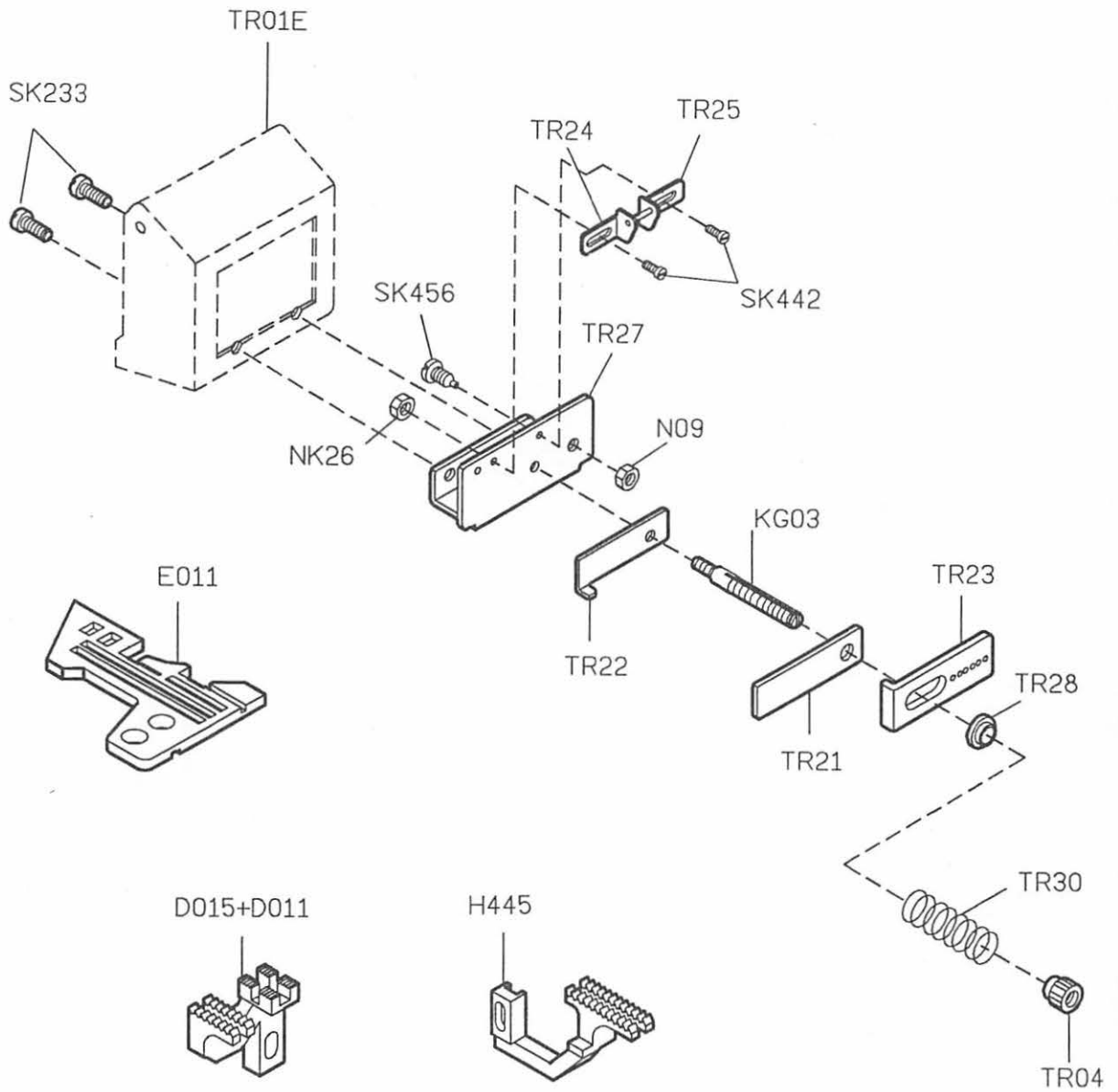


# TOP FEED MECHANISM

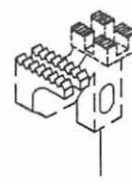




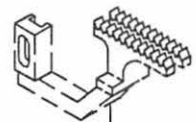
# TR ELASTIC CONTROLLER FOR SHOWER CAP



When stitch thin cloth are used.

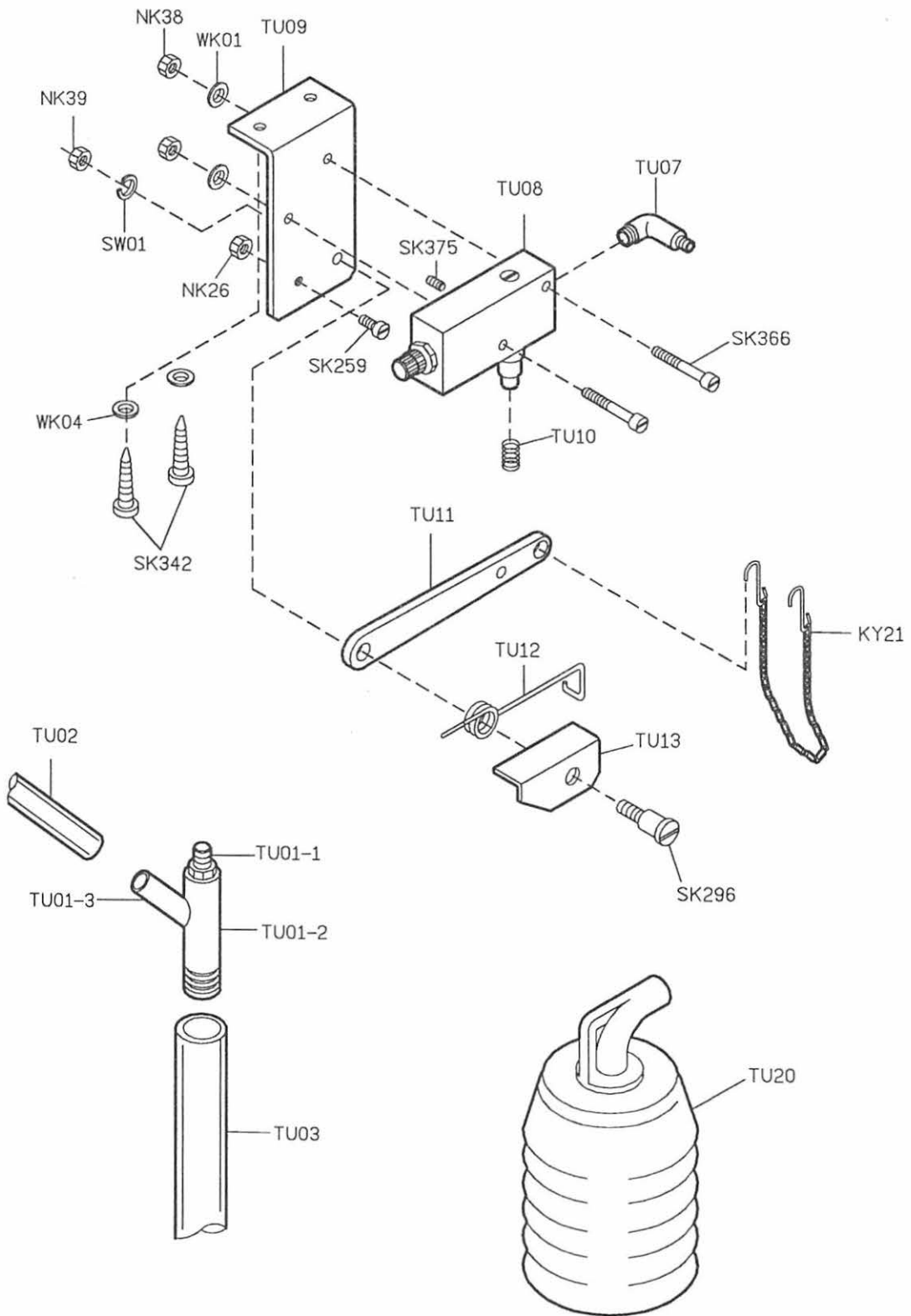


D007+D011

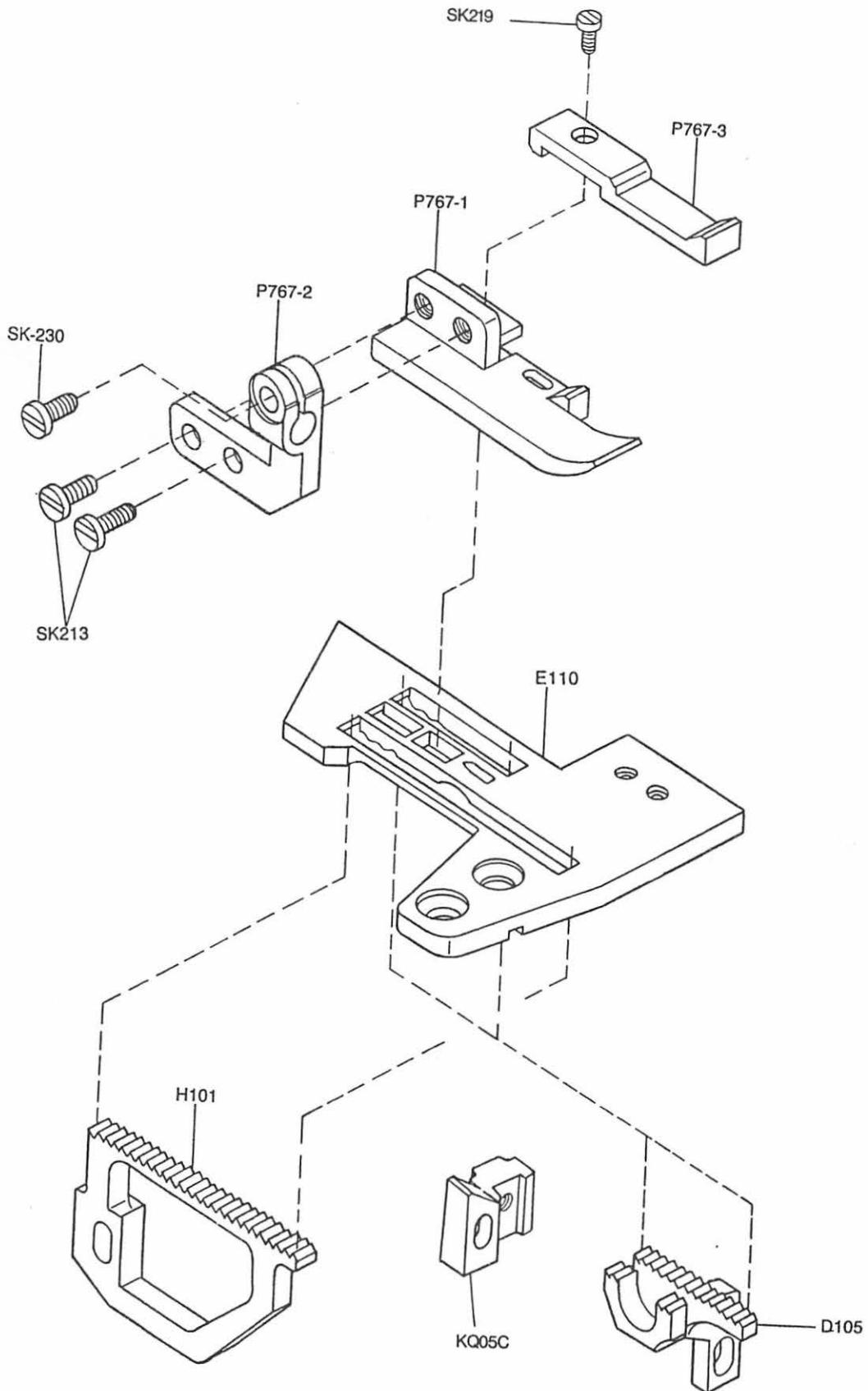


H007

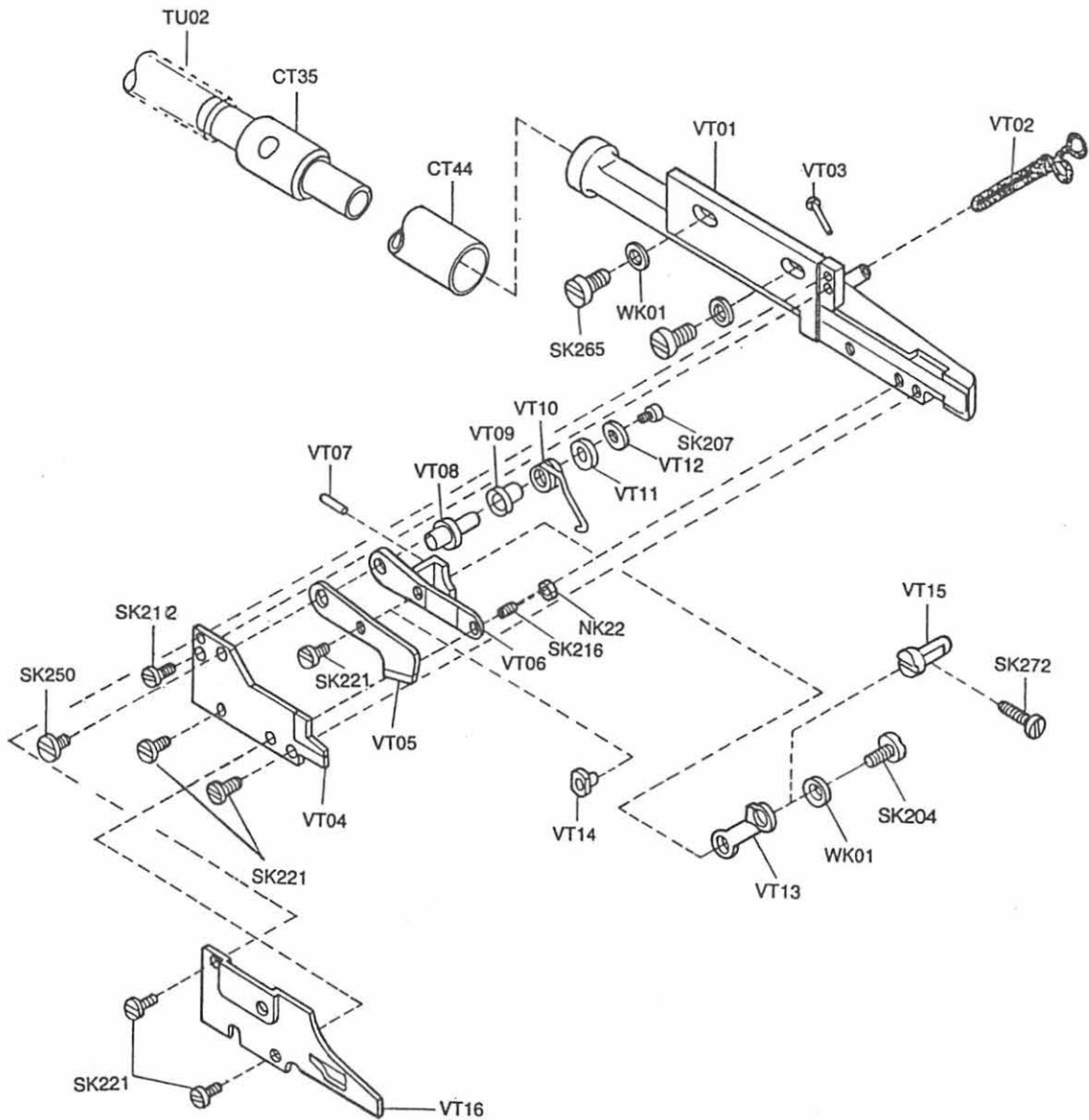
# TU VENTURI DEVICE



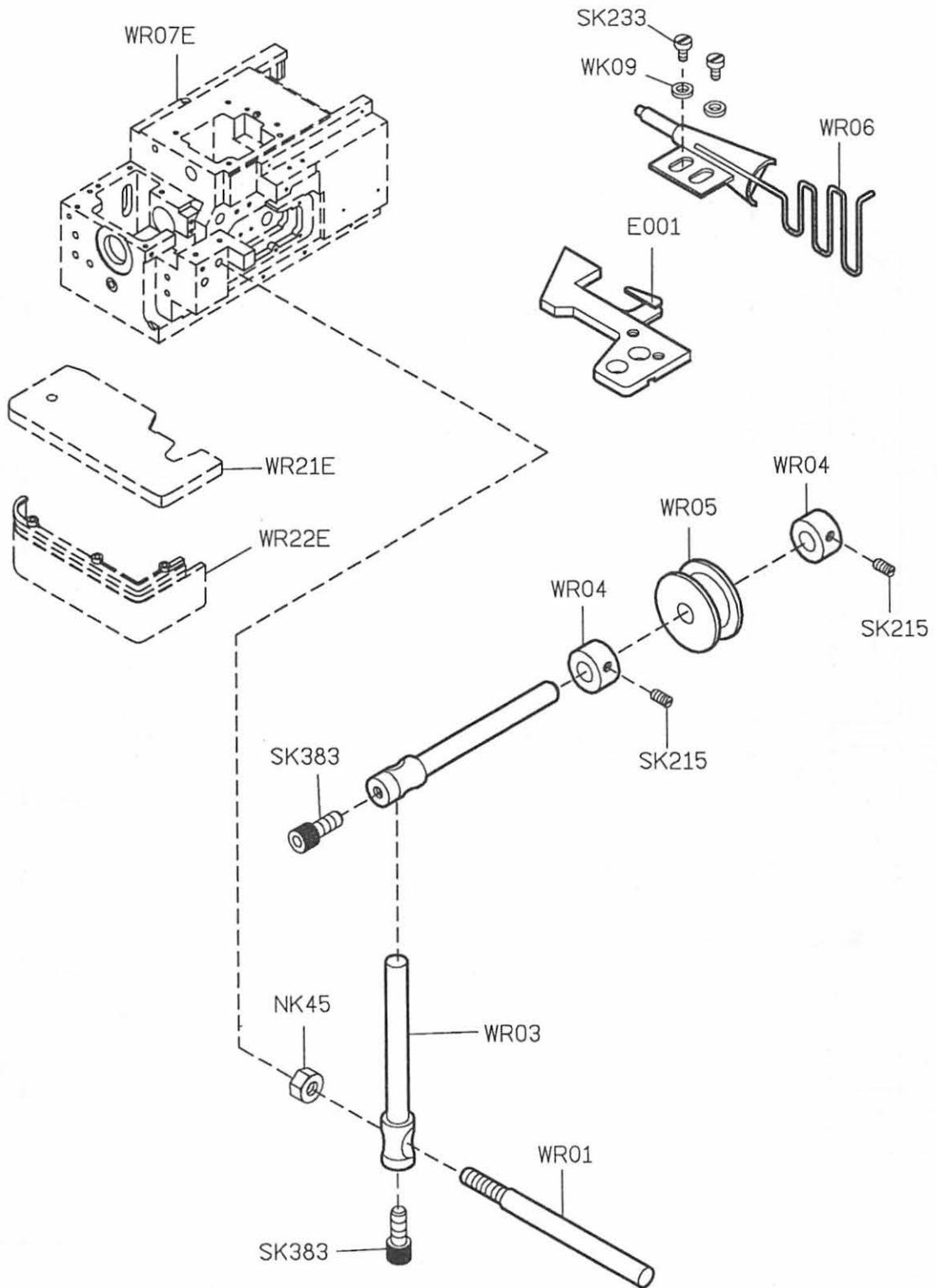
# TW GAUGE FOR SEWING TOWELS



# VT PNEUMATIC CHAIN CUTTER

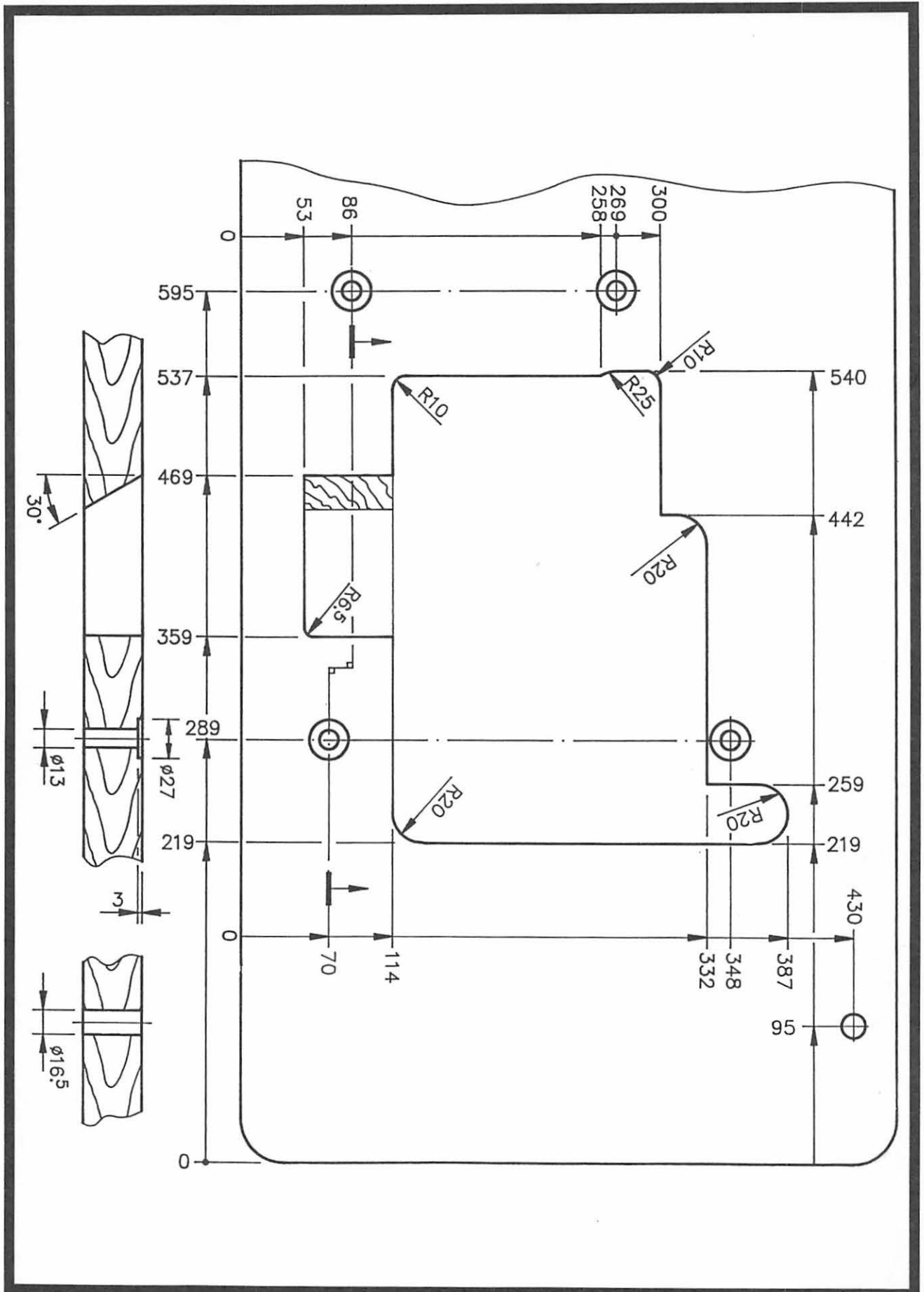


# WR SPAGHETTI DEVICE

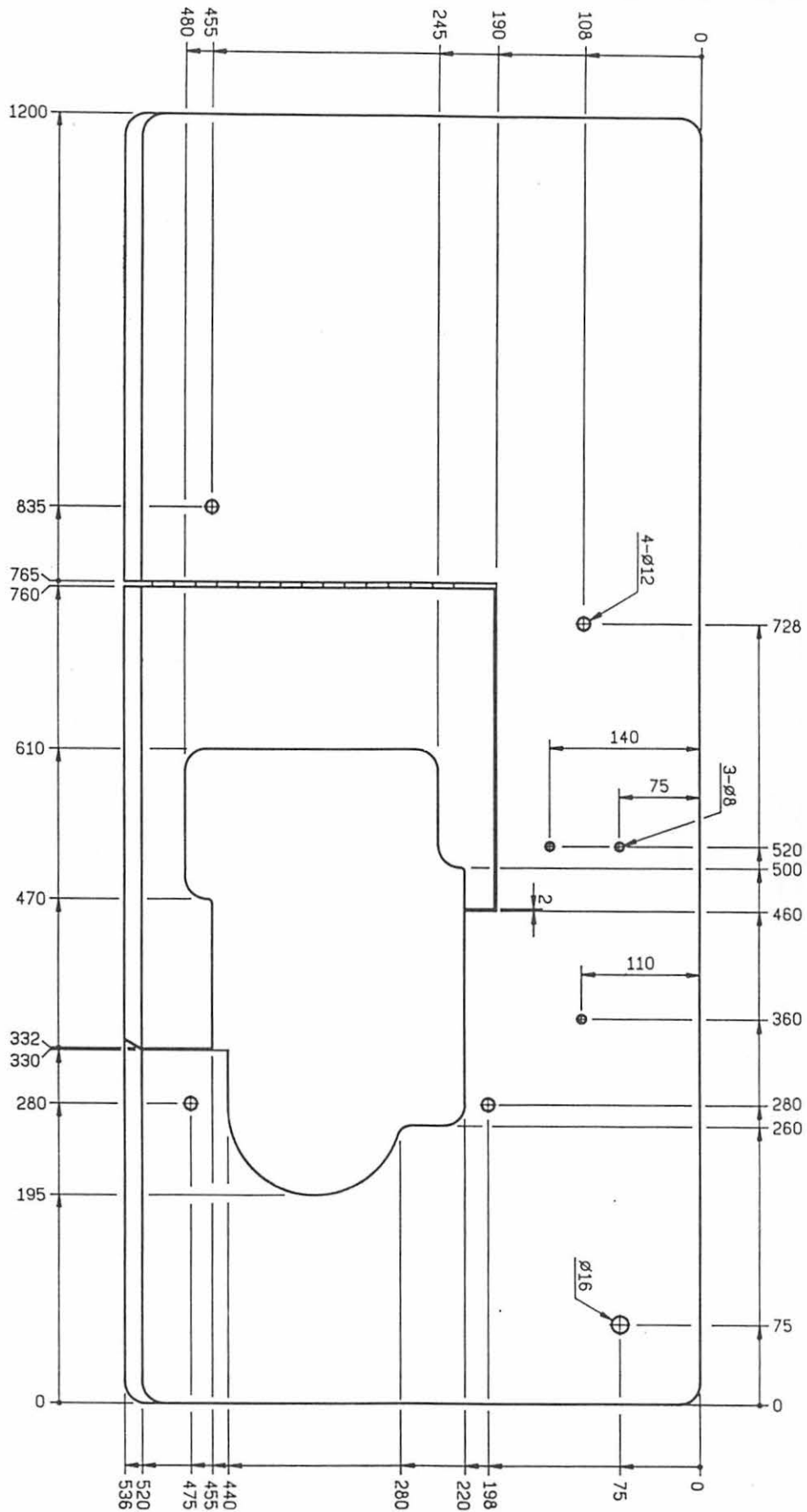


# E SERIES OVERLOCKER TABLE TOP CUT-OUT

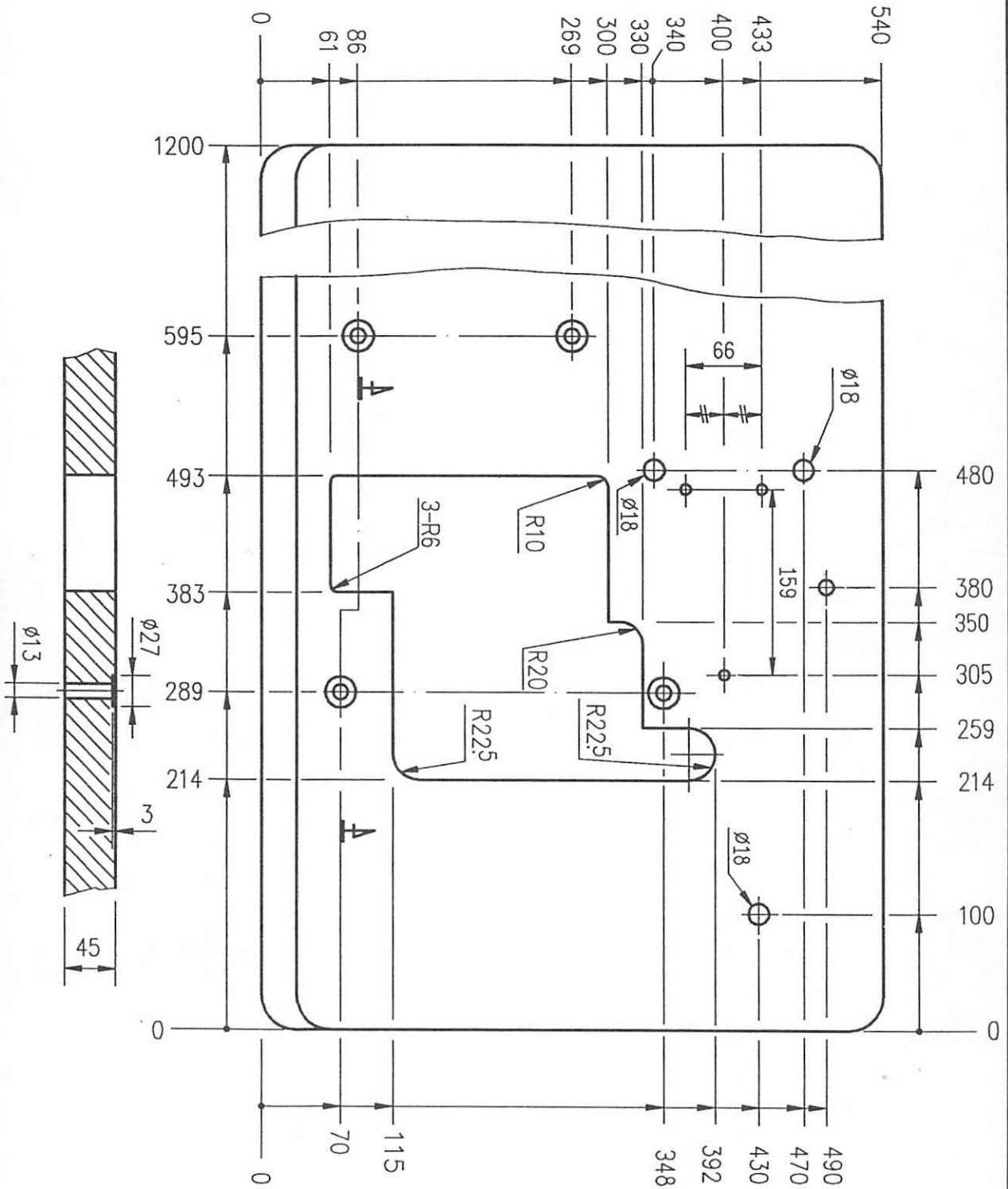
FOR SEMI-SUBMERGED



# E SERIES OVERLOCKER TABLE TOP CUT-OUT FOR FULLY-SUBMERGED



# S SERIES OVERLOCKER TABLE TOP CUT-OUT FOR SEMI-SUBMERGED





# SIRUBA®