

SIRUBA®


銀箭牌工業用縫紉機
INDUSTRIAL SEWING MACHINE

500

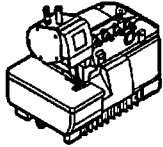

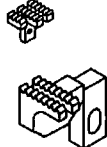





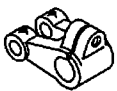


零件圖 PARTS LIST



CE

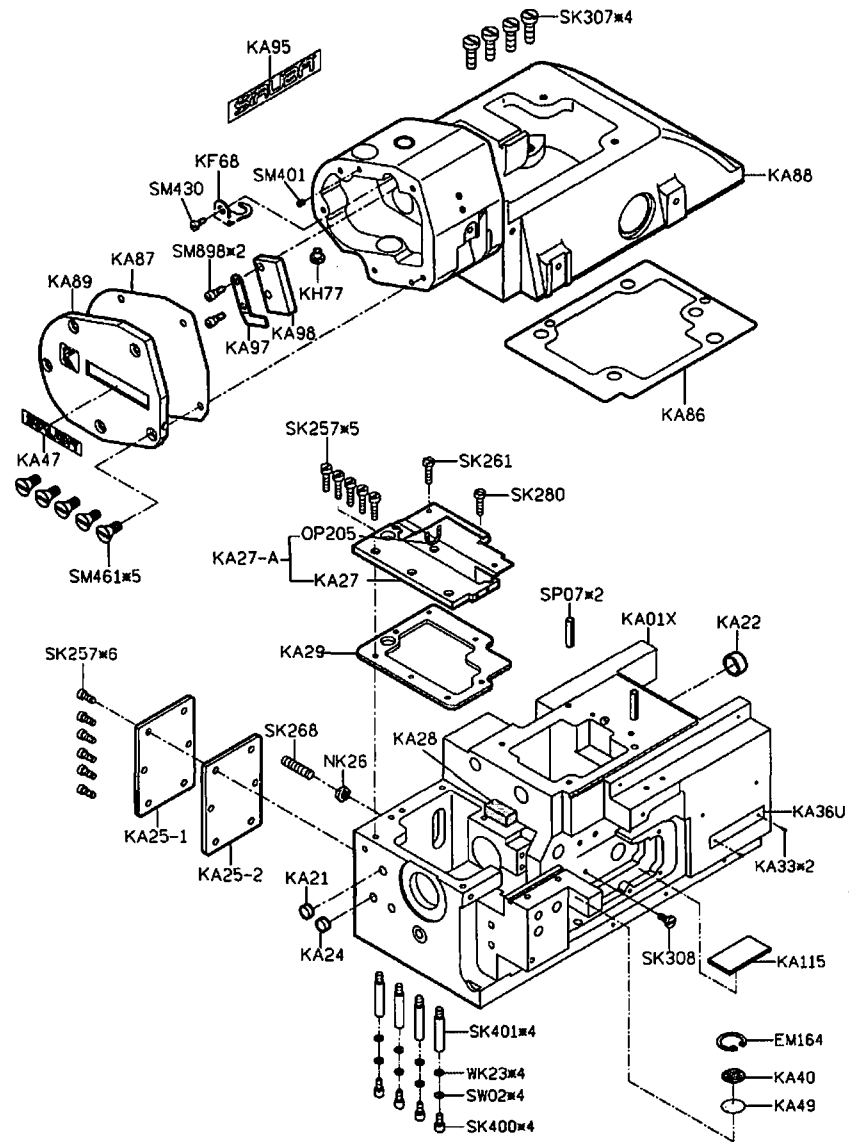
 高林股份有限公司
KAULIN MFG. CO., LTD.

From the library of: Superior Sewing Machine & Supply LLC

										
機 型 MODEL	針板 NEEDLE PLATE	送具 FEED DOG	送具 FEED DOG	押具 PRESSER FOOT	勾針 LOOPER	針留 NEEDLE CLAMP	束子 COLLAR	衝程 CRANK	衝程 CRANK	針號 NEEDLE
537-504M2-04	E800	H445	D440-A	P253E-3	LP26	KG131-E	KJ10F	KF60-A	KJ89-E KL52-E	DC27#11
537-504M2-04/LFC-2	E800	H445	D440-A	P101-3	LP26	KG131-E	KJ10F	KF60-A	KJ89-E KL52-E	DC27#11
537-504M5-04/BK	E589F	H974	D969-A	P975-3	LP26	KG131-E	KJ10F	KF60-A	KJ89-E KL52-E	DC27#11
537-505F1-04	E784	H442	D438-A	P152D-3	LP26	KG131-E	KJ10F	KF60-A	KJ89-E KL52-E	DC27#9
537-504M1-15	E934D	H442	D912-A	P152D-2	LP26	KG131-E	KJ10F	KF60-A	KJ89-E KL52-E	DC27#9
547-514M2-24	E919	H445	D440-A	P253E-4	LP26	KG142-E	KJ13F	KF61-A	KJ81-E KL52-E	DC27#11*2
547-514M2-24/VT	E919	H445	D440-A	P253E-4	LP26	KG142-E	KJ13F	KF61-A	KJ81-E KL52-E	DC27#11*2
547-514M2-25	E920	H445	D440-A	P253E-4	LP26	KG142-E	KJ13F	KF61-A	KJ81-E KL52-E	DC27#11*2
547-514M5-23/BK	E591F	H974	D969-A	P957-4	LP26	KG142-E	KJ13F	KF61-A	KJ81-E KL52-E	DC27#11*2
547-514M7-24	E919A	H446	D095-A	P253E-4	LP38	KG142-E	KJ13F	KF61-A	KJ81-E KL52-E	DC27#16*2
557-516M2-35	E982	H497	D489-A	P504-A	LP26	KG153-E	KJ10F	KF60-A	KJ81-E KL69-E	DC27#14*2
557-516M2-35/CT	E982C	H497	D489-A	P504-A	LP26	KG153-E	KJ10F	KF60-A	KJ81-E KL69-E	DC27#14*2
557-516M2-55	E986	H500	D489-A	P502-A	LP26	KG155-E	KJ10F	KF60-A	KJ81-E KL69-E	DC27#14*2
557-516M2-55/CT	E986C	H500	D489-A	P502-A	LP26	KG155-E	KJ10F	KF60-A	KJ81-E KL69-E	DC27#14*2
557-516L1-24	E834	H492	D487-A	P500-A	LP26	KG152-E	KJ10F	KF60-A	KJ81-E KL69-E	DC27#14*2
557-516L1-35	E839	H492	D487-A	P504-A	LP26	KG153-E	KJ10F	KF60-A	KJ81-E KL69-E	DC27#14*2
567-516M2-324	E989	H497	D971-A	P233-A	LP26	KG333-E	KJ13F	KF61-A	KJ81-E KL69-E	DC27#11*3

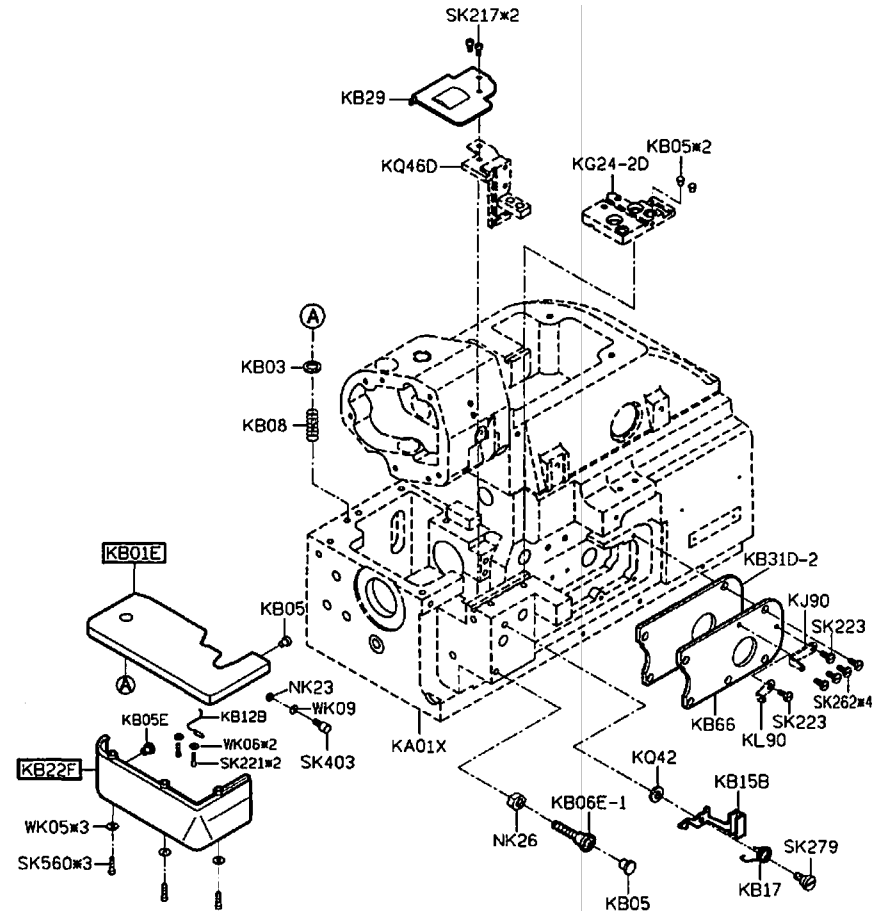
規格件表 CONVERSION CHART

PARTS LIST FOR KA GROUP

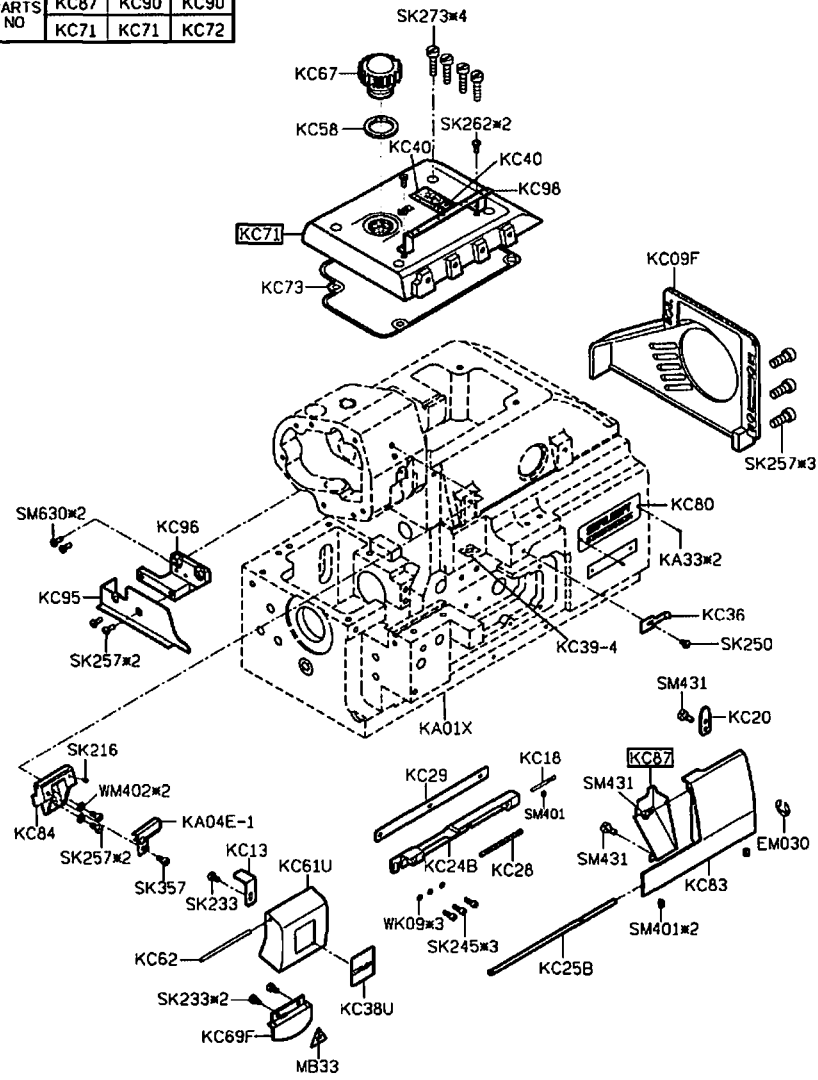


PARTS LIST FOR KB GROUP

MODEL	三四線車	五六線車
PARTS NO	KB01E KB22F	KB02E KB23F

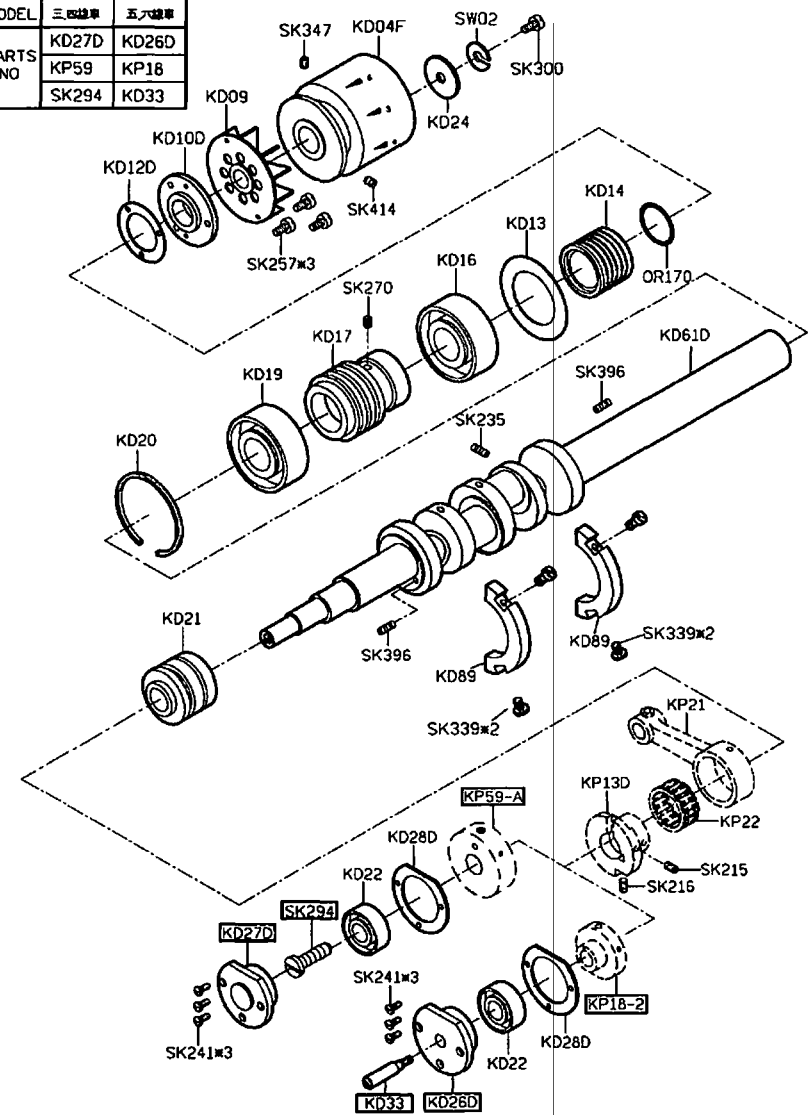


MODEL	三四線車	五線車	六線車
PARTS NO	KC87	KC90	KC90
	KC71	KC71	KC72



PARTS LIST FOR KC GROUP

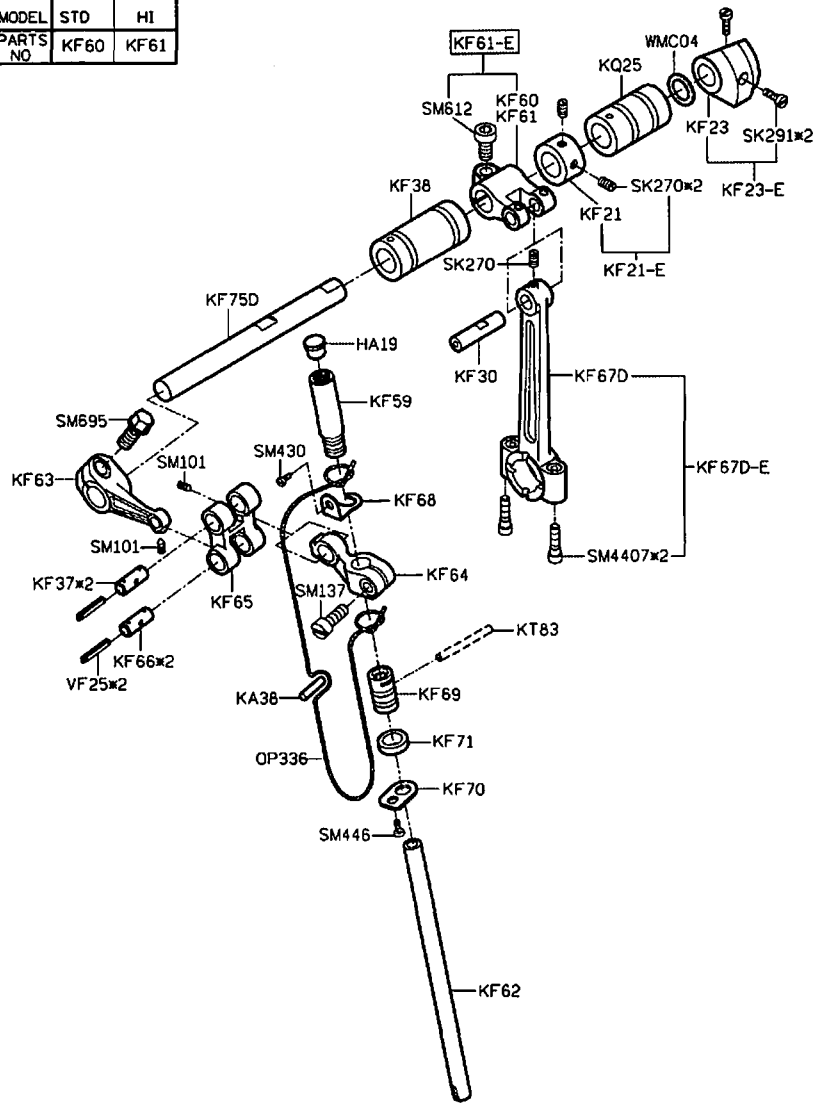
MODEL	三四線車	五六線車
PARTS NO	KD27D	KD26D
	KP59	KP18
	SK294	KD33



PARTS LIST FOR KD GROUP

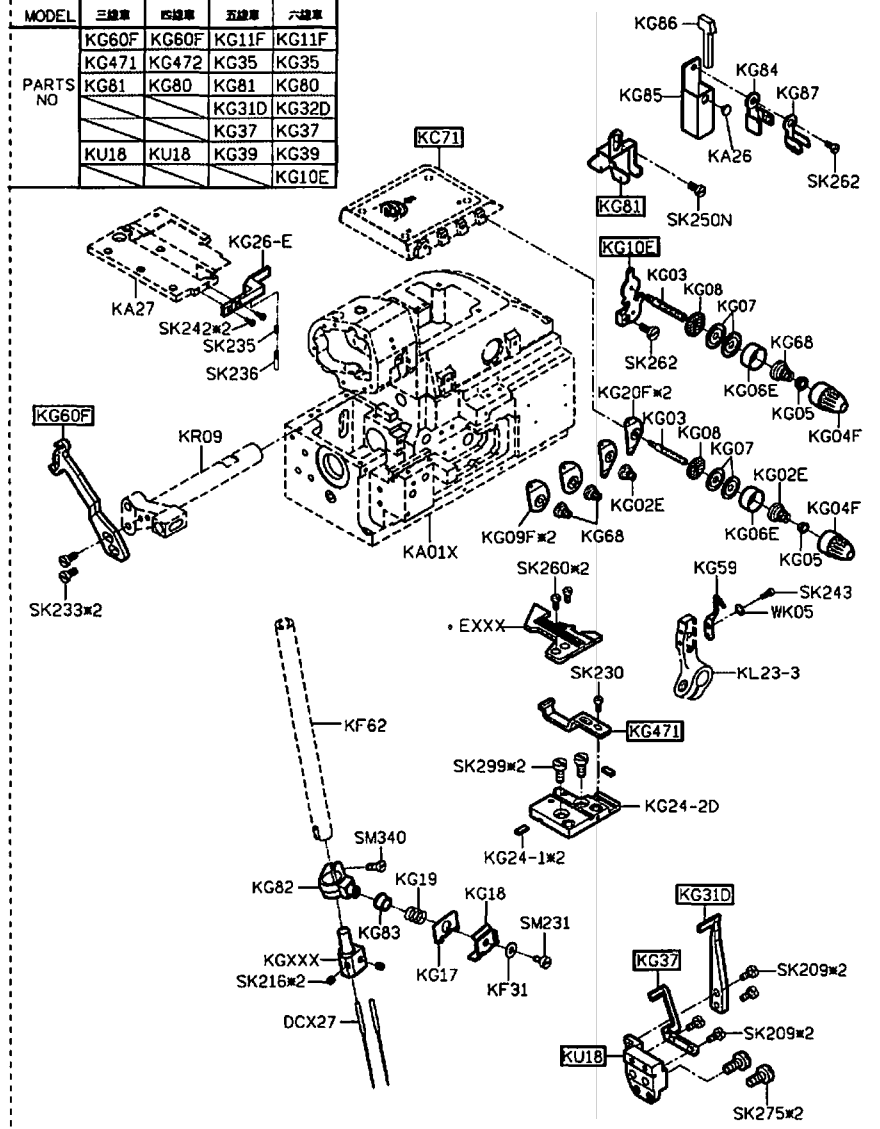
PARTS LIST FOR KF GROUP

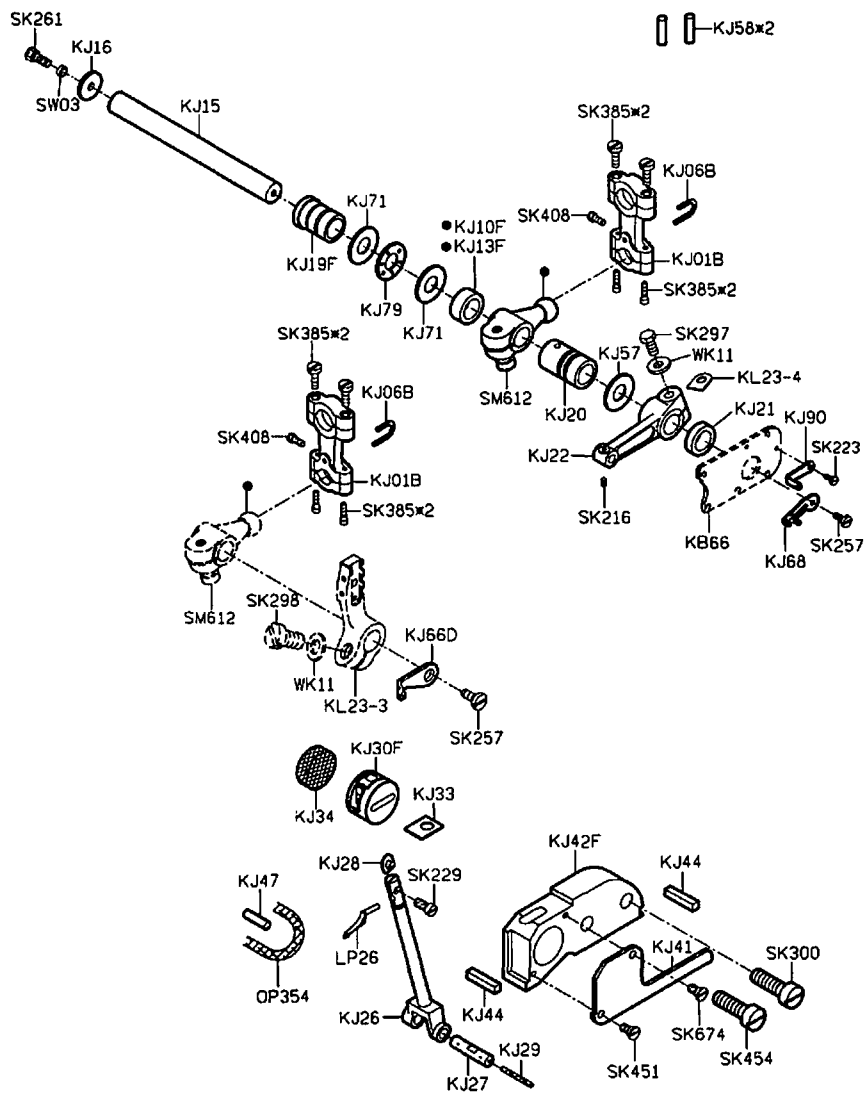
MODEL	STD	HI
PARTS NO	KF60	KF61



PARTS LIST FOR KG GROUP

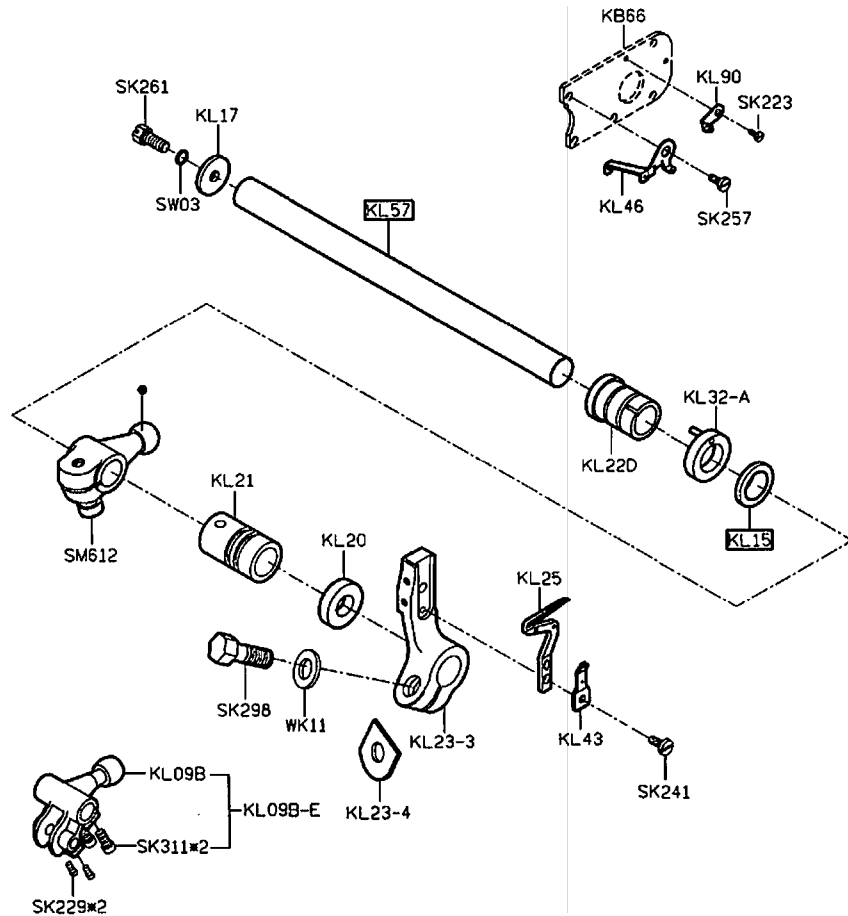
MODEL	三線車	四線車	五線車	六線車
PARTS NO	KG60F	KG60F	KG11F	KG11F
	KG471	KG472	KG35	KG35
	KG81	KG80	KG81	KG80
			KG31D	KG32D
			KG37	KG37
	KU18	KU18	KG39	KG39
				KG10E





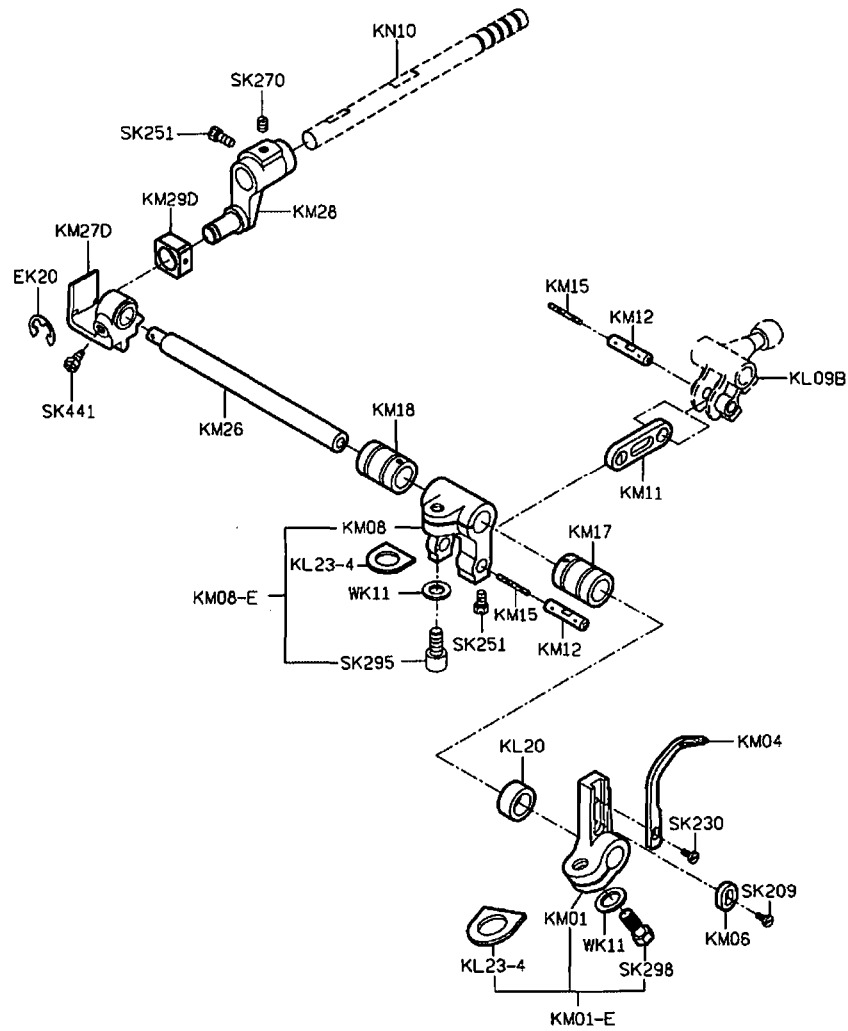
PARTS LIST FOR KJ GROUP

MODEL	三四線車	五六線車
PARTS NO	KL57	KL16
	KL15	KL11

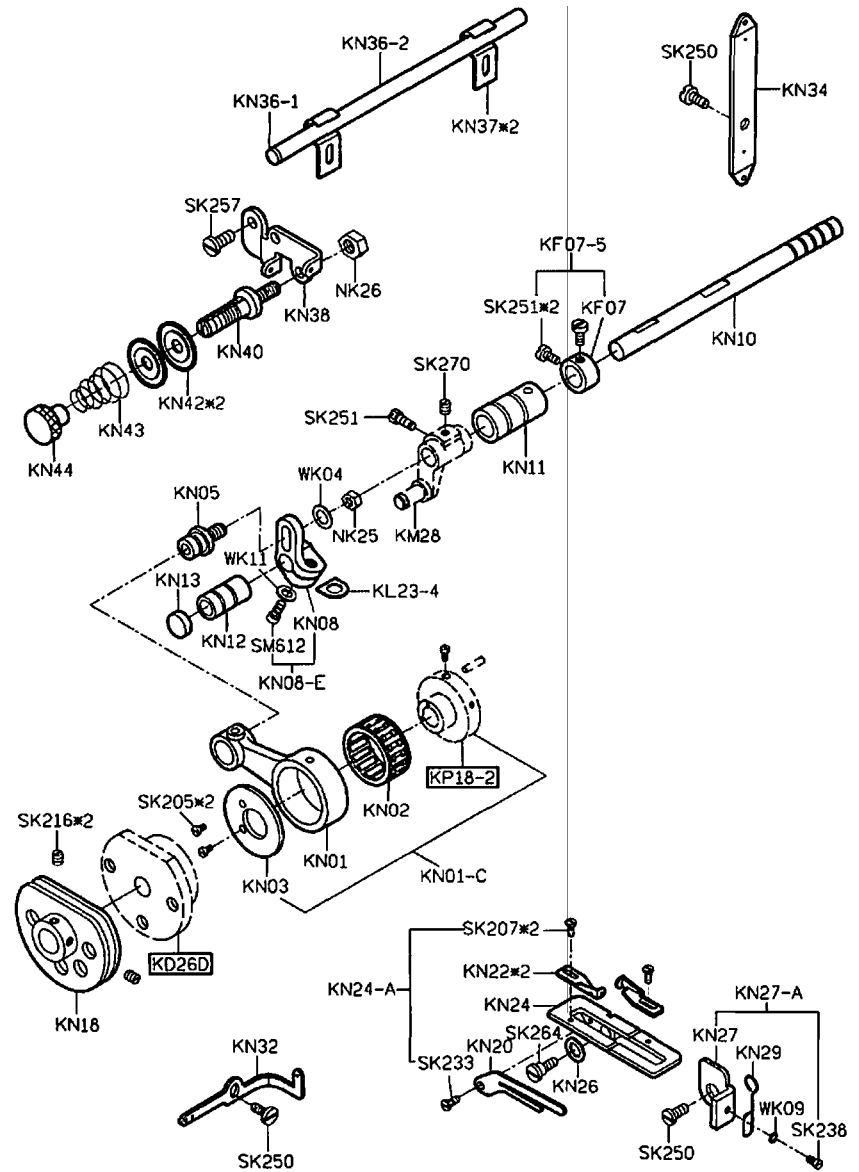


PARTS LIST FOR KL GROUP

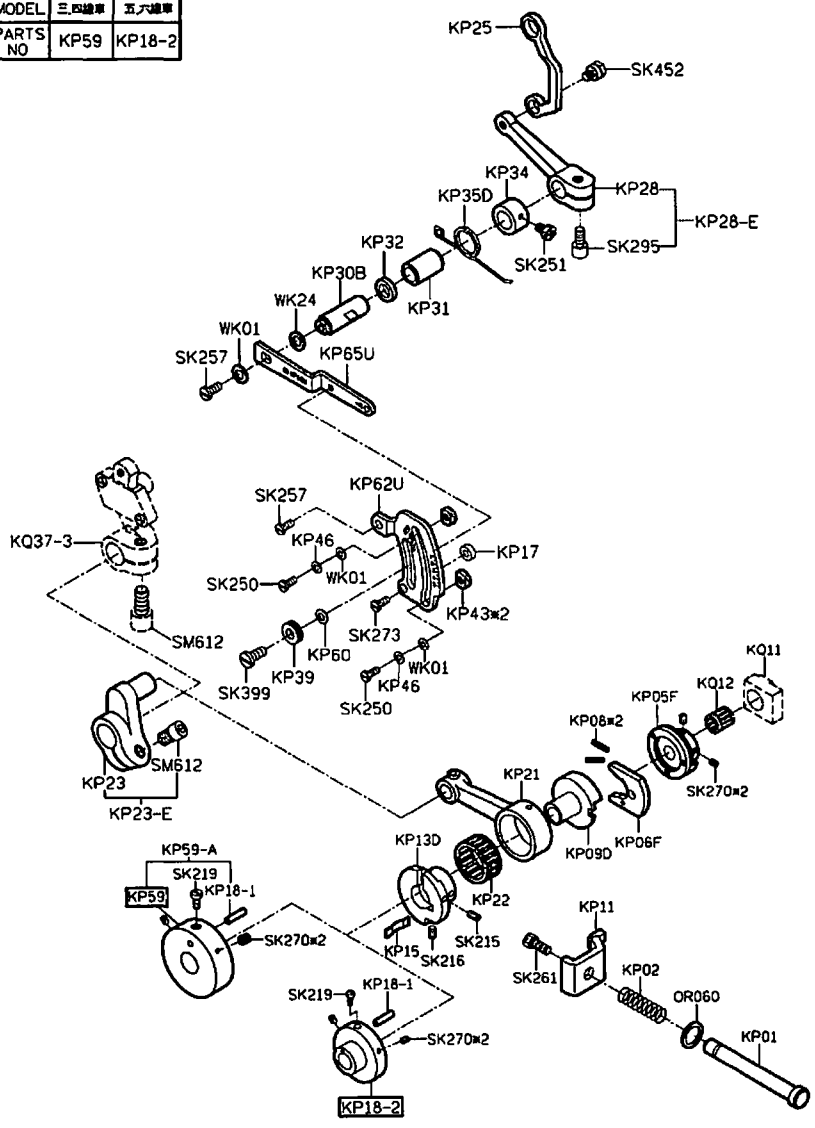
PARTS LIST FOR KM GROUP



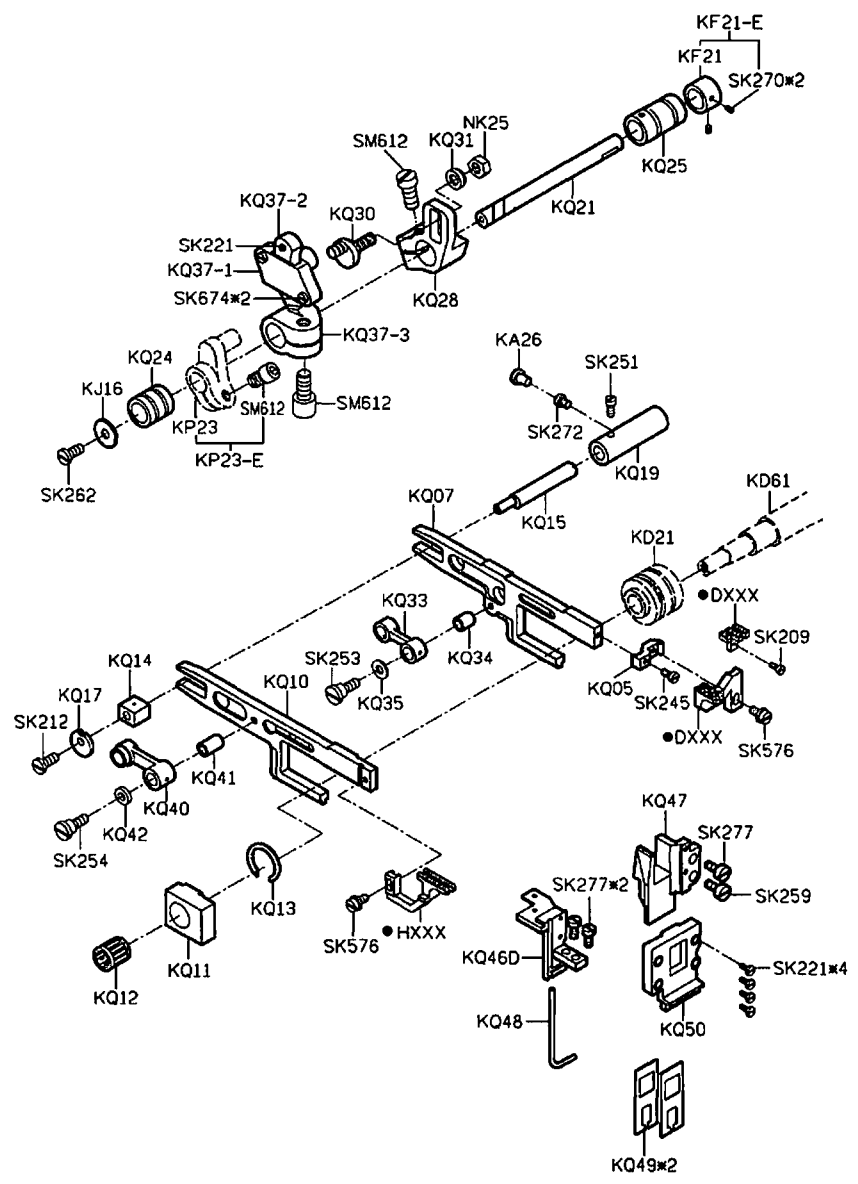
PARTS LIST FOR KN GROUP



MODEL	三四線車	五六線車
PARTS NO	KP59	KP18-2



PARTS LIST FOR KP GROUP

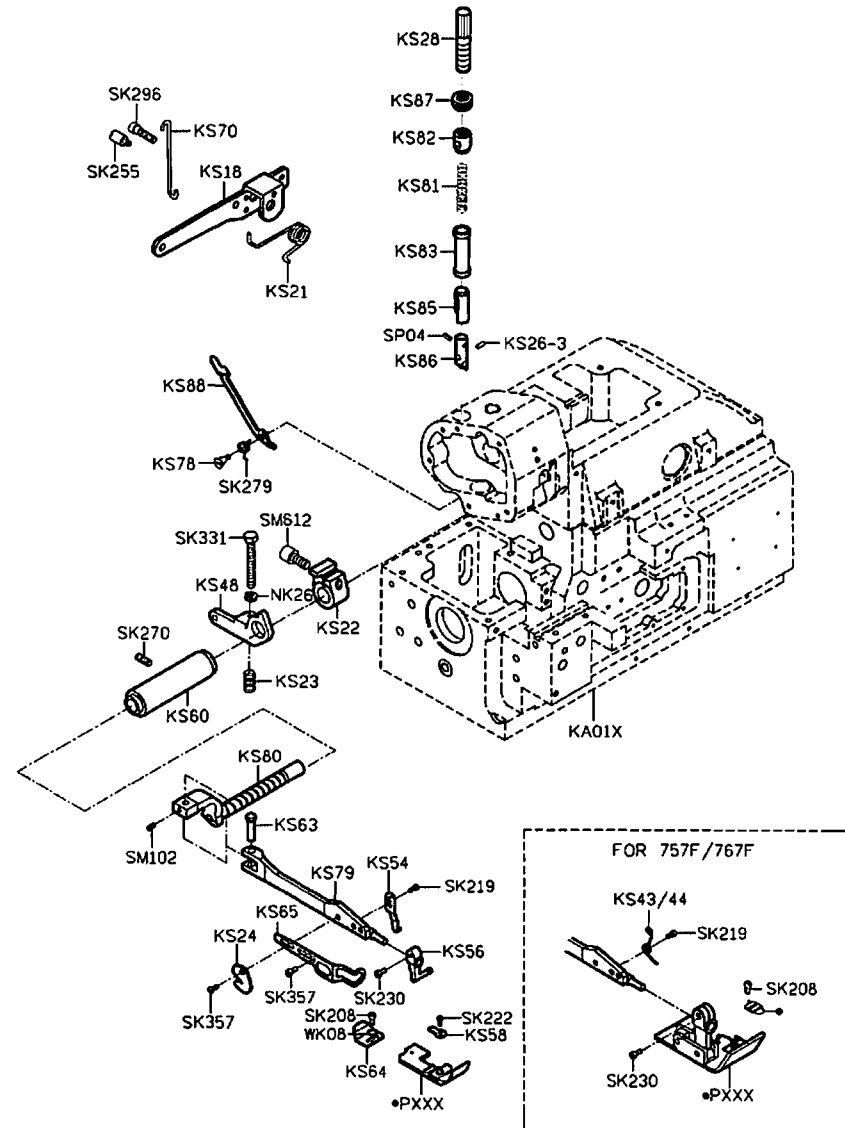
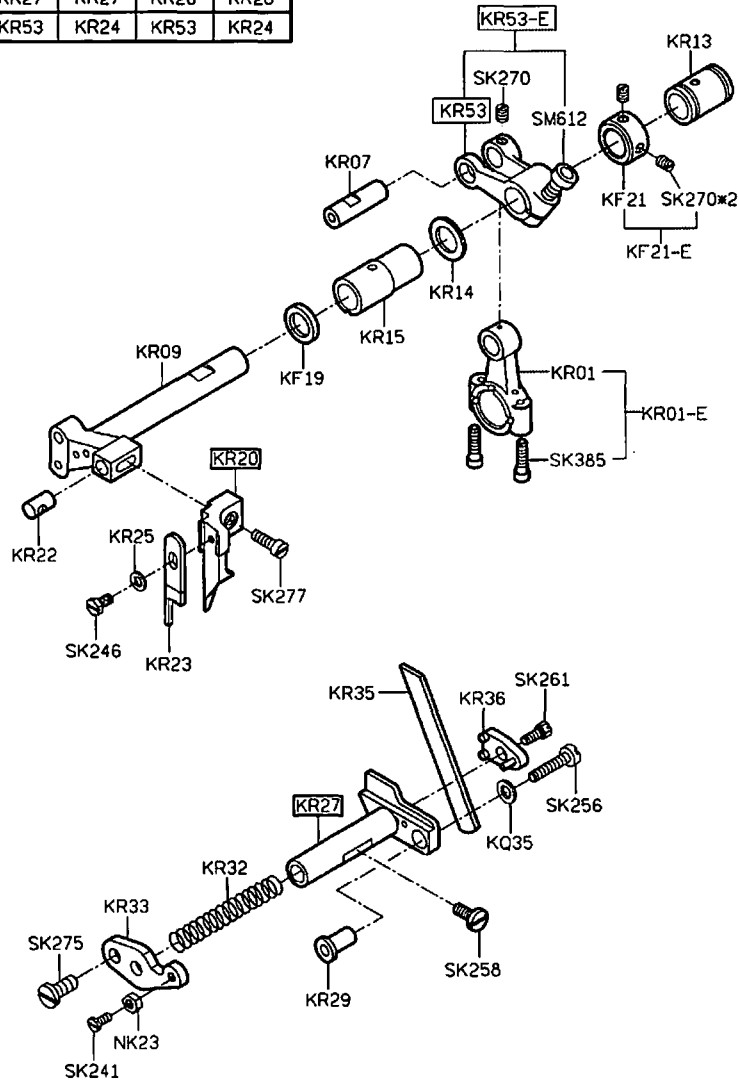


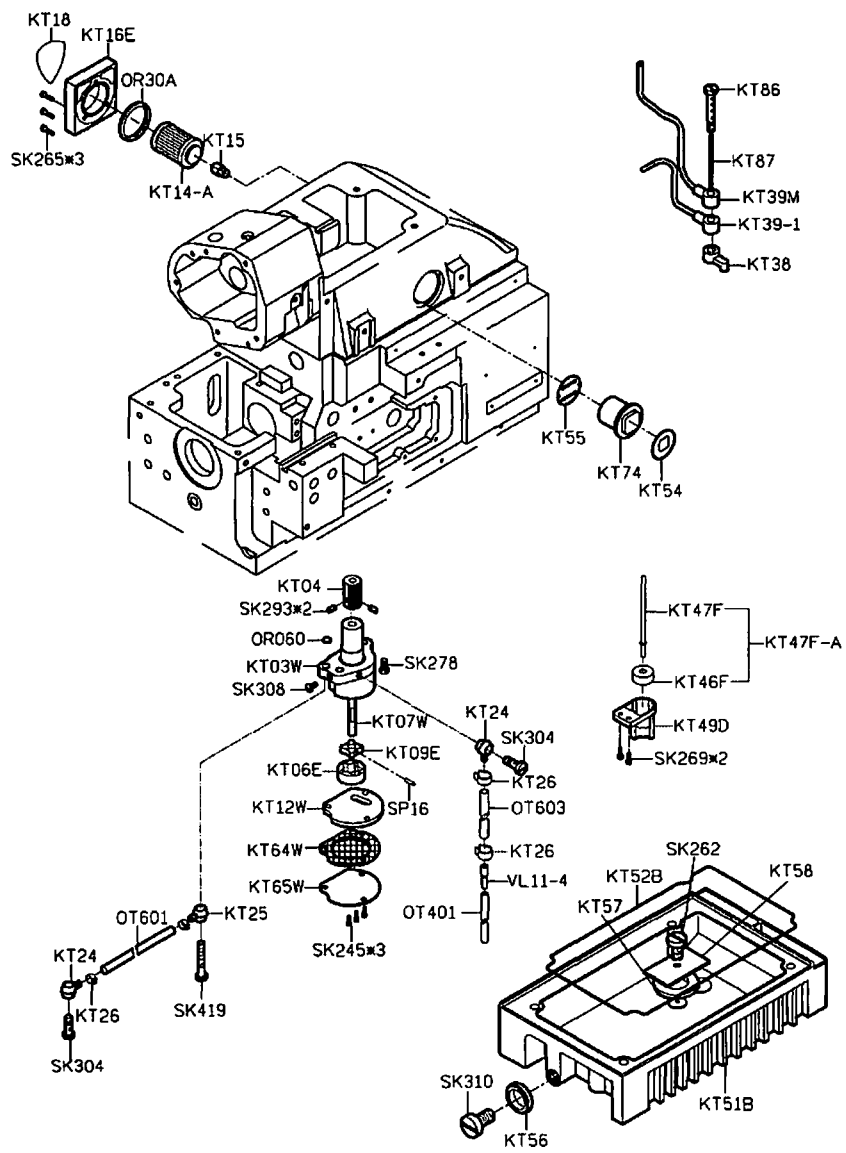
PARTS LIST FOR KQ GROUP

PARTS LIST FOR KR GROUP

PARTS LIST FOR KS GROUP

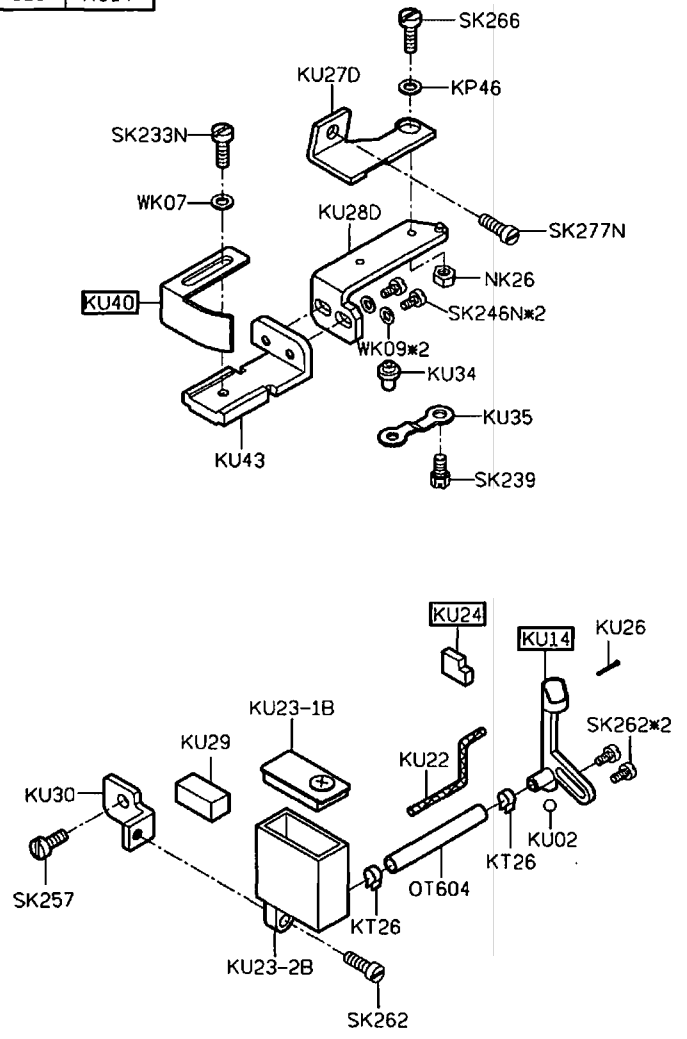
MODEL	三線車 / 四線車	五線車	六線車
PARTS NO	KR20	KR20	KR19
	KR27	KR27	KR26
	KR53	KR24	KR53
		KR53	KR24





PARTS LIST FOR KT GROUP

MODEL	三四線車	五六線車
PARTS NO	KU40	KU39
	KU25	KU24
	KU15	KU14



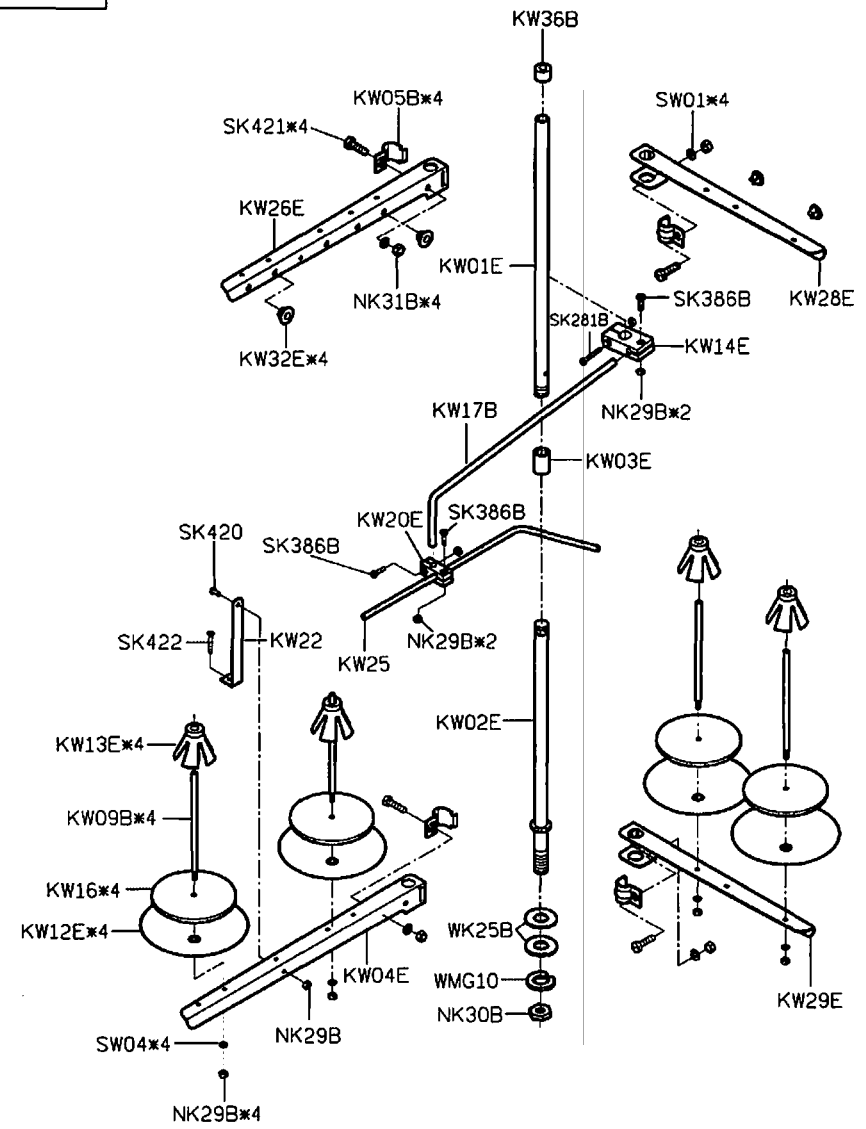
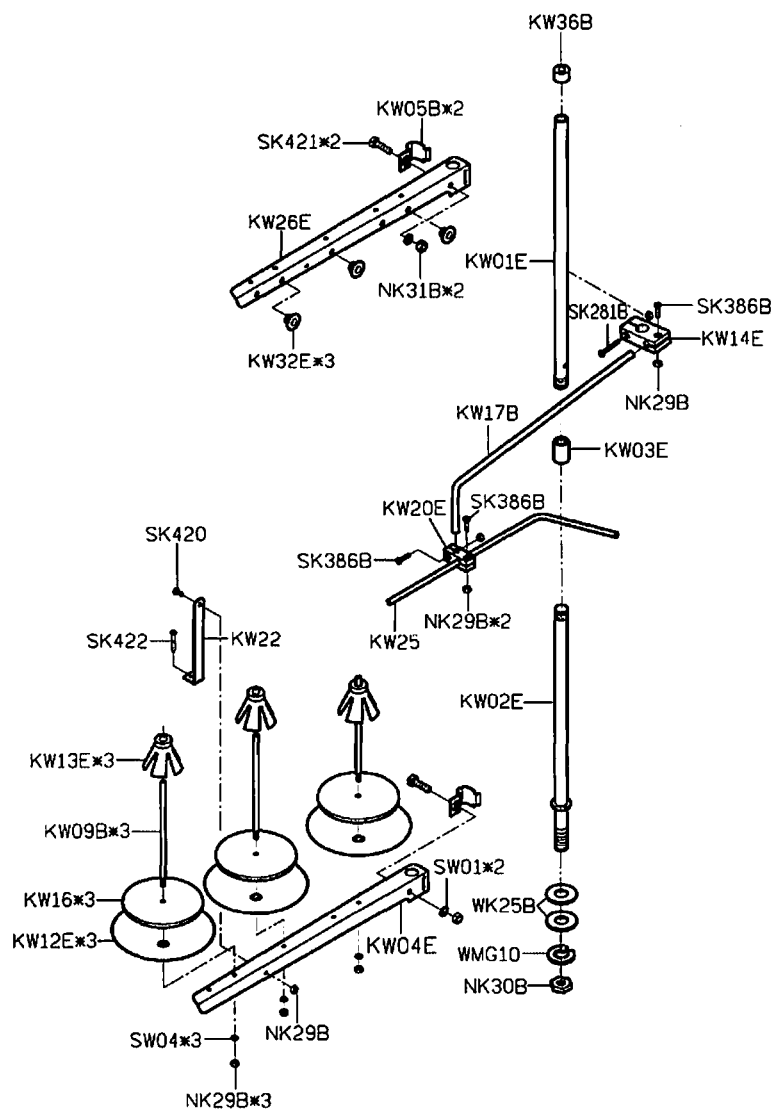
PARTS LIST FOR KU GROUP

PARTS LIST FOR KW GROUP

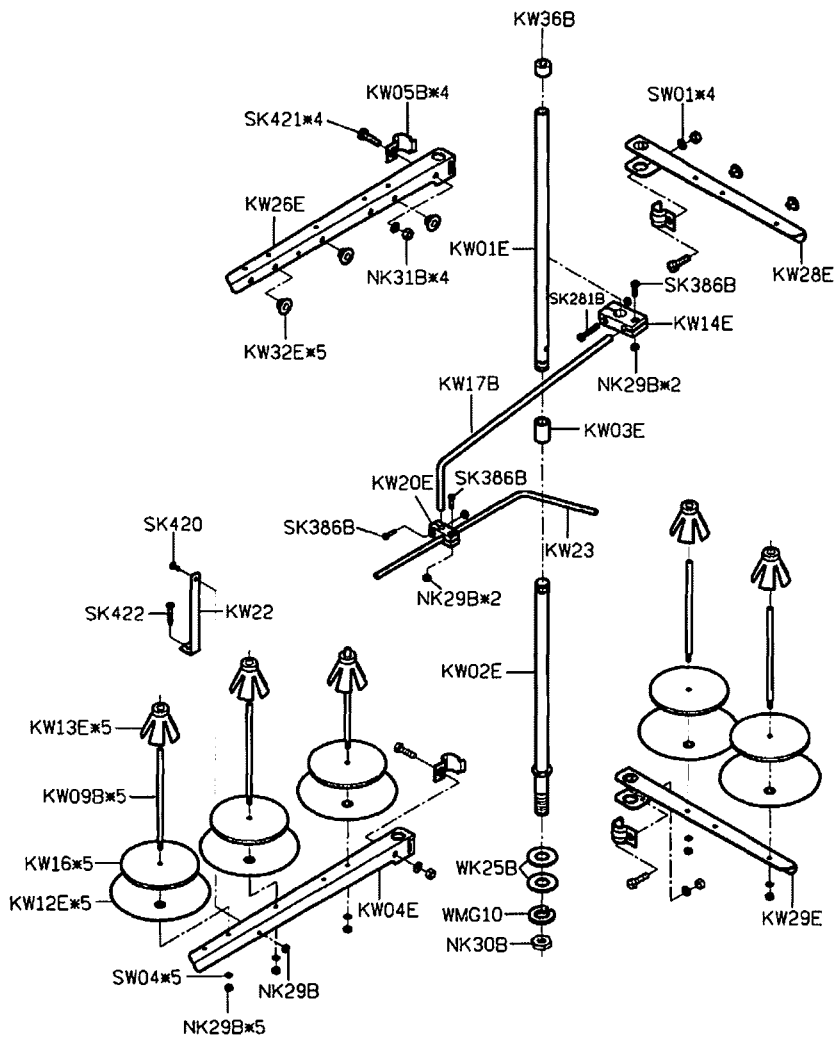
PARTS LIST FOR KW GROUP

KW40E-3

KW40E-4

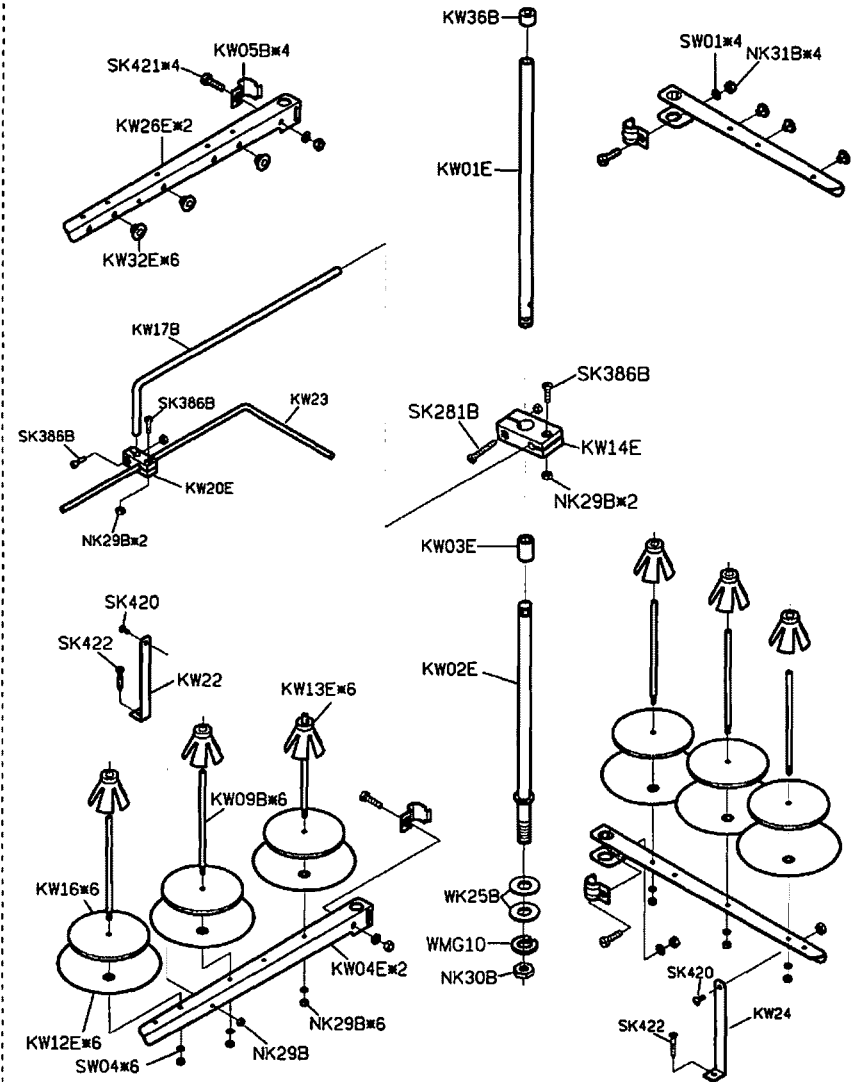


KW40E-5



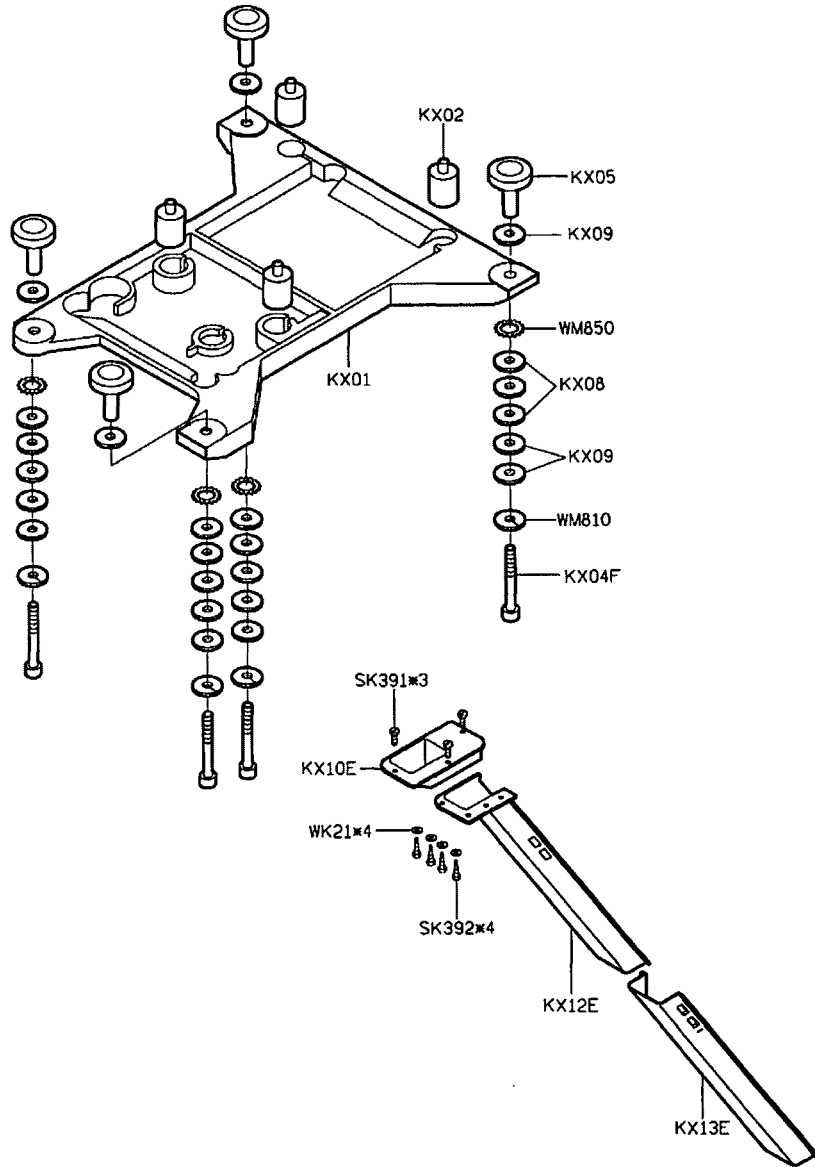
PARTS LIST FOR KW GROUP

KW40E-6

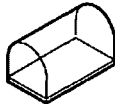
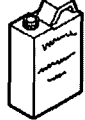













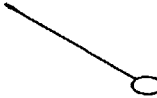













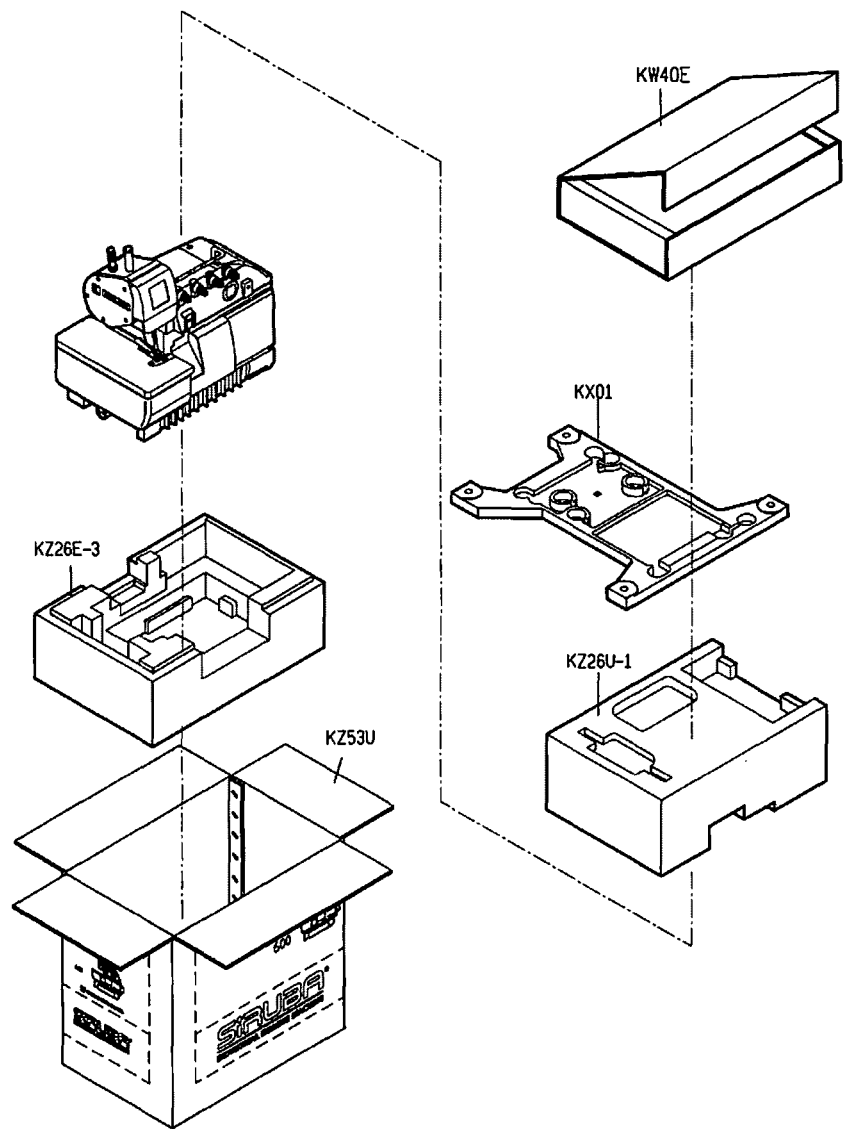
PARTS LIST FOR KW GROUP

PARTS LIST FOR KX GROUP



PARTS LIST FOR KY GROUP

KY01 防塵罩 	KY02-A 油罐 	KY03 油壺 	KY04 漏斗 	KY05 油壺 
KY07 開口板手 	KY08 開口板手 	KY09 開口板手 	KY10 六角板手 	KY11 六角板手 
KY12 六角板手 	KY14 內六角螺絲起子 	KY16 一字起子 	KY17 一字起子 	KY18 鑷子 
KY19 穿線器 	KY20D 腳踏板 	KY21-A/MY21 鉤子/鍊條 	KY26F 工具袋 	KR35 下刀片 
KT14-A 濾油器 	KZ03 乾燥劑 	針*4 	KZ08M-2 零件圖 	KZ08M 使用說明書 
SK216 螺絲 	MY11 六角板手 			



PARTS LIST FOR KZ GROUP



500

高林股份有限公司 KAULIN MFG. CO., LTD.

The specification and/or appearances of the equipment described in this parts list are subject to change because of modification without previous notice.

KZ08M-2. MAY. 2006

From the library of: Superior Sewing Machine & Supply LLC