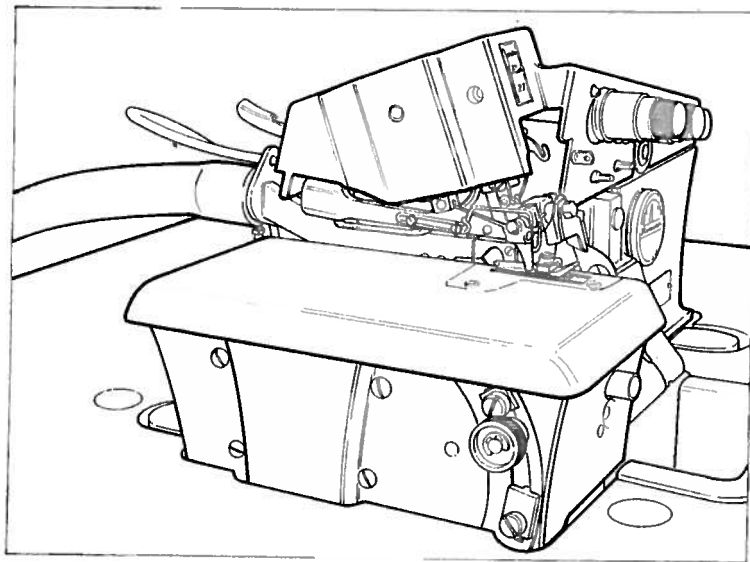


Rimoldi

LIBRETTO ISTRUZIONI E CATALOGO PEZZI DI RICAMBIO
INSTRUCTIONS HANDBOOK AND SPARE PARTS CATALOGUE
LIVRET D'INSTRUCTIONS ET CATALOGUE RECHANGES
GEBRAUCHSANWEISUNGEN UND ERSATZTEILELISTE

APPARECCHIATURE
ATTACHMENTS
DISPOSITIFS
VORRICHTUNGEN

135-80	135-81
136-80	136-81
137-80	137-81



n. 76

999913-5-00

APPARECCHIATURE

135-80

135 - 81

136-80

136 - 81

DESCRIZIONE

Apparecchiature per teste serie Tagliacuce per il taglio della catenella a filo del tessuto all'inizio ed alla fine della cucitura. Un getto d'aria compressa sincronizzato con l'avviamento della macchina, convoglia la catenella sui coltelli del dispositivo di taglio, azionati dal movimento della testa.

IMPIEGHI

Serve per tagliare perfettamente a filo del tessuto eccedenze di catenella all'inizio ed alla fine di ogni operazione di cucitura, nelle operazioni di surfilatura e assemblaggio.

COMPOSTE DA:

- 1 Dispositivo di taglio con tubo metallico di convogliamento catenella
- 1 Tubo in plastica per lo scarico della catenella
- 1 Gruppo dosatore di mandata aria con filtro
- 1 Tirante comando motore completo di valvola pneumatica a due vie sincronizzata con l'avviamento del motore.

POSSONO ESSERE APPLICATE SU TESTE

028-00-01/02/03/04/05/06/ 07/08/09/10/16/17/18/25	327-00-1CD-01/02/03/05/ 06/07/09/10/25/30/31/32/ 39	229-00-01/02/03/04/05/06 07/08/10 229-22-01/04 230-00-01	329-00-2CD-01/02/03/04/ 05/06/07/08/10/13/15 329-00-3MU-01 329-22-2CD-04 330-00-1CD-01
028-10-02/03/04/05			
028-28-01/02/03/04/05/06/ 07	327-00-1MD-23/33/34 327-00-2CD-12/13/34/38/ 41		
228-00-01/02/03/04/05/06/ 07/08/09/10/13/14/15/17/18	327-00-2MD-20/36 327-10-1CD-02/03/04/06 327-28-1CD-02/07/09/11 327-28-1CU-04/06		
228-10-01/02/03/05/06/07			
228-28-01/02/03/04/05/06/ 07/10			

ATTENZIONE

Le apparecchiature sopra descritte funzionano ad aria compressa con pressione di 2,5 ÷ 7 atmosfere. Il consumo d'aria per una apparecchiatura è di 70 ÷ 100 normal litri al 1' (valore max). Qualora non si disponesse di un impianto centrale di aria compressa, può essere fornito un compressore per l'alimentazione di n. 2 apparecchiature.

137-80

137 - 81

DESCRIZIONE

Apparecchiatura per il taglio della catenella a filo del tessuto all'inizio ed alla fine della cucitura. Il convogliamento della catenella sui coltelli del dispositivo di taglio azionati dal movimento della testa, avviene per mezzo di aria aspirata.

IMPIEGHI

Serve per tagliare perfettamente a filo del tessuto le eccedenze di catenella all'inizio ed alla fine della cucitura, nelle operazioni di assemblaggio e particolarmente nell'operazione di cucitura delle punte delle calze.

COMPOSTA DA:

- 1 Dispositivo di taglio con tubo metallico di convogliamento catenella
- 1 Filtro
- 1 Elettroaspiratore tipo A 300 per il collegamento di una macchina
- 1 Bocchettone a una via con tubo in plastica (lungo 75 cm.), per il collegamento

NB.: A richiesta l'apparecchiatura può essere corredata di un elettroaspiratore A 300 per il collegamento da 2 a 4 macchine e di un bocchettone a 4 vie con tubo di collegamento.

PUO' ESSERE APPLICATA SU TESTE:

028-00-06/07/09/10	327-00-1CD-09/10/39
228-00-06/07/09/10/17/18	327-00-2CD-12/13/34/38 327-00-2MD-20/36

L'apparecchiatura 137 funziona ad aria aspirata e deve sempre essere collegata con un dispositivo aspiratore avente le seguenti caratteristiche:

Aria aspirata: 1,8 m³
Pressione statica: 315 mm di colonna H₂O
Potenza: 370 W

ATTACHMENTS

135 - 80

135 - 81

136 - 80

136 - 81

DESCRIPTION

Mechanically operated attachment for Overlock machine heads, for cutting the chain very close to the fabric at beginning and at the end of seam. A jet of compressed air synchronized with the start of machine, the chain onto the knives of the cutting device, operated by the machine head movement.

USES

For cutting very close to the fabric the excess of chain at beginning and at end of each seam when assembly or overedge seaming. It can be mounted on overlock machine heads.

CONSISTING OF:

- 1 Cutting device with metal tube for chain conveying
- 1 Plastic tube for waste chain
- 1 Air supply metering group with filter
- 1 Tie rod for motor control with pneumatic two-way valve synchronized with the start of motor.

IT CAN BE FITTED ON MACHINE HEADS:

028-00-01/02/03/04/05/06/ 07/08/09/10/16/17/18/25	327-00-1CD-01/02/03/05/ 06/07/09/10/25/30/31/32/ 39	229-00-01/02/03/04/05/06 07/08/10	329-00-2CD-01/02/03/04/ 05/06/07/08/10/13/15
028-10-02/03/04/05	327-00-1MD-23/33/34	229-22-01/04	329-00-3MU-01
028-28-01/02/03/04/05/06/ 07	327-00-2CD-12/13/34/38/ 41	230-00-01	329-22-2CD-04
228-00-01/02/03/04/05/06/ 07/08/09/10/13/14/15/17/18	327-00-2MD-20/36		330-00-1CD-01
228-10-01/02/03/05/06/07	327-10-1CD-02/03/04/06		
228-28-01/02/03/04/05/06/ 07/10	327-28-1CD-02/07/09/11 327-28-1CU-04/06		

ATTENTION:

The above attachments operate with compressed air at a pressure of 2.5 ÷ 7 Atm. Air consumption for one attachment is from 70 to 100 normal litres per minute (max. value).
If a central compressed air plant is not available, a compressor for feeding two attachments can be supplied.

137 - 80

137 - 81

DESCRIPTION

Attachment for overlock machine heads, for cutting the chain very close to the fabric at the beginning and at the end of seam. The conveying of the chain onto the knives of the cutting device operated by the machine head movement, is obtained by means of aspirated air.

USES

For cutting very close to the fabric the excess of chain at beginning and at end of each seam when assembly seaming and particularly suitable when closing the toes of socks and stockings. It can be mounted on overlock machine heads.

CONSISTING OF:

- 1 Cutting device with metal tube for chain conveying
- 1 Filter
- 1 Electro-suction unit A 300 for connecting 1 machine head
- 1 1-way pipe union and a plastic tube (75 cm long) for the connection

NB.: The attachment can be fitted, on request, with an A 300 electroaspirator for connecting to from 2 to 4 machines, and with a 4-way union with coupling tube.

IT CAN BE FITTED ON MACHINE HEADS:

028-00-06/07/09/10	327-00-1CD-09/10/39
228-00-06/07/09/10/17/18	327-00-2CD-12/13/34/38
	327-00-2MD-20/36

The 137 device works with vacuum air stream and must always be coupled to a suction device having the following features:

- Vacuum air stream: 1.8 cu.mt. (63.5 cu.ft.) per minute
- Static pressure: 315 mm (12.4") column of water
- Power: 370 W

INSTALLATION AND MAINTENANCE OF 135 AND 136 DEVICES

The 135 and 136 devices are supplied complete with air metering, filter with condensate discharger and with operating valve connected with the pedal tie rod.

The valve connected with the pedal tie rod is for operating the suction and must be calibrated, screwing or unscrewing the nut and the upper bushing A, so that, operating the pedal for starting the machine, the suction starts working one moment before the machine itself.

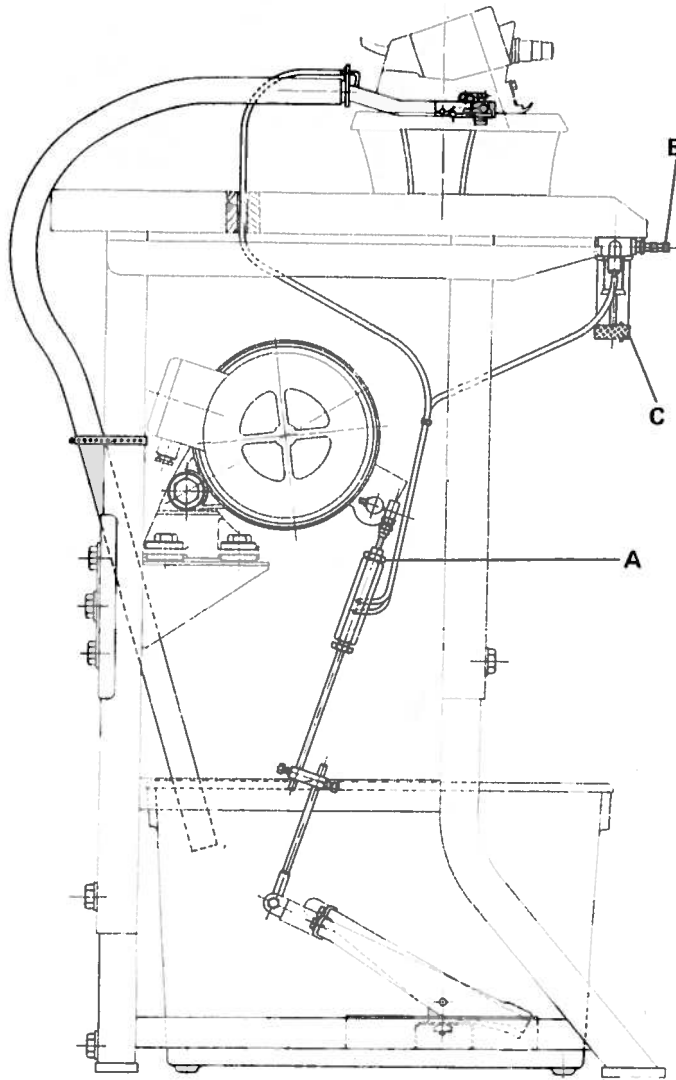
The air metering B is to limit the quantity of the air delivered. The air metering has to be regulated according to the volume of the thread chain, it will be regulated to the minimum for light thread chain of two threads, and nearly to the maximum for heavy wool chain of several threads.

A good regulation of the pedal valve and of the air metering reduces the compressed air consumption to the minimum necessary. The filter C, complete with condensate discharger, is for cleaning the compressed air and for removing moisture and dust from the same. It is, therefore, unnecessary that the compressed air line ahead of the device is provided with filters and condensate dischargers. It is necessary to periodically provide to discharge the condensate as soon as this, visible in the filter container, reaches a water level corresponding to 2 ± 3 cm.

The 135 - 136 devices work with compressed air having a pressure between 2,5 and 7 atmospheres.

The air consumption of a 135 or 136 device, in case it has to work continuously (long seams and with very reduced stops) and it has to discharge a heavy chain of several wool threads (air metering opened to the maximum) is of ~ 70 "normal litres" per minute. For different conditions the air consumption is reduced.

Therefore, for the working of one device it is advisable to use only a compressor with 70 ± 100 litres of sucked air with tank of 10-25 litres (working pressure: 6 ATA). For the working of 2 - 5 devices it is advisable to use only a compressor with $\sim 200 \pm 250$ litres of sucked air with tank of 50 - 100 litres (working pressure: 6 ATA).



INSTALLAZIONE E MANUTENZIONE APPARECCHIATURE 135 e 136

Le apparecchiature 135 e 136 vengono fornite complete di dosatore di portata, di filtro con scaricatore di condensa e di valvola di azionamento, collegata al tirante della pedalina.

La valvola collegata al tirante della pedalina, serve alla messa in funzione dell'aspirazione e deve essere tarata, avvitando o svitando il dado e la bussola superiore A, in modo tale che azionando la pedalina di messa in moto della macchina, l'aspirazione entri in funzione un attimo prima della macchina stessa.

Il dosatore di portata B, serve a limitare l'entità erogata. Il dosatore va regolato in funzione del volume della catenella: sarà regolato al minimo per catenella leggera a due fili e quasi al massimo per catenella di lana pesante a più fili.

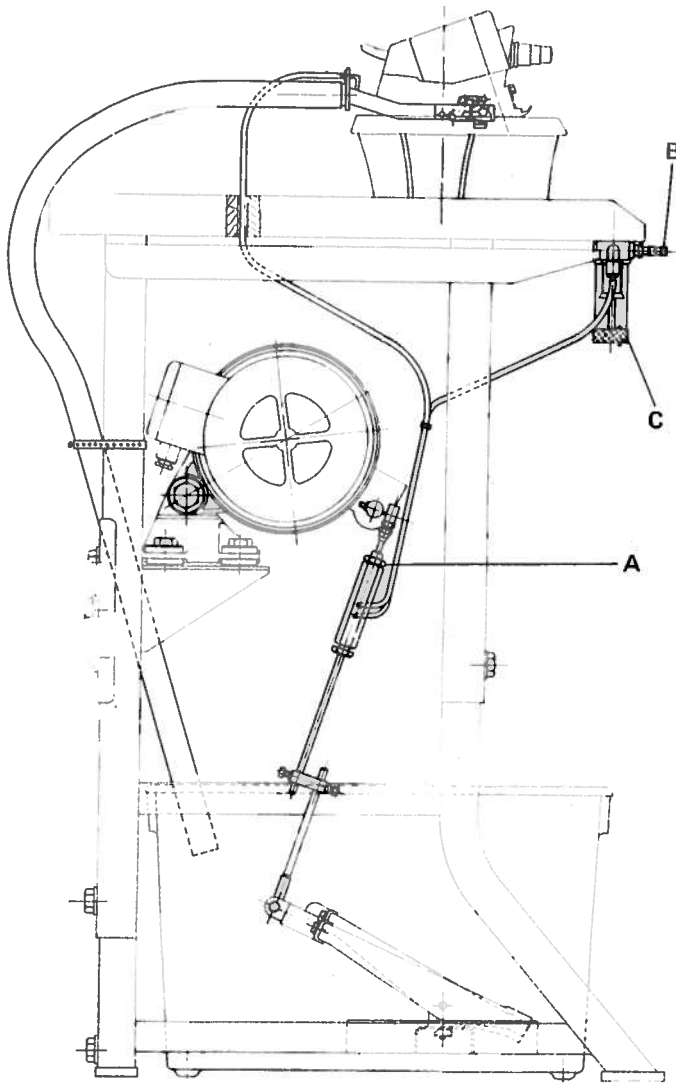
Una buona regolazione della valvola della pedalina e del dosatore di portata limita al minimo necessario il consumo di aria compressa. Il filtro C completo di scaricatore di condensa serve a purificare l'aria compressa ed a eliminare l'umidità e la polvere della stessa. Non è pertanto necessario che la linea dell'aria compressa a monte dell'apparecchiatura sia provvista di filtri e scaricatore di condensa. E' necessario provvedere periodicamente allo scarico della condensa non appena, questa, visibile nel contenitore del filtro raggiunge un livello di acqua pari a 2-3 centimetri.

Le apparecchiature 135 - 136 funzionano con aria compressa con pressione compresa tra 2,5 e 7 atmosfere.

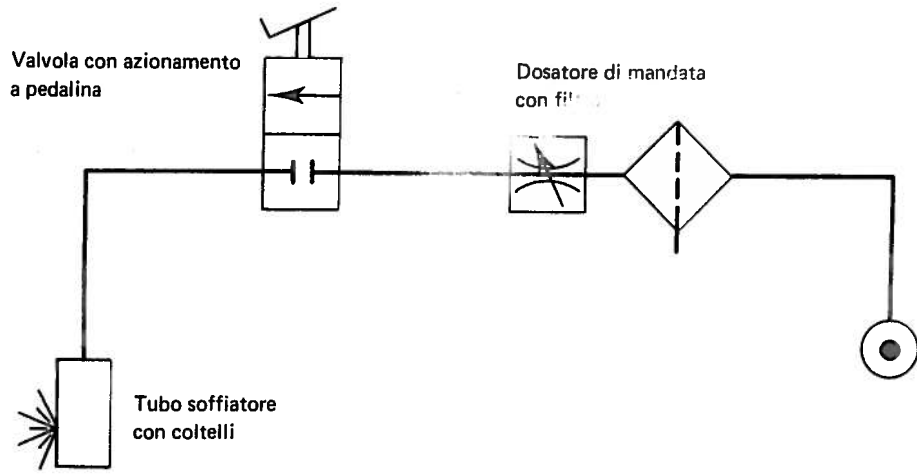
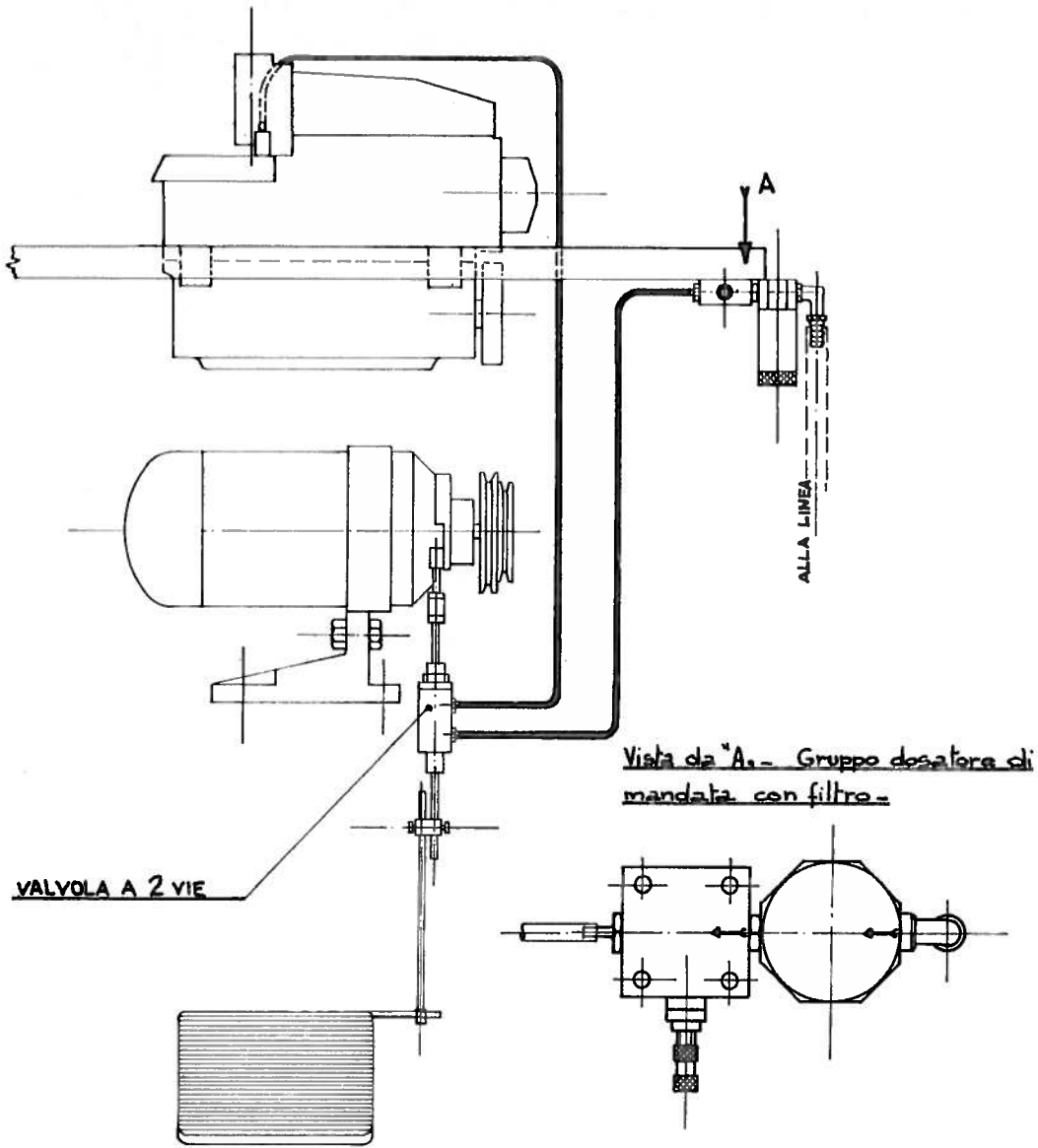
Il consumo di aria di un'apparecchiatura 135 o 136 qualora debba funzionare continuamente (cuciture lunghe e con pause ridottissime) e debba scaricare una catenella pesante a più fili in lana (dosatore aperto al massimo), è di ~70 "normal litri" al minuto.

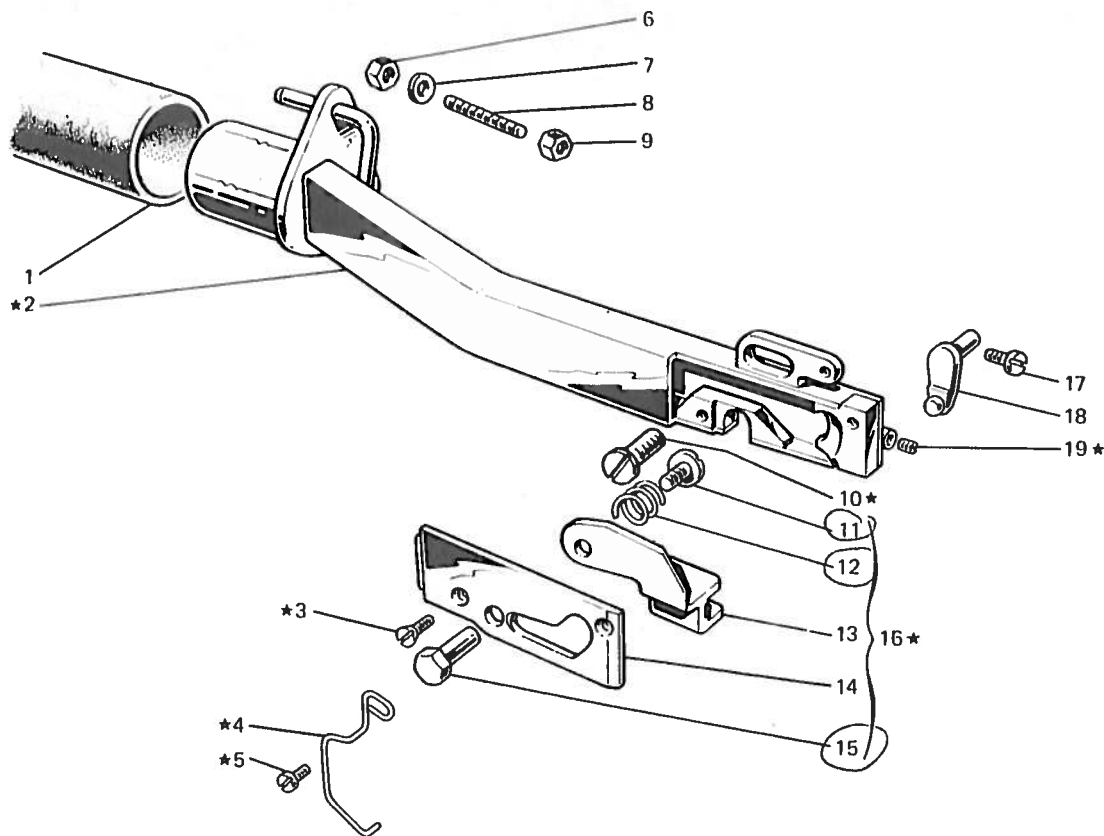
Per condizioni differenti il consumo di aria si riduce.

Pertanto è consigliabile: per il funzionamento di una sola apparecchiatura l'impiego di un compressore con 70÷100 litri di aria aspirata con un serbatoio da 10÷25 litri (pressione di esercizio 6 ATA). Per il funzionamento da 2 a 5 apparecchiature, un compressore con ~200-250 litri di aria aspirata con un serbatoio da 50÷100 litri, (pressione di esercizio 6 ATA).



SCHEMA COMANDO PNEUMATICO
PNEUMATIC CONTROL DIAGRAM

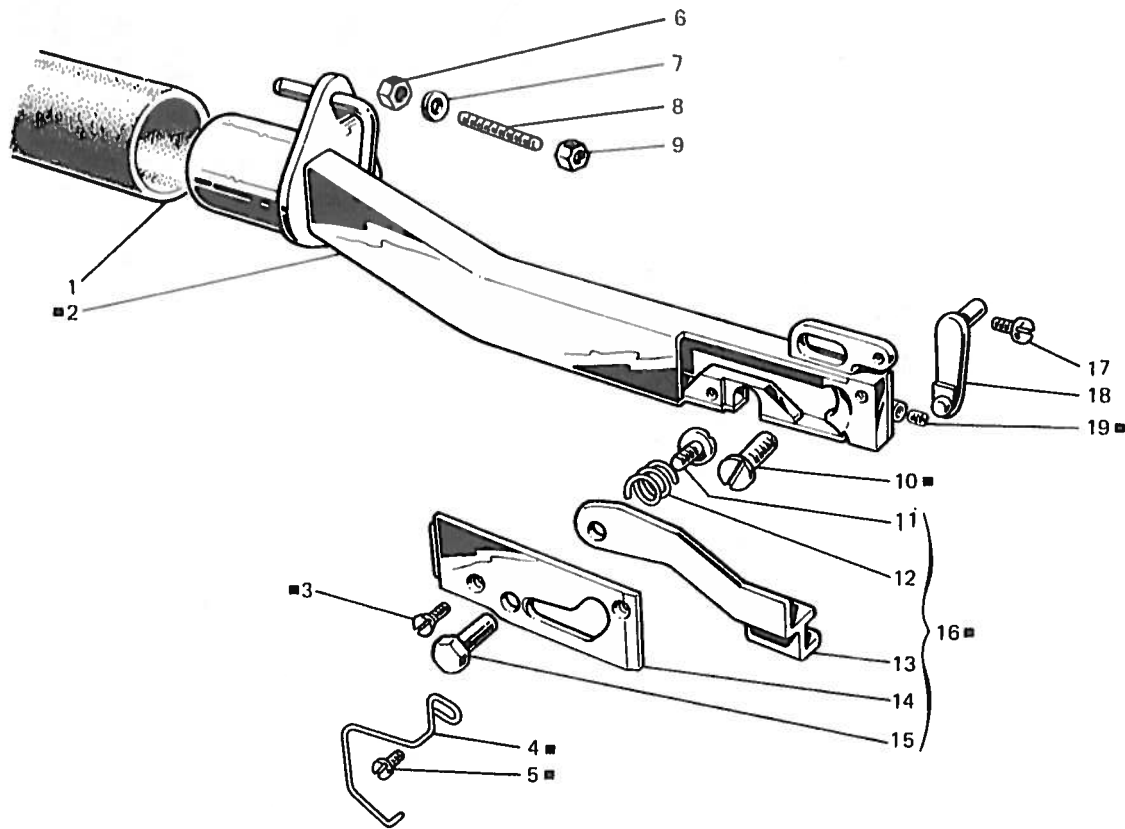




Tubo aspirazione catenella con coltelli - app. 135-81; 137-81
Chain suction pipe with knives - 135-81; 137-81 attachments

TAV. 1

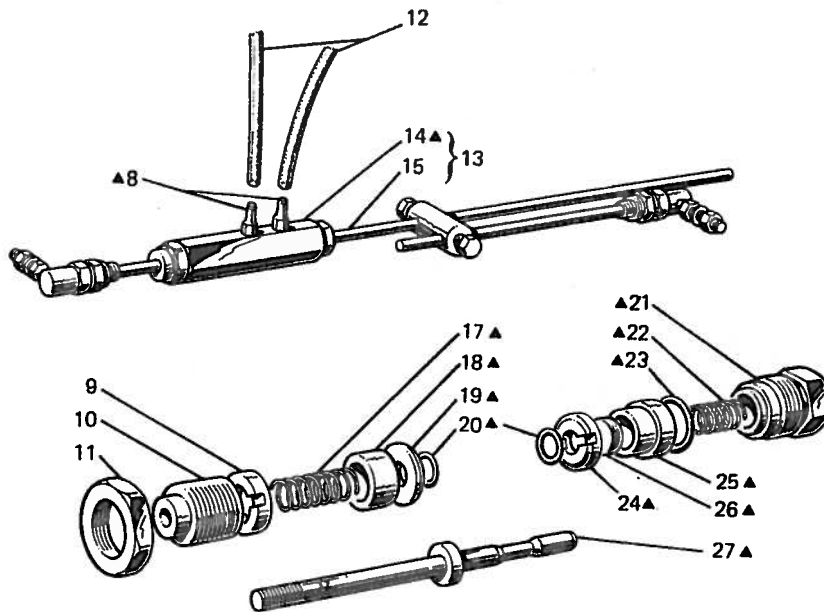
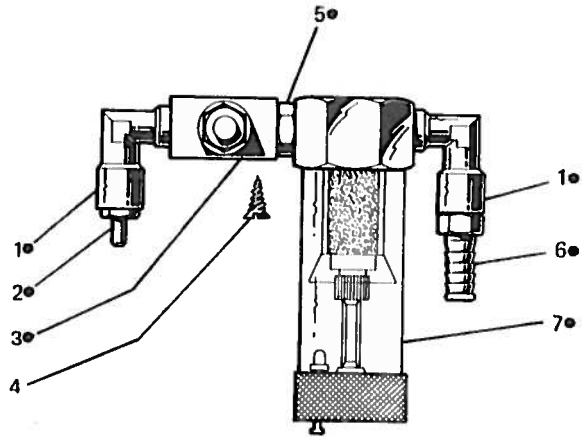
Rif. N.	DISEGNO N. PART N.	Qt.	DESCRIZIONE DESCRIPTION	Rif. N.	DISEGNO N. PART N.	Qt.	DESCRIZIONE DESCRIPTION
*	923938-4-01	1	gruppo tubo aspirazione con coltelli suction pipe assembly with knives	10	741974-2-00	1	vite fissaggio tubo aspirazione suction pipe fixing screw
1	923806-0-00	1	tubo scarico catenella (135-81) chain exhaust pipe	11	926758-0-00	1	vite screw
	921293-0-10	1	tubo colleg. aspirazione-filtro (137-81) suction-filter connecting pipe	12	923918-0-01	1	molla spring
2	923934-2-01	1	tubo di aspirazione suction pipe	13	926754-2-01	1	coltello mobile movable knife
3	744530-0-00	2	vite fissaggio coltello knife fixing screw	14	926753-2-01	1	coltello fisso fixed knife
4	923936-0-00	1	molla di limitazione taglio spring	15	923919-0-01	1	perno pin
5	721410-0-00	1	vite fissaggio molla spring screw	16	926755-4-01	1	gruppo coltelli knives assembly
6	746021-2-00	1	dado fissaggio tubo aspirazione suction pipe fixing nut	17	741931-0-00	1	vite fissaggio azionatore actuator fixing screw
7	704310-2-00	1	rondella washer	18	923940-0-00	1	azionatore a bottone di manovella crankpin actuator
8	923942-0-00	1	perno filettato pin	19	745001-0-00	1	vite screw
9	923943-0-00	1	dado autobloccante nut		920258-0-10	1	cinturino fissaggio tubetti pipe fixing strap



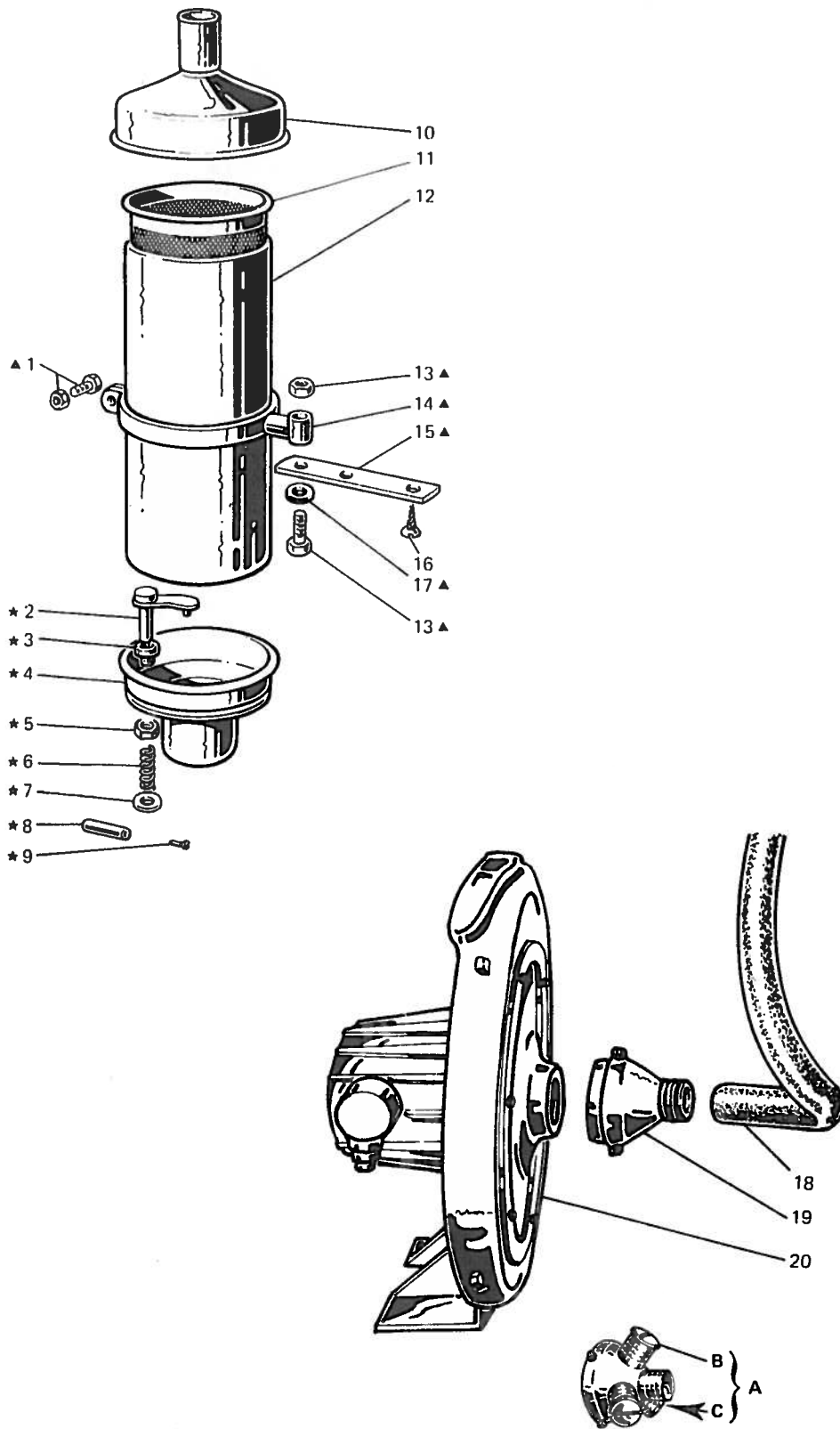
Tubo aspirazione catenella con coltelli - app. 136-81
Chain suction pipe with knives - 136-81 attachment

TAV. 2

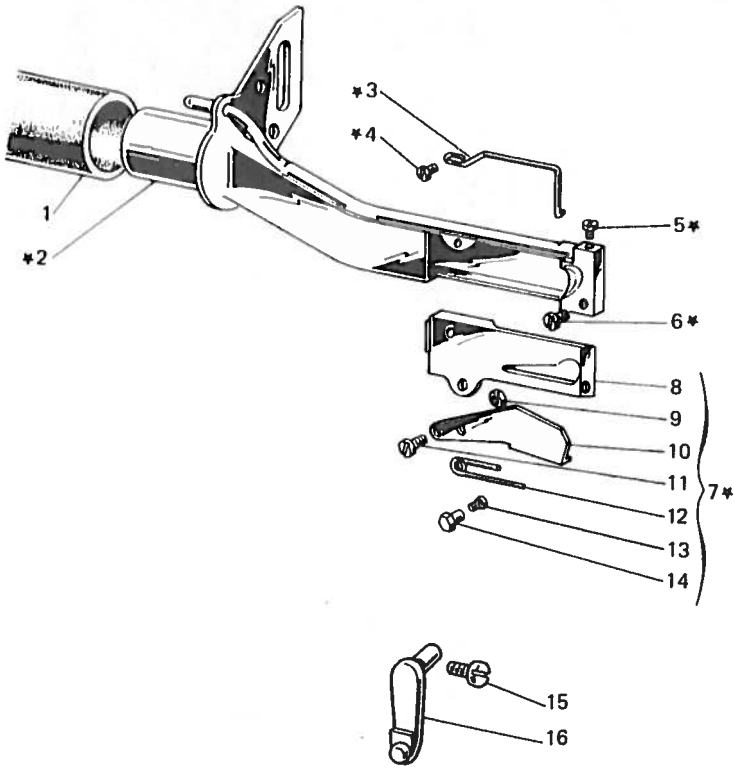
Rif. Ref. N.	DISEGNO N. PART N.	Qt.	DESCRIZIONE DESCRIPTION	Rif. Ref. N.	DISEGNO N. PART N.	Qt.	DESCRIZIONE DESCRIPTION
■	923939-4-01	1	gruppo tubo d'aspirazione con coltelli suction pipe assembly with knives	11	926758-0-00	1	vite screw
1	923806-0-00	1	tubo scarico catenella chain exhaust pipe	12	923918-0-01	1	molla spring
2	923935-2-01	1	tubo d'aspirazione suction pipe	13	926756-2-01	1	coltello mobile movable knife
3	744530-0-00	2	vite fissaggio coltello knife fixing screw	14	926753-2-01	1	coltello fisso fixed knife
4	923937-0-00	1	molla limitazione taglio spring	15	923919-0-01	1	perno pin
5	721410-0-00	1	vite fissaggio molla spring screw	16	926757-0-01	1	gruppo coltelli knives assembly
6	746021-2-00	1	dado fissaggio tubo aspirazione suction pipe fixing screw	17	744031-0-00	1	vite fissaggio azionatore actuator fixing screw
7	704310-2-00	1	rondella washer	18	923941-0-00	1	azionatore a bottone di manovella crankpin actuator
8	923942-0-00	1	perno pin	19	745001-0-00	1	vite screw
9	923943-0-00	1	dado autobloccante nut		920258-0-10	1	cinturino fissaggio tubetti pipe fixing strap Solo per testa - Only for head 330-00-1CD-01
10	741974-2-00	1	vite fiss. tubo d'aspirazione suction pipe fixing screw	■	926767-4-00	1	gruppo tubo d'aspirazione con coltelli suction pipe assembly with knives



Rif. Ref. N.	DISEGNO N. PART N.	Q1	DESCRIZIONE DESCRIPTION	Rif. Ref. N.	DISEGNO N. PART N.	Q1	DESCRIZIONE DESCRIPTION
●	923805-4-01	1	gruppo dosatore dosimeter assembly				
1	923803-0-00	2	raccordo union				
2	924870-0-10	1	attacco per tubetto connection				
3	923800-0-00	1	dosatore di mandata delivery dosimeter				
4	731105-0-00	4	vite fissaggio dosatore dosimeter fixing screw				
5	923802-0-00	1	raccordo nipple				
6	923804-0-00	1	attacco per tubo connection				
7	923801-0-00	1	filtro aria air filter				
8	924797-0-10	2	attacco per tubetto connection				
9	924800-0-10	1	ghiera nut				
10	924790-0-10	1	tappo plug				
11	924796-0-10	1	dado nut				
12	924886-0-10	2	tubetto pipe				
13	923815-5-00	1	valvola completa di tirante valve with tie-rod assembly				
14	923816-4-00	1	valvola completa valve assembly				
15	923812-0-00	1	tirante completo di snodi tie-rod with knuckles				
16	900941-0-00	1	snodo superiore upper knuckles				
17	203909-0-10	1	molla spring				
18	923825-0-00	1	distanziale spacer				
19	923822-0-00	1	rondella washer				
20	923828-4-00	2	anello di tenuta retainer ring				
21	923824-0-00	1	tappo plug				
22	923826-0-00	1	molla spring				
23	701017-0-00	1	anello di tenuta retainer ring				
24	923823-0-00	1	rondella washer				
25	923820-0-00	1	distanziale spacer				
26	923821-0-00	1	pastiglia plug				
27	923818-0-00	1	pistone piston				
28	900942-0-00	1	snodo inferiore lower knuckle				



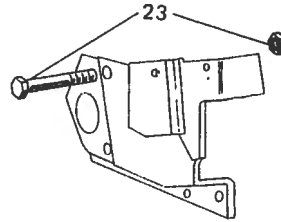
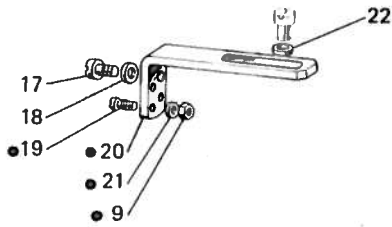
Rif. Ref. N	DISEGNO N. PART N	Qt.	DESCRIZIONE DESCRIPTION	Rif. Ref. N	DISEGNO N. PART N	Qt.	DESCRIZIONE DESCRIPTION
	921271-4-10	1	filtro completo filter assembly	20	921301-0-10	1	elettroaspiratore A 300 - 220 V monofase - 50 Hz - 370 W electroaspirator A 300 - 220 V single-phase - 50 Hz - 370 W
▲	921285-4-10	1	fascia sost. filtro completo filter support assembly				
★	921270-4-10	1	bocchettone inferiore completo lower union assembly	20	921303-0-10	1	elettroaspiratore A 300 - 220/380 V trifase - 50 Hz - 370 W electroaspirator A 300 - 220/380 V three-phase - 50 Hz - 370 W
1	921331-0-10	1	hullone bolt	20	921304-0-10	1	elettroaspiratore A 300 - 240/415 V trifase - 50 Hz - 370 W electroaspirator A 300 - 240/415 V three-phase - 50 Hz - 370 W
2	921274-2-10	1	leva lever	20	921306-0-10	1	elettroaspiratore A 300 - 110 V monofase - 60 Hz - 370 W electroaspirator A 300 - 110 V single-phase - 60 Hz - 370 W
3	921291-0-10	1	boccola bush	20	921307-0-10	1	elettroaspiratore A 300 - 220 V monofase - 60 Hz - 370 W electroaspirator A 300 - 220 V single-phase - 60 Hz - 370 W
4	921269-2-10	1	bocchettone inferiore lower union	20	921309-0-10	1	elettroaspiratore A 300 - 110/200 V trifase - 60 Hz - 370 W electroaspirator A 300 - 110/200 V three-phase - 60 Hz - 370 W
5	921292-0-10	1	ghiera nut	20	921310-0-10	1	elettroaspiratore A 300 - 220/380 V trifase - 60 Hz - 370 W electroaspirator A 300 - 220/380 V three-phase - 60 Hz - 370 W
6	921290-0-10	1	molla spring				
7	704314-0-00	1	rondella washer				
8	921289-0-10	1	astina di comando control pin				
9	741682-0-00	1	vite screw				
10	921282-0-10	1	bocchettone superiore upper union				
11	921279-2-10	1	filtro filter				
12	921281-0-10	1	contenitore filtro filter box				
13	921330-0-10	1	bullone bolt				
14	921284-2-10	1	fascia di sostegno support band				
15	921288-0-10	1	attacco bracket				
16	731066-0-00	2	vite screw				
17	704011-0-00	1	rondella washer				
18	921294-0-10	1	tubo collegam. filtro-elettroaspiratore connecting pipe (filter-electroaspirator)				
19	921298-0-10	1	bocchettone a 1 via 1-way pipe union				
20	921300-0-10	1	elettroaspiratore A-300 - 125V monofase - 50 Hz - 370 W electroaspirator A-300 - 125V single-phase - 50 Hz - 370 W				
			Solo a richiesta Only on request				
A	921313-4-10	1	bocchettone a 4 vie 4-way pipe union				
B	921312-0-10	3	tappo plug				
C	921327-0-10	1	bocchettone pipe union				
18	921295-0-10	1	tubo collegam. per 2 macchine connecting pipe for 2 machines				
18	921296-0-10	1	tubo collegam. per 3 macchine connecting pipe for 3 machines				
18	921297-0-10	1	tubo collegam. per 4 macchine connecting pipe for 4 machines				



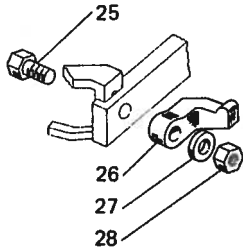
Per teste senza differenziale
For heads without differential feed



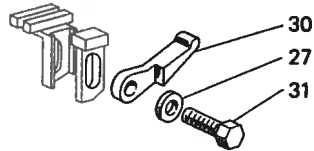
Per teste con differenziale
For heads with differential feed



Per teste senza differenziale e con perno porta coltello non forato
For heads without differential feed, with knife holder pin without hole

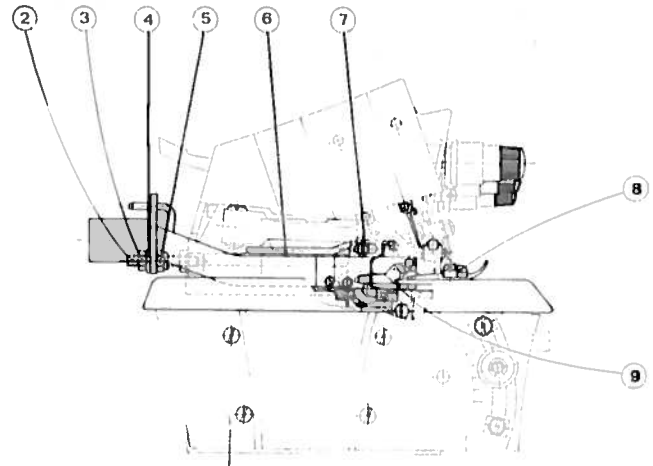
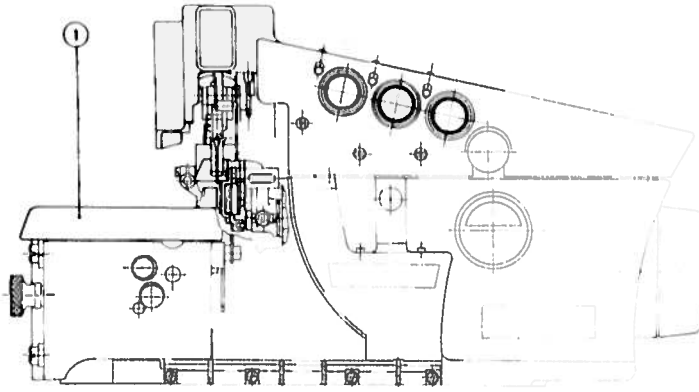


Per teste con differenziale e con perno porta coltello non forato
For heads with differential feed and with knife holder pin without hole



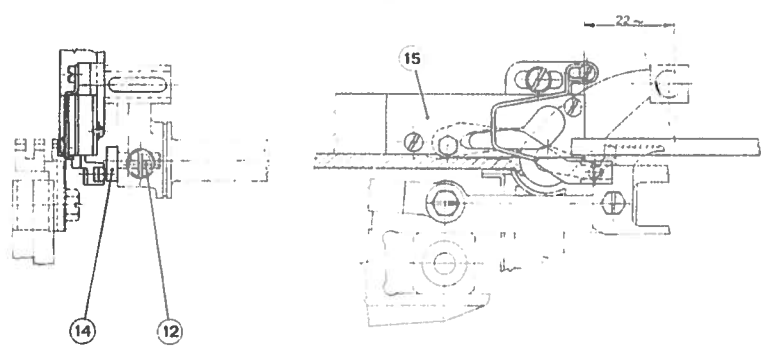
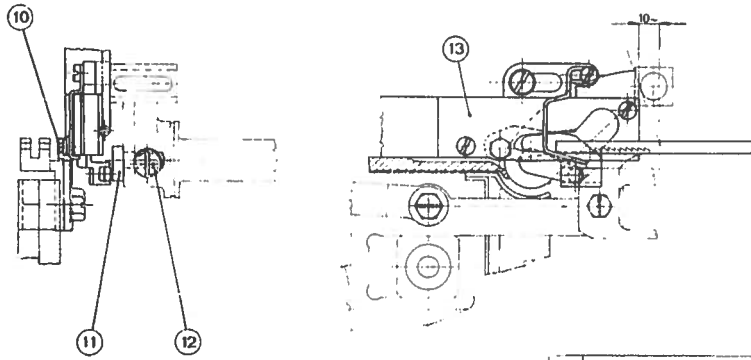
Rif. Part N	DISEGNO N. PART N	Qt.	DESCRIZIONE DESCRIPTION	Rif. Ref N	DISEGNO N. PART N	Qt.	DESCRIZIONE DESCRIPTION
★	923768-4-02	1	gruppo tubo aspiraz. con coltelli (135-80; 137-80) suction pipe assembly with knives (135-80; 137-80)	22	704316-2-00	2	rondella washer
	923769-4-01	1	gruppo tubo aspiraz. con coltelli (136-80) suction pipe assembly with knives (136-80)	23	921329-0-10	1	bullone fiss. carter laterale (escluso 228-00-18) side cover fixing bolt (228-00-18 excluded)
●	921283-4-10	1	squadra d'attacco completa bracket assembly	24	921400-0-10	1	squadretta guida slitta porta griffa bracket
	921333-4-10	1	squadra d'attacco per testa 228-00-18 bracket for head 228-00-18	25	740285-0-00	1	vite fiss. azionat. e griffa screw for actuator and feed dog
1	923806-0-00	1	tubo scarico catenella (135-80; 136-80) chain exhaust pipe (135-80; 136-80)	26	923771-0-00	1	azionatore a leva actuator
	921293-0-10	1	tubo scarico catenella (137-80) chain exhaust pipe (137-80)	27	704213-0-00	1	rondella washer
2	923766-2-01	1	tubo di aspirazione (135-80; 137-80) suction pipe (135-80; 137-80)	28	746014-0-00	1	dado nut
	923767-2-01	1	tubo di aspirazione (136-80) suction pipe (136-80)	29	921369-0-10	1	squadretta guida slitta porta griffa slide bracket
3	923829-0-00	1	molla spring	30	923772-0-00	1	azionatore a leva actuator
4	723242-4-00	1	vite screw	31	921370-0-10	1	vite fiss. azionatore a griffa screw for actuator and feed dogs
5	923794-0-00	1	vite screw				
6	744530-0-00	1	vite screw				
7	926752-4-00	1	gruppo coltelli knives assembly				
8	926750-2-00	1	coltello fisso fixed knife				
9	733502-0-00	3	dado nut				
10	926751-2-00	1	coltello mobile movable knife				
11	741428-0-00	1	vite di fermo screw				
12	923754-0-00	1	molla spring				
13	923756-0-01	1	vite screw				
14	923755-0-00	1	perno pin				
15	741931-0-00	1	vite fiss. azionatore actuator fixing screw				
16	923770-0-00	1	azionatore a bottone di manovella crankpin actuator				
	923792-0-00	1	azionatore a bottone di manovella (135-80) per teste 028-00-05; 228-00-03 crankpin actuator (135-80) for heads 028-00-05; 228-00-03				
17	721486-2-00	2	vite screw				
18	704226-2-00	2	rondella washer				
19	921226-0-10	2	vite screw				
20	921262-0-10	1	squadra d'attacco bracket				
	921332-0-10	1	squadra d'attacco per testa 228-00-18 bracket for head 228-00-18				
21	704202-0-00	2	rondella washer				

RAPPRESENTAZIONE MONTAGGIO APP. 135-81 - 136-81 - 137-81
 LAYOUT FOR MOUNTING THE 135-81 - 136-81 AND 137-81 ATTACHMENTS



DETTAGLIO APP. 135-81 - 137-81
 DETAIL FOR 135-81 - 137-81 ATTACHMENTS

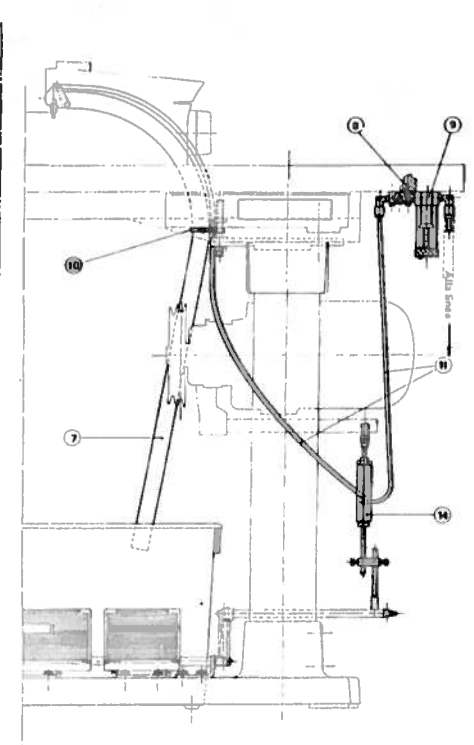
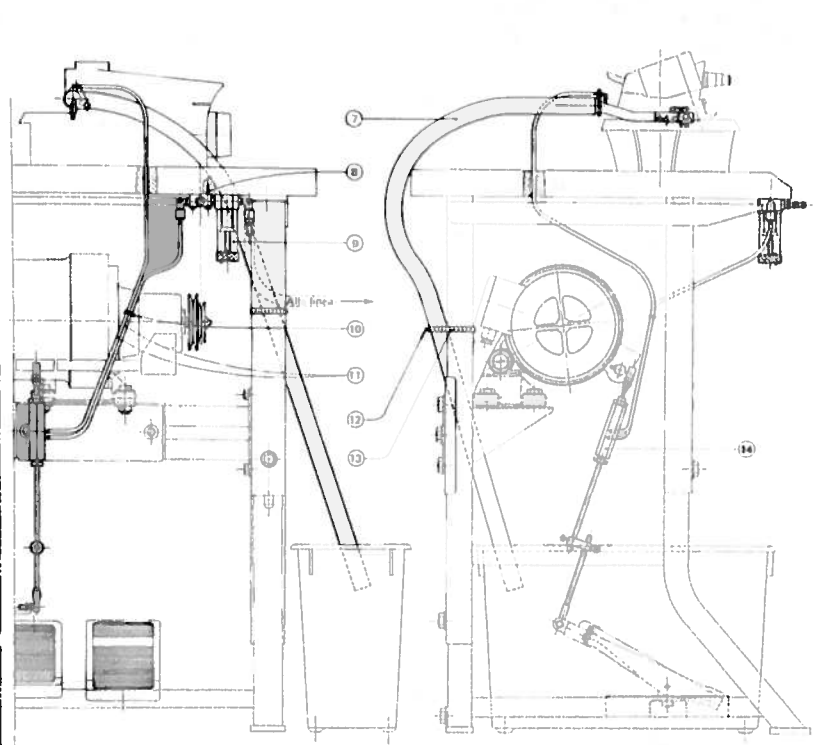
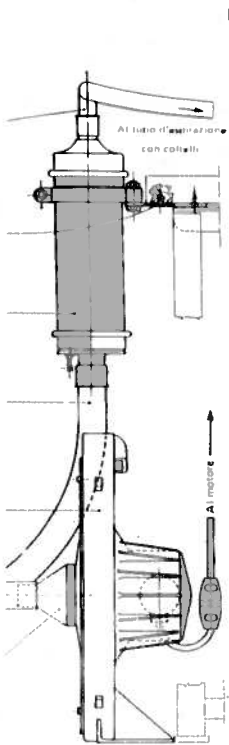
DETTAGLIO APP. 136-81
 DETAIL FOR 136-81 ATTACHMENT



1)	Piano di lavoro	Working plate
2)	Perno filettato	Threaded pin
3)	Dado	Nut
4)	Rondella	Washer
5)	Dado	Nut
6)	Carterino di protezione	Protection cover
7)	Vite	Screw
8)	Piedino	Presserfoot
9)	Placca ago	Needle plate
10)	(135-81; 137-81) Griffa	Feed dog
11)	(135-81; 137-81) Azionatore	Crank-pin actuator
12)	Vite	Screw
13)	(135-81; 137-81) Tubo aspirazione catenella	Chain suction pipe
14)	(136-81) Azionatore	Crank-pin actuator
15)	(136-81) Tubo aspirazione catenella	Chain suction pipe

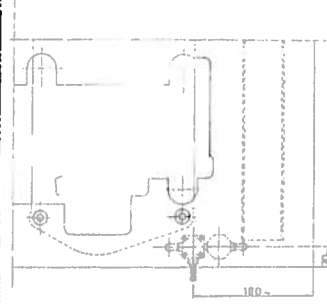
Installazione app. 135-81 e 136-81 su bancali tubolare e regolabile
 Layout for mounting the 135-81 and 136-81 att. on tubular and adjustable stands

Installazione app. 135-81 e 136-81 su bancale a colonna
 Layout for mounting the 135-81 and 136-81 on column stand.

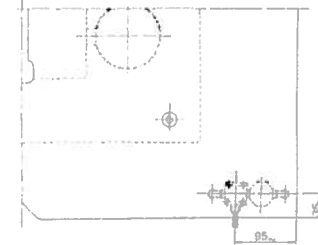


Installazione gruppo elettroaspiratore-filtro app. 137-81 su bancali tubolare, regolabile ed a colonna.

Layout for mounting the electro-pirator-filter group of the 137-81 tech. on tubular, adjustable and column stands.



1) Tubo collegamento aspirazione filtro	Suction filter connecting pipe
2) Viti fissaggio filtro	Filter fixing screws
3) Filtro completo	Filter assembly
4) Tubo collegamento filtro-elettroaspiratore	Filter electroaspirator connecting pipe
5) Elettroaspiratore	Electroaspirator
6) Bocchetta	Union pipe
7) Tubo scarico catarrella	Chimney exhaust pipe
8) Vite fissaggio dosatore	Dosimeter fixing screw
9) Dosimetro	Dosimeter
10) Cinturino fissaggio tubetto (symb. 920258-0-10)	Pipe fixing strap (symb. 920258-0-10)
11) Tubetti	Pipes
12) Bottoncino per cinturino	Strap button
13) Cinturino fissaggio tubo	Strap
14) Valvola con tirante	Valve with tie-rod



Model	Part No.	Description	Part No.	Description	Part No.	Description	Part No.	Description	Part No.	Description
17 00 1CD-01	201904 0 10	023774 0 00	20171 3 10	021352 3 10						
17 00 1CD-07	203214 0 10	023280 0 00	202774 3 10	021422 3 10						
17 00 1CD-11	203288 0 10	023833 0 00	202774 3 10	021422 3 10						
17 00 1CD-10	203300 0 10	023834 0 00	203366 3 10	021422 3 10						
17 00 1CD-02	203507 0 10	023832 0 00	203507 0 10	023832 0 00						
17 00 1CD-09	203400 4 00	021336 4 01	205040 3 00	021360 3 00	202061 0 10	921380 0 11				
17 00 2CD 13	203478 0 10	023807 0 00	203507 0 10	023832 0 00						
17 00 2CD 30	203447 0 10	023803 0 00	203507 0 10	023832 0 00						
17 00 1CD-06	203780 0 10	023895 0 00	203781 0 10	023898 0 00	203003 0 10					
17 00 1MD-23	203781 0 10	023899 0 00	203781 0 10	023898 0 00						
17 00 2MD-36	204006 0 10	023881 0 00	204009 3 10	023883 0 00						
17 20 1CU-04	202764 0 10	023776 0 00	202774 3 10	021403 3 10	202781 0 10	921382 0 10				
17 20 1CU-06	202938 0 10	023804 0 00	202938 0 10	021385 3 10	202070 0 10	921380 0 00				
17 11 1CD-02	202783 0 10	023864 0 00	202783 0 10	023864 0 00	202061 0 10	921380 0 11				
17 18 1CD-03	202784 0 10	023848 0 00	202785 3 10	021403 3 10	206720 4 00	923817 4 00				
17 18 1CD-06	202783 0 10	023864 0 00	202783 0 10	023864 0 00						
17 00 1CD-09	202787 0 10	023848 0 00	202787 0 10	023848 0 00						
17 00 1CD-03	202837 0 10	023840 0 00	202837 0 10	023840 0 00						
17 00 1CD-31	203218 0 10	023882 0 00	203218 0 10	023882 0 00	207600 0 10					
17 20 1CD-07	203364 2 10	023862 2 00	203364 2 10	023862 2 00						
17 20 1CD-09	202639 0 10	023838 0 00	202639 0 10	023838 0 00	921350 0 11					
17 00 1CD-30	203030 0 10	023847 0 00	203030 0 10	023847 0 00						
17 00 1MD-33	203037 0 10	023849 0 00	203037 0 10	023849 0 00						
17 00 1CD-26	203047 0 10	023011 0 00	203047 0 10	023011 0 00						
17 00 2CD-12	203437 0 10	021481 0 0	203437 0 10	021481 0 0						
17 00 3CD-34	203436 0 10	023856 0 00	203436 0 10	023856 0 00						
9 00 2CD-01	204698 0 10	021481 0 10	204698 0 10	021481 0 10						
9 00 2CD-02	204698 0 10	021482 0 11	204698 0 10	021482 0 11						
9 00 2CD-03	204821 0 10	021483 0 10	204821 0 10	021483 0 10						
9 00 2CD-04	204822 0 10	021484 0 10	204822 0 10	021484 0 10						
9 00 2CD-06	204884 0 10	021495 0 10	204884 0 10	021495 0 10						
9 00 2CD-07	205075 0 10	023899 0 00	205075 0 10	023899 0 00						
9 00 2CD-04	205075 0 10	023899 0 00	205075 0 10	023899 0 00						
9 00 2CD-06	205102 0 10	023900 0 00	205102 0 10	023900 0 00						
9 00 3CU-01	206042 0 00	023008 0 00	206042 0 00	023008 0 00						
0 00 1CD-01	205183 0 10	021017 0 10	205183 0 10	021017 0 10						

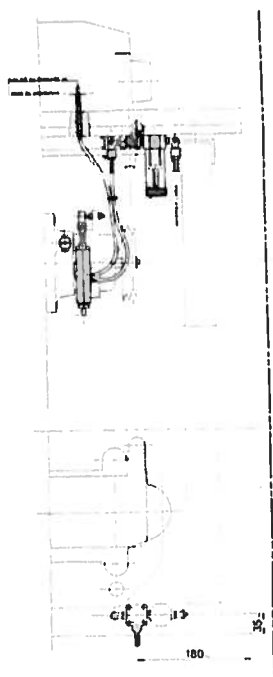
PARTICOLARI DA MODIFICARE PER APPLICARE LE APPROPRIE CILINDRE PER LA CUCINA...
 MODEL 1781 1781 1781 1781 1781 1781 1781 1781 1781 1781 1781 1781 1781 1781 1781
 PARTI DA ASPORTARE PER LA CUCINA...
 PARTI DA ASPORTARE PER LA CUCINA...
 PARTI DA ASPORTARE PER LA CUCINA...
 PARTI DA ASPORTARE PER LA CUCINA...

NB: I PEZZI CONTRASSEGNA TI COME DOVRANNO ESSERE ORDINATI.
 - PARTI MARKED WITH @ MUST BE REQUESTED.
 - LES PIÈCES MARQUÉES PAR @ DEVRA NT ÊTRE COMMANDÉES.
 - DIE MIT @ BEZEICHNETEN TEILE MÜSSEN BESTELLT WERDEN.
 - LAS PIEZAS CONTRASEÑADA CON @ TENDRAN OUF SER PEDIDOS.

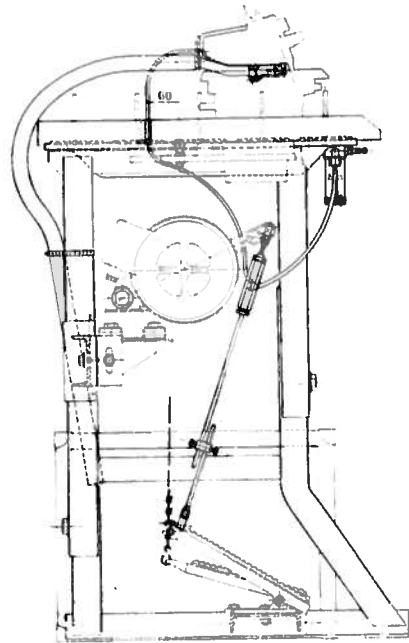
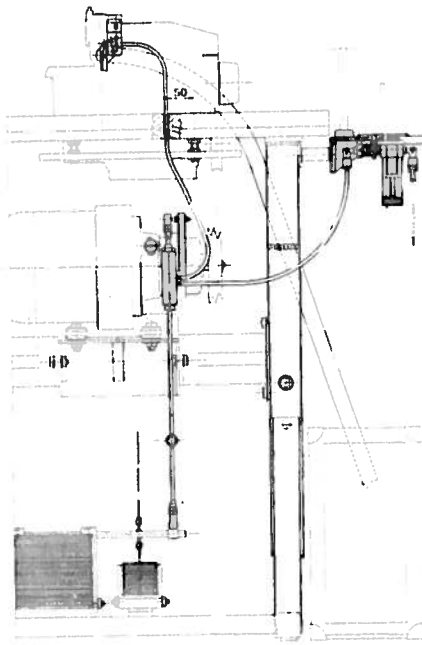
PARTI DA ASPORTARE
 PART TO BE REMOVED
 PARTIE À ENLEVER
 @EGLYHENDEN TEIL
 PARTE PARA QUITAR

SCHEMA PIAZZAMENTO APPARECCHIATURE 135-80 e 136-80 SU BANCALE
LAYOUT FOR MOUNTING THE 135-80 AND 136-80 DEVICES ON STAND

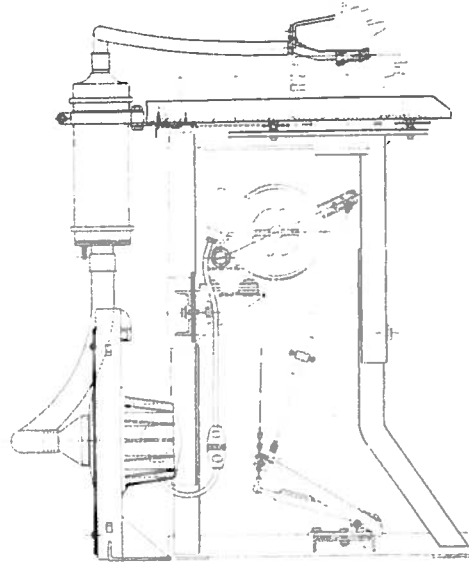
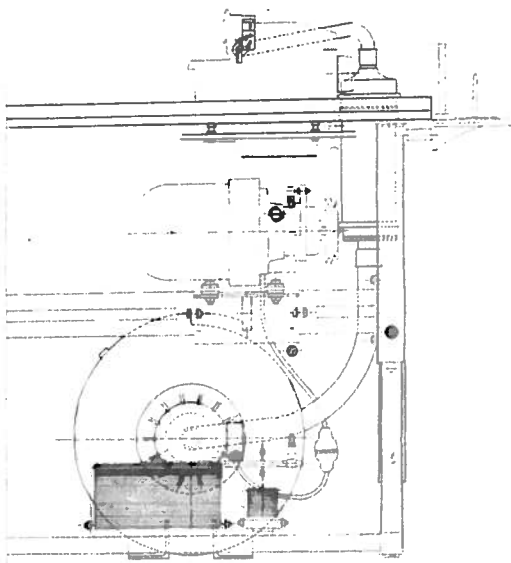
PIAZZAMENTO CON FILTRO APPLICATO
SOTTO LA TAVOLA
MOUNTING WITH FILTER INSTALLED
UNDER THE TABLE



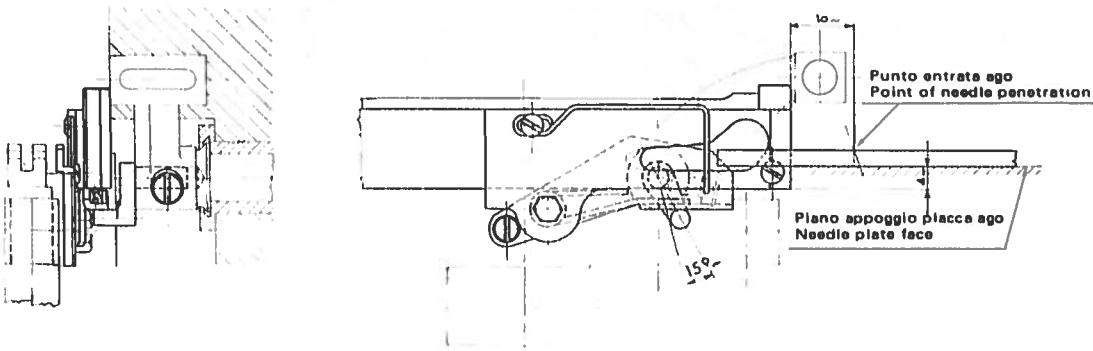
PIAZZAMENTO CON FILTRO APPLICATO SOTTO IL PORTA BOBINE LATERALE
MOUNTING WITH FILTER INSTALLED UNDER THE SIDE BOBBIN HOLDER



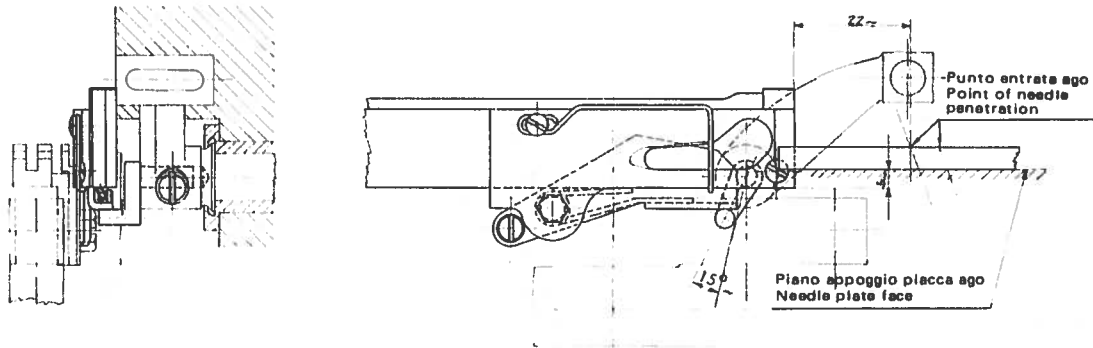
SCHEMA PIAZZAMENTO APPARECCHIATURA 137-80 SU BANCALE
LAYOUT FOR MOUNTING THE 137-80 DEVICE ON STAND



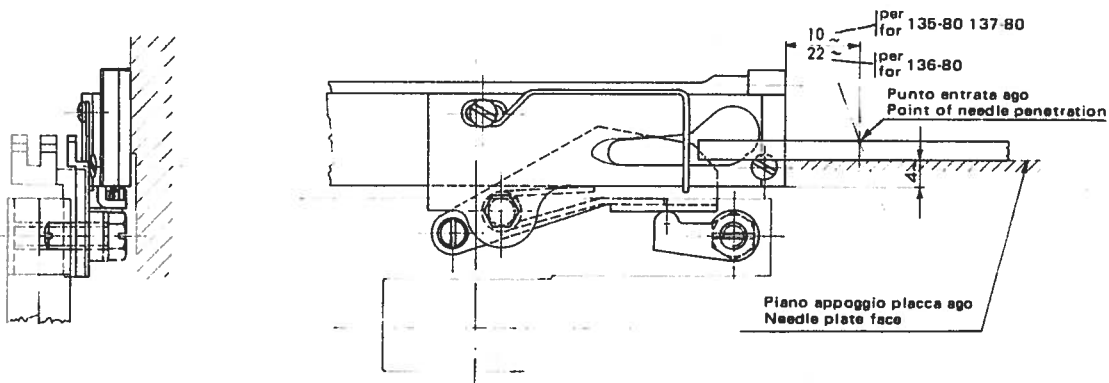
SCHEMA DI MONTAGGIO APPARECCHIATURE 135-80 e 137-80 CON AZIONATORE A BOTTONE DI MANOVELLA
 LAYOUT FOR MOUNTING THE 135-80; 137-80 DEVICES WITH STARTER AND CRANK PIN



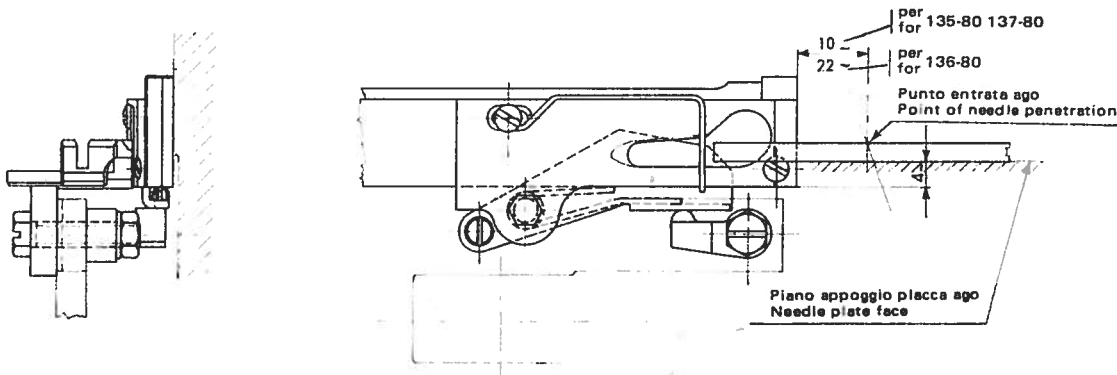
SCHEMA DI MONTAGGIO APPARECCHIATURA 136-80 CON AZIONATORE A BOTTONE DI MANOVELLA
 LAYOUT FOR MOUNTING THE 136-80 DEVICE WITH STARTER AND CRANK PIN



HEMA DI MONTAGGIO APPAR. 135-80; 136-80; 137-80 CON AZIONATORE A LEVA PER MACCHINE CON TRASPORTO DIFFERENZIALE
 LAYOUT FOR MOUNTING THE 135-80; 136-80; 137-80 DEVICES WITH LEVER STARTER FOR HEAD WITH DIFFERENTIAL FEED

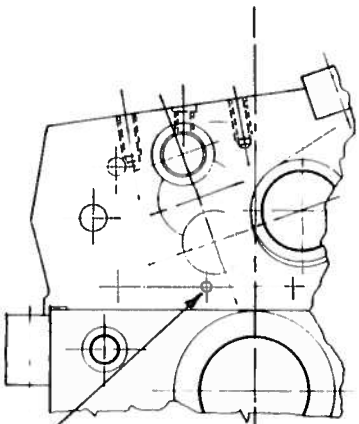
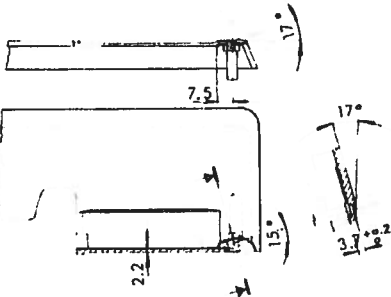
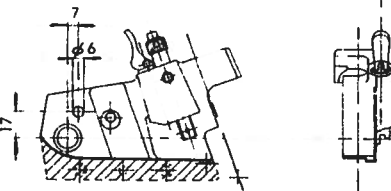
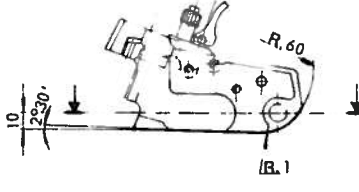
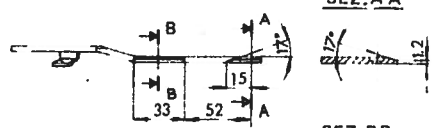
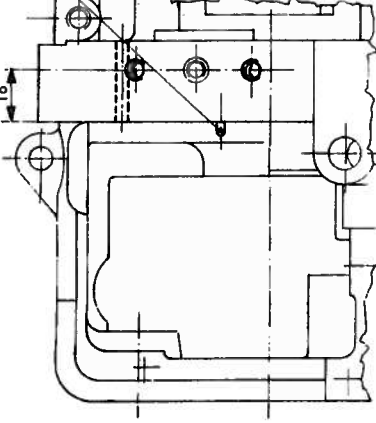

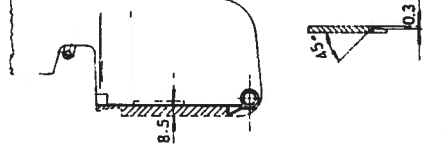
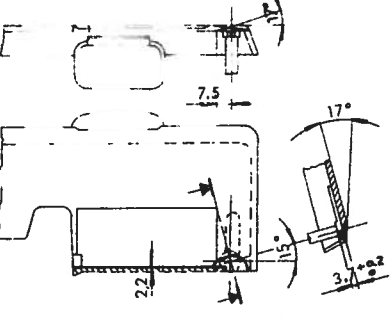


HEMA DI MONTAGGIO APPAR. 135-80; 136-80; 137-80 CON AZIONATORE A LEVA PER MACCHINE SENZA TRASPORTO DIFFERENZIALE
 LAYOUT FOR MOUNTING THE 135-80; 136-80; 137-80 DEVICES WITH LEVER STARTER FOR HEADS WITHOUT DIFFERENTIAL FEED



PARTICOLARI DA MODIFICARE PER APPLICARE LE APPARECCHIATURE 135-80; 136-80; 137-80 SULLE TESTE CL.
 PARTS TO BE MODIFIED FOR MOUNTING 135-80, 136-80, 137-80 DEVICES ON MACHINE HEADS CLASSES
 PIECES A MODIFIER POUR LE MONTAGE DES DISPOSITIFS 135-80; 136-80, 137-80 SUR TETE CLASSES
 ABZUANDERENDE TEILE FÜR DIE MONTAGE DER CORRICHTUNG 135-80, 136-80, 137-80 AN DIE OBERTEILE KL
 PARTICULARES PARA MODIFICAR ANTES DE APLICAR LOS APARATOS 135-80, 136-80, 137-80 EN LAS MAQUINAS CL

227 228 028 229-

MACCHINA CLASSE MACHINE CLASS MACHINE CLASSE MASCHINE KLASSE MAQUINA CLASE	Base della macchina Machine base Soubassement de la machine Grundgestell der Maschine Base de la maquina	Carter laterale Side cover plate Carter lateral Seitliche Schutzplatte Carter lateral	Piano di lavoro Work plate Plan de travail Arbeitsfläche Plano de trabajo	
227 con differenziale with differential avec différentiel mit differential con diferencial				
227 senza differenziale without differential sans différentiel ohne differential sin diferencial				
228 con differenziale with differential avec différentiel mit differential con diferencial				
228 senza differenziale without differential sans différentiel ohne differential sin diferencial				
028 con differenziale with differential avec différentiel mit differential con diferencial		Spina da estrarre Pin to take out Pivot a enlever Stift herauszuziehen Perno para quitar		
028 senza differenziale without differential sans différentiel ohne differential sin diferencial				
229				
230				

137-80 SULLE TESTE CL
 HEADS CLASSES
 ETE CLASSES
 AN DIE OBERTEILE KL.
 137-80 EN LAS MAQUINAS CL

227-228-028-229-230



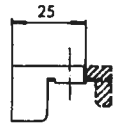
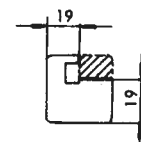
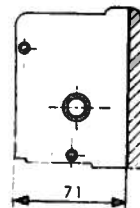
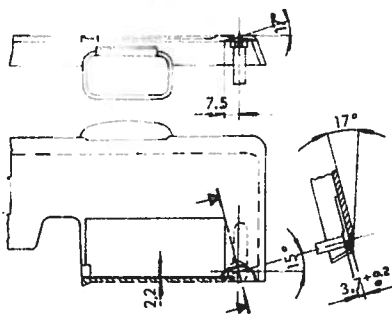
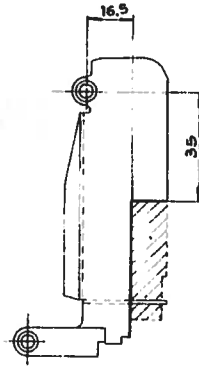
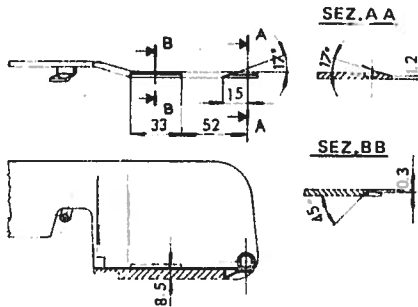
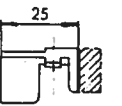
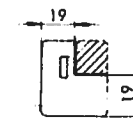
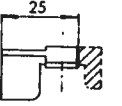
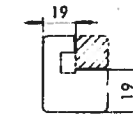
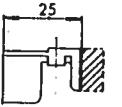
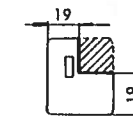
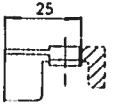
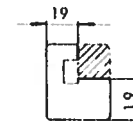
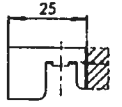
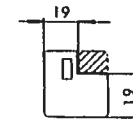
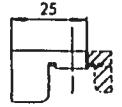
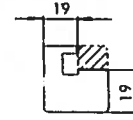
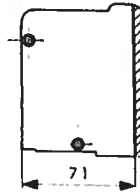
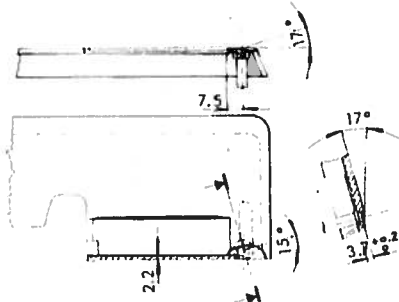
PARTE DA ASPORTARE
 PART TO BE REMOVED
 PARTIE A ENLEVER
 WEGZUNEHMENDER TEIL
 PARTE PARA QUITAR

Piano di lavoro
 Work plate
 Plan de travail
 Arbeits fläche
 Plano de trabajo

Carter para olio
 Oil cover plate
 Carter pare-huile
 Seittl. olenschutzgehäuse
 Carter para aceite

Guarniz. protez. griffe
 Feed dog gasket
 Guarniture pour griffes
 Dichtung für transport.
 Guarnición para ganchos

Guarnizione
 Gasket
 Guarnition
 Dichtung
 Guarnición



PLACCHES, PIEDINI E GRIFFE DA MODIFICARE PER APPLICARE I DISPOSITIVI 135-80; 136-80; 137-80 SULLE TESTE CL. THROAT PLATES, PRESSERFOOT, FEED DOGS TO BE MODIFIED FOR MOUNTING 135-80; 136-80; 137-80 DEVICES ON MACHINE HEADS CL. PLAQUES, PIEDS PRESSEURS ET GRIFFES A MODIFIER POUR LE MONTAGE DES DISPOSITIFS 135-80; 136-80; 137-80 SUR TETE CL. ABZUÄNDERNDE STICHPLATTEN, FUßSCHEN, TRANSPORTER FÜR DIE MONTAGE DER VORRICHTUNG 135-80; 136-80; 137-80 AN DIE OBERTEILE KL. PLACAS, PRENSATELAS Y GANCHOS PARA MODIFICAR ANTES DE APLICAR LOS APARATOS 135-80; 136-80; 137-80 EN LAS MAQUINAS CL.			227 228-028 229-230		PARTI DA ASPORTARE PART IO BE REMOVED PARTIE A ENLIVER WEG/UNEHMENDER TEIL PARTE PARA QUITAR					
227-00-01 028-00-01 228-00-01	202504-0-10 202148-0-10 202507-0-10 202507-0-10 202590-0-10	923774-0-00 923831-0-00 923832-0-00 923833-0-00 923834-0-00	A	B	202171-3 10	921352-3-10	A	B		
227-00-07 028-00-03 228-00-05	203214-0-10 203217-0-10 203220-0-10	923830-0-00 923850-0-00 923851-0-00								
227-00-11 028-00-08 228-00-08	203398-0-10	923853-0-00								
227-00-10 028-00-07 228-00-07	203399-0-10	923854-0-00			203366-3 10	921437-3 10 921439-3 10			202061-0-10	
227-28-01/02 028-28-01/02 228-28-01/02	202507-0-10	923832-0-00			202774-3 10	921396-3 10				
227-00-09/1A 028-00-06 228-00-06/1E	203349-2-10 203347-2-10 203407-2-10	923858-2-00 923856-2-00 923860-2-00	2.5		203362-3 10	921438-3 10	4	2.5	921350-0-11	
227-00-06 028-00-02 228-00-04	203478-0-10 203475-0-10 203477-2-10 203482-2-10	923867-0-00 923868-0-00 923869-0-00 923871-2-00			203447-3 10	921453-3 10				
227-00-13/1H 028-00-10 228-00-10	203785-0-10 203787-0-10 203781-0-10	923890-0-00 923777-0-00 923888-0-00				921455-3 10			203003-0-10	
227-00-23 028-00-18	203761-0-10 203787-0-10 203785-0-10 203762-0-10 203788-0-10	923788-0-00 923777-0-00 923890-0-00 923889-0-00 923891-0-00			203015-3 10	921422-3 10				
227-00-19/1D 028-00-16	204006-0-10 204007-0-10 205050-0-10	923881-0-00 923882-0-00 923883-0-00			204009-3 10	923885-3 00				
227-00-20 028-00-17 228-00-04	204026-0-10	923886-0-00	5		204037-3 10	923887-3 00				
227-28-04 028-28-04 228-28-04	202764-0-10 202763-0-10	923776-0-00 923892-0-00			202774-3 10	921303-3 10				
227-28-03 028-28-03 228-28-03							4	2.5	202761-0-10	921392-0-10
227-28-05/06 028-28-05/06 228-28-05/06	202935-0-10 202936-0-10	923894-0-00 923895-0-00			202938-3 10	921395-3 10			202927-0-10	923893-0-00
227-10-02/05 06/07 028-10-02/03 04/05 228-10-01/05 06/07	202783-0-10 202876-0-10 202877-0-10	923843-0-00 923844-0-00 923845-0-00	2.5		202786-3 10	921403-3 10				
227-10-03/04 228-10-02/03	202784-0-10	923846-0-00					4	2.5	202061-0-10	921350-0-11
					202787-3 10	921404-3 10				

PLACCHÉ, PIEDINI E GRIFFE DA MODIFICARE PER APPLICARE I DISPOSITIVI 135-80, 136-80, 137-80 SULLE TESTE CL.
THROAT PLATES, PRESSERFOOT, FEED DOGS TO BE MODIFIED FOR MOUNTING 135-80, 136-80, 137-80 DEVICES ON MACHINE HEADS CL.
PLAQUES, PIEDS PRESSEURS ET GRIFFES A MODIFIER POUR LE MONTAGE DES DISPOSITIFS 135-80, 136-80, 137-80 SUR TÊTE CL.
ABZUÄNDERNDE STICHLATTEN, FUSSCHEN, TRANSPORTER FÜR DIE MONTAGE DER VORRICHTUNG 135-80, 136-80, 137-80 AN DIE OBERTEILE KL.
PLACAS, PRENSATELAS Y GANCHOS PARA MODIFICAR ANTES DE APLICAR LOS APARATOS 135-80, 136-80, 137-80 EN LAS MAQUINAS CL.

227
228-028
229-230

PARTE DA ASPORTARE
PART TO BE REMOVED
PARTIE A ENLEVER
WEGZUNEHMENDER TEIL
PARTE PARA QUITAR

SEI PIÙ PIÙ E MOVI FOR L'USO E FOR L'USO E FOR L'USO E	SEI PIÙ PIÙ E MOVI FOR L'USO E FOR L'USO E FOR L'USO E	SEI PIÙ PIÙ E MOVI FOR L'USO E FOR L'USO E FOR L'USO E	A	B	SEI PIÙ PIÙ E MOVI FOR L'USO E FOR L'USO E FOR L'USO E	A	B	SEI PIÙ PIÙ E MOVI FOR L'USO E FOR L'USO E FOR L'USO E	A	B	SEI PIÙ PIÙ E MOVI FOR L'USO E FOR L'USO E FOR L'USO E	A	B
227-00-05 028-00-04 228-00-07 227-00-22 227-00-02	202707-0-10 202634-0-10 202635-0-10 202708-0-10 202636-0-10	923775-0-00 923835-0-00 923836-0-00 923837-0-00 923838-0-00			202644-3-10 203680-3-10 202842-3-10								
227-00-03/04 028-00-05 228-00-03	202657-0-10 202638-0-10 202708-0-10	923840-0-00 923841-0-00 923842-0-00	1.1	0.7	202646-3-10			202609-0-10					
227-00-31 228-00-15	203219-0-10	923852-0-00			203162-3-10			921350-0-11					
228-28-07 028-28-07 228-28-07 227-28-09	203354-2-10 202636-0-10	923862-2-00 923838-0-00			203361-3-10 202643-3-10		4	921440-3-10 923839-3-00		2.5			
227-00-30 028-00-25 228-00-13	203014-0-10 203035-0-10 203037-0-10	923847-0-00 923848-0-00 923849-0-00			203038-3-10 203017-3-10			203004-0-10					
227-00-11	203552-0-10 203580-0-10	923877-0-00 923878-0-00	1.3		203597-3-10		4.5	203544-0-10	923876-0-00				
227-28-08	203512-0-10	923873-0-00	2	3.8	203513-3-10			203502-0-10	923872-0-00				
227-00-12/1E 028-00-09 228-00-09	203437-0-10 203435-0-10 203436-0-10	921451-0-10 923863-0-00 923864-0-00	2.7	1.6	203447-3-10								
229-00-01 229-00-02 229-00-03 229-00-04 229-00-05 229-00-07 229-00-06/10	204895-0-10 204809-0-10 204898-0-10 204821-0-10 204822-0-10 204864-0-10 204948-0-10 205026-0-10 205025-0-10	921401-0-10 923807-0-00 921492-0-10 921492-0-10 921494-0-10 921404-0-10 921506-0-00 923809-0-00 923898-0-00	3.4	1.5									
230-00-01	205163-0-10	921517-0-10	4.2										

N.B. Per queste macchine richiedere il griffo 921350-0-11
 ... Feet dog N. 921350-0-11 must be requested for these machines
 ... Pour ces machines demander la griffe N. 921350-0-11
 ... Für diese Maschinen ist der Transporter N. 921350-0-11 zu bestellen
 ... Por lo que concierne estas maquinas pedir el gancho N. 921350-0-11

N.B. I PEZZI CONTRASSEGNA TI CON * DOVRANNO ESSERE ORDINATI.
 • PARTS MARKED WITH * MUST BE REQUESTED.
 • LES PIÈCES MARQUÉES PAR * DEVRONT ÊTRE COMMANDÉES.
 • DIE MIT * BEZEICHNETEN TEILE MÜSSEN BESTELLT WERDEN.
 • LAS PIEZAS CONTRASEÑADA CON * TENDRAN QUE SER PEDIDOS.